

Early voting ends tomorrow

Precinct 1 polling location has changed for general election

BY KARA GERBERT
Managing Editor

Early voting for the Nov. 8 general election ends tomorrow, so there is still a small window of time for voters to get to the polls before election day.

By Wednesday morning, 1681 early voting ballots had been cast out of the 7,509 registered voters in Brewster County and 192 mail-in ballots had been received.

All registered voters in the county may cast their ballots early at the Val Clark Beard Complex, 203 North Seventh Street, in Alpine from 8 a.m. until 6 p.m. Friday. Early ballots may be cast in remote polling locations from 9 a.m. until 5 p.m. today, Nov. 3rd. Precinct 3 voters may cast early ballots at the Marathon Community Center, Second Avenue and Avenue E in

See ELECTION • 6

INSIDE



FEATURED

See sports on pages 9-10.

Rainfall totals at Alpine-Casparis Airport

2022 13.74"
October 0.00"



Burn Ban OFF

INDEX 16 pages

Opinions P.4
Sports P.9-10
Classifieds P.13-14

PLEASE REMEMBER TO THANK A VETERAN, A MEMBER OF THE ARMED FORCES, OR A LAW ENFORCEMENT OFFICER EVERY DAY.



Competition for 'best bowl o' red' begins today

BY KARA GERBERT
Managing Editor

The battle for the best chili officially began 55 years ago in 1967 between Frank X. Tolbert and H. Allen Smith. Organized by a Texas historian and chili aficionado Wick Fowler and Carroll Shelby of Mustang fame, they decided to settle the feud between the two journalists after months of back-and-forth arguments on the merits of their ideas on good chili. Tolbert was a well-known writer for the Dallas Morning News and Smith, well, he was a New

Yorker.

This contest was set to be held in an unbiased location around Terlingua, at high noon on October 21, 1967. A few judges were gathered up, with one of them being the late Hallie Stillwell who settled in this region in 1910. Stillwell voted for Smith, David Witts declared his tastebuds were shot, and the final judge Floyd Schneider voted for Tolbert. Thus, the competition was declared a draw by Wick Fowler at the

See CHILI • 6



Jon Gockel of Terlingua ponders chili flavors in a round of judging.

Avalanche photo by Kara Gerbert

Lady Bucks take Bi-District



Alpine Lady Bucks clinch the Bi-District Championship Tuesday with the win over Brownfield.

Avalanche photo by J.T. Maroney

Council amends ordinances for boards, commissions

BY KARA GERBERT
Managing Editor

The City of Alpine held its regularly scheduled meeting on Nov. 1, with looming questions and concerns from constituents about the removal of the Alpine Airport Advisory Board, as well as Ordinance 2022-09-02, driving public comments and the public hearing. Council member, Ward 3, Sara Tandy was absent.

Public comments on the agenda item located under the public hearing section on Tuesday evening included questions and concerns from Alpine resident Genie Chopelas who expressed that when city officials were contacted and asked what

requirements and qualifications were needed to be allowed on a committee or board, that she was unable to acquire a clear answer.

City Manager Megan Antrim reported that the drafting of a noise ordinance was being conducted by Alpine Police Chief Darrell Losoya and City Tourism Director Chris Ruggia, taking into consideration that Alpine is a music friendly town.

In other report items, Antrim mentioned that the city had applied for a FEMA grant to purchase generators to use in the field at the city's wells in instances where power outages affected them. Antrim stated "We have passed the first step" after receiving an email on Oct. 26

letting her know that their documentation had been passed onto FEMA for review.

As mentioned above, the Public Hearing to obtain citizen views and comments on the second and final reading of Ordinance 2022-09-02 was of concern to citizens. The ordinance establishes Chapter 16 – Boards, commissions, and committees to the Alpine Code of Ordinances; Amending processes, procedures, guidelines, and requirements for city boards, commissions, and committees. Former council member Rick Stephens voiced concerns and disappointment about the ramifications of this ordinance, especially where it concerned the Alpine Airport Advisory Board.

During action items, the council voted unanimously on all but one of the items up for approval. Action item one was the final reading of Ordinance 2022-10-03, in which it established Chapter 16 – boards, commissions, and committees to the Alpine Code of Ordinances; Amending processes, procedures, guidelines, and requirements for city boards, commissions, and committees. Ward 2 council member Chris Rodriguez spoke openly about the Alpine Airport Advisory Board being dissolved, and that perhaps the former board members were not tasked by the council to give reports. Rodri-

See COUNCIL • 6

Alpine Memorial FUNERAL HOME
CREMATIONS • PRENEED PLANS
Honor The Memories
EACH SERVICE, UNIQUE AND PERFECT IN EVERY WAY.
209 West Sul Ross, Alpine Texas | 432-837-2222
www.AlpineMemorialFuneralHome.com

MONICA WOODALL
900 E. HOLLAND AVE. • (NEXT TO BEALLS)
ALPINE, TX 79830
432-837-5631
LIKE A GOOD NEIGHBOR STATE FARM IS THERE.
STATE FARM INSURANCE

Lucy's Christmas Cottage
106 W. Lockhart Behind True Value
A year round Christmas store featuring unique decorations and home accents

Double K FLOWERS & GIFTS
DEBORAH PRUITT OWNER
o: (432) 837-2227 409 E. Ave. E • Alpine, TX
c: (432) 940-9150 deborahpruit50@yahoo.com

TRANSPecos BANKS
Texas Banking at its Best.
402 W Holland Ave, Alpine, TX 79830
432-837-0094 | www.transpecosbanks.com
FDIC

Lobby & Drive-Up Services Available!
Proudly Serving Our Community
ALPINE BRANCH | 101 East Avenue E | Alpine, TX 79830 | 432.837.3375
WTNB
MEMBER FDIC EQUAL HOUSING LENDER
NMLS 410435 | 877.493.7862 | WTNB.com

VOTE

ZUBELDIA

TEXAS STATE SENATE DISTRICT 29

- **LOWER TAXES**
- **LOWER GAS PRICES**
- **HIGHER PAYING JOBS**
- **BORDER SECURITY**



BRI studies mammals in national park

On the northeastern range of the Chihuahuan Desert along the U.S.-Mexico border, the 800,000-acre Big Bend National Park boasts a diversity of ecosystems and hosts a variety of plant and animal species. The park was established in 1944 in part to preserve these species, and it is the largest protected area of the Chihuahuan Desert in the U.S.

Given the importance of the park for biodiversity and habitat protection in the Trans-Pecos, species distribution in the park has been well-studied. However, it is also important to monitor changes over time and to gauge what factors within the park may contribute to change, such as increased visitation use and climate change.

Borderlands Research Institute conducted a study of mammals in the park to understand their distribution, activity, habitat use, and co-occurrence patterns, specifically for carnivores and ungulates. Fifty-eight motion-triggered camera traps were placed within and surrounding the Chisos Basin from 2014-2019.

A variety of mammals were documented, including the two large carnivores of the park - mountain lions and black bears - as well as mesocarnivores such as bobcats, badgers, coyotes, kit foxes, gray



Javelina are commonly found in Big Bend.

Avalanche photo by Kara Gerbert

foxes, raccoons, ringtails, long-tailed weasels, hooded skunks, and more. Ungulates in the park include the Carmen Mountains white-tailed deer, mule deer, and javelina, and the invasive feral hog and aoudad.

The study found white-tailed deer mostly occurring in higher elevations, and mule deer in lower elevations. There was evidence of bobcat and coyote coexistence.

Exotic species of aoudad were present, and identified as habitat generalists, raising the concern of potential competition with native desert bighorn sheep which

are repopulating the park. Mountain lions and black bears overlapped with all mammal species within the park, indicating large carnivores can influence species diversity and distribution. Black bears and mountain lions differed in their use of areas near human infrastructure, with black bears detected more often and closer to human use areas.

This study occurred over a five-year period and can help park biologists identify potential areas of species interactions and human-wildlife conflict to make habitat management decisions.



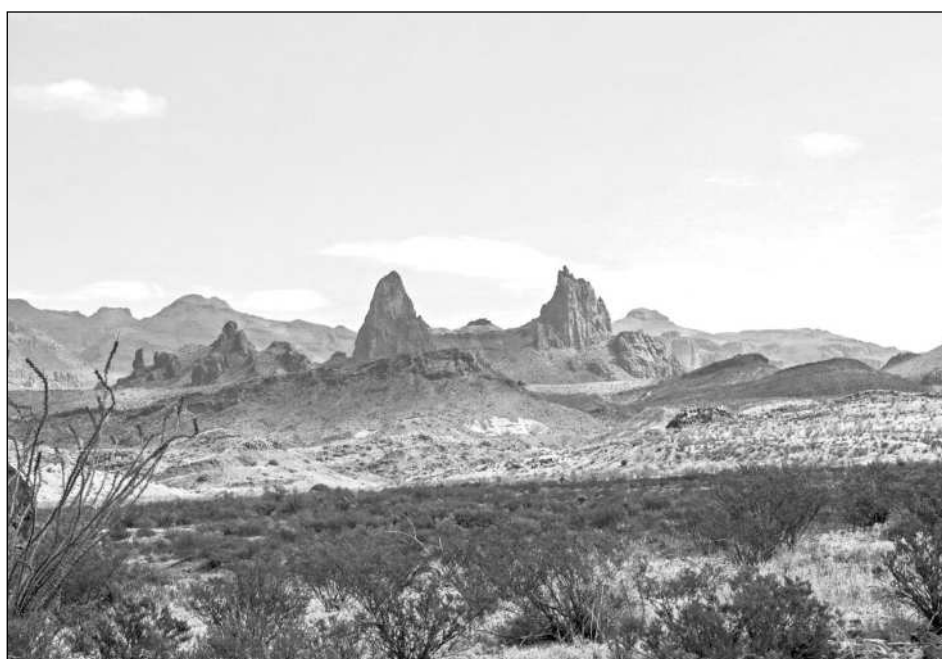
Boquillas crossing posts new winter hours

The Boquillas Port of Entry within Big Bend National Park, providing access to the town of Boquillas, Coahuila, Mexico, as well as the Mexican Protected Areas of Maderas del Carmen and Ocampo, will change to the winter schedule beginning Wednesday, November 2. The crossing will be open five days a week, Wednesdays through Sundays.

Big Bend National Park makes top list

As travel continues to make a comeback, National Geographic unveiled its annual list of the 25 inspiring destinations for the renewed travel prospects. This year's "Best of the World" feature is themed around travel destinations that leverage the benefits of tourism to strengthen their local communities and environments. Big Bend National Park was selected in the nature category.

The "Best of the World 2023" list was created, researched, reported and written in collaboration with National Geographic Traveler's international editorial teams. Nat Geo's "Best of the World" list for the year ahead celebrates destinations and travel experiences that illuminate our beautiful world and the diversity of communities and people within it, grouped by category: Family, Adventure, Culture, Nature. This year's 2023 list honors Big Bend National Park as an escape to wild, beautiful places in the nature category.



"Best of the World" is Nat Geo's annual love letter to the most incredible places in the world, both near and far," said Nathan Lump, National Geographic's Editor-in-Chief. "We couldn't be prouder to shine a light on these 25 extraordinary places that most inspired us this year, and which we know will define travelers' itineraries for years to come. From craft breweries and Asia's top film festival in Busan, South Ko-

rea, to women-led Indigenous tourism in Alberta, Canada, and the densest leatherback turtle nesting ground in the world in Trinidad and Tobago, this year's list reminds us that there is still so much out there to explore and experience."

"Travelers to the Big Bend region of Texas are greeted with breathtaking scenery, abundant opportunities for exploration and warm western hospitality," said Robert Alvarez, executive director

of Visit Big Bend. "Our local communities of Marathon, Study Butte, Terlingua and Lajitas are honored by National Geographic's recognition of Big Bend National Park and look forward to welcoming old friends back to the area and new explorers for the first time."

EL PAPALOTE

PLANT NURSERY & GIFT BOUTIQUE
2000 W HWY 90 • ALPINE, TX
432-272-8090

<ul style="list-style-type: none"> • PLANTS • CACTUS • METAL ART • SOUVENIRS • LOCAL GOODS • HANDMADE ITEMS • CANDLES 	<ul style="list-style-type: none"> • GIFTS • KNIVES • ESSENTIAL OILS • ROCKS • FOSSILS • SOAP • LOTIONS
--	--

SOMETHING FOR EVERYONE

Alpine Retirement Low Income Housing

62 and over
1 Bedroom Units
All Electric

1st MONTH RENT FREE

Subsidy accepted
To apply go to:
alpineretirementhomes.com
Or call: 432-837-2259



WEEKLY SALE

SALE

20% OFF ACCESSORIES

BEGINS 11/3

ENDS 11/9

SHOP TODAY!

OUT WEST FEED & SUPPLY
2600 E HWY 90 ALPINE, TX

STRATEGIC PLAN TOWN HALL MEETINGS

City of Alpine is beginning the process of creating and implementing a Strategic Plan. Defining what is most important to our citizens, as well as how we can accomplish those priorities as a City, will guide decision-making for public improvements and fiscal planning for a sustainable future for us all.

Beginning in October, the City began hosting public meetings, one per Ward plus a Mayoral meeting, structured to hear and document public ideas and concerns. Specific TOPICS that we would love to hear the public's ideas on are: 1) Transparent Government, 2) Strong & Resilient Economy, 3) Safe & Flourishing Neighborhoods, 4) Sustainable Infrastructure, and 5) Effective & Efficient Services. We will also have an "Other" category for all other comments and ideas that do not fit into the five topics listed.

City staff looks forward to seeing you at one of the remaining meetings:

- November 5, Saturday, Granada Event Space, 2:00pm (Mayor)
- November 17, Thursday, Visitor Center Pavilion, 5:30pm (Ward 5)
- December 1, Thursday, Alpine Public Library, 6:00pm (Ward 4)
- December 7, Wednesday, American Legion Hall, 12:00pm (Ward 3)

All citizens can attend any of the offered meetings; you are not limited to just the one assigned for the Ward you live in.

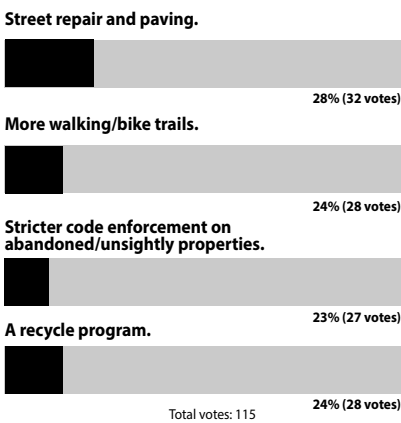
Opinions

ONLINE POLL

RESULTS

WHAT IMPROVEMENTS WOULD YOU LIKE TO SEE IN THE CITY OF ALPINE?

RESULTS



THIS WEEK'S QUESTION

Now the Avalanche asks:

What is your biggest concern with our society right now?

- Inflation and the cost of living.
- Abortion rights.
- Ongoing election fraud.
- Gun violence in schools and public places

Vote for this week's poll online at: www.AlpineAvalanche.com

LETTERS

Send us your letters.

Please include your name, address and phone number for verification purposes. Only your name and city will be published.

Letters should be no more than 300 words.

Letters become the property of the Alpine Avalanche and may be edited prior to publication for spelling and grammatical errors, clarity and length. Ad hominem attacks will not be accepted. Letters that include profanity or libel will not be printed.

Send your letters to editor@alpineavalanche.com by noon Monday for consideration.

STAFF



J.T. Maroney
Publisher

publisher@alpineavalanche.com

Kara Gerbert

Managing Editor

editor@alpineavalanche.com

Shelley Maroney

Office Manager

bookkeeping@alpineavalanche.com

Roxanne Hill

Staff Reporter

hill@alpineavalanche.com

Mesinda Llanez

Sports Correspondent

432-837-3334

www.AlpineAvalanche.com

Facebook: Alpine Avalanche

ALPINE AVALANCHE (014 800) is published every Thursday morning at 704 East Holland Ave., Alpine, TX 79830. Periodical postage paid at Alpine, TX.

POSTMASTER: Send address changes to Alpine Avalanche, P.O. Box 719, Alpine, TX 79831.

Subscription rates in Brewster, Jeff Davis and Presidio counties are \$42 per year, \$48 in-state and \$52 elsewhere.

Any erroneous reflection upon the character, standing or reputation of any person, firm or corporation will be corrected when such occurs in this newspaper and is brought to the publisher's attention.

BOONIEVILLE



Creating shared benefits for our schools and community

We are better together.

At Alpine ISD, partnership is more than a buzzword. Rather, it's one of our district's driving goals. That goal is to enhance family, school, and community relationships, partnerships, and communication.

More specifically, we create and support partnerships with local governments, schools, community organizations, and individuals to promote collaborations geared towards shared benefits for Alpine ISD students and the community. These partnerships are not an "add-on;" they're a critical part of our district strategy for becoming one of the best school districts in Texas.

Through partnerships with



MICHELLE RINEHART
Superintendent,
Alpine ISD

Sul Ross State University on GEAR-UP grants and a potential Principal Residency grant, we are preparing students for college success and creating opportunities for current Alpine ISD teachers to train to be instructionally-

focused school leaders.

Through an emerging partnership with the University of Texas Permian Basin, we're creating a grant-funded Teacher Residency Program that funds the last two years of college for aspiring teachers while participants work as paid Teacher Residents in Alpine ISD schools.

Through a potential partnership with four surrounding school districts, Alpine ISD hopes to launch a grant-

funded National Board Certification Cohort in the Big Bend that will help high-performing teachers earn their NBCT certification and a corresponding \$7,000 annual salary boost.

Through partnerships with Big Bend Regional Medical Center, Alpine Community Centers, and area businesses, Alpine ISD is working to launch a desperately needed childcare center to provide high-quality childcare to infants and toddlers across our community, a proven driver of economic growth.

Through partnerships with Brewster County Sheriff's Office, Alpine Police Department, and area law enforcement agencies, Alpine ISD continues to ensure the safety and security of our students and staff.

We partner with our stu-

dents' families to create strong, trusting relationships between home and school, where parents feel connected, teachers feel supported, and students receive what they need to develop to their full potential.

However, we don't engage in these partnerships just for the sake of partnership. Rather, we partner so that we can solve problems, create new opportunities, and construct shared benefits that none of us could achieve alone.

At Alpine ISD, our vision is to be the best people working together to be the premier school district in Texas and the educational choice in our community. When our schools prosper, our community prospers. Through partnerships, we're creating an even better Alpine ISD and an even better Alpine.

Let's stop time change madness in Texas!

The dumbest collective human experience we exercise twice a year is switching our clocks forward one hour, then back one hour just four months later. We are the only species that compensates for the tilt of the axis of the earth, other than the folks in Hawaii and Arizona.

This strange ritual has become ingrained in our lives since 1918 started when the U.S. Congress decided to manipulate time by passing the Standard Time Act to save energy and create time zones. Back then, coal was our exclusive energy source, and ensuring that Americans had more daylight working hours made sense.

Today, there is no reason



LYLE LARSON
Texas House of
Representatives, Dist. 122

to continue this practice. In fact, in 2008 the U.S. Department of Energy determined that sticking with one time year-round could actually save about 0.5% of electricity each day nationwide.

The practice of changing our clocks has other significant drawbacks. The risk of heart attack increases 10% in the days following springing forward, most likely caused by sleep deprivation and the interruption of biological rhythms. Studies also indicate that we're more likely to get sick, less productive and, frankly, just exhausted directly following the time change.

California and Florida have elected to observe day-

light saving time year-round. The nation is waiting for Texas to pick one - daylight saving time or standard time - and stick with it. If the voters elect standard time, the change will be automatic. If voters elect daylight saving time year-round, we will need Congress to amend federal law to allow states to remain on daylight saving time.

During the 2019 legislative session, my office filed legislation seeking to end this practice. Joint resolution 117, if passed, would have allowed Texans the opportunity to vote whether to stay on standard time year-round or daylight saving time year-round. HJR 117 passed the House 133-9.

Two Republican senators and one Democrat asked to be the Senate sponsor of the

bill, but Lt. Gov. Dan Patrick decided to unilaterally kill the opportunity for Texans to lock the clock.

Had the bill passed in the Senate, it would have been the first time since daylight saving time was enacted over a century ago that voters in Texas would have had the opportunity to vote to end the biannual clock-changing process.

For the past century, Texas legislative efforts to do away with the biannual clock adjustment have been attempted many times. None of those efforts have come this close to passage.

We believe that our approach of allowing Texas voters to pick between keeping daylight saving time or standard time year-round provides the compromise needed to get this done.

LETTERS TO THE EDITOR

Bon Voyage Karen

Our dear friend and neighbor Karen Williams is moving to Oregon. Karen has been a vital part of our community for 46 years. She began her journey in Alpine being involved and working throughout the community in numerous endeavors.

Karen worked at the Sunshine House as director of

the meals program for several years. She opened Morning Star Stained Glass on historic Murphy Street in the early eighties, and in 1985, she began a seven-year stint in which she taught Art at Alpine Elementary School. Karen was a founding member and served on the steering committee of the Big Bend Food Co-op (a natural foods buying club) that

was started in the mid 70's and operated for over 25 years. Historic Alpine, Inc. welcomed Karen to their board where she served as treasurer, assisted with the Wall of Pioneers project and Gallery Night. Quetzal Imports, which she owned and operated participated in the first Gallery Night and remained a popular location each year until the retail store

closed in 2011. Karen and her late husband Scott were also founding members of the Alpine Montessori School.

A come and go reception will be held at the Galleria Sibley on Nov. 11th from 4 to 6 p.m. to wish Karen well as she enters this new chapter in her life.

Susan Bell
Alpine

Please stop at stop signs!

I need to check with Alpine ISD to see if they give a course on driving in the City of Alpine. Everything I learned doesn't apply in Alpine - do not stop at stop signs, speed through school zones, and talk on your cell phones while in school zones.

I thought living at the corner of W. Del Rio and Middle School Road protected me from bad drivers because it is in a school zone. I was very

wrong. On Oct. 26 I had a sign stolen that says "Respect-Stop-Thank You." That makes seven signs stolen at this corner so far. I guess the great Alpine drivers can not stand to be reminded that there are stop signs at the corner of W. Del Rio and Middle School Road.

My wife and I do not like Alpine drivers trying to broadside us when we are trying to leave our house just because they can't stop at a red stop sign. On Oct. 21 at 8:15 a.m., a silver

Toyota Tacoma ran through the stop sign going at least 60 mph, then ran through the next stop sign at North 14th Street. As the fall semester continues toward its end, the driving has gotten a lot worse.

I went to the police station, and asked them if they can come by in the morning because the driving is getting really dangerous. I have sent letters to the Avalanche Editor every year about the large percentage of drivers showing

zero respect for other people who live in Alpine. I have asked for a rebuttal from Alpine drivers about why they should not stop at stop signs. They can always say they believe in driving anarchy, and too bad to other people who live in the Alpine community and obey stop signs.

I just hope my wife and I will never get hurt by these anarchy drivers.

Kurt Mannchen
Alpine



Heard on the STREET

Will you vote or have you voted early, or will you vote regularly during the general election?



Jaiden Portillo, Alpine: I already voted. I did early voting, and felt it was just better to get it over with because I do forget a lot of things.



George Barrow, Alpine: I early voted yesterday. It was very easy and real simple. The ballot was easy to understand. The voting process lasted about 10-15 minutes, and I was very pleased to get my civic duty done.



Woody Pinkerton, Alpine: No, I have not voted. The Lord will lead whoever we need in office.



Michelle Ferran, Alpine: I will definitely vote, but it just depends on my time. If I could get there, I would do it early.



Janet Anderson, Alpine: I already voted early on Tuesday. It's funny because it's just piled on you from the television all the long lines, and I'm thinking, don't these places have two weeks of early voting? I don't understand why people wait until the last day when they know it's going to be horrible, and they have two weeks to go over and vote. I always vote early.

Send your community events to editor@alpineavalanche.com.

UPCOMING EVENTS

NOV. 10 Alzheimer's Webinar, will be available in Alpine from 9:00 a.m. to 4:00 p.m. to help people with Alzheimer's, dementia, or memory impairment. There is no fee but donations will be accepted. For more information call or text 432-386-2833.

NOV. 12 Horseshoe and Cribbage Tournaments, 9:30 a.m., Ken & Joe May Barnes Memorial Scholarship fundraiser at Terlingua Ghost Town horseshoe pits. Arrive by 9 a.m. to sign up. Barbecue plates served around noon followed by auction. All proceeds benefit Terlingua school graduates.

David R. Delaney Memorial 5k Run/Walk, 10 a.m. at Koker not baseball field, Loop Rd. in Alpine. Presented by Alpine Morale Welfare and Recreation. Signup



fee \$30, shirt and meal included. **Free Fall Festival,** hosted by the First Baptist Church from 3:00 p.m. to 6:00 p.m. located at 204 N. 4th St. There will be free games, a cake walk, hot dogs, and more.

NOV. 17 Brewster County Historical Commission, will have their next meeting at 3:00 p.m. at the Museum of the Big Bend.

ONGOING EVENTS

Alcoholics Anonymous, 502 E. Lockhart Ave. Schedules avail-

able on front door. For more information, call 915-562-4081 or aa-intergroup.org.

Alpine Lions Club meeting, noon Tuesdays at the BBT conference room, 5th St. and Brown St.

American Legion Post 79 meeting, 6:30 p.m., second Monday each month, Legion Hall, 306 W. Sul Ross Ave. Dinner provided.

American Legion Auxiliary meeting, 4 p.m., third Monday each month, Legion Hall, 306 W. Sul Ross Ave.

Big Bend Community Choral rehearsals, on Monday evenings at 6 p.m. in the First United Methodist Church sanctuary in Alpine. All are welcome, but first contact Andrew Alegria at Andrew.alegria@sulross.edu, call 432-837-8216, or visit bbchorale.wixsite.com/bbcc.

Citizenship Classes, at Alpine Public Library by appointment only, 805 W. Ave. E. 432-837-2621

ESL Tutoring, at Alpine Public Library, 805 W. Ave. E. Call 432-837-2621 to make an appointment.

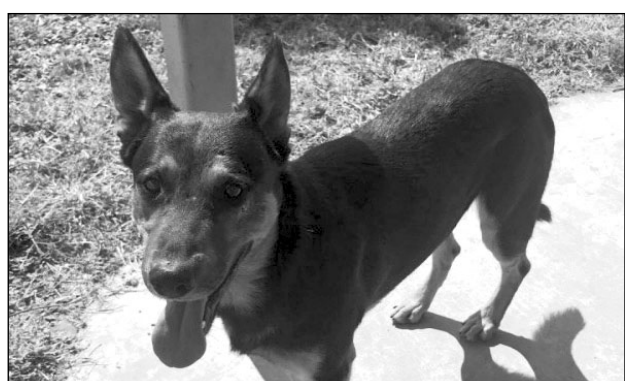
Halloween fun



Emory Yadon and Collin Sledge participate in the pumpkin patch bean bag toss as Anacelia Rivera looks on.

Avalanche photo by Kara Gerbert

PET OF THE WEEK



Alpine Humane Society Pet of the Week is Alonzo. Alonzo is a sensitive and intelligent dog. He was a bit shy on his first days in the Shelter but is coming out of his shell. So far, he has a couple of female companions with which he feels comfortable.

He is very aware of his surroundings and knows how to check the latches on the gates. He follows his handler loyally and may be a good candidate for off-leash training or ranch living. In short: intelligent, sensitive, and handsome. The perfect partner for life.

Pet promotions are courtesy of Alpine Humane Society. Alpine Animal Services handles pet adoptions at the city shelter, 10 a.m. to 1 p.m. and 2 to 6 p.m. Monday through Friday at 2900 E. Old Marathon Highway. For information about shelter pet adoptions, cremation services, or lost/found pets, call the Shelter at 432-837-9030.

The Alpine Humane Society Thrift Store and Cattery is at 706 N. 5th Street in Alpine, open 10 a.m. to 5 p.m. Monday through Saturday. The Pet Pantry recently moved to 600 N. 5th Street. The AHS Helpline is 432-837-2532. To view adoptable pets, visit Pet-Finder.com or www.alpin-humane-society.org, and check us out on Facebook and Instagram.

Tires Parts Accessories Service 24 HR roadside

Everything to keep you running

& more!

2601 E. Hwy 90
Alpine
432-837-5030

LATINOS HACEN HISTORIA

Latinos for America First alienta a la comunidad de votar por principios y valores conservadores.

CREEMOS EN DIOS, FAMILIA Y PATRIA

QUEREMOS MEJORES TRABAJOS Y EDUCACIÓN DE CALIDAD

ABOGAMOS POR LOS NO NACIDOS Y EL MATRIMONIO TRADICIONAL

¡YA NO VOTAMOS POR DEMÓCRATAS!

Nuestras comunidades han sufrido suficiente por las fronteras abiertas y el engaño político.

LATINOSFORAMERICAFIRST.COM

LATINOS MAKE HISTORY

Latinos for America First encourages the community to vote for conservative principles and values.

WE BELIEVE IN GOD, FAMILY, AND COUNTRY

WE WANT BETTER JOBS AND QUALITY EDUCATION

WE ADVOCATE FOR THE UNBORN AND TRADITIONAL MARRIAGE

WE NO LONGER VOTE DEMOCRAT!

Our communities have suffered enough from open borders and political deceit.

LATINOSFORAMERICAFIRST.COM

Calling All Friends OF **KAREN WILLIAMS**

PLEASE JOIN US to wish our dear friend the best in her new Oregon Adventures **FRIDAY 11/11/22 | 4-6 pm** at Galeria Sibley 103 W. Holland, Alpine

Former Hollywood actor recalls filming in Shafter



Shafter was the filming location for the 1971 movie, "The Andromeda Strain."

Avalanche photo by Roxanne Hill

BY ROXANNE HILL
Staff Writer

The Big Bend's vast landscape has served as an inspirational backdrop for filmmakers and actors, including many who have honed their creativity in the high desert.

Classic Western films such as the iconic "Giant," was filmed in Marfa in the 1950s, and more recently, "No Country for Old Men" and "The Three Burials of Melquiades Estrada" were both filmed on location at Big Bend National Park and Lajitas.

Many may be surprised to learn that Shafter, a little-known ghost town located 18 miles north of Presidio on U.S. Highway 67, became an inspiration for the science fiction movie genre when "The Andromeda Strain" was filmed there in 1970.

Veteran Hollywood actor Mark Jenkins talked to the Avalanche about his experiences while filming "The Andromeda Strain," and working with well-known movie director Robert Wise. Wise won the Academy Award for Best Director and Best Picture for his musical films "West Side Story" and "The Sound of Music." Wise directed Jenkins briefly during the outdoor scenes on location in Shafter.

"The Andromeda Strain" is about a small New Mexico town where nearly all of its 48 residents perished after a military satellite returned from space.

"They hired a bunch of local people to play the townspeople," said Jenkins, whose film career launched in 1966, only a few years before the film was shot in Shafter.

"In the beginning of the movie, it shows this military van with a radar or antenna on the top of it spinning around, and myself and another soldier are inside. I am on the microphone broadcasting back what I am seeing. We are seeing dead people everywhere, and before long, we join them."

Jenkins recalls meeting many of the locals who played parts in the film, and they all had lunch together. It was an enjoyable experience for a new Hollywood actor to be a part of a movie in such a desolate area of Far West Texas.

"It was in the middle of nowhere, very empty, and it was so not close to anything but the Mexican border," he recalled. "When we stopped shooting, we went across the border to party."

Jenkins left Hollywood in the late 1970s when he moved to Seattle, and started a career in theatre. He also worked on the stage in Los Angeles, New York, and Seattle.

In 1986, Jenkins had another movie role in Texas where he was cast with Willie Nelson in "Red Headed Stranger," a Western filmed near Austin.

About Shafter, Jenkins added, "It was interesting being in that part of the country and being so far away from everything. It was kind of exciting."

Shafter was once a bustling silver mining town, but the population has dwindled to a few families in this tiny, unincorporated community in Presidio County. But for many locals and visitors, a cinematic piece of Hollywood remains.

CHILI • FROM 1

very first Terlingua Chili Cook-Off.

The term "bowl o' red" began in the 1880s in San Antonio, Texas, where a market was set up with stands in which chili- or "bowls o' red" as they were called- were sold by women who were dubbed "chili queens." They began by feeding men in Military Plaza and have continued for two hundred years. Though recipes vary, meat and dried chiles (peppers) are the staple. There are certain ingredients, however, that nowhere in Texas chili history are allowed. In fact, the official rule books for the chili cookoffs prohibit beans and tomatoes from being included in the chili competition. This distinction is what set everything into motion.

Steeped in tradition, the Tolbert Chili Cookoff Group hosts the Frank X. Tolbert and Wick Fowler Original Terlingua Chili Cookoff. Located behind the old Terlingua store, this event occurs every year on the first weekend of November. While this contest is based on chili, the group have stepped

up and added a few more challenges to their weekend line-up. There is a BBQ competition, a bean competition, a salsa competition, and even a margarita competition. It is undoubtedly a weekend full of all the food that makes Texas great. Competition and food are not all that this fun-filled weekend has to offer; in fact, the 'Behind the Store' cookoff has an all-star lineup of Texas musicians for everyone to enjoy.

The 2022 music entertainment for the 55th Annual Original Terlingua Chili Cookoff consists of none other than Ray Wylie Hubbard. The Oklahoma born singer/songwriter has been a Dallas native since 1954. He is known for catchy tunes such as "Up Against the Wall, Redneck Mother", made famous by Jerry Jeff Walker, as well as "Choctaw Bingo" and "Snake Farm". He's had a lengthy career on the Texas music scene. Hubbard is not the only familiar talent gracing the stage at this venue. The man who is considered to be the father of the progressive country music

scene in Texas, Gary P. Nunn, will also perform. The musical lineup also includes Mark David Manders, Nikki Lane, Thomas Michael Riley, Matt Castillo, Kathryn Legendre, Nathan Colt Young, and local favorites Los Pinche Gringos.

This isn't just a chili competition with music that goes on where this event is concerned. The Tolbert Chili Cookoff Group also contributes proceeds of their sanctioned events to local charities such as Terlingua schools, Terlingua Fire, and EMS. In honor of the co-founder of the event Wick Fowler, their primary beneficiary is

the ALS Association of Texas.

ELECTION • FROM 1

Marathon. Voters in Pct. 5 can cast early ballots at the Panther Junction Visitor Center in Big Bend National Park, and Pcts. 6 and 7 may cast early ballots at the J.W. "Red" Patillo Community Center on Highway 118 in Study Butte.

On election day all registered voters must cast their ballots in the precinct in which they are registered.

Tuesday, November 8th is election day and the last opportunity for the registered voters to cast their ballots for this mid-term election. Voters in Pct. 1 may cast their ballots at the new location located at the Assembly of God Fellowship Hall, 1802 N. Hwy 118, across from Alpine High School. For those vot-

ers in Pct. 2, ballots may be cast at the Val Clark Beard Complex, 203 North Seventh Street in Alpine. Polling location for Pct. 3 will be the Marathon Community Center located at 2nd Avenue and Avenue E. Voters registered in Pct. 4 may cast their ballots at the Alpine Civic Center-Council Chambers at 803 W. Holland Ave. For Pct. 5, voters may cast their ballots at the Panther Junction Visitor Center in Big Bend National Park. Precincts 6 and 7 will cast their ballots at the J.W. "Red" Patillo Community Center in Study Butte just off Hwy 118. Precinct 8 voters may cast their final ballots at the Food Pantry of Alpine, 933 East Gallego Avenue in Alpine.

COUNCIL • FROM 1

guez stated that she understood the disappointment of the constituents and reminded the council that as council members they were tasked with serving those who elected them. She was the lone vote against this action item, with the other three council members who were in attendance in favor.

Three of the five action items on the agenda were all resolutions to approve directives for

different boards and commissions for the fiscal year 2022-2023. The last action item on the agenda was the approval of a resolution adopting a new rental agreement and updated fee schedule for the Alpine Civic Center.

The next regularly scheduled city council meeting is set for Tuesday, Nov. 15, at 5:30 p.m. in the city council chambers and via Zoom video conference.

Sponsored by:

capitalfarmcredit.com
NMLS493828

432.837.5948 | 108 West Avenue E | ALPINE

ROSSELL LIVESTOCK AUCTION SALES, INC.
SALE DATE: MONDAY, OCTOBER 31, 2022

1545 head of cattle sold on a higher market, with excellent buyer attendance. This is the top of the market and prices range down from this according to quality, quantity, condition, and fill.

COMPARED TO LAST WEEK:
Stocker Calves: \$5.00 to \$12.00 higher
Feeder Cattle: \$5.00 to \$10.00 higher
Packer Cows and Bulls: Cows Steady
Bull \$7.00 higher

300# - 400# Steers	212.00 to 220.00
300# - 400# Heifers	182.00 to 195.00
400# - 500# Steers	190.00 to 212.00
400# - 500# Heifers	172.00 to 182.00
500# - 600# Steers	196.00 to 212.00
500# - 600# Heifers	163.00 to 172.00
600# - 700# Steers	174.50 to 196.00
600# - 700# Heifers	149.00 to 163.00
700# - 800# Steers	158.00 to 174.50
700# - 800# Heifers	145.00 to 149.00
Packer Cows	70.00 to 78.00
Canner & Cutter Cows	60.00 to 68.00
Packer Bulls	88.00 to 98.00
Feeder Bulls	75.00 to 82.00
Cow / Calf Pairs - Top Half	1200.00 to 1325.00
Bred Cows - Top Half	Not well tested

Keeping West Texas Connected

Sanderson, Sheffield, Comstock & Langtry - 100% fiber Internet is now available in your area!

What is 100% fiber Internet?

Fiber Internet is cutting-edge technology that provides symmetrical speeds of up to 1 GIG!

This means little or no lag time when streaming movies, playing video games, and more!

BBT is proud to deliver local, reliable service.

Give us a call at 800.592.4781 or visit bigbend.com to sign up today.

EXHIBIT C-2

ALPINE INDEPENDENT SCHOOL DISTRICT
STATEMENT OF REVENUES, EXPENDITURES, AND CHANGES IN FUND BALANCE
GOVERNMENTAL FUNDS
FOR THE YEAR ENDED JUNE 30, 2022

Data	10		60		98	
	General Fund	Capital Projects Fund	Other Funds	Total Governmental Funds		
REVENUES						
5700 Local and Intermediate Sources	\$ 6,940,286	\$ 51,180	\$ 2,081,079	\$ 9,072,545		
5800 State Program Revenues	4,248,203	-	182,710	4,430,913		
5900 Federal Program Revenues	291,466	-	3,303,933	3,595,399		
5020 Total Revenues	11,479,955	51,180	5,567,722	17,098,857		
EXPENDITURES						
0011 Instruction	4,955,228	-	2,160,055	7,115,283		
0012 Instrl. Resources & Media Services	203,846	-	-	203,846		
0013 Curriculum & Instrl. Staff Dvlpmt.	80,085	-	82,295	162,380		
0021 Instructional Leadership	57,994	-	247,094	305,088		
0023 School Leadership	755,966	-	98,620	854,586		
0031 Guid. Counseling & Evaluation Srves	248,239	-	699,657	947,896		
0033 Health Services	58,771	-	-	58,771		
0034 Student Transportation	1,016,039	-	-	1,016,039		
0035 Food Services	37,932	-	511,873	549,805		
0036 Extracurricular Activities	823,611	-	-	823,611		
0041 General Administration	743,712	-	-	743,712		
0051 Facilities Maintenance and Operations	1,282,117	-	157,070	1,439,187		
0052 Security and Monitoring Services	135,324	-	61,785	197,109		
0053 Data Processing Services	289,359	-	-	289,359		
0061 Community Services	862	-	-	862		
0071 Debt Service - Principal	39,873	-	460,000	499,873		
0072 Debt Service - Interest	5,050	-	762,950	768,000		
0073 Debt Service - Bond Issuance Costs	-	-	3,795	3,795		
0081 Facilities Acquisition and Construction	314,054	14,888,701	-	15,202,755		
0093 Payments to Member Districts of SSA	159,481	-	-	159,481		
0099 Other Intergovernmental Charges	265,571	-	-	265,571		
6030 Total Expenditures	11,473,114	14,888,701	5,245,194	31,607,009		
1100 Excess (Deficiency) of Revenues Over (Under) Expenditures	6,841	(14,837,521)	322,528	(14,508,152)		
1200 Net Change in Fund Balance	6,841	(14,837,521)	322,528	(14,508,152)		
0100 Fund Balance - Beginning	9,474,735	15,929,347	1,187,711	26,591,793		
3000 Fund Balance - Ending	\$ 9,481,576	\$ 1,091,826	\$ 1,510,239	\$ 12,083,641		

The notes to the financial statements are an integral part of this statement.

FARMING and RANCHING IS A WAY OF LIFE

BARB WIRE, T-POST, CHUTES, FENCING SUPPLIES & MORE



2700 E. HWY 90
ALPINE TEXAS 79831
432-837-7429

★ EST 1891

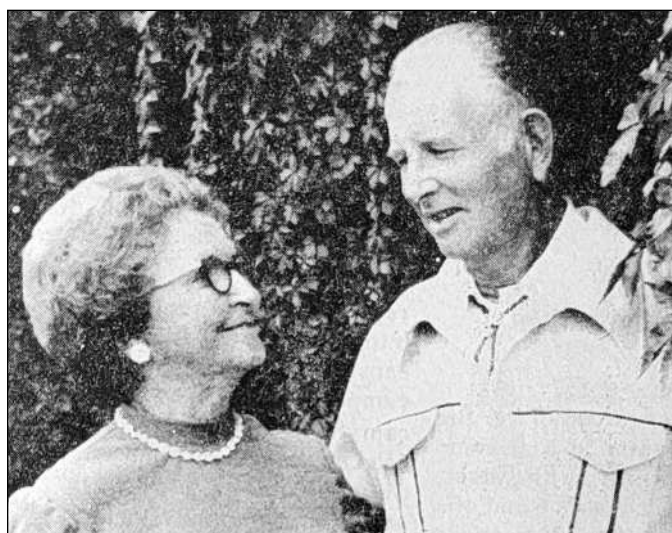
LOOKING BACK

Alpine Avalanche

SERVING THE BIG BEND
AND DAVIS MOUNTAINS COUNTRY

November 10, 1977

The Texas Omicron ETA Chapter of Beta Sigma Phi in Marfa has chosen Vonnelle Davis as 1978 Valentine Queen. Vonnelle has been active in Beta Sigma Phi for six years, and is now serving as president of her chapter. She has lived in Marfa for 10 years, and is employed with Southwestern Bell in the Alpine office.

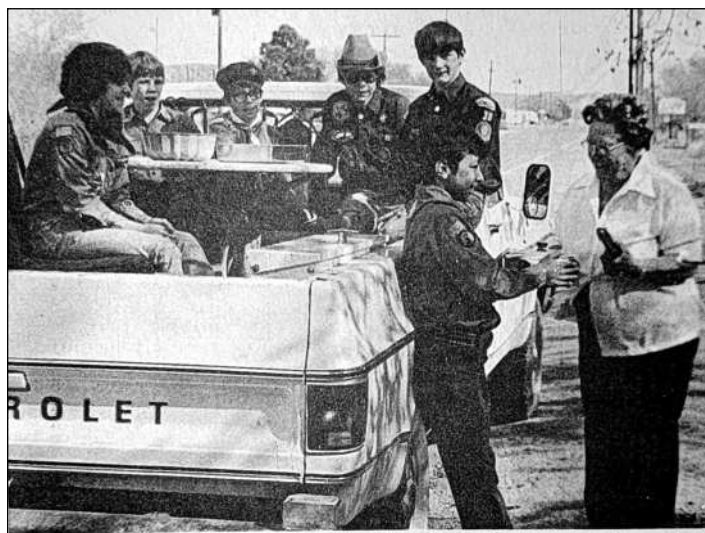


November 10, 1977

Everyone is invited to share in the celebration of the Golden Wedding Anniversary of Mae and Tot Lawhon from 6-10 p.m., Nov. 12, at the Sunshine House. A dance and reception is being given by their daughter and son-in-law, Janette and Dick Bowers, and the grandchildren Connie, Fred, Clay, Cole, Casey, Kelly, and George.

November 17, 1977

Joel Nelson fires during the Sul Ross State University Range and Wildlife Club's turkey shoot Sunday. Nelson competed with about 100 other participants for 25 turkeys.



November 24, 1977

Moy Martinez offered baked goods to Lela Weatherby recently when the Fort Davis Boy Scouts had a bake sale and nobody came. So the Scouts went to the people. In the back of the truck are Lonnie Bloys, Tex Bloys, Regan Crowder, Ricky Crowder, and Graydon Hicks.

Wisteria doesn't produce many flowers

Dear Neil: I have a full wisteria bush, but it has only had a few blooms these past few years. It has grown abundantly, but almost no flowers. Why might that be?

There are several possible reasons. First, if you are pruning it in the fall or winter, you're cutting off the flowering wood. Wisterias bloom on growth they made in the prior year, so hold off on pruning until after the blooming season. If it's in shade, that will seriously impact its blooming. If you're giving it a great deal of nitrogen in late summer and fall, that can come at the expense of production of flowers. Nitrogen promotes vegetative growth. It might be a little late to try this (usually better in early September), but root-pruning often helps. Use a sharpshooter spade to cut a slit 18-24 inches

GARDENER'S MAILBAG
by neil sperry

out from the trunk all the way around the plant. The shock of having roots cut often will trigger the plant to produce flower buds.

Dear Neil: Is there a life expectancy to a border of dwarf yaupon hollies? I have some that are about 30 years old, and they are looking very ragged. I'm trying to keep them at 24 inches in height, but some of them are leggy, and others are quite sparse.

When we prune a shrub repeatedly at a height that is less than its normal mature height, it eventually wears out. Dwarf yaupon hollies if left unpruned would grow to be 36-42 inches tall. Each time your plants have tried to produce new growth, you have essentially been punishing them by removing it. As time has passed by they have run out of

usually happens after 15 or 20 years, so you're getting extra time already. You'll be very pleased with the look of new plants in your landscape.



Wisteria the way it's supposed to bloom in the spring.

Dear Neil: I have a new greenhouse to feed my gardening habit. I have ferns, cacti and succulents, and some orchids. What would the best temperature be for the winter?

I would suggest 60F-64F. More importantly, don't let the daytime temperatures skyrocket on clear, cold days. Sunny weather can be a real prob-

lem if the greenhouse is not very large. The volume of air in smaller greenhouses is small, and temperatures rise in a hurry. Make sure you have made good provision for ventilation. Also, be sure you have a reliable backup heat source that does not require electricity should there be a power outage. Camp stoves that use kerosene as fuel are not

good because they will produce smoke and fumes that will harm your plants and discolor the greenhouse surfaces. Serious enthusiasts will have a generator nearby.

Have a question you'd like Neil to consider? Email him at mailbag@sperrygardens.com. Neil regrets that he cannot reply to questions individually.

- ACROSS**
- to Houston: "One small step for ... one giant leap ..."
 - horse's daddy
 - tropical birds
 - Andrews County is in ____ Texas
 - only hit for TX band "Bubble Puppy": "____"
 - Sasafrass" (1969)
 - Texas "Turtle Lady," Loetscher
 - George Jones hit: "____ Me (Without You)"
 - Ma & ____ Ferguson
 - TXism for "hand"
 - TXism: "speechifier"
 - vintage hat (2 wds.)
 - govt. agents
 - Houston has been the ____ site for three Super Bowls
 - TXism: "____ tight he squeaks when he walks" (miser)
 - those convicted of the least of the serious crimes in Texas: "state ____"
 - TXism: "wouldn't ____ a buscuit" (harmless dog)
 - Shriner hat
 - those who go 65 in a 55 zone
 - ____ enemy
 - "Powell's ____" is the longest in Texas
 - Sinton's county (2 wds.)

- Oklahoma's 21st governor, David
- Fort Worth univer.
- TXism: "never laid eyes ____" (unseen)
- description of a basket
- mo. the State Fair starts
- TXism: "saddles his ____ horse" (independent)
- "Lake O' the ____"
- TX Lefty Frizzell hit: "Saginaw, ____"
- Nabisco "Wheat ____"
- sharpen
- Beatty of "Big Bad John" with TX Jimmy Dean
- TXism: "fit ____ fiddle" (healthy)
- TXism: "timid ____"
- in Wood County on U.S. 69
- Texas "Asleep at the Wheel" label
- bird "casas"
- tune of TX Henley's "Eagles": "Pretty ____ All in a Row"
- "____ out" (chooses not to participate)
- TXism: "the whole ____ and caboodle"
- this Clark was 8th Texas gov. (init.)

- DOWN**
- Hereford: "The Town Without ____ ache"
 - hospital caregiver
 - mild expression of anger or annoyance
 - actress in Texas
 - epic "Giant" (init.)
 - James Bond titles (3 numbers)
 - TXism: "stiff as a ____ rope"
 - "cuarto de hombres" (2 wds.)
 - breakfast drink (abbr.)
 - early name for the Rio Grande: "Rio de ____ Palmas"
 - salsa and french onion
 - football shoes
 - TXism: "he'd argue with ____ post"
 - ____ Worth
 - in Hamilton County on U.S. 281
 - Margaret ____ Houston
 - England resident
 - Uber charges
 - TXism: "tight as ____ fat horse" ____
 - group of witches
 - TXism: "throw ____" (join)
 - ____ fide
 - "____ out" (outburst of emotion)
 - Alonso Alvarez de ____ named
 - 25-down
 - this Ward is coach of San Antonio's XFL team

TEXAS CROSSWORD

by Charley & Guy Orbison
Copyright 2022 by Orbison Bros.

BARGAINS OF THE MONTH

23.99 American Kennel Club/Petmate® 21 in. Round Shaggy Pet Bed # 1100 034 99	9.99 YOUR CHOICE Holiday Wonderland® 100 ct. Traditional Mini LED Light Set # 1100 048, 049, 050 B12	10.49 YOUR CHOICE Holiday Wonderland® 100 ct. Starry Micro LED String Light Set # 251 000, 004, 008 B12
9.99 YOUR CHOICE Rayovac® High Energy™ 30 ph. AA or AAA Alkaline Batteries E 341 020, 344 375 B12	8.99 Peak® Gal. 50/50 Antifreeze # 128 893 FB	7.99 Master Electrician® 3-Outlet Power Stake # 140 743 96
19.99 DeWALT® 40 pc. Impact Ready® Screwdriver Set # 177 359 85	14.99 Stanley® FatMax® 25 ft. x 1-1/4 in. Tape Measure # 728 253 04	

MORRISON TRUE VALUE
301 N 5TH ST
ALPINE TEXAS 79830
432-837-2061
www.morrisonhardware.com

True Value.
Sale ends 11/30/22

Find the right products for your project at your local True Value®.

Last Puzzle Solution

S-1608

West Texas National Bank™

YOUR LOCALLY OWNED AND HEADQUARTERED RELATIONSHIP BANKERS



Phillip Carey Promoted to Market President

West Texas National Bank™ is pleased to announce that Phillip Carey has been promoted to Senior Vice President/Market President of their Alpine Branch. In this position, Phillip will oversee and develop WTNB’s Retail, Commercial and Agricultural Lending relationships as well as deposit relationships in their Alpine and Terlingua Markets.

“We are very pleased to have found Phillip to join us in Alpine. His 14 years of banking experience, connections to the community, and, both his and his wife’s enthusiastic desire to relocate back to Alpine and raise their family there, will certainly make this transition smooth and comfortable for all stakeholders,” Brady Ross, SVP/West Texas Division manager.

The Alpine Branch thanks David Rogers for his almost 16 years of branch leadership and is delighted he will remain on staff as a Senior Vice President / Commercial Real Estate Lender.

Phillip started at WTNB in Alpine as a Personal Banker shortly after graduating from Sul Ross State University in 2008 and has since worked in the Midland, Monahans and Uvalde Markets before accepting his “dream job” back in Alpine. “Ever since beginning my career here in Alpine, it was always my desire to return to the bank that started my career,” states Phillip. Over the past 14 years, Phillip has mainly focused on Agricultural, Commercial & Industrial Lending as well as Commercial Real Estate Lending and has enjoyed getting deeply involved in the communities he serves. Phillip is proud to have been nominated and is currently serving a 3 year term on the Texas Bankers Association Bank Leadership Council.

Phillip received a Bachelor’s of Science in Animal Science from SRSU and married into a family of Sul Ross graduates with his wife and father-in-law both having multiple degrees from SRSU. Phillip is happily married to his wife of 14 years, Jena, who is an Alpine High School graduate where she was a cheerleader and the mascot Belvie. They have three wonderful children, two of whom attend Alpine Elementary School. “It’s great to be able to raise our children in Alpine – where schools are so strongly supported by the community,” states Phillip.

Over the years, Phillip has been involved in the ANRS & Rodeo Exes, Uvalde Lions Club, Monahans Lions Club, Monahans Ambassadors, Ward County Crime Stoppers and the Sul Ross Alumni Association where both he and his wife are Lifetime Members. In 2020, Phillip was honored to be awarded the Monahans Ambassadors – Ambassador of the Year award. Upon being asked why Alpine, Phillip states, “it is important to be a part of community, not just to live in a town, but to actually be really involved. That is what I love about Alpine – you can be involved, you can make a difference, you can get to know members of the community on many levels. Alpine is definitely something special.”

Phillip is looking forward to getting more involved in the Alpine community and bringing his experience and skills to his new role as the Alpine Market President of West Texas National Bank™.

Stop on by and welcome Phillip in his new role to our Alpine Branch

101 East Avenue E | Alpine, TX 79830 | 432.837.3375

Lobby Hours: Mon – Fri 9:00 am – 3:00 pm

Drive-through Banking: Mon – Fri 7:30 am – 6:00 pm | Sat 9:00 am – 12:00 pm

MISSION STATEMENT

We care for and equip our employees to exceed our customers’ expectations, serve our communities, and create value for all our stakeholders.

VALUES

- People:** We give our time and energy to build trustworthy, caring relationships.
- Integrity:** We do the right thing - even when no one is watching.
- Service:** We are servants in our communities, to our customers, and to one another.
- Excellence:** We relentlessly strive to exceed the expectations of all our stakeholders.

Agribusiness | Business & Commercial Lending | Construction & Commercial Real Estate | Energy Development | Home Mortgages
Land Acquisitions | Oil & Gas | Personal Banking | Real Estate Bridge Financing | Treasury Cash Management



MEMBER FDIC EQUAL HOUSING LENDER

Bank By Phone 800.250.8880 | NMLS 410435 | 877.493.7862 | 432.685.6500 | WTNB.com

Planning for the future is easy with TrasPecos Banks.

Let us help guide you with:

- Estate Planning
- Financial Caregiving
- Retirement
- Debt Management

These are your best years



TRANSPecos BANKS
Texas Banking at its Best.

402 W Holland Ave. | Alpine, TX 79830 | 432-837-0094
www.transpecosbanks.com



Member FDIC

Proud Alpine Bucks

Sponsors:



Sports

Thursday, November 3, 2022 Alpine Avalanche Page 9

Alpine clinches coveted title

BY J.T. MARONEY
Publisher

If you are a Lady Buck Volleyball fan, then this is the week you have been waiting a long time for. District play ended with a 2-way tie for first place between the Alpine Lady Bucks and the Crane Lady Birds. Because of a new district rule, both teams were declared co-district champions. A tie-breaker match was set between these two teams in neutral Fort Stockton on Saturday afternoon. At stake was the coveted first seeding in the bi-district playoff game, not to mention an unofficial District Championship.

Alpine traveled well. The football teams and rowdy supporters from both towns made for a raucous and packed gym. Alpine would dominate set one against the Lady Birds with a score of 25-16. Effort during the rematch stood out as the team played clean and fast with minimal errors.

Sets two and three would go in favor of the Lady Birds by small margins, 25-20, and 25-23 respectively. With their backs



Alpine Lady Bucks square off against Crane for the District title.

Avalanche photo by JT Maroney

against the wall, Alpine willed out a victory in set four, 25-20, forcing a fifth set. With everything on the line, the Lady Bucks dug deep and completed the comeback, dominating the fifth and final set, 15-8. Juniors Adayna Garcia and Nova Carrasco led at the net in attempts and kills with few errors. Top servers were junior Ali Maroney and sophomore Jaycee Portillo. Sophomore Hope Dominguez also showed her skills on the court as an all-around player.

Tuesday night's matchup against Brownfield will ce-

ment the team's place in Alpine history books. The Lady Bucks won Bi-District, the first time in four years. Junior Mia Morris said about the game, "Most of our team has been playing together since third grade, we have endured and experienced a lot over the years. We've had undefeated seasons in middle school, we have won tournaments and we have also fallen short. We laughed and cried together and learned lessons. Winning District and Bi-District with this team has been the

See VOLLEYBALL • 10

sweetest moment yet! It is something truly special."

Right out of the gate the Lady Bucks seemed lost and found themselves quickly fighting from behind. A concentrated rally allowed the girls to erase a 6-point deficit and go on to win set one, 25-20. Front row hit-

ter Garcia and Maroney led the attempts during the set. The Lady Bucks also won set two, 25-23, but not without a fight from the Brownfield Cubs, who battled admirably the entire game. That was evident as the Bucks went on to drop set three 25-12. Not to be

Fightin' Buck Schedule

FOOTBALL

Nov. 4: Alpine vs. Crane Varsity 7:30 p.m.

VOLLEYBALL

Nov. 5: Alpine vs. Friona- Area @ Andrews 1:30

CROSS COUNTRY

Nov. 3: State Championship Meet @ Round Rock TBA

JV Bucks battled Reagan County

BY MESINDA LLANEZ
Sports Correspondent

The JV. Bucks traveled to Reagan County last Thursday to play a 7-1 Reagan County team. The Bucks and Owls started things off quickly, as the Owls scored within minutes. Soon after, freshman Maverick Milligan was able to run in for a touchdown, however the extra two-point conversion was no good, leaving the Owls ahead 8-6. The Owls scored again against the Fightin' Bucks; the score was now 14-6. The Bucks battled as freshman, Dae Hardwick threw a beautiful pass to freshman Alec Ramos in the end zone, but the two-point conversion was no good, thus



Bucks JV Football faces off against the Reagan County Owls.

Photo by Mesinda Llanez

leaving the Bucks behind 14-12. The Owls were able to capitalize on a safety against the Bucks, making the score 16-12, and before the first quarter was over, they were able to score one more, leaving the Bucks trailing by a score of 24-12. Within the first few min-

utes of the second quarter, freshman A.J. Llanez scored for the Bucks, but the two-point conversion again was no good for the Bucks and the Owls were able to put one more on the board be-

See FOOTBALL • 10

ATHLETE OF THE WEEK



HOPE DOMINGUEZ

Hope has stepped up and become a presence on the back row and an asset to our defense.

Brought to you by



Alpine Community Credit Union

111 N. 2nd St • Alpine, TX 79830
(432) 837-5156

Vote
Mark Chiles
for

**County Commissioner
Brewster Co. Precinct 2**

Chiles4Brewster.org

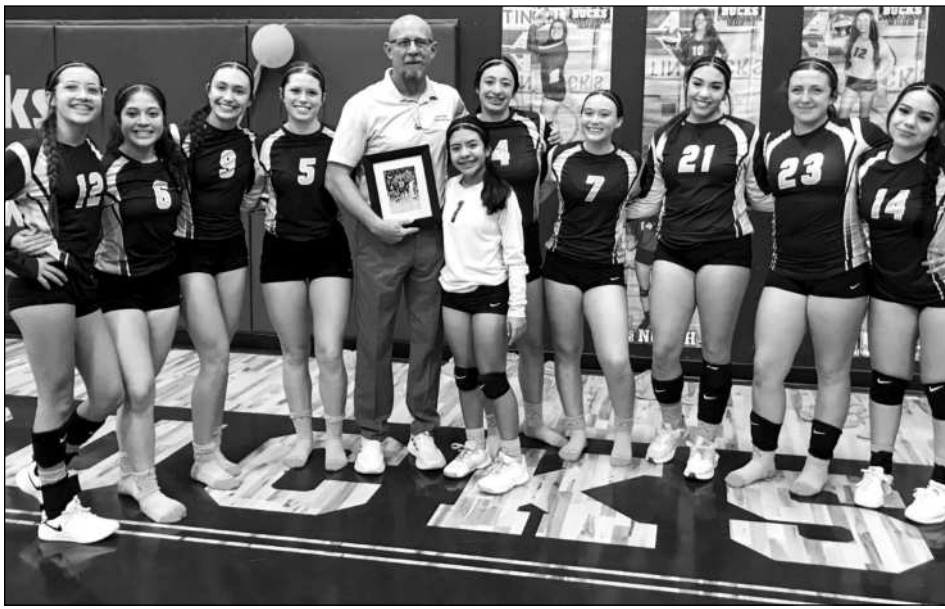


Political advertising paid for by Mark S. Chiles Campaign

JV Gold finishes season undefeated in District

The JV Gold Lady Bucks finished their season Oct. 25 in Alpine against the Presidio Lady Devils with a final record of 20-9, finishing out an undefeated record in District play, 8-0. In the photo are Naida Morris, Vianey Santos, Nevaeh Carrasco, Amanda Ahrens, Coach Chris Virdell, Chiquita Ramos, Ayvah Arauza, Karo Castillo, Elena Valenzuela, Kody Hawkins, and Rikki Vega.

Photo by Cynthia Payne



FOOTBALL • FROM 9

fore the halftime, leaving the Bucks behind by two touchdowns. As the second half began, the Bucks were faced with some injured players on the sideline and a deficit score of 30 -18 in favor of the Owls. The Bucks continued to battle, as Llanez scored for the Bucks bringing the score to within a touchdown of a tie game. The Owls were able to score again however, bringing the score to 36-24. The Fightin' Bucks kept marching down the field as Llanez scored with another touchdown for the Bucks and Milli-

gan with the extra two points, narrowing the points on the board to a score of 36-32. Both teams battled back and forth, however the Owls were able to put one more on the board with a final score of 42-32. Defensively, the Bucks were led by Junior, Sean Mendoza, Milligan, and Llanez. The J.V. Bucks will travel to Crane this Thursday for their final game at 6:00 p.m. The J.V. Bucks are now 5-3-1. Varsity will face Crane this Friday at Bucks stadium for senior night at Buck Stadium.

Area teams take volleyball titles



Bi-District wins sweep the Big Bend- Mountain region. The Lady Indians from Fort Davis, Lady Short-horns from Marfa and the Lady Mustangs from Marathon all competed and won Bi-District volleyball championships recently and move on to Area competition.

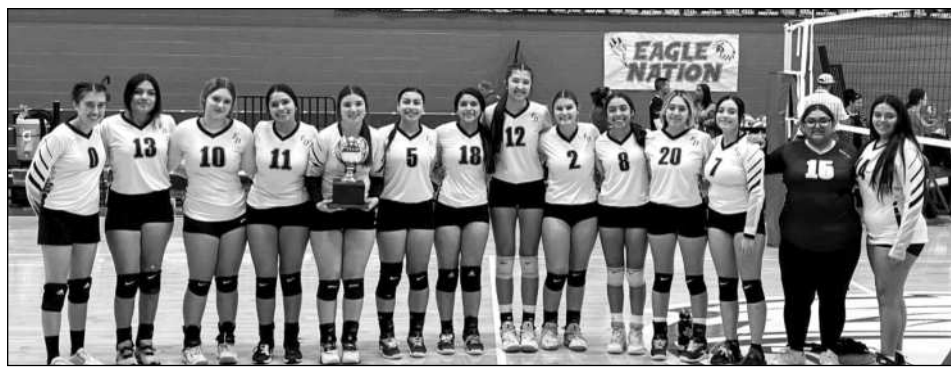
Courtesy photos

OLE CRYSTAL BAR

18YR AND UP WELCOMED

COME IN DEN AND CHECK OUT OUR DAILY DRINK SPECIALS AND GIVEAWAYS!

LIVE MUSIC THIS WEEKEND!



VOLLEYBALL • FROM 9

ousted, Alpine turned up the heat on set four and sent the Cubs back north for good. With accurate play from the front row and polished passes from the back row, the Lady Bucks closed set four 25-12 and claimed the golden trophy.

After the game, the Avalanche spoke to Head Coach Autumn Kilpatrick about what this win means to her program and her first year as a coach. "This has been an exciting year for the girls and for me as a new coach. They have earned the gold ball by putting in the work from day one. I get to watch these girls play their hearts out and leave with a championship for the second time this year. This proves how hard they have been working. I couldn't ask for a better team for my first year."

Alpine will battle to stay alive in the Area round of playoffs, facing Friona in Andrews this Saturday at 1:30.



The Alpine Lady Bucks faced off over the weekend on the final meeting with Crane. Both teams were tied with one loss in District and this meeting would determine the seeding for Tuesday's playoff game. The Lady Bucks won the game, becoming District Champions.

Avalanche photo by JT Maroney

GSM INSURORS OF WEST TEXAS

— Alpine Texas —

Bethany Ahern, Agent

432.837.7419

AUTO • HOME • BUSINESS • HEALTH • LIFE

BARGAINS OF THE MONTH®

23.99
American Kennel Club®/Petmate®
31 in. Round Shaggy Pet Bed
H 100 634 B6

9.99
YOUR CHOICE
Holiday Wonderland®
100 ct. Traditional Mini LED Light Set
T 195 548, 549, 550 B12

10.49
YOUR CHOICE
Holiday Wonderland®
100 ct. Starry Micro LED String Light Set
T 251 503, 504, 508 B12

9.99
YOUR CHOICE
Rayovac® High Energy™
30 pk. AA or AAA Alkaline Batteries
E 341 826; 344 575 B12

8.99
Peak®
Gal. 50/50 Antifreeze
H 128 693 F6

7.99
Master Electrician®
3-Outlet Power Stake
E 140 743 B6

19.99
DeWALT®
40 pc. Impact Ready® Screwdriver Set
R 177 359 B5

14.99
Stanley®
FatMax® 25 ft. x 1-1/4 in. Tape Measure
R 728 253 B4

Consumer responsible for taxes. While supplies last. TV-AD-354206 T12Z

MORRISON TRUE VALUE
301 N 5TH ST
ALPINE TEXAS 79830
432-837-2061
www.morrisonhardware.com

Sale ends 11/30/22
©2022 True Value Company LLC

Find the right products for your project at your local True Value®.

Honoring the Memory of Your Loved One

As a family-owned and -operated funeral home, we take our commitment to your family personally. We value your trust in us, and it is our honor to help you through your time of sorrow with compassionate service, professional guidance and a dignified tribute to your dear departed loved one.

Alpine Memorial FUNERAL HOME

CREMATIONS - PRENEED PLANS

Honor The Memories

Each service, unique and perfect in every way.

209 West Sul Ross, Alpine Texas | 432-837-2222
www.AlpineMemorialFuneralHome.com

OBITUARIES

E. Pitt Smith

E. Pitt Smith died Oct. 20, 2022, at his home. He was 92.

Mr. Smith was a native of Texas. He graduated from R. L. Paschal High in Fort Worth, Texas, and attended Texas Tech University in Lubbock, Texas. He received his under graduate degree in business administration, education, and range animal husbandry from Sul Ross State University in Alpine, Texas. He was part of the National Intercollegiate Rodeo Association throughout his college days.

In 1952 Mr. Smith married Hazel Mather of Marathon, Texas. After serving in the U.S. Army during the Korean war, he returned to Sul Ross, and received a Masters Degree in Education. In 1956 he joined the U.S. Food and Drug Administration. He served as field



investigator in the New Orleans, La., and Houston, Texas, districts, and as field supervisor in San Francisco, Calif., and Kansas City, Mo., districts. He served as district director in the Denver, Colo., District for 10 years, and district director in the Buffalo, N.Y., District for 20 years.

During his career with the FDA, Mr. Smith was instrumental in developing and managing a variety of precedent criminal and civil federal court cases involving fraud, and adulteration in the food, pharmaceutical, and medical device industries, along with the illegal dis-

tribution of drugs. He was responsible for establishing the first formal training in Food and Drug law for field personnel, and designed and implemented the initial courses for field supervisors. After over 40 years of service to the citizens of the U.S. and the U.S. government, he retired in 1996 to his home in Buffalo. His wife Hazel preceded him in death in 2017. They were married over 65 years.

Survivors include sister-in-law Sue Smith of Fort Worth, and numerous nieces and nephews of the Mather and Smith families.

Mass of Christian Burial will be held at 11 a.m. on Wednesday, Nov. 9, at St. Andrew Catholic Church, 3312 Dryden Road, Fort Worth.

In lieu of flowers, please consider a donation to the Disabled American Veterans or St. Jude Children's Hospital.

Jean Espy Everett

Jean Espy Everett (Nene) wife, mother, grandmother, great grandmother, a friend, and mentor to many, passed away peacefully on October 28th, 2022, surrounded by her family. Jean was born on March 9th, 1939, in Fort Davis, Texas to Pansy and (Big) Jim Espy. She is survived by her husband Tommy Everett of Fort Davis, TX, sister Pat Smith of Hobbs, New Mexico, sister Ann and Jim Duncan of Lake Whitney, TX, and Brother Jim and Sally Espy of Fort Davis, TX. Jean is survived by her three children Debby McIvor of Fort Davis, TX, Rick McIvor of Fort Davis, TX, and Scott McIvor and wife Julie of Fort Davis, TX and many nieces, nephews and great nieces and nephews.

Jean was always busy with her children and all their activities as they were growing up, whether it be working on family ranches, football, basketball, Stock Shows, and any other activity they participated in. In the late 1980s, during the Big Bend Livestock Show, she ran into her old friend Tommy Everett and their 30 plus year friendship and love story began. After they married in August 1989, they began their life together. They blended two families with Jean's three children and Tommy's children Cody Bob Everett and wife Shana of Tarzan, TX and Connie Voss and her husband Skipper of Waco, TX. In the mid 1990s the first grandchild arrived, Locke Ann McIvor of Fort Davis, TX, and then came Hadley McIvor of Dallas, TX, Mae McIvor of Portland, Oregon, Maverick McIvor of Abilene, TX, Casey Voss of Waco, TX, Jessi of Tarzan, TX and just recently the first great grandchild Rhodes Reed of Dallas, TX. Jean and Tommy loved all their grandchildren and tried to attend every activity they could.


Jean lived a full life, she touched and blessed many with her teaching, coach-



ing, and jewelry fairs. She began her coaching career in Fort Stockton, then on to Marble Falls, Llano, Northern California, Presidio, Del Rio, and then "retired" in Fort Stockton in 2001 and was also inducted into the Tennis

Coach Hall of Fame in New Braunfels, Texas. She then began her jewelry business and traveling to arts and craft shows across the Southwest. Her love of tennis and coaching called her back and she began coaching tennis at the Fort Davis Independent School District and was actively coaching at 83 years old, while still running her jewelry booth. Jean was always dedicated to living

See OBITUARIES • 12



SUNSHINE HOUSE INC.
Sunshine House Senior Citizens Center Meals on Wheels
402 E. Holland Ave. • Alpine, Texas 79830 • 432-837-5402
www.sunshinehousealpine.com

Thank you for the following donations:

Patsy Culver	Holland Investors, LLC
George and Sally Johnson	Anonymous
Celebration Liquors	Perrie and Tim Whalen Jr.
A+ Real Estate Co.	Printco
Prescription Shop Marfa	Arrowhead Well Services
Front Street Books	

Audrey Painter in memory of Robert Fields

Our Vision: A hunger-free, healthy community.
Our Mission: To provide quality nourishment and social enrichment in the lives of seniors, the homebound and disabled in Alpine, Texas.
Join us for lunch Monday through Friday, 11:30 - 12:30. • Cost is \$7.00 per person.
Sunshine House is an equal opportunity provider and employer.

CENTURY TRAILER COMPANY

2900 W. Dickinson Blvd. Fort Stockton, TX
432-336-8797
centurytrailersftstockton.com



Trailer Sales, Parts & Service, Truckbeds & Grill Guards

32' Gooseneck Brand

BIG BEND TITLE, LLC

Serving the Greater Big Bend Area

PROTECTING YOUR LARGEST SINGLE INVESTMENT!
YOU HAVE THE POWER OF CHOICE IN CHOOSING YOUR OWN TITLE COMPANY.
Now serving Brewster, Jeff Davis and Presidio Counties

Alpine Office: 608 E. Holland Ave. Alpine, TX 79830 (432) 837-9172 jdca@sbcglobal.net	Fort Davis Office: 309 State St. - Hwy. 17 S P.O. Box 813 Fort Davis, TX 79734 (432) 426-3288	Marfa Office: 212 Highland Ave. Marfa, TX 79843 (432) 729-4299
---	---	---

CENTER FOR BIG BEND STUDIES

28th Annual Conference



November 11-12, 2022
Sul Ross State University, Alpine, TX

The Conference is a two-day event showcasing multiple presenters and an exciting blend of archaeology, history, and culture of the Big Bend region. Complimentary Friday night social hour (beer & wine) with registration. Catered banquet Saturday night is additional fee.

For more information:

cbbs.sulross.edu • cbbs@sulross.edu • (432)837-8179



Featuring renowned border historian, **C.J. Alvarez**, author of *Border Land, Border Water: A History of Construction on the US-Mexico Divide* as Keynote Speaker.



JUST ARRIVED

<p>2022 FORD F-150 4X4 SUPERCREW XLT STOCK #22160T MSRP \$60,490 Save with 2.9% APR up to 60 months Ford Motor Credit Financing (with approved credit)</p> 	<p>2022 FORD EXPEDITION XLT MAX STOCK #22161T MSRP \$67,970 Save with 2.9% APR up to 60 months Ford Motor Credit Financing (with approved credit)</p> 
---	---

SPECIAL HAIL SAVINGS

<p>2022 FORD F-150 4X2 SUPERCREW XL STOCK #22151T HAIL PRICE \$35,885 MSRP \$45,88 \$10,000 DISCOUNT Save with 2.9% APR up to 60 months Ford Motor Credit Financing (with approved credit)</p> 	<p>2022 FORD F-150 4X4 SUPERCREW XLT STOCK #22139T HAIL PRICE \$49,220 MSRP \$59,220 \$10,000 DISCOUNT Save with 2.9% APR up to 60 months Ford Motor Credit Financing (with approved credit)</p> 
---	--

USED VEHICLES

<p>2018 FORD EXPLORER 59,000 MILES \$28,995</p> 	<p>2015 LINCOLN NAVIGATOR 40,900 MILES \$32,995</p> 	<p>2016 JEEP COMPASS 57,900 MILES \$14,995</p> 
--	---	--



2300 W. DICKINSON BLVD. FORT STOCKTON
432-336-3351 • 800-300-2713
Stockton Ford

Check out www.stocktonford.com for our inventory.
If it's not on our lot we can order it or find it for you!

OBITUARIES • FROM 11

life to its fullest, she loved making jewelry, cooking, canning rodeos, stock shows, coaching, tennis, fishing, and playing the slot machines. She was well known to have 3 slot machines going at once and when fishing, 3 poles going at once. In youth, she loved rodeos, sports, and showing the Espy's Rambouillet sheep. She later enjoyed showing sheep and steers with her kids and grandkids and placed at many of the major shows. She loved to cook especially when she was cooking for others, birthdays were very spe-

cial, and she loved making people their favorite desserts. There was always homemade fudge, divinity, and caramel at every Christmas and Bloys camp meeting. Spring and summer were spent canning and preserving everything she could find from every fruit tree in the area. You may have found her in your backyard picking fruit, in the middle of a local ranch harvesting apples off a tree or plucking a few of the Davis Mountain wild cherries off of the side of the road. She passed on her love and her skills of all these

things to her kids, grandchildren as well as many others. Anyone who met her never forgot her. We, her family, can't say how many times we have randomly met someone that she has touched. In everything she did she loved her family, her friends, her community, and she had a tremendous Faith in God. She put her heart and soul into everything she did, 120%, she will be missed by many.

In celebration of Jean Espy Everett's (Nene) life a memorial service was held at the Fort Davis High School Ten-

nis Courts at 10am on Tuesday November 1st. Graveside followed at Hillcrest Cemetery. Lunch was served at Fort Davis Baptist Church for those who wanted to visit with the family. While flowers are appreciated, memorials can be made in her honor to the Fort Davis FFA, Jeff Davis County 4-H Club or the FDISD Tennis program.

Remembrances and condolences may be shared with the family at: Mobile Mortician of Texas web page at www.mmofstexas.com or our facebook page.

SENIOR SPOTLIGHT
Azra Gunes

In what activities did you participate in high school?

During high school I participated in Marching and Concert Band, Academic UIL, FTC and FRC robotics competitions, and National Honor Society.

Who was your favorite teacher/coach, and why?

All my teachers had a profound impact on me, but I am especially thankful to Mr. Saunders, Mr. Crenshaw, and Coach Valenzuela for challenging me with something new every day and preparing me for my life after high school.

What was your favorite moment the last four years?

My favorite moment of high school was the Regional Academic UIL Competition in Abilene last year. It allowed me to spend



Azra Gunes

time doing what I love, and I am grateful to be a part of such a group of like-minded people.

What are your plans after high school?

After high school I plan to pursue my Bachelor's in computer engineering, and then continue towards my master's and doctorate in the same field. I would like to work as a senior computer engineer in a high-profile company as I get more experience.

The Senior Spotlight is graciously sponsored by

PORTER'S THRIFTWAY
We are very proud to support today's Youth!
Services Provided: Wire Transfers • Money Orders • Phone Cards • ATM
Member Store at Participating Stores

Dan Platt, Jr.
Home Auto Commercial
LIVINGSTON INSURANCE AGENCY
Serving West Texas
903 W. San Antonio • Marfa
432.729.4306 • 281.785.5847
Dan@marfainsurance.com | marfainsurance.com

WEST TEXAS EYECARE
Dr. Hulon Pass - Optometrist
Dr. Joshua Pass - Optometrist
Dr. Brian Cherry - Optometrist
605 N. Main P.O. Box 1568
Ft. Stockton, TX 79735
432-336-3662 • 432-336-6711
Mon - Fri 8:30 am-5:30 pm

Holiday Inn Express
2004 East Highway 90 | Alpine, Tx.
432-837-9597
www.holidayinnexpress.com

GRACE Christian Fellowship
Live streaming Sunday 10 a.m. • Wednesday 6:30 p.m.
801 East Brown graceinalpine@gmail.com
Pastors Mark & Shirley Williams • 432-837-9117
Facebook.com/gcfalpine

ALPINE SMALL ANIMAL AND LARGE ANIMAL SERVICES
Mary Dodson, D.V.M. | Zach Dodson, D.V.M.
3201 N. Hwy. 118, Box 7 • Alpine TX 79830
432-837-5416

BIG BEND BIBLE FELLOWSHIP
Sunday Evenings 6:00-7:00 PM
Moss Creek Chapel 46043 State Hwy 118 Alpine, Texas
Phone: 432-244-8859

BAM Automotive
1200 Hwy 118 South • Alpine, TX 79830
432-837-0890 • Fax 432-837-0826
M-F 8am-5pm Closed for Lunch
Closing at noon on Fridays
Full Service Automotive Repair
Exhaust Installation
Lube & Oil Changes • Welding Repair

PhyTex
Rehabilitation & Sports Medicine Associates
Outpatient Physical Therapy
Sports Medicine & Athletic Training Services
1901 W. Highway 90 Alpine, Texas 79830
432-837-5918

ADVERTISE HERE!
Call 432-837-3334

WTG Fuels GASCARD
Your Full Service Propane, Gasoline & Diesel Distributor for Brewster, Jeff Davis & Presidio Counties of West Texas
ALPINE OFFICE: 3001 N. Hwy 118 Alpine Texas • 432-837-2518
MARATHON OFFICE: 300A S. US HWY 385 Marathon, TX • 432-386-4422

FORT DAVIS STATE BANK
YOUR "PEOPLE TO PEOPLE" BANK SINCE 1911
FORT DAVIS (432) 426-3211 • ALPINE (432) 837-1888
PRESIDIO (432) 229-5000

First Baptist Church of Alpine
Bible Study 9:45am
Worship 10:55am & 6pm
office@fbcalpine.com
203 N. 4th St. • Alpine TX 79830 • (432) 837-2487

Devotional Page
There is forgiveness

BY LANA COVINGTON

In his short story, "The Capital of the World," Ernest Hemingway talked about a boy named Paco, a waiter in a restaurant who wanted to be a bullfighter in Madrid, Spain. In Spain, the name "Paco" is quite common, a short name for "Francisco."

Paco had run away from home, and his father had made a desperate search for him. As a final attempt to locate Paco, his father put an ad in the newspaper. It read, "Paco, meet me at the Hotel Montana tomorrow. All is forgiven."

As the father neared the Hotel Montana the next day, he must have been apprehensive about whether his son would be there. Upon arriving at the hotel, he found 800 boys named Paco who were seeking forgiveness from their fathers.

Stories about forgiveness and reconciliation are always heartwarming, probably because we have all been in the position of Paco or Paco's father or both and have experienced giving and receiving forgiveness.

Scripture tells us from the Book of Genesis to the Book of Revelation about God's plan of forgiveness and reconciliation. It is based on mankind's need for forgiveness, and God's desire to give it to His sons and

His daughters.

The psalmist wrote, "If you, O Lord, kept a record of sins, O Lord, who could stand? But with you there is forgiveness." (Psalm 130:3-4a)

Ephesians 1:7-8 tells us that God's forgiveness comes through Jesus Christ. In Him, Jesus, we have redemption through His blood, the forgiveness of sins, in accordance with the riches of God's grace that he lavished on us with all wisdom and understanding.

Through scripture, God makes a plea very much like that of Paco's father. In the newspaper it might read, "My child, meet Me at the foot of the cross. All is forgiven."

We find at the foot of the cross a place of horror, ugliness, disgrace, defeat, and death. As we look up, we see the pierced body and the flowing blood of a dying man, the marks of a new covenant between God and mankind. But this is no ordinary man. He is the very Son of God, who hangs on the cross not because of the nails, but because of His love for us.

We need not bring money or any possession. We need not bring our pride and our accomplishments. We need to bring only our desire to be reconciled to our Father. He provides mercy and grace for everyone who will come to meet Him at the foot of the cross, for it is there that we find forgiveness.

This Devotional and Directory are sponsored by these businesses who encourage us to attend worship services.

ANGLICAN
ANGLICAN CHURCH IN N. AMERICA
HOLY CROSS ANGLICAN
903 Fighting Buck Ave., 837-7170
www.holycrossalpine.org
Rev. Wyatt Boutwell

APOSTOLIC
CALVARY APOSTOLIC
South Hwy. 118, 837-1720
Javier Trevino, Minister

ASSEMBLY OF GOD
1802 Fort Davis Hwy., 837-2264
Pastor Clark Nussbaum

FIRST HISPANIC ASSEMBLY OF GOD
South 11th & Avenue I
Pastor Andrew Posadas

BAHA'I
BAHA'I FAITH
1202 N. 5th St., 432-538-7002

FIRST BAPTIST
4th & Sul Ross, 837-2487

HILLSIDE BAPTIST
East Hwy. 90, 837-5205
Pastor Brad McGuire

BIG BEND CHURCH
Hwy 118 @ Bee Mountain, Terlingua
55 @ 10:00
Worship @ 11:00
(432) 371-2243

CATHOLIC
OUR LADY OF PEACE
5th Street & Gallego Ave., 837-3304
Fr. Pablo Matta, Fr. Victorino Loresca,
Fr. Alfonso Coronado Sanchez

ST. MARY'S CATHOLIC CHURCH
211 W. San Antonio, Marfa
(432) 729-4694
Fr. Pablo Matta, Fr. Victorino Loresca,
Deacon Alfonso Coronado

CHURCH OF CHRIST
CHURCH OF CHRIST
2nd & Sul Ross Ave., 830-515-0591
10:45 a.m. Sundays
Wednesday Evening Service 5:15 p.m.
Curtis Wubbena, Minister
AlpinechurchTX.org

MARFA CHURCH OF CHRIST
North Austin Street
Marfa, TX 79843
Sunday 10:30 a.m.
MarfaChurchofChrist@gmail.com

DISCIPLES OF CHRIST
FIRST CHRISTIAN DISCIPLES OF CHRIST
6th & Sul Ross Ave., 837-2275
Pastor Lana Covington

EPISCOPAL
ST. JAMES' EPISCOPAL, ALPINE
Ave A & N. 6th St., (432) 837-4133
Santa Inez, Terlingua; Chapel of St. Mary
& St. Joseph, Lajitas
www.bigbendepiscopalmission.org

JEHOVAH'S WITNESS
JEHOVAH'S WITNESS KINGDOM HALL
1508 N. 5th St., 837-5115

LUTHERAN
REDEEMER LUTHERAN
15th & Holland, 837-5428
Pastor Mike Fickenschler

METHODIST
FIRST UNITED METHODIST
208 E. Sul Ross Ave., 837-2286, 2280
Pastor Stephen White

MORMON
CHURCH OF JESUS CHRIST
OF LATTER-DAY SAINTS
Sunny Glen Road, 837-3779

ORTHODOX CHRISTIAN
ST. JONAH ORTHODOX CHURCH
405 E. Gallego
Services: 6pm Saturday
10am Sunday
bbsgary@yahoo.com

PRESBYTERIAN
FIRST PRESBYTERIAN
5th Street & Lockhart Ave., 837-2449
Pastor Rev. Bill Cotman

UNITARIAN UNIVERSALIST
UNITARIAN UNIVERSALIST OF THE BIG BEND
1308 N. 5th St
<http://bigbenduu.org>

OTHER
BIG BEND COWBOY CHURCH
E. U.S. Highway 90, 254-631-8582, 432-364-2822
Wendel Elliott, Pastor
bigbendcowboychurch.com

GRACE CHRISTIAN FELLOWSHIP
801 E. Brown, 386-6203
Mark & Shirley Williams, ministers
www.facebook.com/gcfalpine/

ST. LUKE'S MINISTERIAL EPISCOPAL
Welcomes you.
Holy Communion 11 am Sunday
1102 North 5th Street, Alpine, 837-1653
Father Henry - Pastor

ZEN MEDITATION
Morning Glory Sangha
Rev. Jean O'Cuilinn, Minister, 364-2462
Laura Belkin, 729-3063
6 p.m. Monday Nights
Unitarian Universalist Church 1308 N.5th St.

Hampton Inn
2607 West US Hwy. 90 • Alpine, Texas
432-837-7344

True Value MORRISON HARDWARE
SERVING ALPINE & THE BIG BEND SINCE 1928
301 N. 5th St
432-837-2061
ALPINE, TEXAS 79830
www.morrisonhardware.com

Melissa Gonzales
Restaurant General Manager
Pizza Hut
2301 E. Hwy. 90
Alpine, TX 79830
432-837-5819
7 DAYS A WEEK STARTING AT 11AM

PORTER'S THRIFTWAY
Services Provided:
• Wire Transfers • Money Orders
• Phone Cards • ATM
Member Store at Participating Stores

SKINNER'S LLC
DRILLING & WELL SERVICE
Water Well Drilling & Complete Well Service
432-837-2497
Serving you since 1978!
Walter Skinner Master License 2838 AI

SONIC America's Drive-In
Sonic Fountain Drinks
32oz. Drinks 99c
7-10am Mon.-Sun.
1/2 Price Happy Hour!
2-4 pm Every
602 Holland Ave. E
Alpine, Texas 79830
432-837-5521

KC's QuickMart & RV Park
• 30/50 Amp Full Thrus
• Tent Sites
• Restrooms, Laundry
• Walking Distance to:
• Pizza Hut
• Penny's Diner
• All Aboard America Bus Stop
2303 E. Hwy 90 - Alpine
432-837-5497

I can do all things through Christ which strengthen me.
~ Philippians 4:13

First United Methodist Church
208 East Sul Ross Avenue
Alpine, TX 79830-4722
(432) 837-2286

Holy Cross Anglican Church
Holy Communion Sunday 10:30am
Wed. Evening 6:00pm
Wed. Evening Bible Study 6:30pm
Pastor Wyatt Boutwell

Send updates to:
editor@alpineavalanche.com

Avalanche Classifieds

ERRORS - Please check your ad the first day of publication. We are only responsible for the first incorrect insertion of any ad. Publisher's liability for damages resulting from errors in any advertising that it has agreed to publish shall be limited to the amount actually received by the publisher in consideration for its agreement to publish the advertisement in ques-

ALL MAJOR CREDIT CARDS ACCEPTED



PAYMENTS: MUST BE MADE IN ADVANCE • CASH • CHECK • CREDIT

\$10
FOR 20 WORDS
30¢ FOR EACH ADDITIONAL WORD

HOURS - You may place your ad in person at 118 N. 5th St., Alpine, TX 79831 from 8 a.m. to 5 p.m.

may be cancelled for the next publication until 12:00 (noon) on the Monday before publication.

ACCEPTANCE - The publisher wants to do everything that is possible within the confines of good taste and legal constraints to help you advertise your product or service to the best advantage. We reserve the right to edit or reject any copy or insertion

that does not meet our standards of acceptance. The Alpine Avalanche does not run ads for anyone whose balance on previous ads is not current.

PAYMENT - All Classified Ads must be paid in advance.

EMAIL - Send your Classified Ads to the Alpine Avalanche by email at bookkeeping@alpineavalanche.com.

tion. It shall not be responsible for any consequential damages suffered by any party.

DEADLINES - All ads are due in the office by 12:00 (noon) on Tuesday.

Call 432-837-3334.
CANCELLATIONS - All ads

REAL ESTATE

604 n. 6TH St. East, Marathon. 1/2 a city block in Marathon. Call 325-668-1390

MOBILE HOMES FOR RENT

Small mobile home, 3 bedroom 1 1/2 bath. No pets. \$700/ month with deposit. 432-249-0569

Mobile homes and spaces. Close to Sul Ross University. Frontier Mobile Home Village. 1102 N. 9th St. trailer #35 Alpine. Call 432-837-2736

Mobile HOME - 2bed, 1bath, new floors, updated kitchen, bathroom has W/D hookup. No Smoking. Pets considered (non-refundable deposit), Water/trash service provided \$822/month-to-month lease, plus gas & electric. \$822/Deposit. App & Credit Check required. Call or TEXT 979.997.0040

FOR RENT/LEASE

FORT DAVIS HOUSE FOR RENT, \$1600 per month. 432-249-0030

Rentals Available. Call Rhonda Cole 432-837-5539

102 Baeza Circle Hse#2 - Fort Davis, 2 BR/1 Bath, rent \$1,000.00/mo + deposit 432-249-0293

Information concerning available rentals at clarknussbaumrealty.com

106 N. Garnet - 2-bedroom for rent. 432-294-2765 or 432-837-3503

407 E Lockhart #5 Studio Apartment for Rent Rent \$595.00/mo + Deposit 432-249-0293

101 Baeza Circle - Ft Davis, 2BR/1 Bath, Rent \$895.00 / mo + Deposit, 432-249-0293

Small house for rent.

FOR RENT/LEASE

432-386-0363

407 E Lockhart #7 - 1 BR / 1 Bath Rent \$795.00 / mo + Deposit 432-249-0293

Casita - one bedroom, central Alpine; furnished, fireplace, private garden, covered parking, laundry. Bills paid except electric. No smoking, pets. \$950 monthly plus deposit of \$600. 6 mo. lease minimum. Available now. Contact bigbend woman@gmail.

HELP WANTED

EASY MONEY AT ELM GROVE- Need clean up every other week at Elm Grove for one grave site. Pay \$40 per hour. Job no longer than one hour per visit. Must send photo each time job completed via cell phone. You are paid same day job done. All you need is a rake and a car. Call 800-

HELP WANTED

955-9942 to apply.

Hampton Inn is seeking dedicated employees to fill night audit. Excellent pay and benefits. Please apply in person at 2607 West Highway 90.

Holiday Inn Express is seeking dedicated employees to fill front desk, night audit, and house-keeping positions. Please apply in person at 2004 East Highway 90.

WANT TO BUY

I buy cast iron skill-lets please text or call 512-963-7533

Want to buy old Colt pistols and old Winchester Lever Action rifles. Daytime phone #: 432-294-2094. Nights/weekends: 432-364-2234

Looking for house-keeper, weekly for

HOUSEKEEPER

large three-bedroom home in Alpine. Duties includes general cleaning, beds, fans, baseboards, bathrooms, appliances and more. Please call 512-963-7533. references necessary.

GARAGE SALE

Marfa Estate Sale - Nov. 5th 8am - 4pm & Nov. 6th 8am - 2pm **HALF OFF SUNDAY!!!** 616 W 2nd St. Marfa, TX Corner or 2nd / Plateau **CASH ONLY** Sofas, Occasional Chairs, Antique / Vintage Radio & Speakers, Pair Swivel Chairs, Dining Tables and Chairs, Gaming Lot of Christmas Décor, Books, Local Original Art, Art Prints, Vintage Apparel, Linens, Gun Case, Utilitarian, Kitchen, Washer / Dryer (New), Tools, Electronics, Landscaping Equipment, & Much More! 512-351-1429 Mark

GARAGE SALE

YARD SALE - Lots of Stuff! Come and see! Saturday - November 5th, 10:00 - ?? 410 S. Berkley

YARD SALE - Friday, Nov. 4th and Saturday, Nov. 5th, 9:00-2:00. 203 S. Cockrell - Alpine, weather permitting.

GARAGE SALE

4 family garage sale - Friday and Saturday, 8-5, 1904 N. 7th St. Alpine. Clothes, baby items, appliances and tools.

201 Halbert St.- Alpine, Saturday 8:30-noon. Commercial fryer, French Doors and lots of misc.



PORTER'S
SINCE 1945

This is our story

Now hiring multiple positions within both Alpine and Fort Davis Locations. Flexible Hours and School Schedule. Please apply at any of our locations in person.

ALPINE, TEXAS
101 E. SUL ROSS AVENUE
104 N. 2ND STREET
(432) 837-1182

EOE.

TWIN PEAKS
is hiring a Fulltime assistant manager trainee starting at **\$12.50 an hour.**

After completing a minimum of 90 days training and successfully meeting a series of benchmarks, a promotion to Assistant Manager and a raise to \$15.50 will be given.

Please apply in person.



TWIN PEAKS LIQUORS

605 E. Holland in Alpine, Texas



Follow us on Facebook

WEST TEXAS ROUNDUP

MOVING



FRANK'S MOBILE HOME MOVERS

432-553-4628
FORT DAVIS, TEXAS 79734
FRANK A. GAUBLE

REAL ESTATE



CARPENTER REAL ESTATE
Established 1947 • Alpine, Tx

REAL ESTATE | LAND | RANCH | HOME | INVESTMENT
www.legacybrokergroup.com | 432-837-3325

SEPTIC SERVICES

DO NOT WAIT until your septic system shows signs of failure to have your septic tank pumped out!

Waiting can mean complete clogging and an expensive septic system repair bill. Periodic septic tank pumping is far less costly than septic tank repair or replacing the entire septic tank system.

We recommend septic system cleaning every 2-5 years.

Remember: Maintenance is much cheaper than replacement!



B & S SERVICES SEPTIC PUMPING & SERVICE


(432) 294-0758

B & S SERVICES is the BEST in Portable Sanitation

We have Special event rentals, monthly construction rentals, handicapped rentals and wash stations. We also service holding tanks.

bstoilets@hotmail.com

PROPANE



WTG FUELS, INC. GAS CARD

WTG Fuels, Inc.

GAS | DIESEL | PROPANE

ALPINE | 432.837.2518 | MARATHON 432-386-4422

SPA



Beauty Bar

432-837-4101 | Cell: 432-294-0351
201 E. Holland | Alpine

Angie Portillo
HAIR STYLIST

WELL SERVICE

SKINNER'S DRILLING & WELL SERVICE, LLC

Serving You Since 1978

WALTER SKINNER
TDLR Master Lic. #2838 AI **432-837-2497**

John Skinner
Lic. #59655 KLPW **Thomas Skinner**
Lic. #59401 LPW

2300 W. Mosley Loop, Alpine, TX
www.skinnerdrillingbigbend.com

REAL ESTATE

Barbara Trammell, Broker Listings Wanted
432-371-2430 - P.O. Box 356 Terlingua, TX 79852

BIG BEND REALTY

TERLINGUA RANCH * TERLINGUA GHOSTOWN
STUDY BUTTE * SOUTH COUNTY AREA
UNDEVELOPED RECREATIONAL * HOMESITE
RESIDENTIAL * COMMERCIAL

FOR ALL YOUR NEEDS - LET'S TALK!

TIRE DISPOSAL



Tire Disposal

Legally dispose of scrap tires!

(TCEQ Permitted facility).
Fees: \$8/semi tire and \$6/auto, pickup, and trailer tires when delivered to West Odessa, TX.
No super singles, agriculture or machinery tires.
Add \$4/tire extra for pick-up service in Ft. Stockton. & \$6/tire extra for pick-up service in Marathon & Alpine.
(50 tire minimum for pick-up service)
Open daily during daylight hours. Cash, cards, checks okay.

Call **432-614-1865** for more information.



FindARanch
OUT WEST

Specializing in Ranch & Rural Properties in the Big Bend & Highlands of West Texas

(888)729-4424 • (432)249-0401
P.O. Box 726, Marfa, TX 79843
Cleat L. Stephens, Broker
cleat@findaranch.com
FindARanchOutWest.com

TREATING YOURSELF TO NEW CLIENTS?
WE HAVE YOU COVERED!



the ALPINE AVALANCHE
Serving the Big Bend and Davis Mountains Country since 1951

GIVE US A CALL TODAY & RESERVE YOUR SPACE!

432-837-3334



AVAILABLE POSITIONS



Technology Service Associate (Terlingua)

Are you looking for a career as a Service Technician who wants to provide Big Bend Telephone's exceptional customer service all while living and working in the beautiful Terlingua/Lajitas area. Then BBT is the place for you to grow and develop with the ever-changing communications industry and is committed to providing stellar customer service and first-rate technology. The entire Big Bend team plays a role in developing strategies to increase the sales and usage of our products, services and equipment while reinforcing our brand. The ideal candidate will be technically inclined, have a strong desire to succeed and capable of delivering world-class customer service. The job entails networking comprehension, installation and troubleshooting of fixed wireless, fiber to the home, Wi-Fi services, IP Phones, and other customer premise services as well as copper loop installation, repair and troubleshooting. Position requirements are Minimum High School Diploma or GED equivalent with 2 years of experience in a related field. Applicants must possess a valid driver license, have a good driving record and be insurable under the company's insurance policy. There is a \$1,000 signing bonus for new hires (terms and conditions apply) and long-term career potential for the right motivated person.

For more information we invite you to visit <https://www.bigbend.com/about-us/employment/>

Email resume to: HR@bigbend.com
OR Mail a current resume to
BBT, Attn: HR
808 N. 5th St.
Alpine, TX 79830
Please no phone calls.
EEO Employer
Veterans are encouraged to apply
**Terms and Conditions apply.*
BBT participates in E-Verify and promotes a Drug-Free Workplace.

NOTICE

APPLICATION HAS BEEN MADE WITH THE TEXAS ALCOHOLIC BEVERAGE COMMISSION FOR A WINE AND MALT BEVERAGE RETAIL DEALER'S ON-PREMISE PERMIT BY SANDSTONE ALPINE, LLC DBA ANTELOPE LODGE LOCATED AT 2310 W HIGHWAY 90, ALPINE, BREWSTER COUNTY, TEXAS. JAYSON SEIDMAN, MANAGER.

Action Heating and Cooling is hiring.

Starting wage is \$18 to \$20 based on experience. Will train. Service techs earn hours with the state to become licensed. Great work hours with overtime available (if wanted). Great opportunity for the newly high school graduate.

Call **432-386-0275**

The Brewster County Central Appraisal District is accepting applications for the entry level position of **Property Tax Appraiser.**

Responsibilities include office and fieldwork associated with the appraisal of residential, commercial, rural, and personal property, analysis of market sales, and application of mass appraisal techniques. A valid Texas driver's license and excellent driving record are required. This position will require registration with the Texas Department of Licensing and Regulation and schooling (5-years) to obtain the required RPA designation. Applicants must have excellent organizational skills, computer skills, mathematical skills, and effective communication and people skills. A pleasant, positive personality and good work ethic are necessary. Applicants must have a high school diploma or equivalent and knowledge of the Texas property tax system is a plus.

Benefits include health insurance, retirement plan, paid vacation, and sick leave. Salary is contingent upon education, experience, and qualifications.

Interested applicants may apply at 107 West Avenue E between the hours of 9:00 a.m. to 12:00 p.m. and 1:00 p.m. to 5:00 p.m., Monday through Friday. No phone calls please. All applications must be received by Friday, October 28, 2022 to be considered.

(Brewster County Central Appraisal District is an Equal Opportunity Employer.)

PLACE YOUR AD ONLINE



Click on the Classifieds tab at www.alpineavalanche.com

THEN CLICK

+ Place your ad



Brewster County Road & Bridge Job Opening

The Brewster County Road & Bridge Department is seeking a qualified worker to perform duties under the direction of the Superintendent of the Department. The Brewster County Road & Bridge Worker is an employee of Brewster County. Therefore, the employee must understand and abide by the Brewster County Employee Handbook. The duties include, but are not limited to: operating equipment such as loaders, mowers, dirt compactors, maintainers, and dump trucks. Applicants must have a CDL for hire. Applicants will go through a 90 day probationary period, and must be able to pass a background check and a drug test. Applicants must also demonstrate good people skills, must be able to follow directions and orders, and be a flexible team player. In addition to salary commensurate with experience, Brewster County employee benefits will also be a part of the package. For application, visit: www.brewstercountytx.com. Please complete an application, resume and references and send to: Brewster County Road & Bridge Superintendent, 2601 N Hwy. 118, Alpine, TX 79830 or you may leave it with the County Judge's Office at 201 W Ave. E Alpine, TX 79830 For questions, contact Frenchie Causey at 432-837-2714 or 432-294-0398.




Greenhouse Grown

EMPLOYMENT OPPORTUNITIES

Village Farms is seeking a detailed oriented individual to join our team as Shipping/Receiving Clerk for our Marfa 2 location.

Responsibilities include loading and unloading, forklift operation, preparation of shipping documents, verify deliveries, maintain warehouse and other general duties. Requirements: Must be willing to work flexible hours including evenings, weekends and holidays, ability to work independently, verbal and written communication skills, working knowledge of computers and forklift experience preferred. Must be able to pass a pre-employment drug screen.

Interested candidates can call **(432)729-3071 Ext. 607** for more information. Resumes should be emailed to ebaeza@villagefarms.com or faxed to **(432)375-6241**, applications are also available at Village Farms Security Stations 3 Miles N. Hwy 17 Marfa, TX or 3 Miles S. Hwy 17 FT. Davis, TX.

Now Hiring

- **FULL TIME IT**
SPECIFIC SOFTWARE, PREFER MEDICAL SOFTWARE EXPERIENCE
 - **MEDICAL DOCTOR**
 - **FAMILY NURSE PRACTITIONER**
 - **FULL TIME- NURSE SUPERVISOR**
 - **DENTIST**
Must be licensed in the State of Texas, Alpine Location
 - **PART TIME - DENTAL HYGIENIST,**
Alpine Location
 - **PROGRAM COORDINATOR -**
Collaborate with team to ensure program process and outcomes.
 - **HUMAN RESOURCE REP.**
(Bachelors required)
 - **STAFF ACCOUNTANT**
Alpine Location
 - **FULL TIME MEDICAL FRONT DESK RECEPTIONIST**
 - **FULL TIME DENTAL FRONT DESK RECEPTIONIST**
- Applications maybe picked up at **1605 N. Ft. Davis Hwy.**
 Please call us before arrival **432-837-4812**

LOOKING
for Full time or part time work?



WE CAN HELP!

We are currently looking to hire **MORNING SHIFTS.**

6am-2pm or 8am-5pm

We can accommodate any schedule you have

- Starting pay - \$10/ per hour
- Closing pays 10% more per hour
- 5% weekend differential
- Benefits- Health and 401K
- Overtime Available
- Paid Vacation
- College Assistance
- Flexible schedule
- Uniform provided
- Discounts on meals

- MAINTENANCE (CUSTODIAN) CREW**
- Basic duties:
 - Will keep lobby, back storage, washing machine/mop sink area and kitchen areas clean and neat.
 - Collect trash from lobby, kitchen and outdoor containers and dispose of same in dumpster. Keep area around trash and cardboard dumpsters as clean as possible.
 - Wash towels and prepare towel bucket for use in front counter.
 - Check and clean bathrooms on a regular (hourly) basis.
 - Break up and compact cardboard as needed and put in outside blue cardboard dumpster
 - Correct any hazardous or unsafe condition observed or notify on-duty manager of the problem
 - Assist with truck deliveries as needed. Check freezer and walk-in refrigerator for temperature check, neatness and cleanliness.
 - Starting pay is \$13.00 Per hour



TRANSPECOS BANKS


TransPecos Banks continues to grow and needs additional hard working, dedicated employees to fill the following positions. All positions require a high school diploma or GED. Credit and background checks will be performed.

UNIVERSAL TELLERS - We are hiring part time tellers for our Alpine and Marathon locations. Must be customer friendly, and able to work quickly and accurately with numbers. Experience a plus.

Compensation based on related experience.


Please apply at www.tranpecosbanks.com
 Equal Opportunity Employer.
 Member FDIC.

TransPecos Banks,
 P. O. Box 9600, Alpine, Texas
 432-837-0094



PREVENTATIVE CARE HEALTH SERVICES

For info, please call **432-837-4812**
 Applications can be picked up at **our locations or online at: pchsmedclinic.org**



i'm lovin' it

Text "mcdworksforme" to 36453
Mcdonalds.com/careers
 900 E. Avenue E Alpine Texas



Locals sample queso entries at the Dia de los Quesos held at the Hotel Ritchey this weekend.
Avalanche photo by JT Maroney



Visitors take a look at information on the Alpine Humane Society at the Dia de los Quesos event this weekend.
Avalanche photo by JT Maroney



Keller, Layne, and Lindley Lutz dressed up for the border patrol's trunk or treat.
Avalanche photo by Kara Gerbert



Springfield's is the spookiest place in Marathon.

Photo courtesy of Kelly Springfield



Norah Shoot models her face art at the pumpkin patch.

Avalanche photo by Kara Gerbert



Mackenzie Lewis and Georgia Muratori garnered first prize in the Annual Harvest Festival parade held in Alpine.

Photo by Taj Muratori



Local border patrol families enjoy their own 'trunk or treat' at Kokernot Park.

Avalanche photo by Kara Gerbert

VOTE Republican

The Brewster County Republican Party

Early voting for the 2022 General Election is underway with National Election Day being Tuesday November 8 from 7 a.m. to 7 p.m.

Early voting in Brewster County is held at the Val Clark Beard Building across the street from the County Clerk's office on 7th Street from 8 a.m. to 6 p.m. Thursday and Friday November 3rd and 4th. Remote Early voting will be available on November 3 for precincts 3, 5, 6 and 7.

Check your voter registration card for your registered voting precinct.

If you are concerned with:

- Increasing inflation and loss of spending power
- The invasion of the Southern Border of the United States
- Maintaining your second Amendment Right to Bear Arms
- Parents rights regarding the role of education for their children
- Enforcement of the Rule of Law
- The loss of free speech
- Support for your law enforcement forces

Make your vote count and vote for your *Republican Candidates* from the top of the ballot to the bottom!

Election Day voting locations:

- Precinct 1 – Fellowship Hall, Alpine Assembly of God Church, 1802 N Hwy 118, Alpine
- Precinct 2 – Val Clark Beard Building – 203 N. 7th, Alpine
- Precinct 3 – Marathon Community Center
- Precinct 4 – Alpine Civic Center
- Precinct 5 – Panther Junction Visitors Center, BBNP
- Precinct 6 & 7 – Red Pattillo Community Center, Study Butte
- Precinct 8 – Food Pantry of Alpine, 933 E Gallego

★ USE YOUR VOICE! ★ MAKE THE RIGHT CHOICES! ★

Political ad paid for by Brewster County Republicans



McRib® FAREWELL TOUR

McDonald's
I'm lovin' it

**900 E. AVENUE E
ALPINE TEXAS**

The McRib® is Back to Say Bye

Savor every tangy bite like it's your last because it just might be. This is the McRib Farewell Tour, so order yours before it's gone, in the app for pickup by 11/20/22.*

Order in the App

*At participating McDonald's. App download and registration required.

Million Dollar Pound Cake

Baking is not something I do regularly, and while I enjoy something sweet and satisfying just like the next person, I rarely break out the flour and measuring cups to create sweet treats to grace my table. Although I enjoy a decadent dessert, my tastes run quite simple. A simple chocolate cake, a light and spongy angel food cake, or a dense and buttery pound cake are simply my favorites. And then comes this recipe to turn everything upside down, and make anyone's taste-buds feel as if they have

HEAD OVER MEALS
by kara gerbert



Courtesy Photo

won the flavor lottery.

When you are searching for a way to make your friends and family feel like a million bucks, look no further than this Million Dollar Pound

Cake recipe. This elevated take on an old favorite will leave your friends and loved ones with a million-dollar smile for the remainder of the day.

Traditional pound cakes are buttery and dense, and overall quite simple but refreshingly delicious. This pound cake recipe however is true to

its name.

This recipe adds in crunchy toffee bits and velvety pecans as well as a drizzle of creamy caramel sauce to send your taste buds into heaven. For simplistic decadence,

this pound cake just can't be beat. So, the next time you want to wow your friends and family with your baking skills, look to this recipe, and serve them up a million dollars' worth of sweetness.

Million Dollar Pound Cake

- Ingredients:**
- 1-1/2 cups unsalted butter, softened
 - 2 cups light brown sugar, packed
 - 1 cup granulated sugar
 - 5 large eggs, at room temperature
 - 3 cups all-purpose flour
 - 1 teaspoon baking powder
 - 1/2 teaspoon salt
 - 1 cup whole milk, at room temperature
 - 1 (8-ounce) bag toffee bits
 - 1 cup pecans, chopped
 - 2-1/2 cups caramel sauce

- Directions:**
- Preheat the oven to 325 degrees F. Generously spray all surfaces of a nonstick, 12-cup bundt pan with non-stick cooking spray, and flour or grease and flour the inside. Set aside.
- In a large bowl, beat the butter until creamy. Add the brown sugar and the granulated sugar to the butter, beating until fluffy, no less than three minutes.
- Add the eggs, one at a time, to the sugar mixture, beating until just the yellow disappears after each egg.
- In a medium bowl, combine the flour, the baking powder, and the salt. Gradually add the flour mixture to the butter mixture in thirds, alternating with the milk in between each third. Beat the batter until just combined.
- Stir the toffee bits and the pecans into the batter.
- Spoon the batter into the prepared pan. Bake until a fork inserted near the center of the cake comes out clean, about 75-90 minutes. You may need to cover the top of the cake with foil near the end of cooking time to prevent excess browning.
- Let the cake cool in the pan for 15 minutes. Transfer the cake from the pan and let cool completely on a wire rack. Spoon the caramel sauce over cake. Serve.

Easy Caramel Sauce

- Ingredients**
- 1 cup packed brown sugar
 - 1/2 cup half and half
 - 4 tablespoons of butter
 - Pinch of salt
 - 1 tablespoon vanilla

Directions

Mix the brown sugar, half-and-half, butter, and salt in a saucepan over medium-low heat. Cook while whisking gently for five to seven minutes until it gets thicker. Add the vanilla, and cook another minute to thicken further. Turn off the heat, cool slightly, and pour the sauce into a jar. Refrigerate until cold.

Advertising really works!
Call for details!

432.837 3334

or visit us online at

www.alpineavalanche.com

Morrison Family of Stores

True Value ANNIVERSARY SALE

Tire Inflator +
\$28.99
208714

George Foreman Grill
\$20.99
100459

Aluminum Turkey Fryer
\$80.00
233074

Stoneware Coasters,
\$5.00
235556

42IN CEILING FAN W/LIGHT KIT
\$50
9263211

52IN CEILING FAN HUGGER W/LIGHT KIT
\$75
9483074

OUTDOOR EDGE RAZOR LITE BLUE KNIFE
963420

OUTDOOR EDGE RAZOR LITE GRAY KNIFE
963476

OUTDOOR EDGE RAZOR LITE ORANGE KNIFE
963782

Electronic Leak Detector
\$15.00
795039

Ratcheting PVC Cutter,
\$17.99
210753

128OZ GERMICIDAL BLEACH
\$2.99
269013

ONE DAY ONLY!!! SATURDAY NOVEMBER 5, 2022

BUY ONE, GET ONE FREE

GALLON OF EASYCARE ULTRA PREMIUM PAINTS OR EASYCARE WOODSMAN EXTERIOR STAINS
EXCLUDES EASYCARE 365. LIMIT FIVE 1-GALLON OR ONE 5-GALLON PAIL PER HOUSEHOLD. CONSUMER IS RESPONSIBLE FOR ALL TAXES CERTAIN EXCLUSIONS APPLY. SEE STORE FOR DETAILS. EASYCARE WOODSMAN EXTERIOR STAINS NO AVAILABLE IN ALL STATES DEPENDING ON LOCAL LAWS AND ORDINANCES. OFFER VALID AT PARTICIPATION TRUE VALUE STORES. ONE DAY ONLY SATURDAY - NOVEMBER 5, 2022

FREE PUNCH & CAKE

ONE DAY ONLY!! SATURDAY NOVEMBER 5, 2022

Morrison True Value ANNIVERSARY BAG SALE

25% OFF

all regularly priced items you can fit in your True Value® Bag.*

*See store for details and restrictions. Excludes Weber® products, power tools, guns and ammo. Limit 1 bag per customer per visit. ©2022 True Value Company LLC.

301 NORTH 5TH STREET - ALPINE TEXAS - 432-837-2061 - www.morrisonhardware.com