

Holly Olds and Marci Roberts take a look at the high-tech instruments used at the Marathon Health Center.

Avalanche photo by Roxanne Hill

New health clinic opens in Marathon

BY ROXANNE HILL
 Staff Writer

Accessing high quality health care in a sparsely populated area like the Big Bend has become a focal point for many residents who often have difficulty seeing a doctor in a timely manner.

Marathon will now debut a new health clinic to bridge that gap thanks to a partnership between Marathon resident Marci Roberts, the Marathon Foundation Board, and Texas Tech Health Science Center, a leading partner in the field of telemedicine.

See CLINIC • 6

INSIDE



FEATURED

See sports on page 8.

Rainfall totals at Alpine-Casparis Airport

2022 13.74"
 October 1.76"



Burn Ban OFF

INDEX 16 pages

Opinions P.4
 Sports P.8-9
 Classifieds P.14-15

PLEASE REMEMBER TO THANK A VETERAN, A MEMBER OF THE ARMED FORCES, OR A LAW ENFORCEMENT OFFICER EVERY DAY.



Early voting starts Monday

County judge, state governor are two hot races

BY GAIL DIANE YOVANOVICH
 Managing Editor

Early voting for the Nov. 8 general election starts Monday, and voters will have plenty of opportunities to cast their ballots.

All registered voters in all Brewster County precincts may cast their ballots early at the Val Clark Beard Complex, 203 North Seventh Street in Alpine. On Monday, Oct. 24, and Mon-

day Oct. 31, the polling place will be open from 7 a.m.-7 p.m. On Tuesday, Oct. 25, through Friday, Oct. 28, and Tuesday, Nov. 1, through Friday, Nov. 4, the polling place will be open from 8 a.m.-6 p.m.

Remote early voting for Pct. 3 will be available at Marathon Community Center, Second Avenue and Avenue E in Marathon on Wednesday and Thursday, Nov. 2-3 from 9 a.m.-5 p.m.

Those in Pct. 5 wishing to

cast their ballots early may do so at Big Bend National Park in the Panther Junction Visitor Center on Wednesday and Thursday, Nov. 2-3 from 9 a.m.-5 p.m.

Remote early voting for those in Pcts. 6 and 7 will be available the J.W. "Red" Pattillo Community Center on Highway 118 in Study Butte on Wednesday and Thursday, Nov. 2-3 from 9 a.m.-5 p.m.

On election day, voters must



cast their ballots in the precinct in which they are registered.

Closest to home in contested races, Democrat Oscar Cobos and Republican Greg Henington

See VOTING • 6

Keeping Alpine beautiful



Volunteers and Alpine community members pause for a photo during the Fall Sweep community clean-up event held on Oct. 15 outside Kokernot Lodge. Trash to the tune of 350 pounds were collected during the trash-off thanks to the efforts of volunteers who did their part to keep Alpine beautiful.

Courtesy photo

Sunshine House roping it up for a good cause

BY ROXANNE HILL
 Staff Writer

The Sunshine House senior citizen center in Alpine is gearing up for its biggest fundraiser of the year on Oct. 22. The seventh annual Wild West Night is sure to get plenty of folks boot scootin' for a worthy cause. It will raise funds for its meal programs, both congregate and the Meals on Wheels service that provides to seniors, the homebound, and disabled in Alpine and Marathon. Executive Director Kerie van Zeyst pointed out that the Sunshine House provides over 200 meals a day - around 180 at home, and 30-50 at the dining facility, ensuring that those who need it most receive a hot, nutritious meal.

Many volunteers, especially drivers, are still needed at the Sunshine House, and van Zeyst indicated it was challenging to find drivers who can deliver meals at a time that may conflict with their work or school schedules. Though the center receives some grants, some are restricted, and do not cover everything needed. However, the Sunshine House is in good fi-



Craig Carter and the Spur of the Moment Band entertains patrons at a past Wild West Night fundraiser for the Sunshine House.

Courtesy photo

nancial shape. "We are fortunate to have such a wonderful community and such a caring community," said van Zeyst, who credited the many individual donors from Alpine, along with businesses, that support the Sunshine House.

Van Zeyst invited everyone

to tour the Sunshine House to see the inner workings of a senior center at the heart of the community.

"It's a great opportunity for people to see firsthand what we really do," she said.

At the upcoming Wild West Night fundraiser, van Zeyst

said the popular event is meant to entertain while benefiting a great cause, back up since it was last held in 2019.

"We want people to have fun, and have a really great night out," she exclaimed. "It is our largest fundraiser of the year, and brings in about 20% of income for us. It was lower than normal last year because we were online, but this year we are hoping it will be back up."

As far as challenges, van Zeyst said the lack of a nursing home facility in Alpine makes the services much needed for those seniors who remain in town.

"In Alpine specifically and in the U.S., more and more people are turning 60 than ever before," she said. "With there being no adult daycare, no nursing home, it is very difficult because we have so many seniors. When people are taken out of their homes and put somewhere else, they lose their whole community. That is one reason that we do what we do. We try to keep people in their homes so they don't have to go somewhere else. Getting them the proper nutrition is a big part of that."

Alpine Memorial FUNERAL HOME
 CREMATIONS • PRENEED PLANS
Honor The Memories
 EACH SERVICE, UNIQUE AND PERFECT IN EVERY WAY.
 209 West Sul Ross, Alpine Texas | 432-837-2222
 www.AlpineMemorialFuneralHome.com

MONICA WOODALL
 900 E. HOLLAND AVE. • (NEXT TO BEALLS)
 ALPINE, TX 79830
432-837-5631
 LIKE A GOOD NEIGHBOR STATE FARM IS THERE.
 STATE FARM INSURANCE

Lucy's Christmas Cottage
 106 W. Lockhart Behind True Value
 A year round Christmas store
 featuring unique decorations and home accents

Double K FLOWERS & GIFTS
 DEBORAH PRUITT
 OWNER
 o: (432) 837-2227 409 E. Ave. E • Alpine, TX
 c: (432) 940-9150 deborahpruit50@yahoo.com

TRANSPecos BANKS
Texas Banking at its Best.
 402 W Holland Ave, Alpine, TX 79830
 432-837-0094 | www.transpecosbanks.com
 FDIC

Lobby & Drive-Up Services Available!
 Proudly Serving Our Community
 ALPINE BRANCH | 101 East Avenue E | Alpine, TX 79830 | 432.837.3375
WTNB
 MEMBER FDIC EQUAL HOUSING LENDER
 NMLS 410435 | 877.493.7862 | WTNB.com

VOTE

ZUBELDIA

TEXAS STATE SENATE DISTRICT 29

- **LOWER TAXES**
- **LOWER GAS PRICES**
- **HIGHER PAYING JOBS**
- **BORDER SECURITY**



City Council approves use of water well

BY ROXANNE HILL
Staff Writer

The City of Alpine held its regularly scheduled meeting on Oct. 18, and a proposed contract to re-establish a water well for the city drove the agenda. Council member, Ward 2, Chris Rodriguez, was absent.

Regarding water well use, after hearing discussions from both Dr. Stephen Daugherty, a property owner but non-resident who owns a ranching operation in the city, and his attorney Sam Ballard, the council unanimously approved authorizing contract discussions with Daugherty for long term use of his well.

In June, the city initiated the first phase of its drought contingency plan due to equipment issues in the Sunny Glen well fields. Multiple wells were down due to weather and



Dr. Stephen Daugherty attended Tuesday's city council meeting via Zoom.

Avalanche photo by Roxanne Hill

equipment maintenance. Daugherty contacted the city wishing to assist in either an emergency or long-term capacity.

Ballard provided a history of the wells that have benefited the city since the Daugherty family entered into a lease agreement back in the 1950s, at one point providing half of the city's groundwater. The last agreement was from 1965-2005, but it was not renewed after that.

Ballard added, "Dr. Daugherty plans to dedicate production from his

No. 1 well for the city for public water supply, and then he plans to use other wells for his own irrigation purposes. The Daughertys have always had a good relationship with the city, and he looks forward to maintaining that relationship going forward."

Daugherty added, "We can provide water as soon as the groundwater conservation district allows us to do so, but I really think it's in my vested interest for a long-term deal that allows us financial

stability of the ranch."

Regarding the state of the city's finances, City Manager Megan Antrim presented a budget report for revenues and expenses for August and September, indicating that overall, the projected year-end figures are on target, and the city is on balance. Director of Finance Alicia Salinas, however, did not present a financial report.

City Tourism Director Chris Ruggia presented his quarterly report, saying that the city is expecting over \$725,000 of hotel/motel tax revenue after October collections, which would be the city's second year ever above the \$700,000 mark.

During action items, council voted unanimously in favor of several key items. The first was to approve the second and final reading of an ordinance providing for a renewal fee increase for the reg-

istration of dogs and cats. The second item was to approve the first and final reading of an ordinance amending a typographical error in levying property taxes during the 2022-2023 fiscal year.

"When the Brewster County tax office was about to send all of their tax notices, they realized that our ordinance did not quite add up," said Antrim. "We went through and double checked, and a zero was accidentally left

off from the interest and sinking rate, which should be \$0.035701."

Finally, council unanimously approved the fiscal year 2022-2023 annual tax collection agreement with Brewster County, which includes a 5% increase.

The next regularly scheduled city council meeting is set for Tuesday, Nov. 1, at 5:30 p.m. in the city council chambers and via Zoom video-conference.

YOUR home for Beef!
Flat Iron and Sirloin
25% OFF





801 E. Holland Alpine
432-538-2151

FAR WEST TEXAS CATTLE CO.
From Ranchers who care to Your Table

Cleaning it up

Terlingua students and Terlingua Fire and EMS wash Shelby Mustangs at the group's gathering down South this past weekend.

Courtesy photo

SUNSHINE HOUSE INC.
Sunshine House Senior Citizens Center Meals on Wheels
402 E. Holland Ave. • Alpine, Texas 79830 • 432-837-5402
www.sunshinehousealpine.com

Thank you for the following donations:

Subway Alpine #11740	Norman Wilson
McDonald's	Faith Hegerfeld
Hawkins Construction	Anonymous
McCoy Corporation	Charles and Sue Smith
Chachi Hawkins	Patsy Culver
Gayle Lewis	Katherine Gregory

Catherine Eaves in honor of Paula Wilson

Our Vision: A hunger-free, healthy community.
Our Mission: To provide quality nourishment and social enrichment in the lives of seniors, the homebound and disabled in Alpine, Texas.
Join us for lunch Monday through Friday, 11:30 - 12:30. • Cost is \$6.00 per person.
Sunshine House is an equal opportunity provider and employer.

Community meeting scheduled in Marathon

Marathon residents are invited to a community meeting to learn about the final results of the town's first Historic Resources Survey, which began in October 2021. The meeting will take place on Thursday, Oct. 20, from 6:30-8 p.m. at St. Mary's Catholic Church in Marathon.

Consultant Steph McDougal from McDoux Preservation will present two possible historic districts that could be nominated to the National Register of Historic Places. Printed information will be available in English and Spanish, and refreshments will be served.

McDoux Preservation LLC, a Houston-based historic preservation consult-

ing firm, previously nominated the Gage Hotel to the National Register several years ago. McDougal and her team of architectural historians were subsequently engaged by Gage Hotel owner J. P. Bryan to determine whether any part of Marathon might be eligible for listing on the National Register, or if individual buildings might be eligible. McDougal emphasizes that the National Register is an honorary designation, and does not restrict property owners in any way, but it can make some properties eligible for tax credits and grants.

After gathering data and photographs, McDougal and her team worked with the Texas Historical Commission to evaluate wheth-

er the town contained any potential historic districts. On the north side of Highway 90, the number of vacant lots and new construction limited potential historic district boundaries to a single district encompassing the public square and three churches. However, on the south side of Marathon, the large number of adobe buildings led McDougal and THC to conclude that an adobe-focused historic district might be possible.

In January 2022, McDougal visited Marathon to speak at a Brewster County Commissioners Court meeting at the invitation of County Judge Eleazar Cano. At that meeting, McDougal explained that even if a portion of

Marathon could potentially be nominated to the National Register, that does not mean it would happen. A nomination would have to be approved by the Texas Historical Commission, property owners would be notified by mail, and if more than half of the property owners responded that they were opposed, the district would not be listed on the National Register.

For more information about the historic resources survey and potential historic districts project, visit mcdoux.com/marathon.

NEW SHOW
FT. STOCKTON GUN SHOW

Oct. 29th & 30th
Sat. 9am-5pm; Sun. 10am-4pm
Ft. Stockton Convention Center

\$7 Adults; under 12 Free
Door Prizes

For info call 806.253.1322 or email
info@silverspurtradeshows.com
http://www.silverspurtradeshows.com



All Womens apparel 20% off online, or instore



OUT WEST FEED & SUPPLY
ALPINE, TX

October 20-October 26
www.outwestshopping.com

SUNSHINE HOUSE
WILD WEST NIGHT


Bake-Off Entry Form
Deadline October 20, 2022
\$5 Entry Fee

Ages Groups: (1) Youth 7 - 17 (2) Adult 18 and up
Entry: Pies/Cobblers Cake/Cup Cakes Dessert Bars/Cookies

For Each Category and Age Group
1st Place \$50
One Overall Grand Prize \$100

Date: October 22, 2022 Place: 402 E. Holland Ave, Sunshine House
Time: Drop-of desserts by **3:00 P.M.**
Judging: Starts at 3:30 P.M. - Winners will be announced that evening.
Turn in entry form by October 20, 2022

Dessert Name and type: _____
Name: _____
Address: _____
City, State, Zip: _____
Telephone #: Home: _____ Cell: _____
Email address: _____



Opinions

ONLINE POLL

RESULTS

ARE YOU AFRAID OF YOUR BANK ACCOUNT AND CREDIT CARD INFORMATION BEING STOLEN ONLINE?

RESULTS

Yes, and I take steps to keep my info safe. 77% (71 votes)

Yes, but there's not much you can do about it. 8% (7 votes)

No, incidents are isolated. 9% (8 votes)

No, I keep my money under my mattress, and I don't use credit cards 7% (6 votes)

Total votes: 92

THIS WEEK'S QUESTION

Now the Avalanche asks:

What improvement would you most like to see in the city?

- Street repair and paving.
- More walking/bike trails.
- Stricter code enforcement on abandoned/unsightly properties.
- A recycle program.

Vote for this week's poll online at: www.AlpineAvalanche.com

LETTERS

Send us your letters. Please include your name, address and phone number for verification purposes. Only your name and city will be published. Letters should be no more than 300 words. Letters become the property of the Alpine Avalanche and may be edited prior to publication for spelling and grammatical errors, clarity and length. Ad hominem attacks will not be accepted. Letters that include profanity or libel will not be printed. Send your letters to editor@alpineavalanche.com by noon Monday for consideration.

STAFF

ALPINE AVALANCHE

J.T. Maroney
Publisher
publisher@alpineavalanche.com

Gail D. Yovanovich
Managing Editor
editor@alpineavalanche.com

Shelley Maroney
Office Manager
bookkeeping@alpineavalanche.com

Roxanne Hill
Staff Reporter
hill@alpineavalanche.com

Mesinda Llanez
Sports Correspondent

432-837-3334
www.AlpineAvalanche.com
Facebook: Alpine Avalanche

ALPINE AVALANCHE (014 800) is published every Thursday morning at 704 East Holland Ave., Alpine, TX 79830. Periodical postage paid at Alpine, TX. POSTMASTER: Send address changes to Alpine Avalanche, P.O. Box 719, Alpine, TX 79831. Subscription rates in Brewster, Jeff Davis and Presidio counties are \$42 per year, \$48 in-state and \$52 elsewhere. Any erroneous reflection upon the character, standing or reputation of any person, firm or corporation will be corrected when such occurs in this newspaper and is brought to the publisher's attention.

MEMBER 2022

TEXAS PRESS ASSOCIATION



Turning the page

On Dec. 31 I will walk out of the Brewster County Courthouse as your county judge for the last time. I must admit there is a sense of impending loss that seems to be stirring deep down in the hidden regions of my subconscious. Well, I guess no more hidden regions since I just fully disclosed. So, with that being said, let's take a look at turning the page.



ELEAZAR CANO
Brewster County Judge

In Western culture, we are told to hustle in our professional development. The "hustle culture" promotes grinding for 12-16 hours a day, striving for high status and life success. The more you sweat, the more you should be appreciated for your efforts and the more promising your career path will be. The million dol-

lar question is, "Is there an alternative lifestyle?"

The concept of Wu Wei - Taoists believe in the power of gentleness. Yes, by forcing and striving, you might get the job done. However, grinding can cause lots of collateral damage, and is not good for you in the long run. Therefore, if you feel that you exert yourself with work, it's not a reason to be proud but rather, a reason to implement major changes in your career planning, in your schedule, or in your working style. If you constantly feel the effort, something is just wrong with your career development strategies.

Taoism is a school of balance. You might recognize the famous yin-yang sym-

bol stemming from the school of Taoism and representing balance in nature. Yin represents earth, femaleness, darkness, passivity, and absorption, while yang represents heaven, maleness, light, and activity. In this school of thought, the whole of nature is balanced, and so is an ideal human life, great life, and more.

Taoism is often referred to as the philosophy of flow, and Wu Wei is its leading concept. In Chinese, Wu Wei means nonaction, effortless action, non-doing, action without action, or being in the zone. When you are in the zone, or in a flow state, you engage in action without striving, worrying, or ruminating.

How does it look in practice? Let's say that you want to get to the other side of a lake. Of course, you can grab

a kayak and start rowing. But, you can also notice that the wind is blowing toward the opposite bank of the lake, and put a sheet on the mast, and make the wind carry your boat and do all the job for you. Similarly, in one's career development process, you can just observe the wind. Look for unfair advantages that you have in the job market, and position yourself in a way that allows you for making maximal professional progress with minimal effort.

This approach has nothing to do with opportunism. Taoism is the art of living intelligently, a sort of mental aikido. Some of you reading this contribution may have seen me on my Harley. Much like Bob Seger, my HD is my mast that will "Roll Me Away."

Peace and Love. Now go find your mast.

LETTERS TO THE EDITOR

Marfa voters beware

Marfa voters beware of the information being put out by the administration. The reason a bond is even being considered is because little to no maintenance has been performed to correct existing problems. All you have to do is look at the school grounds' lack of maintenance to get an idea of what the interior looks like. The students themselves have voiced concerns about plumbing that doesn't

work, leaky ceilings in some classrooms, and the biggest leak occurring in the library. Why would you put carpet in the auditorium when you have a perfectly wonderful tile floor. With the extremely large amounts of goat heads and grassburs on the school grounds, who will be responsible for cleaning them out of the carpet? It's being said that with a new building, student population will increase. Why are you building to a current population

of 240-270 students and you are expecting more to move into the district? Will that be another bond issue to address? The previous two bonds have not been paid off yet. It's also being said your taxes won't increase that much. With the market value of homes in Marfa going out of sight, your taxes will increase as well as your home owners insurance of which many of you have already experienced, not only because of property values, but also due to house fires in the community. This creates a

burden on all property owners. The school board is also pushing for new construction. They are going to have to answer the voters for their actions and non-actions. They apparently have closed eyes on the current problems. Of course this is just my opinion based on what I have observed, seen, and discussed with students and other tax payers. You have to decide what you want to shoulder for the next 30 years. Bernie Kelly Marfa

Murphy Street a large part of history

Lisa and Guy Fielder are owners of property on Murphy Street. They are proposing to build a brewery on their property. New business on Murphy Street is very welcomed. The Fielders have spoken to me about being part of the neighborhood. That also is very welcomed. Their vision, though, I

believe, is not what our neighborhood and Historic Murphy Street is. Murphy Street is a large part of the history of Alpine. Families in our neighborhood have lived here for generations. Our look is what draws visitors to investigate another part of Alpine. We are colorful. We have some of the oldest historic buildings and homes in Alpine. The proposed brewery

is a very nice building, but can be found in any city. It's not Historic Murphy Street. My business has been on Murphy Street for 10 years. In that time I have spoken to hundreds of visitors. Not one has ever said we should have a different look. Bringing new business to Historic Murphy Street is very desirable, but let it fit in with our culture and really be a part of the neighborhood.

What is important in our neighborhood is a closeness of family and friends. It's a feeling of walking down the streets knowing we care about one another and have a sense of belonging. That feeling is part of the draw the brings visitors to Historic Murphy Street. Let's keep that feeling. Nancy Davila Alpine

Words matter

Will the "slight recession" now predicted by President Biden be the equivalent of the "small incursion" by Russia into Ukraine he thought he could overlook?

Sanctions to punish Saudi Arabia for tightening the oil supply? The Saudis foresee a major recession, and are not going to glut the marketplace with oil that will not get consumed. Does that help Russian oil prices? Of course. Diplomacy might have steered

toward a happier outcome had the POTUS not called Putin and Bin Salman murderers at the beginning of his administration. Words matter. Rex Redden Alpine

Looking forward to doing business in Alpine

We've found it's impossible to build a new business from the ground up without learning some hard lessons. The things my family has gained over the past year from architects, consultants, city officials, and Alpine citizens have led to significant changes in the initial design of the Chisos Brewing Co. As a soon-to-be local employer, we hope our neigh-

bors feel they have a stake in Chisos, and we're happy to update them on some of the most important changes. Whereas the Big Bend Brewery produced approximately 30,000 barrels (930,000 gallons) of beer per year, Chisos will initially produce only 1/30 of that amount, or about 1,040 barrels per year. Even if we someday become very successful, our maximum capacity brewing twice a day five days a week, won't exceed 5,500 barrels

per year, too small to meet the 15,000 barrels per year industry definition of microbrewery as established by the Brewers Association. Chisos Brewing will be classified a taproom brewery. More important for a business, even at maximum capacity if we ever reach it, Chisos' total operation will consume less water every month than two average American families. And, by recycling brewery wastewater for agricultural use, we'll put

less water back into Alpine's sanitary sewer system than the average Alpine family already does. Our family has poured time, resources, and our hearts into creating a welcoming place for all of Alpine's citizens to meet, relax, and build community - a place everyone can be proud to visit with friends and family. We look forward to opening Chisos Brewing Company's doors to you soon. Lisa Fielder Alpine

Heard on the STREET

Do you believe in ghosts?



Jimmy Case, Alpine: I don't believe in ghosts, but I believe in Halloween. I had great Halloweens growing up in the Texas Panhandle going trick or treating and in the school fairs - really good memories.



Arianna Castillo, Alpine: I used to work at the Holland Hotel by the Century, and sometimes the cash register would just open! I worked as the hostess. It was always creepy in there.



Evelyn Carey, Alpine: No, because they are not real, and because you don't see them.



Ralph Gruebel, Alpine: Yes, I do. There's weird stuff in the universe - they're bound to exist.



James Carey, Alpine: I only believe in red ghosts, and I'm going to be a Red Ranger for Halloween.



Send your community events to editor@alpineavalanche.com.

UPCOMING EVENTS

OCT. 22 Halloween Harvest Festival Parade, 10 a.m. lineup, parade at 11 a.m. at Alpine Civic Center, down Holland Ave. to Cockrell St. For more information, contact Mary Ann Lujan at 432-294-2370

Cornhole Tournament, 1 p.m. at American Legion Post 79 in Alpine. Proceeds benefit Alpine High School Project Graduation 2023. Also a taco

bar supper, dessert, and drink. Registration begins at noon, or to register early contact Melissa at 432-386-6224.

OCT. 22-23 Haunted House, 4-9 p.m. Saturday and Sunday at Family Crisis Center of the Big Bend, 2001 Ghost Town Rd. In Terlingua. Costumes are encouraged. Entry fee \$5. Children 10 and under must be accompanied by an adult.

OCT. 29 Great Pumpkin Giveaway, 11 a.m.-3 p.m. at Alpine Visitor Center, 106 N. 3rd St. Hosted by Alpine Police Department. Pumpkin giveaway, hay maze, bounce house, face painting, live music, snacks and drinks, and more. Free and open to the public.

Come Fall for Jesus, 4 p.m. at Calvary Apostolic Church of Alpine, 45980 Hwy. Giveaways, food, games, and more. Everyone is invited

Trunk or Treat, 5:30-7:30 p.m. at the Alpine city pool park-

ing lot, 1502 Fighting Buck Ave. Presented by Marfa and Alpine MWR and Alpine Police Department. Face painting, games, best costume contest, best trunk contest, and more. Open to Border Patrol families and local law enforcement agencies.

OCT. 30 Queso Contest, 4-7 p.m. at the Hotel Ritchey, corner of Murphy and N. 5th streets in Alpine. Food, music, and silent auction to benefit the Alpine Humane Society. Details at alpinehumanesociety.org, or call 432-837-2532.

NOV. 12 Horseshoe and Cribbage Tournaments, 9:30 a.m., Ken & Joe May Barnes Memorial Scholarship fundraiser at Terlingua Ghost Town horseshoe pits. Arrive by 9 a.m. to sign up. Barbecue plates served around noon followed by auction. All proceeds benefit Terlingua school graduates.

David R. Delaney Memorial 5k Run/Walk, 10 a.m. at Koker-

not baseball field, Loop Rd. in Alpine. Presented by Alpine Morale Welfare and Recreation. Signup fee \$30, shirt and meal included.

ONGOING EVENTS

Alcoholics Anonymous, 502 E. Lockhart Ave. Schedules available on front door. For more information, call 915-562-4081 or aa-intergroup.org.

Alpine Lions Club meet-

ing, noon Tuesdays at the BBT conference room, 5th St. and Brown St.

American Legion Post 79 meeting, 6:30 p.m., second Monday each month, Legion Hall, 306 W. Sul Ross Ave. Dinner provided.

American Legion Auxiliary meeting, 4 p.m., third Monday each month, Legion Hall, 306 W. Sul Ross Ave.

Come Celebrate Our 11th Year In Business

CELEBRATION

Huge Savings From Weekly Manager Specials & A *BOGO RACK OF ASSORTED LIQUOR

NOW THRU NEW YEARS DAY!

704 W HOLLAND ALPINE

* BUY ONE GET ONE FREE

Marathon ISD to host Halloween carnival

On Friday, Oct 28, at Marathon Elementary School, 105 North Fifth Street, Marathon ISD will host a Halloween carnival.

The costume contest will start at 5: 30 p.m., followed by the carnival from 6-8 p.m.

Festivities will include a cake walk, and donations of any homemade dessert such as cakes, cookies, candy apples, and popcorn balls would be welcomed.

Call or text Mandie Hernandez at 432-386-2477 for more information.

Serving it up



Alpine Kiwanis Club members Sara Stropoli and Judy Stokes serve up dinner to Jan Moeller at the club's annual spaghetti supper on Oct. 13 at Alpine Elementary School.

Avalanche photo by Gail Diane Yovanovich

PET OF THE WEEK

Alpine Humane Society Pet of the Week is Sky, a three-year-old black and white Husky mix. A pretty big girl, she weighs in at 84 pounds. Sky would love to join your family, and have a home of her own. You can meet Sky at the Alpine Animal Shelter, and watch her in our playgroup during weekday mornings.

Get ready for some fun at Dia de los Quesos on Sunday, Oct. 30, from 4-7 p.m. at the Hotel Ritchey courtyard. Bring your best queso in a crockpot to see if it's a winner. And be ready to bid on some great items in the silent auction. Want to donate an item to our auction? Call 432-837-2532 for details.

Alpine Animal Services handles pet adoptions at the city shelter, 10 a.m.-1 p.m. and 2-6 p.m. Monday



through Friday at 2900 East Old Marathon Highway. Cats and kittens are also available for adoption at the AHS cattery located in our Thrift Store.

The Alpine Humane Society Thrift Store and Cattery is at 706 North Fifth Street, open 10 a.m.-5 p.m. Monday through Saturday. For information about shelter pet adoptions, cremation services, or lost/found pets, call the shelter at 432-837-9030. To view adoptable pets, visit PetFinder.com or alpinehumanesociety.org.

Tires
Parts
Accessories
Service
24 HR roadside

Everything to keep you running

YOKOHAMA COOPERTIRES BFGoodrich
FALKEN NITTO MICHELIN
& more!

OASIS TIRE Co.

2601 E. Hwy 90
Alpine
432-837-5030

NOTICE OF JOINT GENERAL ELECTION (AVISO DE ELECCION GENERAL)

NOVEMBER 8, 2022 (EL 8 DE NOVIEMBRE DE 2022)

TO ALL THE REGISTERED VOTERS OF THE COUNTY OF BREWSTER, TEXAS: (A TODOS LOS VOTANTES REGISTRADOS DEL CONDADO DE BREWSTER, TEXAS:)

Notice is hereby given that the polling places listed below will be open from 7:00 am to 7:00 pm, November 8, 2022 for voting in a joint general election with Marathon ISD to elect members of Congress, members of the Legislature, and state, district, county and precinct officers; and to elect Marathon ISD Trustee(s).

(Notifiquese, par la presente, que las casillas electorales citadas de bajo se abrirán desde las 7:00 am hasta las 7:00 pm el 8 de Noviembre de 2022 para votar en la Elección General conjunta con Marathon ISD para elegir miembros del Congreso, miembros de la Legislatura, y oficiales del estado, distrito, condado y del precinto; y para elegir a las Fidelcomisarios de Marathon ISD.)

On Election Day, voters must vote in their precinct where registered to vote. (El Día de Elección, las votantes deberán votar en su precinto donde están inscritos para votar.)

LOCATIONS OF POLLING PLACES (DIRECCIONES DE LAS CASILLAS ELECTORALES)

Place and location	Voting Precincts
Assembly of God Fellowship Hall-Across from Alpine High School, 1802 N Hwy 118, Alpine Texas 79830	Precinct 1
Judge Val Clark Beard Office Complex (Old Library), 203 N 7th St, Alpine Texas 79830	Precinct 2
Marathon Community Center, 2nd and Ave E, Marathon Texas 79842	Precinct 3
Alpine Civic Center-Council Chambers, 803 W Holland, Alpine Texas 79830	Precinct 4
Panther Junction Visitor Center, Big Bend National Park Texas 79834	Precinct 5
J.W. "Red" Pattillo Community Center, Hwy 118, StudyButte/Terlingua, Texas 79852	Precincts 6 & 7
Food Pantry of Alpine, 933 East Gallego Ave, Alpine Texas 79830	Precinct 8

FOR EARLY VOTING, a voter may vote at the location listed below, on the dates and times listed. (Para la votacion anticipada , un votante puede de votar en el lugar que se indica a continuacion)

Monday (Lunes)	Tuesday (Martes)	Wednesday (Miercoles)	Thursday (Jueves)	Friday (Viernes)
Oct 24 7 am -7 pm	Oct 25 8 am - 6 pm	Oct 26 8 am - 6 pm	Oct 27 8 am - 6 pm	Oct 28 8 am - 6 8 am - 6 pm
Oct 31 7 am- 7 pm	Nov 1 8 am - 6 pm	Nov 2 8 am - 6 pm	Nov 3 8 am - 6 pm	Nov 4 8 am - 6 pm

REMOTE EARLY VOTING will be available on November 2nd & 3rd 2022 from 9:00 am to 5:00 pm as follows:

Location	Precincts
Marathon Community Center, 2nd and Ave E, Marathon Texas 79842	Precinct 3 only
Panther Junction Visitor Center, Big Bend National Park Texas 79834	Precinct 5 only
J.W. "Red" Pattillo Community Center, Hwy 118, StudyButte/Terlingua Texas 79852	Precincts 6 & 7 only

APPLICATIONS FOR BALLOTS BY MAIL shall be mailed to: (Las solicitudes para boletas para votar por adelantado por correo deberán enviarse a:)

Lora Nussbaum, Early Voting Clerk, 107 W Ave E #3, Alpine TX 79830

Applications for ballot by mail can also be delivered in person Monday-Friday between 8 am and 5 pm to: Lora Nussbaum, Early Voting Clerk, 203 N 7th St, Alpine TX 79830

Applications for ballots by mail must be received no later than the close of business on October 28, 2022 (Las solicitudes para votar par adelantado por correo tienen que ser recibidas no mas tardar que el fin de negocio el 28 de octubre de 2022.)

Phone 432-837-6230 Email election.admin@co.brewster.tx.us
County Website: www.brewstercountytx.com

Issued this 13 day of September, 2022 (Emitido este día) 13 de septiembre 2022)

[Signature]
Signature of County Judge (Firma del Juez del Condado)

CENTURY TRAILER COMPANY

2900 W. Dickinson Blvd. Fort Stockton, TX
432-336-8797
centurytrailersftstockton.com

Trailer Sales,
Parts & Service,
Truckbeds
& Grill Guards

32' Gooseneck Brand

LETTERS • FROM 4

I love Alpine!

I grew up in Alpine, and I have always loved the people, sense of community, and peacefulness I find in Alpine. I want my little boys to see where I grew up, so we recently bought an historical Alpine home, and we are having it designed and renovated by awesome professionals who live right here locally. I was an Alpine High

School cheerleader, and I feel now, as an adult within my heart, there's a cheerleader with a megaphone cheering loudly for my hometown. I proudly say, I'm from Alpine, and people not familiar with Far West Texas say, "Is that near Marfa?" I politely say Marfa is near Alpine. Alpine is the largest town in the largest county in Texas. Often I'm encouraging professionals such as phy-

sicians, teachers, caregivers, business owners, and entrepreneurs to move and start a business in my hometown. I believe the Chisos Taproom will help the local economy and provide employment for people in Alpine. Murphy Street is looking good, but will look even better with Chisos Taproom. When parents come to town to visit their son or daughter at Sul Ross, or

visitors come to town for Viva Big Bend, a Cowboy's baseball game, or step off Amtrak in Alpine, they can see a space and meet friendly people representative of our beautiful town. Best of all, the Chisos Taproom will be a wonderful meeting place for locals and lifelong friends to meet, gather, and discuss how to keep improving our Alpine. Go Bucks! May Leal Michelotti

WEST TEXAS EYECARE
 Dr. Helen Pass - Optometrist
 Dr. Joshua Pass - Optometrist
 Dr. Brian Cherry - Optometrist

WEST TEXAS EYECARE
 605 N. Main P.O. Box 1568
 Ft. Stockton, TX 79735
 432-336-3662 • 432-336-6711
 Mon - Fri 8:30 am-5:30 pm

VOTING • FROM 1

will face off for the highest position in Brewster County. Down South, Republican Mark Chiles and incumbent Democrat Sara Colando will face off for Commissioner, Pct. 2, and Republican Paul Rashott and Democrat Tim Rella for Pct. 2 Justice of the Peace. In Marathon, Marina Aguilar and Arlene Griffis will vie for that town's independent school district Place No. 1, and Dara Cavness and Andy Lewis for Place No. 2. Also of local interest, Democrat John Lira and

Independent Frank Lopez, Jr., will challenge incumbent Tony Gonzalez for the U.S. Representative, Dist. 23, spot. Republican Katherine Parker will challenge Democratic incumbent Eddie Morales for Texas Rep., Dist. 74, incumbent Democrat Roland Gutierrez will face Republican Robert Garza for State Senator Dist. 19, and Democrat incumbent Cesar J. Blanco will face Republican Derek L. Zubeldia. In statewide races, incumbent Republican Greg Abbott and Democrat Beto O'Rourke are

engaged in a bitter campaign for the state's highest office, with Libertarian Mark Tippetts and Green Party candidate Delilah Barrios also in the mix. For lieutenant governor, Republican incumbent Dan Patrick, Democrat Mike Collier, and Libertarian Shanna Steele are competing for that spot. Beset with legal woes, embattled incumbent Republican Ken Paxton will face Democrat Rochelle Mercedes Garza and Libertarian Mark Ash. Also up for grabs state-

wide are comptroller, commissioners of agriculture, railroad and general land office, state board of education, and supreme court and appeals court justices. At the polls, voters must show a valid photo ID. To see acceptable forms of voter ID, visit votetexas.gov and click on Identification Requirements for Voting. Voters may view sample ballots and instructions for voting by mail at brewstercountytexas.com, or at the elections office in the Val Clark Beard Complex.

CLINIC • FROM 1

The project - in the works for seven years - was Roberts' brainchild. She said Big Bend residents can now access Texas Tech physicians out of Odessa at the new health center, and get appointments within one to two days. Roberts first started knocking on doors at Texas Tech Health Science Center, and came across Texas Tech physician Dr. Timothy Benton who was instrumental in realizing the project.

help a community with their skills and have a place to stay, they are happy to do it. When it is not being used, we can rent it to provide additional income for the health center," said Roberts. She indicated that Texas Tech University recently sent a film crew to the center, and they will be taking their work to the Texas Legislature

as the prototype for rural health centers across the state. In addition there are several Big Bend communities looking at this same prototype for their towns. Roberts, who is Executive Director of the Marathon Foundation, credits the philanthropic group for enabling grant awards to make the health center a reality for the community.

"We are preparing ourselves for the future here in Marathon," said Roberts. "We want to provide healthcare because it's desperately needed right now."

OLE CRYSTAL BAR
 18YR AND UP WELCOMED

COME IN DEN AND CHECK OUT OUR DAILY DRINK SPECIALS AND GIVEAWAYS!

LIVE MUSIC THIS WEEKEND!

www.alpineavalanche.com

Restaurant Guide
 \$15 a week gets you a spot in our restaurant guide
www.alpineavalanche.com

ESPRESSO... Y POCO MAS
 Located in Terlingua Ghosttown next to La Posada Milagro Guesthouse
 432-371-3044
www.laposedamilagro.net
 Open 8am - 2pm Mon. thru 5.
 Menu items (some items change daily): Breakfast burritos, breakfast english muffins, eggs benedict, quiche, breakfast pastries, organic fair trade coffee, espresso, cappuccino /latte /mocha, fresh squeezed juices, smoothies, homemade soups, ham /turkey / chicken breast sandwiches, Reuben sandwiches, meatloaf sandwiches, curry chicken sandwiches, rotisserie chicken & picnic lunches, fruit pies, cobblers, brownies, tres leches cake.

REATA RESTAURANT
 COCINERO: Beef • Chicken • Shrimp
STARTERS: Tortilla Soup Bowl • Jalapeno and Cilantro Soup • Bacon Wrapped Shrimp with Onion Jam and Pico de Gallo • Bacon Wrapped Asparagus • Tumbleweed Onion Rings with Spicy Serrano Ketchup • Alpine Black Bean & Chicken Nachos
 CF Burger with Aged Cheddar Cheese on a Kaiser Roll • Fried Chile Relleno stuffed with Cream Cheese, Corn and Peppers • Carne Asada with Reata's Cheese Enchiladas • Chicken Caesar Wrap with Hand Cut Fries • Tendeolain Tacos with Sundried Tomato Cream Sauce • Grilled Chicken Breast topped with Mango Chutney
SADDLE PACK COMBINATION:
 (Your choice of any two items)
 Cup of Tortilla Soup • Cup of Jalapeno and Cilantro Soup
 Cup of Daily Soup • 1/2 Reata Club or Steak Sandwich
 1/2 BLT Sandwich with Peppercorn Bacon

116 N 5th in Alpine, TX
 432-837-4028 | www.alpinewine.com
 Lots of food and drinks • Happy hour and live music
 Thursday-Saturday 11:30 to 9
 Sunday-11:30 to 6

Vote in the best interest of your family, city, county, state, and nation.

**YOUR VOTE IS YOUR VOICE!
 SU VOTO ES SU VOZ!**

BREWSTER COUNTY VOTERS:
 From Federal to State and Local offices, in the November 2022 General Election, Democratic candidates offer better alternatives to obstruction, division, corruption and policies that harm our citizens, businesses, communities, state and nation.

Core values of Democratic candidates:

- An economy focused on the middle-class and small businesses, not the super-wealthy and large corporations.
- Equal opportunity and justice under the law for everyone.
- Available and affordable healthcare for everyone.
- The right to privacy in reproductive health and other personal decisions.
- Support for essential industries while protecting our health and the environment.
- Advancements in public and higher education for our children's futures.
- Respect and care for our Veterans.
- Security, safety, and health for our nation and people.
- Honesty and transparency in leadership.

EARLY VOTING: October 24 - November 4 (Mon. - Fri.) ■
ELECTION DAY: November 8 Find your voting locations at www.brewstercountytexas.com/vote
BALLOTS BY MAIL: Eligible voters can request mail ballots from the County Election Office (432-837-6230). Deadline to request a ballot by mail is October 28. To be counted, mail ballots must be returned to the County Election Office by 4 PM on November 8.

Sponsored by:

CAPITAL FARM CREDIT
 capitalfarmcredit.com
 NMLS493828
 PROUD MEMBER OF THE FARM CREDIT SYSTEM

432.837.5948 | 108 West Avenue E | ALPINE

ROSWELL LIVESTOCK AUCTION SALES, INC.
SALE DATE: MONDAY, OCTOBER 17, 2022

1115 head of cattle sold on a steady to higher market, with excellent buyer attendance. This is the top of the market and prices range down from this according to quality, quantity, condition, and fill.

COMPARED TO LAST WEEK:
Stocker Calves: Steady to \$10.00 higher
Feeder Cattle: Steady to \$5.00 higher
Packer Cows and Bulls: Steady to \$1.00 higher

300# - 400# Steers	180.00 to 190.00
300# - 400# Heifers	161.00 to 166.00
400# - 500# Steers	190.00 to 194.00
400# - 500# Heifers	159.00 to 166.00
500# - 600# Steers	166.00 to 183.50
500# - 600# Heifers	144.00 to 159.00
600# - 700# Steers	163.00 to 166.00
600# - 700# Heifers	140.00 to 144.00
700# - 800# Steers	158.00 to 163.00
700# - 800# Heifers	Not well tested
Packer Cows	70.00 to 78.00
Canner & Cutter Cows	60.00 to 68.00
Packer Bulls	Not well tested
Feeder Bulls	80.00 to 87.50
Cow / Calf Pairs - Top Half	Not well tested
Bred Cows - Top Half	Not well tested

No phones at the polls, but you can bring this clipping with you when you vote!

- FOR THE UNITED STATES**
 ■ Representative, District 23 - John Lira
- FOR THE STATE OF TEXAS:**
 ■ Governor - Beto O'Rourke
 ■ Lieutenant Governor - Mike Collier
 ■ Attorney General - Rochelle Mercedes Garza
 ■ Comptroller, Public Accounts - Janet T. Dudding
 ■ Commissioner, General Land Office - Jay Kleberg
 ■ Commissioner, Agriculture - Susan Hays
 ■ Railroad Commissioner - Luke Warford
 ■ Justice, Supreme Court Place 3 - Erin A. Nowell
 ■ Justice, Supreme Court Place 5 - Amanda Reichel
 ■ Judge, Supreme Court Place 9 - Julia Maldonado
 ■ Judge, Court Criminal Appeals, Place 5 - Dana Huffman
 ■ Judge, Court Criminal Appeals, Place 6 - Robert Johnson
 ■ Board of Education, District 1 - Melissa N. Ortega
 ■ State Senator, District 19 - Roland Gutierrez
 ■ State Senator, District 29 - Cesar J. Blanco
 ■ State Representative, District 74 - Eddie Morales
 ■ Justice, 8th Court of Appeals District Place 2 - Lisa Soto
- FOR BREWSTER COUNTY:**
 ■ County Judge - Oscar Cobos
 ■ Commissioner, Pct 2 - Sara Allen Colando
 ■ Justice of the Peace, Pct 2 - Tim Rella

Paid by Big Bend Democrats, Mary Bell Lockhart, Treasurer, 107 E Lockhart Ave, Alpine, Texas 79830

GET IN, GET OUT & GET BACK TO THE JOB

SPEED THROUGH OUR DRIVE THROUGH LUMBER YARD

2700 E. HWY 90 ALPINE TEXAS 79831
432-837-7429



★ EST 1891

LOOKING BACK

SERVING THE BIG BEND
AND DAVIS MOUNTAINS COUNTRY

Alpine Avalanche

October 20, 1950



October 12, 1945
John C. Epperson was elected president of the newly formed Sul Ross Booster Club at a meeting held here Monday night.

FLOYD'S FEED STORE
Purina Chows Phone 218
NEXT TO CP&L OFFICE

October 4, 1940

Pansy type depends on use

Dear Neil: Someone told me I would like the smaller-flowering pansies better than the types with large blooms. Why would they say that?

Much of it depends on how and where you will use them. When you grow smaller pansies or violas, you can expect to get many more flowers per plant. That means that they will blanket themselves better if you're viewing them from 8-10 feet away or farther. The giant types show up best when viewed from close distances, notably in patio pots and hanging baskets, or when you're intending to use them as cut flowers or pressed in arrangements. Along with the flower size, you also need to consider pansy "faces." Flowers that have contrasting blotches won't show up as strikingly. Use flowers with those faces for floral arrangements,

GARDENER'S MAILBAG
by neil sperry

but plain-faced blooms for landscape displays.

Dear Neil: We have several pecan trees on property we have lived on for a couple of years. We have not seen one pecan fall from these trees in that time. What few we have had were ruined by squirrels, and thrown to the ground before they matured. Is there anything we can do to get pecans?

Please think back to the

past two years with a record February cold spell that did monumental damage to woody plants just before the growing season began. Trees had already started leafing out and blooming. Most of us got no pecans at all last year. This year has seen a near-Biblical drought. Once again, our trees have been challenged horribly. Be patient. Our house sits within a forest of native pecans, and we've had the same experience.

Dear Neil: I've read your column for decades, and I know you really like crepe myrtles. My wife is in love with the red

variety. When is the best time to plant it?

Google "photo Tuscarora crepe myrtle," and see if the flower color and trunk appearance don't match. It's one of the hybrids developed by Dr. Don Egolf from the U.S. National Arboretum. Some websites list it as pink, others as rosy-red. Personally, I see it as red, and I really

like it. However, for colder parts of Texas it has the annoying habit of dying back severely with either early cold spells or extreme winter temperatures. Egolf selected it from his thousands of seedlings for its bright color, immunity to powdery mildew, and handsome trunk color. If you would ever consider

a more true red selection, his last introduction was Arapaho, and it has all the same attributes with better winter hardiness. It's much harder to find, however.

Have a question you'd like Neil to consider? Email him at mailbag@sperrygardens.com. Neil regrets that he cannot reply to questions individually.



Clear faces on pansies show up best with the red from a distance.

- ACROSS**
- festive Texas party
 - Kuwait's ruler
 - XIT once covered _____ counties
 - TXism: "como _____" (How are you?)
 - Mary's Univer. is in San Antonio
 - _____ western State is in Wichita Falls
 - TXism: "fire and fall _____" (retreat)
 - now a ghost town in NE Oldham County
 - TX Johnny Horton's "North to _____"
 - Sam Houston was _____ by a Cherokee chief
 - Texas war cry: "Remember _____"
 - "Situation _____, all fouled up"
 - Aggie kisses his/her _____ after a score
 - transport to DFW
 - Dallas mayor at time of JFK assassination, Earle
 - TXism: "that's a fine how do _____"
 - military color
 - TXism: "pull the _____ fire" (rescue)
 - TXism: "if you _____ gotta pay the band"
 - film: "The Great Texas Dynamite _____"
 - San Antonio pianist Samaroff

- Houston Museum of Fine _____
- state seal has "a star of five _____"
- a _____ of smoke
- "One _____, one Ranger"
- TXism: "mad as _____-eyed cow"
- TXism: "not a lick"
- this treaty led to destruction of missiles in Texas
- TXism: "shootin' _____"
- Brazos: "arms of _____"
- concealed
- Cowboy scores

- DOWN**
- former head coach at Texas A&M and Alabama (2 wds.)
 - _____ Reservoir means "friendship"
 - belly button fuzz
 - Burnet _____ codes are 512 and 737
 - Elm _____, TX
 - TX Tanya's "Can _____?"
 - the traffic light was invented by TX Henry "_____ " Garrett
 - TXism: "eating out of the same feed _____" (associated)
 - TXism: "_____ to shuck" (big chore)
 - TXism: "_____ boose" (jail)
 - Corpus Christi AM
 - TXism: "_____ buster"
 - TXism: "tax wrangler"
 - TX Claire Chennault was adviser to Chiang _____-shek
 - "in the year of our Lord" (abbr.)
 - Mrs. Connally (init.)
 - _____ Ridge North, TX
 - Gov. Hubbard (init.)
 - TXism: "_____ muffins" (cow chips)
 - a base that dissolves in water
 - Texas-_____ weekend
 - TXism: "as hard as finding a horse _____ in heaven"
 - TXism: "lend a _____"
 - Ted Cruz's time on the job (abbr.)
 - Rangers' or Astros' headwear
 - former Cowboy star, Emmitt (init.)
 - should not be taken by a Texas athlete
 - TXism: "_____ in the neck" (annoying)
 - wagering numbers at Texas race tracks

TEXAS CROSSWORD

by Charley & Guy Orbison
Copyright 2022 by Orbison Bros.

BARGAINS OF THE MONTH

<p>7.49 YOUR CHOICE NaturalAire® Microparticle Pleated Furnace Filter F 214 021, 023, 025, 029 F6</p>	<p>19.99 Razor-Back® 24 in. Spring Brace Rake 1 194 215 F12</p>	<p>39.99 YOUR CHOICE First Alert® 10-Year Smoke & Carbon Monoxide Alarm or 3A 409C Rechargeable Fire Extinguisher E 246 217, 210 433</p>
<p>4.99 Frost King® 3 pk. Indoor Window Insulation Kit 5 895 915 912</p>	<p>22.99 Comfort Zone® Personal Heater W 265 901 6</p>	<p>19.99 YOUR CHOICE Bona® 160 oz. Hardwood Floor or Hard Surface Cleaner Refill W 110 602, 603 84</p>
<p>52.99 Vacmaster® 5 gal. 3 Peak HP Wet/ Dry Vac R 248 916 1 Model: VDC507PF</p>	<p>10.99 YOUR CHOICE GE® 4 pk. 5W or 8W Soft White or Daylight A19 LED Bulbs E 144 047 048 074 075 076</p>	

MORRISON TRUE VALUE
301 N 5TH ST
ALPINE TEXAS 79830
432-837-2061
www.morrisonhardware.com

True Value.
Sale ends 10/31/22

Find the right products for your project at your local True Value®.

Last Puzzle Solution

S-1606

Planning for the future is easy with TrasPecos Banks.

Let us help guide you with:

- Estate Planning
- Financial Caregiving
- Retirement
- Debt Management

These are your best years



TRANSPecos BANKS
Texas Banking at its Best.

402 W Holland Ave. | Alpine, TX 79830 | 432-837-0094
www.transpecosbanks.com

Member FDIC

Proud Alpine Bucks

Sponsors:



Sports

Page 8 Alpine Avalanche Thursday, October 20, 2022

Lady Bucks remain undefeated in District

BY J.T. MARONEY
Publisher

As the seasons start to change, the Alpine Lady Bucks look to wrap up District, and advance to the playoffs in a couple of weeks. Currently Alpine is sitting 19-10 overall, and undefeated in District. The team is in the second round of District play, facing those opponents once again.

As Alpine entered the court on Oct. 18, they were determined to have a repeat of the last meeting. This would be a tough one for the visiting team as the energy at the Buck pit was no match for the Lady Yellowjackets.

Kermit fans were agitated with the student section as they helped rally the troops through the sets. Set one was packed with energy and aggression, as junior Adayna Garcia delivered some big blows with her hard-hitting kills. Good setting from junior Paula Vargas also assisted in winning set one, 25-10.

Set two and three went on to be entertaining as well, with kills from



Alpine Varsity junior Hannah Juett goes up for a kill against Kermit on Tuesday. The Lady Bucks remain undefeated in District.

junior Novah Carrasco and Hannah Juett. Juett's ability to read ball placement near the net advanced the winning gap as she recorded multiple tips and kills. Sophomore Jaycee Portillo helped lead the Lady Bucks with her serving and digging on the back row.

The final score in set two was 25-14, and three was 25-15.

The Avalanche spoke

with Head Coach Autumn Kilpatrick after the game about the advice she gives her team about the upcoming matches.

"It starts in practice," she said. "We need to focus, and prepare for the remaining District games so we can seal our rank in District. There are going to be tough games, but if we play like I know we can, we should walk away with wins."

Fightin' Buck Schedule

FOOTBALL	11 a.m./V noon
Oct. 28: Tornillo @ Tornillo Varsity	Oct. 25: Presidio @ Alpine JVP/JVG 5
7:30 p.m.	p.m./V 6:30 p.m.
Oct. 27: Reagan County @ Reagan County JV 6 p.m.	
VOLLEYBALL	CROSS COUNTRY
Oct. 22: Crane @ Crane JVP/JVG	Oct. 23: Regional Championship Meet @ Lubbock TBA

Garcia also spoke about the game and the future, saying, "Our win tonight was well deserved. Tonight's game

may have had the most energy so far. We have a few minor things

See VOLLEYBALL • 9

Ely Gallego named new head baseball coach

On Oct. 5, Ely Gallego was officially named head baseball coach at Sul Ross State University.

Gallego spent the previous four seasons as a full-time assistant under former head coach Bobby Mesker, who is now the head baseball coach at Midland Christian after 14 years at the helm of the Lobos.

"It's a privilege to be able to step in and be the new head coach. I've been here for a quite a while. So, to be able to start running the program is a huge honor," Gallego said.

"Ely has been a great



Ely Gallego

asset to our staff for several years, and I am very excited for him to become our next head coach. He loves the game of baseball," said Sul Ross Athletic

Director Amanda Workman. "We had a very competitive field of applicants, but Ely led the pack with his passion for Sul Ross and knowledge of the game of baseball. I am honored for him to serve in this new capacity."

Gallego hit .352 during his senior season at Sul Ross in 2016, with 56 hits, 16 doubles, seven

See GALLEGO • 9

Dia de los Muertos

When: Tuesday, November 1st 5:30pm

Where: Visit our brand new chapel 209 W. Sul Ross Ave. Alpine, Texas

Starting October 30th, if someone wants to bring pictures of their loved ones to display, they can drop off during business hours. A clergy will provide a blessing and Pan Dulce (sweet breads) and refreshments will be served.

Alpine Memorial FUNERAL HOME
CREMATIONS • PRENEED PLANS

432-837-2222
www.alpinememorialfuneralhome.com

Vote
Mark Chiles
for

**County Commissioner
Brewster Co. Precinct 2**

Chiles4Brewster.org



Political advertising paid for by Mark S. Chiles Campaign

Lamb and goat validation coming up

It is time once again to validate animals for the stock shows. Sunday, Oct. 23, will be validation for lambs and goats only for all shows. Goats will validate from 1-2:30 p.m., and lambs from 2:30-3:30 p.m.

All animals, kids, and at least one parent or guardian must come to the ag barn for validation. Social security numbers are not required.

To exhibit at the Big

Bend Livestock Show, only a county tag is needed.

There is a one time per year administrative fee of \$5 per child payable to BBLSA.

There will also be BBLSA membership form available on this day. The fee is \$5 per person, \$10 per family, or \$20 per business. BBLSA membership is for adults, not the kids. BBLSA is the county livestock association

that puts on the county livestock show. The fees collected are used to buy awards for the kids, and offset the expenses of the stock show. The rules state that parents/guardian must be a member of the association for their child/children to exhibit their projects. These fees are payable to BBLSA, or Big Bend Livestock Show Association, and can be given to an officer of the association at validation.

Fightin' Buck Band marches on



On Oct. 18 the Alpine Fightin' Buck Band traveled to Abilene to participate in the Regional Marching Band Competition. The band earned a Division 2 rating for its performance.

Courtesy photo

Winning at Clarendon

At the National Intercollegiate Rodeo Association Clarendon Stampede last weekend, Sul Ross State University's

Tristen Hutchings was the steer wrestling champion with 7.4 seconds on two runs to win the average title. Will Eddleman

and Dylan Hancock won the team roping header.

The Sul Ross men's and women's teams each finished sixth overall.

Eighth grade Bucks at Crane

On Oct. 13 the Alpine Fightin' Buck eighth grade football team played the Crane Golden Cranes.

Courtesy photo



GALLEGO • FROM 8

homeruns, and 49 RBI. On the mound he went 6-5 throwing five complete games in 80.1 innings with 60 strikeouts. He led the team in homers and RBI.

After his collegiate career, Gallego spent four seasons with the Alpine Cowboys of the independent Pecos League from 2016-2019. He hit a career .344 with 13 homeruns, 97 RBI, and 124 hits, while as a pitcher he finished 20-6 with a career 5.71 ERA.

Gallego was a member of the 2019 Pecos League championship squad.

Ever since he played at Alpine High School from 2009-2012, Gallego has always been a competitor.

"Alpine is a great town for baseball. The community loves watching baseball," said Gallego. "It's an honor to be able to do it being from Alpine. I hope to continue the success and try to keep growing on it."

VOLLEYBALL • FROM 8

that we need to work on. Overall, I am immensely proud of our team, and we must keep this momentum going."

The Oct. 21 match up will be one of the most challenging games left to play as Alpine will travel to Crane, and battle the home team on Friday night instead of Saturday due to a conflict with the band competition.

As the rivalry continues to boil among the student body, they are sure to pack the house while their football team travels to Tornillo. Crane last played Alpine at home to a packed, rambunctious house, and all bets are off when Alpine shows up.

Senior night is slated for Oct. 25 as Alpine will play its last match-up against Presidio.

ATHLETE OF THE WEEK

MATEO MIRANDA

Mateo is a team leader and mentor to his teammates and continues to help lead the Bucks.

Brought to you by

Alpine Community Credit Union

111 N. 2nd St • Alpine, TX 79830
(432) 837-5156

www.alpineavalanche.com

Come join us during these upcoming events!
Drink specials, live music, and more.
We look forward to seeing y'all there!

SR

SATURDAY OCTOBER 22ND

BRAXTON KEITH

10PM

@THE OLE CRYSTAL BAR

FREE ADMISSION

BOOS & BOOZE

SATURDAY

OCT 29TH

CASH PRIZES

SCARIEST GUY

& SEXIEST GIRL

\$2 SPECIALS

VAMPIRE & ZOMBIE JELL-O SHOTS

BIRCHLING LIGHT & Pilsner

TRIPLE MARGS CRYSTAL VARIETYS

OLE CRYSTAL BAR

410 E HOLLAND AVE

Made with PosterMyWall.com

SR

JACOB STELLY

AT THE OLE CRYSTAL BAR

SATURDAY

OCTOBER 29TH,

2022

11PM

9PM

LOBOS IN THE NIGHT

OPENING BAND: TEQUILA SOUND MACHINE

WEAR YOUR HALLOWEEN COSTUME

STUDENTS, ALUMNI & COMMUNITY ARE WELCOME.

FREE FOR ALL!



Honoring the Memory of Your Loved One

As a family-owned and -operated funeral home, we take our commitment to your family personally. We value your trust in us, and it is our honor to help you through your time of sorrow with compassionate service, professional guidance and a dignified tribute to your dear departed loved one.

Alpine Memorial FUNERAL HOME

CREMATIONS - PRENEED PLANS

Honor The Memories

Each service, unique and perfect in every way.

209 West Sul Ross, Alpine Texas | 432-837-2222
www.AlpineMemorialFuneralHome.com

Of Red-taileds and ridges: Spotted in Double Diamond South

While visiting a friend in Double Diamond South and walking from my car to the house, I spotted three Red-tailed Hawks gliding south across a ridge where a lone pinion stood. I lifted my binoculars and took a look. There were two nicely marked eastern-plumaged Red-tailed adults, and – a different bird.

Now, a birder's mind processes visual information rapidly. By size and shape, buteo registers immediately. Then two bright, rusty-red tails, dark brown backs and upper wing surfaces – adult Red-tailed Hawks.

The birds rose above eye level. Pale from below with brown belly bands and dark patagials. Two of the raptors were clearly adult eastern Red-tailed Hawks, no further analysis required. Buteo for the third bird as well, but no red tail.

The birder's mind clicks into detail mode. Way too big for Red-shouldered or Broad-winged, really about the same size as the Red-taileds. Immature Red-tailed? Immatures have fine barring on the tail in all morphs. This bird's tail is pale, unbarred, unbanded, unmarked except for some gray smudges near the tip, and the body is black, anyway. Not an immature Red-tailed, and the lack of distinct bars or bands on the tail also eliminates Rough-legged, Zone-tailed, and Swainson's hawks in all plumages.



BIRDS-EYE VIEW

by gail d. yovanovich



Harlan's Red-tailed Hawk in flight, from below and above.

Illustrations

by Gail Diane Yovanovich

Still from below, flight feathers pale with fine barring, wing linings appear black, as does the entire underside of the body. Wait, the body has some white on it, some light streaking on the chest, and the wing linings are mottled.

The birds dip again, soaring lazily below the ridge. The upper side is dark with none of the rusty tones that might indicate Ferruginous Hawk, and Ferruginous is a much larger bird anyway.

The black mantle shows the characteristic pale mottling that forms a V-shape across the back when the bird is perched – an adult dark morph Harlan's Red-tailed Hawk, and in textbook plumage!

About 20 seconds had passed since I first spotted this bird.

The three hawks continued to soar and glide along the ridge. The sun shone brightly in the late afternoon, a light breeze enhancing the thermals along the ridge that the birds rode so easily. I watched the trio at close range for a few minutes

more, mentally reviewing field marks and confirming my ID, and just plain enjoying the grace and beauty of these creatures.

Then, one by one, the three broke from the ridge and drifted southward and out of sight.

In almost three decades of birding, I had seen only two Harlan's Hawks. This was the second.

In the taxonomic order of things, Red-tailed Hawk falls in the genus buteo, a diverse group of medium to large raptors with heavy bodies, broad wings, and relatively short tails. Of the 12 buteo species in North America, the Red-tailed ranks as most common, widespread, and adaptable. They nest in every state in the Lower 48, Alaska, and in most of Canada, and winter throughout most of the U.S.

Seven distinct subspecies occur, each with complex and sometimes subtle plumage variations. By their second year, all except Harlan's shows the red tail for which the bird is named.

Family fun at the parade



Mom Kristin Rosas and daughter Ysela Rosas, 3, of Alpine were two of the many attendees who enjoyed the festivities and colorful family friendly parade of Our Lady of Peace Catholic Church in Alpine on Oct. 8. The two-day festival was designed to bring families and friends together in a fun, faith-filled weekend of food, live music, and entertainment.

Avalanche photo by Roxanne Hill

The Swifts: A musical family reunion

The Swifts, one of Alpine's most popular musical groups, will host a performance at the Holland Hotel on Wednesday, Oct. 26, by visiting singer/songwriter Michael Hearne. Starting at 7 p.m., the evening

will feature music from the Swifts followed by a set from Hearne.

Hearne is the cousin of Eden Hinshaw, whose soulful singing voice is one of the anchors of the Swifts' sound.

"I grew up in a very musical family," said Hinshaw. "All of us playing and singing together was a big part of growing up for Michael and me, and he has successfully gone on to make it his life's work."

GSM INSURORS OF WEST TEXAS
Alpine Texas
Bethany Ahern, Agent
432.837.7419
AUTO • HOME • BUSINESS • HEALTH • LIFE



MEDICARE OPEN ENROLLMENT IS HERE!

Medicare's Open Enrollment Period begins October 15th and ends December 7th.

This is the time to review your current coverage, compare it with other plan options, and make changes to your coverage for the coming year.

SHIP Certified Benefits Counselors from the Rio Grande Area Agency on Aging, will be available to assist Medicare Beneficiaries with reviewing their coverage options at the following locations:

Monday, October 24, 2022

1:00 PM - 5:00 PM

Ft. Davis Community Center
(Previously the Ft. Davis Outfitter Store)

601 Cemetery Road, Fort Davis, TX 79734

Tuesday, October 25, 2022

10:00 AM - 2:00 PM

Presidio Nutrition Center

1400 E. O'Reilly St., Presidio, TX 79845

Wednesday, October 26, 2022

10:00 AM - 2:00 PM

Sunshine House

402 E. Holland Ave, Alpine, TX 79830

Thursday, October 27, 2022

10:00 AM - 2:00 PM

Marfa Nutrition Center

101 N. Mesa St., Marfa, TX 79843

If you have any questions, you can contact us at (915) 533-0998 or 1-800-333-7082.

Don't forget to ask us about the Medicare Savings Program and the Low-Income Subsidy Program. If eligible, these programs can help to lower your out-of-pocket costs!

To better assist you, please bring the following information:

- Original Medicare card
- Photo ID
- Social Security card
- Proof of Income
- List of your prescription medications
- Other health plan information

*Additional information may be needed when applying for the Medicare Savings Program and the Extra Help Prescription Assistance program. Contact us for more information.

This is not a sales event. Benefits Counselors of the Rio Grande Area Agency on Aging, a division of the Rio Grande Council of Governments, are certified under the Health Information Counseling Advocacy Program (HICAP) and the State Health Insurance Assistance Program (SHIP) of Texas in order to provide unbiased information to help Medicare Beneficiaries make an informed decision about their health coverage.



Alpine Retirement Low income Housing

62 and over
1 Bedroom Units
All Electric



Subsidy accepted

To apply go to:

alpineretirementhomes.com

Or call: 432-837-2259



Affordable Connectivity Program
Helping Households Get Access to Broadband

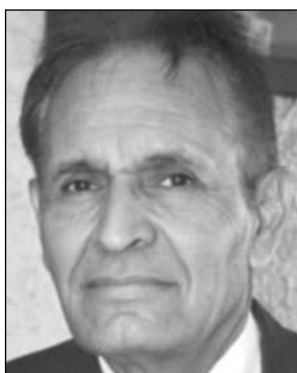
FC The Affordable Connectivity Program is an FCC benefit program that Congress created to help ensure that households can afford the broadband they need for work, school, healthcare and more. Learn if you qualify and apply at: AffordableConnectivity.gov

Candidate Q&A

Editor's note: In the contested races in Brewster County for the Nov. 8 general election, we asked the candidates a two-part question: What qualifications do you have for this position, and why do you think you are the best person for the job? Below are their responses.

Oscar Cobos

Brewster County Judge



As for the qualifications for the job, my expertise on confronting the issues impacting the health, safety, and welfare of the residents of Brewster County for years is a proven record.

The issue and proposal of drone-testing and research by Texas A&M with an indemnification clause the Alpine-Casparis Municipal Airport was facing would impact medical emergency flights, tourism, and Customs and Border Protection flights. We need to get resolutions passed in the City of Alpine, Brewster County, and Presidio

County against the proposal.

We also need to prevent the Texas Historical Commission from intervening against the property-rights, health, and safety of the elderly, and the restoration and building of homes with grants provided by GrantWorks and Brewster County.

I presented and took

the initiative with a petition for a new county jail with the concern for the health and safety of those incarcerated, detention officers, and the community.

I believe I'm the best person for the job because of my passion for the community. Public interests should always prevail over special interests. Oversight, transparency, and accountability is not a thing of the past as a public servant. I served on the Alpine Housing Authority, CASA, and Alpine Ministerial Alliance for years, and those have shown me the importance of working relationships for working solutions.

Greg Henington

Brewster County Judge



The position of county judge is an interesting title in many ways. The position does have its judicial side, but the majority of the work focuses on the fiscal and administrative management of the county. I feel I can bring a unique set of skills to the position that fulfills those responsibilities. First, a little bit about my background.

I graduated from Texas A&M in 1978 with a business degree in finance, and in 1981 with a Masters in business from the University of Dayton. After a stint

Fire and EMS. Recently, I headed the task force that helped Alpine EMS maintain its coverage for Alpine and north Brewster County until another provider could be secured. I also currently serve as treasurer of the Study Butte Water Supply Corporation, and as a director of the Big Bend Regional Hospital District.

One of my most favorite quotes attributed to Thomas Edison is, "Vision without execution is hallucination."

As your next county judge, you will have a qualified, experienced person to help execute the vision of the citizens of Brewster County.

Mark Chiles

Brewster County Commissioner Pct. 2



Howdy! I'm Mark Chiles and am running for Brewster County Commissioner, Pct. 2.

I was born/raised in South Texas. My family farmed and ranched. I was brought to the Big Bend in 1971 when my family bought property on Terlingua Ranch. I, like many others, fell in love with the land and people, and I returned to live here full-time as soon as I could.

I attended Texas A&M University before joining the workforce. While there, I learned and committed to follow the university's creed, "An Aggie does not lie, cheat or steal, nor tolerates those who do."

That sums up my personal priorities - God, family, and service.

I have varied professional experience including as a business owner in construction, water catchment sales, and insurance - all of which included managing/collaborating with diverse individuals in diverse arenas. I am skilled in planning, and negotiation and execution of projects. I am detail oriented and analytical.

As far as county is-

sues, there's a lot of work that needs to be done to tackle both current issues and the challenges that are coming as a growing tourist destination. I am most concerned about infrastructure needs (trash, water, housing for locals, fuel, EV charging stations, etc.), medical and emergency care, South County fire services, proper use of HOT funds, property tax appraisals, electric rates, South County Constable, keeping businesses open, and more.

Because of my background, moral integrity, professional experience, unbiased and fresh perspective, and passion for this county and its citizens, I believe I am the best candidate for this position, and would appreciate your vote.

Sara Colando

Brewster County Commissioner Pct. 2



As the current Commissioner for Pct. 2, I have four years of boots-on-the-ground experience in this job, during what has been an extremely difficult time for our rural community in particular and our country as a whole.

During the last four years, I've been working hard everyday to help our residents, and better myself as a public servant. I was on the EMS Task Force to find an emergency services provider for North County as quickly and efficiently as possible. I checked people in for Covid testing and vaccina-

tioner. We deal with a wide range of questions and issues that require us to be familiar with local government code, transportation code, tax code, health and safety code, water code, and so much more.

When it comes to choosing our elected officials, experience matters. As the most experienced candidate, I'm able to assist our residents more quickly and effectively. If I'm blessed to continue as commissioner for Pct. 2, I look forward to continuing our current projects and starting new ones that will make Brewster County a better place to live, work, and raise a family.

tion, I helped sort rubbish at every county cleanup day, and I attend every commissioners meeting well researched and prepared to discuss the agenda items at hand.

In addition to "on the job training," I've also exceeded the minimum continuing education hours required for county commissioners every single year I've been in office. There's so much to know in order to be an effective commis-

FRANK X. TOLBERT AND WICK FOWLER ←

55TH ORIGINAL TERLINGUA INTERNATIONAL CHAMPIONSHIP CHILI COOK-OFF + BBQ

NOV. 2ND - 5TH 2022 TERLINGUA, TEXAS

WED. NOV 2 The Music Begins!

THURS. NOV 3 The World's Championship Margarita Mix-Off | MID Bill's Verde Chile Cook-Off | Music

FRI. NOV 4 Last Chance Chili Cook-Off | 40th Annual Winternational World Championship B.E.A.N. Cook-Off | 30th Annual Winternational World Championship P.E.A. Off

SAT. NOV 5

FRANK X. TOLBERT-WICK FOWLER 55TH CHILI COOK-OFF

Art Fest and Texas Author's Tent | Annual Show Team Competition | FOUR DAYS OF MUSIC GARY P. NUHN | RAY WYLIE HUBBARD

MARK DAVID MANDERS | NIKKI LANE | THOMAS MICHAEL RILEY | LOS PINCHE GRINGOS | MATT CASTILLO | KATHRYN LEGENDRE | NATHAN COLT YOUNG

ALS

FOR TICKETS GO TO www.TerlinguaChiliCookOff.org

SPONSORS: LiftMaster, 2-Alarm Chili, LONGHORN Concierge Services LLC, Mrs. Renfro's, etc.

NO PARTISAN BS

Please join me on

October 23, 2022

at

Skelton's Runway

OUTDOOR LOUNGE & FOOD TRUCK TERMINAL

DRIVE-THRU STORE

from **3 - 6pm**

for complimentary food, refreshments and conversation about the future of Brewster County.

Greg HENINGTON

FOR COUNTY JUDGE

Paid political announcement by Greg Henington for Brewster County Judge

Astronaut visits Fort Davis



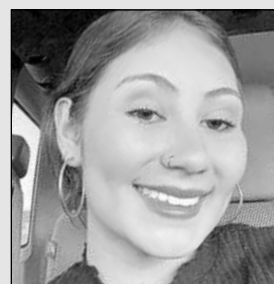
Former NASA astronaut and lunar pilot Charles M. Duke, Jr., speaks to a crowd at Fort Davis High School on Oct. 15. Fort Davis Baptist Church Pastor Paul Harst invited Duke, who is a personal friend and motivational speaker, to the event in Fort Davis. Duke landed on the moon in 1972 as part of the Apollo 16 lunar mission.

Photo by Paul Harst

SENIOR SPOTLIGHT Orly Holguin

In what activities did you participate in high school?

I participated in marching band my freshman, sophomore, and half of my junior year.



Orly Holguin

Who was your favorite teacher/coach, and why?

My favorite teachers I've had throughout high school would be Ms. Ramos and Ms. Parson. They always supported me in class, and were always someone I could rely on in my time of need.

What are your plans after high school?

After high school I plan to attend either the University of Texas-San Antonio or the University of Texas Health Science Center at San Antonio to pursue a career in nursing.

The Senior Spotlight is graciously sponsored by

We are very proud to support today's Youth!

BIG BEND TITLE, LLC

Serving the Greater Big Bend Area

PROTECTING YOUR LARGEST SINGLE INVESTMENT!
YOU HAVE THE POWER OF CHOICE IN CHOOSING YOUR OWN TITLE COMPANY.

Now serving Brewster, Jeff Davis and Presidio Counties

Alpine Office: 608 E. Holland Ave. Alpine, TX 79830 (432) 837-9172 jdca@sbcglobal.net
Fort Davis Office: 309 State St. - Hwy. 17 S P.O. Box 813 Fort Davis, TX 79734 (432) 426-3288
Marfa Office: 212 Highland Ave. Marfa, TX 79843 (432) 729-4299

Dan Platt, Jr.

Home Auto Commercial LIVINGSTON INSURANCE AGENCY Serving West Texas

903 W. San Antonio • Marfa
432.729.4306 • 281.785.5847
Dan@marfainsurance.com | marfainsurance.com

\$42 YEARLY SUBSCRIPTION MAILED TO YOUR DOOR

ALPINE AVALANCHE
432-837-3334 | www.alpineavalanche.com

2004 East Highway 90 | Alpine, Tx.
432-837-9597
www.holidayinnexpress.com

Live streaming
Sunday 10 a.m. • Wednesday 6:30 p.m.

801 East Brown graceinalpine@gmail.com
Pastors Mark & Shirley Williams • 432-837-9117
Facebook.com/gcfalpine

ALPINE SMALL ANIMAL AND LARGE ANIMAL SERVICES
Mary Dodson, D.V.M. | Zach Dodson, D.V.M.
3201 N. Hwy. 118, Box 7 • Alpine TX 79830
432-837-5416

Sunday Evenings 6:00-7:00 PM
Moss Creek Chapel 46043 State Hwy 118 Alpine, Texas
Phone: 432-244-8859

1200 Hwy 118 South • Alpine, TX 79830
432-837-0890 • Fax 432-837-0826
M-F 8am-5pm Closed for Lunch
Closing at noon on Fridays
Full Service Automotive Repair
Exhaust Installation
Lube & Oil Changes • Welding Repair

1901 W. Highway 90 Alpine, Texas 79830
432-837-5918

Rehabilitation & Sports Medicine Associates
Outpatient Physical Therapy
Sports Medicine & Athletic Training Services

ADVERTISE HERE!
Call 432-837-3334

Your Full Service Propane, Gasoline & Diesel Distributor for Brewster, Jeff Davis & Presidio Counties of West Texas

ALPINE OFFICE: 3001 N. Hwy 118 Alpine Texas • 432-837-2518
MARATHON OFFICE: 300A S. US HWY 385 Marathon, TX • 432-386-4422

YOUR "PEOPLE TO PEOPLE" BANK SINCE 1911
FORT DAVIS (432) 426-3211 • ALPINE (432) 837-1888
PRESIDIO (432) 229-5000

Bible Study 9:45am
Worship 10:55am & 6pm

office@fbcalpine.com
203 N. 4th St. • Alpine TX 79830 • (432) 837-2487

Devotional Page

A nonsensical gesture of love

BY MICHAEL WALLENS, PRIEST-IN-CHARGE
Big Bend Episcopal Churches

Sir Alec Guinness was one of Britain's most celebrated actors. I first knew him as Obi-Wan Kenobi in the original Star Wars trilogy. In his autobiography, Guinness described an odd event that occurred while he was walking through London.

He wrote, "I was walking up Kingsway in the middle of an afternoon when an impulse compelled me to start running. With joy in my heart, and in a state of excitement, I ran until I reached the little church there which I had never entered before; I knelt; caught my breath, and for 10 minutes was lost to the world."

This spontaneous sprint into a church happened not long after Guinness completed his journey from atheism to faith in Christ. He was at a loss to explain exactly what compelled him to kneel in the church and present himself before God. Guinness finally concluded that it was a "rather nonsensical gesture of love." That may be the best definition of worship I have ever found.

We live in an age of Christian pragmatism. The influence of business and industry has seeped into the church, and convinced many of its leaders that the church's mission ought to adopt the methods and metrics of the marketplace. Likewise, in many places, the Sunday

worship gathering is designed with customer feedback in mind. How many came? Did they like the music? Was the sermon helpful enough? How much did they give?

Of course, it's not just church leaders who are constrained by pragmatism. Many church members approach worship with a similar calculation. Did I receive enough from the church to justify giving up my Sunday morning?

Alec Guinness had it right. If we've encountered the holy, mysterious, and infinitely loving God then there will be things about our communion with God that defy usefulness and that are utterly nonsensical. This is true of love even on a human level. There is nothing practical about presenting my wife with a bundle of dying plants severed from their roots, but she's delighted when I give her flowers. And I am delighted by her delight.

Likewise, there may have been no practical reason for Jesus to turn water into wine at a wedding, or for God to put "every beautiful tree" in the garden for Adam and Eve to enjoy, or for God to adopt us into God's family and lavish love upon us. Maybe these were all simply expressions of His nonsensical love.

And maybe that's what worship is. It's what happens when God's delight in us inspires our delight in Him, sparking an endless loop of joy between Creator and creature, between Lover and beloved.

This Devotional and Directory are sponsored by these businesses who encourage us to attend worship services.

- ANGLICAN**
ANGLICAN CHURCH IN N. AMERICA
HOLY CROSS ANGLICAN
903 Fighting Buck Ave., 837-7170
www.holycrossalpine.org
Rev. Wyatt Boutwell
- APOSTOLIC**
CALVARY APOSTOLIC
South Hwy. 118, 837-1720
Javier Trevino, Minister
- ASSEMBLY OF GOD**
1802 Fort Davis Hwy., 837-2264
Pastor Clark Nussbaum
- FIRST HISPANIC ASSEMBLY OF GOD**
South 11th & Avenue I
Pastor Andrew Posadas
- BAHA'I**
BAHA'I FAITH
1202 N. 5th St., 432-538-7002
- FIRST BAPTIST**
4th & Sul Ross, 837-2487
- HILLSIDE BAPTIST**
East Hwy. 90, 837-5205
Pastor Brad McGuire
- BIG BEND CHURCH**
Hwy 118 @ Bee Mountain, Terlingua
55 @ 10:00
Worship @ 11:00
(432) 371-2243
- CATHOLIC**
OUR LADY OF PEACE
5th Street & Gallego Ave., 837-3304
Fr. Pablo Matta, Fr. Victorino Loresca,
Fr. Alfonso Coronado Sanchez
- ST. MARY'S CATHOLIC CHURCH**
211 W. San Antonio, Marfa
(432) 729-4694
Fr. Pablo Matta, Fr. Victorino Loresca,
Deacon Alfonso Coronado
- CHURCH OF CHRIST**
CHURCH OF CHRIST
2nd & Sul Ross Ave., 830-515-0591
10:45 a.m. Sundays
Wednesday Evening Service 5:15 p.m.
Curtis Wubbena, Minister
AlpinechurchTX.org
- MARFA CHURCH OF CHRIST**
North Austin Street
Marfa, TX 79843
Sunday 10:30 a.m.
MarfaChurchofChrist@gmail.com
- DISCIPLES OF CHRIST**
FIRST CHRISTIAN DISCIPLES OF CHRIST
6th & Sul Ross Ave., 837-2275
Pastor Lana Covington
- EPISCOPAL**
ST. JAMES' EPISCOPAL, ALPINE
Ave A & N. 6th St., (432) 837-4133
Santa Inez, Terlingua; Chapel of St. Mary
& St. Joseph, Lajitas
www.bigbendepiscopalmission.org
- JEHOVAH'S WITNESS**
JEHOVAH'S WITNESS KINGDOM HALL
1508 N. 5th St., 837-5115
- LUTHERAN**
REDEEMER LUTHERAN
15th & Holland, 837-5428
Pastor Mike Fickscher
- METHODIST**
FIRST UNITED METHODIST
208 E. Sul Ross Ave., 837-2286, 2280
Pastor Stephen White
- MORMON**
CHURCH OF JESUS CHRIST
OF LATTER-DAY SAINTS
Sunny Glen Road, 837-3779
- ORTHODOX CHRISTIAN**
ST. JONAH ORTHODOX CHURCH
405 E. Gallego
Services: 6pm Saturday
10am Sunday
bbsgary@yahoo.com
- PRESBYTERIAN**
FIRST PRESBYTERIAN
5th Street & Lockhart Ave., 837-2449
Pastor Rev. Bill Cotman
- UNITARIAN UNIVERSALIST**
UNITARIAN UNIVERSALIST OF THE BIG BEND
1308 N. 5th St
http://bigbenduu.org
- OTHER**
BIG BEND COWBOY CHURCH
E. U.S. Highway 90, 254-631-8582, 432-364-2822
Wendel Elliott, Pastor
bigbendcowboychurch.com
- GRACE CHRISTIAN FELLOWSHIP
801 E. Brown, 386-6203
Mark & Shirley Williams, ministers
www.facebook.com/gcfalpine/
- ST. LUKE'S WELCOMARY EPISCOPAL
Welcomes you.
Holy Communion 11 am Sunday
1102 North 5th Street, Alpine, 837-1653
Father Henry - Pastor
- ZEN MEDITATION**
Morning Glory Sangha
Rev. Jean O'Cullinn, Minister, 364-2462
Laura Belkin, 729-3063
6 p.m. Monday Nights
Unitarian Universalist Church 1308 N.5th St.

Send updates to:
editor@alpineavalanche.com

2607 West US Hwy. 90 • Alpine, Texas
432-837-7344

BEHIND EVERY PROJECT IS A
True Value
MORRISON HARDWARE
SERVING ALPINE & THE BIG BEND SINCE 1928

301 N. 5th St
432-837-2061
ALPINE, TEXAS 79830
www.morrisonhardware.com

Melissa Gonzales
Restaurant General Manager

2301 E. Hwy. 90
Alpine, TX 79830
432-837-5819

7 DAYS A WEEK STARTING AT 11AM

Services Provided:
• Wire Transfers • Money Orders
• Phone Cards • ATM

WESTERN UNION

SKINNER'S LLC
DRILLING & WELL SERVICE
Water Well Drilling & Complete Well Service
432-837-2497
Serving you since 1978!
Walter Skinner Master License 2838 AI

Sonic Fountain Drinks
32oz. Drinks 99c
7-10am Mon.-Sun.
1/2 Price Happy Hour!
2-4 pm Every

602 Holland Ave. E
Alpine, Texas 79830
432-837-5521

KC's QuickMart & RV Park
• 30/50 Amp Full Thrus
• Tent Sites
• Restrooms, Laundry
• Walking Distance to:
• Pizza Hut
• Penny's Diner
• All Aboard America Bus Stop
2303 E. Hwy 90 - Alpine
432-837-5497

I can do all things through Christ which strengthen me.
~ Philippians 4:13

First United Methodist Church
208 East Sul Ross Avenue
Alpine, TX 79830-4722
(432) 837-2286

Holy Cross Anglican Church
Holy Communion Sunday 10:30am
Wed. Evening 6:00pm
Wed. Evening Bible Study 6:30pm
Pastor Wyatt Boutwell

WEST TEXAS ROUNDUP

ABSTRACT AND TITLE



410 N. Fifth Street
P.O. Box 418
Alpine, Texas 79830
Office 432-837-5801
Fax 432-837-3509

Kristin@ellysonabstract.com • www.ellysonabstract.com

BOOKS

RE-READS USED BOOKSTORE

INSIDE THE ALPINE PUBLIC LIBRARY AT
805 W. AVENUE E.
Shop ReReads online at
AlpinePublicLibrary.org

DENTAL



Dr. Anusha Kotha, DDS
General Dentist

310 S. Allen Ave.
Monahans, TX 79756
Tel: 432-943-5555

402 E. Austin St
Kermit, TX 79745
Tel: 432-586-2911

AIR/HEAT

ACTION HEATING AND COOLING

SERVICING TRI-COUNTY AREA
Central heat and air - furnaces - mini splits
Installing American Standard Units
Installing Samsung Mini-Splits
Repair available for most brands
Preventive contracts available
Call or text 432-386-0275
Actionshot2@gmail.com
LICENSE: TACLA27924E



BODY SHOP

BEST BODY SHOP

506 W. Holland Ave. • Alpine • 432-837-7275
Towing Available • Estimates
Insurance Work Accepted
CALL FOR AN APPOINTMENT



Family Owned & Operated
**DWAYNE AND
DYLAN MURRELL**

Served Alpine Since 1995 • Over 30 Years Experience

AUTO



Most Major Brands of Tires
Complete Muffler & Tailpipe Repair • Brakes • Shocks
Struts • Front End Alignments
24 Hr. Emergency Service
2601 E. Hwy 90, Alpine • 432-837-5030

REMIE'S BODY SHOP, INC.

Complete Auto Repair & Glass
Insurance Claims
Grille Guards, Hail Repair • Paintless or Conventional
CALL FOR ESTIMATES • PICK-UP & DELIVERY AVAILABLE
800 EAST 6TH • FORT STOCKTON 79735 • 432-336-5181 • 432-336-6931 FAX
RAMIRO RAMOS & RAMSEY RAMOS

FURNITURE



MITCHELLS Furniture & Flooring

Family owned for 30 years.

509 W. Holland Ave. Alpine Tx.
mitchellsfurniture@gmail.com
432-837-0070

AUTO

XPEL Paint Protection Film
Window Tinting • Auto Storage
Auto Detailing • Ceramic Coating

Call for Appointment
432-837-9789
511 W. Holland • Alpine

THE STABLE
PERFORMANCE CARS

CLOCK REPAIR



DML Clocks

2003 Fort Davis Hwy.
Alpine, Tx 79830 • 432-837-5330 • 386-6777
• Expert Clock Repair, All Types
• Pocket Watch Repair & Cleaning
• Watch Batteries Installed
• Free Pick Up & Delivery In our Area
• Estimate Before Repairs, Insured
Call Today and Get Your Timepiece Repaired

BAIL BONDS

Freedom Bail Bonds

432-837-3293

24 Hour Service • Major Credit Cards Accepted

DRUG STORE

CITY DRUG STORE

Sherri Molina, PharmD
Pharmacist in Charge
202 E. Ave. E • Alpine, TX 79830
432-837-2252
Hablamos Espanol



HOME HEALTH

Your only locally owned and operated
Home Health Care Agency since 2011
AGAVE HOME HEALTH
Serving the communities of
Alpine, Fort Davis, Marathon, Marfa,
Presidio, Redford & Shafter.
432-837-5907
www.agavehomehealth.com
Our skilled services are customized to each individual's health care needs.
We offer the following services in the privacy of your own home:
Skilled Nursing Physical Therapy Occupational Therapy Speech Therapy

BANKING

Lobby & Drive-Up Services Available!

Proudly Serving Our Community
ALPINE BRANCH
101 East Avenue E | Alpine, TX 79830
432.837.3375



MEMBER FDIC EQUAL HOUSING LENDER NMLS 410435 | 877.493.7862 | WTNB.com

HIGHLAND DRUG



Jill Jahn
PharmD
Owner/Pharmacist in charge

Monday-Friday
8 am-6 pm
Saturday 9 am-Noon

504 East Avenue E | Alpine, TX 79830
(432)837-3931

HOTELS



2271 West Interstate 10
Fort Stockton, TX 79735
(432) 336-9600

www.fortstockton.hamptoninn.com



2115 Interstate 10 W.
Fort Stockton, TX 79734
432-336-7000
800-780-7234
www.bestwestern.com

LIQUOR



Great selection
of liquor including
bourbon, gin,
and agave spirits

OPEN
Wednesday-Saturday
next to Brick Vault BBQ

TO ADVERTISE YOUR BUSINESS CALL 432-837-3334
OR EMAIL PUBLISHER@ALPINEAVALANCHE.COM

Avalanche Classifieds

ERRORS - Please check your ad the first day of publication. We are only responsible for the first incorrect insertion of any ad. Publisher's liability for damages resulting from errors in any advertising that it has agreed to publish shall be limited to the amount actually received by the publisher in consideration for its agreement to publish the advertisement in ques-

ALL MAJOR CREDIT CARDS ACCEPTED



PAYMENTS: MUST BE MADE IN ADVANCE • CASH • CHECK • CREDIT

\$10
FOR 20 WORDS
30¢ FOR EACH ADDITIONAL WORD

HOURS - You may place your ad in person at 118 N. 5th St., Alpine, TX 79831 from 8 a.m. to 5 p.m.

may be cancelled for the next publication until 12:00 (noon) on the Monday before publication.
ACCEPTANCE - The publisher wants to do everything that is possible within the confines of good taste and legal constraints to help you advertise your product or service to the best advantage. We reserve the right to edit or reject any copy or insertion

that does not meet our standards of acceptance. The Alpine Avalanche does not run ads for anyone whose balance on previous ads is not current.
PAYMENT - All Classified Ads must be paid in advance.
EMAIL - Send your Classified Ads to the Alpine Avalanche by email at bookkeeping@alpineavalanche.com.

tion. It shall not be responsible for any consequential damages suffered by any party.

DEADLINES - All ads are due in the office by 12:00 (noon) on Tuesday.

Call 432-837-3334.
CANCELLATIONS - All ads

REAL ESTATE

604 n. 6TH St. East, Marathon. ½ a city block in Marathon. Call 325-668-1390

MOBILE HOMES FOR RENT

Mobile homes and spaces. Close to Sul Ross University. Frontier Mobile Home Village. 1102 N. 9th St. trailer #35 Alpine. Call 432-837-2736

FOR RENT/LEASE

FORT DAVIS HOUSE FOR RENT, \$1600 per month. 432-249-0030

Rentals Available. Call Rhonda Cole 432-837-5539

102 Baeza Circle - Fort Davis, 2 BR/1 Bath, rent \$1,000.00/mo + deposit 432-249-0293

FOR RENT/LEASE

Information concerning available rentals at clark nussbaum realty.com

407 E Lockhart #5 Studio Apartment for Rent Rent \$595.00 /mo + Deposit 432-249-0293

101 Baeza Circle - Ft Davis, 2BR/1 Bath, Rent \$895.00 / mo + Deposit, 432-249-0293

HELP WANTED

Hampton Inn is seeking dedicated employees to fill night audit. Excellent pay and benefits. Please apply in person at 2607 West Highway 90.

Holiday Inn Express is seeking dedicated employees to fill front desk, night audit, and housekeep-

HELP WANTED

ing positions. Please apply in person at 2004 East Highway 90.

Help wanted - Assistant Ranch Manager & Housekeeper/Part time cook - We have a unique opportunity for a couple to work/live on an 11,000-acre ranch near Langtry, Tx. Salary of \$35-40K per year for Assistant Manager. Salary and/or bonus awarded as warranted. Housekeeper/Cook salary of \$20K per year. Salary and/or bonus awarded as warranted. Benefits include Disability insurance, Health insurance and Paid time off. Three-bedroom manufactured home fully furnished. All utilities including electricity, propane, water (well), Direct TV. All living expenses covered,

HELP WANTED

except personal food and personal vehicles. Duties for the Assistant Ranch Manager would include exterior house, lawn/garden/landscape and pool maintenance, grading roads and river edge. Grading roads and river edge and other duties assigned by the Ranch Manager. Assistant Ranch Manager must have prior ranching experience. Computer skills and bilingual English/Spanish preferred. Contact Robert Bowden at Robert.bowden@4MHRLogistics.com or 210-820-8645.

WANT TO BUY

I buy cast iron skillets please text or call 512-963-7533

Want to buy old Colt pistols and

WANT TO BUY

old Winchester Lever Action rifles. Daytime phone #: 432-294-2094. Nights/weekends: 432-364-2234

HOUSEKEEPER

Looking for housekeeper, weekly for large three-bedroom home in Alpine. Duties includes general cleaning, beds, fans, baseboards, bathrooms, appliances and more. Please call 512-963-7533. references necessary.

GARAGE SALE

Yard Sale - Saturday - Sunday, 9 am - 5 pm. 107 Canyon Drive (Sunny Glen) Alpine. Ranch family sale, tools, tack.

Hillside Rummage Sale - Final three days of Hillside Rummage Sale

GARAGE SALE


this Thursday and Friday, NOON to 6 p.m., and Saturday, 8 a.m. to 2 p.m. Items on ALL tables half price, including books. All clothing and shoes on racks (Not

GARAGE SALE

Vintage) - TWO BAGS for \$1!! Reduced prices on many other treasures including furniture! Call Karen McGuire at 432-386-3071 for more information!

Action Heating and Cooling is hiring.

Starting wage is \$18 to \$20 based on experience. Will train. Service techs earn hours with the state to become licensed. Great work hours with overtime available (if wanted). Great opportunity for the newly high school graduate.



Call 432-386-0275

TWIN PEAKS is hiring a Fulltime assistant manager trainee starting at \$12.50 an hour.

After completing a minimum of 90 days training and successfully meeting a series of benchmarks, a promotion to Assistant Manager and a raise to \$15.50 will be given.

Please apply in person.



2609 West Highway 90 in Alpine, Texas

Follow us on Facebook

WEST TEXAS ROUNDUP

MOVING

FRANK'S MOBILE HOME MOVERS



432-553-4628
FORT DAVIS, TEXAS 79734
FRANK A. GAUBLE

REAL ESTATE

CARPENTER REAL ESTATE
Established 1947 • Alpine, Tx



REAL ESTATE | LAND | RANCH | HOME | INVESTMENT
www.legacybrokersgroup.com | 432-837-3325

SEPTIC SERVICES

DO NOT WAIT until your septic system shows signs of failure to have your septic tank pumped out!

Waiting can mean complete clogging and an expensive septic system repair bill. Periodic septic tank pumping is far less costly than septic tank repair or replacing the entire septic tank system. We recommend septic system cleaning every 2-5 years. Remember: Maintenance is much cheaper than replacement!



[432] 294-0758

B & S SERVICES is the BEST in Portable Sanitation
We have Special event rentals, monthly construction rentals, handicapped rentals and wash stations. We also service holding tanks.
bstoilets@hotmail.com

PROPANE

WTG FUELS, INC. GAS CARD



GAS | DIESEL | PROPANE
ALPINE | 432.837.2518 | MARATHON 432-386-4422

SPA

Beauty Bar

432-837-4101 | Cell: 432-294-0351
201 E. Holland | Alpine

Angie Portillo
HAIR STYLIST

REAL ESTATE

Barbara Trammell, Broker Listings Wanted
432-371-2430 - P.O. Box 356 Terlingua, TX 79852

BIG BEND REALTY

TERLINGUA RANCH * TERLINGUA GHOSTOWN STUDY BUTTE * SOUTH COUNTY AREA UNDEVELOPED RECREATIONAL * HOMESITE RESIDENTIAL * COMMERCIAL

FOR ALL YOUR NEEDS - LET'S TALK!

TIRE DISPOSAL

Tire Disposal

Legally dispose of scrap tires!

(TCEQ Permitted facility). Fees: \$8/semi tire and \$6/auto, pickup, and trailer tires when delivered to West Odessa, TX. No super singles, agriculture or machinery tires. Add \$4/tire extra for pick-up service in Ft. Stockton. & \$6/tire extra for pick-up service in Marathon & Alpine. (50 tire minimum for pick-up service) Open daily during daylight hours. Cash, cards, checks okay.

Call 432-614-1865 for more information.

WELL SERVICE

SKINNER'S DRILLING & WELL SERVICE, LLC
Serving You Since 1978

WALTER SKINNER TDLR Master Lic. #2838 AI 432-837-2497

John Skinner Lic. #59655 KLPW Thomas Skinner Lic. #59401 LPW

2300 W. Mosley Loop, Alpine, TX
www.skinnerdrillingbigbend.com

FindARanch
OUT WEST

Specializing in Ranch & Rural Properties in the Big Bend & Highlands of West Texas

(888)729-4424 • (432)249-0401
P.O. Box 726, Marfa, TX 79843
Cleat L. Stephens, Broker
cleat@findaranch.com
FindARanchOutWest.com

TREATING YOURSELF TO NEW CLIENTS?
WE HAVE YOU COVERED!

the ALPINE AVALANCHE
Serving the Big Bend and Davis Mountains County since 2001

GIVE US A CALL TODAY & RESERVE YOUR SPACE!
432-837-3334

Advertising really works!
Call for details!

432.837 3334

or visit us online at

www.alpineavalanche.com

PORTER'S
 SINCE 1945

This is our story



Now hiring multiple positions within both Alpine and Fort Davis Locations. Flexible Hours and School Schedule. Please apply at any of our locations in person.

ALPINE, TEXAS
 101 E. SUL ROSS AVENUE
 104 N. 2ND STREET
 (432) 837-1182

EOE.

Catch each Friday Night wrap up in the **Alpine Avalanche!**
 Exclusives from coaches, players and fans.

ALPINE AVALANCHE

BBT

AVAILABLE POSITIONS

Technology Service Associate (Terlingua)

Are you looking for a career as a Service Technician who wants to provide Big Bend Telephone's exceptional customer service all while living and working in the beautiful Terlingua/Lajitas area. Then BBT is the place for you to grow and develop with the ever-changing communications industry and is committed to providing stellar customer service and first-rate technology. The entire Big Bend team plays a role in developing strategies to increase the sales and usage of our products, services and equipment while reinforcing our brand. The ideal candidate will be technically inclined, have a strong desire to succeed and capable of delivering world-class customer service. The job entails networking comprehension, installation and troubleshooting of fixed wireless, fiber to the home, Wi-Fi services, IP Phones, and other customer premise services as well as copper loop installation, repair and troubleshooting. Position requirements are Minimum High School Diploma or GED equivalent with 2 years of experience in a related field. Applicants must possess a valid driver license, have a good driving record and be insurable under the company's insurance policy. There is a \$1,000 signing bonus for new hires (terms and conditions apply) and long-term career potential for the right motivated person.

For more information we invite you to visit <https://www.bigbend.com/about-us/employment/>

Email resume to: HR@bigbend.com
OR Mail a current resume to BBT, Attn: HR
808 N. 5th St.
Alpine, TX 79830
Please no phone calls.
EOE Employer
Veterans are encouraged to apply
**Terms and Conditions apply.*
BBT participates in E-Verify and promotes a Drug-Free Workplace.



EMPLOYMENT OPPORTUNITIES

Village Farms is seeking a detailed oriented individual to join our team as Shipping/Receiving Clerk for our Marfa 2 location.

Responsibilities include loading and unloading, forklift operation, preparation of shipping documents, verify deliveries, maintain warehouse and other general duties. Requirements: Must be willing to work flexible hours including evenings, weekends and holidays, ability to work independently, verbal and written communication skills, working knowledge of computers and forklift experience preferred. Must be able to pass a pre-employment drug screen.

Interested candidates can call **(432)729-3071 Ext. 607** for more information. Resumes should be emailed to ebaeza@villagefarms.com or faxed to **(432)375-6241**, applications are also available at Village Farms Security Stations 3 Miles N. Hwy 17 Marfa, TX or 3 Miles S. Hwy 17 FT. Davis, TX.



GETTING married?

Share your excitement! Announce your engagement & then all the wedding details in *The Alpine Avalanche!*

www.alpineavalanche.com/site/forms



TRANSPecos BANKS

TransPecos Banks continues to grow and needs additional hard working, dedicated employees to fill the following positions. All positions require a high school diploma or GED. Credit and background checks will be performed.

UNIVERSAL TELLERS - We are hiring part time tellers for our Alpine and Marathon locations. Must be customer friendly, and able to work quickly and accurately with numbers. Experience a plus.

Compensation based on related experience.

Please apply at www.tranpecosbanks.com
 Equal Opportunity Employer.
 Member FDIC.

TransPecos Banks,
 P. O. Box 9600, Alpine, Texas
 432-837-0094

☆☆☆☆☆☆☆☆

LOOKING
 for Full time or part time work?



WE CAN HELP!
 We are currently looking to hire **MORNING SHIFTS.**

6am-2pm or 8am-5pm

We can accommodate any schedule you have

- Starting pay - \$10/ per hour
- Closing pays 10% more per hour
- 5% weekend differential
- Benefits- Health and 401K
- Overtime Available
- Paid Vacation
- College Assistance
- Flexible schedule
- Uniform provided
- Discounts on meals

Now Hiring

- **FULL TIME IT**
 SPECIFIC SOFTWARE, PREFER MEDICAL SOFTWARE EXPERIENCE
- **MEDICAL DOCTOR**
- **FAMILY NURSE PRACTITIONER**
- **FULL TIME- NURSE SUPERVISOR**
- **DENTIST**
 Must be licensed in the State of Texas, Alpine Location
- **PART TIME - DENTAL HYGIENIST,**
 Alpine Location
- **PROGRAM COORDINATOR -**
 Collaborate with team to ensure program process and outcomes.
- **HUMAN RESOURCE REP.**
 (Bachelors required)
- **STAFF ACCOUNTANT**
 Alpine Location
- **FULL TIME MEDICAL FRONT DESK RECEPTIONIST**
- **FULL TIME DENTAL FRONT DESK RECEPTIONIST**

Applications maybe picked up at **1605 N. Ft. Davis Hwy.**
 Please call us before arrival **432-837-4812**

The Brewster County Central Appraisal District is accepting applications for the entry level position of **Property Tax Appraiser.**

Responsibilities include office and fieldwork associated with the appraisal of residential, commercial, rural, and personal property, analysis of market sales, and application of mass appraisal techniques. A valid Texas driver's license and excellent driving record are required. This position will require registration with the Texas Department of Licensing and Regulation and schooling (5-years) to obtain the required RPA designation. Applicants must have excellent organizational skills, computer skills, mathematical skills, and effective communication and people skills. A pleasant, positive personality and good work ethic are necessary. Applicants must have a high school diploma or equivalent and knowledge of the Texas property tax system is a plus.


Benefits include health insurance, retirement plan, paid vacation, and sick leave. Salary is contingent upon education, experience, and qualifications.

Interested applicants may apply at 107 West Avenue E between the hours of 9:00 a.m. to 12:00 p.m. and 1:00 p.m. to 5:00 p.m., Monday through Friday. No phone calls please. All applications must be received by Friday, October 28, 2022 to be considered.

(Brewster County Central Appraisal District is an Equal Opportunity Employer.)


MAINTENANCE (CUSTODIAN) CREW

- Basic duties:
- Will keep lobby, back storage, washing machine/mop sink area and kitchen areas clean and neat.
- Collect trash from lobby, kitchen and outdoor containers and dispose of same in dumpster. Keep area around trash and cardboard dumpsters as clean as possible.
- Wash towels and prepare towel bucket for use in front counter.
- Check and clean bathrooms on a regular (hourly) basis.
- Break up and compact cardboard as needed and put in outside blue cardboard dumpster
- Correct any hazardous or unsafe condition observed or notify on-duty manager of the problem
- Assist with truck deliveries as needed. Check freezer and walk-in refrigerator for temperature check, neatness and cleanliness.
- Starting pay is \$13.00 Per hour



i'm lovin' it

Text "mcdworksforme" to 36453
Mcdonalds.com/careers
 900 E. Avenue E Alpine Texas



PREVENTATIVE CARE HEALTH SERVICES

For info, please call **432-837-4812**
 Applications can be picked up at our locations or online at: pchsmedclinic.org

**COME BY TODAY FOR THE
SPICY OR CRISPY
CHICKEN
SANDWICH COMBO**



McDonald's
i'm lovin' it
900 E. Avenue E
Alpine Texas

Scare up some treats this Halloween

From Mummy Dogs to sweet treats, you can easily make your Halloween gathering scare off the competition. When one thinks about Halloween, you think costumes and trick or treating, but some folks go all out and host a Halloween party. If this is on your agenda this all hallows eve, I've scared up a couple of



ideas to make your get together the spookiest in the neighborhood.

In a departure from the traditional sweetness that we tend to associate with Halloween, those cloth laden corpses indicative of ancient Egypt are the way to go. Using hot dogs, crescent roll dough, American cheese and a little ketchup and mustard, you can preserve your title of spookiest neighborhood treat maker with these cute mummy mimics.

As for keeping that spookiness on point, whip up a batch of Ghostly Cupcakes. These cupcakes will scare off the competition by using melted chocolate chips to decorate them with a



ghostly countenance. So make your Halloween more fearsome than ever with these delightfully ghoulish recipes that are sure to please even the most solid party guest.

Questions, comments, or suggestions? Contact Kara at foodie9372@gmail.com.

Mummy Dogs

- Ingredients:**
- One 8-ounce tube crescent dough
 - 8 bun-length hot dogs
 - 1 slice white American cheese
 - Ketchup and/or mustard

Directions:
Preheat the oven to 375 degrees. Line a rimmed baking sheet with parchment paper or a silicone mat.

Place the wrapped dog on the prepared baking sheet, and repeat with remaining dough and hot dogs. Bake until golden brown, about 15 minutes.

Open the crescent dough tube, and unroll the dough onto a work surface. Pinch together the seams to create a rectangle. Cut the dough lengthwise into eight long strips.

While hot dogs bake, use the narrow end of a wide piping tip to punch out 16 small rounds of cheese for the mummies' eyes.

Take one hot dog and one strip of the dough, and wind the dough around the hot dog while pulling gently to stretch the dough. Crisscross the dough every so often so it looks like mummy wrappings. Near the end of the hot dog, leave a narrow strip of hot dog exposed so you can add eyes after baking.

Remove the hot dogs from oven. Using a toothpick, smear some ketchup on one side of each cheese round and "glue" it to the open area of the hot dog to create two eyes. Using the same toothpick, put a dab of ketchup or mustard in the center of each eye to create a pupil.

EL PAPALOTE
PLANT NURSERY & GIFT BOUTIQUE
2000 W HWY 90 • ALPINE, TX
432-272-8090




- PLANTS
- GIFTS
- CACTUS
- KNIVES
- METAL ART
- ESSENTIAL OILS
- SOUVENIRS
- ROCKS
- LOCAL GOODS
- FOSSILS
- HANDMADE ITEMS
- SOAP
- CANDLES
- LOTIONS

SOMETHING FOR EVERYONE

**NOW HIRING
BANK TELLERS
PART AND FULL-TIME**

Alpine Branch

Please send resume and cover letter to:
AGallego@WTNB.com

APPLY in person at WTNB
101 East Avenue E | Alpine, TX 79830

Competitive Compensation Package

WTNB is a community bank with a pleasant, growth atmosphere and includes excellent benefits. Benefits include health and vision insurance and a matching 401k plan.

WTNB also offers a very generous Paid Time Off (PTO) Plan which begins accruing upon an employee's initial hire date, along with Federal Bank Holidays.

WTNB
West Texas National Bank™

MEMBER FDIC EQUAL HOUSING LENDER 877.493.7862 | WTNB.com

WTNB is an Equal Employment Opportunity Employer

**7TH ANNUAL
WILD WEST NIGHT
OCTOBER 22, 2022
6PM - 9PM**

**Chuckwagon
Dinner**

BAKE OFF

Silent Auction

**THE LAST CALL
&
Craig Carter
and the Spur of
the moment Band**



**Photo
Booth**

KIDS GAMES



SUNSHINE HOUSE - 402 EAST HOLLAND AVENUE IN ALPINE