

## Fresh, new face for Porter's in Alpine

BY BETH PEABODY  
Contributing Writer

Thanks to the Porter family legacy, the basic needs for the Big Bend area have been provided for generations now. As such, Alpine has become a hub for surrounding towns and travelers.

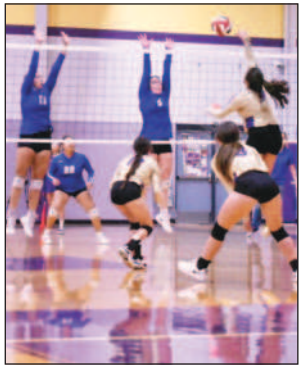
In 1945 at the end of World War II, Ray Porter moved from Oklahoma to Frankel City, and began a family-owned and operated grocery store called Modern Foods. Providing food and customer service through hard work was a way of life. Seventy-seven years and 10 locations later, that has not changed.

Ky Ellison, a 15-year employee, handles public relations and marketing for Porter's.

"We take our responsibility to serve seriously, heavily investing in people and the community to see them succeed. We

See PORTER'S • 6

## INSIDE



FEATURED

See sports on page 8.

## Rainfall totals at Alpine-Casparis Airport

2022 . . . . . 11.98"  
September . . . . . 2.31"



## Burn Ban OFF

INDEX 16 pages

Opinions . . . . . P.4  
Sports . . . . . P.8  
Classifieds . . . . . P.10-12

PLEASE REMEMBER TO THANK A VETERAN, A MEMBER OF THE ARMED FORCES, OR A LAW ENFORCEMENT OFFICER EVERY DAY.



# City approves military monument

Mural outside American Legion Post 79 in Alpine has an artistic rendition honoring women in the military.

Avalanche photo by Roxanne Hill



BY ROXANNE HILL  
Staff Writer

The City of Alpine held its regularly scheduled city council meeting on Sept. 20, and a proposed monument honoring women in the military, code enforcement issues, and a strategic plan for the city drove the discussions.

City Manager Megan Antrim introduced an action item to approve the American Legion Auxiliary Club placing a monument to honor women in

the military at Veteran's Park directly across from the Legion post at 306 West Sul Ross Avenue.

"There is actually a monument already in this park, so they would be adding to it," said Antrim. "This would be the first monument in Alpine representing women in the military."

The council then voted unanimously approving placement of the monument.

Next, Director of Building Services Andrew Devaney pre-

sented a report to the council, noting that high weeds will be the focus for the next several months, and citations had been issued. Devaney said, "From what I hear there was a lot more rain than what we were anticipating. We are trying to update our codes, and we will come to you all for approval."

Finally, Antrim discussed an information only item regarding a strategic plan for the city,

See MONUMENT • 6

# Homecoming traditions alive in Alpine



It was both a surprise and a great way to celebrate and wrap up the Alpine High School pep rally held on Sept. 16 as students Iden Lujan and Novah Carrasco paused for a photo in the gym. Lujan, a Fightin' Buck varsity football player, asked Carrasco, a Lady Bucks varsity volleyball player, to the Homecoming Dance, where she received a gift box and other goodies to celebrate the occasion.

Avalanche photo by Roxanne Hill

# Marfa school seeks to preserve cherished memories

BY ROXANNE HILL  
Staff Writer

Hispanic Heritage Month kicked off on Sept. 15 and runs through Oct. 15, and is a time to celebrate the unique history, culture, and contributions for this segment of the population.

The Blackwell School of Marfa, a public school that educated generations of Mexican American children from 1909-1965, serves as a stark reminder of a time when school segregation permeated everyday life in Texas. Yet it remains a treasured community center, bringing together a diverse group of people who added to its rich history.

Gretel Enck, president of the Blackwell School Alliance, an organization that aims to

preserve and restore the school's historical significance, was honored to share the positive contributions that students bring to this day.

The school's namesake, Jesse Blackwell, was principal for 25 years, and contributed in many ways to the success of the students who were later integrated with their Anglo counterparts at non-segregated Marfa High School.

"It's interesting because some people didn't know they were segregated," said Enck. "They came here, they were really sheltered from the big world, but when they went to high school, they realized what the town was really like - why they always had old books with other people's names on

See HISPANIC • 6



Mario Rivera stands next to his Marfa High School Class of 1961 graduation photo.

Avalanche photo by Roxanne Hill

**Alpine Memorial FUNERAL HOME**  
CREMATIONS • PRENEED PLANS  
*Honor The Memories*  
EACH SERVICE, UNIQUE AND PERFECT IN EVERY WAY.  
209 West Sul Ross, Alpine Texas | 432-837-2222  
www.AlpineMemorialFuneralHome.com

**MONICA WOODALL**  
900 E. HOLLAND AVE. • (NEXT TO BEALLS)  
ALPINE, TX 79830  
432-837-5631  
LIKE A GOOD NEIGHBOR STATE FARM IS THERE.  
STATE FARM INSURANCE

*Lucy's Christmas Cottage*  
106 W. Lockhart Behind  
*True Value*  
A year round Christmas store  
featuring unique decorations and home accents

**Double K FLOWERS & GIFTS**  
DEBORAH PRUITT  
OWNER  
o: (432) 837-2227 409 E. Ave. E • Alpine, TX  
c: (432) 940-9150 deborahpruit50@yahoo.com

**TRANSPecos BANKS**  
*Texas Banking at its Best.*  
402 W Holland Ave, Alpine, TX 79830  
432-837-0094 | www.transpecosbanks.com  
FDIC

**Lobby & Drive-Up Services Available!**  
Proudly Serving Our Community  
ALPINE BRANCH | 101 East Avenue E | Alpine, TX 79830 | 432.837.3375  
**WTNB**  
MEMBER FDIC EQUAL HOUSING LENDER  
NMLS 410435 | 877.493.7862 | WTNB.com





As a family-owned and -operated funeral home, we take our commitment to your family personally. We value your trust in us, and it is our honor to help you through your time of sorrow with compassionate service, professional guidance and a dignified tribute to your dear departed loved one.

## Alpine Memorial FUNERAL HOME

CREMATIONS • PRENEED PLANS

*Honor The Memories*

Each service, unique and perfect in every way.

209 West Sul Ross, Alpine Texas | 432-837-2222

www.AlpineMemorialFuneralHome.com

# Remembering the 1972 experience

BY JERRY SOTELLO  
Guest Columnist

To many of us it seems like just yesterday, but it was 50 years ago this fall that the 1972 Alpine Fightin' Bucks experienced a magical season. The Bucks were coming off a year in which the previous years' seniors lost in a Bi-District playoff game to the Ozona Lions and All State running back Ruben Tambunga.

Excitement was high that summer. Many of the soon-to-be seniors got together every day and ran and ran and ran. We wanted to be in our best shape for our new head coach, Ken Scott. We also remembered our eighth grade year when we didn't win a single game. We didn't want that to happen again.

We fast forward to the first half of the season. Our fifth game of the year was at home at Jackson Field. The Reagan County Owls shut us out 21-0, and we were at 2-3 for the season. To say the least, we were a

bit disappointed. So we had an off week to prepare for district play.

What a difference when we opened District competition! The least number of points we scored in any dis-

trict game was 40 if my faded memory is correct, and we didn't allow a single score. Yes, we shut out every team.

So it was on to the post season as District champions. We beat Coaho-

ma 14-0 in Bi-District. Next up was Lubbock Cooper. I can't remember the final score, but we beat them handily. The third round of the playoffs pitted the Bucks against Floyd-

da. Again, we dominated the game to take the victory, 20-0.

So for the first time in Alpine High School history, the Fightin' Bucks were going to the semi-finals in Class AA. The

opponent? A Rockwall team that averaged 240 pounds on the offensive line. Our biggest player was 200 pounds.

It was a frigidly cold night at San Angelo Stadium, and we gave every ounce of effort against a team that every so-called expert said would embarrass us. When the smoke had cleared, it was a 20-20 tie as we missed our last extra point. Back then, we didn't go to overtime. They decided the winner by stats. Rockwall edged the Bucks in first downs, and that decided the outcome.

What a year, what a team. Some of our friends and teammates are no longer with us. Some couldn't make back to Alpine this week. Still others - we have no idea where they are. But we look back on the fall of 1972 with wonder and pride.

The Bucks repeated a semi-final appearance the following year. But, the 1972 team was the first, something we'll remember for the rest of our lives.

**WE SUPPORT THE 1972 BUCKS**

**BOTTOM ROW (Left to Right)**  
STEVEN SCOWN, CARL CHANDLER, TERRY CHANDLER, DAVID DeLo, JERRY SOTELLO, ORLANDO LEYVA, LARRY LARA, CHUNIE ENCISO, SABASTIAN CERVANTES, ROSS WILSON, SCOTT LEWIS, MOISES BRITO, HENRY VEGA

**SECOND ROW (Left to Right)**  
DANNY VILLANUEVA, OSCAR CORDOVA, RUDY RAMOS, MANUEL FUENTES, GLENN REYES, SAMMY FIERRO, RICKY HARVEY, JOHN BRIDGES, ROBERT LUJAN, KEVIN KELLY, BRENT PARSONS, JIMMY CARRILLO, JOE HOYER

**THIRD ROW (Left to Right)**  
ROBERT FIERRO, BILLY CHANDLER, KENNETH SANDERS, BUCHO GARCIA, RUDY COX, STEVE CLEGG, KEITH GRAHAM, MARK KAY, TRAVIS TUCKER, KELLY GRAHAM, JOHN CONANT, JOHNNY FITZGERALD, FORREST HENDRYX

**FOURTH ROW (Left to Right)**  
COACH KEN SCOTT, COACH JERRY BURLESON, JOE ARANA, FREDDY RODRIGUEZ, LEO DOMINGUEZ, JERRY JONES, LONNIE McMILLAN, LYNN CAFFEY, JEFF WILLIAMS, CLAY LANE, MIKE NEU, JOE LANE, MO MORROW, MARTIN ARANA, COACH HIGINIO PENA, COACH BOBBY CLANTON

## William Roscoe Livermore

The highest point in the Davis Mountains and surrounding region is Mount Livermore at 8378 ft. The Davis Mountains themselves are the second highest range in Texas, and result from the same geologic uplift and volcanic activity 35 million years ago that resulted in the Rocky Mountain chain. These mountains, representing a "sky island" separated from others by surrounding prairie, also block the westward flow of air, condensing it over the high peaks, often creating its own rain pattern.

The peak is also known as Baldy, a seemingly poor name for a mountain that provides the drainage system for the Davis Mountains with multiple major watersheds. Limpia Creek, the longest of the watersheds, begins on the northeastern slope of Livermore, and runs northeast for 63 miles to Barrilla Draw in western Pecos County. It is along Limpia Creek that Fort Davis was established in 1854, with a town growing up around it after the Civil War.

Madera Canyon and its attendant creek begins on the northwest-



**FIDDLER'S GREEN**

by larry francell

ern flank of Livermore, and runs northeast for 40 miles to join Big Aguja Canyon west of Buffalo Trail Boy Scout Camp. These two form Toyah Creek near Toyahvale and Balmorhea. Cherry Creek rising on the northeast slope runs in that direction for 67 miles towards Pecos, but runs dry well before then. Adobe Draw, the last of the water courses, begins to the northwest of Livermore and runs 40 miles into Culberson County, but is also now mostly dry.

Native Americans inhabited the Davis Mountains long before the Spanish and American explorers entered the region, and surely they had a name for the high peak, but such has not been recorded. Spanish explorers, American traders, and the U.S. Army from Fort

Davis certainly noticed the peak (the Army even operated a sawmill at the base of Livermore), but when it came to an official name, that honor went to William Roscoe Livermore, U.S. Army Engineers.

Livermore was born in Cambridge, Mass., and, passing on Harvard, graduated sixth in his class from West Point in 1865 just as the Civil War was over. The highest-ranking graduates were selected for the more elite units in the service, and Livermore joined the Corps of Engineers as a first lieutenant. For greater efficiency for the war effort, on March 31, 1863, the Army Corps of Topographical Engineers merged with the Corps of Engineers.

Livermore's first assignment was as an assistant engineer on the construction of Fort Taylor at Key West, Fla. From there in 1868, he helped to engineer the laying of the first telegraph cable from the U.S. to Havana. By 1879, now promoted to captain of engineers and chief engineer for the Department of Texas, he was in West Texas in the Davis Mountains and Big Bend conduct-

ing a survey to "establish sites for a series of military posts to defend the frontier lands," a survey that was most helpful to the Southern Pacific which would use that route to create a southern transcontinental railroad.

In summer 1880, Livermore was in the Davis Mountains, and rode into Colonel Ben Grierson's camp shortly after the 10th Cavalry's fight with the Apache chief Victorio at Rattlesnake Springs. Livermore's escort under Lieutenant John Wesley Pullman of the Eighth Cavalry was immediately put to work chasing the Apaches, but after several days Livermore and his escort returned to his survey work.

During the Spanish American War, Livermore was chief engineer of volunteers, and retired from service in 1907. He was recalled to duty in 1917 for World War I, and died in 1919.

But Livermore's true claim to fame was scaling that highest peak, placing a monument there, and naming the mountain for himself, the sentinel that today stands above the Davis Mountains.

## GSM INSURORS OF WEST TEXAS

Alpine Texas

Bethany Ahern, Agent

432.837.7419

AUTO • HOME • BUSINESS • HEALTH • LIFE

**SUNSHINE HOUSE INC.**

Sunshine House Senior Citizens Center Meals on Wheels  
402 E. Holland Ave. • Alpine, Texas 79830 • 432-837-5402  
www.sunshinehousealpine.com

**Thank you for the following donations:**

Faith Hegerfeld	Elizabeth Tanksley
Norman Wilson	Anne and John Carter
Alpine Avalanche	Anonymous
Gayle Lewis	Dana Hobby
Ginger Hillery	
Busy Bee Quilters in memory of Delores Realvasquez	
Chachi Hawkins in memory of Colin Powers	

**Our Vision:** A hunger-free, healthy community.  
**Our Mission:** To provide quality nourishment and social enrichment in the lives of seniors, the homebound and disabled in Alpine, Texas.  
Join us for lunch Monday through Friday, 11:30 - 12:30. • Cost is \$6.00 per person.  
Sunshine House is an equal opportunity provider and employer.

Catch each Friday Night wrap up in the **Alpine Avalanche!**  
Exclusives from coaches, players and fans.



### The Perfect Home for Your Ad

Get the inside edge on reaching the right customers with an ad in the Alpine Avalanche. From job listings, local news and entertainment, the Alpine Avalanche has what your customers are looking for.

*Don't miss out!*

The Alpine Avalanche  
www.AlpineAvalanche.com • 432-837-3334

GRACIAS!

**Gracias por su negocio.**

the **ALPINE AVALANCHE**

Serving the Big Bend and Davis Mountains Country since 1992

WWW.ALPINEAVALANCHE.COM

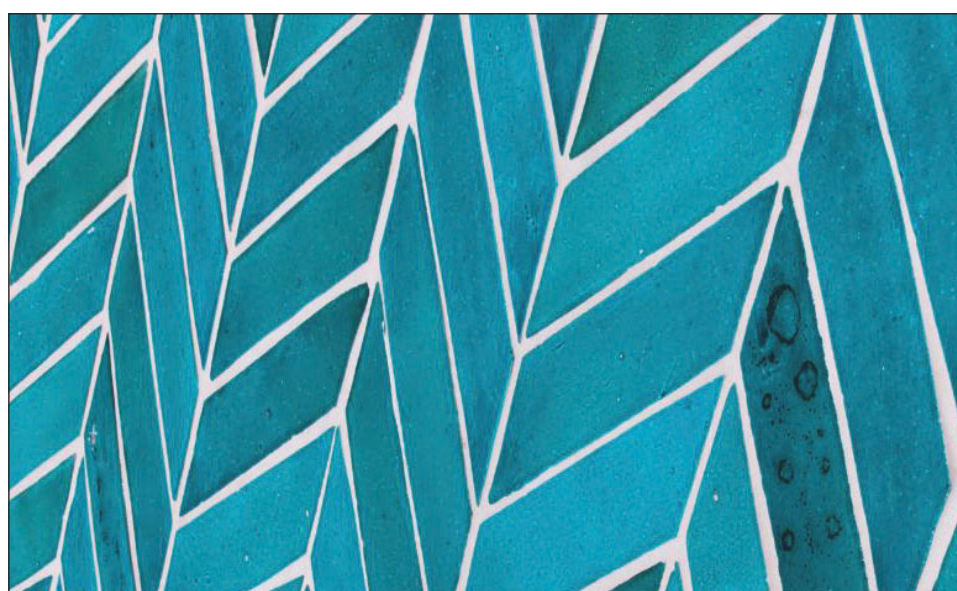


# 35th annual Chinati Weekend coming up

From Friday to Sunday, Oct. 7-9, Chinati will host a weekend-long program that is free to all. Chinati Weekend begins on Friday with Made in Marfa, when local makers, purveyors, canteens, and community organizations host events around town and throughout the weekend. Chinati's artist in residence Jesus Benavente will hold an open studio at the Locker Plant. On Saturday morning, Chinati will open its ranch gate for people to freely explore the collection. A champagne toast inaugurates a major com-

mission by the artist Sarah Crowner and an installation of works by John Chamberlain from the permanent collection. The temporary installation of Dan Flavin's untitled, in memory of my father, D. Nicholas Flavin, can also be experienced. During the afternoon at an artist's talk, Sarah Crowner will discuss her newly commissioned work for Chinati, Platform, Blue Green Terracotta for JC, which is dedicated to John Chamberlain, within the context of her painting practice.

On Saturday night a big community supper with ranch fare and Mariachi Santa Cruz will be held free for all at the Arena. Finally on Sunday morning, there will be a sunrise viewing of Judd's 15 untitled works in concrete, and 100 untitled works in mill aluminum, Robert Irwin's untitled dawn to dusk, and the John Chamberlain Building in Marfa's newly designated downtown Central Marfa Historic District. The 35th Chinati Weekend ends just shy of noon.



Sarah Crowner, detail of Platform.

Courtesy photo

# Sul Ross men's team shoots for goals

BY ROXANNE HILL  
Staff Writer

Building relationships along with empowering and building a talented group of emerging soccer players is what drives Sul Ross State University head men's Coach Jon Evan.

Evan, a second-year coach for the Lobos, had a prior coaching stint at another rural college in Oklahoma in a town even smaller than Alpine, but is no newbie to the professional coaching world.

He brings with him not only 25 years' coaching experience, but also stellar playing experience, having been a part of one of the best college soccer teams in the country at Southern Connecticut State University, where Evan was a backup goalie.

Evan is a coach, a leader, and an educator, and is

using all that knowledge to benefit the Sul Ross team, a group of players who are not only leaders, but also high achievers in the classroom.

"We have a group of young guys who are blue collar, hardworking, and like me, are first generation college students, and reflective of the work ethic and the community," said Evan.

Many of the players hail from the El Paso and Midland areas. There is even a local Big Bend youth soccer product, freshman and Fort Davis native Oscar Morales.

"He is a super skillful guy, and is the first guy we are aware of in program history to come from around here," noted Evan.

Evan recently took the Lobos on a soccer trip to Kansas City, Kan., for a valuable preseason experience where they got



Coach Jon Evan

to work out at the U.S. National Training Center for the Sporting Kansas City, a professional team.

"It was an amazing experience for our guys," exclaimed Evan.

This season, Sul Ross

will play teams from the American Southwest Conference, along with NCAA Division III teams. Evan runs youth co-ed clinics for the Big Bend Youth Soccer Association, and has two soccer loving kids, 14-year-old daughter Sarah, a freshman at Alpine

High School, and 11-year-old son Sam who attends Alpine ISD schools. Sarah is also a ball handler on the Lady Bucks girls JV basketball team.

Evan is excited to provide valuable opportunities for local kids to play in the BBYSA, and offer his college-age players a chance to assist with coaching, skills clinics, and more. He also enjoys playing an occasional pick-up game with Border Patrol agents and friends.

Sul Ross men's team will have its home opener against the University of Texas at Dallas on Thursday, Sept. 29, at 3:30 p.m. at the Lobo soccer field in Alpine.

Bringing his combined years of experience and leadership is no ordinary day for the hard-working coach as he leads the Lobos to their fifth season in the history of the school.

"We talk about making progress and getting better every day, as people, as students, as athletes, and as a team," exclaimed Evan. "I'm really proud of them."

## A sweet moment



Alpine Elementary School hosted the inaugural Pastries for Parents event on Sept. 9 that had plenty of pre-k 3, pre-k 4, and kindergarten parents who came out and enjoyed fresh donuts, friendship, and camaraderie with teachers and staff. In the photo, dad Brandon Rawls takes a picture with daughter Scarlett Morrissey, a kindergarten student.

**YOUR home for Beef!**  
Everything in stock  
**10% OFF**

**FAR WEST TEXAS CATTLE CO.**  
From Ranchers who care to Your Table

801 E. Holland  
Alpine  
432-538-2151

**SAFE TRAVELS START HERE**

See us for all of your vehicle maintenance and repair needs to ensure your car is operating safely and efficiently.

**FREE Tire & Brake Inspections**  
Call or visit us online to book your fast, free inspection service.

We also do:  
• Exhaust Service • Brakes • Shocks • Struts • Lube • Front End Alignments • Welding • & more!

**YOKOHAMA COOPER TIRES BF Goodrich FALKEN NITTO MICHELIN**  
& more!

**OASIS TIRE Co.** 2601 E. Hwy 90  
Alpine 432-837-5030

GIVE ME A CALL TODAY, I'D LOVE TO HELP YOU!  
ERIC WELCH | eric@oasistireco.com

Need to show a College ID or NIRA card

**30% Off All Western Wear**

Starts: September 22, 2022  
Ends: September 25, 2022

**OUT WEST FEED & SUPPLY**  
ALPINE, TX

2600 E. HWY 90  
ALPINE, TX 79830





# Opinions

## ONLINE POLL

**RESULTS**

**ARE YOU AFRAID OF YOUR BANK ACCOUNT AND CREDIT CARD INFORMATION BEING STOLEN ONLINE?**

**RESULTS**

Yes, and I take steps to keep my info safe. 77% (71 votes)

Yes, but there's not much you can do about it. 8% (7 votes)

No, incidents are isolated. 9% (8 votes)

No, I keep my money under my mattress, and I don't use credit cards 7% (6 votes)

Total votes: 92

**THIS WEEK'S QUESTION**

Now, the Avalanche asks:

Are you active on social media sites?

- Yes, I have accounts with several social media sites, and I check them throughout the day.
- Yes, but I limit myself to one or two social media sites that I check when I have time.
- Yes, but I check them only occasionally.
- No, I have no interest in social media.

Vote for this week's poll online at: [www.AlpineAvalanche.com](http://www.AlpineAvalanche.com)

## LETTERS

Send us your letters. Please include your name, address and phone number for verification purposes. Only your name and city will be published. Letters should be no more than 300 words. Letters become the property of the Alpine Avalanche and may be edited prior to publication for spelling and grammatical errors, clarity and length. Ad hominem attacks will not be accepted. Letters that include profanity or libel will not be printed. Send your letters to [editor@alpineavalanche.com](mailto:editor@alpineavalanche.com) by noon Monday for consideration.

## STAFF



**J.T. Maroney**  
Publisher  
[publisher@alpineavalanche.com](mailto:publisher@alpineavalanche.com)

**Gail D. Yovanovich**  
Managing Editor  
[editor@alpineavalanche.com](mailto:editor@alpineavalanche.com)

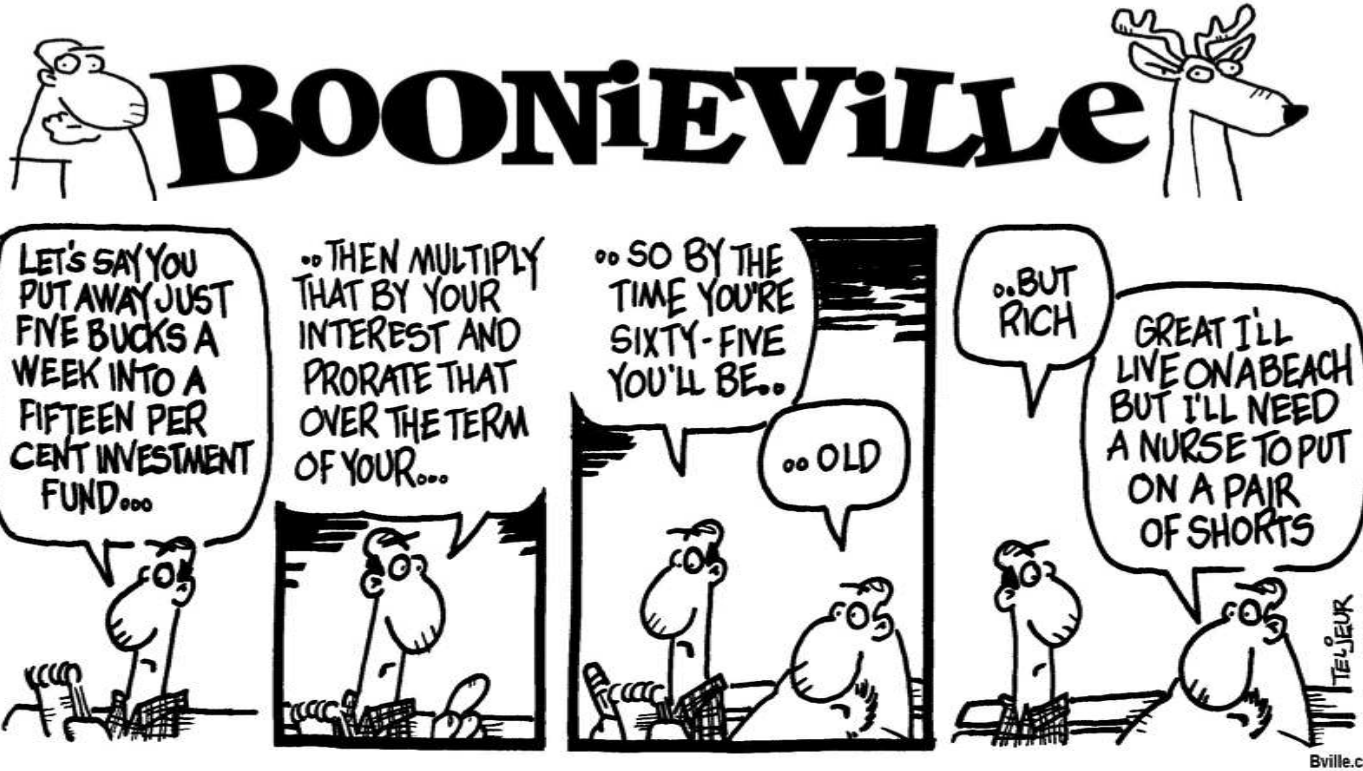
**Shelley Maroney**  
Office Manager  
[bookkeeping@alpineavalanche.com](mailto:bookkeeping@alpineavalanche.com)

**Roxanne Hill**  
Staff Reporter  
[hill@alpineavalanche.com](mailto:hill@alpineavalanche.com)

**Mesinda Llanez**  
Sports Correspondent

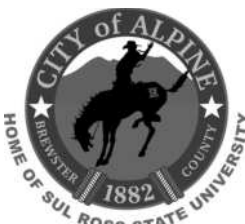
432-837-3334  
[www.AlpineAvalanche.com](http://www.AlpineAvalanche.com)  
Facebook: Alpine Avalanche

ALPINE AVALANCHE (014 800) is published every Thursday morning at 704 East Holland Ave., Alpine, TX 79830. Periodical postage paid at Alpine, TX. POSTMASTER: Send address changes to Alpine Avalanche, P.O. Box 719, Alpine, TX 79831. Subscription rates in Brewster, Jeff Davis and Presidio counties are \$42 per year, \$48 in-state and \$52 elsewhere. Any erroneous reflection upon the character, standing or reputation of any person, firm or corporation will be corrected when such occurs in this newspaper and is brought to the publisher's attention.



# We want to hear from you

BY THE CITY OF ALPINE



## City to create strategic plan, citizen input needed

As a governing body, the City of Alpine's mission is "to provide quality service to the citizens of Alpine." Quality can mean different things to different people, though, resulting in a less-than-direct approach to the many services and functions that encompass city government daily, from billing to street paving to providing parks for our citizens. This is why the city will be creating and implementing a strategic plan. Defining what is most important to our citizens, as well as how we can accomplish those priorities, will guide decision-making for public improvements and fiscal planning for a sustainable future for us all.

This plan is intended to be "for the people, by the people," and the resulting document will be a guide for decision making regarding annual budgets, how and when to complete large-scale capital improvements, etc., in a fiscally responsible manner. Essentially, what would you like to see the city spend your tax dollars on? While city staff will follow the industry standard process for creating such a plan (identify strategic topics, gather input, analyze data, formulate a plan, adopt/execute a plan, and monitor/re-evaluate plan regularly), the city's key focus is on gathering input, specifically public input. Beginning in October, we will host six public meetings, one in each ward and one with the mayor, structured to hear and document public ideas and concerns. Specific topics that we would like to hear the public's ideas on are

transparent government, strong and resilient economy, safe and flourishing neighborhoods, sustainable infrastructure, and effective and efficient services. We will also have an "other" category for all comments and ideas that do not fit into the five topics listed. Most citizens have thoughts on how we can best provide services, and we want to hear them all. City staff looks forward to seeing you at one of the following meetings. Ward 1 - Wednesday, Oct. 19, Alpine Elementary School cafeteria, 6 p.m.; Ward 2 - Monday, Oct. 3, Alpine Civic Center, 5:30 p.m.; Ward 3 - to be determined; Ward 4 - to be determined; Ward 5 - Thursday, Nov. 17, Visitor Center Pavilion, 5:30 p.m.; mayor - Saturday, Nov. 5, Granada event space, 2 p.m. All citizens can attend any of these meetings. You are not limited to just the one assigned for the ward where you live.

# I am here to serve you

As the congressman for the Texas 23rd Congressional District, I am committed to serving the needs of my constituents. I take great pride in the hard work my team and I are doing for Texas. A few months ago, a constituent reached out to our team after several months of not being able to get a hold of the Social Security Administration regarding a delay in her benefits. Just three days after her request came to us,



**TONY GONZALES**  
U.S. Representative  
Texas Congressional Dist. 23

she received a deposit of over \$7,000 from Social Security due to the help of our casework team. This success story is just one of over 1,500 cases solved by my office since January 2021. With five office locations spread evenly throughout my district, my team is ready to help, and has been able to return over \$3 million of federal funds to constituents this year alone. As your congressman, it is my top priority to be accessible to every constituent in every corner of my district. That is why I offer mobile office hours every month. Mobile office hours enable my team to visit in-person with rural communities so they don't have to travel far

distances to reach us. I also hold various in-person events throughout the year in all 29 counties across TX-23. If you or someone you know is having difficulty with a federal agency, I encourage you to reach out to my office. My team is trained to act as the liaison between the federal government and my constituents, including issues like retrieving documents, veteran assistance, and passport processing. Today and every day I am here to serve you. Our services are available in cities and towns across West Texas. If you ever need anything, please do not hesitate to contact my office at 210-806-9920 or online at [Gonzales.House.Gov](http://Gonzales.House.Gov).

## LETTERS TO THE EDITOR

**Y'all come!**  
Alpine Community Projects is hosting a potluck supper/social on Saturday, Sept. 24, at 5:30 p.m. at Ba-

ines Park by the Catholic church. The purpose of the supper is mainly just to visit with your neighbors, but it's also to let us know your thoughts about Alpine's

needs and wants. We really hope to see you there. We'll bring the plates, napkins, and silverware. Y'all bring a dish to share, something to sit on, and a

drink. Come enjoy the fellowship. Everyone is very welcomed.  
The Alpine Community Projects Board

## CONTACT YOUR REPRESENTATIVE

Joseph Biden  
The White House  
1600 Pennsylvania Avenue NW  
Washington, DC 20500  
202-456-1111

Tony Gonzales  
U.S. House of Representatives  
Washington, DC 20515  
202-225-4511

John Cornyn  
United States Senate  
517 Hart Senate Office Building  
Washington, D.C. 20510-4305  
202-224-2934

Ted Cruz  
United States Senate  
185 Dirksen Senate Office Building  
Washington, D.C. 20510-4306  
202-224-5922

Roland Gutierrez  
Texas Rep. Dist. 19  
PO Box 12068  
Austin TX 78711  
512-463-0119

Eleazar Cano  
Brewster County Judge  
P.O. Box 1630  
Alpine, Texas 79831  
432-837-2412

Michelle Rinehart  
Alpine ISD Superintendent  
704 W. Sul Ross Ave  
Alpine, TX 79830  
432-837-7700, Ext. 4

Catherine Eaves  
Mayor  
100 N. 13th St.  
Alpine, Texas 79830  
432-837-3301

Greg Abbott  
Governor  
Office of the Governor  
P.O. Box 12428  
Austin, TX 78711-2428  
800-843-5789

Dan Patrick  
Lt. Governor  
P.O. Box 12068  
Austin, TX 78711  
512-463-0001

Ken Paxton  
Attorney General  
512-463-2100





# Heard on the STREET

*Our Avalanche reporter asked, "Will you be attending any of the Alpine High School 2022 Homecoming festivities and football game?"*



**Matthew Roggow, Alpine:** Every one of them. We will be at every one of them because our son Jared is a senior. Vote Jared for King!



**Veronica Crespo, Alpine:** Yes, all of them. I can't wait to see the parade. I can't wait to see who is going to be the new Queen and everything else.



**Froylan Hernandez, Alpine:** Absolutely- going to all of them. Go Bucks! Good luck to the Bucks. They are good kids. Stay strong!



**Phillip Carey, Alpine:** Absolutely! Looking forward to cheering on the Bucks to victory.



**Robie Golden, Alpine:** Absolutely - wouldn't miss it!

Send your community events to editor@alpineavalanche.com.

UPCOMING EVENTS

**Sept. 24**  
**Co-ed Softball Tournament** sponsored by AHS Project Graduation 2023 at Centennial Field in Alpine, 500 S. 11th St. Teams must be registered by Sept. 21. Call Melissa O'Bryant 432-386-6224 for more information.  
**"Test of Faith" movie**, 3 p.m. at Alpine First Assembly of God, 1802 Fort Davis Hwy. Family friendly, and free and open to all. Bottled water and popcorn will be served.  
**Oct. 8-9**  
**Fall Festival** at Our Lady of Peace Catholic Church, 406 S.



6th St. in Alpine.  
**Oct. 13**  
**Spaghetti Supper**, 5-7 p.m. sponsored by the Kiwanis Club at Alpine Elementary School cafeteria. Spaghetti and homemade desserts.  
**Oct. 14**  
**Fish Fry**, 5-7 p.m. at American Legion Post 79, 306 W. Sul Ross Ave. All proceeds benefit Sul Ross State University athletics.

**Oct. 14-16**  
**Open Days**, 8 a.m.-5 p.m. at Davis Mountain Preserve in Fort Davis. Open for hiking, biking, equestrian, picnics, photography, birding, and other outdoor activities, including overnight camping options. To register go to nature.org.

ONGOING EVENTS

**Alcoholics Anonymous**, 502 E. Lockhart Ave. Schedules available on front door. For more information, call 915-562-4081 or aa-intergroup.org.  
**Alpine Lions Club meeting**, noon Tuesdays at the BBT conference room, 5th St. and Brown St.  
**American Legion Post 79 meeting**, 6:30 p.m., second Mon-

day each month, Legion Hall, 306 W. Sul Ross Ave. Dinner provided.  
**American Legion Auxiliary meeting**, 4 p.m., third Monday each month, Legion Hall, 306 W. Sul Ross Ave.  
**Big Bend Community Choral rehearsals** on Monday evenings at 6 p.m. in the First United Methodist Church sanctuary in Alpine. All are welcome, but first contact Andrew Alegria at Andrew.alegria@sulross.edu, call 432-837-8216, or visit bbccchorale.wixsite.com/bbcc.  
**Citizenship Classes**, at Alpine Public Library by appointment only, 805 W. Ave. E. 432-837-2621  
**ESL Tutoring**, at Alpine Public Library, 805 W. Ave. E. Call 432-837-

2621 to make an appointment.  
**GED tutoring**, at Alpine Public Library, 805 W. Ave. E. Call 432-837-2621 to make an appointment.  
**Kiwanis Club of Alpine**, noon, Wednesdays at the Sul Ross University Center, room 210.  
**Senior Coffee**, 9:30 a.m.-noon on Fridays at Alpine Public Library, 805 W. Ave. E. 432-837-2621.  
**Sons of the Legion**, 6:30 p.m., fourth Monday each month, Legion Hall, 306 W. Sul Ross Ave.  
**Voter registration assistance**, Tuesdays-Thursdays, 9 a.m.-1 p.m., Alpine Public Library, 805 W. Ave. E. 432-837-2621.

See more at alpineavalanche.com.

## PET OF THE WEEK

Alpine Humane Society Pet of the Week is Posie, a two-year-old brown tabby short hair. A sophisticated girl, she is petite. She is not as outgoing as other cats, and we believe she would prefer a quieter home with just adults or an older child.

Posie is a bit disorganized, with a mix of contradictory behaviors, seeking attention and then retreating. This may be simply be a function of a shelter. We do believe Posie will be a homebody with set routines. Petting is one of Posie's favorite things. She purrs and pushes against your hand for more. She has a loving demeanor.

If you need to rehome a pet, your best option is to join the Facebook group Alpine Friendly Pets. You should take some great photos of the pet, showing its personality and its size. Tell a bit about the pet, including sex, age, health condition. Often through networking in



this group, you can find a loving home. If you are rehoming your pet because it has costly health issues, Alpine Humane Society may be able to assist. Call our helpline at 432-837-2532.

Alpine Animal Services handles pet adoptions at the city shelter, 10 a.m.-1 p.m. and 2-6 p.m. Monday through Friday at 2900 East Old Marathon Highway. Cats and kittens are also available for adoption at the AHS

Cattery located in our Thrift Store.

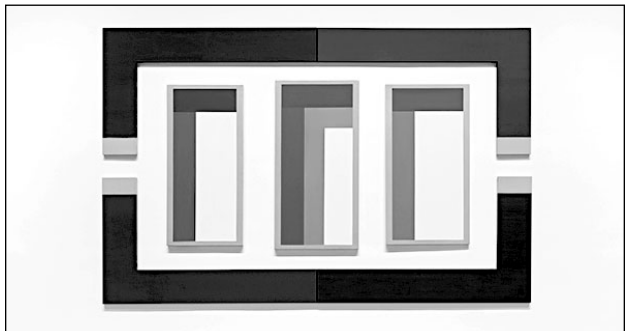
The Alpine Humane Society Thrift Store and Cattery is at 706 North Fifth Street in Alpine, open 10 a.m.-5 p.m. Monday through Saturday. For information about shelter pet adoptions, cremation services, or lost/found pets, call the Shelter at 432-837-9030. To view adoptable pets, visit PetFinder.com or www.alpinehumane.society.org.

# Novros exhibit to run in Marfa

Judd Foundation will present "David Novros - Paintings" on the ground floor of 101 Spring Street in Marfa from Sept. 20-Dec. 18. The two works in the exhibition, "Boathouse" and "Untitled" Graham Studio Mural II, are large, polychromatic paintings, described by the artist as portable murals. Both are related to site-specific pieces, no longer extant.

This exhibition presents new opportunities for considering Novros's work within the context of his permanent fresco at 101 Spring Street, and for seeing anew the importance of place and permanence to his work more broadly.

In conjunction with the exhibition, Judd Founda-



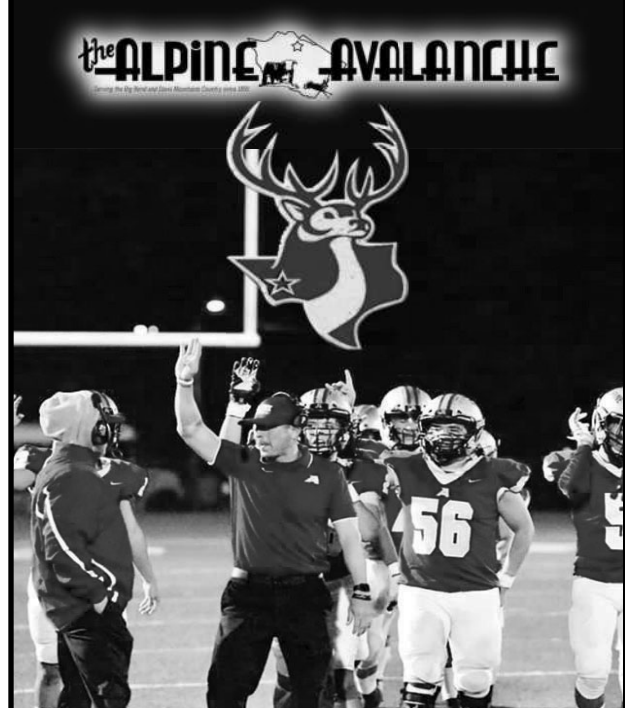
"Painting" by David Novros.

Courtesy photo

tion will host a reading by poet and translator Bill Porter on Thursday, Oct. 13, and a conversation between David Novros, Flavin Judd, and Dr. Matt L. Levy, on Thursday, Nov. 10. Both events will be held at 101 Spring Street.

Public hours for the exhibition are Thursdays, Fridays, and Saturdays from 1-5 p.m.

**Catch each Friday Night wrap up in the Alpine Avalanche! Exclusives from coaches, players and fans.**



**Dan Platt, Jr.**

Home Auto Commercial **LIVINGSTON** INSURANCE AGENCY Serving West Texas

903 W. San Antonio • Marfa  
 432.729.4306 • 281.785.5847  
 Dan@marfainsurance.com | marfainsurance.com

**WEST TEXAS EYECARE**

Dr. Hulon Pass - Optometrist  
 Dr. Joshua Pass - Optometrist  
 Dr. Brian Cherry - Optometrist

605 N. Main P.O. Box 1568  
 Ft. Stockton, TX 79735  
 432-336-3662 • 432-336-6711  
 Mon - Fri 8:30 am-5:30 pm

**CENTURY TRAILER COMPANY**

2900 W. Dickinson Blvd. Fort Stockton, TX  
 432-336-8797  
 centurytrailersftstockton.com

Trailer Sales, Parts & Service, Truckbeds & Grill Guards

32' Gooseneck Brand

**BIG BEND TITLE, LLC**

Serving the Greater Big Bend Area

PROTECTING YOUR LARGEST SINGLE INVESTMENT!  
**YOU HAVE THE POWER OF CHOICE IN CHOOSING YOUR OWN TITLE COMPANY.**  
 Now serving Brewster, Jeff Davis and Presidio Counties

Alpine Office: 608 E. Holland Ave. Alpine, TX 79830 (432) 837-9172 jdca@sbcglobal.net  
 Fort Davis Office: 309 State St. - Hwy. 17 S P.O. Box 813 Fort Davis, TX 79734 (432) 426-3288  
 Marfa Office: 212 Highland Ave. Marfa, TX 79843 (432) 729-4299

**Terrell County Sheriff's Office**

**Thaddeus C. Cleveland**  
 Sheriff-Tax Assessor-Collector  
 105 East Hackberry, P.O. Box 320 Sanderson, TX 79848-0320  
 Phone: 432-345-2525 Fax: 432-345-3056

The Terrell County Sheriff's Office will be holding a vehicle auction on Saturday October 1, 2022 starting at 10:00 AM at the corner of Oak Street and First Street. **All vehicles are sold as is!!!** Any questions feel free to contact the Terrell County Sheriff's Office at (432) 345-2525.

\*\*\*Methods of payments are cash, letter of guarantee from the bank with proper ID.\*\*\*

We are happy to announce Mr. Norris will be back home in Terrell County as our auctioneer!

**Inventory**

Year	Make	Model	VIN
2011	Ford	F-150	1FTFW1EF2BKD19113
1999	Ford	Explorer	1FMZU32E3XA96570
2010	Ford	Escape	1FMCU0DG2AKA8613
2010	Nissan	Titan	1N6BA0ED3AN313708
2001	Chevrolet	Suburban	3GNEC16T61G194963
2010	Ford	F-150	1FTFW1EV0AFB62597
2008	Chevrolet	Silverado	1GCEC19X58Z329643
2010	Nissan	Pathfinder	5N1AR1NN3AC621488
2015	Nissan	Rouge	5N1AT2MT6FC895668
2015	Chevrolet	Silverado	3GCPREC6FG148283
2013	Chevrolet	Silverado	3GCPCE0XDG183435
2012	Mazda	3	JM1BL1V7XC1578634
2011	Ford	F-250	1FT7W2A63BEA94490
2014	Chevrolet	Malibu	1G11B5SL2EF188035
2001	Ford	F-250	1FTSW21R88EA44813

\*\*\*Vehicle, date or time subject to change\*\*\*





The newly remodeled Porter's in Presidio is a preview of what's to come at the store's Second Street location in Alpine.

Courtesy photo

PORTER'S • FROM 1

truly care about the people, and feel grateful to be a part of their lives," he said.

Living with a servant heart, the Porter family makes plates of food for crowds at their own church. Porter's supports countless events, groups, and charities locally and worldwide.

"At Christmas time, we match every donation penny for penny," Ellison explained.

Round up donations alone totaled \$177,000 last year.

A scholarship program for good standing employees offers college tuition and books.

"This is a debt-free way to pursue something they're passionate about," said Ellison, a personal recipient of Porter's education program, and using his degree in house, "I chose to stay on and help them as they helped me."

Devoted employees and generations of the

**"We** want everyone to be excited about the investment we've poured into the community. We've really done Alpine right. Nothing in the old store remains. If you're going to replace the ceiling, you replace everything under it."

— Trae Dutchover, general manager of the Van Horn, Presidio, Marfa, Fort Davis, and Alpine stores

Porter family work side by side in harmony.

"Everyone just does their job, like in sports, a cog in the system, and respects one another," said produce stocker Winston Calloway. "We are very lucky to have Trae Dutchover, who does everything to facilitate community needs."

Dutchover is the general manager of the Van Horn, Presidio, Marfa, Fort Davis, and Alpine stores.

Dutchover, Ray Porter's grandson, supervises every phase of the Second Street construction, dealing with regional delays, weather,

post-pandemic supply shortages, and labor issues. As a forward-thinking manager, Dutchover anticipated backorders, requesting equipment far in advance.

"We want everyone to be excited about the investment we've poured into the community. We've really done Alpine right," said Dutchover describing the spacious, new store. "Nothing in the old store remains. If you're going to replace the ceiling, you replace everything under it."

The new building was gutted for wall-to-wall updates. These include an infinity ceiling with

dropped lighting, a huge meat department, an additional isle of freezers, a deli with prepped options, an expanded perimeter of fresh foods, brand new bathrooms, brick décor aesthetics, and neon signs.

Fourteen-year employee Kendra Greaves, a scanning coordinator, said, "I have helped open new stores in Presidio, Midland, and Big Spring. They are really nice, and people love them. Whole families come out together, and just look around like they're in a mall."

The teamwork is positively essential. Porter's sets a wonderful example, like using local cooks for fresher choices.

The Porters themselves recently visited Alpine, and were pleased to see that same standard of excellence customers have come to expect from the grocery chain, and to see it getting a fresh new face.

HISPANIC • FROM 1

them, and everything came handed down from the other school."

Marfa native Mario Rivera recalled the time he was a first grader, and saw Anglo teachers for the first time.

"The teacher sent me back home because I cried too much," said Rivera, who still lives in Marfa. "I had never seen a white person that close, and my brothers and sisters were not in the classrooms. So I cried all day and got sent home."

In 2007, another Blackwell alum, Joe Cabezuela, decided to have a school reunion to reminisce about old times. Several raised money for building repairs, and even donated original memorabilia. Old photographs, lettermen's sweaters, class rings, report cards, graduation bulletins, and diplomas are some of the items prominently displayed at the Blackwell School. One special exhibit includes a 1947 graduation class ring from alum Adalberto Calderon, who donated it to the school in 2018.

The Blackwell School

is listed on the National Register of Historic Places, and is looking to be classified as a National Historic Site thanks to a bill introduced in Congress by U.S. Rep. Tony Gonzales and U.S. Senator John Cornyn.

Rivera, who graduated from Marfa High School in 1961, added, "This is probably the last standing school and building for segregated Mexicans. We rely on memories that would be lost and forgotten. And if we preserve this building, it will be here forever, for generations to come." Enck

**"T**his is probably the last standing school and building for segregated Mexicans. We rely on memories that would be lost and forgotten. And if we preserve this building, it will be here forever, for generations to come."

— Marfa native Mario Rivera

agreed wholeheartedly, saying, "It's been my great honor to meet and work with some of the former students and get to know their stories. The Blackwell school represents segregated Mexican American education everywhere in Texas and

all across the borderlands. When we talk about Hispanic heritage, part of that is this painful history of segregation and discrimination, but the other story that emerges is that a lot of students have a lot of pride for what they accomplished here."



**Dona Ward Blevins**  
2100 W Hwy 90, Ste B  
Alpine, Tx 79830  
dblevins@farmersagent.com  
farmersagent.com/dblevins

**WE'VE GOT YOU COVERED!**

• Home • Auto • Commercial • Life

Call 432-837-2225 today!



MONUMENT • FROM 1

including a timeline of proposed projects. Some topics suggested by Antrim included, but were not limited to, transparent government, economic considerations tied to physical growth and development, and providing effective and efficient services to the public, such as accurate billing and invoicing.

Based on a tentative schedule, Antrim said that from October through December, the city would focus on gathering input from the public, analyzing the data next February, and creating a strategic plan in April 2023, with adoption in May 2023 to coincide with the fiscal year 2024 budget process.

Some of the issues were developing local partnerships for child-care solutions, increasing affordable housing, providing quality of life such as parks, and sustainable infrastructure.

Antrim admitted sustainable infrastructure was the issue the city heard the most complaints about, included establishing a street repair and rebuilding program.

Regarding future budgets and tax increases, Antrim added, "When looking at your budget, and you have to make those hard decisions with the increase in fees and with raising taxes, the public knows why you are doing it. We are going to raise it because we want to accomplish your priorities, and this is how we can do it. Are you buying equipment? Are you going to pave my block? So, people can see, this is an actionable plan. But it starts with the public participation."

The next regularly scheduled city council meeting is set for Tuesday, Oct. 4, at 5:30 p.m. at city council chambers and via Zoom video-conferencing.



**Cremation starting at \$2995**

Bringing AFFORDABLE cremations and funerals to the area.

We accept pre-planned funerals from other funeral homes.

**James Hall • (432) 249-1333**  
43430 Hwy 17 South Fort Davis

mobilemortician@yahoo.com • Website: www.mmofortexas.com  
Facebook: Davis Mountain Funeral Hall

**Alpine Retirement Low Income Housing**

**62 and over**  
**1 Bedroom Units**  
**All Electric**



Subsidy accepted  
To apply go to:

**alpineretirementhomes.com**  
Or call: **432-837-2259**

Sponsored by:



capitalfarmcredit.com  
NMLS493828

PROUD MEMBER OF THE FARM CREDIT SYSTEM

432.837.5948 | 108 West Avenue E | ALPINE

**ROSWELL LIVESTOCK AUCTION SALES, INC.**

**SALE DATE: MONDAY, SEPTEMBER 19, 2022**

1066 head of cattle sold on an uneven market, with excellent buyer attendance. This is the top of the market and prices range down from this according to quality, quantity, condition, and fill

**COMPARED TO LAST WEEK:**

**Stocker Calves:** Steady to \$2.00 lower

**Feeder Cattle:** Steady to \$2.00 higher

**Packer Cows and Bulls:** Steady to \$1.00 lower

300# - 400# Steers	228.00 to 229.00
300# - 400# Heifers	179.00 to 186.00
400# - 500# Steers	198.50 to 228.00
400# - 500# Heifers	176.50 to 179.00
500# - 600# Steers	178.50 to 198.50
500# - 600# Heifers	161.00 to 176.50
600# - 700# Steers	173.00 to 178.50
600# - 700# Heifers	144.00 to 161.00
700# - 800# Steers	153.00 to 173.00
700# - 800# Heifers	Not well tested
Packer Cows	83.00 to 91.00
Canner & Cutter Cows	70.00 to 78.00
Packer Bulls	100.00 to 105.00
Feeder Bulls	75.00 to 85.00
Cow / Calf Pairs - Top Half	1000.00 to 1350.00
Bred Cows - Top Half	Not well tested





# FARMING and RANCHING IS A WAY OF LIFE

BARB WIRE, T-POST, CHUTES, FENCING SUPPLIES & MORE



2700 E. HWY 90  
ALPINE TEXAS 79831  
432-837-7429

★ EST 1891

## LOOKING BACK

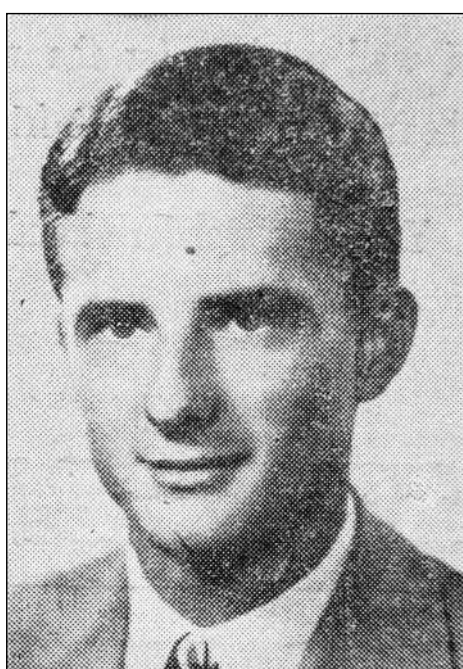
Alpine Avalanche

SERVING THE BIG BEND  
AND DAVIS MOUNTAINS COUNTRY



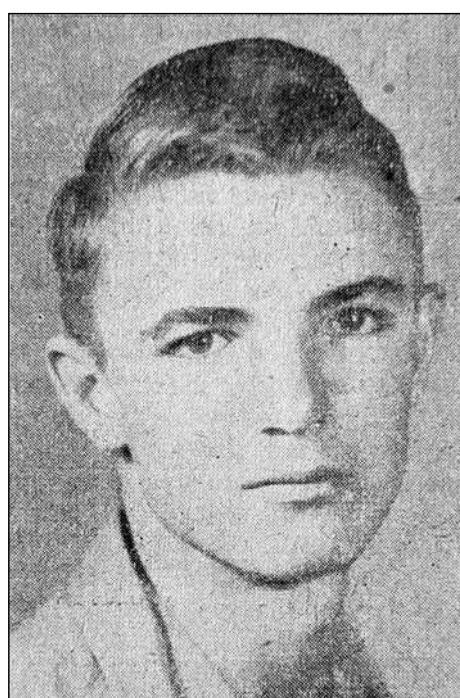
November 28, 1947

Miss Sylvia Smith, daughter of Mr. and Mrs. Lee M. Smith, was crowned queen of the Alpine High School Bucks' football team at a ceremony held between halves during the Bucks last game of the season with Marfa High here Nov. 14. Sylvia is a sophomore in Alpine High School.



September 17, 1948

G. Davis Dean is the new Church of Christ minister here. He is a recent graduate of Harding College, Searcy, Ark., where he trained for missionary work in China, and while serving the local church will work on his master's degree at Sul Ross.



October 15, 1948

Otis French, Jr., received the Eagle rank in Scouting at the Merit Badge show in El Paso Oct. 2. He is at present a junior leader in the Methodist church Troop 41, and has been a member of Baptist church Troop 44.



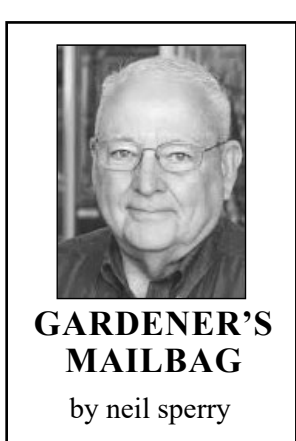
September 24, 1948

President Truman will pay a visit to Alpine tomorrow on the presidential train which will stop here from 7:25-7:45 p.m.

# Make sure Esperanzas are Gold Star and not a knock-off

Dear Neil: I have planted several Esperanza plants in various places around our yard. All they have done is grow quite tall. I have tried cutting them down to three to four feet, but it didn't help to get them to bloom. Still no flowers at all, even though they're in full sun. What can I do?

Dr. Jerry Parsons, retired Extension specialist and professor emeritus from Texas A&M has put us on alert a couple of years ago that knock-off Esperanzas were being sold. Our mutual friend Greg Grant found and developed the original Gold Star Esperanza, known for its fabulous flowers and non-stop blooming habit. Along with Dr. Steve George, also with the Extension Service of TAMU, the three men introduced it to the Texas nursery trade about 25 years ago as a Texas Superstar plant. As such, it must be sold with a tag so noting its status.



### GARDENER'S MAILBAG

by neil sperry

Those tags are sold with the rooted cuttings, with the small price of the tags being donated back to the Superstar program at the university. However, a few growers sometimes choose to bypass that small additional expense, and simply grow their own plants from seeds. By doing so they lose the everblooming habit of Gold Star. It sounds like that's what you got. I would suggest you visit with the nursery where you bought these. They may have bought them from a source that either didn't understand or that willingly bypassed the rules. Be sure next year

that you buy plants that are tagged Gold Star esperanza, and are in bloom at the time that you buy them.

Dear Neil: What is happening to my sago palm? The leaves start turning pale. Then they droop, and eventually they fall off and the plant dies. Help!

Sago palms are normally pretty durable. I do not see any evidence of cycad scale, the most common invader. When it's present, it's ugly and obvious. I'm assuming you haven't let your plant get dry to the point of no return at some time in the past. That leaves me with two possibilities. The plant looks like it might be suffering from sun scald, perhaps from being moved from a shaded location into more sun than it could tolerate. And finally, spider mites are fond of sago palms. They will attack from the backs of the leaves, but they are almost microscopic. Thump one of the discol-



### Gold Star Esperanza

ored leaves over a clean sheet of white paper. If spider mites are present, they will fall to the paper and start moving around. You can control them by applying an insecticide that is labeled for mites. Spray it on both the top and bottom leaf surfaces.

Have a question you'd like Neil to consider? Email him at [mailbag@sperrygardens.com](mailto:mailbag@sperrygardens.com). Neil regrets that he cannot reply to questions individually.

### ACROSS

- 1 TX Carolyn Jones film: "The Seven Year \_\_\_\_"
- 5 natl. college sports org. (abbr.)
- 6 hair coil
- 7 former Houston mayor Lanier (init.)
- 8 this Heisman winner Brown played high school ball in Dallas rubs it in
- 9 Odessa AM
- 16 book: "Little \_\_\_\_ of the Texas Revolution" in Grand Prairie: "Ripley's Believe \_\_\_\_"
- 21 very small town in Taylor County
- 22 TX O. Henry short story: "A Houston \_\_\_\_"
- 27 San Antonio AM
- 28 TXism: "gave 'em \_\_\_\_ and a hug"
- 29 this Doug pitched for Astros (1993-97)
- 30 TX Ginger 1947 film: "It \_\_\_\_ You"
- 32 a TX Mandrell (init.)
- 33 TXism: "hot \_\_\_\_ in July"
- 36 TXism: "feel like \_\_\_\_ chewed up and spit out"
- 37 TX pilot Chennault was adviser to Chiang \_\_\_\_-shek
- 38 what Jack took up the hill? (2 wds.)
- 39 produce electricity

- 41 areas along the Gulf military assistant
- 45 "plumb crazy"
- 46 TXism: "when hell freezes \_\_\_\_" (never)
- 47 cow "howdy"
- 48 most weak
- 51 TX-filmed "Daddy's \_\_\_\_": Who's Got the Will? (1990)
- 52 oil additive
- 53 cry of triumph

### DOWN

- 1 former Texas airline "Braniff, \_\_\_\_"
- 2 Fort Worth university (abbr.)
- 3 Dimmitt County's \_\_\_\_ Springs
- 4 TV movie series: "\_\_\_\_ Fame"
- 8 TXism for "carry"
- 9 TX Buck Owens' "I've \_\_\_\_ Tail"
- 10 TX Sissy played this Loretta in "Coal Miner's Daughter" (init.)
- 11 TX Janis died of this (abbr.)

## TEXAS CROSSWORD

by Charley & Guy Orbison  
Copyright 2022 by Orbison Bros.

- 12 TXism: "coming apart \_\_\_\_"
- 13 Hawaiian poi can be made from this tuber
- 14 TXism: "a whole \_\_\_\_" (a lot)
- 15 a Texas Indian tribe
- 16 Texas clothing designer, Oldham
- 17 Astro extra innings game on the West Coast? (2 wds.)
- 18 hinder progress
- 20 TXism: "\_\_\_\_ 'bout"
- 22 this Duvall starred in "Breakout" with TX Quaid (init.)
- 23 TXism: "don't give a hoot \_\_\_\_ holler"
- 24 homemade liquor "sour \_\_\_\_"
- 25 "\_\_\_\_ walk"
- 26 Sam Houston's home in Indian territory: "The Wigwam \_\_\_\_"
- 28 U.S. still has \_\_\_\_ on Cuban cigars
- 31 has a debt
- 34 TXism: "\_\_\_\_ as the bottom of a well"
- 35 cowboy bolo
- 37 Shreveport LPTV
- 40 "One \_\_\_\_ , one Ranger"
- 42 TX George Strait hit: "\_\_\_\_ Come to Expect It From You"
- 43 TXism: "his recall \_\_\_\_ overhaul"
- 49 type of Apache
- 50 Ranger announcer, Nadel (init.)

### BARGAINS OF THE MONTH

12.99 YOUR CHOICE 20 lb. Wild Bird Food or 5 lb. Nut & Fruit Blend™ L 501 272, 355

18.99 SALE PRICE -3.00 INSTANT REBATE! FINAL PRICE 15.99

32.99 Ortho® Home Defense Max® 1 gal. Ready-to-Use Indoor Insect Barrier Includes extended wand. L 282 222 84 1/2 inch 2 per offer with True Value Rewards Card.

37.99 Black Jack® 4.75 gal. Drive-Max® 1000 Filler & Sealer P 782 575 1

28.99 Rubbermaid® 32-Gal. Trash Can W 133 884 PB

9.99 WD-40® 14.4 oz. EZ-Reach® Multi-Use Lubricant 212926

16.99 Prestone® 1 gal. Yellow Antifreeze/Coolant H 303 507 PB

21.99 Zinsser® 1 gal. Primer/Sealer/ Stain Killer P 209 630 84

13.99 DeWALT® Ratcheting Screwdriver Set R 211 400 84

Morrison True Value  
301 N 5th St  
Alpine, Texas 79830  
432-837-2061  
[www.morrisonhardware.com](http://www.morrisonhardware.com)

True Value®  
Sale ends 9/30/22

Find the right products for your project at your local True Value®.

### Last Puzzle Solution

S-1602



## Paying for College?



If college is still part of your child's plan after high school, don't let uncertainty around the state of higher education stop you from financial planning.

We have free, digital lessons about FAFSA and other payment options for your family.



## TRANSPICOS BANKS

Texas Banking at its Best.

402 W Holland Ave. | Alpine, TX 79830 | 432-837-0094  
www.transpecosbanks.com

Member FDIC

# Sports

## Lady Bucks split at home, on road

BY JOHN SMITH  
Contributing Writer

The Lady Bucks volleyball team split a pair of games this week at home and on the road.

First, the Fort Stockton Lady Prowlers came for a duel in Alpine on Sept. 17. It was a change of venue for everyone, as this was the first game played on the new gym floor at the high school. The Lady Bucks were competitive in all three sets, but were ultimately

defeated 3-0.

After losing the first two sets, 25-20 and 25-22, Coach Autumn Kilpatrick made some line-up adjustments. Junior Sierra Ruckman and sophomores Ella Miranda and Hope Dominguez rotated in. The Lady Prowlers held on to win another close set, 26-24, and complete the sweep.

Sophomore defensive specialist Jaycee Portillo summed it up, saying, "We played a tough Fort Stockton team. Every set of the game we fought until the very end. There are some errors we had that cost us the game which hopefully we can bypass before District. Even though we didn't win, it was good playing a bigger school before heading into District. As for District, I think we are ready to compete, and hopefully be bringing a championship back home."

Sept. 20 saw the Lady Bucks travel to Marfa to take on the Lady Short-horns. The Marfa team got off to a hot start, and the gym was electric with



Lady Buck Ali Maroney goes up at last week's volleyball game against Buena Vista.

Avalanche photo by J.T. Maroney

anticipation. The Lady Bucks weathered the attack and hung on to win the first set 25-20. From there, the Alpine team got rolling, winning the next two sets 25-12 and 25-16.

It was a good all-around team performance against a solid Marfa volleyball team that has had some impressive victories this year. Adayna Garcia led the offense with 12

kills, followed by Hannah Juett with five, and Ali Maroney and Peyton Kincade with three each. Error-free setting from Paula Vargas and Mia Morris, as well as fewer serving errors than normal, helped keep the momentum going.

District play begins Saturday, Sept. 24, as the Tornillo Lady Coyotes challenge the Lady Bucks at the Alpine High School gym at noon.

### Fightin' Buck Schedule

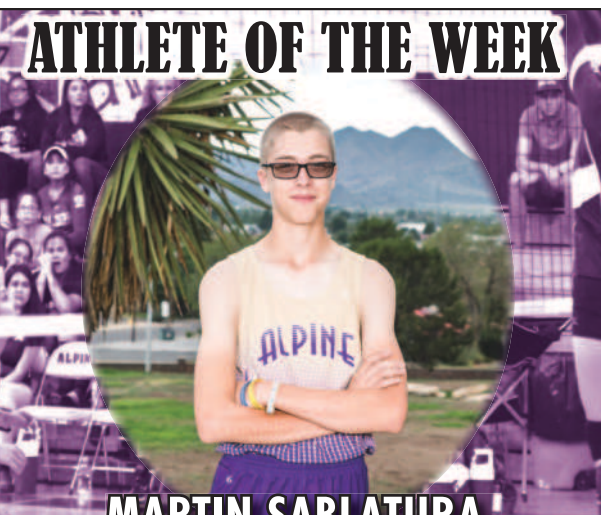
**CROSS COUNTRY**  
Sept. 24: Bo Coffman Invitational in Presidio TBA  
Oct. 1: Big Bend Mountain Ramble in Alpine TBA

**VOLLEYBALL**  
Sept. 24: Tornillo @ Alpine JV 6 p.m. / V 6 p.m.  
Sept. 27: Kermit @ Kermit JV 5 p.m. / V 6 p.m.  
Oct. 1: Crane @ Alpine JVP/JVG

11 a.m. / V noon  
Oct. 4: Presidio @ Presidio JVP/JVG 5 p.m. / V 6:30 p.m.

**FOOTBALL**  
Sept. 22: Odessa Compass @ Odessa 7th 5 p.m. / 8th 6:15 p.m.  
Sept. 23: Odessa Compass @ Alpine Varsity 7:30 p.m. - Homecoming  
Sept. 29: Pecos @ Alpine JV 6 p.m.  
Sept. 29: Fort Stockton @ Fort Stockton 7th 5 p.m. / 8th 6:15 p.m.  
Sept. 30: Tornillo @ Alpine Varsity 7:30 p.m.


## ATHLETE OF THE WEEK



### MARTIN SABLATURA

Martin shows results of true commitment, setting new 5K personal records in his best XC season yet!

Brought to you by



**Alpine Community Credit Union**  
111 N. 2nd St • Alpine, TX 79830  
(432) 837-5156

**Proud Alpine Bucks**

**Sponsors:**
















## Saddle bronc rider looking for successful season

BY KARA GERBERT  
Contributing Writer

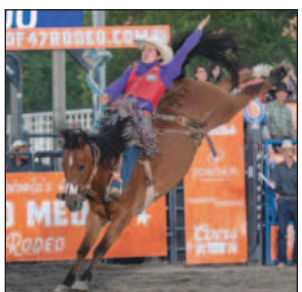
Sul Ross State University Rodeo Team member and graduate student Brandon Lansford of Cotulla has been horseback almost since birth. He sat on his first horse when he was two weeks old, and entered his first playday at age four. Lansford hails from a long-time ranching family, but not necessarily rodeo.

His first rodeo type experiences were formed during the play days of his youth, the small amount of experience and knowledge he gained from his dad, and his experiences in college. Lansford's first actual rodeo experience began in junior high, and he began his saddle bronc career during his freshman year of high school where he competed in the National High School Rodeo Association circuit.

When the Avalanche asked Lansford what he thought the most challenging aspect of his sport was, he said all the tiny details involved in a perfect ride are the most challenging to overcome. The perfection and the work involved to reach that point is a constant challenge.

When asked which professional saddle bronc rider he looked up to, there was not a single answer. Instead, he mentioned Isaac Diaz, Billy Etbauer, Bobby Mote, and Cody DeMoss as those he looked up to in his sport.

Said Lansford, "Saddle bronc riders are more tal-



Sul Ross State University rodeo rider Brandon Lansford competes in a saddle bronc event.

Courtesy photo

ented and diverse these days than they've ever been."

As far as planning to go pro, Lansford said, "I will officially begin my rookie season in the Professional Rodeo Cowboys Association on Oct. 1."

He added that Head Coach CJ Aragon allowed him the opportunity to get in lots of practice over the past four years, as well as improve on his physical and mental abilities. He credits these opportunities and guidance by Aragon to his current success.

Lansford is not one for browsing when it comes to other sports, but he did say he enjoys the occasional round of golf, and likes to catch as many of the men's basketball games on the Sul Ross campus as he can.

About advice he would give to younger kids looking to compete in rodeo and especially saddle bronc, Lansford said, "Keep your head up, and keep a positive attitude because your time will come eventually."

The Sul Ross NIRA rodeo is set for Sept. 22-24 at the SALE Arena in Alpine.

## Our Lady of Peace Catholic Church

406 S 6th street • Alpine TX 79830

# Fall Festival

Oct. 8 & 9, 2022

Grand Prize \$1000.00 Gift Card + Last Supper valued at \$4500.00

5 more prizes \$1000.00 Gift Cards

"Faith, Family & Friends"

### MUSIC PROGRAM

**SATURDAY, OCTOBER 8**  
1 P.M. - PARADE  
6 P.M. - 8 P.M. - EL CHARRO Y UNA DAMA  
8 P.M. - 10 P.M. - GRUPO ALLSTARZ  
10 P.M. - 12 A.M. - FUNGI MUNDLE

**SUNDAY, OCTOBER 9**  
MATACHINES  
ABC DAYCARE  
MARIACHI SANTA ROSA  
FORT DAVIS BALLET FOLKLORICO  
ROXY CABELLO Y SU GRUPO  
DANCING GITANAS



# HOMECOMING 2022



**COME OUT and CHEER on the FIGHTIN' BUCKS**  
 as they take on Odessa Compass  
**FRIDAY AT 7:30PM**



**ALPINE HOME COMING COURT- KING AND QUEEN PHOTO:**  
 L-R: Jeremiah Pearce, Cody Morris, Jared Roggow, Tray Ervin, Zane Billings, Oscar Velasquez. Queens- Melanie Armendariz, Kiara Castillo, Alexis Rodriguez, Ella Wonosowski, Jasmine DeLeon, Estefania Mucharraz

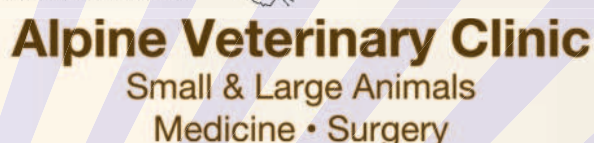


**ALPINE HOME COMING COURT- DUCHESS AND DUKE:**  
 L-R: Senior Dutchess and Duke: Sidney Byler-Hernandez, Tegan Emerson  
 Junior Dutchess and Duke: Kendall Emerson, Xadrien Reyes  
 Sophomore Dutchess and Duke: Masiela Miranda, Enrique Acosta  
 Freshman Dutchess and Duke: Emyliana Hernandez, Kelton Tarrant

**This page is proudly sponsored by the following businesses**

## Alpine Memorial FUNERAL HOME

CREMATIONS - PRENEED PLANS





# Avalanche Classifieds

**ERRORS** - Please check your ad the first day of publication. We are only responsible for the first incorrect insertion of any ad. Publisher's liability for damages resulting from errors in any advertising that it has agreed to publish shall be limited to the amount actually received by the publisher in consideration for its agreement to publish the advertisement in ques-

**ALL MAJOR CREDIT CARDS ACCEPTED**



PAYMENTS: MUST BE MADE IN ADVANCE • CASH • CHECK • CREDIT

**\$10 FOR 20 WORDS**  
30¢ FOR EACH ADDITIONAL WORD

**HOURS** - You may place your ad in person at 118 N. 5th St., Alpine, TX 79831 from 8 a.m. to 5 p.m.

Call 432-837-3334.

**CANCELLATIONS** - All ads

may be cancelled for the next publication until 12:00 (noon) on the Monday before publication.

**ACCEPTANCE** - The publisher wants to do everything that is possible within the confines of good taste and legal constraints to help you advertise your product or service to the best advantage. We reserve the right to edit or reject any copy or insertion that does not meet our standards of acceptance. The Alpine Avalanche does not run ads for anyone whose balance on previous ads is not current.

**PAYMENT** - All Classified Ads must be paid in advance.

**EMAIL** - Send your Classified Ads to the Alpine Avalanche by email at [bookkeeping@alpineavalanche.com](mailto:bookkeeping@alpineavalanche.com).

tion. It shall not be responsible for any consequential damages suffered by any party.

**DEADLINES** - All ads are due in the office by 12:00 (noon) on Tuesday.

**REAL ESTATE**

604 n. 6TH St. East, Marathon. ½ a city block in Marathon. Call 325-668-1390

**MOBILE HOMES FOR RENT**

Mobile homes and spaces. Close to Sul Ross University. Frontier Mobile Home Village. 1102 N. 9th St. trailer #35 Alpine. Call 432-837-2736

**MOBILE HOME LOTS**

3 mobile home lots on the corner of 14th street and West Murphy. Total size 138'x120'. All 3 for \$39,000. Will consider owner finance. 210-347-4768.

Mobile home lot for sale, 904 E. Ave. J, Alpine.

**MOBILE HOME LOTS**

Price \$21,000. 210-347-4768

**FOR RENT/LEASE**

FORT DAVIS HOUSE FOR RENT, \$1600 per month. 432-249-0030

Rentals Available. Call Rhonda Cole 432-837-5539

102 Baeza Circle - Fort Davis, 2 BR/1 Bath, rent \$1,000.00/mo + deposit 432-249-0293

Casita - one bedroom, central Alpine; furnished, fireplace, private garden, covered parking, laundry. Bills paid except electric. No smokers, pets. Suitable for one adult. \$950 monthly plus deposit of \$600. 6 mo. lease minimum. Avail-

**FOR RENT/LEASE**

able now. Contact bigbendwoman@gmail.

207 E. Stockton Ave., Alpine, TX. 3 bedrooms, 2 bath house with large backyard \$1,500 a month, plus deposit. Call 940-634-0227

Small 1 BR, 1 BA, \$500/mo. Available in October. 432-249-0569

**HELP WANTED**

Hampton Inn is seeking dedicated employees to fill night audit. Excellent pay and benefits. Please apply in person at 2607 West Highway 90.

Holiday Inn Express is seeking dedicated employees to fill front desk,

**HELP WANTED**

night audit, and housekeeping positions. Please apply in person at 2004 East Highway 90.

Cobblestone is seeking to hire cleaners for part-time positions. Please call the office for more information or stop by for an application! 432-294-0184

**WANT TO BUY**

I buy cast iron skillets please text or call 512-963-7533

Want to buy old Colt pistols and old Winchester Lever Action rifles. Daytime phone #: 432-294-2094. Nights/weekends: 432-364-2234  
☆☆☆☆☆☆☆☆  
☆☆☆☆☆☆☆☆

**TWIN PEAKS is hiring a Fulltime assistant manager trainee starting at \$12.50 an hour.**

After completing a minimum of 90 days training and successfully meeting a series of benchmarks, a promotion to Assistant Manager and a raise to \$15.50 will be given.

**Please apply in person.**



2609 West Highway 90 in Alpine, Texas

**DOC GLUCK**  
(469) 831-7762

*The following is gifted and attributed to Dr. Richard Gluck by his patients*

We, "The Friends of Doctor Gluck", have made many dozens of Alpine area residents aware that available to them, for all practical purposes twenty four seven, is a doctor who is as close as a phone call away, that the doctor and no one else immediately answers the call, that within five minutes their problem will have been to their satisfaction thoroughly addressed, that arrangements for their needs involving pharmacy, referral and most valuably a personable and compassionate explanation of their condition unambiguously and enthusiastically provided and that the cost is so minimal as to make payment arrangement a nearly insignificant topic.

All this from a doctor with 30 years experience whose many grateful patients consider him to be a cherished friend who is always available for deeply heartfelt encouragement and extensive experience-based advice.

The word "godsend" is more than frequently heard in discussions about the help he has given his many West Texas patients.

 Follow us on Facebook @ TheAlpineAvalanche

# WEST TEXAS ROUNDUP

**MOVING**

**FRANK'S MOBILE HOME MOVERS**



432-553-4628  
FORT DAVIS, TEXAS 79734  
FRANK A. CAUBLE

**REAL ESTATE**

**CARPENTER REAL ESTATE**  
Established 1947 • Alpine, Tx



REAL ESTATE | LAND | RANCH | HOME | INVESTMENT  
www.legacybrokergroup.com | 432-837-3325

**SEPTIC SERVICES**

**DO NOT WAIT until your septic system shows signs of failure to have your septic tank pumped out!**

Waiting can mean complete clogging and an expensive septic system repair bill. Periodic septic tank pumping is far less costly than septic tank repair or replacing the entire septic tank system.

*We recommend septic system cleaning every 2-5 years.*

**Remember: Maintenance is much cheaper than replacement!**



**(432) 294-0758**


**B & S SERVICES is the BEST in Portable Sanitation**

*We have Special event rentals, monthly construction rentals, handicapped rentals and wash stations. We also service holding tanks.*

[bstoilets@hotmail.com](mailto:bstoilets@hotmail.com)

**PROPANE**

**WTG FUELS, INC. GAS CARD**



**GAS | DIESEL | PROPANE**

ALPINE | 432.837.2518 | MARATHON  
432-386-4422

**SPA**

*Beauty Bar*

432-837-4101 | Cell: 432-294-0351  
201 E. Holland | Alpine

**Angie Portillo**  
HAIR STYLIST

**REAL ESTATE**

Barbara Trammell, Broker Listings Wanted  
432-371-2430 - P.O. Box 356 Terlingua, TX 79852

**BIG BEND REALTY**

TERLINGUA RANCH \* TERLINGUA GHOSTOWN  
STUDY BUTTE \* SOUTH COUNTY AREA  
UNDEVELOPED RECREATIONAL \* HOMESITE  
RESIDENTIAL \* COMMERCIAL

**FOR ALL YOUR NEEDS - LET'S TALK!**

**TIRE DISPOSAL**

**Tire Disposal**

Legally dispose of scrap tires!

(TCEQ Permitted facility).  
Fees: \$8/semi tire and \$6/auto, pickup, and trailer tires when delivered to West Odessa, TX  
No supersizes, agricultural or machinery tires.  
Add \$4/tire extra for pick-up service in Ft. Stockton. & \$6/tire extra for pick-up service in Marathon & Alpine.  
(50 tire minimum for pick-up)

Open daily during daylight hours. Call 432-614-1865 for more information.

**WELL SERVICE**

**SKINNER'S DRILLING & WELL SERVICE, LLC**

*Serving You Since 1978*

**WALTER SKINNER** 432-837-2497  
TDLR Master Lic. #2838 AI

**John Skinner** Lic. #59655 KLPW  
**Thomas Skinner** Lic. #59401 LPW

2300 W. Mosley Loop, Alpine, TX  
[www.skinnerdrillingbigbend.com](http://www.skinnerdrillingbigbend.com)

**FindARanch**  
OUT WEST

Specializing in Ranch & Rural Properties in the Big Bend & Highlands of West Texas

(888)729-4424 • (432)249-0401  
P.O. Box 726, Marfa, TX 79843  
Cleat L. Stephens, Broker  
[cleat@findaranch.com](mailto:cleat@findaranch.com)  
[FindARanchOutWest.com](http://FindARanchOutWest.com)

TREATING YOURSELF TO NEW CLIENTS?  
**WE HAVE YOU COVERED!**

**the ALPINE AVALANCHE**  
Serving the Big Bend and Davis Mountains County since 1951

**GIVE US A CALL TODAY & RESERVE YOUR SPACE!**  
**432-837-3334**



**NOTICE OF PUBLIC SALE**

Pursuant to Chapter 59 of the Texas Property Code, Alpine Storage at 234 E Brown Ave., Alpine TX is having an online auction. The property is being sold to satisfy a landlord's lien.

The sale will be held at [www.storageauctions.com](http://www.storageauctions.com) beginning Sat. Oct 1 at 10 AM. Auction bidding will conclude Sat. Oct. 7 at 10 AM.

Seller reserves the right to withdraw any property from the sale upon payment in full from the tenant. Tenant's property may be redeemed prior to sale upon payment of all sums due to Lessor.

Property being sold includes contents of the units listed below.

Heather Blaskie B-19 Household & Frames

Rebeka Rice A-1 Household

Barbara Zimmerman D-8 Household

Clark Nussbaum, Manager  
432-837-3411  
[clark.nussbaum@yahoo.com](mailto:clark.nussbaum@yahoo.com)

**One Spot.  
Lots of  
Possibilities!**



CARS, TRUCKS,  
MOTORCYCLES & MORE



HOUSES FOR  
SALE & FOR RENT



LOCAL & REGIONAL JOBS



PETS FOR ADOPTION



GARAGE SALES



BARGAINS GALORE  
AND MUCH,  
MUCH MORE.

Reach potential buyers  
when you advertise  
in the Classifieds!

Place your ad today at  
**432-837-3334**  
or  
[publisher@alpineavalanche.com](mailto:publisher@alpineavalanche.com)

**ALPINE  
AVALANCHE  
CLASSIFIEDS**

**NOTICE TO CREDITORS**

Notice is hereby given that original Letters of Administration for the **Estate of Rudolfo Garcia, Deceased**, were issued on August 16, 2022, under Docket No. PR03091, pending in the County Court of Brewster County, Texas, to **Frances H. Garcia**.

Claims may be presented in care of the attorney for the estate, addressed as follows:

Representative,  
Estate of Rudolfo Garcia, Deceased  
c/o Sarah Sibley Klein, Attorney at Law  
SIBLEY ANDERSON LEWIS  
121 N. 6th Street  
Alpine, Texas 79830

All persons having claims against this estate, which is currently being administered, are required to present them within the time and in the manner prescribed by law.

DATED September 16, 2022

Frances H. Garcia

By: *Sarah S Klein*  
Sarah Sibley Klein,  
Attorney for Representative



TRANSPecos BANKS

TransPecos Banks continues to grow and needs additional hard working, dedicated employees to fill the following positions. All positions require a high school diploma or GED. Credit and background checks will be performed.

**UNIVERSAL TELLERS** - We are hiring part time tellers for our Alpine and Marathon locations. Must be customer friendly, and able to work quickly and accurately with numbers. Experience a plus.

Compensation based on related experience.

Please apply at  
[www.tranpecosbanks.com](http://www.tranpecosbanks.com)  
Equal Opportunity Employer.  
Member FDIC.

TransPecos Banks,  
P. O. Box 9600, Alpine, Texas  
432-837-0094



**AVAILABLE POSITIONS**



**Technology Service Associate (Terlingua)**

Are you looking for a career as a Service Technician who wants to provide Big Bend Telephone's exceptional customer service all while living and working in the beautiful Terlingua/Lajitas area. Then BBT is the place for you to grow and develop with the ever-changing communications industry and is committed to providing stellar customer service and first-rate technology. The entire Big Bend team plays a role in developing strategies to increase the sales and usage of our products, services and equipment while reinforcing our brand. The ideal candidate will be technically inclined, have a strong desire to succeed and capable of delivering world-class customer service. The job entails networking comprehension, installation and troubleshooting of fixed wireless, fiber to the home, Wi-Fi services, IP Phones, and other customer premise services as well as copper loop installation, repair and troubleshooting. Position requirements are Minimum High School Diploma or GED equivalent with 2 years of experience in a related field. Applicants must possess a valid driver license, have a good driving record and be insurable under the company's insurance policy. There is a \$1,000 signing bonus for new hires (terms and conditions apply) and long-term career potential for the right motivated person.

For more information we invite you to visit <https://www.bigbend.com/about-us/employment/>

Email resume to: [HR@bigbend.com](mailto:HR@bigbend.com)

OR Mail a current resume to

BBT, Attn: HR  
808 N. 5th St.  
Alpine, TX 79830

Please no phone calls.

EOE Employer

Veterans are encouraged to apply

\*Terms and Conditions apply.

BBT participates in E-Verify and promotes a Drug-Free Workplace.

*Classifieds  
really  
work!*

**432.837  
3334**

*or visit us  
online at*

**www.  
alpine  
avala  
nche  
.com**

*Now Hiring*

- **FULL TIME IT**  
SPECIFIC SOFTWARE, PREFER MEDICAL SOFTWARE EXPERIENCE
- **MEDICAL DOCTOR**
- **FAMILY NURSE PRACTITIONER**
- **FULL TIME- NURSE SUPERVISOR**
- **DENTIST**  
Must be licensed in the State of Texas, Alpine Location
- **PART TIME - DENTAL HYGIENIST,**  
Alpine Location
- **PROGRAM COORDINATOR -**  
Collaborate with team to ensure program process and outcomes.
- **HUMAN RESOURCE REP.**  
(Bachelors required)
- **INSURANCE IN NETWORK**
- **STAFF ACCOUNTANT**  
Alpine Location
- **FULL TIME HOUSEKEEPER**  
for Alpine clinic
- **FULL TIME MEDICAL FRONT DESK**  
**RECEPTIONIST**
- **FULL TIME DENTAL FRONT DESK**  
**RECEPTIONIST**

Applications maybe picked up at  
**1605 N. Ft. Davis Hwy.**  
Please call us before arrival  
**432-837-4812**



PREVENTATIVE  
CARE HEALTH SERVICES

For info, please call **432-837-4812**  
Applications can be picked up at  
**our locations or online at:**  
[pchsmedclinic.org](http://pchsmedclinic.org)

**LOOKING**  
for Full time or part time work?



**WE CAN HELP!**

We are currently looking to hire  
**MORNING SHIFTS.**

6am-2pm or 8am-5pm

We can accommodate any schedule you have

- Starting pay - \$10/ per hour
- Closing pays 10% more per hour
- 5% weekend differential
- Benefits- Health and 401K
- Overtime Available
- Paid Vacation
- College Assistance
- Flexible schedule
- Uniform provided
- Discounts on meals

**MAINTENANCE (CUSTODIAN) CREW**

- Basic duties:
- Will keep lobby, back storage, washing machine/mop sink area and kitchen areas clean and neat.
- Collect trash from lobby, kitchen and outdoor containers and dispose of same in dumpster. Keep area around trash and cardboard dumpsters as clean as possible.
- Wash towels and prepare towel bucket for use in front counter.
- Check and clean bathrooms on a regular (hourly) basis.
- Break up and compact cardboard as needed and put in outside blue cardboard dumpster
- Correct any hazardous or unsafe condition observed or notify on-duty manager of the problem
- Assist with truck deliveries as needed. Check freezer and walk-in refrigerator for temperature check, neatness and cleanliness.
- Starting pay is \$13.00 Per hour



**i'm lovin' it**

Text "mcdworksforme" to 36453  
[Mcdonalds.com/careers](http://Mcdonalds.com/careers)  
900 E. Avenue E Alpine Texas



**Village  
farms**  
Greenhouse Grown

**EMPLOYMENT OPPORTUNITIES**

Village Farms is seeking a detailed oriented individual to join our team as Shipping/ Receiving Clerk for our Marfa 2 location.

Responsibilities include loading and unloading, forklift operation, preparation of shipping documents, verify deliveries, maintain warehouse and other general duties. Requirements: Must be willing to work flexible hours including evenings, weekends and holidays, ability to work independently, verbal and written communication skills, working knowledge of computers and forklift experience preferred. Must be able to pass a pre-employment drug screen.

Interested candidates can call **(432)729-3071 Ext. 607** for more information. Resumes should be emailed to [ebaeza@villagefarms.com](mailto:ebaeza@villagefarms.com) or faxed to **(432)375-6241**, applications are also available at Village Farms Security Stations 3 Miles N. Hwy 17 Marfa, TX or 3 Miles S. Hwy 17 FT. Davis, TX.



**GETTING  
married?**

Share your excitement!

Announce your **engagement**  
& then all the **wedding details**  
in **The Alpine Avalanche!**

[www.alpineavalanche.com/site/forms](http://www.alpineavalanche.com/site/forms)



**PLACE YOUR AD ONLINE**



Click on the Classifieds tab at [www.alpineavalanche.com](http://www.alpineavalanche.com)

**THEN CLICK**

+ Place your ad



Trails End is seeking to hire someone part-time for a receptionist position. Please pick up an application or call our office at **432-244-4490**.

**LEGAL NOTICE**

APPLICATION HAS BEEN MADE WITH THE TEXAS ALCOHOLIC BEVERAGE COMMISSION FOR A MIXED BEVERAGE MB LICENSE BY CASA DEL BARCO LLC DBA THE BOATHOUSE, TO BE LOCATED AT 390 IVEY RD., TERLINGUA, BREWSTER COUNTY, TEXAS 79852, OWNED AND OPERATED BY GREGORY K. HAMMER.



**THE CITY OF ALPINE IS HIRING!**

FOR A LIST OF OPEN POSITIONS VISIT THE CITY'S WEBSITE AT [WWW.CITYOFALPINE.COM/EMPLOYMENT](http://WWW.CITYOFALPINE.COM/EMPLOYMENT).



**PORTER'S**  
SINCE 1945

This is our story

Now hiring multiple positions within both Alpine and Fort Davis Locations. Flexible Hours and School Schedule. Please apply at any of our locations in person.

**ALPINE, TEXAS**  
101 E. SUL ROSS AVENUE  
104 N. 2ND STREET  
**(432) 837-1182**

EOE.

**ARE YOU ADVERTISING?**

To grow your business, you must increase **YOUR VISIBILITY.**

to advertise, call us at **432.837.3334**

**Alpine Avalanche**

**Action Heating and Cooling is hiring.**

Starting wage is \$18 to \$20 based on experience. Will train. Service techs earn hours with the state to become licensed. Great work hours with overtime available (if wanted). Great opportunity for the newly high school graduate.

Call **432-386-0275**

**Restaurant Guide**

\$15 a week gets you a spot in our restaurant guide [www.alpineavalanche.com](http://www.alpineavalanche.com)

**ESPRESSO... Y POCO MAS**

Located in Terlingua Ghostown next to La Posada Milagro Guesthouse 432-371-3044 [www.laposadamilagro.net](http://www.laposadamilagro.net) Open 8am - 2pm Mon. thru S.

Menu items (some items change daily): Breakfast burritos, breakfast english muffins, eggs benedict, quiche, breakfast pastries, organic fair trade coffee, espresso, cappuccino /latte /mocha, fresh squeezed juices, smoothies, homemade soups, ham / turkey / chicken breast sandwiches, Reuben sandwiches, meatloaf sandwiches, curry chicken sandwiches, rotisserie chicken & picnic lunches, fruit pies, cobblers, brownies, tres leches cake.

**REATA RESTAURANT**

**COCHINERO:** Beef • Chicken • Shrimp  
**STARTERS:** Tortilla Soup Bowl • Jalapeno and Cilantro Soup • Bacon Wrapped Shrimp with Onion Jam and Pico de Gallo • Bacon Wrapped Asparagus • Tumbleweed Onion Rings with Spicy Serrano Ketchup • Alpine Black Bean & Chicken Nachos

CF Burger with Aged Cheddar Cheese on a Kaiser Roll • Fried Chile Relleno stuffed with Cream Cheese, Corn and Peppers • Carne Asada with Reato's Cheese Enchiladas • Chicken Caesar Wrap with Hand Cut Fries • Tenderloin Tacos with Sundried Tomato Cream Sauce • Grilled Chicken Breast topped with Mango Chutney

**SADDLE PACK COMBINATION:**  
(Your choice of any two items)  
Cup of Tortilla Soup • Cup of Jalapeno and Cilantro Soup  
Cup of Daily Soup • 1/2 Reato Club or Steak Sandwich  
1/2 BLT Sandwich with Peppercorn Bacon

116 N 5th in Alpine, TX  
432-837-4028 | [www.alpinewine.com](http://www.alpinewine.com)  
Lots of food and drinks • Happy hour and live music  
Thursday-Saturday 11:30 to 9  
Sunday- 11:30 to 6

**The Perfect Home for Your Ad**

Get the inside edge on reaching the right customers with an ad in the Alpine Avalanche. From job listings, local news and entertainment, the Alpine Avalanche has what your customers are looking for.

The Alpine Avalanche  
[www.AlpineAvalanche.com](http://www.AlpineAvalanche.com) • 432-837-3334

*Don't miss out!*

**CONT. FROM PAGE 00**

TRACT 310: PANORAMA LEISURE PHASE: 1-C BLK:215 LOT: 52-H GEO: R18520  
TRACT 311: PANORAMA LEISURE PHASE: 1-C BLK:215 LOT: 53-H GEO: R18521  
TRACT 312: PANORAMA LEISURE PHASE: 1-C BLK:215 LOT: 64-H GEO: R18532  
TRACT 313: PANORAMA LEISURE PHASE: 1-C BLK:215 LOT: 69-H GEO: R18537  
TRACT 314: PANORAMA LEISURE PHASE: 1-C BLK:215 LOT: 71-H GEO: R18539  
TRACT 316: PANORAMA LEISURE PHASE: 1-C BLK:215 LOT: 11-J GEO: R18725  
TRACT 317: PANORAMA LEISURE PHASE: 1-C BLK:215 LOT: 10-J GEO: R18724  
TRACT 318: PANORAMA LEISURE PHASE: 1-C BLK:215 LOT: 6-J GEO: R18720  
TRACT 319: PANORAMA LEISURE PHASE: 1-C BLK:215 LOT:122-I GEO: R18708  
TRACT 320: PANORAMA LEISURE PHASE: 1-C BLK:215 LOT: 124-I GEO:R18710  
TRACT 321: PANORAMA LEISURE PHASE: 1-C BLK:215 LOT: 18-J GEO: R18732  
TRACT 322: PANORAMA LEISURE PHASE: 1-C BLK:215 LOT: 16-J GEO: R18730  
TRACT 323: PANORAMA LEISURE PHASE: 1-C BLK:215 LOT: 15-J GEO: R18729  
TRACT 324: PANORAMA LEISURE PHASE: 1-C BLK:215 LOT: 12-J GEO: R18726  
TRACT 325: PANORAMA LEISURE PHASE: 1-C BLK:215 LOT: 21-J GEO: R18735  
TRACT 326: PANORAMA LEISURE PHASE: 1-C BLK:215 LOT: 22-J GEO: R18736  
TRACT 327: PANORAMA LEISURE PHASE: 1-C BLK:215 LOT: 27-J GEO: R18741  
TRACT 328: PANORAMA LEISURE PHASE: 1-C BLK:215 LOT: 26-J GEO: R18740  
TRACT 329: PANORAMA LEISURE PHASE: 1-C BLK:215 LOT: 25-J GEO: R18739  
TRACT 331: PANORAMA LEISURE PHASE: 1-C BLK:215 LOT: 30-G GEO: R18375  
TRACT 332: PANORAMA LEISURE PHASE: 1-C BLK:215 LOT: 36-G GEO: R18381  
TRACT 333: PANORAMA LEISURE PHASE: 1-C BLK:215 LOT: 37-G GEO: R18382  
TRACT 334: PANORAMA LEISURE PHASE: 1-C BLK:215 LOT: 41-G GEO: R18386  
TRACT 335: PANORAMA LEISURE PHASE: 1-C BLK:215 LOT: 44-G GEO: R18389  
TRACT 336: PANORAMA LEISURE PHASE: 1-C BLK:215 LOT: 45-G GEO: R18390  
TRACT 337: PANORAMA LEISURE PHASE: 1-C BLK:215 LOT: 47-G GEO: R18392  
TRACT 338: PANORAMA LEISURE PHASE: 1-C BLK:215 LOT: 48-G GEO: R18393  
TRACT 339: PANORAMA LEISURE PHASE: 1-C BLK:215 LOT: 57-G GEO: R18402  
TRACT 340: PANORAMA LEISURE PHASE: 1-C BLK:215 LOT: 58-G GEO: R18403  
TRACT 342: PANORAMA LEISURE PHASE: 1-C BLK:215 LOT: 2-G GEO: R18347  
TRACT 343: PANORAMA LEISURE PHASE: 1-C BLK:215 LOT: 4-G GEO: R18349  
TRACT 344: PANORAMA LEISURE PHASE: 1-C BLK:215 LOT: 7-G GEO: R18352  
TRACT 345: PANORAMA LEISURE PHASE: 1-C BLK:215 LOT: 14-G GEO: R18359  
TRACT 346: PANORAMA LEISURE PHASE: 1-C BLK:215 LOT: 26-G GEO: R18371  
TRACT 347: PANORAMA LEISURE PHASE: 1-C BLK:215 LOT: 27-G GEO: R18372  
TRACT 350: PANORAMA LEISURE PHASE: 1-C BLK:215 LOT: 6-G GEO: R18351  
TRACT 351: PANORAMA LEISURE PHASE: 1-C BLK:215 LOT: 8-G GEO: R18353  
TRACT 352: PANORAMA LEISURE PHASE: 1-D BLK:215 LOT: 50-P GEO: R18494  
TRACT 354: PANORAMA LEISURE PHASE: 1-C BLK:215 LOT: 31-G GEO: R18376  
TRACT 355: PANORAMA LEISURE PHASE: 1-D BLK:215 LOT: 61-M GEO:R18963  
TRACT 356: PANORAMA LEISURE PHASE: 1-D BLK:215 LOT: 59-M GEO:R18961  
TRACT 358: PANORAMA LEISURE PHASE: 1-D BLK:215 LOT: 51-P GEO: R19100  
TRACT 360: PANORAMA LEISURE PHASE: 1-D BLK:215 LOT: 50-P GEO: R19099  
TRACT 361: PANORAMA LEISURE PHASE: 1-D BLK:215 LOT: 48-P GEO: R19097  
TRACT 363: PANORAMA LEISURE PHASE: 1-D BLK:215 LOT: 43-P GEO: R19092  
TRACT 364: PANORAMA LEISURE PHASE: 1-D BLK:215 LOT: 42-P GEO: R19091  
TRACT 365: PANORAMA LEISURE PHASE: 1-D BLK:215 LOT: 41-P GEO: R19090  
TRACT 366: PANORAMA LEISURE PHASE: 1-D BLK:215 LOT: 37-P GEO: R19086  
TRACT 367: PANORAMA LEISURE PHASE: 1-D BLK:215 LOT: 39-P GEO: R19088  
TRACT 368: PANORAMA LEISURE PHASE: 1-D BLK:215 LOT: 36-P GEO: R19085  
TRACT 369: PANORAMA LEISURE PHASE: 1-D BLK:215 LOT: 34-P GEO: R19083  
TRACT 370: PANORAMA LEISURE PHASE: 1-D BLK:215 LOT: 32-P GEO: R19081  
TRACT 371: PANORAMA LEISURE PHASE: 1-D BLK:215 LOT: 30-P GEO: R19079  
TRACT 372: PANORAMA LEISURE PHASE: 1-D BLK:215 LOT: 27-P GEO: R19076  
TRACT 373: PANORAMA LEISURE PHASE: 1-D BLK:215 LOT: 24-P GEO: R19073  
TRACT 374: PANORAMA LEISURE PHASE: 1-D BLK:215 LOT: 61-O GEO: R19046  
TRACT 375: PANORAMA LEISURE PHASE: 1-D BLK:215 LOT: 20-P GEO: R19069  
TRACT 376: PANORAMA LEISURE PHASE: 1-D BLK:215 LOT: 35-O GEO: R19021  
TRACT 378: PANORAMA LEISURE PHASE: 1-D BLK:215 LOT: 37-O GEO: R19023  
TRACT 379: PANORAMA LEISURE PHASE: 1-D BLK:215 LOT: 39-O GEO: R19025  
TRACT 380: PANORAMA LEISURE PHASE: 1-D BLK:215 LOT: 23-O GEO: R19009  
TRACT 381: PANORAMA LEISURE PHASE: 1-D BLK:215 LOT: 64-L GEO: R19000  
TRACT 382: PANORAMA LEISURE PHASE: 1-D BLK:215 LOT: 18-O GEO: R19004  
TRACT 383: PANORAMA LEISURE PHASE: 1-D BLK:215 LOT: 22-O GEO: R19008  
TRACT 384: PANORAMA LEISURE PHASE: 1-D BLK:215 LOT: 12-O GEO: R18998  
TRACT 385: PANORAMA LEISURE PHASE: 1-D BLK:215 LOT: 57-L GEO: R18939  
TRACT 386: PANORAMA LEISURE PHASE: 1-D BLK:215 LOT: 54-M GEO:R18956  
TRACT 389: PANORAMA LEISURE PHASE: 1-D BLK:215 LOT: 58-N GEO: R18980  
TRACT 390: PANORAMA LEISURE PHASE: 1-D BLK:215 LOT: 60-N GEO: R18982  
TRACT 391: PANORAMA LEISURE PHASE: 1-D BLK:215 LOT: 61-N GEO: R18983  
TRACT 392: PANORAMA LEISURE PHASE: 1-D BLK:215 LOT: 6-O GEO: R18992  
TRACT 393: PANORAMA LEISURE PHASE: 1-D BLK:215 LOT: 25-O GEO: R19011  
TRACT 394: PANORAMA LEISURE PHASE: 1-D BLK:215 LOT: 29-O GEO: R19015  
TRACT 395: PANORAMA LEISURE PHASE: 1-D BLK:215 LOT: 30-O GEO: R19016  
TRACT 396: PANORAMA LEISURE PHASE: 1-D BLK:215 LOT: 32-O GEO: R19018  
TRACT 397: PANORAMA LEISURE PHASE: 1-D BLK:215 LOT: 40-O GEO: R19026  
TRACT 398: PANORAMA LEISURE PHASE: 1-D BLK:215 LOT: 44-O GEO: R19029

TRACT 399: PANORAMA LEISURE PHASE: 1-D BLK:215 LOT: 46-O GEO: R19031  
TRACT 400: PANORAMA LEISURE PHASE: 1-D BLK:215 LOT: 57-O GEO: R19042  
TRACT 402: PANORAMA LEISURE PHASE: 1-D BLK:215 LOT: 6-P GEO: R19055  
TRACT 403: PANORAMA LEISURE PHASE: 1-D BLK:215 LOT: 8-P GEO: R19057  
TRACT 404: PANORAMA LEISURE PHASE: 1-D BLK:215 LOT: 10-P GEO: R19059  
TRACT 405: PANORAMA LEISURE PHASE: 1-D BLK:215 LOT: 12-P GEO: R19061  
TRACT 406: PANORAMA LEISURE PHASE: 1-D BLK:215 LOT: 14-P GEO: R19063  
TRACT 407: PANORAMA LEISURE PHASE: 1-D BLK:215 LOT: 16-P GEO: R19065  
TRACT 408: PANORAMA LEISURE PHASE: 1-D BLK:215 LOT: 17-P GEO: R19066  
TRACT 409: PANORAMA LEISURE PHASE: 1-D BLK:215 LOT: 15-P GEO: R19064  
TRACT 410: PANORAMA LEISURE PHASE: 1-D BLK:215 LOT: 7-P GEO: R19056  
TRACT 411: PANORAMA LEISURE PHASE: 1-D BLK:215 LOT: 9-P GEO: R19058  
TRACT 412: PANORAMA LEISURE PHASE: 1-D BLK:215 LOT: 18-P GEO: R19067  
TRACT 413: PANORAMA LEISURE PHASE: 1-D BLK:215 LOT: 27-K GEO: R18867  
TRACT 414: PANORAMA LEISURE PHASE: 1-D BLK:215 LOT: 24-K GEO: R18864  
TRACT 415: PANORAMA LEISURE PHASE: 1-D BLK:215 LOT: 21-K GEO: R18861  
TRACT 417: PANORAMA LEISURE PHASE: 1-D BLK:215 LOT: 16-K GEO: R18856  
TRACT 420: PANORAMA LEISURE PHASE: 1-D BLK:215 LOT: 7-K GEO: R18847  
TRACT 421: PANORAMA LEISURE PHASE: 1-D BLK:215 LOT: 55-L GEO: R18937  
TRACT 422: PANORAMA LEISURE PHASE: 1-D BLK:215 LOT: 62-L GEO: R18944  
TRACT 424: PANORAMA LEISURE PHASE: 1-D BLK:215 LOT: 9-L GEO: R18909  
TRACT 425: PANORAMA LEISURE PHASE: 1-D BLK:215 LOT: 17-L GEO: R18913  
TRACT 426: PANORAMA LEISURE PHASE: 1-D BLK:215 LOT:25-L GEO: R18917  
TRACT 427: PANORAMA LEISURE PHASE: 1-D BLK:215 LOT: 27-L GEO: R18918  
TRACT 428: PANORAMA LEISURE PHASE: 1-D BLK:215 LOT: 35-L GEO: R18922  
TRACT 429: PANORAMA LEISURE PHASE: 1-D BLK:215 LOT: 45-L GEO: R18927  
TRACT 430: PANORAMA LEISURE PHASE: 1-D BLK:215 LOT: 47-L GEO: R18929  
TRACT 432: PANORAMA LEISURE PHASE: 1-D BLK:215 LOT: 37-K GEO: R18877  
TRACT 433: PANORAMA LEISURE PHASE: 1-D BLK:215 LOT: 36-K GEO: R18876  
TRACT 436: PANORAMA LEISURE PHASE: 1-D BLK:215 LOT: 44-K GEO: R18884  
TRACT 437: PANORAMA LEISURE PHASE: 1-D BLK:215 LOT: 48-K GEO: R18886  
TRACT 438: PANORAMA LEISURE PHASE: 1-D BLK:215 LOT: 46-K GEO: R18888  
TRACT 439: PANORAMA LEISURE PHASE: 1-D BLK:215 LOT: 49-K GEO: R18889  
TRACT 440: PANORAMA LEISURE PHASE: 1-D BLK:215 LOT: 53-K GEO: R18893  
TRACT 441: PANORAMA LEISURE PHASE: 1-D BLK:215 LOT: 54-K GEO: R18894  
TRACT 442: PANORAMA LEISURE PHASE: 1-D BLK:215 LOT: 13-L GEO: R18911  
TRACT 443: PANORAMA LEISURE PHASE: 1-D BLK:215 LOT:115-J GEO: R18823  
TRACT 444: PANORAMA LEISURE PHASE: 1-D BLK:215 LOT: 60-K GEO: R18900  
TRACT 445: PANORAMA LEISURE PHASE: 1-D BLK:215 LOT: 64-K GEO: R18904  
TRACT 446: PANORAMA LEISURE PHASE: 1-D BLK:215 LOT: 25-K GEO: R18865  
TRACT 447: PANORAMA LEISURE PHASE: 1-D BLK:215 LOT: 91-E GEO: R18180

or upon the written request of said defendants or their attorney, a sufficient portion thereof to satisfy said judgment, interest, penalties, and costs; subject, however to the right of redemption by the defendants or any person having an interest therein, to redeem said property, or their interest therein, in the manner provided by law, and subject to any other and further rights to which the defendants or anyone interested therein may be entitled, under the provisions of law. Said sale to be made by me to satisfy the judgment rendered in the above styled and numbered cause, together with interest, penalties and costs of suit, and the proceeds of said sale to be applied to the satisfaction thereof, and the remainder, if any, to be applied as the law directs.

I have appointed the following as agent to conduct the sale, to-wit:

Perdue, Brandon, Fielder, Collins & Mott, L.L.P.  
Attorneys at Law  
1031 Andrews Hwy, Ste. 210  
Midland, Texas 79701  
(432) 522-2427

THIS SALE IS BEING CONDUCTED PURSUANT TO STATUTORY OR JUDICIAL REQUIREMENTS. BIDDERS WILL BID ON THE RIGHTS, TITLE, AND INTERESTS, IF ANY, IN THE REAL PROPERTY OFFERED.

THE PROPERTY IS SOLD AS IS, WHERE IS, AND WITHOUT ANY WARRANTY, EITHER EXPRESS OR IMPLIED. NEITHER THE COUNTY NOR THE SHERIFF'S DEPARTMENT WARRANTS OR MAKES ANY REPRESENTATIONS ABOUT THE PROPERTY'S TITLE, CONDITION, HABITABILITY, MERCHANTABILITY, OR FITNESS FOR A PARTICULAR PURPOSE. BUYERS ASSUME ALL RISKS.

IN SOME SITUATIONS, A LOT OF FIVE ACRES OR LESS IS PRESUMED TO BE INTENDED FOR RESIDENTIAL USE. HOWEVER, IF THE PROPERTY LACKS WATER OR WASTEWATER SERVICE, THE PROPERTY MAY NOT QUALIFY FOR RESIDENTIAL USE. A POTENTIAL BUYER WHO WOULD LIKE MORE INFORMATION SHOULD MAKE ADDITIONAL INQUIRIES OR CONSULT WITH PRIVATE COUNSEL.

At the time the sale begins, all bidders at the sale must be registered with the above-named agent conducting the sale and be eligible to bid according to the Property Tax Code.

Dated at Alpine, Brewster County, Texas, this the 31st day of August, 2022.

/s/ Ronny Dodson  
Ronny Dodson,  
SHERIFF of BREWSTER COUNTY



**NOTICE OF SALE**

THE STATE OF TEXAS                   §           BY VIRTUE OF AN ORDER OF SALE  
   §  
   §  
 COUNTY OF BREWSTER               §           DATED: August 30, 2022

and issued pursuant to a judgment decree of the District Court, 394th Judicial District, of Brewster County, Texas, by the District Clerk on said date, and to me directed and delivered as Sheriff of said County, I have on the 31st day of August, 2022, seized, levied upon, and will on the first Tuesday in October, 2022, the same being the 4th day of said month, at the Courthouse door, of said County in the City of Alpine, beginning at 10:00 o'clock a.m., on said day, proceed to sell for cash to the highest bidder all the right, title and interest of the defendants in such suit to the following described real estate levied upon as the property of said defendants, the same lying and being situated in the County of Brewster and the State of Texas, to-wit:

**CAUSE NO. TXB21265; ALPINE INDEPENDENT SCHOOL DISTRICT V. ETHEL JEFFERSON ET AL.**

- TRACT 2: PANORAMA LEISURE PHASE: 1-A BLK: 215 LOT: 95-C GEO: R17939
- TRACT 4: PANORAMA LEISURE PHASE: 1-A BLK: 215 LOT: 101-C GEO: R17945
- TRACT 5: PANORAMA LEISURE PHASE: 1-A BLK: 215 LOT: 107-C GEO: R17951
- TRACT 6: PANORAMA LEISURE PHASE: 1-A BLK: 215 LOT: 108-C GEO: R17952
- TRACT 7: PANORAMA LEISURE PHASE: 1-A BLK: 215 LOT: 109-C GEO: R17953
- TRACT 8: PANORAMA LEISURE PHASE: 1-A BLK: 215 LOT: 119-C GEO: R17963
- TRACT 9: PANORAMA LEISURE PHASE: 1-A BLK: 215 LOT: 121-C GEO: R17965
- TRACT 11: PANORAMA LEISURE PHASE: 1-A BLK: 215 LOT: 31-B GEO: R17755
- TRACT 12: PANORAMA LEISURE PHASE: 1-A BLK: 215 LOT: 86-B GEO: R17806
- TRACT 13: PANORAMA LEISURE PHASE: 1-A BLK: 215 LOT: 24-A GEO: R17674
- TRACT 14: PANORAMA LEISURE PHASE: 1-A BLK: 215 LOT: 40-A GEO: R17682
- TRACT 15: PANORAMA LEISURE PHASE: 1-A BLK: 215 LOT: 88-C GEO: R17932
- TRACT 17: PANORAMA LEISURE PHASE: 1-A BLK: 215 LOT: 116-C GEO: R17960
- TRACT 18: PANORAMA LEISURE PHASE: 1-A BLK: 215 LOT: 5-C GEO: R17853
- TRACT 20: PANORAMA LEISURE PHASE: 1-A BLK: 215 LOT: 30-C GEO: R17878
- TRACT 21: PANORAMA LEISURE PHASE: 1-A BLK: 215 LOT: 50-C GEO: R17898
- TRACT 22: PANORAMA LEISURE PHASE: 1-A BLK: 215 LOT: 70-C GEO: R17918
- TRACT 23: PANORAMA LEISURE PHASE: 1-A BLK: 215 LOT: 86-C GEO: R17930
- TRACT 26: PANORAMA LEISURE PHASE: 1-A BLK: 215 LOT: 90-C GEO: R17934
- TRACT 27: PANORAMA LEISURE PHASE: 1-A BLK: 215 LOT: 91-C GEO: R17935
- TRACT 28: PANORAMA LEISURE PHASE: 1-A BLK: 215 LOT: 67-B GEO: R17791
- TRACT 29: PANORAMA LEISURE PHASE: 1-A BLK: 215 LOT: 104-A GEO: R17712
- TRACT 31: PANORAMA LEISURE PHASE: 1-A BLK: 215 LOT: 112-A GEO: R17716
- TRACT 33: PANORAMA LEISURE PHASE: 1-A BLK: 215 LOT: 8-B GEO: R17732
- TRACT 35: PANORAMA LEISURE PHASE: 1-A BLK: 215 LOT: 14-B GEO: R17738
- TRACT 39: PANORAMA LEISURE PHASE: 1-A BLK: 215 LOT: 36-B GEO: R17760
- TRACT 41: PANORAMA LEISURE PHASE: 1-A BLK: 215 LOT: 57-B GEO: R17781
- TRACT 43: PANORAMA LEISURE PHASE: 1-A BLK: 215 LOT: 58-B GEO: R17782
- TRACT 44: PANORAMA LEISURE PHASE: 1-A BLK: 215 LOT: 77-B GEO: R17797
- TRACT 46: PANORAMA LEISURE PHASE: 1-A BLK: 215 LOT: 85-B GEO: R17805
- TRACT 48: PANORAMA LEISURE PHASE: 1-A BLK: 215 LOT: 95-B GEO: R17815
- TRACT 49: PANORAMA LEISURE PHASE: 1-A BLK: 215 LOT: 98-B GEO: R17818
- TRACT 50: PANORAMA LEISURE PHASE: 1-A BLK: 215 LOT: 106-B GEO: R17826
- TRACT 51: PANORAMA LEISURE PHASE: 1-A BLK: 215 LOT: 110-B GEO: R17830
- TRACT 52: PANORAMA LEISURE PHASE: 1-A BLK: 215 LOT: 111-B GEO: R17831
- TRACT 53: PANORAMA LEISURE PHASE: 1-A BLK: 215 LOT: 113-B GEO: R17833
- TRACT 54: PANORAMA LEISURE PHASE: 1-A BLK: 215 LOT: 114-B GEO: R17834
- TRACT 55: PANORAMA LEISURE PHASE: 1-A BLK: 215 LOT: 18-A GEO: R17671
- TRACT 56: PANORAMA LEISURE PHASE: 1-A BLK: 215 LOT: 52-A GEO: R17688
- TRACT 57: PANORAMA LEISURE PHASE: 1-A BLK: 215 LOT: 66-A GEO: R17694
- TRACT 58: PANORAMA LEISURE PHASE: 1-A BLK: 215 LOT: 64-A GEO: R17695
- TRACT 59: PANORAMA LEISURE PHASE: 1-A BLK: 215 LOT: 68-A GEO: R17696
- TRACT 60: PANORAMA LEISURE PHASE: 1-A BLK: 215 LOT: 92-A GEO: R17706
- TRACT 61: PANORAMA LEISURE PHASE: 1-A BLK: 215 LOT: 96-A GEO: R17708
- TRACT 62: PANORAMA LEISURE PHASE: 1-A BLK: 215 LOT: 6-A GEO: R17665
- TRACT 63: PANORAMA LEISURE PHASE: 1-B BLK: 215 LOT: 106-F GEO: R18321
- TRACT 64: PANORAMA LEISURE PHASE: 1-B BLK: 215 LOT: 40-F GEO: R18259
- TRACT 65: PANORAMA LEISURE PHASE: 1-B BLK: 215 LOT: 10-F GEO: R18229
- TRACT 66: PANORAMA LEISURE PHASE: 1-B BLK: 215 LOT: 54-F GEO: R18273
- TRACT 67: PANORAMA LEISURE PHASE: 1-B BLK: 215 LOT: 26-E GEO: R18122
- TRACT 68: PANORAMA LEISURE PHASE: 1-B BLK: 215 LOT: 114-E GEO: R18205
- TRACT 69: PANORAMA LEISURE PHASE: 1-B BLK: 215 LOT: 80-E GEO: R18174
- TRACT 70: PANORAMA LEISURE PHASE: 1-B BLK: 215 LOT: 86-E GEO: R18177
- TRACT 71: PANORAMA LEISURE PHASE: 1-B BLK: 215 LOT: 56-E GEO: R18152
- TRACT 72: PANORAMA LEISURE PHASE: 1-B BLK: 215 LOT: 36-E GEO: R18132
- TRACT 73: PANORAMA LEISURE PHASE: 1-B BLK: 215 LOT: 106-D GEO: R18074
- TRACT 74: PANORAMA LEISURE PHASE: 1-B BLK: 215 LOT: 48-D GEO: R18021
- TRACT 76: PANORAMA LEISURE PHASE: 1-B BLK: 215 LOT: 117-F GEO: R18332
- TRACT 77: PANORAMA LEISURE PHASE: 1-B BLK: 215 LOT: 123-E GEO: R18214
- TRACT 79: PANORAMA LEISURE PHASE: 1-B BLK: 215 LOT: 62-E GEO: R18158
- TRACT 80: PANORAMA LEISURE PHASE: 1-B BLK: 215 LOT: 12-E GEO: R18108
- TRACT 81: PANORAMA LEISURE PHASE: 1-B BLK: 215 LOT: 1-D GEO: R17974
- TRACT 82: PANORAMA LEISURE PHASE: 1-B BLK: 215 LOT: 2-D GEO: R17975
- TRACT 83: PANORAMA LEISURE PHASE: 1-B BLK: 215 LOT: 11-D GEO: R17984
- TRACT 84: PANORAMA LEISURE PHASE: 1-B BLK: 215 LOT: 116-D GEO: R18084
- TRACT 85: PANORAMA LEISURE PHASE: 1-B BLK: 215 LOT: 120-D GEO: R18088
- TRACT 87: PANORAMA LEISURE PHASE: 1-B BLK: 215 LOT: 123-D GEO: R18091
- TRACT 88: PANORAMA LEISURE PHASE: 1-B BLK: 215 LOT: 3-E GEO: R18099
- TRACT 89: PANORAMA LEISURE PHASE: 1-B BLK: 215 LOT: 14-E GEO: R18110
- TRACT 90: PANORAMA LEISURE PHASE: 1-B BLK: 215 LOT: 15-E GEO: R18111
- TRACT 92: PANORAMA LEISURE PHASE: 1-B BLK: 215 LOT: 18-E GEO: R18114
- TRACT 93: PANORAMA LEISURE PHASE: 1-B BLK: 215 LOT: 20-E GEO: R18116
- TRACT 94: PANORAMA LEISURE PHASE: 1-B BLK: 215 LOT: 68-D GEO: R18041
- TRACT 95: PANORAMA LEISURE PHASE: 1-B BLK: 215 LOT: 71-D GEO: R18044
- TRACT 97: PANORAMA LEISURE PHASE: 1-B BLK: 215 LOT: 89-D GEO: R18057
- TRACT 98: PANORAMA LEISURE PHASE: 1-B BLK: 215 LOT: 92-D GEO: R18060
- TRACT 99: PANORAMA LEISURE PHASE: 1-B BLK: 215 LOT: 94-D GEO: R18062
- TRACT 100: PANORAMA LEISURE PHASE: 1-B BLK: 215 LOT: 100-D GEO: R18068
- TRACT 101: PANORAMA LEISURE PHASE: 1-B BLK: 215 LOT: 105-D GEO: R18073
- TRACT 102: PANORAMA LEISURE PHASE: 1-B BLK: 215 LOT: 24-E GEO: R18120
- TRACT 103: PANORAMA LEISURE PHASE: 1-B BLK: 215 LOT: 27-E GEO: R18123
- TRACT 104: PANORAMA LEISURE PHASE: 1-B BLK: 215 LOT: 35-E GEO: R18131
- TRACT 105: PANORAMA LEISURE PHASE: 1-B BLK: 215 LOT: 37-E GEO: R18133
- TRACT 106: PANORAMA LEISURE PHASE: 1-B BLK: 215 LOT: 40-E GEO: R18136
- TRACT 108: PANORAMA LEISURE PHASE: 1-B BLK: 215 LOT: 44-E GEO: R18140
- TRACT 109: PANORAMA LEISURE PHASE: 1-B BLK: 215 LOT: 49-E GEO: R18145
- TRACT 110: PANORAMA LEISURE PHASE: 1-B BLK: 215 LOT: 64-E GEO: R18160
- TRACT 111: PANORAMA LEISURE PHASE: 1-B BLK: 215 LOT: 65-E GEO: R18161
- TRACT 112: PANORAMA LEISURE PHASE: 1-B BLK: 215 LOT: 66-E GEO: R18162
- TRACT 115: PANORAMA LEISURE PHASE: 1-B BLK: 215 LOT: 88-E GEO: R18179
- TRACT 116: PANORAMA LEISURE PHASE: 1-B BLK: 215 LOT: 89-E GEO: R18180
- TRACT 117: PANORAMA LEISURE PHASE: 1-B BLK: 215 LOT: 90-E GEO: R18181
- TRACT 118: PANORAMA LEISURE PHASE: 1-B BLK: 215 LOT: 93-E GEO: R18184
- TRACT 119: PANORAMA LEISURE PHASE: 1-B BLK: 215 LOT: 94-E GEO: R18185
- TRACT 120: PANORAMA LEISURE PHASE: 1-B BLK: 215 LOT: 95-E GEO: R18186
- TRACT 121: PANORAMA LEISURE PHASE: 1-B BLK: 215 LOT: 109-E GEO: R18200
- TRACT 122: PANORAMA LEISURE PHASE: 1-B BLK: 215 LOT: 110-E GEO: R18201
- TRACT 124: PANORAMA LEISURE PHASE: 1-B BLK: 215 LOT: 113-E GEO: R18204
- TRACT 125: PANORAMA LEISURE PHASE: 1-B BLK: 215 LOT: 121-E GEO: R18212
- TRACT 126: PANORAMA LEISURE PHASE: 1-B BLK: 215 LOT: 124-E GEO: R18215
- TRACT 127: PANORAMA LEISURE PHASE: 1-B BLK: 215 LOT: 11-F GEO: R18230
- TRACT 128: PANORAMA LEISURE PHASE: 1-B BLK: 215 LOT: 17-F GEO: R18236
- TRACT 129: PANORAMA LEISURE PHASE: 1-B BLK: 215 LOT: 20-F GEO: R18239
- TRACT 130: PANORAMA LEISURE PHASE: 1-B BLK: 215 LOT: 21-F GEO: R18240
- TRACT 131: PANORAMA LEISURE PHASE: 1-B BLK: 215 LOT: 22-F GEO: R18241
- TRACT 132: PANORAMA LEISURE PHASE: 1-B BLK: 215 LOT: 30-F GEO: R18249
- TRACT 133: PANORAMA LEISURE PHASE: 1-B BLK: 215 LOT: 46-F GEO: R18265
- TRACT 137: PANORAMA LEISURE PHASE: 1-B BLK: 215 LOT: 69-F GEO: R18288
- TRACT 139: PANORAMA LEISURE PHASE: 1-B BLK: 215 LOT: 82-F GEO: R18301
- TRACT 140: PANORAMA LEISURE PHASE: 1-B BLK: 215 LOT: 16-D GEO: R17989
- TRACT 141: PANORAMA LEISURE PHASE: 1-B BLK: 215 LOT: 20-D GEO: R17993
- TRACT 142: PANORAMA LEISURE PHASE: 1-B BLK: 215 LOT: 32-D GEO: R18005
- TRACT 143: PANORAMA LEISURE PHASE: 1-B BLK: 215 LOT: 43-D GEO: R18016
- TRACT 146: PANORAMA LEISURE PHASE: 1-B BLK: 215 LOT: 54-D GEO: R18027
- TRACT 147: PANORAMA LEISURE PHASE: 1-B BLK: 215 LOT: 56-D GEO: R18029
- TRACT 148: PANORAMA LEISURE PHASE: 1-B BLK: 215 LOT: 101-E GEO: R18192
- TRACT 149: PANORAMA LEISURE PHASE: 1-B BLK: 215 LOT: 62-D GEO: R18035
- TRACT 150: PANORAMA LEISURE PHASE: 1-B BLK: 215 LOT: 104-F GEO: R18321
- TRACT 151: PANORAMA LEISURE PHASE: 1-B BLK: 215 LOT: 111-F GEO: R18326

- TRACT 152: PANORAMA LEISURE PHASE: 1-B BLK: 215 LOT: 113-F GEO: R18328
- TRACT 153: PANORAMA LEISURE PHASE: 1-B BLK: 215 LOT: 116-F GEO: R18331
- TRACT 157: PANORAMA LEISURE PHASE: 1-B BLK: 215 LOT: 89-F GEO: R18304
- TRACT 158: PANORAMA LEISURE PHASE: 1-B BLK: 215 LOT: 92-F GEO: R18307
- TRACT 159: PANORAMA LEISURE PHASE: 1-B BLK: 215 LOT: 96-F GEO: R18311
- TRACT 160: PANORAMA LEISURE PHASE: 1-B BLK: 215 LOT: 97-F GEO: R18312
- TRACT 161: PANORAMA LEISURE PHASE: 1-C BLK: 215 LOT: 103-G GEO: R18443
- TRACT 162: PANORAMA LEISURE PHASE: 1-C BLK: 215 LOT: 105-G GEO: R18445
- TRACT 163: PANORAMA LEISURE PHASE: 1-C BLK: 215 LOT: 106-G GEO: R18446
- TRACT 164: PANORAMA LEISURE PHASE: 1-C BLK: 215 LOT: 108-G GEO: R18448
- TRACT 165: PANORAMA LEISURE PHASE: 1-C BLK: 215 LOT: 112-G GEO: R18452
- TRACT 166: PANORAMA LEISURE PHASE: 1-C BLK: 215 LOT: 114-G GEO: R18454
- TRACT 167: PANORAMA LEISURE PHASE: 1-C BLK: 215 LOT: 115-G GEO: R18455
- TRACT 168: PANORAMA LEISURE PHASE: 1-C BLK: 215 LOT: 116-G GEO: R18456
- TRACT 169: PANORAMA LEISURE PHASE: 1-C BLK: 215 LOT: 119-G GEO: R18459
- TRACT 170: PANORAMA LEISURE PHASE: 1-C BLK: 215 LOT: 121-G GEO: R18461
- TRACT 172: PANORAMA LEISURE PHASE: 1-C BLK: 215 LOT: 5-H GEO: R18473
- TRACT 173: PANORAMA LEISURE PHASE: 1-C BLK: 215 LOT: 9-H GEO: R18477
- TRACT 174: PANORAMA LEISURE PHASE: 1-C BLK: 215 LOT: 13-H GEO: R18483
- TRACT 175: PANORAMA LEISURE PHASE: 1-C BLK: 215 LOT: 15-H GEO: R18481
- TRACT 176: PANORAMA LEISURE PHASE: 1-C BLK: 215 LOT: 17-H GEO: R18485
- TRACT 177: PANORAMA LEISURE PHASE: 1-C BLK: 215 LOT: 27-H GEO: R18495
- TRACT 178: PANORAMA LEISURE PHASE: 1-C BLK: 215 LOT: 28-H GEO: R18496
- TRACT 180: PANORAMA LEISURE PHASE: 1-C BLK: 215 LOT: 34-H GEO: R18502
- TRACT 181: PANORAMA LEISURE PHASE: 1-C BLK: 215 LOT: 91-G GEO: R18431
- TRACT 183: PANORAMA LEISURE PHASE: 1-C BLK: 215 LOT: 102-G GEO: R18442
- TRACT 184: PANORAMA LEISURE PHASE: 1-C BLK: 215 LOT: 108-I GEO: R18694
- TRACT 185: PANORAMA LEISURE PHASE: 1-C BLK: 215 LOT: 114-I GEO: R18700
- TRACT 186: PANORAMA LEISURE PHASE: 1-C BLK: 215 LOT: 17-G GEO: R18362
- TRACT 187: PANORAMA LEISURE PHASE: 1-C BLK: 215 LOT: 88-J GEO: R18802
- TRACT 188: PANORAMA LEISURE PHASE: 1-C BLK: 215 LOT: 109-J GEO: R18817
- TRACT 189: PANORAMA LEISURE PHASE: 1-C BLK: 215 LOT: 113-J GEO: R18821
- TRACT 190: PANORAMA LEISURE PHASE: 1-C BLK: 215 LOT: 116-J GEO: R18824
- TRACT 191: PANORAMA LEISURE PHASE: 1-C BLK: 215 LOT: 83-G GEO: R18428
- TRACT 192: PANORAMA LEISURE PHASE: 1-C BLK: 215 LOT: 117-G GEO: R18457
- TRACT 194: PANORAMA LEISURE PHASE: 1-C BLK: 215 LOT: 121-J GEO: R18829
- TRACT 195: PANORAMA LEISURE PHASE: 1-D BLK: 215 LOT: 6-K GEO: R18846
- TRACT 197: PANORAMA LEISURE PHASE: 1-C BLK: 215 LOT: 40-J GEO: R18754
- TRACT 198: PANORAMA LEISURE PHASE: 1-C BLK: 215 LOT: 42-J GEO: R18756
- TRACT 199: PANORAMA LEISURE PHASE: 1-C BLK: 215 LOT: 45-J GEO: R18759
- TRACT 200: PANORAMA LEISURE PHASE: 1-C BLK: 215 LOT: 48-J GEO: R18762
- TRACT 201: PANORAMA LEISURE PHASE: 1-C BLK: 215 LOT: 49-J GEO: R18763
- TRACT 202: PANORAMA LEISURE PHASE: 1-C BLK: 215 LOT: 51-J GEO: R18765
- TRACT 204: PANORAMA LEISURE PHASE: 1-C BLK: 215 LOT: 55-J GEO: R18769
- TRACT 205: PANORAMA LEISURE PHASE: 1-C BLK: 215 LOT: 60-J GEO: R18774
- TRACT 206: PANORAMA LEISURE PHASE: 1-C BLK: 215 LOT: 63-J GEO: R18777
- TRACT 207: PANORAMA LEISURE PHASE: 1-C BLK: 215 LOT: 64-J GEO: R18778
- TRACT 209: PANORAMA LEISURE PHASE: 1-C BLK: 215 LOT: 68-J GEO: R18782
- TRACT 212: PANORAMA LEISURE PHASE: 1-C BLK: 215 LOT: 75-J GEO: R18789
- TRACT 213: PANORAMA LEISURE PHASE: 1-C BLK: 215 LOT: 76-J GEO: R18790
- TRACT 215: PANORAMA LEISURE PHASE: 1-C BLK: 215 LOT: 82-J GEO: R18796
- TRACT 218: PANORAMA LEISURE PHASE: 1-C BLK: 215 LOT: 85-J GEO: R18799
- TRACT 219: PANORAMA LEISURE PHASE: 1-C BLK: 215 LOT: 41-J GEO: R18755
- TRACT 220: PANORAMA LEISURE PHASE: 1-C BLK: 215 LOT: 99-G GEO: R18439
- TRACT 221: PANORAMA LEISURE PHASE: 1-C BLK: 215 LOT: 122-G GEO: R18462
- TRACT 222: PANORAMA LEISURE PHASE: 1-C BLK: 215 LOT: 52-I GEO: R18643
- TRACT 223: PANORAMA LEISURE PHASE: 1-C BLK: 215 LOT: 62-I GEO: R18653
- TRACT 224: PANORAMA LEISURE PHASE: 1-C BLK: 215 LOT: 73-I GEO: R18664
- TRACT 225: PANORAMA LEISURE PHASE: 1-C BLK: 215 LOT: 104-I GEO: R18690
- TRACT 226: PANORAMA LEISURE PHASE: 1-C BLK: 215 LOT: 1-J GEO: R18715
- TRACT 228: PANORAMA LEISURE PHASE: 1-C BLK: 215 LOT: 35-J GEO: R18749
- TRACT 229: PANORAMA LEISURE PHASE: 1-C BLK: 215 LOT: 38-J GEO: R18752
- TRACT 230: PANORAMA LEISURE PHASE: 1-C BLK: 215 LOT: 34-I GEO: R18379
- TRACT 231: PANORAMA LEISURE PHASE: 1-C BLK: 215 LOT: 95-H GEO: R18558
- TRACT 234: PANORAMA LEISURE PHASE: 1-C BLK: 215 LOT: 105-H GEO: R18568
- TRACT 235: PANORAMA LEISURE PHASE: 1-C BLK: 215 LOT: 106-H GEO: R18569
- TRACT 236: PANORAMA LEISURE PHASE: 1-C BLK: 215 LOT: 115-H GEO: R18578
- TRACT 237: PANORAMA LEISURE PHASE: 1-C BLK: 215 LOT: 116-H GEO: R18579
- TRACT 238: PANORAMA LEISURE PHASE: 1-C BLK: 215 LOT: 123-H GEO: R18586
- TRACT 239: PANORAMA LEISURE PHASE: 1-C BLK: 215 LOT: 124-H GEO: R18587
- TRACT 240: PANORAMA LEISURE PHASE: 1-C BLK: 215 LOT: 3-I GEO: R18594
- TRACT 241: PANORAMA LEISURE PHASE: 1-C BLK: 215 LOT: 5-I GEO: R18596
- TRACT 242: PANORAMA LEISURE PHASE: 1-C BLK: 215 LOT: 8-I GEO: R18599
- TRACT 243: PANORAMA LEISURE PHASE: 1-C BLK: 215 LOT: 9-I GEO: R18600
- TRACT 244: PANORAMA LEISURE PHASE: 1-C BLK: 215 LOT: 12-I GEO: R18603
- TRACT 245: PANORAMA LEISURE PHASE: 1-C BLK: 215 LOT: 13-I GEO: R18604
- TRACT 247: PANORAMA LEISURE PHASE: 1-C BLK: 215 LOT: 34-I GEO: R18610
- TRACT 248: PANORAMA LEISURE PHASE: 1-C BLK: 215 LOT: 24-I GEO: R18615
- TRACT 249: PANORAMA LEISURE PHASE: 1-C BLK: 215 LOT: 26-I GEO: R18617
- TRACT 250: PANORAMA LEISURE PHASE: 1-C BLK: 215 LOT: 28-I GEO: R18619
- TRACT 251: PANORAMA LEISURE PHASE: 1-C BLK: 215 LOT: 29-I GEO: R18620
- TRACT 252: PANORAMA LEISURE PHASE: 1-C BLK: 215 LOT: 30-I GEO: R18621
- TRACT 253: PANORAMA LEISURE PHASE: 1-C BLK: 215 LOT: 35-I GEO: R18626
- TRACT 254: PANORAMA LEISURE PHASE: 1-C BLK: 215 LOT: 40-I GEO: R18631
- TRACT 255: PANORAMA LEISURE PHASE: 1-C BLK: 215 LOT: 41-I GEO: R18632
- TRACT 256: PANORAMA LEISURE PHASE: 1-C BLK: 215 LOT: 43-I GEO: R18634
- TRACT 257: PANORAMA LEISURE PHASE: 1-C BLK: 215 LOT: 48-I GEO: R18639
- TRACT 258: PANORAMA LEISURE PHASE: 1-C BLK: 215 LOT: 49-I GEO: R18640
- TRACT 259: PANORAMA LEISURE PHASE: 1-C BLK: 215 LOT: 50-I GEO: R18641
- TRACT 260: PANORAMA LEISURE PHASE: 1-C BLK: 215 LOT: 53-I GEO: R18644
- TRACT 261: PANORAMA LEISURE PHASE: 1-B BLK: 215 LOT: 57-I GEO: R18648
- TRACT 262: PANORAMA LEISURE PHASE: 1-B BLK: 215 LOT: 60-I GEO: R18651
- TRACT 263: PANORAMA LEISURE PHASE: 1-B BLK: 215 LOT: 61-I GEO: R18652
- TRACT 264: PANORAMA LEISURE PHASE: 1-C BLK: 215 LOT: 65-I GEO: R18656
- TRACT 267: PANORAMA LEISURE PHASE: 1-C BLK: 215 LOT: 71-I GEO: R18662
- TRACT 268: PANORAMA LEISURE PHASE: 1-C BLK: 215 LOT: 74-I GEO: R18665
- TRACT 269: PANORAMA LEISURE PHASE: 1-C BLK: 215 LOT: 75-I GEO: R18666
- TRACT 270: PANORAMA LEISURE PHASE: 1-C BLK: 215 LOT: 79-I GEO: R18670
- TRACT 271: PANORAMA LEISURE PHASE: 1-C BLK: 215 LOT: 81-I GEO: R18672
- TRACT 272: PANORAMA LEISURE PHASE: 1-C BLK: 215 LOT: 84-I GEO: R18675
- TRACT 273: PANORAMA LEISURE PHASE: 1-C BLK: 215 LOT: 99-I GEO: R18685
- TRACT 274: PANORAMA LEISURE PHASE: 1-C BLK: 215 LOT: 101-I GEO: R18687
- TRACT 276: PANORAMA LEISURE PHASE: 1-C BLK: 215 LOT: 56-I GEO: R18647
- TRACT 277: PANORAMA LEISURE PHASE: 1-C BLK: 215 LOT: 46-I GEO: R18637
- TRACT 278: PANORAMA LEISURE PHASE: 1-C BLK: 215 LOT: 114-H GEO: R18577
- TRACT 279: PANORAMA LEISURE PHASE: 1-C BLK: 215 LOT: 39-H GEO: R18507
- TRACT 280: PANORAMA LEISURE PHASE: 1-C BLK: 215 LOT: 41-H GEO: R18509
- TRACT 281: PANORAMA LEISURE PHASE: 1-C BLK: 215 LOT: 43-H GEO: R18511
- TRACT 282: PANORAMA LEISURE PHASE: 1-C BLK: 215 LOT: 110-I GEO: R18696
- TRACT 283: PANORAMA LEISURE PHASE: 1-C BLK: 215 LOT: 75-H GEO: R18543
- TRACT 284: PANORAMA LEISURE PHASE: 1-C BLK: 215 LOT: 77-H GEO: R18545
- TRACT 285: PANORAMA LEISURE PHASE: 1-C BLK: 215 LOT: 79-H GEO: R18547
- TRACT 286: PANORAMA LEISURE PHASE: 1-C BLK: 215 LOT: 81-H GEO: R18549
- TRACT 287: PANORAMA LEISURE PHASE: 1-C BLK: 215 LOT: 84-H GEO: R18522
- TRACT 288: PANORAMA LEISURE PHASE: 1-C BLK: 215 LOT: 85-H GEO: R18553
- TRACT 289: PANORAMA LEISURE PHASE: 1-C BLK: 215 LOT: 88-H GEO: R18555
- TRACT 290: PANORAMA LEISURE PHASE: 1-C BLK: 215 LOT: 94-H GEO: R18557
- TRACT 291: PANORAMA LEISURE PHASE: 1-C BLK: 215 LOT: 28-J GEO: R18742
- TRACT 292: PANORAMA LEISURE PHASE: 1-C BLK: 215 LOT: 33-J GEO: R18747
- TRACT 293: PANORAMA LEISURE PHASE: 1-C BLK: 215 LOT: 34-J GEO: R18748
- TRACT 294: PANORAMA LEISURE PHASE: 1-C BLK: 215 LOT: 36-J GEO: R18750
- TRACT 295: PANORAMA LEISURE PHASE: 1-C BLK: 215 LOT: 37-J GEO: R18751
- TRACT 296: PANORAMA LEISURE PHASE: 1-C BLK: 215 LOT: 78-G GEO: R18423
- TRACT 297: PANORAMA LEISURE PHASE: 1-C BLK: 215 LOT: 73-G GEO: R18418
- TRACT 298: PANORAMA LEISURE PHASE: 1-C BLK: 215 LOT: 70-G GEO: R18415
- TRACT 299: PANORAMA LEISURE PHASE: 1-C BLK: 215 LOT: 68-G GEO: R18413
- TRACT 300: PANORAMA LEISURE PHASE: 1-C BLK: 215 LOT: 67-G GEO: R18412
- TRACT 301: PANORAMA LEISURE PHASE: 1-C BLK: 215 LOT: 65-G GEO: R18410
- TRACT 302: PANORAMA LEISURE PHASE: 1-C BLK: 215 LOT: 69-G GEO: R18414
- TRACT 303: PANORAMA LEISURE PHASE: 1-C BLK: 215 LOT: 64-G GEO: R18409
- TRACT 304: PANORAMA LEISURE PHASE: 1-C BLK: 215 LOT: 63-G GEO: R18408
- TRACT 305: PANORAMA LEISURE PHASE: 1-C BLK: 215 LOT: 62-G GEO: R18407
- TRACT 306: PANORAMA LEISURE PHASE: 1-C BLK: 215 LOT: 61-G GEO: R18406
- TRACT 308: PANORAMA LEISURE PHASE: 1-C BLK: 215 LOT: 50-H GEO: R18518
- TRACT 309: PANORAMA LEISURE PHASE: 1-C BLK: 215 LOT: 51-H GEO: R18519



# WEST TEXAS ROUNDUP

## ABSTRACT AND TITLE




**ELLYSON ABSTRACT**  
BREWSTER  
PRESIDIO  
JEFF DAVIS  
410 N. 5th

410 N. Fifth Street  
P.O. Box 418  
Alpine, Texas 79830  
Office 432-837-5801  
Fax 432-837-3509

Kristin@ellysonabstract.com • www.ellysonabstract.com

## BODY SHOP




**BEST BODY SHOP**  
Alpine, Texas

506 W. Holland Ave. • Alpine • 432-837-7275  
Towing Available • Estimates  
Insurance Work Accepted  
CALL FOR AN APPOINTMENT

Family Owned & Operated  
**DWAYNE AND  
DYLAN MURRELL**

Served Alpine Since 1995 • Over 30 Years Experience

## DENTAL



**MONAHANS DENTAL** Kermit Smiles  
...a reason to smile

**Dr. Anusha Kotha, DDS**  
General Dentist

310 S. Allen Ave.  
Monahans, TX 79756  
Tel: 432-943-5555

402 E. Austin St  
Kermit, TX 79745  
Tel: 432-586-2911

## AUTO



**ASIS  
TIRE Co.**

Most Major Brands of Tires  
Complete Muffler & Tailpipe Repair • Brakes • Shocks  
Struts • Front End Alignments  
24 Hr. Emergency Service

2601 E. Hwy 90, Alpine • 432-837-5030



Since 1959  
**REMIE'S BODY SHOP, INC.**  
Complete Auto Repair & Glass  
Insurance Claims  
Grille Guards, Hail Repair • Paintless or Conventional

CALL FOR ESTIMATES • PICK-UP & DELIVERY AVAILABLE  
800 EAST 6TH • FORT STOCKTON 79735 • 432-336-5181 • 432-336-6931 FAX  
RAMIRO RAMOS & RAMSEY RAMOS

## AUTO



XPEL Paint Protection Film  
Window Tinting • Auto Storage  
Auto Detailing • Ceramic Coating

Call for Appointment  
**432-837-9789**  
511 W. Holland • Alpine

**THE STABLE**  
PERFORMANCE CARS

## CLOCK REPAIR



**DML Clocks**  
2003 Fort Davis Hwy.  
Alpine, Tx 79830 • 432-837-5330 • 386-6777

- Expert Clock Repair, All Types
- Pocket Watch Repair & Cleaning
- Watch Batteries Installed
- Free Pick Up & Delivery In our Area
- Estimate Before Repairs, Insured

Call Today and Get Your Timepiece Repaired

## FURNITURE



**MITCHELLS**  
Furniture & Flooring

Family owned for 30 years.

509 W. Holland Ave. Alpine Tx.  
mitchellsfurniture@gmail.com  
432-837-0070

## BAIL BONDS



**Freedom  
Bail Bonds**

**432-837-3293**

24 Hour Service • Major Credit Cards Accepted

**NOTICED US?  
SO WILL YOUR NEW CLIENTS!**

**RESERVE YOUR SPACE TODAY!**

Call JT At the Avalance  
**432-837-3334**

**the ALPINE AVALANCHE**  
Serving the Big Bend and Davis Mountains Country since 2012

## BANKING


Lobby & Drive-Up  
Services Available!

Proudly Serving Our Community

**ALPINE BRANCH**  
101 East Avenue E | Alpine, TX 79830  
432.837.3375

**WTNB**  
MEMBER FDIC EQUAL HOUSING LENDER NMLS 410435 | 877.493.7862 | WTNB.com

## DRUG STORE



**CITY DRUG STORE**  
Caring for and about you since 1936

**Sherri Molina, PharmD**  
Pharmacist in Charge

202 E. Ave. E • Alpine, TX 79830  
**432-837-2252**  
Hablamos Espanol

LOCAL DELIVERY  
MAIL SERVICE  
Mon. - Fri.  
9-1 | 2-6

## HOME HEALTH



Your only locally owned and operated  
Home Health Care Agency since 2011

Serving the communities of  
**Alpine, Fort Davis, Marathon, Marfa,  
Presidio, Redford & Shafter.**

432-837-5907  
www.agavehomehealth.com

Our skilled services are customized to each individual's health care needs.  
We offer the following services in the privacy of your own home.

Skilled Nursing Physical Therapy Occupational Therapy Speech Therapy



**TRANSPECOS BANKS**  
Texas Banking at its Best  
**(432) 837-0094**

102 W. Avenue E • Alpine, TX 79830  
109 W. Hwy. 90 • Marathon, TX • (432) 386-4500  
115 W. 3rd • Pecos, TX 79772 • (432) 445-9000

Member FDIC



**HIGHLAND DRUG**

**Jill Jahn PharmD**  
Owner/Pharmacist in charge

Monday-Friday  
8 am-6 pm  
Saturday 9 am-Noon

504 East Avenue E | Alpine, TX 79830  
**(432)837-3931**

## HOTELS




2271 West Interstate 10  
Fort Stockton, TX 79735  
(432) 336-9600  
www.fortstockton.hamptoninn.com



2115 Interstate 10 W.  
Fort Stockton, TX 79734  
432-336-7000  
800-780-7234  
www.bestwestern.com

## BOOKS



**RE-READS  
USED BOOKSTORE**

INSIDE THE ALPINE PUBLIC LIBRARY AT  
805 W. AVENUE E.

Shop ReReads online at  
AlpinePublicLibrary.org


**NOTICED US?  
SO WILL YOUR NEW CLIENTS!**

**RESERVE YOUR SPACE TODAY!**

Call JT At the Avalance  
**432-837-3334**

**the ALPINE AVALANCHE**  
Serving the Big Bend and Davis Mountains Country since 2012

## LIQUOR



Great selection  
of liquor including  
bourbon, gin,  
and agave spirits

OPEN  
Wednesday-Saturday  
next to Brick Vault BBQ

VETERAN OWNED AND OPERATED

**TO ADVERTISE YOUR BUSINESS CALL 432-837-3334  
OR EMAIL PUBLISHER@ALPINEAVALANCHE.COM**



# Research featured on cover of "Science" magazine

A new study released in the Sept. 9 issue of the journal "Science" reveals that donkeys spread like a wildfire out of Africa around 4,500 years ago, reaching Europe and Asia within only a few centuries.

This demonstrates the key role that donkeys played in past human societies, especially as beasts of burden, mobilizing people, culture, and goods across arid deserts and steep mountains.

Surprisingly, where and when donkeys were first domesticated has remained a scientific mystery. Archaeological findings, as well as texts and iconographic evidence, have suggested the broad region of north-eastern Africa as a possible source. But they also pointed to regions outside Africa, possibly the Arabian peninsula, or even further away in Mesopotamia. Previous work aimed at tracking the evolutionary history of donkeys using

their genetics failed to find significant support for any candidate region.

However, mapping the genetic diversity of donkeys today may not have been sufficient as modern breeding, and trade may have exchanged animals over very distant regions. Therefore, the researchers also ought to characterize the genomes of donkeys that lived in the past, leveraging technologies in ancient DNA research.

Dr. Laura Patterson Rosa, assistant professor of Animal and Equine Sciences at Sul Ross State University, was part of the team that analyzed the genome of the donkeys as part of a study.

Rosa's efforts included sampling a unique South American donkey breed that has been selected for its smooth locomotion and endurance since colonization of the Americas.

The team also found that the timing of the separa-



tion among the different populations followed a clear trend, starting first in Africa and spreading into Eurasia and Asia.

Ancient genomes provide securely located time points, which helped the researchers track the expansion of donkeys across the world.

Clearly, the study reveals an important difference between the donkey and their close relative, the horse. In contrast to horses, inbreeding in donkeys did not particularly increase in modern times, which suggests similar reproductive strategies now and in the past.

## SENIOR SPOTLIGHT Kiara Castillo

**In what activities did you participate in high school?**

I have been involved in basketball and track throughout high school. I am also on the varsity volleyball and softball teams. I am also involved in FFA, and a current member of the student advisory committee.

**Who was your favorite teacher/coach, and why?**

Throughout my four years of high school I have had great teachers and coaches which makes it hard for me to choose only one. But I do want to give a special shoutout to Coach Virdell for always bringing positivity and strength into the girls athletic program.

**What was your favorite moment the last four years?**

My favorite moment from high school is our volleyball playoff game my junior year against Littlefield. It was a hard fight and a tough loss,



Kiara Castillo

but also a great learning experience for me and the team. The atmosphere was just on point, and I'll just never forget the feeling of stepping onto the court with that special group of girls.

**What are your plans after high school?**

My plans after high school are to attend Sul Ross State University to major in business management and cosmetology. While doing so, I hope to continue my athletic career in volleyball at the collegiate level.

The Senior Spotlight is graciously sponsored by

Services Provided:  
• Wire Transfers • Money Orders • Phone Cards • ATM

Member Store at Participating Stores

We are very proud to support today's Youth!

2004 East Highway 90 | Alpine, Tx.  
432-837-9597  
www.holidayinnexpress.com

Live streaming  
Sunday 10 a.m. • Wednesday 6:30 p.m.

801 East Brown graceinalpine@gmail.com  
Pastors Mark & Shirley Williams • 432-837-9117

Facebook.com/gcalfpine

ALPINE SMALL ANIMAL AND LARGE ANIMAL SERVICES  
Mary Dodson, D.V.M. | Zach Dodson, D.V.M.  
3201 N. Hwy. 118, Box 7 • Alpine TX 79830  
432-837-5416

Sunday Evenings  
6:00-7:00 PM

Moss Creek Chapel  
46043 State Hwy 118  
Alpine, Texas

Phone:  
432-244-8859

1200 Hwy 118 South • Alpine, TX 79830  
432-837-0890 • Fax 432-837-0826

M-F 8am-5pm Closed for Lunch  
Closing at noon on Fridays

Full Service Automotive Repair  
Exhaust Installation  
Lube & Oil Changes • Welding Repair

1901 W. Highway 90  
Alpine, Texas 79830  
432-837-5918

Outpatient Physical Therapy  
Sports Medicine & Athletic Training Services

**ADVERTISE HERE!**

Call  
432-837-3334

Your Full Service Propane, Gasoline & Diesel  
Distributor for Brewster, Jeff Davis & Presidio Counties of West Texas

ALPINE OFFICE: 3001 N. Hwy 118  
Alpine Texas • 432-837-2518

MARATHON OFFICE: 300A S. US HWY 385  
Marathon, TX • 432-386-4422

YOUR "PEOPLE TO PEOPLE" BANK  
SINCE 1911

FORT DAVIS (432) 426-3211 • ALPINE (432) 837-1888  
PRESIDIO (432) 229-5000

Bible Study  
9:45am

Worship  
10:55am & 6pm

office@fbcalpine.com  
203 N. 4th St. • Alpine TX 79830 • (432) 837-2487

## Devotional Page Rain

BY JENNY WALKER

First Baptist Church Alpine

Rain is such a gift in the desert. The dry, cracked dirt cries out for relief. So the heart cries out for goodness and healing in seasons of drought. When difficulty comes, a person's thoughts can either help or hurt them. Free will grants us that choice.

Decisive joy allows blessings to flow in seasons of drought. Proverbs 15:4 advises, "The soothing tongue is a tree of life, but a perverse tongue crushes the spirit," and chapter 17:22 reads, "A cheerful heart is good medicine, but a crushed spirit dries up the bones."

A California woman was struggling with her sister-in-law's death. Stopping for tea, she saw the barista was also having a bad day. The woman spoke kindly to the barista, who in turn wrote on her cup, "Your soul is golden." It's true that the burden of pain is an easier load when we dilute it with compassion.

God's love eases our thirsty souls and fills empty hearts that echo with loneliness. Luke wrote in Acts 14:17, "Nevertheless he left not himself without witness, in that he did good, and gave us rain from heaven, and fruitful seasons, filling our hearts with food and gladness."

A garden, bursting with life is thrilling to watch, much like love. Luke 10:33 tells, "But a Samaritan, as he traveled, came where the man was; and when he saw him, he took pity on him." This garden was well watered, and so must our hearts be.

"Good Samaritans have emerged across soci-

ety showing care and respect for all, regardless of gender, race, or background, reminding us that each one of us is special and equal in the eyes of God," (Queen Elizabeth II, addressing the pandemic).

Our virtues are similar to rain, nurturing plants. Deuteronomy 32:2 pleads, "Let my teaching fall like rain and my words descend like dew, like showers on new grass, like abundant rain on tender plants." Remember, only what fills your thoughts can then come out.

"Finally, brothers and sisters, whatever is true, whatever is noble, whatever is right, whatever is pure, whatever is lovely, whatever is admirable - if anything is excellent or praiseworthy - think about such things," urges the Apostle Paul in Philippians 4:8.

Proverbs 23:7a states clearly, "For as he thinks in his heart, so is he."

Mahatma Gandhi taught, "A man is but the product of his thoughts. What he thinks, he becomes." These truths have rippled through time.

Nelson Mandela inspired us, "It is what difference we have made to the lives of others that will determine the significance of the life we lead. Sometimes it falls on a generation to be great. You can be that great generation. Let your greatness blossom."

Reaching out to others, watering thirsty souls, does not have to come from our strength alone. Psalms 28:7 says, "The Lord is my strength and my shield; my heart trusted in him, and I am helped; therefore, my heart greatly rejoiceth; and with my song will I praise him."

This Devotional and Directory are sponsored by these businesses who encourage us to attend worship services.

ANGLICAN  
ANGLICAN CHURCH IN N. AMERICA  
HOLY CROSS ANGLICAN  
903 Fighting Buck Ave., 837-7170  
www.holycrossalpine.org  
Rev. Wyatt Boutwell

APOSTOLIC  
CALVARY APOSTOLIC  
South Hwy. 118, 837-1720  
Javier Trevino, Minister

ASSEMBLY OF GOD  
1802 Fort Davis Hwy., 837-2264  
Pastor Clark Nussbaum

FIRST HISPANIC ASSEMBLY OF GOD  
South 11th & Avenue I  
Pastor Saul Ordenez

BAHA'I  
BAHA'I FAITH  
1202 N. 5th St., 432-538-7002

FIRST BAPTIST  
4th & Sul Ross, 837-2487

HILLSIDE BAPTIST  
East Hwy. 90, 837-5205  
Pastor Brad McGuire

BIG BEND CHURCH  
Hwy 118 @ Bee Mountain, Terlingua  
55 @ 10:00  
Worship @ 11:00  
(432) 371-2243

CATHOLIC  
OUR LADY OF PEACE  
5th Street & Gallego Ave., 837-3304  
Fr. Pablo Matta, Fr. Victorino Loresca,  
Fr. Alfonso Coronado Sanchez

ST. MARY'S CATHOLIC CHURCH  
211 W. San Antonio, Marfa  
(432) 729-4694  
Fr. Pablo Matta, Fr. Victorino Loresca,  
Deacon Alfonso Coronado

CHURCH OF CHRIST  
CHURCH OF CHRIST  
2nd & Sul Ross Ave., 830-515-0591  
10:45 a.m. Sundays  
Wednesday Evening Service 5:15 p.m.  
Curtis Wubbena, Minister  
AlpinechurchTX.org

MARFA CHURCH OF CHRIST  
North Austin Street  
Marfa, TX 79843  
Sunday 10:30 a.m.  
MarfaChurchofChrist@gmail.com

DISCIPLES OF CHRIST  
FIRST CHRISTIAN DISCIPLES OF CHRIST  
6th & Sul Ross Ave., 837-2275  
Pastor Lana Covington

EPISCOPAL  
ST. JAMES' EPISCOPAL, ALPINE  
Ave A & N. 6th St., (432) 837-4133  
Santa Inez, Terlingua; Chapel of St. Mary  
& St. Joseph, Lajitas  
www.bigbendepiscopalmission.org

JEHOVAH'S WITNESS  
JEHOVAH'S WITNESS KINGDOM HALL  
1508 N. 5th St., 837-5115

LUTHERAN  
REDEEMER LUTHERAN  
15th & Holland, 837-5428  
Pastor Mike Fickenschler

METHODIST  
FIRST UNITED METHODIST  
208 E. Sul Ross Ave., 837-2286, 2280  
Pastor Stephen White

MORMON  
CHURCH OF JESUS CHRIST  
OF LATTER-DAY SAINTS  
Sunny Glen Road, 837-3779

ORTHODOX CHRISTIAN  
ST. JONAH ORTHODOX CHURCH  
405 E. Gallego  
Services: 6pm Saturday  
10am Sunday  
bbsgary@yahoo.com

PRESBYTERIAN  
FIRST PRESBYTERIAN  
5th Street & Lockhart Ave., 837-2449  
Pastor Rev. Bill Cotman

UNITARIAN UNIVERSALIST  
UNITARIAN UNIVERSALIST OF THE BIG BEND  
1308 N. 5th St  
http://bigbenduu.org

OTHER  
BIG BEND COWBOY CHURCH  
E. U.S. Highway 90, 254-631-8582, 432-364-2822  
Wendel Elliott, Pastor  
bigbendcowboychurch.com

GRACE CHRISTIAN FELLOWSHIP  
801 E. Brown, 386-6203  
Mark & Shirley Williams, ministers  
www.facebook.com/gcalfpine/

ST. LUKE'S EPISCOPAL  
Welcomes you.  
Holy Communion 11 am Sunday  
1102 North 5th Street, Alpine, 837-1653  
Father Henry - Pastor

ZEN MEDITATION  
Morning Glory Sangha  
Rev. Jean O'Cullinn, Minister, 364-2462  
Laura Belkin, 729-3063  
6 p.m. Monday Nights

Unitarian Universalist Church 1308 N.5th St.

2607 West US Hwy. 90 • Alpine, Texas  
432-837-7344

BEHIND EVERY PROJECT IS A  
True Value  
MORRISON HARDWARE  
SERVING ALPINE & THE BIG BEND SINCE 1928

301 N. 5th St  
432-837-2061

ALPINE, TEXAS 79830  
www.morrisonhardware.com

Melissa Gonzales  
Restaurant General Manager

2301 E. Hwy. 90  
Alpine, TX 79830  
432-837-5819

7 DAYS A WEEK STARTING AT 11AM

Services Provided:  
• Wire Transfers • Money Orders  
• Phone Cards • ATM

Member Store at Participating Stores

SKINNER'S LLC  
DRILLING & WELL SERVICE  
Water Well Drilling & Complete Well Service

432-837-2497

Serving you since 1978!

Walter Skinner Master License 2838 AI

Sonic Fountain Drinks  
32oz. Drinks 99c  
7-10am Mon.-Sun.

1/2 Price Happy Hour!  
2-4 pm Every

602 Holland Ave. E  
Alpine, Texas 79830  
432-837-5521

KC's QuickMart & RV Park  
• 30/50 Amp Full Thrus  
• Tent Sites  
• Restrooms, Laundry  
• Walking Distance to:  
• Pizza Hut  
• Penny's Diner  
• All Aboard America Bus Stop

2303 E. Hwy 90 - Alpine  
432-837-5497

I can do all things  
through Christ  
which strengthen me.  
~ Philippians 4:13

208 East Sul Ross Avenue  
Alpine, TX 79830-4722  
(432) 837-2286

Holy Communion Sunday 10:30am  
Wed. Evening 6:00pm  
Wed. Evening Bible Study 6:30pm

Pastor Wyatt Boutwell

Send updates to:  
editor@alpineavalanche.com



# COME BY TODAY FOR THE SPICY OR CRISPY CHICKEN SANDWICH COMBO





**i'm lovin' it**  
900 E. Avenue E  
Alpine Texas

## Pros and cons of meal subscription plans

From time to time, I feel it is a clever idea to subscribe to one of the several meal subscriptions plans available because I just want something different to eat. Another, and perhaps the biggest reason is because I can have the ingredients sent to my house, and I don't have to grocery shop. This is good and bad, the positive aspect being that I can select a plan that is healthy and with proper portioning without buying extra ingredients. For example,



**HEAD OVER MEALS**  
by kara gerbert

you can't just buy one carrot. The negative aspect can be the cost.

These plans reel you in with up front discounts in

hopes you will continue to purchase their services. The first-time buyer gets a discount on their purchase, then it goes to regular pricing after the initial buy. This can be costly when you break down the number of meals and the ingredients for just those meals, yet the company behind the product must pay for their overhead and shipping costs.

It is no different than the grocery store except in the amount of the ingredients involved. It is simple supply and demand, and with



inflation today everything is more costly. Yet in this case you pay more for convenience, and get less meals out of the purchase.

The pro aspect is these meals are geared toward healthy eating. In the case of the recipe below, this

according to eating habits and or diet are a plus. The vegetables are fresh and bright, most if not all the ingredients are provided, and the recipe cards and instructions for preparing the meal are also included.

So really it all depends on what you can afford, and how you want to eat. The one good thing to come from these plans besides the food is that you can always cancel, yet you have gained new recipes and ideas on how you can eat cleaner and better for your lifestyle.

### Pork Chops with Tomato Caper Sauce

**INGREDIENTS:**

- 1 whole carrot
- 6 oz. green beans
- ½ oz. roasted almonds
- 1 whole shallot
- ½ oz. capers
- 2 (5 oz.) boneless pork chops
- ¼ tsp. fennel-orange spice blend
- 1 oz. roasted red peppers
- ¼ oz. white balsamic vinegar
- 3 ½ oz. diced tomatoes

**DIRECTIONS**

Prep the following ingredients. Trim and peel carrot. Slice across at an angle into pieces, about ¼-inch thick. Trim stem ends off green beans. Halve lengthwise. Roughly chop roasted almonds. Cut ends off shallot, and discard peel. Halve lengthwise. Lay flat and cut lengthwise into strips, about ¼ inch thick. Roughly chop capers.

Pat the boneless pork chops dry with paper towels. Season with the fennel-orange spice provided, salt and pepper. In a large sauté pan, heat 1-½ table-

spoons of cooking oil over medium high heat. Add pork chops to hot pan and sear three to four minutes on each side, or until fully cooked. Transfer pork chops to a cutting board, and let rest for three minutes.

Remove pan from heat and reserve.

In a medium sauté pan, heat 1-½ tablespoons cooking oil over medium heat. Add carrot to hot pan. Season with salt and pepper. Cook two to three minutes, or until lightly browned, stirring occasionally. Add green beans. Cook about two minutes, or until green beans are slightly browned, stirring occasionally. Add in about 1/3 cup of water. Cook three to four minutes, or until liquid has cooked off, stirring occasionally. Add roasted red peppers, almonds, and one tablespoon butter. Season with salt and pepper to taste. Cook two to three minutes, or until green beans and carrot are tender, stirring occasionally. Remove from heat.

Using the pan used for pork, return to stovetop and heat over medium heat. Add shallot and capers to hot pan. Cook three to four minutes, or until shallot is translucent, stirring occasionally. Add white

balsamic vinegar. Stir to combine. Add diced tomatoes, about ¼ cup water, and two tablespoons butter. Season with salt and pepper. Stir until butter has melted. Simmer two to three minutes, or until tomatoes begin to soften, stirring occasionally.

Cut pork chops into five to seven slices each. Divided green beans and carrot between plates. Shingle pork chops on the side. Spoon tomato caper sauce over top and enjoy.

## Youth soccer clinics coming up at Lobo Field



Area youth participate in the Sul Ross soccer clinics at Lobo Field

Courtesy photo

The Sul Ross State University men's soccer program and the Big Bend Youth Soccer Association will provide a quality soccer experience for everyone in the community. Sul Ross is hosting free

skills clinics on Sundays at Lobo Field for the local soccer community and players ages 5-18.

The clinics are led by head men's soccer Coach Jon Evan and graduate assistant Lorenzo Segura.

All are invited to watch Sul Ross men's soccer training sessions. Coaches are invited to observe a model youth coaching session. On select Sundays, all BBYSA players are invited to participate in youth skills clinics.

Sunday skills clinics will be held Sept. 25, Oct. 2, Oct. 9, Oct. 16, Oct. 23, Oct. 30, and Nov. 6.

For more information on the clinics, contact Coach Jonathan Evan at [jonathan.evan@sulross.edu](mailto:jonathan.evan@sulross.edu).

## Trapping shows off artwork



Visitors to the 36th annual Trappings of Texas enjoyed a variety of first-class artwork at the Sept. 16 reception at Museum of the Big Bend in Alpine.

Avalanche photo by Gail Diane Yovanovich

**NOW HIRING  
BANK TELLERS  
PART AND FULL-TIME**

### Alpine Branch

**Please send resume and cover letter to:**  
[AGallego@WTNB.com](mailto:AGallego@WTNB.com)

**APPLY in person at WTNB**  
101 East Avenue E | Alpine, TX 79830

---

**Competitive Compensation Package**

WTNB is a community bank with a pleasant, growth atmosphere and includes excellent benefits. Benefits include health and vision insurance and a matching 401k plan.

WTNB also offers a very generous Paid Time Off (PTO) Plan which begins accruing upon an employee's initial hire date, along with Federal Bank Holidays.



**WTNB**  
West Texas National Bank™

MEMBER FDIC EQUAL HOUSING LENDER 877.493.7862 | [WTNB.com](http://WTNB.com)

WTNB is an Equal Employment Opportunity Employer

## OLE CRYSTAL BAR

18YR AND UP WELCOMED




**COME IN DEN AND CHECK OUT OUR DAILY DRINK SPECIALS AND GIVEAWAYS!**

**LIVE MUSIC THIS WEEKEND!**



## We have Alpine Covered



We offer more Fiber Optic connectivity than any other provider. Period

Faster internet, more devices, no lag time, no buffering. You may have fiber access at you location and not know it.

Simple, easy, no waiting on technicians all day.

THAT'S OUR PROMISE.

800.592.4781

[www.bigbend.com](http://www.bigbend.com)

