

County hikes taxes

BY ROXANNE HILL
Staff Writer

The proposed tax rate and employee pay raises generated much debate at the Brewster County Commissioners Court regular meeting on Aug. 11.

Tax Assessor-Collector Sylvia Vega discussed the proposed tax rate calculations for 2021, and presented the 2021 certified values and tax roll. Vega said the no new revenue tax rate was 0.3692 per \$100 assessed value. Auditor Patty Roach said the voter approval rate was 0.421531 per \$100.

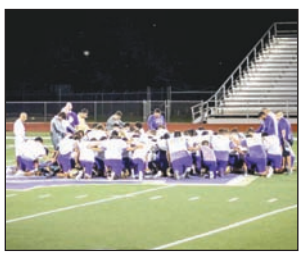
Treasurer Julie Morton said if the voter approval rate was adopted, then the county would have a deficit of \$344,272, and if the no new revenue tax rate, or tax rate as is, was chosen, the deficit would be \$771,979.

Judge Eleazar Cano noted the voter approval rate was the highest the county could approve without having to hold an election.

“When your tax values go up, your tax rate goes down, and that’s your no new revenue rate,” explained Roach. “You are allowed to increase 3.5% on

See TAXES • 6

INSIDE



FEATURED

See sports on page 8.

Rainfall totals at Alpine-Casparis Airport

2021 16.12"
August 5.26"



Burn Ban ON

INDEX 16 pages

Opinions P.4
Sports P.8
Puzzle P.7
Classifieds P.14-16

PLEASE REMEMBER TO THANK A VETERAN, A MEMBER OF THE ARMED FORCES, OR A LAW ENFORCEMENT OFFICER EVERY DAY.



Bucks ready to play

BY GLENN MCCARTHY
Sports Correspondent

A rite of passage for all hardcore Texas high school football fans kicked off this past weekend around the state. Like a kid unwrapping Christmas presents, each week brings a new gift - two-a-days started Aug. 2, midnight practice a fortnight ago, then the first varsity scrimmages were played this weekend, allowing football starved fans to get an introductory look at their hometown boys.

The whole ball and confetti will drop Aug. 27 at

home versus El Paso Jefferson to officially kick off the season.

The 2021 Alpine Fightin’ Bucks football team was unveiled last Friday night against the Coahoma Bulldogs in a 68-play controlled scrimmage. Coach John Fellows and his boys had to flip flop the schedule and move the Pecos scrimmage back one week because of condemned bleachers, and travel to McCamey stadium to face Coahoma at a neutral site. Both the varsity and JV played on

See BUCKS • 6



The Fightin’ Bucks listen up at Midnight Madness at Buck Stadium.

Photo by AMC Photography

Breaking ground for a museum expansion



A groundbreaking ceremony was held on Aug. 12 at Sul Ross State University in Alpine for the future expansion of the Emmett and Miriam McCoy Building at Museum of the Big Bend. Present at the ceremony and holding the traditional groundbreaking shovels were TSUS Student Regent Camile Settegast, Dean of Educational and Cultural Resources April Aultman Becker, TSUS Regents Alan Tinsley, Regent Don Flores, and Nicki Harle, TSUS Second Vice Chairman Garry Crain, TSUS Chancellor Brian McCall, TSUS Chairman Charlie Amato, TSUS First Vice Chairman Duke Austin, Brian McCoy, Brenda McCoy Remme, Reid McCoy, and Sul Ross President Pete Gallego.

Avalanche photo by Roxanne Hill

Music fills the sails of research engineer

BY SHAWNA GRAVES
Contributing Writer

As a research engineer at McDonald Observatory in Fort Davis, John Kuehne specializes in bringing automation to the movement of the telescopes.

He is likely to be found rewriting automation software he previously created into the more “robust programming language” called Ada.

But, he said, “You can’t write software for eight hours straight.”

So, he finds creative ways to relax his mind, like listening to music, creating musical arrangements, crocheting socks, and practicing new languages.

When Kuehne first arrived at the Observatory in 2007, none of the telescopes was



Research Engineer John Kuehne plays a sea shanty on viola on the deck of one of McDonald Observatory’s telescopes.

Courtesy photo

automated, thus, none could be remotely operated. They are now fully automated, thanks to Kuehne’s work. It’s especially useful since no research observers have been allowed to work onsite since the start of the pandemic in March 2020.

Kuehne never imagined he would use the

same research involved in the work of his PhD, earned in Geophysics from the University of Texas in Austin. That work revolved around the variable rotations of Earth. After earning his doctoral degree, he went on to work at Colby College in Maine for 11 years.

The opportunity to

move to McDonald Observatory caused his earlier work to resurface. It turns out, the same math and physics principles from his PhD research were useful in tracking distant objects using telescopes located on a spinning Earth.

Kuehne goes in depth into the science behind this in a presentation on the McDonald Observatory’s YouTube channel entitled, “Reflections on the 82-inch Telescope.” The video was published earlier this year in celebration of the observatory’s 82nd anniversary of the 82-inch Otto Struve Telescope, the first major telescope built at the observatory, and Kuehne’s home away from home.

Once a month, Kuehne has the grueling task of observatory night watch. For anywhere from three to seven nights, he must

babysit the telescopes as observers dial in remotely in pursuit of data for their research.

“Observers are hot to get data and want to observe, even in risky conditions,” Kuehne said. Risky conditions for telescopes are mostly weather related, as even the slightest moisture can damage the delicate machinery. By the time the weather radar indicates rain, the telescope mirrors may already be wet. Someone must be onsite to monitor conditions and take necessary precautions to protect the equipment.

The overnight shifts can be difficult, but Kuehne has ways of coping. Developing his own arrangements of classical music is a favorite pastime.

See MUSIC • 6

Alpine Memorial FUNERAL HOME
CREMATIONS • PRENEED PLANS
Honor The Memories
EACH SERVICE, UNIQUE AND PERFECT IN EVERY WAY.
209 West Sul Ross, Alpine Texas | 432-837-2222
www.AlpineMemorialFuneralHome.com

MONICA WOODALL
900 E. HOLLAND AVE. • (NEXT TO BEALLS)
ALPINE, TX 79830
432-837-5631
LIKE A GOOD NEIGHBOR STATE FARM IS THERE.
STATE FARM INSURANCE

Lucy's Christmas Cottage
106 W. Lockhart Behind
True Value
A year round Christmas store
featuring unique decorations and home accents

Double K FLOWERS & GIFTS
DEBORAH PRUITT
OWNER
o: (432) 837-2227 409 E. Ave. E • Alpine, TX
c: (432) 940-9150 deborahpruitt50@yahoo.com

BIG BEND CONCRETE CO.
ALPINE, TX 79831 • 432-837-7179
BIGBENDCONCRETE@GMAIL.COM
SERVING THE TRANSPecos, DAVIS MOUNTAIN, PERMIAN AREA

Lobby & Drive-Up Services Available!
Proudly Serving Our Community
ALPINE BRANCH | 101 East Avenue E | Alpine, TX 79830 | 432.837.3375
WTNB
MEMBER FDIC EQUAL HOUSING LENDER
NMLS 410435 | 877.493.7862 | WTNB.com

OBITUARIES



Mary Eva "Joyce" Wright
 Mary Eva "Joyce" Wright passed away on July 14, 2021, following a lengthy illness. Born Dec. 4, 1936, she was preceded in death by her husband of 57 years, Irby Hearn Wright. Joyce and Irby retired to

Alpine, Texas, where they enjoyed expansive views of the Far West Texas mountains they loved. She was an avid reader, a frequent writer of letters-to-the-editor on a variety of subjects, an animal lover, and a fan of projects like Marfa Public Radio.

When she wasn't writing or designing and building her dream home, she was sewing, canning, making candles and soap, or tending to her flowers. Joyce is survived by son, Luke Troxel Wright; daughters Ann Kennedy, Audrey Spolarich, Ange-

la Wright, Allison White, and April Beck; 10 grandchildren; four nieces and a nephew; and many other relatives and dear friends. She was also preceded in death by her parents, Thomas and Mildred Troxel; her sister Jane Plumlee; and brothers Van Peter

Troxel and Joseph Burke Troxel, all from Tennessee. No services are planned at this time, but Joyce would appreciate any donations in her honor to Marfa Public Radio, the Alpine Public Library, the Alpine Humane Society, and Grand Companions.

Guillerma Ramirez

Guillerma Ramirez, 91, passed away on Aug. 13, 2021 in Pflugerville, Texas.

Rosary will be held at Our Lady of Peace Catholic Church in Alpine, Texas, on Friday, Aug. 20, 2021, at 7 p.m.

Funeral services will be held at 10 a.m. on Saturday, Aug. 21, 2020, with Fr. Victorino Loresca of Our Lady of Peace Catholic Church officiating. Burial will be at Holy Angels Cemetery in Alpine.

Marfa silversmith rocks with gemstone business

BY ROXANNE HILL
 Staff Writer

Marfa is internationally known as a funky arts hub, but another reason why it's worthwhile to venture out is to take a glimpse at a billion-year-old fossil among other dazzling rocks, minerals, and unique jewelry items not found in a typical jewelry shop. Just ask Marfa resident Paul Graybeal, a silver smith who has owned Moonlight Gemstones since 1989.

Graybeal, originally from Black Hills, S.D., first ventured to the Big Bend in 1984 when he took a job at McDonald Observatory in Fort Davis. He later discovered his real passion was in collecting and polishing rocks, minerals, and ancient fossils, and the rest is history.

Graybeal is fascinated by plumes and agates, semiprecious minerals produced by 35 million years of volcanic activity, and many of which were found at Woodward Ranch south of Alpine.

At Moonlight Gemstones, Graybeal makes custom handcrafted jewelry in a wide variety of styles, including custom belt buckles, bracelets, earrings, pendants, rings, and much more.



Paul Graybeal stands by his rock shop in Marfa.
 Avalanche photo by Roxanne Hill

They can all be made to the customer's specifications.

Agates are a fascinat-

ing part of geologic history, as they were produced by 35 million years of volcanic activi-

ty that resulted in beautiful plumes and colors. Besides rocks and minerals, Graybeal also carries a wide and unique assortment of fossils and gems from all over the world.

He said business is booming now due to the influx of tourists, and many of the jewelry pieces sell out.

"A lot of it comes from Mexico from vendors that are licensed to bring it out of mines, and I polish the rare agates," he said.

Plans are already in the works to bring his cool rock collection to the Chihuahuan Desert Gem and Mineral Show next year, a show that Graybeal had hosted throughout the years. He enjoys venturing into the outdoors to find unique and rare specimens.

Joining Graybeal is stepson Ben Toro, a silversmith who helps out in the shop.

Graybeal feels fortunate to be able to work in something that brings him much enjoyment, and added, "I am blessed to have a talent that I can make a living from, and it's really simple, primitive, style jewelry."

Moonlight Gemstones is located at 1001 West San Antonio Street in Marfa, and is open Monday through Saturday from 10 a.m.-6 p.m. and on Sunday by appointment.

SUNSHINE HOUSE INC.
 Sunshine House Senior Citizens Center Meals on Wheels
 402 E. Holland Ave. • Alpine, Texas 79830 • 432-837-5402
 www.sunshinehousealpine.com

Thank you for the following donations:

James M. Smith	Busy Bee Quilts
Judy Ford	Richard and Jean Zimmer
Lany and Elizabeth Cordova	Desert Heart, Inc.
Porter's Thriftway	Mildred Roach
Anonymous	Ron Wheatley
Linda Neely	Elizabeth Tansky

Our Vision: A hunger-free, healthy community.
Our Mission: To provide quality nourishment and social enrichment in the lives of seniors, the homebound and disabled in Alpine, Texas.
 Join us for lunch Monday through Friday, 11:30 - 12:30. • Cost is \$6.00 per person.
 Sunshine House is an equal opportunity provider and employer.

Restaurant Guide

\$6 a week gets you a spot in our restaurant guide
 www.alpineavalanche.com

ESPRESSO... Y POCO MAS

Located in Terlingua Ghosttown next to La Posada Milagro Guesthouse
 432-371-3044
 www.laposadamilagro.net
 Open 8am - 2pm Mon. thru S.
 Menu items (some items change daily):
 Breakfast burritos, breakfast english muffins, eggs benedict, quiche, breakfast pastries, organic fair trade coffee, espresso, cappuccino /latte /mocha, fresh squeezed juices, smoothies, homemade soups, ham /turkey / chicken breast sandwiches, Reuben sandwiches, meatloaf sandwiches, curry chicken sandwiches, rotisserie chicken & picnic lunches, fruit pies, cobblers, brownies, tres leches cake.

REATA RESTAURANT

COCINERO: Beef • Chicken • Shrimp
STARTERS: Tortilla Soup Bowl • Jalapeno and Cilantro Soup • Bacon Wrapped Shrimp with Onion Jam and Pico de Gallo • Bacon Wrapped Asparagus • Tumbleweed Onion Rings with Spicy Serrano Ketchup • Alpine Black Bean & Chicken Nachos

CF Burger with Aged Cheddar Cheese on a Kaiser Roll • Fried Chile Relleno stuffed with Cream Cheese, Corn and Peppers • Carne Asada with Reata's Cheese Enchiladas • Chicken Caesar Wrap with Hand Cut Fries • Tenderloin Tacos with Sundried Tomato Cream Sauce • Grilled Chicken Breast topped with Mango Chutney

SADDLE PACK COMBINATION:
 (Your choice of any two items)
 Cup of Tortilla Soup • Cup of Jalapeno and Cilantro Soup
 Cup of Daily Soup • 1/2 Reata Club or Steak Sandwich
 1/2 BLT Sandwich with Peppercorn Bacon



SAFE TRAVELS START HERE

See us for all of your vehicle maintenance and repair needs to ensure your car is operating safely and efficiently.

FREE Tire & Brake Inspections

Call or visit us online to book your fast, free inspection service.

We also do:

- Exhaust Service
- Lube
- Brakes
- Front End Alignments
- Shocks
- Welding
- Struts
- & more!



2601 E. Hwy 90 | Alpine | 432-837-5030

GIVE ME A CALL TODAY, I'D LOVE TO HELP YOU!
 ERIC WELCH • eric@oasistireco.com

NOTICE OF PUBLIC HEARING ON TAX INCREASE

A tax rate of \$0.421531 per \$100 valuation has been proposed by the governing body of BREWSTER COUNTY.

PROPOSED TAX RATE	\$0.421531	per \$100
NO-NEW-REVENUE TAX RATE	\$0.369200	per \$100
VOTER-APPROVAL TAX RATE	\$0.421531	per \$100

The no-new-revenue tax rate is the tax rate for the 2021 tax year that will raise the same amount of property tax revenue for BREWSTER COUNTY from the same properties in both the 2020 tax year and the 2021 tax year.

The voter-approval rate is the highest tax rate that BREWSTER COUNTY may adopt without holding an election to seek voter approval of the rate.

The proposed tax rate is greater than the no-new-revenue tax rate. This means that BREWSTER COUNTY is proposing to increase property taxes for the 2021 tax year.

A PUBLIC HEARING ON THE PROPOSED TAX RATE WILL BE HELD ON MONDAY, AUGUST 30, 2021, 9:30 A.M. at the BREWSTER COUNTY COURTHOUSE, COMMISSIONERS COURTROOM, 201 W. AVE. E, ALPINE, TEXAS. The proposed tax rate is not greater than the voter-approval tax rate. As a result, BREWSTER COUNTY is not required to hold an election at which voters may accept or reject the proposed tax rate. However, you may express your support for or opposition to the proposed tax rate by contacting the members of the COMMISSIONERS COURT of BREWSTER COUNTY at their offices or by attending the public hearing mentioned above.

YOUR TAXES OWED UNDER ANY OF THE TAX RATES MENTIONED ABOVE CAN BE CALCULATED AS FOLLOWS:

$$\text{Property tax amount} = (\text{tax rate}) \times (\text{taxable value of your property}) / 100$$

FOR the proposal: ELEAZAR CANO, BREWSTER COUNTY JUDGE;
 JIM WESTERMANN, COMMISSIONER PCT. 1;
 SARA COLANDO, COMMISSIONER PCT. 2;
 RUBEN ORTEGA, COMMISSIONER PCT 3;
 MIKE PALLANEZ, COMMISSIONER PCT. 4

AGAINST the proposal: NONE
PRESENT and not voting: NONE
ABSENT: NONE

The 86th Texas Legislature modified the manner in which the voter-approval tax rate is calculated to limit the rate of growth of property taxes in the state.

The following table compares the taxes imposed on the average residence homestead by BREWSTER COUNTY last year to the taxes proposed to be imposed on the average residence homestead by BREWSTER COUNTY this year.

	2020	2021	Change
Total tax rate (per \$100 of value)	\$0.389601	\$0.421531	Increase of \$0.03193
Average homestead taxable value	\$126,364	\$136,679	Increase of 8.16%
Tax on average homestead	\$492.32	\$576.14	Increase of \$83.82
Total tax levy on all properties	\$3,632,580	\$4,258,396	Increase of \$625,816

For assistance with tax calculations, please contact the tax assessor for BREWSTER COUNTY at 432-837-2214 or taxassessorcollector@brewstercotad.org or visit www.brewstercountytx.com for more information.

Gun show has something for everyone

BY GAIL DIANE YOVANOVICH
Managing Editor

The annual Lions Club gun and knife show is coming up over Labor Day weekend, and it's a welcomed return after COVID canceled the popular event last year.

Held at the Pete P. Gallego Center on the Sul Ross State University campus in Alpine, the show runs Saturday and Sunday, Sept. 4-5, with Saturday hours 9 a.m.-6 p.m., and Sunday from 10 a.m.-4 p.m. General admission is \$5, and children under 12 get in free with an adult. Active military with ID also get in free.

Bring used eyeglasses to receive \$1 off admission.

Food and beverages will be available, with concessions provided by Old Gringo.

Alpine Lions Club First Vice President and Treasurer John Sutterfield said around 55 vendors will



Visitors examine vendors' wares at an earlier Lions Club gun and knife show at the Gallego Center in Alpine.

Avalanche photo by Gail Diane Yovanovich

grace the Gallego Center, including several from the Alpine area, as well

as from New Mexico and Tennessee.

"We have a lot of previous vendors back, and a few new vendors," Sutterfield said. "They heard about the show and want to be part of it."

The Lions will also provide complimentary tables for local charitable and non-profit organizations.

All profits from the show will go to support local charities and provide eye exams and glasses for local residents and eye screenings for school children. Proceeds also support the Texas Lions Camp that provides free camp for Texas children with disabilities, Brown Santa, and other local needs as they arise.

The Lions also participate in the Alpine Fourth of July and Christmas parades, and sponsor Santa on the Square.

Although there will be guns galore filling the Gal-

lego Center, both Sutterfield and show Co-Chair Jim Westermann stressed the event was more than just guns and knives. Jewelry, leather goods, clothing, and a host of other items will be available for perusal and purchase.

"Come on out," Westermann urged. "It's a good time for the whole family. This is our single biggest fundraiser, and we appreciate the public's support."

For more information contact Sutterfield at 432-295-2088.

Dr. Anusha Kotha, DDS
General Dentist

310 S. Allen Ave.
Monahans, TX 79756
Tel: 432-943-5555

402 E. Austin St
Kermit, TX 79745
Tel: 432-586-2911

City rehires Ponton as attorney

BY ROXANNE HILL
Staff Writer

Approval of a new city attorney and illegal dumping were the focus of Alpine City Council's regular meeting on Aug. 17. Council, Ward 3, Sara Tandy, was not present at the meeting. Council, Ward 1, Judy Stokes brought forth a motion to discuss, consider, and approve appointing interim city attorney Rod Ponton to full-time city attorney.

Council, Ward 2, Chris Rodriguez, addressed Ponton in open session, and cited issues regarding Ponton's past record as city attorney. Rodriguez claimed Ponton had overbilled the city and mishandled issues with the city police department, as well as litigation with Union Pacific railroad, among other issues. Ponton denied all allegations, and stated they were false.

During public comment, Alpine resident Oscar Cobos accused Ponton of ethics violations with the City of Pecos, and urged

the council to reconsider appointing him as city attorney. Nevertheless, the council voted 3-1 in favor, obtaining votes by Stokes, Council, Ward 4, Martin Sandate, and Council, Ward 5, Jerry Johnson. Rodriguez was the lone nay.

In other business, the city's rampant problem with illegal dumping became the next topic of discussion, with Interim City Manager Megan Antrim indicating that Code Compliance had received plenty of complaints. Antrim said she and Adelina Beall, environmental services coordinator, had a game plan to handle the problem.

Beall then presented information on the city's bulk pickup schedule and extending the hours of operation for the Hal Flanders Recycling Center. The recycling center will now be open Tuesday through Saturday, from 9 a.m.-5 p.m.,

and closed on Sunday and Monday. Additional roll-off containers will be provided for residents' use at the recycling center to provide residents with more options to dispose of bulk trash.

Antrim expressed optimism about the strategies to handle illegal dumping violations, and urged residents to report violations to the city.

"You will start seeing the town change, hopefully by encouraging the public to not continue to dispose of things," she said. "We are going to work with TDS to address the current issues, and we really want to encourage the citizens to interact with us."

Antrim said that the city will continue to monitor problem areas by setting up surveillance cameras, and asked residents to cooperate by taking photographs and reporting illegal dumping violations to the city in writing. Code Compliance will issue citations for violators, and TDS will work to clean up problem loca-

tions temporarily.

"We already have an initial list that we created, so we know which areas are the ones out of hand," said Antrim.

Finally, City Tourism Director Chris Ruggia, Tourism Coordinator Heather Yadon, and Animal Control Officer Jennifer Stewart presented updates and highlighted recent happenings regarding their respective departments.

The next regularly scheduled city council meeting is set for Tuesday, Sept. 7, at 5:30 p.m. in the city council chambers and via Zoom videoconference.



Rod Ponton



**IN THE PAST YEAR, WE
SUFFERED THROUGH MANY
HISTORICAL EVENTS.**

Be prepared for the next one with
Farmers insurance.



AUTO | HOME | BUSINESS | LIFE

432.837.2225

Dona Ward Blevins
Your Local Agent

2100 W Hwy 90, Ste B
(next door to Mountain View Properties)
ALPINE, TX 79830

DBLEVINS@FARMERSAGENT.COM

ADVERTISEMENT FOR BIDS CITY OF ALPINE, TEXAS WWTP IMPROVEMENTS

Separate sealed bids for the construction of **Wastewater Treatment Plant (WWTP) Improvements** will be received by the **City of Alpine, Texas** until **3:00 PM**, on **August 26, 2021**, at **100 N. 13th Street, Alpine, TX 79830**, and then at said location publicly opened and read aloud. This project consists of the provision and replacement of two (2) aerators and motors, installation of an automated bar screen, installation of electrical components and electrical upgrades, and appurtenances.

The Contract Documents, consisting of Advertisement for Bids, Information for Bidders, Bid Proposal, Bid Bond, Agreement, Performance and Payment Bonds, General Conditions, Notice of Award, Notice to Proceed, Plans, and Specifications, may be examined at the following location:

Jacob & Martin, LLC
3465 Curry Lane, Abilene, Texas 79606

The Owner reserves the right to waive any informalities and to reject any or all bids. Bids may be held by the Owner for a period not to exceed 30 days from the date of bid opening for the purpose of reviewing the bids and investigating the qualifications of Bidders prior to awarding of the contract.

Copies of the CONTRACT DOCUMENTS must be ordered online at www.jacobmartin.com. Orders for CONTRACT DOCUMENTS may include hard copies for pick up, mail out or digital download via www.jacobmartin.com. Upon verification of online payment, hard copies may be picked up at Jacob & Martin, LLC, located at 3465 Curry Lane, Abilene, TX 79606. Cost for hard copies of the CONTRACT DOCUMENTS will be **\$50.00** for half size. Cost for digital download of CONTRACT DOCUMENTS will be \$20.00. Contractors must purchase a set of CONTRACT DOCUMENTS to be considered a registered plan holder eligible to bid the project.

Bid Bond: A certified check or bank draft, payable to the order of the City of Alpine, negotiable U.S. Government bonds (at par value) or a satisfactory Bid Bond executed by the Bidder and an acceptable surety in an amount equal to five percent (5%) of the total bid shall be submitted with each bid.

City of Alpine Andres Ramos, Mayor August 5, 2021

BREWSTER COUNTY, TEXAS NOTICE OF ELECTED OFFICIAL PROPOSED SALARY CHANGES FOR FY 2022

In compliance with section 152.013(c) of the Local Government Code, The Commissioners Court does hereby give notice of salary and allowances for the elected officials of Brewster County. Elected officials' salaries will be set on Monday, August 30, 2021, at 9:30 a.m., as part of the FY2021-2022 budget adoption process. The public meeting will be held at the Brewster County Courthouse, 201 W. Avenue E, in the Brewster County Commissioners' Court room, Alpine, Texas 79830. The officials and the proposed salaries are shown below:

Elected Official	Current		Proposed		Difference
	Base Salary	Longevity/Spec Qual.	Base Salary	Longevity/Spec Qual.	
County Judge	54,704.00	25,600.00	57,439.20	25,800.00	\$ 2,935.20
County Clerk	52,000.00	0.00	54,600.00	0.00	\$ 2,600.00
County Commissioner, Pct. 1	23,920.00	0.00	25,116.00	0.00	\$ 1,196.00
County Commissioner, Pct. 2	23,920.00	0.00	25,116.00	200.00	\$ 1,396.00
County Commissioner, Pct. 3	23,920.00	4,748.00	25,116.00	4,948.00	\$ 1,396.00
County Commissioner, Pct. 4	23,920.00	600.00	25,116.00	800.00	\$ 1,396.00
Justice of the Peace, Pct. 1	42,890.64	0.00	45,035.17	200.00	\$ 2,344.53
Justice of the Peace, Pct. 2	23,920.00	1,200.00	25,116.00	1,400.00	\$ 1,396.00
Justice of the Peace, Pct. 3	30,839.12	2,000.00	32,381.08	2,000.00	\$ 1,541.96
County Attorney	52,000.00	30,000.00	54,600.00	30,000.00	\$ 2,600.00
District Judge	7,841.60	600.00	7,841.60	600.00	\$ ---
District Clerk	52,000.00	2,000.00	54,600.00	2,000.00	\$ 2,600.00
County Treasurer	52,000.00	400.00	54,600.00	600.00	\$ 2,800.00
County Tax Assessor/Collector	52,000.00	1,600.00	54,600.00	2,000.00	\$ 3,000.00
County Sheriff	59,904.00	4,800.00	62,899.20	7,250.00	\$ 5,445.20
Constable, Pct.1	12,471.68	4,000.00	13,095.26	4,000.00	\$ 623.58

Opinions

ONLINE POLL

RESULTS

Previously, the Avalanche asked:

What do you think about a physical border wall being built in the Tri-County?



I think it's a great idea throughout the area, and should be started as soon as possible.	37.3%
It should be built anywhere it's geographically feasible and where it won't interfere with tourism.	6.4%
I favor a "virtual wall" that uses the latest technologies to guard and defend borders.	30.9%
A wall of any kind is merely a "feel good" fix, since those who want in will find a way to get in.	25.5%

THIS WEEK'S QUESTION

Now, the Avalanche asks:

If you're traveling this summer, does COVID scare you?

- Oh yes, and I won't be traveling because of COVID.

- Yes, but I will take precautions to stay safe.

- I've had the vaccine, so I'm not worried.

- I'm not concerned at all. Life moves on.

Vote for this week's poll online at: www.AlpineAvalanche.com

LETTERS

Send us your letters.

Please include your name, address and phone number for verification purposes. Only your name and city will be published.

Letters should be no more than 300 words.

Letters become the property of the Alpine Avalanche and may be edited prior to publication for spelling and grammatical errors, clarity and length. Ad hominem attacks will not be accepted. Letters that include profanity or libel will not be printed.

Send your letters to editor@alpineavalanche.com by noon Monday for consideration.

STAFF



J.T. Maroney
Publisher

publisher@alpineavalanche.com

Gail D. Yovanovich
Managing Editor

editor@alpineavalanche.com

Shelley Maroney
Office Manager

bookkeeping@alpineavalanche.com

Roxanne Hill
Staff Reporter

hill@alpineavalanche.com

Glenn McCarthy
Sports Correspondent

ghmccarthyiii@gmail.com

432-837-3334

www.AlpineAvalanche.com
Facebook: Alpine Avalanche

ALPINE AVALANCHE (014 800) is published every Thursday morning at 118 N. 5th St., Alpine, TX 79830. Periodical postage paid at Alpine, TX.

POSTMASTER: Send address changes to Alpine Avalanche, P.O. Box 719, Alpine, TX 79831.

Subscription rates in Brewster, Jeff Davis and Presidio counties are \$42 per year, \$48 in-state and \$52 elsewhere.

Any erroneous reflection upon the character, standing or reputation of any person, firm or corporation will be corrected when such occurs in this newspaper and is brought to the publisher's attention.



BOONIEVILLE



Half full



ELEAZAR CANO
Brewster County Judge

It's Sunday evening. Time is 10:15 p.m. I am working on coordinating a visit tomorrow with my babies. Need to figure out how to pick up my son and his three-year-old sister. She needs to nap at 12:30-ish. We have to be at school with my boy at 2:30 p.m. If I don't take her with us, she gets her feelings hurt, and throws a fit.

My boy Koa and I need to go to Dillard's and make sure his outfit fits. God willing, I am taking him and his little sister to my oldest daughter's wedding over the weekend in Austin. Koa starts the second grade on Wednesday. Does this sound familiar? Stressful or a little nuts? All of the above? Welcome to my world.

We all have our own crosses to bear. As I was writing the above itinerary, those were my initial thoughts. However, now I'm thinking how blessed I am to have five beautiful, healthy children. I am also blessed to have my health and have the money and a reliable vehicle to travel and be able to attend my son's meet-the-teacher function tomorrow.

Over the weekend, I will have all

five of my babies together for the first time ever. It's a happy occasion, versus the celebration of someone's life that passed. Because of freewill, sometimes we regret mistakes, and beat ourselves up over bad choices that we have made. Nevertheless, life is all a matter of perspective. We are all imperfect beings. As such, wouldn't it stand to reason that our making mistakes is perfectly rational, reasonable, logical, and normal?

One may ask how all this translates into my position as County Judge. The answer is simple. The person described above is who I am. Being the county judge is what I do. In reflecting back to March of last year, I remember making the following statement to our local health authority - "The sky isn't falling."

Her response was, "Yes it is."

Troubled waters are especially tough

to navigate. Decisions that were made were not based on fear, but rather medical and scientific research and data available at that time. My perspective was shaped by medical doctors and scientists with areas of expertise too obscure to even try to understand.

Unfortunately, the politics behind the decisions then and now are clouding public health concerns and mandates. The one thing that I can say without a doubt is that county judges are entrusted with protecting the public health of the constituents that live in their county. Does the word dichotomy accurately define the reality that we, as local elected officials, are facing?

Let's go back to where this piece started. The love that I have for my babies and the things that I choose to engage in is because of that love. If we all take the personal responsibility that our governor is proclaiming to heart, and use love as the motivating factor, wouldn't we all be good stewards?

In the name of love, please take responsibility for your actions and behaviors.

LETTERS TO THE EDITOR

Stand up now!

In Australia, New South Wales, the government plans to take 24,000 children, separate them from their parents, put them in a stadium, and forcibly inject them with experimental products known as C-19 vaccines.

The New Zealand government is locking down that nation because of one PCR positive test. The CDC admits that PCR testing can only show the presence of nucleic acids, but cannot tell us anything about infection.

Canada plans to forbid inter-provincial travel on planes, trains, and other forms of public transportation to those who have not gotten injected, as does the

U.S. Congress and Joe Biden.

If this is not the time to consider that what we are experiencing has nothing to do with health, when is that time? This is about control.

C-19 injections do not prevent infection or transmission. Data about dangers and deaths are being withheld and manipulated. Just last week we learned that Moderna failed to report 300,000+ injuries in just three months. The CDC is not giving an accurate report of deaths. However, as it stands the numbers of deaths within three days of injection are far past any prior tolerance of death from any medical product. The refusal to stop such products until

these are investigated is unethical and illegal. Charges of crimes against humanity have been filed in multiple nations.

Americans, we must wake up. This virus has a survival rate of 99.8%. There are safe treatments and prophylactics that can and should be used. We can beat this disease. What we cannot stop unless we wake up is the attempt to control the population by a few very wealthy stakeholders from Davos and the World Economic Forum. They have already said they want to change our world so "you will own nothing and you'll be happy." Their words, not mine.

These people want your

money put in a digital wallet that they will control. If you don't do as you're told, you won't have access to your funds. That is what the COVID passport is really about - your digital ID, your enslavement.

This is a spiritual and economic war against the people of the world by a few who think they are gods and have the right to subjugate humanity. If that sounds crazy, I refer you to their own site, weforum.org, where you can read about their plans.

This isn't about a virus. These people are coming for your children. Stand up now and protect them.

Jill Berkana
Fort Davis

More on the virus and vaccines

It has been common knowledge for years that all major developing countries have possessed the ability to conduct germ warfare. The Wuhan crisis is no exception. Was a virus created in the lab and deliberately leaked into the local wet markets for experimentation on the people of Wu-

han? This is totally consistent with China's poor record on civil rights, and its complete lack of concern for all of the Chinese people. The virus created in Wuhan is by no means a poor reflection on all Asians, especially Asian-Americans. It is simply a reaffirmation of the Communist Chinese government's unconscionable

disdain for human life. They are the ones to blame. Now we, the American people, will soon be required by our government to get the vaccine without being told what are the short/long term side effects. This is inherently a violation of our civil rights since the vaccine has never been approved by the Food and Drug Administration.

The one benefactor from the spread of the virus is the environment. Consider how working from home reduces the amount of carbon emissions caused by the automobile. Why aren't the Biden Administration and various environmental groups encouraging this?

Joe Bialek
Cleveland, Ohio

Thank you from Big Bend Ranch Rodeo!

Full house crowds were treated to lots of good cowboy action last weekend at this year's Big Bend Ranch Rodeo, and crowds welcomed a rain each afternoon to help cool off.

The Big Bend Ranch Rodeo is grateful for the support we have received the last 21 years from countless individuals and businesses in Alpine and beyond. Thank you! We could not have this rodeo weekend if it were not for you all.

We have already starting planning for the 2022 Big Bend Ranch Rodeo, so mark your calendar for Aug. 12-13, 2022. You don't want to miss the fun!

Chachi Hawkins
Big Bend Ranch Rodeo Committee

COVID-19 therapeutics

Monoclonal anti-bodies, hydroxychloroquine, ivermectin, fenofibrate, and molnupiravir.

Monoclonal anti-bodies were used to treat President Trump for COVID-19, and its use has been requested by Governor DeSantis to help control infections in Florida. Inexpensive and approved drugs such as hydroxychloroquine and ivermectin are used by doctors successfully in places like Africa, India, and the Philippines. Unfortunately people have been forced to use them illicitly in the U.S. and around the world due to therapeutics having been unduly suppressed.

Fenofibrate and molnupiravir have been tested successfully by labs in Israel and other locations. They need to be made available to all through their doctors as soon as pos-

sible. The question posed here is why are therapeutics being suppressed in the U.S. and other places? Is it the billions of dollars in sales of trial vaccines that would be lost, the political control of the masses that would be gone, or is it a combination of the two?

It may be too late for the thousands who died while politicians and medical institutions played God with our lives for the sake of profit and political control. It's not too late for us to speak up loudly and often about this problem. If possible go online and do your own research concerning these therapeutics, then contact your doctors and representatives to demand answers, now and often. We the people can make a difference.

James R. Le Blanc
Fort Davis

CENTURY TRAILER COMPANY

2900 W. Dickinson Blvd. Fort Stockton, TX
432-336-8797
centurytrailersftstockton.com



**Trailer Sales,
Parts & Service,
Truckbeds
& Grill Guards**

32' Gooseneck Brand



Wifi for the whole family!

Let us help you with the best plan that fits your needs. We have the largest Fiber network in the Big Bend Region

Serving Fort Stockton to Terlingua to Presidio and Beyond.

Sign up for fiber internet today.

800.592.4781

www.bigbend.com



www.alpineavalanche.com

THE ALPINE AVALANCHE

Heard on the STREET

Our Avalanche reporter asked, "Do you think a dark sky ordinance is needed in the Big Bend area?"



Sheryl Markin, Alpine:
Yes and no. Yes, so we can enjoy the beauty of the night sky, and no, because of security issues around darker areas.



Molly Dumas, Terlingua: Yes, I do. I think it's important to preserve one of the most amazing and unique things in the Big Bend. I hope my grandchildren will still have a place to go where they can see the Milky Way, zillions of stars, and get a sense of perspective you just can't get in the city, surrounded by man made lights.



Lee Hoy, Fort Davis:
Yes, most definitely. As night sky photographers, we need to do everything possible to preserve it. I live in direct view of the observatory, and I'm happy to abide by it. It's a great way to bring in tourism and more folks out here.



Brittany McDonald, Alpine: I believe that it is needed to keep the natural skies available to be seen. We are a unique county in the aspect of having the observatory, and bright lights hurt the views of the skies.



Doug Camp, Alpine:
People come here from literally all around the world to see our Marfa lights and go to the observatory in Fort Davis. But I wouldn't mind having some streetlights along the highway to help out people driving to avoid hitting deer.

GSM INSURORS OF WEST TEXAS

Alpine Texas

Bethany Brookover, Agent — Pate Brookover, Agent

432.837.7419

AUTO • HOME • BUSINESS • HEALTH • LIFE

Alpine Retirement Low Income Housing

62 and over
1 Bedroom Units
All Electric
Subsidy accepted

To apply go to:

alpineretirementhomes.com
Or call: 432-837-2259



Send your community events to editor@alpineavalanche.com.

UPCOMING EVENTS

August 26 Medicare Education Class, 3-4 p.m. at Alpine Public Library, 805 W. Ave E., in AEP room. For more information, contact Miguel Morales at 432-234-7485.
Sept. 4-5 Gun and Knife Show, Saturday 9 a.m.-6 p.m., Sunday 10 a.m.-4 p.m., at the Gallego Center on the Sul Ross campus. Sponsored by Alpine Lions Club. Concessions available. Proceeds benefit local charities and Lions Club charitable activities. For more information, contact John Sutterfield at 432-295-2088.

ONGOING EVENTS

Alcoholics Anonymous, 502 E. Lockhart Ave. Schedules available on front door. For more information, call 915-562-4081 or aa-intergroup.org.
Alpine Lions Club meeting, noon Tuesdays at the Sul Ross University Center, Room 210.
American Legion Post 79 meeting, 6:30 p.m., second Monday each month, Legion Hall, 306 W. Sul Ross Ave. Dinner provided.
American Legion Auxiliary meeting, 6:30 p.m., third Monday each month, Legion Hall, 306 W. Sul Ross Ave.
Big Bend Community Chorale rehearsals on Monday evenings at 6 p.m. in the First United Methodist Church sanctuary in Alpine. All are welcome, but first contact Andrew Alegria at Andrew.alegria@sulross.edu, call 432-837-8216, or visit bbc-chorale.wixsite.com/bbcc.
Citizenship Classes, at Alpine Public Library by appointment only, 805 W. Ave. E. 432-837-2621
ESL Tutoring, at Alpine Public Library, 805 W. Ave. E. Call 432-837-2621 to make an appointment.
GED tutoring, at Alpine Public Library, 805 W. Ave. E. Call 432-837-2621 to make an appointment.
Kiwanis Club of Alpine, noon, Wednesdays at Spicewood restaurant, 2612 W. Hwy. 90, Alpine. 805 W. Ave E. After school club for grades one to three.

See more at alpineavalanche.com.

Going on at the library

Alpine Public Library will offer fall citizenship classes begin Wednesday, Sept. 8, and continue every Wednesday from 6:30-7:30 p.m. Registration is required. Call Linda at 432-294-4289 to sign up.
To register for GED classes at the library, call 432-837-2621.
Finally, English as a second language conversation classes are now taking place on Tuesdays from 6:30-7:30 pm.

MIDWEEK MERCANTILE AND MUSIC

August 26th • 4-7pm
3rd Street between Avenue E & Holland Avenue

FEATURING A BACK TO SCHOOL

CIRCUS

with GUNSLINGERS Old Fashioned Candy Store
Face painting • Miss Behave the Clown • Popcorn • Games

LIVE MUSIC BY:
DOUG MORELAND



3rd Street will be closed for art, craft and food vendors, with music to be enjoyed on the Visitor Center lawn. Bring your own blankets or chairs!



Sponsored by:



capitalfarmcredit.com
NMLS493828

432.837.5948 | 108 West Avenue E | ALPINE
ROSWELL LIVESTOCK AUCTION SALES, INC.

SALE DATE: MONDAY, AUGUST 16, 2021

635 head of cattle sold on a lower market, with excellent buyer attendance. This is the top of the market and prices range down from this according to quality, condition, and fill. Compared to the last week:

COMPARED TO LAST WEEK:
Stocker Calves: \$1.00 to \$3.00 lower
Feeder Cattle: \$1.00 to \$2.00 lower
Packer Cows and Bulls: \$4.00 to \$5.00 lower

300# - 400# Steers	193.00 to 215.00
300# - 400# Heifers	180.00 to 184.00
400# - 500# Steers	176.00 to 193.00
400# - 500# Heifers	155.00 to 180.00
500# - 600# Steers	165.00 to 176.00
500# - 600# Heifers	153.00 to 155.00
600# - 700# Steers	146.75 to 165.00
600# - 700# Heifers	139.00 to 153.00
700# - 800# Steers	135.00 to 146.75
700# - 800# Heifers	129.00 to 133.00
Packer Cows	70.00 to 76.50
Canner & Cutter Cows	63.00 to 69.50
Packer Bulls	90.00 to 95.00
Feeder Bulls	75.00 to 83.00
Cow / Calf Pairs - Top Half	1350.00 to 1750.00
Bred Cows - Top Half	1000.00 to 1400.00



HUGE CLOTHING SALE

25% OFF
ALL KIDS

This includes boots, shoes, clothes, accessories, and toys.



2600 East US 90
Alpine
432-837-5792



BUCKS • FROM 1

two halves of Badger Stadium simultaneously. Fellows has his work cut out for him this year, having to replace his whole starting offensive line, and star defensive end Mason Cavness is off to powerhouse Mary-Hardin Baylor. He also had his work cut out for him over-seeing both scrimmages at

the same time, but bounced back and forth with veteran ease.

Thankfully Fellows has what amounts to a three-year starter at signal-caller in Jayden Canaba. Canaba went to work early in the scrimmage, hitting a streaking Jordan Rodriguez down the right sideline for the

first goal line crossing, and a sweet 30-yard hookup for pay dirt.

The defense, much like the offensive line, is a work in progress. Alpine allowed three touchdowns on Coahoma's first set of plays. Fellows and his defensive coaching staff now know what they need to fix. The defense stiffened up as the scrimmage wore on. Also, Fellows did not play some of his returning starters like outside linebacker Shaun Foster and Canaba on defense to let some of the newer guys get their feet wet at the varsity level.

"Some of those kids like Foster and even Jayden and a few others, we didn't even play them on defense because we wanted to see the younger kids. We really treat it as a practice, and we wanted to get them on film, and see what things are going to happen with them," Fellows quipped.

First year defensive back coach J.P. Parker, who is also the Sul Ross starting cornerback, said, "Turnovers after turnovers after turnover - we teach them every day to run to the ball and make turnovers."

About getting to fit footballers in a different colored jersey instead of his own teammates in practice, Foster said, "Putting pads on knowing you don't have to hit your teammates is a huge adrenaline rush because you can actually go all out and seeing another colored jersey makes it even more a blast!"

Foster is also excited for his senior year to begin. "It means a lot, it's one of those special things you get to have with COVID out there," he said.

Indeed, take everything in when a season is subject to getting canceled, especially a senior year in high school.

Tonight, the Pecos Eagles will be in Alpine for the second Fightin' Buck scrimmage.

Alpine will open the season with a home game against the Jefferson Silver Foxes from El Paso. Jefferson went 1-5 a season ago in Class 5A-2.


The Bucks will then play neighboring rival Fort Stockton in an away contest on Sept. 3. Another game of note is a home matchup with defending 3A-2 District champion Crane on Oct. 22.

Dedicating a new chapel



On Aug. 10, Alpine Memorial Funeral Home dedicated its new chapel on Sul Ross Avenue. In the photo, funeral home staff members Delma Garcia, Joe Greer Denham III, Leaneth "Lea" Catano, Larry Cordova, Lonny Hillin, and Linda Hillin stand ready to greet visitors at the chapel.

Avalanche photo by Gail Diane Yovanovich



Rite of Christian Initiation of Adults (RCIA)

- Are you a visitor to the church who's not Catholic but feels drawn to the Faith?
- Are you a baptized Catholic who's never received Communion or Confirmation?
- Are you a Catholic who just wants to know more about the Faith?

If you answered "YES" to any of these questions you should consider participating in the RCIA Process.

On **September 7, 2021**, classes for the Rite of Christian Initiation of Adults a journey of faith – a journey toward a deeper relationship with Jesus Christ begin. Please call the Office of Our Lady of Peace Church for more information **432-837-3304**.

real estate auction

Schlumberger Surplus Land Sells Without Reserve

ALPINE, TX • 51082 State Highway 118
Four parcels, non-contiguous, contain a total of 382+/- acres. Brewster County Property ID's: 13440, 30170, 30286.

Lat/Longs:
Northern Parcel - 30.381553, -103.554503
Central Parcel - 29.678266, -103.590799
Western Parcels - 29.654611, -103.686105

Bid Online Only Sept 27 - 29 at auctionnetwork.com




Prefer Not to Wait for the Auction? Submit a Pre-Auction Offer!

800.801.8003 • williamsauction.com/TX

TX JEFFREY MICHAEL ASHBY RE LIC 550021. BUYER'S PREMIUM MAY APPLY.

TAXES • FROM 1

top of that. The Texas Legislature has capped us. If we go above the 3.5%, then we're subject to elections."

Cano justified possibly raising the tax rate on grounds of historically low tax rates in the county, increasing cost of living expenses, and the remote location of the county, which makes construction more costly.

Commissioner, Pct. 2, Sara Allen Colando, along with Commissioner, Pct. 3, Ruben Ortega, offered full

support of a tax increase.

"It's election time next year," Cano pointed out. "I am not going to let the fear of the bad keep me from doing what's right. I think we really need to consider going up on the tax rate to where it's the voter approval rate."

Commissioners approved the tax rate calculations as presented.

Next up, appraiser Aaron Garza with the County Appraisal District presented the 2021 certified values.

Garza stated that there were 20,686 total accounts. Garza said the total appraised value was around \$1.170 billion. The total assessed value was about \$1.125 billion. The net taxable value was about \$1.12 billion. Garza also said there were no longer any protests pending. Commissioners then approved the presentation and certified tax roll, along with the voter approval rate.

The next regularly scheduled commissioner's

court meeting, which will include a revised budget, is set for Wednesday, Aug. 25, at 9:30 a.m. in the commissioner's courtroom and via Facebook Live. Commissioners also approved changing the budget and tax hearing dates from Sept. 1, to Monday, Aug. 30, at 9:30 a.m. in the commissioner's courtroom and via Facebook Live. During that time, commissioners will also hold a special meeting to adopt the proposed budget and tax rates.

Capital Farm Credit, Alpine
West Texas National Bank, Alpine
Big Bend Saddlery, Alpine
Alpine Vet Clinic, Alpine
Porter's Thriftway, Alpine
Oasis Tire, Alpine
Highland Inn, Alpine
Flying W Ranch, Alpine
Dixon Water Foundation, Dallas
Stacey Wood, Alpine
Yarborough Ranches, LLP, Alpine, Midland
Alpine Visitor's Center
Emison/Y- Ranch, Alpine
Kyle and PeeWee Peebles
Power Pipe and Tank, Amarillo
Dr. Bonnie Warnock, Alpine
Spicewood, Alpine
Front Street Books, Alpine
Kings Saddlery
Buddy Knight, Marfa
Hunter Industries, San Marcos
Arrowhead Drilling and Well Service, Alpine
Jeff Gore Ministries, Coleman
Bo Henry, Coleman
Bill Johnson, Fort Stockton
Nikki Woodward

Paloma Blanca, San Antonio
C.G. Morrison, Alpine
Fort Davis State Bank, Fort Davis
Marfa National Bank, Marfa
McCoy's Building Supply
Something Special, Alpine
Weaver Leather, Oh.
John Pace & Assoc, Alpine
Quarter Circle Seven Hotel, Alpine
Liz Rogers, Alpine
Livestock Weekly, San Angelo
Isabelle Blair, Alpine
McCoy Remme Ranches, Fort Davis
WR Ranch, Alpine
Cason Sargent, Alpine
Schaeffer Outfitters
Diamond Wool
Professional Choice
Eddie Claire DuBois
Ken Collins, Pampa
Hardy Hole Drilling
Phytext, Odessa, Alpine
Hadley Kibbe, Alpine
Jenny Wood, San Antonio, Alpine
Rod DeVoll, Alpine
Trevor Hawkins, Alpine

Magoo's Place, Alpine
B&S Services, Alpine
Gary Dunshee, Alpine
Zesch and Pickett, San Angelo
KVLV/KALP, Alpine
Big Bend Trailers, Fort Davis
Wayne Baize, Fort Davis
LaCasita, Alpine,
Double K Flowers, Alpine
Atwood Hats, Alpine
9. Mesa Ranch, Brewster County
Red Brown Trucking, Valentine
Buy a Cowboy a Meal Donors
Alpine Lady Bucks 12U Traveling Softball Team, Alpine
Skinner's Drilling and Well Service, Alpine
McDonald's, Alpine
Holland Hotel, Alpine
El Paso Saddleblanket
Leoncita Cattle Company
GSM Insurors, Alpine
El Jardin, Alpine
Dr. Zach Dodson, Alpine
Kody Hawkins, Alpine
Kersten Criddle, Alpine
Peyton Hughs, Alpine
Bonnie Bratton, Alpine
Les deGraffenried, Alpine
Dakoda Leopold, Belton



BIG BEND RANCH RODEO

THANK YOU 2021 SUPPORTERS

AEP, Alpine / Fort Davis
John&Mary Ann Luedecke, Fort Davis
Krist King Whips, Ohio
Jenco Sales, Manchaca
Moore Maker, Matador
Acme Tent, Denver
Wyoming Traders, Wy.
Rancho Espuela Cattle Company, Fort Davis
Dennis and Donna Yadon, Alpine
Printco, Alpine
Sul Ross State University, Alpine
Weber Stirrups, Nampa, ID
Bary Clower, Palo Pinto
Los Chiveros, Valentine
Jess and Colby Smith, Alpine
Quality Inn, Alpine
Chris Ruggia, Alpine
Cathy English, Alpine
Kelby Sargent, Alpine
Leddie, Ollie, Brucks Wood, Alpine
R&D Cattle Company, Presidio County
Janna Stubbs, Alpine
Stewart Schmidt, New Mexico
Tony Gonzales For Congress
Deguerin and Dickson, Alpine, Houston
Dr. Iris Korus, Alpine

Alpine Avalanche
Schaefer Outfitters, Mesilla Park, NM
Ray Hendryx, Kansas
3 Lazy S Rodeo Company
Hawkins Construction, Odessa
Big Bend Telephone, Alpine
Trans Pecos Bank, Alpine
Ashley Wood, Alpine
Lazy 8 Ranches, Coleman
Faith Alive Cowboy Church, Marfa
Alpine Framing, Shirley Biellier
Paula Wilson, Alpine
Lonnie Rodriguez, Alpine
Jeremiah Watt Productions
California Equine
Vogt Silversmiths
Seth Warnock, Alpine
Anaza
Maverick Inn, Alpine
Hampton Inn, Alpine
Big Bend Title, Alpine
The Feed Store, Alpine
Ashley Weatherford, Miss Rodeo Sul Ross
Shannon Weyerhauser, Miss Comanche Springs Queen
Comanche Springs Sweetheart Sadie Wood, Alpine
Hallie Wood, Alpine

WRCA, Amarillo
Tate McMullan, Fort Davis
Doc Spoon, Fort Davis
Big Bend Cowboy Church, Alpine
West Texas EMS, Alpine
Sul Ross State University Ranch Crew
Sul Ross State University Maintenance Crew
CJ Aragon, Alpine
Out West Feed and Supply, Alpine
Carroll Jack Lewis, Fort Davis
Carla Spencer, Alpine
Clayton Sargent, Alpine
Mattie Sargent, Alpine
Kacy Hawkins, Alpine
Sul Ross Rodeo Team
Rance Peebles
Levens Peebles
Chole Nolke, Miss Comanche Springs Princess
Norma Elliott, Alpine
Julie Hawkins, Alpine
Stormie McEntire, Alpine,
Kendra DuBois, Alpine
Mike Capron, Sheffield
Ginger Moore, Alpine
Ryan McGinnis, Devine
Uncle's Convenience Store, Alpine

ADD BEAUTY to your LANDSCAPE

FLAGSTONE, WEED BARRIER & LANDSCAPE MATERIALS

2700 E. HWY 90
ALPINE TEXAS 79831
432-837-7429

★ EST 1891

LOOKING BACK

SERVING THE BIG BEND
AND DAVIS MOUNTAINS COUNTRY

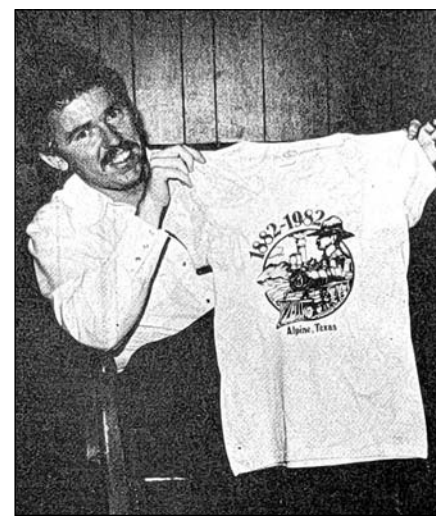
Alpine Avalanche

August 13, 1981
Mr. and Mrs. Joe R. Brady will celebrate their 50th wedding anniversary with their children and grandchildren at an open house Sunday, Aug. 16, from 3-5 p.m. at the Sunday House Club.



August 13, 1981
Well, it's not that cold, but judging from recent wet and cool weather, it wouldn't hurt to start thinking about a warm coat.

August 20, 1981
Alpine centennial quilt makers Madeline Alexolopus, Maggie Howell, Golden Young, and standing, Edith Schonberg, Ruth Watson, and Johnnie Neeley add a few more stitches to their project.



August 20, 1981
Bob Bell, local free lance illustrator, designed the logo for Alpine's Centennial Celebration. The logo, featuring a locomotive (the train was responsible for the origin and growth of Alpine),

Photos from Alpine Avalanche archives at Archives of the Big Bend, Bryan Wildenthal Memorial Library, Sul Ross State University.

Fig trees will recover from cold

Dear Neil: We've had this fig in our family for many years. This past winter was hard on it, but it's coming back, and it's bearing fruit. Should we cut the dead limbs off now or wait until the winter dormant season?

Trim them now. Make each cut flush with a healthy branch. There is no point in waiting. Reshape the plant as needed to restore an attractive form. If it involves trimming new growth, that pruning probably could wait until late winter so that you don't encourage a flush of new growth going into cold weather. But dead shoots can be removed at any time.

Dear Neil: What is the best way to get rid

GARDENER'S MAILBAG
by neil sperry

of goatheads?

When people use the name goatheads, I always clarify if they're talking about grass-burs (sticker burs) or the much more sinister weed with spines strong enough to puncture volleyballs and bicycle tires. If the latter, those are the true goatheads.

They are broadleafed weeds with leaves that don't look anything like blades of grass. Grass-burs, by comparison, are true grasses. Their slender, simple, and elongated leaves have parallel veins. So, all of that out of the way, you can use a broadleafed weed-killer (containing 2,4-D) to eliminate goatheads at any time that you see them growing actively, preferably earlier in the growing season than August. Grassburs can only be prevented, and that requires application of pre-emergent weed killer granules in late winter (two weeks prior to the average date of your last killing freeze) and again 90 days later. Three common pre-emergents are

Dimension, Halts and Balan.

Dear Neil: We planted a Chinese pistachio last fall. It leafed out this spring, but it has declined over the summer. We're not sure if the cold killed it. Should we just try again this fall?

That's a good plan. It was so new to your landscape that the cold probably was more than it could handle. Most Chinese pistachios in Texas came through just fine. They're lovely shade trees – definitely worthy of a second try.

Have a question you'd like Neil to consider? E-mail him at mailbag@sperrygardens.com. Neil regrets that he cannot reply to questions individually.



Fig bouncing back.

ACROSS

- 1 TX Steve Martin 1992 film: "___ of Faith"
- 5 Monte ____, TX
- 6 Gulf fabric
- 7 TXism: "___ pen" (hospital)
- 8 TXism: "___ slinger" (writer)
- 9 TXism: "took everything but the ___ lungs" (robbed)
- 16 former agcy. of Thomas, nominee of TX George H.W.
- 18 TXism: "has to sneak up ___ to fix her hair" (homely)
- 21 TX Nolan specialty: "___ hitter"
- 22 Decatur's county dir. to Houston from Dallas
- 24 "Honor the Texas flag" is beginning of state ___
- 30 former Spurs arena
- 34 this Boone starred in TX-filmed "State Fair" (init.)
- 35 TXism: "trapped like ___ possum"
- 36 oil drill bit made a fortune for the TX Hughes ___ Co.
- 37 Evel Knievel might accept this (2 wds.)
- 39 song by TX Henley's "Eagles" (3 wds.)
- 43 with 26-down, TX Rangers play-by-play man
- 44 cross of cattle and buffalo

DOWN

- 1 TX Wrather was producer of this television dog series
- 2 John Steinbeck's TX wife
- 3 TXism: "he could put a loop over ___ mule's back" (good roper)
- 4 Livingston is the seat of this county
- 9 Rockets star when he was Akeem (init.)
- 10 TXism: "a sheep ___ clothes"
- 11 surprise attack
- 12 TX B.J. Thomas sang "___ Lonesome I Could Cry"
- 13 TX Larry L. King was a ___ fellow at Harvard
- 14 "___ Sam" Rayburn
- 15 "___-Down" U.S. House speaker for 17 of these (abbr.)
- 17 Houston Astros early name: The ___-Fives
- 19 TX-developed aircraft V-22s
- 20 TX soldiers in the Civil War?
- 24 Gov. "___" Ferguson

TEXAS CROSSWORD

by Charley & Guy Orbison

Copyright 2021 by Orbison Bros.

45 ___ Campo, TX

46 TXism: "if he ___ giddyup, you better go" (mean)

47 weight watchers

49 tracks off the main track

52 TXism: "got the short ___ of the stick"

53 TX Tanya (init.)

54 this Augustus and Bernardo Gutierrez fought Spain in Texas

31 former popular ISP

32 cow sound

33 "JFK" actor (2 wds.)

38 familiar saying

40 welcome or rasslin'

41 Grand ___ Opry

42 get rid of

48 "___ 'N Go"

50 disagreeably damp

51 TXism: "if he says go, ___" (intimidated)

56 TX-filmed "___ Cowboy" (1980)

57 John of TX-based "Rio Grande" (1950)

BARGAINS OF THE MONTH®

YOUR CHOICE
3.99
Pennzoil®
1 qt. Motor Oil
#254 088, 031, 072, 073 FG

SAVE \$6

14.99
Filtrete™
Ultra Allergen
Furnace Filters
#870 500, 568, 576, 584 FE

4.99
Spectracide®
2 pk. 20 oz. Aerosol
Wasp & Hornet Killer
#224 563 BG

YOUR CHOICE
10.99
GE®
4 pk. LED 6W or
10.5W Relax or Refresh
HD LED Bulbs
#247 667, 668, 248 104, 105 04

SAVE \$6

15.99
Midwest Can
5 gal. Fuel Cans
#248 474, 478, 479 BA

SAVE \$3

12.99
Duracell®
16 pk. AA or AAA Alkaline
Batteries, #137 963, 962
8 pk. C or D or 4 pk. 9V
Batteries, #139 999
#850 005, 033, 074 B12

Consumer responsible for taxes. While supplies last.

Morrison True Value
301 N 5th St
Alpine, Texas 79830
432-837-2061
www.morrisonhardware.com

©2021 True Value Company LLC
Sale ends 8/31/21

Find the right products for your project at your local True Value®.


Last Puzzle Solution

RAFT
CRAW
APIYE
EL
LTV
TOTE
USED CAR
BITPART ORRY SHATTO
STRAIN RRIETZKE CL
OILSPILLS HEIR SHE
MELISSA ESTABIEN
DEKE RIGTH NETS
SEE SAAAGAS
IMTAKEN
MUCHO
THAW
SEW
TK


BROOKS
DUCKNEEDS
TRAIT
SHATTO
SHE
NETS
GAS
KENS

S-1545

PROUD SUPPORTER OF THE ALPINE FIGHTN' BUCKS



BIG BEND CONCRETE CO.



RYAN KINKADE
432-386-3296
P.O. BOX 1934
ALPINE, TX 79831
432-837-7179
BIGBENDCONCRETE@GMAIL.COM

Sports

Growing as a team while fully challenged

BY J.T. MARONEY
Publisher

The Alpine Lady Bucks knew going into last weekend's volleyball tourna-

ment that they would be outgunned to say the least. Alpine and 25 other schools from all around West Texas competed in the 47th Annual Mo-

nahans tournament. The Lady Bucks are a young team this year after losing six starters from last year, but the fight that is in this younger sophomore class and some experience with the older girls helped push the team all weekend.

Starting with pool play on Aug. 13, Alpine first went up against El Paso Chapin, a large 5A school, then they were seeded against Big Spring. The girls fought fiercely in these early battles, coming back from large deficits early on to lose only by 2-4 points per set.

The third game played on Friday was against Caprock 5A from Amarillo.

Coach Rick Garcia said "This school is set to win the entire tournament. They are a real powerhouse."

They went on to beat Alpine, barely scrapping



The Lady Bucks faced off against Big Spring at last weekend's 47th Annual Monahans Tournament.

Avalanche photo by J.T. Maroney

by with a two-shot lead in two sets.

Saturday the Lady Bucks faced off against Crane and Odessa High. It was not the outcome the ladies wanted to see, but they were able to keep their heads above water and not let the losses to the larger 6 and 5A high schools get to them.

Garcia and Coach John Fellows later mentioned that these schools have 1,800-2,000 students, and when a team can pull from that type of student population, it's a different program.

Garcia went on to say he was very proud of these girls, and this was a good exercise to make

them better.

Hitter Amory Aranda went five for 12 in hitting, and Chloe Cordova went eight for 15 in hitting.

The Lady Bucks will travel to Wall today to face off against the Hawks on their way to the San Angelo tournament this weekend.



TRAIL'S END LOGISTICS LLC
Alpine, TX
Specializing in
• SAND • GRAVEL • BENTONITE • CALICHE • DRY GOODS & MORE!
432-837-0123 • 432-244-4490

OLE CRYSTAL BAR
18YR AND UP WELCOMED



COME IN DEN AND CHECK OUT OUR DAILY DRINK SPECIALS AND GIVEAWAYS!

LIVE MUSIC THIS WEEKEND!



Hatchet/Falcon Valley team takes championship

The 2021 Big Bend Ranch Rodeo is now in the record books, and the Aug. 13-14 event was full of excitement, sportsmanship and suspense. The best cowboys from Arizona, Texas, New Mexico, Oklahoma, and Kansas showed off their skills at the Sul Ross State University SALE arena in Alpine. The Hatchet/Falcon Valley team from Arizona



The Hatchet/Falcon Valley from Arizona, were the 2021 Big Bend Ranch Rodeo Champions.

Courtesy photo

finished as the 2021 champions, and won an automatic bid to the Working Ranch Cowboys Association World Championships held in November in Amarillo.

The Hatchet Ranch, from Paradise, Ariz., and Falcon Valley Ranch, from Florence, Ariz., joined forces to compete

in the rodeo. Hatchet Ranch, owned by Ace and Kay Peterson, is a cow/calf operation established in 1905. Falcon Valley, owned by Jennifer Wilson, is also a cow/calf operation established in 1951. Both ranches have stocker operations. Besides Team Captain Ace Peterson, other team members include John Crowder, Whip Peterson, and Will Woodfin.

Hatchet/Falcon Valley scored points in four out of the five events, winning the ranch bronc riding and team branding events, tied for first in the team sorting, and place second

in the wild cow milking event.

The Top Hand Award went to Tyler Straub from the Detwiler/Road Runner team. Winning the Apache Adams Top Horse Award was Rowdy Metallic, an eight-year-old sorrel gelding ridden by Colten Jackson from Smith Cattle Company.

Placing second was the Circle M8/Barnes Cattle team, a cow/calf operation with a stocker program from Silverton, Salado, and Tulia, and Tucumcari, N.M. Placing third was the 2020 Champion Team Smith Cattle Company from Channing, TX, a cow/calf operation with a yearling program and a feed yard.

Results from the other weekend events were, in RHAA competition, Box Drive Class, first place Ashley Weatherford, second place Gracey Taylor; and Wrangler Class, first

See RODEO • 9



ASSEMBLED IN THE USA
FOREIGN & DOMESTIC PARTS

KAWASAKI
Let the good times roll!

TERBYK® KRX™ 1000
YOUR WORLD. YOUR ADVENTURE.

- ▲ POWERFUL, HIGH TORQUE 999cc PARALLEL-TWIN ENGINE
- ▲ HIGH GROUND CLEARANCE AND LONG-TRAVEL SUSPENSION
- ▲ HIGHLY RIGID FRAME WITH INTEGRATED ROLL-OVER PROTECTIVE STRUCTURE (ROPS)

OUT WEST FEED & SUPPLY KAWASAKI
2600 E HIGHWAY 90 • ALPINE, TX
432-837-5792
OUTWESTFEED AND SUPPLY.COM

OUT WEST FEED & SUPPLY
ALPINE, TX



ATHLETE OF THE WEEK



KIARA CASTILLO

Kiara stepped up and answered the call this past weekend to play libero for the Lady Bucks. Kiara is an excellent athlete and a leader on the court.

Brought to you by

WTG Fuels, Inc.
GAS • DIESEL • PROPANE
ALPINE OFFICE:
3001 North Highway 118
432-837-2518

KAWASAKI CARES: Read Owner's Manual and all on-product warnings. Always wear protective gear appropriate for the use of this vehicle. Never operate under the influence of drugs or alcohol. Protect the environment. The Kawasaki MULE™ side x side is an off-highway vehicle only, and is not designed, equipped or manufactured for use on public streets, roads or highways. Obey the laws and regulations that control the use of your vehicle. ©2019 Kawasaki Motors Corp., U.S.A.

Assembled in the U.S.A. badge does not apply to the MULE PRO-MX™ models. Accessorized unit shown.

Despite winter storm, favorable dove hunting season expected

September marks the start of dove season for almost 300,000 Texas hunters per year. After Winter Storm Uri hit the state in February, many hunters were wondering how the snowfall and below-freezing temperatures may have affected dove populations. Texas Parks and Wildlife Department biologists report that hunters can expect a good dove season, especially in the South Zone.

“Our spring dove surveys suggest that there may have been some impacts from the winter storm, particularly in the northern half of the state, but it’s difficult to know the extent since dove populations naturally fluctuate from year to year,” said Owen Fitzsimmons, TPWD Dove Program Leader. “The most evident impact seems to be in the North

Zone, where white-wing estimates are below average overall. I don’t anticipate any long-term impacts. The good rainfall this spring and summer has resulted in good production, which will help offset any losses and allow a quick recovery.”

Fitzsimmons says statewide breeding populations are about average this year, with 25 million mourning doves and 12 million white-winged doves.

One effect of the winter storm that hunters in every zone may notice this fall is frostbite damage on doves they harvest. The frostbite damage, however, doesn’t appear to be impacting the overall health of the birds. Fitzsimmons said it’s not unusual to find doves that migrate in from the northern states with missing toes or even the tips of their

bill. Fitzsimmons notes that Winter Storm Uri did take a toll on Texas birds though, especially white-winged doves.

Habitat conditions have been favorable throughout the state this year thanks to abundant rainfall, which could make for good hunting conditions all season long.

Hunters may notice there are six Special White-winged Dove Days instead of the usual four this year. This is the only regulatory change for the 2021-2022 season.

“Since federal regulations restrict the South Zone Regular Season from opening prior to Sept. 14, the Special White-winged Days provide some early September hunting opportunity, and they continue to grow in popularity every year,” Fitzsimmons

said. “We worked with the U.S. Fish & Wildlife Service this year to bump up from four days to six, which will provide three-day weekend opportunities for our hunters.”

Dove hunters should purchase their new Texas hunting prior to hitting the field this fall. Along with their hunting license, those hunting dove must have the migratory game bird endorsement, and be HIP-certified. It’s also required by law that hunters have proof of their completion of a hunter education course.

Dove season dates for the North, Central and

South Zones, along with regulations, bag limits and more can be found in the Outdoor Annual. Additionally, hunters are encouraged to report any birds they recover that have leg bands.

Anyone hunting on

Texas Public Hunting Lands are also required to purchase an Annual Public Hunting Permit. More information about these lands and locations can be found on the TPWD Public Hunting website.

Dan Platt, Jr.

**Home
Auto
Commercial**



LIVINGSTON
INSURANCE AGENCY

**Serving
West
Texas**

903 W. San Antonio • Marfa
432.729.4306 • 281.785.5847
Dan@marfainsurance.com | marfainsurance.com

This year’s Runnin’ Bucks



The 2021 Alpine High School cross country team recently stopped for a photo break. In the photo, back row, Elizabeth Uranga, Lauren Penders, Honora Hillery, Lisa Valenzuela, Vanessa Rice, Hatfield Cason, Aaron Miller, Marco Martinez, and Martin Sablatura; and in the front row, Kylie Garcia, Alexa Renteria, Hope Dominguez, Angelique Fox, Tannin Ritchie, Landon Velasco, Javy Prieto, and Solanus Prieto.

Courtesy photo

RODEO • FROM 8

place Brooks Jobe, second place Brooks Jobe, third place Rylie Cravens, fourth place Taylor Blackwell, fifth place Coy Grace, sixth place Gerry Gesell, and seventh place Mason Overstreet.

In the Ranch Hand Class was first place Maegan Teykl, and second place Mary King.

In the Cowboy Class, Ty Ferguson finished first, Levi Jones second, Tyler Dunn third, and Tony Martinez fourth.

In the Junior Class, first place went to Clint Jones, second to Will Lorenz, third place to Gerry Gesell, and fourth place to Elizabeth Yeary. In the Senior Class will Lorenz finished first, and Elizabeth Yeary placed second.

In the Youth Working Cowhorse Competition, Junior Class (12 and under), Aiden Mellard finished first, Jacob Mellard was second, and Travis Mellard third. In the Senior Class (13 and over), first place went to Rance Peebles, second to Brooks Meyers, and third to Mason Mare.

The winner of each class in the youth competitions won an automatic bid to the championships in Amarillo in November.

It’s tag ordering time

It is time once again to order sheep and goat state validation tags for the spring major stock shows. These tags are only for the major shows. Those showing only at the Brewster County show in Alpine will not need one of these tags. Those unsure about showing at any major shows should visit with their 4-H or FFA sponsor, or go ahead and purchase the tags. This is a one-time purchase.

Tags should be purchased by Aug. 25. Tag cost is \$15 per tag. After Aug. 25 there is a late fee of \$25 per tag.

State Fair lambs and goats must also be re-validated, with new tags ordered for these animals.

Anyone showing breeding sheep or does, either registered or commercial, will also need tags for these animals. These are different tags, and need to be designated when ordering.

Get a perfectly-built deal on more perfectly cut lawns.



Z700 Speed up to 11.2 MPH 48" to 60" cutting widths

Kubota

Together we do more.®

Save more on the comfortable, high-performance Z700, featuring professional grade Kohler Command, Kawasaki FX and FX EFI engines. Stop in for a demo today.

\$0 DOWN 0% APR 60 MONTHS

OR

SAVE \$500

VISIT US TODAY FOR THIS LIMITED-TIME OFFER

OUT WEST
FEED & SUPPLY

ALPINE, TX

2600 E HIGHWAY 90
ALPINE, TX
432-837-5792
OUTWESTKUBOTA.COM

KubotaUSA.com
© Kubota Tractor Corporation, 2021. \$0 Down, 0% A.P.R. financing for up to 60 months or customer instant rebates of \$500 are available on purchases of select new Kubota Z700 Series equipment from participating dealers' in-stock inventory. Promotional rate available to qualified purchasers through Kubota Credit Corporation, U.S.A.; subject to credit approval. Example: 60 monthly payments of \$16.67 per \$1,000 financed. \$500 rebate is not available with 0% A.P.R. or other promotional financing. Some exceptions apply. Offers expire 9/30/21. Terms subject to change. This material is for descriptive purposes only. Kubota disclaims all representations and warranties, express or implied, or any liability from the use of this material. For complete warranty, disclaimer, safety, incentive offer and product information, consult your Dealer or KubotaUSA.com. KBB21-04-145361-17

ARE YOU ADVERTISING?

To grow your business, you must increase

YOUR VISIBILITY.

to advertise, call us at 432.837.3334

Alpine Avalanche

Alpine Diesel Services



ALPINE DIESEL SERVICES LLC

- Routine Maintenance
- Scheduled Service & Repair
- Trailer Repair
- Truck Wash & Detail

90530 E. HWY 90
(432) 244-4490

Emergency
Roadside Service
(218) 391-4337

Mechanic Positions Available.



2004 East Highway 90 | Alpine, Tx.
432-837-9597
www.holidayinnexpress.com



Live streaming
Sunday 10 a.m. • Wednesday 6:30 p.m.
801 East Brown graceinalpine@gmail.com
Pastor Adam Brant • 432-837-9117
Facebook.com/gcfalpine



ALPINE SMALL ANIMAL AND
LARGE ANIMAL SERVICES
Mary Dodson, D.V.M. | Zach Dodson, D.V.M.
3201 N. Hwy. 118, Box 7 • Alpine TX 79830
432-837-5416

**ADVERTISE
HERE!**
Call
432-837-3334

**BIG BEND
BIBLE
FELLOWSHIP**
Sunday Evenings
6:00-7:00 PM
Moss Creek Chapel
46043 State Hwy 118
Alpine, Texas
Phone:
432-244-8859

BAM Automotive
1200 Hwy 118 South. • Alpine, TX 79830
432-837-0890 – Fax 432-837-0826
M-F 8am-5pm Closed for Lunch
Full Service Automotive Repair
Exhaust Installation
Lube & Oil Changes • Welding Repair

PhyTex 1901 W. Highway 90
Alpine, Texas 79830
Rehabilitation & Sports Medicine Associates
Outpatient Physical Therapy
Sports Medicine & Athletic Training Services
432-837-5918

**ADVERTISE
HERE!**
Call
432-837-3334

CARPENTER REALTY
708 E. Ave. E, Alpine, TX 79830
P.O. Box 25, Alpine, TX 79831
Office: 432-837-3325
Fax: 432-837-3326 • Res: 432-837-3761
Cell: 432-386-6773
www.jwCarpenter.com
John W. Carpenter,
Owner/Broker

**ADVERTISE
HERE!**
Call
432-837-3334

WTG Fuels
GASCARD
Your Full Service Propane, Gasoline & Diesel
Distributor for Brewster, Jeff Davis &
Presidio Counties of West Texas
ALPINE OFFICE: 3001 N. Hwy 118
Alpine Texas • 432-837-2518
MARATHON OFFICE: 300A S. US HWY 385
Marathon, TX • 432-386-4422

**FORT DAVIS
STATE BANK**
YOUR "PEOPLE TO PEOPLE" BANK
SINCE 1911
FORT DAVIS (432) 426-3211 • ALPINE (432) 837-1888
PRESIDIO (432) 229-5000
Member FDIC

**ADVERTISE
HERE!**
Call
432-837-3334

Devotional Page

Clinging to God

BY CONNOR TRAVIS
Young Life Ministries

What if this life does not change? This question lingered in the back of my mind recently as I drove around my hometown, noticing how many old familiar places had been torn down or replaced with something new and strange to me. Maybe you can relate.

Over time, buildings around you get razed and eventually torn down, old faces go and new faces come, and some days we look in the mirror and don't even recognize ourselves.

Life is ever changing. Like a current, life seems to always move forward, whether we want it to or not, and we find ourselves trying to cling to something - or anything - for dear life. So how can we find our identity in a world that is always changing? Is there anything sturdy enough to cling to on this crazy life? The Psalmist who wrote Psalm 102 set out to answer these very questions.

Psalm 102 has a unique title. It is often called "A prayer of an afflicted person who has grown weak and pours out a lament before the Lord."

The Psalmist here is clearly in distress. He describes the transience of his life, comparing it to smoke and withered grass (vv. 3-4). His body aches from suffering to the point where he forgets to eat (vv. 3-5). Additionally, he is cut off from any sense of community. He compares himself to a desert owl, or a bird alone on a roof (vv. 6-7). These images illustrate

his sense of social isolation, maybe the same isolation you feel when the world is passing you by. Further, he recognizes that his suffering is not his alone, but also a shared suffering of God's people (vv. 12-16).

This psalm was likely written during the Babylonian exile, when many in Israel felt abandoned by God. If that is the case, everything around the Psalmist changed as he was taken from his homeland and navigating life in a new territory.

Yet reflecting on God's attributes, the Psalmist finally finds solace. He reminds himself that God is on the throne (v. 12), not the Babylonian king. No matter how desperate his personal situation might be, God never changes, "but you remain the same and your years will never end" (v. 27).

It is good news that God never gives up on His people. The world changes, but His character and purpose remain the same. Just as He promised to forgive and restore Jerusalem (vv. 21-22) during the Babylonian exile, so too does He want to forgive and restore you.

Do you feel isolated or alone? If so, you can take comfort in the knowing that our unwavering God cares enough for you to send His Son to die for your sins. Consider clinging to this God who will never change and is faithful to keep His promises in the midst of life's challenges and changes. I'll leave you with a word from Hebrews 13:8; "Jesus Christ is the same yesterday and today and forever." Amen.

This Devotional and Directory are sponsored by these businesses who encourage us to attend worship services.

- ANGLICAN**
ANGLICAN CHURCH IN N. AMERICA
HOLY CROSS ANGLICAN
903 Fighting Buck Ave., 837-7170
www.holycrossalpine.org
Rev. Wyatt Boutwell
- APOSTOLIC**
CALVARY APOSTOLIC
South Hwy. 118, 837-1720
Javier Trevino, Minister
- ASSEMBLY OF GOD**
1802 Fort Davis Hwy., 837-2264
Pastor Clark Nussbaum
- FIRST HISPANIC ASSEMBLY OF GOD**
South 11th & Avenue I
Pastor Saul Ordonez
- BAHA'I**
BAHA'I FAITH
1202 N. 5th St., 432-538-7002
- FIRST BAPTIST**
4th & Sul Ross, 837-2487
- HILLSIDE BAPTIST**
East Hwy. 90, 837-5205
Pastor Brad McGuire
- BIG BEND CHURCH**
Hwy 118 @ Bee Mountain, Terlingua
SS @ 10:00
Worship @ 11:00
Pastor Brent New
(361) 220-8300
- CATHOLIC**
OUR LADY OF PEACE
5th Street & Gallego Ave., 837-3304
Fr. Pablo Matta, Rev. Joe Raj,
- CHURCH OF CHRIST**
CHURCH OF CHRIST
2nd & Sul Ross Ave., 830-515-0591
10:45 a.m. Sundays
Wednesday Evening Service 5:15 p.m.
Curtis Wubbena, Minister
AlpinechurchTX.org
- MARFA CHURCH OF CHRIST**
North Austin Street
Marfa, TX 79843
Sunday 10:30 a.m.
MarfaChurchofChrist@gmail.com
- DISCIPLES OF CHRIST**
FIRST CHRISTIAN DISCIPLES OF CHRIST
6th & Sul Ross Ave., 837-2275
Pastor Lana Covington
- Send updates to:
editor@alpineavalanche.com
- EPISCOPAL**
ST. JAMES' EPISCOPAL, ALPINE
Ave A & N. 6th St., (432) 837-4133
Santa Inez, Terlingua; Chapel of St. Mary
& St. Joseph, Lajitas
www.bigbendepiscopalmission.org
- JEHOVAH'S WITNESS**
JEHOVAH'S WITNESS KINGDOM HALL
1508 N. 5th St., 837-5115
- LUTHERAN**
REDEEMER LUTHERAN
15th & Holland, 837-5428
Pastor Mike Fickschler
- METHODIST**
FIRST UNITED METHODIST
208 E. Sul Ross Ave., 837-2286, 2280
Pastor Young Hoon Kang
- MORMON**
CHURCH OF JESUS CHRIST
OF LATTER-DAY SAINTS
Sunny Glen Road, 837-3779
- ORTHODOX CHRISTIAN**
ST. JONAH ORTHODOX CHURCH
405 E. Gallego, 608-628-6910
V. Rev. Frederick Joseph Janeczek
www.stjonahalpine.org/janeczekwi@sbcglobal.net
- PRESBYTERIAN**
FIRST PRESBYTERIAN
5th Street & Lockhart Ave., 837-2449
Pastor Jobeth McLeod
- UNITARIAN UNIVERSALIST**
UNITARIAN UNIVERSALIST OF THE BIG BEND
1308 N. 5th St
www.uubigbend.org
- OTHER**
BIG BEND COWBOY CHURCH
E. U.S. Highway 90, 254-631-8582, 432-364-2822
Wendel Elliott, Pastor
bigbendcowboychurch.com
- GRACE CHRISTIAN FELLOWSHIP
801 E. Brown, 386-6203
Mark & Shirley Williams, ministers
www.facebook.com/gcfalpine/
- ST. LUKE'S MISSIONARY EPISCOPAL
Welcomes you.
Holy Communion 11 am Sunday
1102 North 5th Street, Alpine, 837-1653
Father Henry- Pastor
- ZEN MEDITATION**
Morning Glory Sangha
Rev. Jean O'Cullin, Minister, 364-2462
Laura Belkin, 729-3063
6 p.m. Monday Nights
Unitarian Universalist Church 1308 N.5th St.



2607 West US Hwy. 90 • Alpine, Texas
432-837-7344

BEHIND EVERY PROJECT IS A
True Value
MORRISON HARDWARE
SERVING ALPINE & THE BIG BEND SINCE 1928
301 N. 5th St
432-837-2061
ALPINE, TEXAS 79830
www.morrisonhardware.com

Melissa Gonzales
Restaurant General Manager
Pizza Hut
2301 E. Hwy. 90
Alpine, TX 79830
432-837-5819
7 DAYS A WEEK STARTING AT 11AM

**PORTER'S
THRIFTWAY**
Services Provided:
• Wire Transfers • Money Orders
• Phone Cards • ATM
WESTERN UNION

SKINNER'S LLC
DRILLING & WELL SERVICE
Water Well Drilling & Complete Well Service
432-837-2497
Serving you since 1978!
Walter Skinner Master License 2838 AI

SONIC
America's Drive-In.
Sonic Fountain Drinks
32oz. Drinks 99¢
7-10am Mon.-Sun.
1/2 Price Happy Hour!
2-4 pm Every

**ADVERTISE
HERE!**
Call
432-837-3334

**KC's QuickMart
& RV Park**
• 30/50 Amp Pull Thrus
• Tent Sites
• Restrooms, Laundry
• Walking Distance to:
Pizza Hut
Penny's Diner
• All Aboard America Bus Stop
2303 E. Hwy 90 - Alpine
432-837-5497

**ADVERTISE
HERE!**
Call
432-837-3334

Big Bend Cowboy Church
90410 East US Hwy 90
Ph: 432-364-2822
Sunday Service
10:30am Coffee
11:00am Cowboy Church
www.bigbendcowboychurch.com

**ADVERTISE
HERE!**
Call
432-837-3334

**First United
Methodist
Church**
208 East Sul Ross Avenue
Alpine, TX 79830-4722
(432) 837-2286

**ADVERTISE
HERE!**
Call
432-837-3334

**First Baptist Church
of Alpine**
Bible Study
9:45am
Worship
10:55am & 6pm
office@fbc Alpine.com
203 N. 4th St. • Alpine TX 79830 • (432) 837-2487

**Holy Cross
Anglican Church**
Holy Communion Sunday 10:30am
Wed. Evening 6:00pm
Wed. Evening Bible Study 6:30pm
Pastor Wyatt Boutwell



McDonald's
i'm lovin' it
900 E. Avenue E
Alpine Texas

READY TO GET THE DAY STARTED

Come try the
McCafé Bakery, Coffee, Espresso Drinks

He's the top hand



Tyler Straub from De-twiler/Road Runner Ranch won top hand at last weekend's Big Bend Ranch Rodeo.

Courtesy photo

A quick fix for that summer sweet tooth



Cottage cheese jello salad.

Do you ever get that craving for something sweet, but cake, pie, or cookies just won't cut it? I find myself wanting something sweet from time to time, but nothing as heavy, so I fall back on a family favorite - cottage cheese jello salad.

I do not recall my mom ever calling this anything but jello salad, but regardless of an official title, it satisfies. Not only is it a refreshing dish that does not sit heavy in the summer heat, but it is also exceptionally easy to make. All you need are four ingredients, and you have a dessert for lunch, dinner, or even a barbecue. This easy dessert is also great for potlucks or church functions.

Being the type to experiment with recipes in the kitchen, I decided to deviate from the way my mom has always



HEAD OVER MEALS
by kara gerbert

made this. Instead of using her traditional lime jello, I opted for pistachio pudding mix. It worked great! This also gave me ideas for future flavors to try out, because let's face it, who wants to be restricted to one option?

In doing my research to determine if this salad had an official name, I noticed that cooks seemingly only used strawberry and lime flavors, but I'm obviously not one to color between the lines when it comes to cooking.

To make this mildly sweet, fluffy salad you will need the following ingredients:

- 1 can of crushed pineapple (drained)
- 1 10 oz. tub of Cool Whip
- 1 pint of cottage cheese
- 1 package of jello (lime is common)

In a medium bowl, combine all ingredients and mix well. Cover with a lid or plastic wrap, and refrigerate for around an hour. Serve.

It really is that simple. Besides being quick and easy to make, there is also no heating up the house by turning on the stove or oven. The pineapple gives this salad its tangy flavor on top of jello mixture if you use the lime. That tanginess is less pronounced if you use pistachio as I did, and with other jello flavors it is sure to change slightly. The lightness of the dessert does not change, due to the use of Cool Whip, and the cottage cheese adds additional texture.

Overall, the combination of these ingredients makes for a great solution to that summer sweet craving.

Questions, comments, or suggestions? Contact Kara at foodie9372@gmail.com.

BIG BEND TITLE, LLC

Serving the Greater Big Bend Area

PROTECTING YOUR LARGEST SINGLE INVESTMENT!

YOU HAVE THE POWER OF CHOICE IN CHOOSING YOUR OWN TITLE COMPANY.

Now serving Brewster, Jeff Davis and Presidio Counties

Alpine Office:
608 E. Holland Ave.
Alpine, TX 79830
(432) 837-9172
jdca@sbcglobal.net

Fort Davis Office:
309 State St. - Hwy. 17 S
P.O. Box 813
Fort Davis, TX 79734
(432) 426-3288

Marfa Office:
212 Highland Ave.
Marfa, TX 79843
(432) 729-4299

WEST TEXAS EYECARE

Dr. Hulon Pass - Optometrist
Dr. Joshua Pass - Optometrist
Dr. Brian Cherry - Optometrist



605 N. Main P.O. Box 1568
Ft. Stockton, TX 79735
432-336-3662 • 432-336-6711
Mon - Fri 8:30 am-5:30 pm



8037 Lockheed Ste. 100
El Paso, TX 79925
915-533-0998
Toll Free 1-800-333-7082
www.riocog.org

The Rio Grande Area Agency on Aging can be your source for support to older adults and family caregivers

The agency is available to provide the following services:

Information, Referral and Assistance on available community resources

Case Management

Benefits Counseling

Family Caregiver Education, Training & Support

Evidence-Based Health & Wellness Classes

Long-Term Care Ombudsman Services

We can also temporarily assist with purchasing services from local Vendors that help support the needs of older adults

Let us help connect you to resources that promote older adult independence and assist family caregivers in their tasks of caring for their loved ones

Contact us at

Rural office
Marfa, TX at 432-729-4312

Main office
El Paso, TX at 915-533-0998

Our business operations have temporarily changed. Currently, we are not open to the public for in-office appointments, however we are available to assist you by phone.

The Rio Grande Area Agency on Aging serves persons 60 years of age and older and their families that reside in El Paso, Hudspeth, Culberson, Jeff Davis, Brewster and Presidio Counties.

It is funded by the Older Americans Act through the Texas Health and Human Services Commission

WEST TEXAS ROUNDUP

ABSTRACT AND TITLE



ELLYSON ABSTRACT
BREWSTER
PRESIDIO
JEFF DAVIS
410 N. 5th

410 N. Fifth Street
P.O. Box 418
Alpine, Texas 79830
Office 432-837-5801
Fax 432-837-3509

Kristin@ellysonabstract.com • www.ellysonabstract.com

BOOKS

RE-READS
USED BOOKSTORE

INSIDE THE ALPINE PUBLIC LIBRARY AT
805 W. AVENUE E.
Shop ReReads online at
AlpinePublicLibrary.org

EQUIPMENT RENTAL

432-837-5533 www.inoutrental.com

IN & OUT RENTAL INC.
Equipment Rental
Delivery Available

STIHL
WILDE YETI COOLERS

604 W. Holland Ave., Alpine, Tx 79830

ATTORNEY

Stephanie Lee Milliron
Attorney

(432) 652-2750
stephanie@millironlawpllc.com

107 N. 6th Street,
Alpine, Texas 79830

BODY SHOP

Since 1959

REMIE'S BODY SHOP, INC.
Complete Auto Repair & Glass
Insurance Claims
Grille Guards, Hail Repair • Paintless or Conventional

CALL FOR ESTIMATES • PICK-UP & DELIVERY AVAILABLE
800 EAST 6TH • FORT STOCKTON 79735 • 432-336-5181 • 432-336-6931 FAX
RAMIRO RAMOS & RAMSEY RAMOS

FURNITURE



MITCHELLS
Furniture & Flooring

Family owned for 30 years.


509 W. Holland Ave. Alpine Tx.
mitchellsfurniture@gmail.com
432-837-0070

AUTO



ASIS TIRE Co.

Most Major Brands of Tires
Complete Muffler & Tailpipe Repair • Brakes • Shocks
Struts • Front End Alignments
24 Hr. Emergency Service
2601 E. Hwy 90, Alpine • 432-837-5030



BEST BODY SHOP
Alpine, Texas

506 W. Holland Ave. • Alpine • 432-837-7275
Towing Available • Estimates
Insurance Work Accepted
CALL FOR AN APPOINTMENT

Family Owned & Operated
DWAYNE AND JASON MURRELL
Served Alpine Since 1995 • Over 30 Years Experience

AUTO

XPEL Paint Protection Film
Window Tinting • Auto Storage
Auto Detailing • Ceramic Coating

Call for Appointment
432-837-9789
511 W. Holland • Alpine

THE STABLE
PERFORMANCE CARS

CLOCK REPAIR



DML Clocks
2003 Fort Davis Hwy.
Alpine, Tx 79830 • 432-837-5330 • 386-6777

- Expert Clock Repair, All Types
- Pocket Watch Repair & Cleaning
- Watch Batteries Installed
- Free Pick Up & Delivery In our Area
- Estimate Before Repairs, Insured

Call Today and Get Your Timepiece Repaired

HOME HEALTH

Your only locally owned and operated
Home Health Care Agency since 2011

AGAVE HOME HEALTH

Serving the communities of
Alpine, Fort Davis, Marathon, Marfa,
Presidio, Redford & Shafter.

Our skilled services are customized to each individual's health care needs.
We offer the following services in the privacy of your own home.

432-837-5907
www.agavehomehealth.com

Skilled Nursing Physical Therapy Occupational Therapy Speech Therapy

BAIL BONDS

Freedom Bail Bonds

432-837-3293

24 Hour Service • Major Credit Cards Accepted

CONSTRUCTION



Home Rejuvenation
Paint, Stain, Roof Coating & General Construction

Rick Dobbs 915.873.5446

HOTELS

Hampton Inn by HILTON

2271 West Interstate 10
Fort Stockton, TX 79735
(432) 336-9600
www.fortstockton.hamptoninn.com

BW Best Western PLUS

2115 Interstate 10 W.
Fort Stockton, TX 79734
432-336-7000
800-780-7234
www.bestwestern.com

BANKING

Lobby & Drive-Up Services Available!

Proudly Serving Our Community

ALPINE BRANCH
101 East Avenue E | Alpine, TX 79830
432.837.3375

WTNB
MEMBER FDIC EQUAL HOUSING LENDER NMLS 410435 | 877.493.7862 | WTNB.com

DRUG STORE

City Drug Store

- Pharmacy • Herbs • Cosmetics
- Over the Counter Medications
- Mail Service
- We accept most insurance plans
- Free Local Medication Delivery

HealthMart. We welcome all Presidio Pharmacy patients... ask us about free delivery details

202 E. Ave A • Alpine, TX
(432) 837-2252
9am-6pm M-F • 9am-1pm Sat.

INSURANCE

Globe Life Family Heritage Division

Michael Lujan
Phone: (432) 940-5279
Email: MLujan.globelife@gmail.com
Customer Care: 440.922.5222

Helping to provide cash when you're sick or injured.
Ask us about our Return of Premium benefit!



TRANSPICOS BANKS
Texas Banking at its Best
(432) 837-0094

102 W. Ave. E • P.O. Box 9600 • Alpine, TX 79830
109 W. Hwy. 90 • Marathon, TX • (432) 386-4500
115 W. 3rd • Pecos, TX 79772 • (432) 445-9000

Member FDIC

HIGHLAND DRUG

Jill Jahn PharmD
Owner/Pharmacist in charge

Monday-Friday
8 am-6 pm
Saturday 9 am-Noon

504 East Avenue E | Alpine, TX 79830
(432)837-3931

CARPETS TILE/HARDWOOD
REMODELING SHUTTERS
FREE ESTIMATES

DESIGNER CARPETS & INTERIOR
(432) 336-6591

700 N. NELSON ST
FORT STOCKTON, TX.79735
Lujanmh@yahoo.com

TO ADVERTISE YOUR BUSINESS CALL 432-837-3334
OR EMAIL PUBLISHER@ALPINEAVALANCHE.COM

Border Patrol agents attacked

In recent weeks, suspects have used firearms to shoot at several U.S. Border Patrol agents in Texas and California. In each case, agents found cover without harm to themselves or others.

“U.S. Border Patrol agents continue their unwavering commitment to provide border and national security to the American public despite recent attacks against them along our Southwest border. We take these threats and acts of violence seriously

and will do everything we can to identify and bring those to justice who have sought to harm the men and women of the Border Patrol,” said U.S. Border Patrol Chief Raul Ortiz.

These attacks are a reminder that criminals will stop at nothing to further their illegal activities. Agents too often face life-threatening confrontations as they secure America’s borders. In many cases, agents find themselves in remote locations where they are

significantly outnumbered and do not have immediate backup. U.S. Border Patrol has protocols in place to protect the safety of agents and the public while conducting operations to enforce the nation’s laws.

Threats and assaults against CBP personnel are taken very seriously. U.S. Border Patrol is collaborating with U.S. federal and Mexican law enforcement authorities regarding these recent incidents, which are being investigated. Viola-

tors will be prosecuted to the fullest extent of the law.

Transnational criminal organizations are a threat to national security and to public safety. They are heavily involved in smuggling people, including terrorists, criminals, and trafficking victims, as well as weapons, cash, and drugs through sophisticated criminal networks. They conduct their operations without regard for human life – money and power are their only motivation.

At the rodeo



The Circle M8/Barnes Cattle team finished second overall at last weekend’s Big Bend Ranch Rodeo at the SALE arena in Alpine.

Courtesy photo

SENIOR SPOTLIGHT Dominique Mucharraz

Who was your most influential teacher or coach through high school?

My pre-AP English teacher Adams, he always pushed me to be the best version of myself, and always kept my head up.

What was your favorite moment the last four years?

Finally winning a District championship trophy for the Alpine Lady Bucks basketball while everyone doubted us.

What are your plans after high school?

Become a certified accountant.



Dominique Mucharraz
Alpine High School

The Senior Spotlight is graciously sponsored by

We are very proud to support today's Youth!

BREWSTER COUNTY PROPOSED 2022 BUDGET

A Public Hearing on the Proposed 2022 Budget will be held on Monday, August 30, 2021, at 9:30 A.M. in the Brewster County Courthouse, Commissioners Courtroom, 201 W Ave E Alpine, Texas. (Public Hearing Dates may be subject to change).

This budget will raise more total property taxes than last year’s budget by \$598,135 (17.13%), and of that amount, \$98,656 is tax revenue to be raised from new property added to the tax roll this year.

WEST TEXAS ROUNDUP

MUSIC

REAL ESTATE

Specializing in Ranch & Rural Properties in the Big Bend & Highlands of West Texas
(888)729-4424 • (432)249-0401
P.O. Box 726, Marfa, TX 79843
Cleat L. Stephens, Broker
cleat@findaranch.com
FindARanchOutWest.com

SEPTIC SERVICES

DO NOT WAIT until your septic system shows signs of failure to have your septic tank pumped out!

Waiting can mean complete clogging and an expensive septic system repair bill. Periodic septic tank pumping is far less costly than septic tank repair or replacing the entire septic tank system.

We recommend septic system cleaning every 2-5 years.

Remember: Maintenance is much cheaper than replacement!

(432) 294-0758

B & S SERVICES is the BEST in Portable Sanitation
We have Special event rentals, monthly construction rentals, handicapped rentals and wash stations. We also service holding tanks.
bstoilets@hotmail.com

PAINTING

432-294-4981
or **432-294-4987**

SPA

432-837-4101 | Cell: 432-294-0351
201 E. Holland | Alpine
Angie Portillo
HAIR STYLIST

PROPANE

WTG Fuels, Inc.
GAS | DIESEL | PROPANE
ALPINE | 432.837.2518 | MARATHON
432-386.4422

SOLAR

GO SOLAR AND GET PAID FOR MAKING CLEAN ENERGY!

SWITCH TODAY WITH \$0 OUT OF POCKET EXPENSE AND BEGIN SAVING.
ENJOY THE 26% GOVERNMENT TAX INCENTIVE.

Face-to-Face visits or video conference calls.
432-448-1166

PREMIER SOLAR SYSTEMS
Retired Veteran Owned and Operated
BBB Accredited Business
NOW HIRING SOLAR SALES REPRESENTATIVES.

TAX SERVICES

D & A Tax Service
506 N. Nelson St. • Fort Stockton Texas, 79735
(432) 290-8103

Monday—Friday 9:00 A.M.—6:00 P.M.
Saturday 9:00 A.M-1:00 P.M.
Appointments Available

Delma Rodriguez
Se Habla Espanol

REAL ESTATE

Barbara Trammell, Broker Listings Wanted
432-371-2430 - P.O. Box 356 Terlingua, TX 79852

BIG BEND REALTY

TERLINGUA RANCH * TERLINGUA GHOSTTOWN
STUDY BUTTE * SOUTH COUNTY AREA
UNDEVELOPED RECREATIONAL * HOMESITE
RESIDENTIAL * COMMERCIAL

FOR ALL YOUR NEEDS - LET'S TALK!

NOTICED US?

SO WILL YOUR NEW CLIENTS!
RESERVE YOUR SPACE TODAY!
Call JT At the Avalance
432-837-3334



WELL SERVICE

SKINNER'S DRILLING & WELL SERVICE, LLC
Serving You Since 1978

WALTER SKINNER 432-837-2497
TDLR Master Lic. #2838 AI

John Skinner Thomas Skinner
Lic. #59655 KLPW Lic. #59401 LPW

2300 W. Mosley Loop, Alpine, TX
www.skinnerdrillingbigbend.com

Avalanche Classifieds

ERRORS - Please check your ad the first day of publication. We are only responsible for the first incorrect insertion of any ad. Publisher's liability for damages resulting from errors in any advertising that it has agreed to publish shall be limited to the amount actually received by the publisher in consideration for its agreement to publish the advertisement in ques-

ALL MAJOR CREDIT CARDS ACCEPTED



PAYMENTS: MUST BE MADE IN ADVANCE • CASH • CHECK • CREDIT

tion. It shall not be responsible for any consequential damages suffered by any party.

DEADLINES - All ads are due in the office by 12:00 (noon) on Tuesday.

\$10
FOR 20 WORDS
30¢ FOR EACH ADDITIONAL WORD

Call 432-837-3334.

CANCELLATIONS - All ads

HOURS - You may place your ad in person at 118 N. 5th St., Alpine, TX 79831 from 8 a.m. to 5 p.m.

may be cancelled for the next publication until 12:00 (noon) on the Monday before publication.

ACCEPTANCE - The publisher wants to do everything that is possible within the confines of good taste and legal constraints to help you advertise your product or service to the best advantage. We reserve the right to edit or reject any copy or insertion

that does not meet our standards of acceptance. The Alpine Avalanche does not run ads for anyone whose balance on previous ads is not current.

PAYMENT - All Classified Ads must be paid in advance.

EMAIL - Send your Classified Ads to the Alpine Avalanche by email at bookkeeping@alpineavalanche.com.

REAL ESTATE/ FOR SALE:
604 n. 6TH St. East, Marathon. 1/2 a city block in Marathon. Call 325-668-1390

MOBILE HOMES FOR RENT
For rent - We have spaces for trailers. Country Quiet, City Close, TWIN PEAKS PARK CALL 432-386-3965 for more details.

Mobile homes and spaces. Close to Sul Ross University. Frontier Mobile Home Village. 907 N. 10th St. Alpine. Call 432-837-

Two-bedroom one bath, totally remodeled, mobile home. \$600/ mo plus utilities, deposit required. No pets and references required. HUD ok. Call 432-362-5254 leave message.

COMMERCIAL SPACE:
OFFICE SPACE FOR LEASE: Large secure office space for lease in downtown Alpine at 121 N. 6th St. across from the Brewster County Courthouse. Available July. Please call 432-364-0500 or 432-294-1480 or email np@bigbend.net for an appointment to view or with any questions.

LOTS FOR SALE:
Very nice 8.62 acre, approx. 1,000 ft. deep, Sunny Glen lot with cliffs at back. \$125,000 firm. Contact Bob 432-294-4307 or trekker4@aol.com

FOR RENT/ LEASE
FORT DAVIS HOUSE FOR RENT, \$1600 per month. 432-249-0030.

204 N Garnett 2 BR / 1 Bath Laundry Room Rent \$725.00 Deposit \$725.00 432-249-0293

FOR RENT/ LEASE
Rentals Available. Call Rhonda Cole 432-837-5539

Please check clarknussbaum-realty.com for available rentals.

103 Baeza Circle (Ft Davis), 2 BR/1Bath, Rent \$800.00/mo + Deposit, 432-249-0293

208 Dolores Mt. Trail (Ft Davis), 4 BR/ 2 Bath, Beautiful House on Side of Mountain, Rent \$1600.00/ mo + Deposit, 432-249-0293

407 E. Lockhart Hse#2, 3 BR / 1 Bath, Rent \$900.00/mo + Deposit, 432-249-0293

HELP WANTED
Cobblestone Cleaning Company is now hiring Custodial, Specialist and Maintenance positions. Starting pay \$12.50/hr. for Custodial and \$13.50/hr. for Specialist. Call 432-294-0184

HELP WANTED
Alpine Diesel Service is now hiring multi-person to assist with demolition and construction in Alpine, flexible hours, basic knowledge of power tools, pay negotiated on experience. Call 432-244-4490.

Start to Finish Alpine/Fort Davis Construction needs help. Experience helpful but not necessary if willing to work. Call Jimmy 325-340-0175.

Maintenance and yard position and yard position available for apartment complex in Alpine. Call 837-2273

HELP WANTED
Help wanted, Alpine Texas Private Pay, Direct-Care Caregiver needed in private home in Alpine Texas. - Nice local family is looking for a caregiver to join the team to help care for Mother. Light meal preparation, social engagement, assistance, and errands will be required. - Schedule will be determined with caregiving team and right candidate. - Right candidate will have experience and a sincere interest.

WANT TO BUY:
I buy cast iron skillets please text or call 512-963-7533

Find it! in the CLASSIFIEDS!

NOW ACCEPTING APPLICATIONS!

ALPINE MANOR APARTMENTS

1001 N. Fighting Buck
432-837-1414
TDD: 1-800-735-2989

Elderly (62 years of age)
Handicapped/Disabled of any age

- One bedroom apartments
- Washer/Dryer hookups
- We accept Section 8 vouchers/certificates

Some rental assistance available

APPLY TODAY

This institution is an equal opportunity provider and employer.

All real estate advertised herein is subject to the Federal Fair Housing Act, which makes it illegal to advertise any preference, limitation, or discrimination because of race, color, religion, sex, handicap, familial status, or national origin, or intention to make any such preference, limitation, or discrimination.

We will not knowingly accept any advertising for real estate which is in violation of the law. All persons are hereby informed that all dwellings advertised are available on an equal opportunity basis.



real estate auction

Schlumberger Surplus Land Sells Without Reserve

ALPINE, TX • 51082 State Highway 118
Four parcels, non-contiguous, contain a total of 382+/- acres. Brewster County Property ID's: 13440, 30170, 30286.

Lat/Longs:
Northern Parcel - 30.381553, -103.554503
Central Parcel - 29.678266, -103.590799
Western Parcels - 29.654611, -103.686105

Bid Online Only Sept 27 - 29 at auctionnetwork.com

WILLIAMS & WILLIAMS worldwide real estate auction

LEE & ASSOCIATES COMMERCIAL REAL ESTATE SERVICES

Prefer Not to Wait for the Auction? Submit a Pre-Auction Offer!

800.801.8003 • williamsauction.com/TX

TX JEFFREY MICHAEL ASHBY RE LIC 550021. BUYER'S PREMIUM MAY APPLY.

Have a Garage Sale in your Future?



Get the Word Out!

Get Classified!

Call for details!

432-837-3334

ALPINE AVALANCHE

TRANSPICOS BANKS

TransPecos Banks continues to grow and needs additional hard working, dedicated employees to fill the following positions. All positions require a high school diploma or GED. Credit and background checks will be performed.

UNIVERSAL TELLERS - We are hiring part time tellers for our Alpine and Marathon locations. Must be customer friendly, and able to work quickly and accurately with numbers. Experience a plus.

Compensation based on related experience.

Please apply at www.tranpecosbanks.com
Equal Opportunity Employer.
Member FDIC.

TransPecos Banks,
P. O. Box 9600, Alpine, Texas
432-837-0094

Are You Advertising?

Your customers want to know you'll be there **FOR THE LONG TERM.**

To advertise, call us at **432-837-3334**

the ALPINE AVALANCHE

JETT'S AT THE HOTEL PAISANO IN MARFA

is accepting applications for

Line Cooks and Prep Cooks

Bartenders

Servers

Applications are available at the front desk of the hotel or you may send a letter of inquiry to jettsgillrestaurant@gmail.com

THE HOTEL PAISANO IN MARFA

is expanding the management team of Jett's Grill. We are accepting resumes for the positions of

Bar Manager

FOH Manages

Resumes may be dropped off at the front desk or emailed to: manager.hotelpaisano@gmail.com



THE CITY OF ALPINE IS HIRING!

FOR A LIST OF OPEN POSITIONS VISIT THE CITY'S WEBSITE AT WWW.CITYOFALPINE.COM/EMPLOYMENT.

Join WTNB's Team Alpine Branch

Part & Full-Time Tellers

Please send resume and cover letter to: AGallego@WTNB.com
(101 East Avenue E, Alpine, TX 79830)

Competitive Compensation Packages
WTNB is a community bank with a pleasant, growth atmosphere and includes excellent benefits. Benefits include health and vision insurance and a matching 401k plan. WTNB also offers a very generous Paid Time Off (PTO) Plan which begins accruing upon an employee's initial hire date, along with Federal Bank Holidays.

WTNB West Texas National Bank

WTNB supports a diverse workforce and is an Equal Employment Opportunity Employer who does not discriminate against individuals on the basis of race, gender, color, religion, national origin, age, sexual orientation, gender identity, disability, veteran status or other classification protected by law. MEMBER FDIC. Equal Housing Lender.

BIG BEND CONCRETE

IS HIRING CDL DRIVERS.

Please come by 1406 W. Hwy 90, or call 432-837-7179 to apply.




Find Your Perfect Pet Match

The Pet Classifieds In Print & Online

Breeders | Rescue Adoptions
Adoption Fairs | Pet Merchandise
Pet Care Services

To advertise or subscribe, call **432-837-3334** or visit us online today.

Alpine Avalanche
www.alpineavalanche.com



**The Classifieds
RIGHT
ON THE
MONEY!**

Trade your unwanted items for fast cash with the Classifieds.

PLACE YOUR AD TODAY

432-837-3334

publisher@alpineavalanche.com

**ALPINE
AVALANCHE
CLASSIFIEDS**

P.O. Box 719
Alpine, TX 79831

NOTICE TO CREDITORS

Notice is given that original Letters Testamentary for the Estate of Jane McBath Bennack were issued on 7/29/2021, in docket number PR03058, pending in the County Court of Brewster County, Texas, to Patricia Jane Roach. All persons having claims against the estate, which is presently being administered, are required to submit them, within the time and manner prescribed by law, and before the estate is closed, addressed as follows:

Representative
Estate of Jane McBath Bennack
c/o John Fowlkes Attorney
PO Box 1470
Marfa, TX 79843



STUBBS QUARRY

Is seeking qualified applicants for the following positions:

- Quality Control Technician
- Heavy Equipment Operator
- Skilled Laborer

Benefits Include: 401k and Health Ins.
Competitive Wages
CSA Materials Inc. is an EEOC employer
Apply online at CSAmaterials.com

Look Who's Hiring?



Find great job opportunities with us.

- GROUNDSKEEPER
- KITCHEN STAFF
- LINE COOK
- HOUSEKEEPING



Please stop by and pick up applications at the
**Gage Hotel • Front Desk
Marathon TX**

HELP WANTED

**- FORT DAVIS STATE BANK -
FORT DAVIS**

FORT DAVIS STATE BANK is accepting applications for a Full-Time Teller position in Fort Davis. Full time benefits include competitive salary, health insurance, vacation and sick time, 401k contribution and supplemental insurance eligibility. Requirements for this position are basic office and computer skills, experience dealing with money, customer service skills and willing to be a team player. Bilingual preferred but not a requirement.

Applications are available at any of our three locations or call
(432) 426-3211.

Fort Davis State Bank is an Equal Opportunity Employer.
Member FDIC

**CITATION BY PUBLICATION
DETERMINATION OF HEIRSHIP**

The State of Texas
To all persons interest in the Estate of

**MARY EVA WRIGHT, Deceased,
Cause No. PR03065,
in County Court, Brewster County, Texas.**

The alleged heir(s) at law in the above-numbered and entitled estate filed an application to Determine Heirship in this estate on this 30th day of July, 2021, requesting that the Court determine who are the heirs and only heirs of IRBY HEARN WRIGHT, Deceased. and their respective shares and interests in such estate.

This Application may act on by this Court at any call of the docket on or after 10:00 A.M., on the first Monday next after the expiration of ten days from date of publication of this citation. All persons interested in this case are cited to appear before said Honorable Court by filing a written contest or answer to this Application should they desire to do so.

To ensure its consideration, you or your attorney must file any objection, intervention, or response in writing with the County Clerk of Brewster County, Texas on or before the above-noted date and time.

If this citation is not served within 90 days after date of its issuance, it shall be returned unserved.

GIVEN UNDER MY HAND AND SEAL OF SAID COURT at office in Alpine, Texas, on this 9th day of August 9, 2021.

Sarah Vasquez, Brewster County Clerk
201 W. Ave E
Brewster, Texas 79830

By *Sarah Vasquez* Deputy

the ALPINE



AVALANCHE

432-837-3334



"Last time I had a garage sale I did not put it in the paper and I did not have a good turn out at all. I always do because I put it in the paper."
- Susie Gonzales



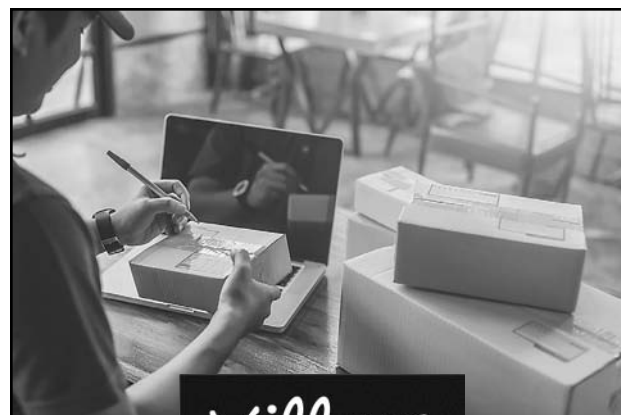
- **MEDICAL DOCTOR**
- **FAMILY NURSE PRACTITIONER**
- **DENTIST**
Must be licensed in the State of Texas
Alpine Location
- **PART TIME BUSINESS ADMINISTRATIVE ASSISTANT**

Applications maybe picked up at
1605 N. Ft. Davis Hwy.
Please call us before arrival
432-837-4812



**PREVENTATIVE
CARE HEALTH SERVICES**

For information,
please call 432-837-4812
Applications can be picked up at
**our locations or online at:
pchsmedclinic.org**



Village farms
Greenhouse Grown

EMPLOYMENT OPPORTUNITIES

Shipping/Receiving Clerk with **NEW PAY RATE OF \$15.00 per hour to start.** Opportunity to earn \$16.00/per hour upon competent completion of training. Fast Track to Management

Responsibilities include loading and unloading, forklift operation, preparation of shipping documents, verify deliveries, maintain warehouse and other general duties. Requirements: Must be willing to work flexible hours including evenings, weekends and holidays, ability to work independently, verbal and written communication skills, working knowledge of computers and forklift experience preferred. Opportunity to move to Supervisor level and pay within the first 6 months of employment. Must be able to pass a pre-employment drug screen.

Interested candidates should email or fax resume to **(432)729-3071 Ext. 607** or texashr@villagefarms.com, applications are also available at Village Farms Security Stations 3 Miles N. Hwy 17 Marfa, TX or 3 Miles S. Hwy 17 FT. Davis, TX.



**Government Business
is YOUR Business.**

**Get informed.
Get involved.
Read the public notices
in today's paper.**

Or go to
www.TexasPublicNotices.com
for free access to legal notices in Texas newspapers

A public service provided by member newspapers of the Texas Press Association

Full Service Printing!

See what your publication can look like on the newest community press in Texas.

Full Color Web Printing, Inserting, Labeling, Mailing, CTP, Tech Support



Call us today to find out more about our services!

granite PRINTING

Same Day Turnaround Available

We'll treat you like family.

432.837.3334

Subscribe today!

www.alpineavalanche.com

**CITATION BY PUBLICATION
DETERMINATION OF HEIRSHIP**

The State of Texas
To all persons interest in the Estate of

**IRBY HEARN WRIGHT, Deceased,
Cause No. PR03064,
in County Court, Brewster County, Texas.**

The alleged heir(s) at law in the above-numbered and entitled estate filed an application to Determine Heirship in this estate on this 30th day of July, 2021, requesting that the Court determine who are the heirs and only heirs of IRBY HEARN WRIGHT, Deceased. and their respective shares and interests in such estate.

This Application may act on by this Court at any call of the docket on or after 10:00 A.M., on the first Monday next after the expiration of ten days from date of publication of this citation. All persons interested in this case are cited to appear before said Honorable Court by filing a written contest or answer to this Application should they desire to do so.

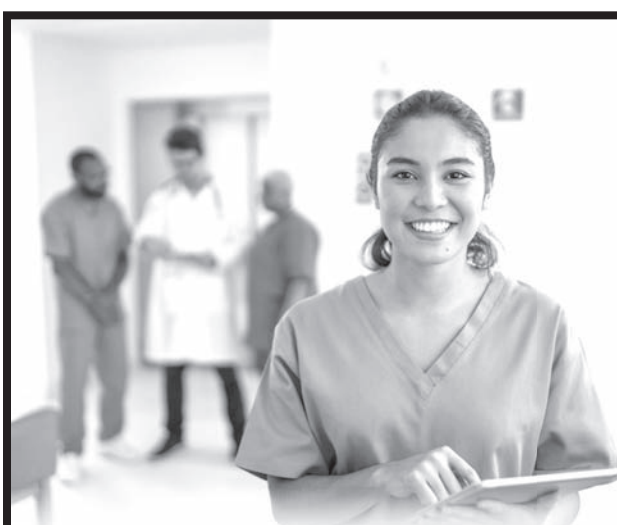
To ensure its consideration, you or your attorney must file any objection, intervention, or response in writing with the County Clerk of Brewster County, Texas on or before the above-noted date and time.

If this citation is not served within 90 days after date of its issuance, it shall be returned unserved.

GIVEN UNDER MY HAND AND SEAL OF SAID COURT at office in Alpine, Texas, on this 9th day of August 9, 2021.

Sarah Vasquez, Brewster County Clerk
201 W. Ave E
Brewster, Texas 79830

By *Sarah Vasquez*



LINKAGE TO CARE SPECIALIST

Requires Bachelor Degree, Full time or Part Time, 2 positions available. Focus on recently diagnosed patients who have HIV and Hepatitis C to Medical Care.

For information,
please call 432-837-4812
Applications can be picked up at
**1605 N. Ft. Davis Hwy. Ste. B
Alpine, TX**
or at our website: pchsmedclinic.org

LOOKING
for Full time or part time work?



WE CAN HELP!

We are currently looking to hire
MORNING SHIFTS.

6am-2pm or 8am-5pm

We can accomodate any schedule you have

- Starting pay - \$10/ per hour
- Closing pays 10% more per hour
- 5% weekend differential
- Benefits- Health and 401K
- Overtime Available
- Paid Vacation
- College Assistance
- Flexible schedule
- Uniform provided
- Discounts on meals



i'm lovin' it

Text "mcdworksforme" to 36453
Mcdonalds.com/careers
900 E. Avenue E Alpine Texas



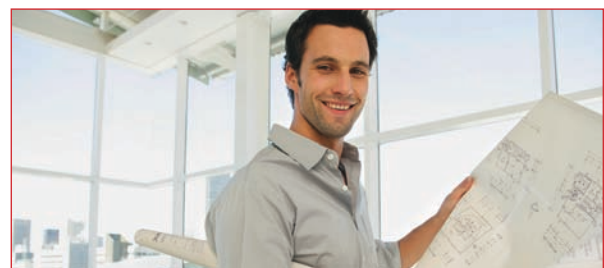
AVAILABLE POSITIONS

Sales Lead



This is a great and rare opportunity for a motivated Sales Lead to help grow our great business which includes a vast array of telecommunications products and services in the Big Bend Region and beyond. The ideal candidate will have at least three (3) years of sales leadership with previous experience in the Telecommunications area considered a plus. The candidate must be able to motivate sales staff through training, sales quotas, developing sales strategies, managing budgets, and resolving customer issues. Also, the candidate will need to have great communication and software skills as well as good organizational skills. The position is based in Alpine though a valid driver's license will be required for occasional travel. The compensation is competitive with experience. BBT offers exceptional benefits.

**Commercial
Sales Associate**

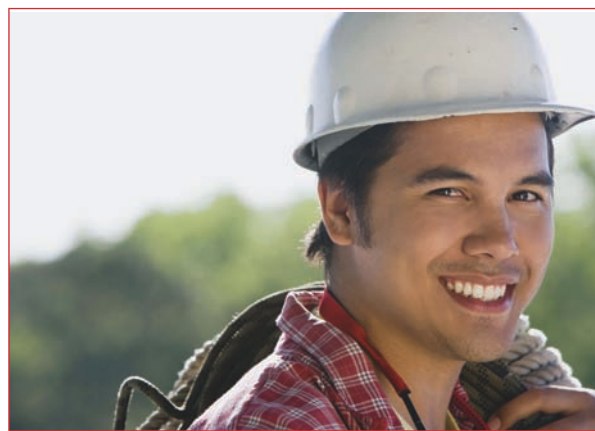


If you are looking to start a new and exciting career, have strong communication skills and enjoy the challenge of meeting and exceeding your income goals, Big Bend Telephone is the perfect place to start. The ideal candidate will generate business with customers/prospects and propose exceptional technology solutions to enhance business operations and solve issues. Training, using leading edge sales tools and tactics to promote and sell BBT products and services, will be provided. Responsibilities and qualifications are as follows but not limited to:

- Develop new accounts by researching and identifying potential leads, soliciting new business, building connections, providing technical information and advice, and preparing quotes
- Drive continued sales by checking established accounts and suggesting new and related products and explain and provide basic training on products and technical features
- Stay informed of market changes with technology by attending educational workshops and reviewing professional publications.
- Accept ownership for maintaining and expanding sales and accomplishing assigned individual and team tasks and goals.
- Ability to understand ROI and Business Plans.

Applicant must be able to travel, stay overnight, and work overtime on weekends and holidays, as needed. Competitive applicants must possess a valid driver's license, have a good driving record as well as be insurable under the Company's insurance policy. Competitive compensation and Benefits Package are included. There is a \$1,000 signing bonus for new hires (terms and conditions apply).

**Construction
Technician**



Great opportunity for one candidate who enjoy working outdoors. Previous telecom work experience would also be a plus. Individual should expect physically demanding assignments as well as an 80 lb. lifting requirement. Candidate will need to possess basic computer skills. Also, candidate may be required to work overtime and/or weekends and holidays as needed. Individual must have CDL license, or be able to obtain one within 90 days of employment. There is a \$1,000 signing bonus for new hires (terms and conditions apply).

Technology Service Associate



A career opportunity is available in the Big Bend area. BBT is looking for a Technology Service Associate to provide excellent customer service with advanced technology while living and working in the Terlingua/Lajitas area. The job entails networking comprehension, Wi-Fi services, installation and troubleshooting of fixed wireless, fiber optics, copper, and satellite platforms. In this ever changing industry, applicant must be able to adapt to change and make decisions based on established procedures. Must possess and utilize good customer service skills along with being able to work in the desert outdoors. Position requirements are minimum High School Diploma or GED equivalent with 2 years of experience in a related field. Applicants must possess a valid driver license, have a good driving record and be insurable under the Company's insurance policy. Being technically inclined would be ideal for this position. There is a \$1,000 signing bonus for new hires (terms and conditions apply) and long-term career potential for the right applicant.

For more information we invite you to visit <http://www.bigbend.net/employment/>

Please mail your application or resume to
BBT, Attn: HR, 808 N. 5th St., Alpine, TX 79830
Or email resume to: HR@bigbend.com

Please no phone calls.

EOE

BBT participates in E-Verify and promotes a Drug-Free Workplace.

**CORRECTED CITY OF ALPINE, TEXAS
COMBINED BUDGET SUMMARIES**

REVENUE	PROPOSED FY 2020-2021	PROPOSED FY 2021-2022
NON DEPARTMENTAL – GENERAL	\$ 40,000	\$ 40,000
ADMINISTRATION	\$ 881,542	\$ 843,588
MUNICIPAL COURT	\$ 39,600	\$ 40,450
POLICE	\$ 4,750	\$ 4,850
AD VALOREM TAX	\$ 1,970,944	\$ 1,992,874
BUILDING SERVICES	\$ 60,500	\$ 79,000
ANIMAL CONTROL	\$ 46,950	\$ 45,200
PARKS / COMMUNITY RECREATION	\$ 17,850	\$ 22,600
STREETS	\$ 98,700	\$ 98,700
TRANSFERS	\$ 1,122,784	\$ 1,180,798
ALL TAXES	\$ 1,907,000	\$ 1,982,000
FIRE DEPARTMENT	\$ 25,000	\$ 20,000
General Fund Sub-Total	\$ 6,215,620	\$ 6,350,060
INTEREST & SINKING	\$ 146,918	\$ 148,758
NON DEPARTMENTAL – ENTERPRISE	\$ 60,200	\$ 5,500
WATER	\$ 1,800,500	\$ 1,894,000
SEWER	\$ 840,000	\$ 750,000
SANITATION / RECYCLING	\$ 2,241,000	\$ 2,276,650
TRANSFERS	\$ 151,577	\$ 967,630
AIRPORT	\$ 661,600	\$ 655,536
GAS FUND	\$ 2,168,730	\$ 2,026,970
Enterprise Fund Sub-Total	\$ 7,923,607	\$ 8,576,286
Tourism Fund - Hotel Occupancy		
Tax Sub-Total	\$ 425,000	\$ 879,859
TOTAL REVENUE	\$ 14,711,145	\$ 15,954,963 8.45%

EXPENDITURES	PROPOSED FY 2020-2021	PROPOSED FY 2021-2022
NON DEPARTMENTAL – GENERAL	\$ 562,626	\$ 582,393
CITY GOVERNMENT	\$ 123,274	\$ 139,274
ADMINISTRATION	\$ 401,733	\$ 309,122
HUMAN RESOURCE	\$ 28,247	\$ 32,627
FINANCE	\$ 409,562	\$ 422,615
MUNICIPAL COURT	\$ 54,349	\$ 73,999
POLICE	\$ 1,398,039	\$ 1,497,922
FIRE DEPARTMENT	\$ 62,418	\$ 122,774
AD VALOREM TAX	\$ -	\$ -
BUILDING SERVICES	\$ 225,238	\$ 231,352
ANIMAL CONTROL	\$ 328,221	\$ 379,553
PARKS / COMMUNITY RECREATION	\$ 430,003	\$ 525,670
STREETS	\$ 2,029,044	\$ 1,846,726
BUILDING MAINTENANCE	\$ 162,866	\$ 186,033
General Fund Sub-Total	\$ 6,215,620	\$ 6,350,060
INTEREST & SINKING	\$ 146,918	\$ 148,758
NON DEPARTMENTAL – UTILITY BILLING	\$ 379,748	\$ 351,656
WATER	\$ 1,806,013	\$ 2,160,852
SEWER	\$ 834,316	\$ 1,207,735
SANITATION / RECYCLING	\$ 2,073,200	\$ 2,173,537
AIRPORT	\$ 661,600	\$ 655,536
GAS FUND	\$ 1,893,730	\$ 2,026,970
GAS FUND RESERVES	\$ 275,000	\$ -
Enterprise Fund Sub-Total	\$ 7,923,607	\$ 8,576,286
Tourism Fund - HOT Sub-Total	\$ 425,000	\$ 879,859
TOTAL EXPENDITURES	\$ 14,711,145	\$ 15,954,963 8.45%

We're in the business of growing your
business. Reach more than 5,000 readers
each week with the Alpine Avalanche.
CALL JT MARONEY AT 432-837-3334.



118 NORTH 5TH STREET | ALPINE, TEXAS 79830
WWW.ALPINEAVALANCHE.COM

Call us at 432.837.3334

Subscribe to the Avalanche today!

or visit us online www.alpineavalanche.com