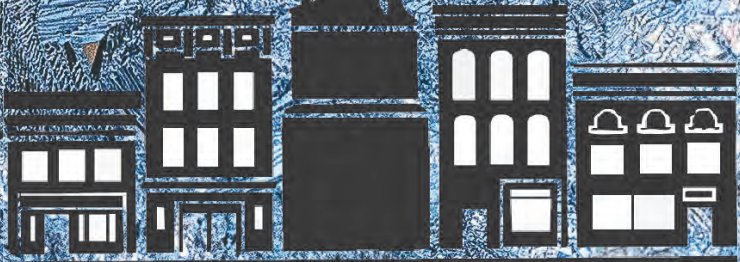


JANUARY
10TH & 11TH

in historic downtown Perrysburg

January 2020

Winterfest



Downtown Perrysburg, Inc.

downtownperrysburg.org

Perrysburg Winterfest

January 10th & 11th

Can You Find...


CITIZEN ADVISORY
GROUP, LLC

Your Retirement Journey Begins Here

Ice Sculpture?

1. Take a Picture
2. Post on our Facebook Page
www.facebook.com/citizenadvisory
3. Chance to Win Four Tickets to a Toledo Baseball Game

www.citizenadvisory.com

11th Winterfest is all about the fun

Downtown Perrysburg, Inc. (DPI) is excited to announce that this year the 2020 Perrysburg Winterfest is celebrating 11 years!

Winterfest comes back to the downtown Perrysburg community January 10 and 11, and DPI hopes all will join them in bringing this tradition back to the more than 15,000 visitors expected to participate.

This year, DPI will host the People's Choice Professional Ice Carvers Competition.

Check out the schedule of events happening in downtown Perrysburg all weekend:

•FRIDAY, JANUARY 10

5:30 p.m. to 8:30 p.m.—FREE family fun activities presented by Perrysburg Visitors and Convention Bureau.

•Six Live Ice Carvings for the People's Choice Professional Ice Carvers Competition. Look for QR codes to vote for your favorite.

•Horse-drawn trolley rides.

•Commissioned carvings on display from area businesses.

•7 p.m. to 11 p.m., for adults 21 and over—Brews, Bourbon + Barbecue, night event.

Join DPI and Chris Cricket live for a rustic, country-themed night. Expect to have a variety of delicious food options paired with amazing craft brews from local favorites.

Look for bourbon-influenced craft beers along with a few delicious signature bourbon cocktails.

This event is held in conjunction with the 11th annual Perrysburg Winterfest celebration, and each \$50 ticket includes:

- Entry to the heated tent
- Live music and entertainment
- Barbecue fare

•One complimentary craft beverage. Additional drinks available for purchase.

Participating breweries: Earnest Brew Works, Inside the Five Brewing Company, Patron Saints Brewery and Wild Side Brewing Company.

Participating restaurants: Benchmark, Swig, Odd Fodder and Batch Please Cookies & Treats.

To reserve tickets, visit downtownperrysburg.org/winterfest/.

•SATURDAY, JANUARY 11

11 a.m. to 4 p.m.—FREE family fun activities presented by Perrysburg Visitors and Convention Bureau.

11 a.m. to 3 p.m.

•Round 2 of the People's Choice Carving Competition with six professional carvers competing.

Look for QR codes around downtown businesses to vote.

•Horse-drawn trolley rides.

•Commissioned carvings on display from area businesses.

Heated tent activities will include:

•Laurel Princess Parties featuring Winter Sisters, Marvel Super Heroes and JoJo Characters presented by St. Luke's Hospital.

•Magic with Eli: two shows-11:30 a.m. and 1 p.m.

•Virtual reality snowball fights.

•Giant Jenga, big table checkers, corn hole and connect four.



This event is held in conjunction with the 11th annual Perrysburg Winterfest celebration, and each \$50 ticket includes:

- Entry to the heated tent
- Live music & entertainment
- Food samples from local purveyors
- One complimentary glass of wine. Additional drinks available for purchase.
- Participating Restaurants: Benchmark, Hollywood Casino Toledo, Zingo's Mediterranean, Swig and 7 Little Cupcakes

To reserve tickets, visit downtownperrysburg.org/winterfest/.

DPI thanks the 2020 Perrysburg Winterfest sponsors: Signature Sponsor: Welch Publishing; Family Fun Sponsor: Perrysburg Visitors & Convention Bureau; Supporting Sponsors: Maeger Designs, Huntington Bank and St. Luke's Hospital.

DPI is a community based 501(c)(3) non-profit organization with a mission to provide family events that highlight the community and contribute to the quality of life that makes Perrysburg the "Best Suburban Downtown."

The organization's success is credited largely to its members, sponsors, and volunteers who lend their names and financial support to the organization and the many activities that they proudly present.

Special thanks go to Patron Members: Owens-Illinois, Mercy, Chad Osterholt and Allstate Insurance.

To get involved or learn more about DPI and its events, go to downtownperrysburg.org and visit DPI's Facebook page.

•St. Rose School, Primrose School and West Side Montessori will offer winter themed crafts and activities.

•Cookie decorating.

Noon to 3 p.m.

•Polar Bear Slide (outside tent), 20-foot high.

•A giant ice wall to sign.

For the adults 21 and over:

7 p.m. to 11 p.m.

•Après Ice-A Retro Ski Mixer—can't make it to the slopes this year? Join DPI for an evening filled with delicious wines/après ski style cocktails and brews, local fare for eats, and live music and dancing with Venyx.

Drink stations will have a beer option, wine choices—and look for a specialty drink sprinkled in.

Head to Whistler for a delicious wine from the Pacific Northwest; Aspen for Rosè, Bubbles and shots; Tahoe for a California wine selection or Petoskey for Petoskey Brewing craft beers. Don't miss the ice luge sponsored by Kahlua and the Guinness selfie station.

Retro ski wear is welcome but definitely not required.



TURN THE CORNER TO YOUR GOALS.



You know what you want... you just need the "how." With the convenient technology you want and the personal assistance you need, Cornerstone can help you turn that corner.

[Join us today!](#)



the credit union in your corner
800.777.6728 | www.CCFinancial.com
VISIT OUR PERRYSBURG BRANCH AT 28543 OREGON RD.



Vintage Groves

An Eclectic Vintage Boutique

Vintage furniture, home decor, jewelry, boutique apparel, local artists, holiday florals and unique gifts.

Stop in and **HUNT TREASURES** during Winterfest!

Downtown Perrysburg at 116 Louisiana Ave. • 419-931-1010

Winterfest 2020

is sponsored by:

SIGNATURE SPONSOR:



FAMILY FUN SPONSOR:



SUPPORTING SPONSORS:




Winterfest: A flurry of family fun



Photos above and at right show fun activities from past Winterfests.

Downtown Perrysburg Inc. has organized another weekend of winter fun for families and others.

Winterfest will welcome attendees January 10 and 11 to the downtown area. Saturday, January 11, from 11 a.m. to 3 p.m., will be a day of free activities for families.

There will be a large heated tent at the intersection of Second Street and Louisiana Avenue in downtown Perrysburg.

Inside that tent will be:

- Virtual reality snowball fights.
- Magic with Eli: two shows—one at 11:30

a.m., second at 1 p.m.

- Cookie decorating.
- Yard games and a variety of children's activities inside the tents.
- Friday night carriage rides will be available from 5:30-8 p.m.
- Live ice sculpting stations throughout downtown as well as the Winter sisters and Marvel characters hanging around, compliments of Laurel's Princess Parties.
- A polar bear slide directly outside the tent and a giant ice wall for those interested in signing it will add to the fun.



Visit the 20-foot high polar bear slide Saturday, Jan. 11 noon to 3 p.m.!

Check out the following ice sculpture displays

The following businesses purchased special ice sculptures for Winterfest visitors to enjoy in downtown Perrysburg.

- Angel 101
- Citizen Advisory Group
- Casa Barron
- Cornerstone Community Financial Credit Union
- Farmers & Merchants State Bank
- Edward Jones (Odegaard Office)
- GenoaBank
- Comprehensive Centers for Pain Management
- MAAKIL Group, Ltd.
- Humbarnd Family McDonalds
- Elect Speweik
- McGivern Jewelers
- Toby's Lawn Care, LLC
- Lock-It-Up
- PMBA Architects
- The Gown Shop—Bridal
- Skotynsky Financial Group LLC
- City of Perrysburg
- Danberry Realtors
- Zingo's
- Historic Perrysburg, Inc
- Taylor Hyundai of Perrysburg

Which sculpture is your favorite?

Thank you 2020 Perrysburg Winterfest sponsors!

Signature Sponsor: Welch Publishing Company

Family Fun Sponsor: Perrysburg Visitors & Convention Bureau

Supporting Sponsors: Maeger Designs, Huntington Bank and St. Luke's Hospital.

Enjoy the Winterfest!

C&L Sanitation, Inc.

Northwest Ohio's largest supplier of portable restrooms

Consistently serving Northwest Ohio for more than 45 years!

- Portable Restrooms
- Portable Sinks
- Restroom Trailers
- Portable Showers
- Septic Tank Cleaning
- Luxury Accommodations

C & L SANITATION, INC.

Call (419)874-4653
www.clswrents.com

Winter Blues Got You Down? You are NOT alone!

NAMI Wood County offers free classes and support groups for individuals living with a mental illness and their family members.

To learn more:
419-352-0626 or
info@namiwoodcounty.org

NAMI Wood County

Wood County
ADAMHS
Assault, Drug, and Mental Health Services Board

Winterfest 2020

Friday and Saturday ticketed events for those 21 and older

Adults aged 21 and older are welcome to enjoy the following special features of Winterfest.

•FRIDAY, JANUARY 10, 7 p.m. to 11 p.m.

Craft Brews, Barbecue and Bourbon.

Join DPI and Chris Cricket live for a rustic, country-themed night. Expect to have a variety of delicious food options paired with amazing craft brews from local favorites.

Look for bourbon-influenced craft beers along with a few delicious signature bourbon cocktails. This event is held in conjunction with the 11th annual Perrysburg Winterfest celebration, and each \$50 ticket includes:

- Entry to the heated tent.
- Live music and entertainment.
- Barbecue fare.

•One complimentary craft beverage. Additional drinks available for purchase.

Participating breweries: Earnest Brew Works, Inside the Five Brewing Company, Patron Saints Brewery and Wild Side Brewing Company.

Participating restaurants: Benchmark, Swig, Odd Fodder and Batch Please Cookies & Treats.

For tickets, visit downtownperrysburg.org/winterfest/.

SATURDAY, JANUARY 11, 7 p.m. to 11 p.m.

•Après Ice-A Retro Ski Mixer—can't make it to the slopes this year? Join DPI for an evening filled with delicious wines/après ski style cocktails and brews, local fare for eats, and live music and dancing with Venyx.

Drink stations will have a beer option and wine choices—and look for a specialty drink sprinkled in.

Head to Whistler for a delicious wine from the Pacific Northwest; Aspen for Rosè, Bubbles and shots; Tahoe for a California wine selection or Petoskey for Petoskey Brewing craft beers. Don't miss the ice

luge sponsored by Kahlua and the Guinness selfie station.

Retro ski wear is welcome but definitely not required.

Each \$50 ticket includes:

- Entry to the heated tent.
- Live music and entertainment.
- Food samples from local purveyors.
- One complimentary glass of wine. Additional drinks available for purchase.

•Participating restaurants: Benchmark, Hollywood Casino Toledo, Zingo's Mediterranean, Swig and 7 Little Cupcakes

•To reserve tickets, visit downtownperrysburg.org/winterfest/.

DPI thanks the 2020 Perrysburg Winterfest sponsors: Signature Sponsor: Welch Publishing; Family Fun Sponsor: Perrysburg

Visitors & Convention Bureau; Supporting Sponsors: Maeger Designs, Huntington Bank and St. Luke's Hospital.

DPI is a community based 501(c)(3) non-profit organization with a mission to provide family events that highlight the community and contribute to the quality of life that makes Perrysburg the "Best Suburban Downtown."

The organization's success is credited largely to its members, sponsors, and volunteers who lend their names and financial support to the organization and the many activities that they proudly present. Special thanks go to Patron Members: Owens-Illinois, Mercy, Chad Osterholt and Allstate Insurance.

To get involved or learn more about DPI and its events, go to downtownperrysburg.org or visit DPI's Facebook page.

GET YOUR TICKETS NOW FOR:

DOWNTOWN PERRYSBURG, INC. PRESENTS
CRAFT BREWS + BOURBON
and barbecue
 FRIDAY, JANUARY 10, 2020
 local breweries - bbq eats - live music

A RETRO SKI MIXER

après ice
 JANUARY 11, 7-11 PM

WINE * COCKTAILS * BREWS * FOOD * LIVE MUSIC



Foster Jones Langham Investment Group of Wells Fargo Advisors is ready to work for you



Team members are, from left: Abbey Cymbola, Christine Rutherford, Mick Foster, Marcus Jones, Christie Watson, and Matt Langham.

CAR-1219-02550

Wells Fargo Advisors is a trade name used by Wells Fargo Clearing Services, LLC. Member SIPC.

The Foster Jones Langham Investment Group is a full service wealth management team with Wells Fargo Advisors providing a variety of financial and investment resources including investment management, retirement planning, estate investment planning, insurance protection and trust services.

The team is comprised of associates Michael "Mick" Foster, Senior Vice President-Investment Officer; Marcus Jones, Senior Vice President-Investment Officer and Matt Langham, First Vice President-Investment Officer. Rounding out the team are staff members Abbey Cymbola, Client Associate; Christie Watson, Client Associate, and Christine Rutherford, Associate Financial Advisor. The Foster Jones Langham Investment Group is centered on a simple philosophy.

"By taking time to understand our clients' values and priorities, we become better equipped to help them realize the vision of the life they want to lead and the legacy they eventually wish to leave. Our main objective is to enable our clients to navigate an ever-changing market to diversify their portfolios, reduce long-term risk, and potentially maximize returns. Although we cannot control the market, we can control the amount of measurable risk that our clients take in their investment accounts."

The team is also very immersed in the community. The Foster Jones Langham Investment Group, along with the Wells Fargo Housing Foundation, has helped fund numerous builds for Habitat of Wood County. Each partner is also active within the community by supporting local sports teams, serving on multiple boards, and volunteering at area churches.

Call 419-872-3858 or stop in at 28300 Kensington Lane, Perrysburg to learn more.

Insurance products are offered through nonbank insurance agency affiliates of Wells Fargo & Company and are underwritten by unaffiliated insurance companies.

Winterfest 2020

Welcome Ice Carvers!

Aaron Whitten from Milford, Michigan • Titus Arensburg from Columbus, Ohio
 Jim Houser from Fort Wayne, Indiana • Ryan Roth from Perrysburg, Ohio
 Matt Larsen from Detroit, Michigan • Jason Bartlett from Columbus, Ohio



Need a Second Opinion?

Call today to take advantage of our no-obligation
 "Second Opinion Service."
 We look forward to helping you. **419-873-1400.**

LIFE WELL PLANNED.



"Think Local First"

www.Skotynsky.com
213 Louisiana Ave. Perrysburg, Ohio 43551

Securities offered through Raymond James Financial Services, Inc. Member FINRA/SIPC.
 Investment advisory services offered through Raymond James Financial Services Advisors, Inc.
 Skotynsky Financial Group, LLC is not a registered broker/dealer
 and is independent of Raymond James Financial Services, Inc.

Ice sculpting's colorful beginnings

The history of ice carving begins with the harvesting of ice. The earliest known record of an ice harvest is found in the Shih Cheng or "Book of Songs" written at about 600 B.C.

This collection of stories describes the everyday life of the Shensi warrior-farmers as they lived in the highlands of northwest China, and mentions their winter routine of flooding with water.

When the water had frozen, ice was cut into blocks and stored in ice-houses. The ice was used in the warmer months to keep fish fresh.

In the 1600s, native hunters and fishermen of the Chinese province of Heilongjiang, on the border of Russia, designed ice lanterns for dark winter nights. They filled buckets with water to make ice, then slid it out, and put a candle in the hole to make a lantern.

The trend spread, and people started hanging decorated lanterns from homes and parading them in carnivals.

In 1897, the Transsiberian Railway was extended through the small Chinese fishing town of Harbin in Heilongjiang, once occupied by Russia.

As a result of the traffic, Harbin grew into a cosmopolitan city. With below freezing winds from Siberia, and ice from the frozen Songhua river, Harbin became the home of the annual International Ice and Snow Sculpture Festival.

Currently, this festival features the work of thousands of artists from all over the world. The first well-documented ice palace was built as the setting for a monstrous joke.

On the frozen River Neva, in the winter of 1740, a shivering bride and groom spent their wedding night in a building of ice. The palace was commissioned by the Empress Anna Ivanovna, who like Peter the Great, had a malicious sense of humor.

In St. Petersburg, to distract the people from the bitter cold, Empress Anna had an ice palace built as the stage for a wedding. Anna forced Prince Mikhail Golitsyn to marry her exceptionally ugly servant.

After the church ceremony, the bride and groom, covered in furs, seated in an iron cage fastened to the back of an elephant, headed an elaborate procession including horses, camels, wolves and pigs.

Guards posted outside made sure that they spent the whole night in the frozen mansion.

Harvesting natural ice increased throughout the world until the mid-1800s when ice manufacturing began. In 1834, Jacob Perkins, obtained a British patent for the first ice making machine using ether.

In 1859, Ferdinand Carre invented an ice machine that used ammonia, a much more volatile liquid.

Cans of water were lowered into a 15 degree brine (calcium chloride) solution chilled by an ammonia system.

Air was bubbled into the center of the can to make clear ice for carving. By 1920, 750,000 blocks of ice were made every day in the United States alone.

In 1892, Nellie Melba was performing in Wagner's opera "Lohengrin" at Covent Garden. The Duke of Orleans gave a dinner party to celebrate her triumph. For the occasion, Escoffier created a new dessert, and to display it, he used an ice

sculpture of a swan because swans were featured in that opera.

The swan carried peaches which rested on a bed of vanilla ice cream topped with spun sugar.

The Sapporo Snow Festival which began in 1950 is one of Japan's largest winter events.

Every winter, about two million people come to Sapporo to see hundreds of beautiful snow and ice sculptures.

For seven days in February, these statues and sculptures turn Sapporo into a winter dreamland of crystal-like ice and white snow. In 1955, the Self-Defense Force joined in and built the very first massive snow sculpture, for which the Snow Festival has become famous.

In 1964, Virgil Clinebell invented a machine that produced 15-pound blocks of clear ice. This led to the CB300 which makes crystal clear 300-pound blocks of ice. Modern carvers use crystal clear ice to make ice carvings.

In recent times Ice carving has become more specialized. Because of this specialization, more and more professional chefs are leaving ice art to join ice carving companies.

Since 1989, Fairbanks Alaska has hosted the annual World Ice Art Championships. More than 100 sculptors come from around the world each year to sculpt large blocks of pristine natural ice.

The competition has two categories: single block and multi-block and each competition is further separated into abstract and realistic sculptures.

In the late 1980s, there was a tool revolution led by Mark Daukas. By winning numerous competitions, he brought attention to the die grinder and angle grinder. Steve Brice has invented numerous tools including many ice carving bits and the nail-board.

The art of ice sculpture is continually evolving; ice is spun on lathes and cut by routers controlled by computers.

Affordable ice makers are now available that make 300-pound crystal clear blocks in your own freezer.

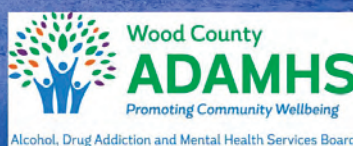
Information from ice sculptingtools.com/history.

Seeking Support During the Winter Season?

Dial 2-1-1

To be connected to resources for mental health
 and addiction services today.

#HelpIsHere



Last year's winners (January 11 & 12, 2019)

First Place
 First place: Spiderman by Dan Rebholz, Chicago.

Second Place
 Second place: Flying Pig by Titus Arensberg, Columbus.

Third Place
 Third place: Dinosaur by Ryan Roth, Perrysburg.

Edward Jones[®]

MAKING SENSE OF INVESTING

WE WISH YOU AND YOURS A WONDERFUL AND PROSPEROUS NEW YEAR!

Downtown Perrysburg office
 215 Louisiana Avenue
 Perrysburg, OH 43551
 (419) 874-8504

Lee W. Odegaard, AAMS
 Loren J. Odegaard, AAMS
 James L. Fugett
 Aaron J. Arnold

Member SIPC

www.edwardjones.com

Warm winter wishes from Way!

"Let's go to the Library!"

WAY PUBLIC LIBRARY • 419-874-3135 • waylibrary.info

You've tried the REST, now call the BEST!
 Let our PROFESSIONAL craftsmen take care of your HOME REPAIR needs.

PRO Handyman Plus

- Plumbing • Electrical (including upgrades) • Carpentry
- Painting • Drywall • Ceramic Tile
- Flooring • Remodeling: Kitchen, Bathroom & Basement
- Gutter Cleaning & Installation
- Roofing • Siding Repair & Installation • Windows • Doors
- General Handyman Repairs

PRO Handyman Plus

Save \$50
 on any work over \$250

Not valid with any other offers. Must present coupon at time of estimate. Expires 3-8-20.

419-534-6065 | www.prohandyman.com
 Serving Wood, Lucas, Fulton & Monroe

Free estimates • 1-year Guarantee • Senior Discounts
 Insured & Bonded • Locally Owned • No Job Too Small

Letterhead • Envelopes • Business Cards
 Carbonless Forms • Brochures • Tabloids
 Raffle Tickets • Newspapers

Stamps • Notary Stamps
 Bar Coding • Raised or Flat Printing
 Embossing • Binding/Padding
 Lamination • Graphic Design

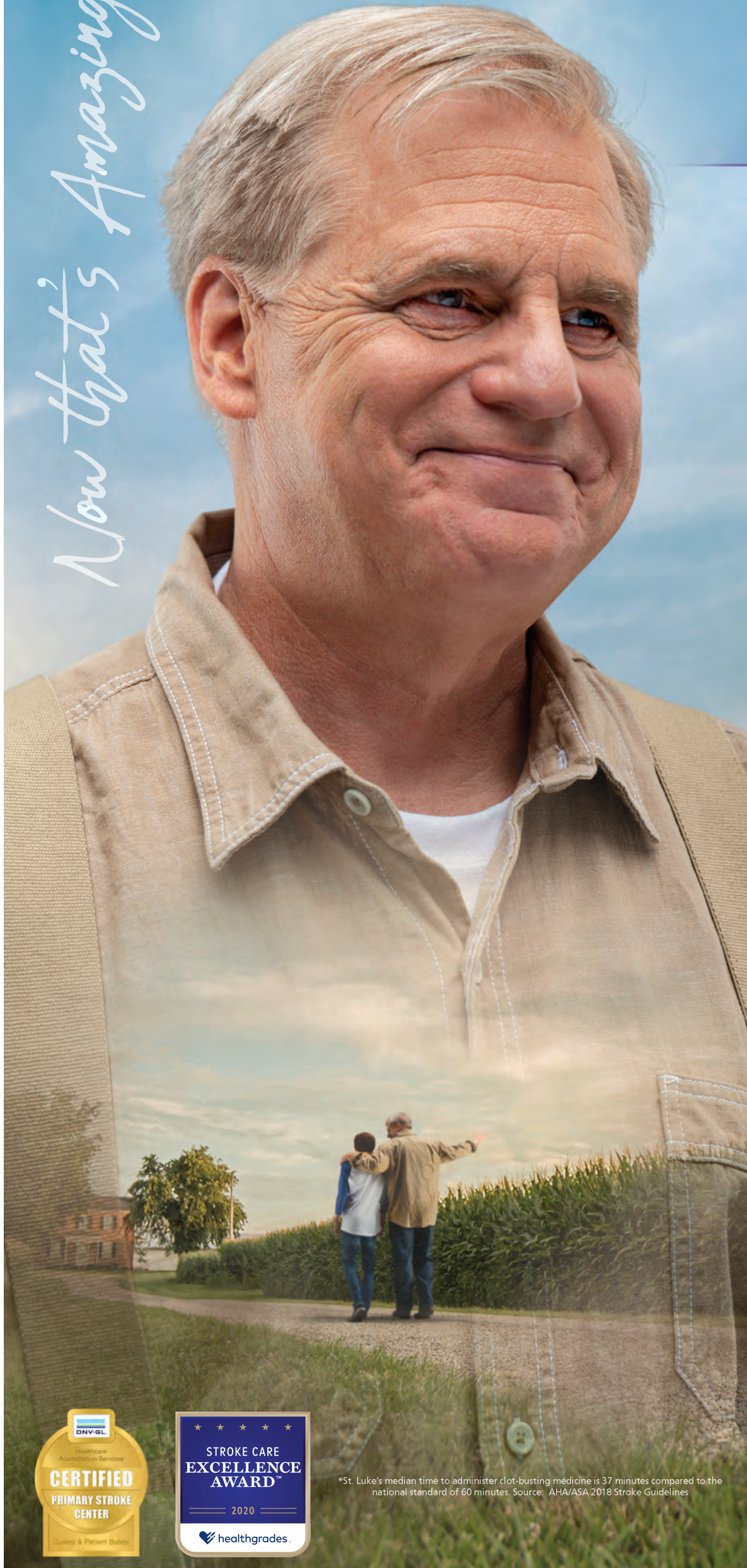
Web Design • Website Development
 Digital Printing
 Discounted Mailings (C.A.S.S. Certified)
 Variable Data • Copies • Color & B/W

CALL 419-874-2528
 130 LOUISIANA AVENUE, PERRYSBURG, OH
perrysburgprinting.com • Email: chetw@perrysburg.com

Proud to be the Signature Sponsor of:

Winterfest 2020

Now that's Amazing Care



Amazing Care means life after a stroke can be life as usual.

St. Luke's treats strokes an amazing 23 minutes faster than the national standard.* We do remarkable things here. Our Primary Stroke Center combines highly trained stroke experts with breakthrough technology to restore blood flow, limit brain damage and make it possible to return to life as usual. St. Luke's changes lives by changing expectations about acute stroke survival.

Now that's Amazing Care.



St. Luke's Hospital
Health, plus care.™

StLukesHospital.com



*St. Luke's median time to administer clot-busting medicine is 37 minutes compared to the national standard of 60 minutes. Source: AHA/ASA 2018 Stroke Guidelines