

# Explore Central Kansas

# 2016



A supplement to the  
Ellsworth County Independent/Reporter

# What's Inside

*Pages 3-5 — Ellsworth*

*Pages 6-9 — Wilson*

*Pages 10-11 — Lucas and Russell County*

*Page 12 — Kanopolis*

*Pages 13-14 — Salina*

*Page 15 — Abilene*

*Pages 16-18 — Marquette*

## On the Cover

The photograph, provided to the I-R by the Russell Chamber of Commerce, was taken at the town's annual Freedom Fest.

*Pages 19-21 — Lindsborg*

*Pages 22-23 — McPherson*

*Page 24 — Hays*

*Page 26 — Lincoln, Great Bend*



**SUGAR SHACK**

Shaved Ice • Ice Cream • Cotton Candy • Bike Rentals

125 South Douglas, Ellsworth, KS  
**OPEN SUMMERS 3:30 - ?**



**NEX-TECH<sup>®</sup> wireless**

Hometown Feel,  
**Big City Coverage**

The lowest rates, flexible plans, exceptional customer service and coverage for everywhere you are ... that is the **Something Different** you can expect from Nex-Tech Wireless. All the same service as the big box providers, but with a "real" down-to-earth feel.

Visit our website for a location near you.  
[www.nex-techwireless.com](http://www.nex-techwireless.com)  
**877.621.2600**

\* Customers are subject to taxes and must meet credit requirements. Limited time offers. Certain restrictions apply, see store for details. Nex-Tech Wireless is eligible to receive support from the Federal Universal Service Fund in designated areas. As a result, Nex-Tech Wireless must meet reasonable requests for service in these areas. Questions or complaints concerning service issues may be directed to the Kansas Corporation Commission Office of Public Affairs and Consumer Protection by calling 1-800-662-0027.

Ellsworth celebrates its CattleTown Heritage every August with a Cowtown Festival and Rodeo, left. The community also observes July 4 with a celebration and fireworks display the Saturday before the holiday. There is no admission charge for the Star Spangled Spectacular.



Information: Ellsworth-Kanopolis Chamber of Commerce, (785) 472-4071, or [www.goellsworth.com](http://www.goellsworth.com).

## *Ellsworth showcases western heritage*

Local historian Jim Gray, known far and wide as “The Cowboy,” delights in recounting the history of Ellsworth, where Gen. Custer, Wild Bill Hickok and other Old West figures added to their legends. Many say you can feel the history of those times in Ellsworth as you walk the streets.

To showcase those days, Ellsworth conducts its annual **Cowtown Festival**, this year on Aug. 20. Activities will include a parade, tractor pull, beer garden, live entertainment, arts and crafts and the re-enactment that has become a Cowtown tradition — the “Shooting of Sheriff Whitney.” The town’s marquee event, which grows each year, also includes the **El-Kan Western Riders Rodeo**.

Also on the yearly agenda is the town’s annual fireworks spectacular the weekend before July 4 — June 25 this year — held in conjunction with the **Run for the Soul Poker Run**.

Information: Ellsworth-Kanopolis Chamber of Commerce, (785) 472-4071.

Ellsworth also has its share of good places to eat. Downtown has **Pretty Boy Floyds**, an upscale restaurant in the town’s historic underground, for a steak or seafood dish. Reservations suggested. Pretty Boy Floyds, accessible from the alley, is under the **Village Mall**, 210 N. Douglas Ave. Nearby are several

interesting shops, including the region’s only Hallmark store, Robson’s Card & Gift Shop, and the Classy Lady Boutique, a new women’s clothing store.

Restaurant hours:  
5 to 9 p.m. Thursday-Saturday.  
Information or reservations:  
(785) 472-2183.

You also can’t go wrong with a steak at the **Ellsworth Steak House**, intersection of Kansas Highways 140 and 156.

Owners Rick and Tina Davis work overtime to make sure everything is just right. And don’t forget to ask Rick about his experiences as a professional soccer player.

Hours: 7 a.m. to 1:30 p.m. and 5 to 9 p.m. Tuesday-Saturday; 8 a.m. to 2 p.m. Sunday. Closed Monday.  
Information: (785) 472-3043.

(Of course, these aren’t the only restaurants in Ellsworth. Ellsworth offers Chinese and Mexican and it’s hard to beat the homemade pies and soups at **Paden’s**. Or what about a German pizza from **Gambino’s** — and a game of bowling at **Coach and Four**?)

Other attractions:  
**Hodgden House Museum** —  
There is no end to the displays on the museum grounds in the south part of

Ellsworth. You’ll find a livery stable, one-room schoolhouse, Baptist Church, a 1911 caboose and much more.

Hours: 10 a.m. to 4 p.m. Tuesday through Saturday.  
Information: (785) 472-3059.

**Ellsworth Area Arts Council Gallery**,  
223 N. Douglas Ave. —

In addition to monthly exhibits and a permanent collection that includes work by “The Kansan,” Charles Rogers, the gallery offers special programs and classes.


Hours: 12:30 to 4:30 p.m. Monday through Friday. Or by appointment.  
Information: (785) 472-5658.

**Ellsworth Municipal Golf Course** —

Ask any golfer. This is one of the finest nine-hole golf courses in central Kansas. A pro shop offers beverages and light snacks.  
Information: (785) 472-4236.

**Ellsworth Historical Plaza Walking Tour**

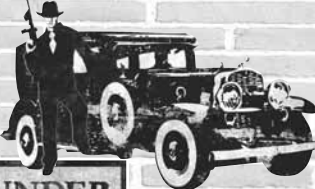
—  
Sample the flavor of Ellsworth’s cattle town past as you stroll the plaza area, where the drovers of the 1860s delivered their cattle for shipment to other parts of the country. The history of this time is told through a series of silhouettes, most of them modeled after local residents.



# PRETTY BOY FLOYDS

210 N. Douglas + Ellsworth, KS  
785-472-2183  
Entrance in the alley behind Ellsworth Village Mall

Serving appetizers, salads, certified angus beef, desserts, and much more.  
Reservations highly recommended.  
785-472-2183  
Thurs., Fri., & Sat. - 5 - 8:30 p.m.



**PREMIUM DINING 6FT UNDER**




**One location, different hours**

Open bowling Fridays, Saturdays, & Sundays  
May 16 - August 11

**Closed July 4th**

Open every day this summer!  
HOURS: Sun. - 4 - 9 | Mon. & Tues. - 4 - 9:30  
Wed. - 11 - 9:30 | Thurs. - 11 - 2 and 4 - 9:30  
Fri. & Sat. - 11 - 10



Lincoln & Main  
Ellsworth, KS  
785-472-5571




**Americas Best Value Inn**  
by Vantage

**Andy Bhakta**  
Manager

**Garden Prairie Inn**  
1414 Foster Road  
(Hwy. Jct. 140 & 156)  
Ellsworth, KS 67439

Phone: 785-472-3116  
Fax: 785-472-5703

Reservations: 888-315-2378 + [www.AmericasBestValueInn.com](http://www.AmericasBestValueInn.com)



## ELLSWORTH SERVICE CENTER

We also do repairs  
FULL SERVICE REPAIR GARAGE  
954 Hwy 156 • Ellsworth, KS 67439  
800-491-3157 or 785-472-3157



# Ellsworth-Kanopolis Calendar of Events

- Summer 2016**
- ♦ Farmers Market - 8-11:30 a.m. - with homemade goodies, fresh farm produce, crafts and more. *Saturday mornings starting June 4 through Labor Day weekend, Cowtown Plaza, Ellsworth*
- June 4**
- ♦ All City Wide Garage Sales
- June 10**
- ♦ Ellsworth Cancer Fund Triathlon, 6 p.m.-12:30 a.m., Shanelc Field Football Stadium, Ellsworth. Honoring those that have endured cancer's cruel sting. Games, food, walking, luminaries.
- June 25**
- Events at Ellsworth Recreation Complex unless otherwise noted.
- ♦ Star Spangled Spectacular, 6-11 p.m., Food, activities for kids and adults, fantastic fireworks display. Fun for the entire family.
  - ♦ 17th Annual Run for the Soul Motorcycle Run
  - ♦ Old Iron Classics, Customs & Cycle Show
  - ♦ Scout Spirit Freedom Sprint - 5K Race
  - ♦ Pheasants Forever Shoot
  - ♦ Craft Show
- July 8-9**
- ♦ Fort Harker Days - Kanopolis
- July 24-28**
- ♦ Ellsworth County 4-H and Open Class Fair.
- July 28-30**
- ♦ After Harvest Czech Festival - Wilson
- August 19-20**
- ♦ Cowtown Days, Ellsworth. 5K run, parade, food, live entertainment, reenactment of "Shooting of Sheriff Whitney", beer garden, games, dancing, State Sanctioned Tractor Pedal Pull, cowboys and dance halls girls.
  - ♦ El-Kan Western Riders Rodeo Friday and Saturday nights.
- August 27**
- ♦ All "FORE" the Chamber Golf Tournament - Ellsworth
- September 3**
- ♦ St. Ignatius Fiesta, Kanopolis. Homemade Mexican food, food stands, raffles, Bingo - Supports St. Ignatius Catholic Church.
- October 8**
- ♦ 2nd Annual Throw for the Soul Disc Golf Tournament - Ellsworth
- November 28**
- ♦ Follow The Star, Ellsworth. Event kicks off the Christmas season in Ellsworth. Parade with live animals, Live Nativity Scene. Santa visits and stores stay open late.

For more information, go to [www.goellsworth.com](http://www.goellsworth.com)



Historic  
**ELLSWORTH-KANOPOLIS**  
AREA CHAMBER OF COMMERCE  
114 1/2 Douglas • Ellsworth, KS • 785-472-4071



# OROZCO'S PORTALES

*Fine Mexican Food  
Dine in or carry out*

117 N. Kansas Ave.  
Kanopolis, KS

**785-472-4226**



*We carry sizes  
from 2 to 3x!  
Follow us on Facebook!*

## Classy Lady Boutique

*Women's Clothing Store*

220 N. Douglas • Ellsworth, Kansas • 472-2277  
9 a.m. - 5:30 p.m. - Mon. - Fri.  
9 a.m. - 1 p.m. - Sat.



**Hallmark**  
GOLD CROWN STORE  
Over 30 years

*~ Your Hallmark Gold Crown Destination ~*

We honor all Gold Crown certificates, gift cards & coupons

• Keepsake Ornaments • Gifts • Jewelry • Office Supplies

### ROBSON'S CARD & GIFT SHOP

211 North Douglas • Ellsworth, KS • 785-472-3931 • robsonscardgift.com



## Guest Ranch Lodge

Party Room  
For Reunions/Events  
Call 785-472-4850

Located 9 miles east of  
Ellsworth on Hwy 140,  
1 mile south on 24th Rd  
to 2366 Ave K - Brookville, KS

## Full Service Convenience Store!



*Ampride sandwiches,  
made the way you  
like, for breakfast,  
lunch or dinner.  
Dine in or carry out!*



# AMPRIDE

Hwy 156 & Kunkle Dr. • Ellsworth, KS • 785-472-4782  
24 Hour Gas Service  
Hours: Mon - Sat 5:30 am to 9 pm / Sun 7 am to 8 pm

## Ice cold drinks from Finke's Liquor can help you beat the dog days of a Kansas summer!



**Stop in to  
check out our  
beer cave  
today!**



**FINKE'S**  
510 Kunkle Dr Ellsworth, Kansas 785-472-4871  
Retail Liquor  
Est. 1987

## BUFFET

7 Days a Week!

Mon. - Sat. - \$6.49  
Seniors & Kids - \$5.49  
Sunday Lunch & Wed. evening - \$7.49  
Seniors & Kids - \$6.49




**Pizza Hut®**  
Dine-In, Carryout  
512 Kunkle, Ellsworth  
785-472-3134



*“We care for your family like one of our family.”*

- 35 bed skilled nursing home
- Non-profit, locally owned and operated
- We accept Medicare, Medicaid, private pay, veterans, and hospice
- Christian focused, resident centered
- Wide variety of activities and services
- We offer respite care, adult day care and short term stays

# Riverview Estates

MARQUETTE, KANSAS

202 S. Washington, PO Box 158 • Marquette, KS 67464  
 Ph.: 785-546-2211 Fax: 785-546-2035  
[riverviewestatesks.com](http://riverviewestatesks.com)



## Join Us On The Patio This Summer!

- Book your family reunions, catering, and business meetings
- Farmhouse Luncheonette - 6 days a week
- Sunday Brunch 11 a.m. - 2 p.m.
- Sample Room Open - Food Service - 5 - 9 p.m.
- Charlie & Elmo’s Whiskey Bar open 6 nights a week in the Sample Room
- Ribs & Bierocks to go to take to the lake



*Midland*  
 RAILROAD HOTEL  
 EST. 1899



Midland Railroad Hotel | [midlandrailroadhotel.com](http://midlandrailroadhotel.com)  
 414 26th Street | Wilson, KS | (785) 658-2284

# Czech out Wilson and Wilson Lake

**N**obody does Czech better than Wilson, a town with roots that grow deep into the Czech culture. Each year, on the last weekend in July, Wilson stages its annual After-Harvest Czech Festival with a huge small-town parade, live music, Czech dancers and food and numerous other activities. As always, the 2016 festival, July 28-30, also will showcase the crowning of the Miss Kansas Czech-Slovak Queen. Kansas is the only state to have three national queens in a row. Anna Hand, now a student at Fort Hays State University, was the most recent in 2013.

Call Wilson City Hall, (785) 658-2272, for more festival information.

Wilson also has the benefit of being close to Wilson Lake, which some consider the most beautiful man-made reservoir in Kansas.

Other attractions:

#### Made From Scratch —

Owner Jayne Reilly serves a great cheeseburger. But there's much more on the menu, including the meals she cooks in the smoker made by her husband, pan fried chicken on Sundays and pies and kolaches,

a Czech fruit pastry, daily. Our favorite pie is the mixed berry. And did we mention homemade ice cream?

Hours: 7 a.m. to 2 p.m. Monday-Wednesday; 7 a.m. to 8 p.m. Thursday-Saturday; and 7 a.m. to 4 p.m. Sunday.

Information: (785) 658-3300.

#### Wilson Foods —

It's a short trip between Wilson and Wilson Lake and Wilson Foods has the perfect food items for a weekend at the lake or to take home.

Beef summer sausage. Ring garlic bologna. Brats. They're all homemade.

Hours: 8 a.m. to 7 p.m. Monday through Saturday; 9 a.m. to 6 p.m. Sunday.

Information: (785) 658-2120.

#### Midland Railroad Hotel

This beautifully restored landmark provided the backdrop for parts of the 1973 movie, "Paper Moon," with Ryan and Tatum O'Neal. The Sample Room Tavern in the hotel basement is open from 5:30 to 10 p.m. Tuesday through Sunday. Dining available 5:30-8:30 p.m.

The Midland also has outdoor facilities for weddings and other events and special

wine dinners by reservation.

Information: (785) 658-2284.

**Kansas Originals Market and Gallery**, north of Wilson on Kansas Highway 232, also known as the Post Rock Scenic Byway, which links Wilson and Lucas.

Many of the state's best artists and crafters have their work for sale here. If you can't find a gift at Kansas Originals, you're not serious about buying.

Hours: 9 a.m. to 6 p.m. Monday through Saturday; 11 a.m. to 6 p.m. Sunday.

Information: (785) 658-2602.

#### Grandma's Soda Shop

Jerry and Virginia Florian opened this shop in July 2012 in downtown Wilson so the town's youngsters would have a place to go. You don't have to be a youngster to enjoy the stone-oven homemade pizza served by the Florians or the soups and drinks delivered to customers from the old-fashioned soda fountain. Bierochs and kolaches, a Czech pastry, also are on the menu.

Hours: 11 a.m. to 9 p.m. Sunday through Friday, 9 a.m. to 9 p.m. Saturday.

Information: (785) 658-2200.



Wilson is the site for the annual After-Harvest Czech Festival, which features the Czech Dancers. Food also is a town tradition. Enjoy a homemade bierock, bottom right, at the Midland Railroad Hotel. At top right is one of the water features in Wilson's popular new spray park.



Located in Wilson the Czech Capital of Kansas  
And CLOSE TO BEAUTIFUL Wilson Lake

### Wilson Wine & Spirits

I-70 Exit 206 to Wilson, KS  
521 27th Street  
785-658-3431

Mon - Fri: 11 am - 10 pm • Saturdays: 10 am - 10 pm  
Sundays: 12 pm - 6 pm

Open every day except  
Easter/Thanksgiving/Christmas



*Homemade cooking at its finest*

Bierocks, Homemade Ice Cream,  
Salad Bar, Pies, Cakes, Kolaches and  
Cinnamon Rolls.



### Made From Scratch

527 27th Street • Wilson, KS • 785-658-3300  
New Hours: Mon. - Wed. 7 a.m. - 2 p.m.,  
Thurs. - Sat. 7 a.m. - 8 p.m. • Sun. 7 a.m. - 4 p.m.

- Kolaches
- Bierochs
- Cinnamon Rolls
- Ice Cream
- Ham Pockets
- Stone Oven Pizzas

*Our pizzas are handmade to order  
All our hamburgers are  
fresh black Angus beef!*

Hours.: Sun. - Fri.  
11 a.m. - 9 p.m.  
Sat. 9 a.m. - 9 p.m.



**Grandma's Soda Shop & Diner**  
2524 Ave. E • Wilson, KS • 785-658-2200

*All Sodas are  
made the  
old fashioned  
way!*



*FINEST FRESH MEAT DEPARTMENT IN THE AREA!*  
See Us For Those Delicious Homemade Sausages  
"Made With You In Mind"

*Czech Out Our...*

- Beef Summer Sausage
- Ring Garlic Bologna
- 5 varieties of Snack Sticks
- Our own homemade Brats

*Czech out our  
Hardware  
Department*

### WILSON FOODS

2546 Ave. E • Wilson, KS 67490  
785-658-2120  
OPEN: Mon - Sat - 8 a.m. - 7 p.m./ Sun. 9 a.m. - 6 p.m.



Wilson State Park • Sylvan Grove, KS 67481

### 785-658-2392

Terry and Roberta Favinger, owners



Bombardier  
Recreational  
Products



We also work on:



Full-Time Certified Mercury Mechanic • Full Service Fuel Dock  
Rental Slips • Boating Accessories • Camper Storage • Pop and Beer  
Ice and Snacks • Live Bait • Fishing Tackle • Winterize Boats, Campers & Jet Skis

# GRASSROOTS ART CENTER

Self-taught,  
Recycled,  
Outsider Art

*Ordinary People  
Extraordinary Art*

*Tour includes  
Deeble Rock Garden  
and Garden of Isis*

Admission Charged  
Main Street, Lucas, KS  
www.grassrootsart.net  
785-525-6118



## Lucas Area Community Theater

### ADMIT ONE

Family Friendly Theater  
Now Showing in Digital & 3D  
in Lucas Kansas at 116 S. Main

Movies at 7pm on Fri. & Sat.,  
5pm on Sun. Fresh Popcorn!

Movie Schedule at 785-525-7747  
www.lucastheater@yahoo.com  
Watch for other Events in the Theater

ADULT \$5 (3D - \$6)

CHILD \$4 (3D - \$5)



## EXPECT THE UNEXPECTED IN LUCAS KS AT THE GARDEN OF EDEN @ KANSAS & 2ND



S. P. DINSMOOR'S CABIN HOME &  
GARDEN OF EDEN



ROY AND CLARA  
MILLER'S PARK

Contact @ 785-525-6395 or www.garden-of-eden-lucas-kansas.com for information & tours.



LUCAS! CREATING OUR OWN KIND  
OF HISTORY, ONE ARTIST AT A TIME.



### Lucas is the Grassroots Art Capital of Kansas located at the North end of the Post Rock Scenic Byway

- |                               |                                      |
|-------------------------------|--------------------------------------|
| Garden of Eden                | Grassroots Art Center                |
| Miller's Park                 | Brant's Meat Market                  |
| World's Largest Things        | Czech Heritage Mural                 |
| Aunt Certie's Art & Antiques  | Deeble House & Yard                  |
| Bowl Plaza Public Restroom    | Hobby House & Gift Shop              |
| Fork Art Park                 | Da Da Muse'um                        |
| Grandma's Attic               | Lynn's Glass Works & Laser Engraving |
| Hair Designs by Kim & Maryssa | Bluestem Quarry & Stoneworks         |
| World's Largest Travel Plate  | Possibilities                        |

Lucas Chamber ~ 785-525-6288 ~ lucascoc@wtciweb.com ~ www.LucasKansas.com

# WILSON AFTER HARVEST CZECH FESTIVAL

"Home Grown (DOMÁČÍ)"

JULY 28-29-30 2016 WILSON KANSAS

- |                    |   |                           |
|--------------------|---|---------------------------|
| Czech Egg Painting | Authentic Czech Food & Music                    | Remote Control Demo Derby |
| Ice Cream Social   | Talent Show                                     | Czech Dancers             |
| Ruckus Creek Band  | Joe Dolzal Band                                 | Turtle Races              |
| Social Garden      | 5K Walk/Run                                     | Rides & Games             |
| Arts & Crafts      | Miss Czech-Slovak KS Pageant & Princess Pageant | Toilet Bowl Races         |

# Kansas Originals

## • Fine & Folk Art • Exquisite Crafts

Wheat Weaving, Copper & Brass, T-Shirts, Sweatshirts and Caps, Pottery, Quilts, Homemade Soap, Candles, Hand-blown Glass, Wood, Paintings, Limestone Sculptures, Photography

Kansas Made - Kansas Grown!

## • Gourmet Foods

Jellies, Salsas, BBQ Sauces, Honey & Bee Pollen, Buffalo & Llama, Sausage, Elderberry, Flour & Mixes, Popcorn, Fudge, Candy & Snacks, Sunflower Butter Spread

Stop by on Your Way to Lake Wilson!

See Our New Website! [www.kansasoriginals.com](http://www.kansasoriginals.com)

10% off any one item. Valid through Sept. 30, 2016  
Limit 1 per family



Topeka Travel Center  
On the Turnpike  
5 miles E. of Topeka

I-70 Exit 206, Wilson  
785-658-2602  
email: kom@ksmade.com

Operated by the Post Rock Opportunities Foundation  
a 501(c)3 not-for-profit corporation.

Experience

# EVERYTHING

We have to offer!



This establishment is an equal opportunity employer and provider.

Below, the Garden of Eden at Lucas — there's no place quite like it. At right, a family enjoys the natural beauty of Wilson Lake.



## 'Weird' is the word in Lucas

There's nothing wrong with being weird in Lucas. In fact, the Russell County community of a little more than 400 encourages weird.

Take the town's most recent project — the First Flush. The event celebrated "the most outrageous public rest room between either coast, and probably several other coasts." And it's right here, in Lucas, where visitors from almost every state and many foreign countries have come to enjoy the town's unique grassroots atmosphere.

What student in Central Kansas hasn't hopped on a school bus for a field trip to the **Garden of Eden**, a concrete wonder that makes the town's public restroom seem almost understated?

Lucas may be the most original town in Russell County, but it isn't the only community with things to do and people to see.

Russell's annual **Freedom Festival** is a star spangled tribute to the nation's birth. It starts with a barbecue and ends with fireworks. The **Russell County Free Fair** later in the month also is a big deal.

Russell holds the distinction of being the former home of two retired U.S. senators. Bob Dole, former Senate majority leader, unsuccessfully challenged Bill Clinton for

the White House in 1996. The late Arlen Specter, who lived in Russell as a boy, represented Pennsylvania for many years.

Other attractions:

**Fossil Station Museum, Russell** — This imposing building was constructed in 1907 of native limestone or "post rock" to house the sheriff and county. Today the museum contains the early history of Russell County, including a tribute to "Heartland Politics."

Hours: 11 a.m. to 5 p.m. Monday through Saturday; 1 to 5 p.m. Sunday. Summer hours.

Information: (785) 483-3637.

**Garden of Eden, Lucas** — Samuel Perry Dinsmoor, a retired schoolteacher, Civil War veteran, farmer and populist politician began building the Garden of Eden and Cabin Home in 1907 at the age of 64. For 22 years he fashioned 113 tons (2,237 sacks) of cement and many tons of limestone into his unique "log" cabin with its surrounding sculptures. It is a true example of grassroots art. The Garden of Eden is listed as one of the 8 Wonders of Kansas.

Hours: 10 a.m. to 5 p.m. daily May through October.

Information: (785) 525-6395.

**Bunker Hill Cafe**, downtown Bunker Hill — From catfish to steak, I've never had anything here that wasn't outstanding. Call for hours and reservations: (785) 483-6544.

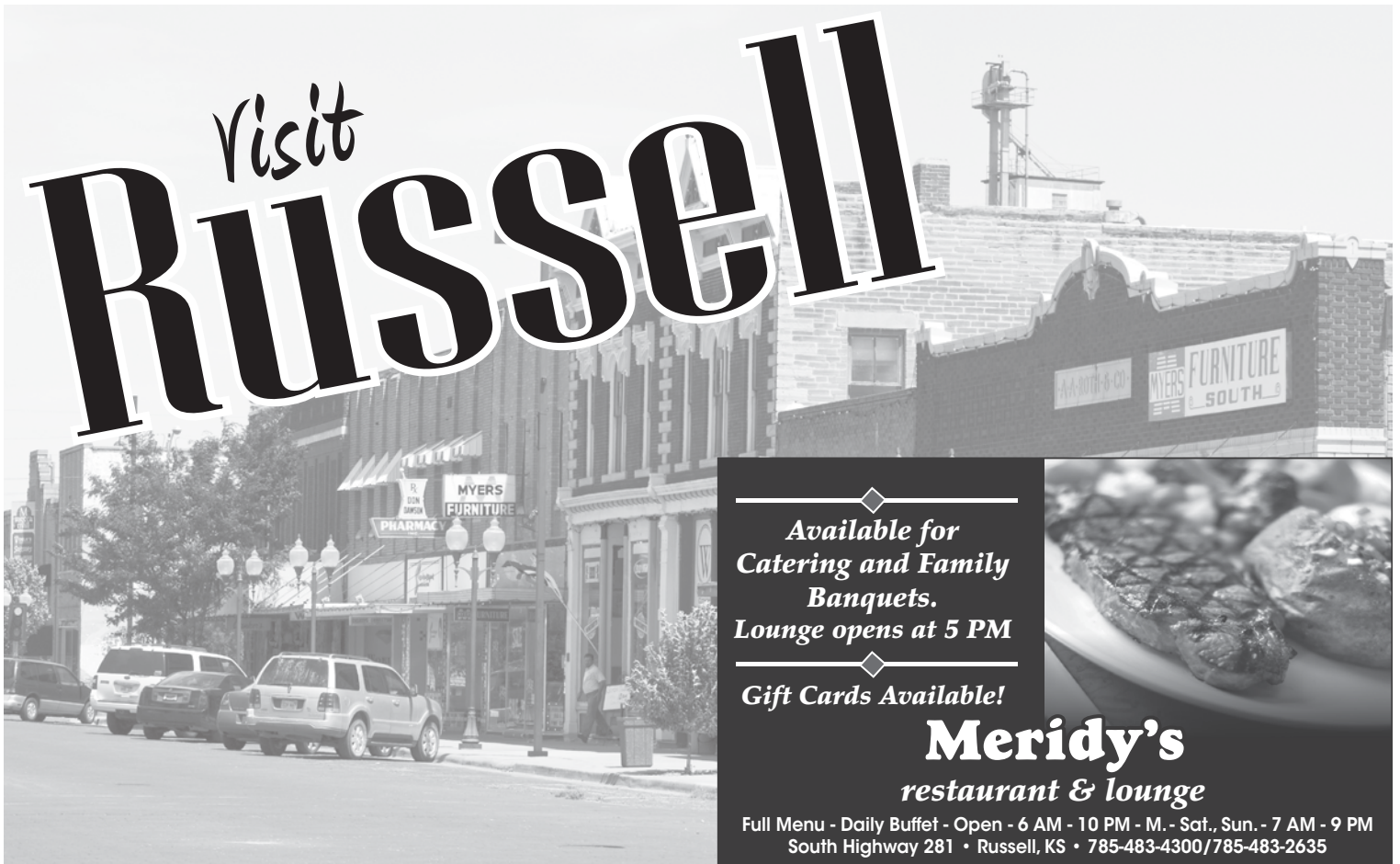
**Grassroots Art Center, Lucas** — This museum has been open since 1995 and occupies three turn-of-the-century native limestone buildings on the town's main street. You'll find the works of individuals, who like Samuel Perry Dinsmoor, developed creative environments as an expression of their innermost dreams and visions.

Hours: 10 a.m. to 5 p.m. Monday through Saturday; 1 to 5 p.m. Sunday. Information: (785) 525-6118.

**Deines Cultural Center, Russell** — This downtown attraction is a non-profit educational resource that enriches local cultural life by providing artistic exhibits and activities, musical events and concerts, educational and historic programs. Free admission and accessibility to those with disabilities. Open Tuesday through Sunday.

Information: (785) 483-3742.

# Visit Russell



Available for  
Catering and Family  
Banquets.  
Lounge opens at 5 PM

Gift Cards Available!



## Meridy's restaurant & lounge

Full Menu - Daily Buffet - Open - 6 AM - 10 PM - M. - Sat., Sun. - 7 AM - 9 PM  
South Highway 281 • Russell, KS • 785-483-4300/785-483-2635

## FOSSIL CREEK hotel & suites

- Variety of rooms including fireplace/whirlpool suites, king single and queen double guest rooms
- Spacious indoor recreation area - pool, whirlpool & sauna
- Complimentary enhanced continental breakfast with made-to-order omelette bar
- Wireless internet
- Children 12 and under stay free with an adult
- Dole-Specter Conference Center for all events, big or small!

Present this ad  
to receive  
**10% OFF** your stay!

*Based on availability.  
Not valid with any  
other offer*

1430 S. Fossil • Russell, KS 67665 • 785-483-4200 • 877-866-4630  
russell.ks@eaglecom.net • www.fossilcreekhotel.com

Proud to serve rural and city members in the  
following counties:

ELLSWORTH (Includes Cities of Wilson and Kanopolis), RUSSELL,  
LINCOLN, OSBORNE (Includes City of Alton), MITCHELL, SMITH,  
JEWELL, REPUBLIC, CLOUD, WASHINGTON,  
(Phillips, Rooks, Clay, Ottawa, Saline & Barton)



3075B US HWY 24  
Beloit, KS 67420  
800-530-5572

## Shop, Dine, & Stay....

# RUSSELL COUNTY



Antique Shops • Unique Eateries • Epic Outdoor Thrills

Russell County Economic Development & CVB  
(785) 483-4000 or (877) 830-3737 • www.russellcoks.org

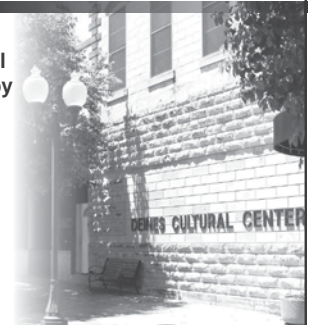


## DEINES CULTURAL CENTER

Located in Russell, Kansas, the Deines Cultural Center is a non-profit educational resource that enriches local cultural life by providing artistic exhibits and activities, musical events and concerts, educational and historic programs.

Shannon Trevethan - Director  
820 North Main Street  
Russell, KS • 785-483-3742  
www.deineculturalcenter.org

Hours: Noon - 5 pm - Tues. - Fri.  
1 - 5 pm - Sat. & Sun.





**Fort Harker Days**, with activities for the entire family, celebrates the western heritage of Kanopolis, which is built on land that in the mid-1800s was home to Fort Harker, one of several federal outposts on the dangerous Smoky Hill Trail across Kansas. Every year the town comes together for a parade, turtle races, left, and other activities to mark not only its western roots, but also the Hispanic heritage that remains an important part of the community's character. This year's Fort Harker Days will include the 14th annual Fun Run, which consists of a four-mile run and a two-mile walk/run.

## Treat yourself to a movie in Kanopolis

**K**anopolis celebrates the 150th anniversary of Fort Harker this year with **Fort Harker Days** July 8. Parade. Turtle races. Carnival. Street Dance. It will be two days to remember.

Kanopolis is one of the few towns left with a drive-in. **Kanopolis Drive-in** was opened by Tony Blazina in 1952 and temporarily closed in 2006. The drive-in has passed to a new generation of owners, from the Blazina family to Josh and Amanda Webb. Josh grew up in the shadow of the drive-in and saw movies there regularly with his father. The drive-in is open Friday, Saturday and Sunday nights and features a digital projector.

Information: (785) 472-4786.

### **Orozco's Portales —**

Our favorite is the smothered sancho with extra chili. Others rave about the huevos rancheros. Orozco's has more than 20 years of experience making some of the best Mexican food in Kansas.

Hours: 6 a.m. to 8 p.m. Tuesday-Saturday, 8 a.m. to 2 p.m. Sunday. Closed Monday.

Information: (785) 472-4786.

### **Fort Harker Museum —**

Kanopolis is built on the site of Fort Harker, a U.S. Army post that housed infantry and cavalry troops involved in the Indian Wars from 1867 to 1872.

The Ellsworth County Historical Society operates this museum, which is housed in the former **Fort Harker Guardhouse**. Fort Harker was a major supply post after the Civil War. It was home to many western legends, as well as a few best forgotten. The society also has restored the **Fort Harker Junior Officer's Quarters** and owns the **Commanding Officers Quarters**, which is used for special events.

Hours: Special tours.

Information: (785) 472-3550.



**Fort Harker Guardhouse Museum.**



As the carnival rides spin in the background, Kanopolis' former mayor, Cherie Sauers, and her husband, Marty, stop for a photo.

## *Ghost tours offer new twist to local tourism*

The Ellsworth County Historical Society, working with Old School Paranormal of Hays, is pleased to announce Haunted Fort Harker Ghost Tours. The first of the anticipated quarterly tours will be July 9. Hours are from 8 p.m. to midnight.

Participants will receive instruction on paranormal investigations and then join in on an actual paranormal investigation and ghost hunt of historic Fort Harker. Fort Harker was an active frontier fort on the Kansas prairie from 1866 to 1872. Famous generals such as Sherman,

Custer and Hancock walked the parade grounds of Fort Harker. Four of the originals buildings remain.

Tours are limited to 12 participants 18 years of age and older.

Information:  
www.oldschoolparanormal.com

Animals are the attraction at the Rolling Hills Wildlife Adventure west of Salina. To the right is Salina's Stiefel Theatre, which features live performances in a historic setting.



# Salina: Rockin' Arts & Entertainment

One of the best events in the state has to be Salina's annual Smoky Hill River Festival.

This year's festival is June 9-12 in Oakdale Park, adjacent to the Bicentennial Center. On the program are the Festival Jam starting at 6 p.m. Thursday, June 9, and fine arts and Four Rivers craft shows over the weekend.

There's also a special area for children and musical performances throughout the last three days of the festival. And that's not all. More than 30 festival food vendors will offer crab cakes, coconut shrimp on a stick, homemade ice cream and much more.

The Smoky Hill River Festival, which grew out of Salina's bicentennial celebration in 1976, is a great way to meet old friends and make new ones.

Information: (785) 309-5770.

Other attractions:

**Kenwood Cove Aquatic Park**

For the sixth year, the waves are the thing this summer in Salina. The town's Kenwood Cove Aquatic Park opened for business as the area's newest water adventure in 2010. Attractions include a 20-story Blue Cyclone tubular slide, a Purple Twister with a 250-foot drop, the Green Monster, a 54-inch tube slide that drops almost 320 feet and the Tsunami Swirl Slide, which starts with a 73-foot plunge at a 45 degree angle before dropping you into the vortex of a green-and-purple tornado.

Information: (785) 309-5765.

**Rolling Hills Wildlife Adventure** — This first-class zoo and wildlife museum have to be seen to be believed. Salina businessman, the late Charlie Walker, stocked the proper-

ty with 85 species in their natural habitats when possible. The museum opened in 2005 and features scenes such as the Great Wall of China. What a great way to spend the day.

Information: (785) 827-9488.

**Cozy Inn**, 108 N. 7th — When former Salina residents come home, this is where they go. Buy 'em single or by the sack, the Cozy has been serving hamburgers — no cheeseburgers, please — since 1922. The Cozy Inn features a counter with six stools. It's not unusual to have the stools filled and a row of customers lined up behind them, waiting for their to-go orders. Another hint if you visit the Cozy — don't ask for a burger without onion. Onion is part of the charm of a Cozy burger.

Information: (785) 825-2699.



**A visitor to the Smoky Hill River Festival shops at the Salina event, which this year celebrates its 40th anniversary. Artists and crafters from across the United States attend.**



8th & Iron, Salina 785.309.5776  
www.smokyhillmuseum.org

# SMOKY HILL RIVER FESTIVAL

## CELEBRATING 40 YEARS



### COME JOIN IN THE FUN!

- Four Live Stages
- Fine Art & Craft Shows
- Outdoor Art
- Artyopolis Kid's Area
- Fun Festival Food
- All in a Shady Park

June 9-12 • Oakdale Park • Salina, KS  
[riverfestival.com](http://riverfestival.com)



### Make a splash at Kenwood Cove!

Spend the summer at Kenwood Cove!  
 Salina's premier aquatic park features 1,400 feet of slides, a children's play area, and fun attractions for everyone!

Hours  
 Open daily all summer  
 Monday-Saturday 12:30pm-7pm  
 Sunday 12:30pm-6pm

Daily Admission Prices  
 Children ages 0-2: Free  
 Children ages 3-17: \$3.50  
 Adults ages 18-61: \$5.50  
 Seniors ages 62+: \$2.50



# YOUNIQUE

## Memories

Truly something for everyone awaits – with our strong cultural arts vibe featuring public art, museums, art center and cinema, theatre, music and festivals; family fun at the zoo, water park, golf course and parks; local and regional dining experiences and warm hospitality!

[VisitSalinaKS.org](http://VisitSalinaKS.org)  
 877.425.4625

# KKOA Leadsled Spectacular

## July 28-31

Salina's Oakdale Park • [www.kustomkempsofamerica.com](http://www.kustomkempsofamerica.com)

Enjoy the...

## Sculpture Tour SALINA

Vote for your favorite sculpture now through Dec. 31, 2016

Pick up a brochure/ballot at the downtown merchants, or at every downtown crosswalk.

Info at [www.sculpturetoursalina.com](http://www.sculpturetoursalina.com) or Phone - 785-827-9310, ext . 138

# Abilene still likes Ike and its history

**A** bilene is awash in history and activities for the entire family. It's a former cattletown with strong bonds to World War II and the 1950s through its favorite son, Dwight D. Eisenhower. In fact, the centerpiece of the Abilene experience is the **Eisenhower Presidential Library, Museum and Boyhood Home**, which pays tribute to the WWII general and U.S. president.

On June 1, 2013, the library and museum opened a special exhibit, **World War II Remembered: Leaders, Battles and Heroes**. The exhibit kicked off a three-year commemoration of the war's pivotal events. Programs will continue through December 2016, marking the 70th anniversaries of the war and its aftermath.

World War II Remembered focuses on the personal stories of unsung heroes and the lesser-known events of the war. Public and educational programs will combine with the exhibit to tell these stories. Subjects include the major theaters of war, special units, including the Tuskegee Airmen and Native American Code Talkers and the Ritchie Boys, Jewish refugees from Hitler's Germany who returned to Europe as U.S. soldiers.

Other activities include the **Symphony at Sunset Annual D-Day Commemorative Concert** with the Salina Symphony the first Saturday in June on the presidential library grounds.

Hours: 8 a.m. to 5:45 p.m. daily June and July.

9 a.m. to 4:45 p.m. other months.

Information: (785) 263-4751.

Other attractions:

**Dickinson County Heritage Center** — Abilene history shares the spotlight with a restored 1901 C.W. Parker Carousel.

Hours: 9 a.m. to 4 p.m. Monday-Friday; 10 a.m. to 8 p.m. Saturday; and 1 to 5 p.m. Sunday.

Information: (785) 263-2681.

**Abilene & Smoky Valley Railroad** —

This ten-mile excursion train offers rides May through October. Features a 100-year-old wooden, restored coach/diner car and gondola cars. Pulled by a 1945 ALCO S1 diesel engine that was originally designed for WWII submarines. One week-end each month, the excursion train is pulled by a restored 1919 Baldwin steam locomotive. The railroad is based out of the 1880' Rock Island Depot, recently added to the National Register of Historic Places. Available for group charters.

Information: (785) 263-1077.

**Burning Tree Art, Old Abilene Town** —

Jo Schwartz is an internationally known artist that burns unique one of a kind art on wood. Her gallery is open May through October.

Hours: 9 a.m. to 4 p.m. Wednesday through Saturday and 1 to 4 p.m. Sunday.

Information: (785) 479-6880.

**C.W. Parker Carousel** —

This complete, hand-carved, working carousel was manufactured in Abilene at the turn of the century by the C. W. Parker Amusement Co. Ride on one of the 24 completely restored horses or four chariots. One of only 18 National Landmarks located in the state of Kansas. Named as one of the 8 Wonders of Kansas Customs by the Kansas Sampler Foundation. The carousel is part of the Dickinson County Heritage Center, which also features the Museum of Independent Telephony.


Information: (785) 263-2681.

**Great Plains Theatre** —

Kansas' premier professional theatre company features productions by professional actors coming from across the United States.

Information: (785) 263-3000.

*Visit the Historic Seelye Mansion*




THE HISTORIC  
*Seelye Mansion*  
ABILENE, KANSAS

1105 N. Buckeye • P.O. Box 337  
Abilene, KS 67410

785-263-1084  
seelyemansion@yahoo.com  
www.seelyemansion.org

**Dickinson County Historical Society**  
**Heritage Center Museums**  
412 S. Campbell • Abilene, Kansas • 785-263-2681


Ride the C.W. Parker  
**Carousel**



9-4 MONDAY - FRIDAY  
10-8 SATURDAY  
1-5 SUNDAY  
(Memorial Day - Labor Day)  
www.heritagecenterdk.com

**MUSEUM OF INDEPENDENT TELEPHONY**





**JEFFCOAT**  
PHOTOGRAPHY STUDIO MUSEUM

Open Thursday 9:30 am - 5:30 pm  
and Friday and Saturday 8:30 pm - 4:30 pm

**321 N. Broadway**  
**Abilene, KS 67410 • 785-263-9882**  
jeffcoatstudio@att.net • Find us on Facebook

# Marquette delivers charm and history

**M**cPherson County was organized in 1870 and named in honor of Major-General James B. McPherson, United States Volunteer, who was killed in battle at Atlanta, Ga., July 22, 1864. He was the highest ranking Union officer to die on the battlefield during the Civil War. A life-size bronze likeness of General McPherson, located in Memorial Park, was dedicated July 4, 1917.

For our purposes, this page focuses on the towns of Marquette, Lindsborg and McPherson, the county seat. However, there are other small communities worth the extra miles to visit.

Roxbury, for instance, joins Marquette and Lindsborg on the Prairie Trails Scenic Byway, which used to go across the dam at Kanopolis Reservoir before stopping at the intersection of Kansas Highways 141 and 140. The byway was recently extended to cut through the Smoky Hills to Carneiro, Kanopolis and Ellsworth.

Like its neighbors, Marquette knows how to throw a party — Thunder on the Smoky motorcycle rally in May, fireworks to cele-

brate July 4, the rodeo in August and Autumn in the Valley in the Fall.

New to the list of activities is Vintage In The Valley in downtown. The one-day sale features treasures from more than 40 vendors, live music and street food. The celebration of used is organized by the Rusty Tin Boutique & Vintage, a clothing boutique that also offers vintage and repurposed items.

Call City Hall, (785) 546-2205, for dates and schedules.

**Kansas Motorcycle Museum** — This is a great place to learn about the adventure of racing. The museum is devoted to Marquette's racing legend, Stan Engdahl. Information: (785) 546-2449.

**Marquette Downtown** — It's almost impossible to mention Marquette without talking about its downtown. Volunteers painted the ornate buildings from the 1880s and 1890s, planted trees and flowers and generally made this one of the most attractive downtowns in the region.



**Hanson-Lindfors Mansion**

**Hanson-Lindfors Mansion**, 211 E. 5th — This beautifully restored 1888 home has 19 rooms and an interesting history. It has been on the National Register of Historic Places since 1982.

Hours: Appointment only.

Information: Allan and JoAn Lindfors, (785) 546-2348.

**Marquette Museum Complex** — Includes the Marquette Museum, Range School Museum and Depot Museum.

Hours: Weekend afternoons April through October.



# Marquette, Kansas

*"One of Kansas' Best Kept Secrets"*

Whether you're going to or coming from Lake Kanopolis, stop in Marquette and visit these historic sites –



**Hanson Lindfors Mansion**  
 211 East 5th  
 (By Appointment Only)  
 Marquette, Ks  
 785-546-2348

**Marquette Museum Complex**  
 203 N. Washington  
 (Main Street)  
 Includes Marquette Museum, Range School Museum and Depot Museum,  
 Open weekend afternoons - April through October.



**Kansas Motorcycle Museum**  
 120 Washington  
 (Main Street)  
 Marquette, Ks  
 Open Daily

Visit "Beautiful Downtown Marquette" –  
 Unique gift shops, art galleries & boutiques!  
 Visit the website for Marquette's Free Land Program  
 at [www.freelandks.com](http://www.freelandks.com)

## Coming Events

- May 21** - Thunder On The Smoky Motorcycle Rally and Flat Track Races
- June 4** - Vintage in the Valley and city wide garage sales
- August 5&6** - Smoky Valley Saddle Club Rodeo and Dance
- August 6** - Rodeo Run
- September 10** - 11th Annual Pedal Power Bicycle Tour

**M F MARQUETTE FARMERS STATE BANK**  
**S B "The Bank of Personal Service"**  
 205 North Washington • P.O. Box 39 • Marquette, KS 67464 • 785/546-2292  
 Member FDIC / Each Depositor Insured to \$250,000 by FDIC  
[www.mfsb.com](http://www.mfsb.com)

# Visit HISTORIC MARQUETTE



**KANSAS MOTORCYCLE MUSEUM**



**CITY SUNDRIES**

8 Miles West Of Lindsborg On K4, Along the Prairie Trail Scenic Byway!

**SHOP • DINE • ENJOY!**

<b>MAY 21</b>	<b>12TH ANNUAL THUNDER ON THE SMOKY MOTORCYCLE RALLY &amp; RACES</b> 10:00 am: Opening Ceremonies 2:00 pm: Races, 6 Miles South of Marquette
<b>JUNE 04</b>	<b>VINTAGE IN THE VALLEY</b> \$3 To Enter, Street Food, Music, 60+ Booths Antiques, Rusty Junk & Things That Need a Little Love
<b>JUNE 04</b>	<b>CITY-WIDE GARAGE SALE &amp; EMT PANCAKE FEED</b> 7:00 am: American Legion Pick up your garage sale map
<b>JULY 17 &amp; 21</b>	<b>FLAT TRACK MOTORCYCLE RACES</b> 7:00 am: Bike Breakfast at Ranch House Races at 2:00 pm: Corner of 5th and Pioneer, 6 miles south of Marquette
<b>AUG 05 &amp; 06</b>	<b>SMOKY VALLEY SADDLE CLUB RODEO</b> 7:00 pm: Rodeo Arena August 6: Rodeo Dance after the Rodeo
<b>AUG 06</b>	<b>RODEO RUN</b> 8:00 am: Downtown Marquette 5K Race, 1 Mile FunRun/Walk and Kids Short Course
<b>SEP 10</b>	<b>6TH ANNUAL PEDAL POWER BICYCLE RIDE</b> 10:00 am: Downtown Marquette 10, 33 or 46 Mile Bicycle Race

Find more events on the Marquette Chamber of Commerce Facebook page.  
 For info on business hours and other questions concerning Marquette, call the City of Marquette at 785-546-2205 & they will be glad to help you.



# Welcome to Marquette!

## Lookin' for a Fun, Clean Place to Swim?

Marquette City Swimming Pool at Marquette City Park is the place for you!

Pool Depth—3 feet to 11 feet  
Kiddie Pool—Ages 3 & Under

(Must be accompanied by an Adult!) - NO DIAPERS!

Two diving boards • Admission Fee Required

OPEN: Memorial Day Weekend to September 1, 2016

Mon-Tues-Wed-Thurs-Sat: 1:00 to 7:00 p.m. Fri: 1:00 to 6:00 p.m.

Sun: 2:00-7:00 p.m.

Lifeguards on Duty • Pam Morel, Manager  
Concession Stand • Bath House/Restrooms

(785) 546-2286



## On your way to Kanopolis Lake- Stop in Downtown Marquette!

### Piper's Fine Foods

Full Service Grocery Store

Fresh Meat & Produce, and Daily Specials from the BBQ Hut, Propane and Ice  
OPEN: Monday-Saturday 7:30 a.m.-7:30 p.m. • Sunday Noon-5:00 p.m.

(785) 546-2271 • Steve & Mary Piper, owners

Visit us on Facebook at [pipersfinefoods](#)

Website: [www.pipersfinefoods.com](http://www.pipersfinefoods.com)

## MARQUETTE EMS

Serving McPherson,  
Ellsworth, Saline, and  
Rice Counties as well  
as Kanopolis Lake



First aid station located on north side of Kanopolis Lake on holidays weekends.

# CALL 911

### HOURS

Mon. - 11 a.m. - 10:30 p.m.

Tues. & Thurs. - 7 a.m. - 10:30 p.m.

Fri. & Sat. - 7 a.m. - 12 a.m.

### TACO TUESDAYS

### THIRSTY THURSDAYS

4-7 p.m. - \$2.75 24 oz. Draw

### Breakfast • Lunch • Dinner

- Friday evening Food Specials
- Carry out food available
- Large parties welcome with reservation



Follow us on Facebook:

The Ranch House

109 N Washington St  
Marquette, KS

**785-212-1646**



## CITY SUNDRIES

Downtown Marquette  
104 N Washington St, Marquette, KS

Old-fashioned ice cream parlor featuring  
ice cream, fountain drinks, food, unique gifts and more!

Open Daily



City Sundries Soda Fountain and Gifts

785-546-2234

June 4, 2016

# VINTAGE

In the Valley

ONE DAY JUNK EVENT FULL OF ANTIQUES  
VINTAGE & HAND CRAFTED ITEMS, TREASURES & MORE!

VINTAGE | REPURPOSED | STREET FOOD | LIVE MUSIC  
8AM-3PM DOWNTOWN MARQUETTE \$3 ADMISSION

BROUGHT TO YOU BY VINTAGE IN THE VALLEY  
RUSTY TIN BOUTIQUE & VINTAGE [VINTAGEINTHEVALLEY@LIVE.COM](mailto:VINTAGEINTHEVALLEY@LIVE.COM)



Photos courtesy of Lindsborg Visitors and Convention Bureau

Charm seems to be the operative word in Lindsborg and McPherson County. At top left, clockwise, the town celebrates a Mid Summer's Festival, a street dance from photographer Jim Richardson, whose art can be found in the Small World Gallery, and a street scene featuring one of Lindsborg's outstanding homes.

# Lindsborg combines art and culture

Lindsborg is known as "Little Sweden USA." In fact, its connection to the old country is so strong, Karl Gustav visited here before becoming king of Sweden.

The town offers numerous celebrations during the year, but its signature event is the annual eight-day Messiah Festival inspired by the Swedish immigrant pioneers who established this community in 1869.

The town's recently remodeled Sundstrom Conference Center, is a great place for a wedding reception or other special event.

Information: (785) 227-2015.

**The Swedish Crown Restaurant** — The town's popular restaurant has both American and Swedish fare on its menu. Swedish pancakes and ostkaka with lingonberries are just two of the items on the menu. Swedish pastries and more traditional American dishes are on the Sunday brunch menu.

Hours: Tuesday through Saturday, 11 a.m. to 9 p.m.; Sunday, 9 a.m. to 2 p.m.; closed Mondays.

Information: (785) 227-8422.

**Birger Sandzen Memorial Gallery** — The gallery holds the largest collection of Birger Sandzen art in the world. It also is the location of the Midwest Art Exhibition during the Messiah Festival.

Information: (785) 227-2220.

**Courtyard Gallery and Courtyard Bakery and Kafe** —

Beautiful art and homemade pastries combine to make this a must-visit place in Lindsborg.

The gallery is open from 10 a.m. to 5:30 p.m. Monday through Saturday; and 1 to 4 p.m. Sunday.

The bakery and kafe are open from 9 a.m. to 5 p.m. Monday through Saturday.

**Old Mill Museum** — This complex includes the three-story brick Smoky Valley Roller Mill, which operates yearly at Millfest, and the Swedish Pavilion, which was prefabricated in Sweden as a Swedish exhibit building for the 1904 World Fair at St. Louis. Information:

(785) 227-3595.

**Hemslojd, the Dala Horse Factory** — Dala horses are a symbol of Lindsborg, and more than two dozen of them stand downtown. At Hemslojd — the Swedish word for crafts — Ken Swisher makes the horses, and artist Shirley Malm paints them, giving each one a distinctive personality.

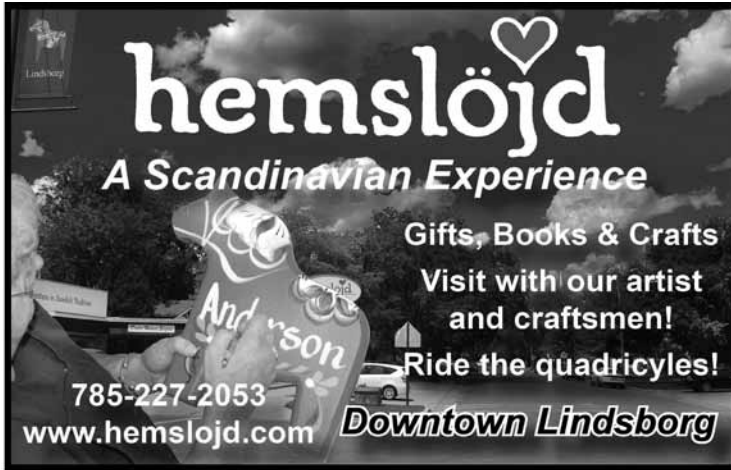
Information: (785) 227-2053.

**Small World Gallery**, 127 N. Main — The work of National Geographic photographer Jim Richardson is found here, along with jewelry created by his wife, Kathy. She will design a piece of jewelry using items from her collection or provide your own treasures and turn them into a work of art.

Information: (785) 227-4442.

**Broadway RFD** — Established in 1959, this is the longest running outdoor theater in Kansas. Musical productions every summer.

Information: (316) 650-8658.



**hemslojd**  
*A Scandinavian Experience*

Gifts, Books & Crafts  
 Visit with our artist and craftsmen!  
 Ride the quadricycles!

785-227-2053  
[www.hemslojd.com](http://www.hemslojd.com) **Downtown Lindsborg**



**Old Mill Museum**  
 and 1904 Swedish Pavilion

Exhibits in 12 buildings provide a glimpse into the lives of central Kansas pioneers. Visit a restored 1898 flour mill.


Open All Year, Mon. - Sat. : 9 am - 5 pm,  
 Admission: \$2 Adults, \$1 Ages 6-12, Under 6 Free  
 Phone: 785-227-3595

120 E Mill St, Lindsborg, KS 67456

Photo by Tom Jaderborg

the working studio of  
 NATIONAL GEOGRAPHIC PHOTOGRAPHER JIM RICHARDSON  
 and IBISWOMAN JEWELRY

---




---

127 North Main St. Lindsborg KS  
[WWW.SMALLWORLDGALLERY.COM](http://WWW.SMALLWORLDGALLERY.COM)



**Gallant Tire and Automotive**  
*Quality Auto and Tire Service*  
 Call 785-227-3489 

102 S. Main, Lindsborg, KS 67456

Full service NAPA automotive Center

- all makes of autos and trucks
- electrical diagnostic
- engine/transmission replacement
- oil changes

Tires

- sales
- service




Like us on Facebook  [www.gallanttireandauto.com](http://www.gallanttireandauto.com)



**Accidents and Injuries don't take weekends off.**

Weekend Urgent Care - Noon - 6  
 (use main hospital entrance)  
 24/7 Emergency Department

605 W. Lincoln, Lindsborg  
 Clinic: 227-3371  
 Hospital: 227-3308  
[www.lindsborghospital.org](http://www.lindsborghospital.org)



**Lindsborg Community Hospital**  
 Salina Regional Health Center

*Celebrating life's journey together in God's Love.*

**Bethany Home**  
 321 N. Chestnut Lindsborg, KS  
[www.BethanyHome.com](http://www.BethanyHome.com)





- ❖ Independent Living
- ❖ Assisted Living
- ❖ Long Term Care
- ❖ Rehabilitation & Short Term Care
- ❖ Skilled Nursing
- ❖ Personalized Care Plan
- ❖ Restaurant Style Menu
- ❖ Laundry & Housekeeping
- ❖ On-site clinic & Health Management
- ❖ Chapel & Worship services
- ❖ Daily programs, events & outings



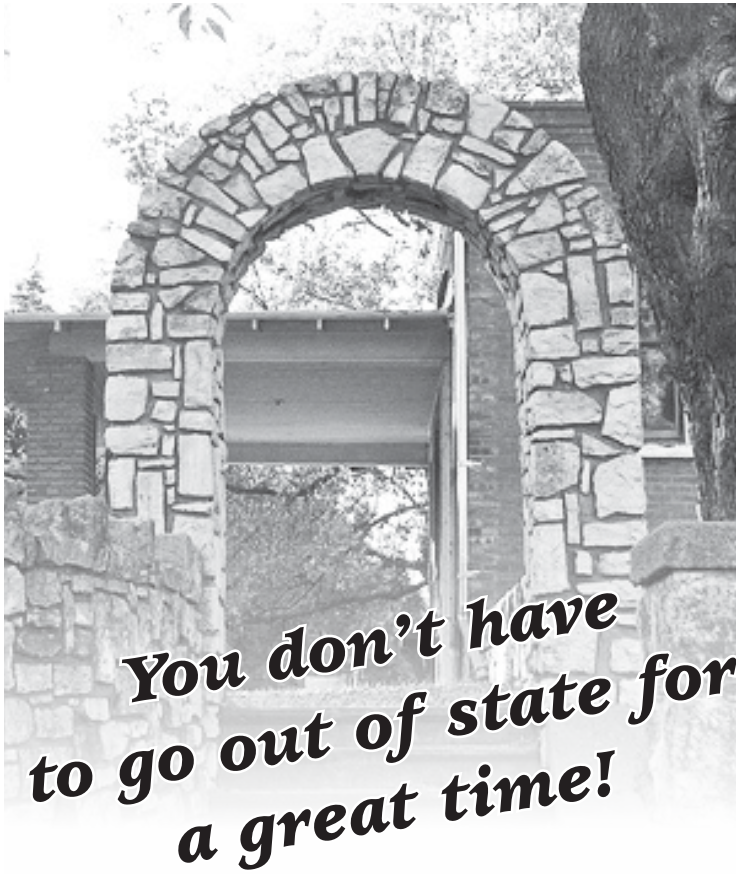
Affiliated with:  
**Evangelical Lutheran**  
 Church in America  
 God's work. Our hands.

**785-227-2334**  
 Medicare, Medicaid & Private Insurance Accepted



**RED BARN STUDIO**  
*Lester Raymer*  
 museum

Tues—Fri 10am to 5pm | Sat—Sun 1-5pm  
 212 S. Main, Lindsborg, KS 67456  
 785.227.2217 | [raymer@redbarnstudio.org](mailto:raymer@redbarnstudio.org)  
[lesterraymer.org](http://lesterraymer.org)



*Chestnut Studios*  
 arts & antiques  
 f chestnutstudiosbk • chestnutstudiosbk.com  
 110 n main st, lindsborg, ks 67456

*elle*  
 MAYBE  
 ALL YOU NEED  
 —————  
*is a*  
 weekend  
 in LINDSBORG  
 WWW.VISITLINDSBORG.COM • 888-227-2227

*Specialists in American and European toys*  
 112 N. Main, downtown Lindsborg, KS  
 10 - 5:30 M-F, closed Tuesdays, 10 - 4 Sunday

*Three Sisters*  
 Victorian Tea Room  
 & Treasures Gift Boutique

Open Tues. through Sat. 10 a.m. to 4 p.m.  
 New, Repurposed, Vintage, Home Decor & Gifts  
 All lunches by reservations only  
 For a list of monthly events or reservations,  
 call (620) 628-4488

105 North Main Street, Canton, KS 67248

**68<sup>TH</sup> McPHERSON COUNTY FAIR**  
**JULY 9 - 17, 2016**  
 MCPHERSON COUNTY FAIRGROUNDS  
 CANTON, KANSAS

- Parade
- Dance
- Pedal Tractor Pull
- Demolition Derby
- Co-Ed Ranch Rodeo
- CKYRA Junior Rodeo
- Open Junior Rodeo
- 4H and Open Exhibits
- Commercial Exhibits

*Exciting fun for the whole family!*

*Everyone Welcome!*

**620-628-4466**



The restored McPherson Opera House is the town's main performing venue. The Sons of the Pioneers, the Nelson Brothers and numerous other performers have filled the historic theatre.



The VAAM Gallery is next door to the McPherson Opera House.

## McPherson has it all, from art to history

**M**cPherson is a town with a lot to see and do. Spend the day exploring downtown or take the kids and enjoy the water park. In the evening, enjoy a performance by the Nelson Brothers, the Sons of the Pioneers or one of the other acts the McPherson Opera House regularly books.

**All Schools Day** — The longest running celebration of its kind, All Schools Day in early May has grown from a parade and 8th grade recognition banquet in 1914 to a week-long, countywide celebration.

The parade is a slice of pure Americana with floats, bands, May Day queens and clowns stretching for seven blocks through Downtown McPherson.

**The McPherson Opera House** — Built in 1889 at a cost of \$42,000, a dedicated group of preservationists have restored the outside of this wonderful three-story building. It gives hope to anyone interested in saving a historic building for future generations. We saw Ricky Nelson's sons perform here. There's always something to see.

### **McPherson Downtown** —

Like Marquette and Lindsborg, McPherson has a downtown worth exploring. Great shops, including the Cooks Nook, which offer big city choices

in a small town setting. You won't be disappointed.

### **McPherson Water Park** —

600,000 gallons of fun for all ages. It is a family, quality of life water experience. You can select from an assortment of activities; cruise the 500 foot lazy river, a giant water slide, deep diving area, 8 lane 50 meter pool, and a children's spray recreation area.

Information: (800) 324-8022.

### **McPherson Museum,**

1111 E. Kansas Ave. —

McPherson Museum and Arts Foundation offers many services to the public. The museum houses a variety of artifacts: historical artifacts from the McPherson area; natural history artifacts such as meteorites, Ice Age fossils, and regional fossils; ethnic artifacts from China, Africa, and of Native Americans; and fine art, including an extensive collection of Birger Sandzen lithographs and original art pieces. In addition, there is information about the city and county namesake, General McPherson; about the first man-made diamond large enough to be visible, created in McPherson; items from the McPherson Globe Refiners basketball team, the first team ever to win an Olympic gold medal; and an original MGM mascot lion skin, formerly belonging to a McPherson resident.

Museum events, such as an annual lecture series, educational programs, and social events which both educate and entertain, are mainstays.

Hours: 1 to 5 p.m. Tuesday through Saturday. Closed Sundays, Mondays and major holidays.

Phone : (620) 241-8464

**Main Street Deli** — Mouth watering best describes the fare here. Made-from-scratch pies, cookies and quiche have been the specialty for more than 20 years. Unique and delicious sandwiches, yummy salads and soups ... Broccoli Cheese or Potato Bacon is a must if you've never tried them. So many choices ... it will be hard to choose! While you are here, check out the gift shop. It is chock full of fun and unique gifts for everyone. Eat and shop ... what more could you want?

### **McPherson County Fair, Canton** —

The fair, which dates back to 1948, is July 13-17 in the Tom Miller Arena at Canton, a small community outside McPherson. Activities actually start the Saturday before the fair, which kicks off July 13 with a youth rodeo. The CPRA Rodeo is July 15 and 16, starting at 8 o'clock both nights. The fair ends July 17 with a demo derby at 5 p.m. Livestock shows also are a highlight of the week.

Information: (620) 628-4466

**Explore  
Central  
Kansas!**

*McPherson Museum presents*  
something old & something new  
**BRIDAL FAIR**  
**July 9, 2016**  
9 am - 2 pm  
Bridal Show 11 am to Noon  
McPherson Museum & Arts Foundation  
1111 E. Kansas Ave.

*Turkey Creek*

**McPherson Water Park**

*Concerts every Thursday evening June-August, Elm and Euclid*

*Movies in the Park*  
Saturdays at Lakeside Park Bandshell

- \*Max - May 14
- \*Kung Fu Panda 3 - June 4
- \*The Martian - July 9
- \*Star Wars:  
The Force Awakens - July 23
- \*Minions - August 6
- \*The Good Dinosaur - August 13

Cart Rental  
Twilight rates  
Driving Range  
Open year round  
Snack bar, pro shop  
18-hole public course  
PGA Pro, John Hastert

1000 Fox Run  
(620)241-8530

**MCPHERSON KANSAS**

visitmcperson.com    Convention and Visitors Bureau    800-324-8022

# Food and fossils are part of Hays scene

Is there any question about the wonders you'll find at the Sternberg Museum of Natural History at Hays? Discover something new each time you visit this place, with its world-class fossil collection.

Discover an ancient sea. Enter a replicated chalk cave to find yourself immersed in the watery environment that formed the chalk — an environment teeming with sharks, sea serpents and monstrous predatory fish.

Welcome to the Kansas of 80 million years ago.

Hours: 9 a.m. to 6 p.m. Monday through Saturday; 1 to 6 p.m. Sunday.  
Information: (785) 628-4286.

We also would encourage you to visit the Wild West Festival July 1-4 in Hays Municipal Park. Plenty of fun for the whole family, including the fireworks billed by organizers as "the biggest display in northwest Kansas." Featured artists include Maddie & Tae, Logan Mize, Blackhawk and Warrant.

Information:  
[www.wildwestfestival.com](http://www.wildwestfestival.com)

Other attractions:

**Ellis Railroad Museum** — The museum at 911 Washington features a telegraph room and model railroad layout. Ellis was a major railroad town for many years.

Hours: 10 a.m. to 4 p.m. Tuesday through Saturday.

Information: (785) 726-4493.

**Fort Hays State Historic Site** — The fort was established in 1867 to protect travelers on the dangerous Smoky Hill

Trail and workers building the railroad to the west. The original blockhouse, guardhouse and officers' quarters still stand.

Hours: 9 a.m. to 5 p.m. Tuesday through Saturday.

Information: (785) 625-6812.

**Ellis County Museum, Hays** — You'll learn about George Custer and other western legends. But even more to the point, is the insight the museum offers on the Volga German settlers, whose influence shaped Ellis County.

Hours: 10 a.m. to 5 p.m. Tuesday through Friday and 1 to 5 p.m. Saturday.  
Information: (785) 628-2624.

**Liquid Bread Brewing Company and Gella's Diner, Hays** — Sample handcrafted microbrews while you enjoy regional specialties such as green bean and dumpling soup. The deep fried green beans also are good. Live music on week-ends.

Hours: 11 a.m. to 10 p.m. (kitchen closes at 9 p.m.) Sunday through Thursday; 11 a.m. to midnight (kitchen closes at 11 p.m.) Friday and Saturday.

Information:  
(785) 621-2739.

**CS Post & Co., Hays** — This modern-day general store can be found

at 117 W. 11th. Upscale furniture, kitchen supplies, jewelry and much more.

Hours: 9:30 a.m. to 5:30 p.m. Monday through Friday; 9 a.m. to 5 p.m. Saturday.

Information: (785) 628-3000.

**Walter P. Chrysler Boyhood Home, Ellis** — The 1889 home was opened as a museum in 1955. Another building was erected in 1994 to display personal items from the founder of Chrysler automobiles.

Information: (785) 726-3636.

**St. Fidelis Catholic Church, Victoria** — This church is known as the "Cathedral of the Plains" a name inspired by William Jennings Bryan, who visited the area in 1912 as part of his campaign for president. The massive limestone church has twin towers, which can be seen from miles away. The church celebrated its centennial in 2009.

Information: (785) 735-2777.

We could tell you about our award winning craft beer, the fresh sushi rolls, the wood-fired pizza, or even the smells of competition BBQ, but making your mouth water would be mean.



## The Basilica of St. Fidelis

"The Cathedral of the Plains"

The presence of this large church on the Plains of Kansas is a lasting testimony to the faith and hard work of a people whose roots go deep into the soil of this farming community of Victoria.

*Come see the beauty of this church, and you will see why it was named one of the 8 Wonders of Kansas!*

601 10th Street • Victoria, KS • 785-735-2777  
[www.stfidelischurch.com](http://www.stfidelischurch.com)

[haysusa.net](http://haysusa.net)

800.569.4505



# Lincoln County defines Post Rock Country

**L**incoln County is the Post Rock Capital of Kansas. Visit the courthouse in Lincoln and you'll discover the reason for this designation. There are many buildings here made from limestone, which is found in layers in the earth, but none are more impressive than the county's center of government. The craftsmanship apparent in the construction also is worth a look.

In nearby Sylvan Grove, more than two-thirds of the businesses on main street are located in limestone buildings. North of Sylvan on Kansas Highway 181 is a stone double-arch bridge, a noted meeting place for three different ethnic groups during the area's settlement years.

Relatively new to Sylvan Grove is the family-owned brewery, Fly Boy Brewery & Eats. Information: (785) 526-7800.

Lincoln also is the home of the annual Lincoln Re-enactment in February, a day filled with history and music and a Lincoln Look-Alike Contest. Activities also include a President's Ball.

Other Lincoln attractions include the Post Rock Scout Museum and Crispin's Drug Store Museum.

The owners, Kathie and Jack Crispin, are former Lincoln business owners. Kathie Crispin is responsible for the Scout museum, which features historical exhibits of different Scouting organiza-



tions. Jack Crispin, a registered pharmacist, traces the history of his industry in the drug store museum, with special emphasis on the years 1180 through 1920.

The museums are open by chance or by reservation: (785) 524-5383.

Other attractions:

**Denmark** — There's not much here, as far as formal attractions. But the drive into Denmark is worth the trip. And it's fun to explore the town and cemetery. Denmark is west of Lincoln and then north. The town also has a picturesque Lutheran church with a steeple, which can be seen for miles.

**Lincoln Art Center** — Director Joyce Harlow rotates exhibits and the gift gal-

lery is a showcase for Kansas artists.

Hours: noon to 4 p.m. Tuesday through Friday; 10 a.m. to 1 p.m. Saturday.

Information: (785) 524-3241.

**Finch Theatre, Lincoln** — Showing movies on Fridays, Saturdays and Sundays.

For information on renting the community room/meeting room call (785) 524-4350 or the chamber at (785) 524-4934.

**Village Lines** — This downtown Lincoln business features Kansas products. Owner Marilyn Helmer also is an expert on the area's many attractions. This is a woman who can tell you where to go and how to get there. She also is the force behind the annual Lincoln Re-enactment.

Hours: 10 a.m. to 5:30 p.m. Monday through Saturday.

Information: (785) 524-5133.

**Kyne House Museum/Topsy School** — The history of Lincoln County is on exhibit in a grocery store, beauty shop and other displays.

Hours: 1 to 4 p.m. Tuesday and Thursday; 10 a.m. to 1 p.m. Saturday.

Information: (785) 524-9997.



# ADVENTURE AWAITS YOU at **ROLLING HILLS ZOO!**

OPEN  
MEMORIAL  
WEEKEND  
Open Daily 8-5



## **Father's Day Car Show**

**June 19**

Bring Dad to see a variety of vehicles from all over Kansas competing for cash prizes and top awards.

## **Dog Days of Summer Goes Wet and Wild**

**July 16**

A fun-filled day with water games, water inflatables, keeper encounters, and more!

## **Back to School Blast**

**August 6 - 7**

Bring the whole family for a day of fun before school starts! Half-price admission and \$2 hamburgers!

## **Zoo Brew**

**August 19**

Bring your lawn chairs and enjoy good brew, food, and live music by The Astronauts. Must be 21.

## **Rhino Rumble Poker Run**

**September 10**

Start with breakfast at the zoo, travel through four stops (90 mi. round trip), and end back at the zoo! Prizes awarded. Must register.



**FROGS**  
A CHORUS OF COLORS  
Through **SEPTEMBER 11th**



VisitSalina.org

THE  
BENNINGTON  
STATE BANK



[www.rollinghillszoo.org](http://www.rollinghillszoo.org)

625 N. Hedville Road • Salina, KS • (785) 827-9488 • I-70 W Exit 244



# Voted 5th Best Steak House in Kansas

- Serving Prime Rib Every Friday and Saturday Night

- Full Bar

- Sunday Brunch Buffet Every Sunday (9:00am - 1:00pm)  
Featuring Breakfast and Lunch Items

- Daily Lunch Specials Tuesdays through Fridays

*Featuring the Culinary Skills of Executive Chef - Anthony Richard  
(Graduate Culinary Institute of America - New York, International Chef)*

Breakfast and Lunch Hours: Tuesday thru Sunday  
(7:00am - 1:30pm and on Sunday - open 8:00am to 1:30 p.m.)

Dinner Hours: Tuesday thru Saturday (5:00pm - 9:00pm)  
Closed Mondays

**ELLSWORTH**  
  
**STEAK • HOUSE**

Located at the intersection of Hwy's 156 and old Hwy 40 • **785.472.3043**  
Find us on Facebook @ Ellsworth Steak House, Trip Advisor and Urban Spoon