



The Riley Countian

Volume 138, Issue 39

October 14, 2020

75¢
per single copy

Official newspaper of Leonardville, Randolph, Riley, and USD 378 & USD 384

Riley County sees decline in positive COVID-19 tests

Riley County has 23 new positive cases and 29 additional recoveries since Friday's report. Of the 23 new cases, 12 are in the 18-24 age range. This age group represents 52% of the new positives and almost 77% of the total number of posi-

tives in the county. The percent of positive cases compared to the total number tested in Riley County continues to decrease. The positive rate for the week of October 4 (Week 41) was 7.4%, which represents a 1.4% decrease from

the previous week. Week 41 (October 4): 7.4% 79 positive cases 1,065 total tests Week 40 (September 28): 8.8% 103 positive cases 1,164 total tests Two Week Positive Rate: 8.17%

182 positive cases 2,229 total tests Ascension Via Christi Hospital in Manhattan is caring for 3 positive patients. The patients have symptoms severe enough to require hospitalization.

"The guidelines in Local Health Order No. 18 are working," said Local Health Officer Julie Gibbs. "I am thankful that we are entering the fall months with a downward trend for positive cases in Riley County. As winter approaches, with holiday travel and the typical flu season, we could see a spike in cases. We are preparing for that. I am hopeful that schools can remain open and that the current guidelines will continue to keep the community safe."

Two free COVID-19 testing events will be

held in Manhattan this week. RCHD is partnering with KDHE and the Kansas National Guard to host events in City Park on Friday evening from 5:00 - 7:00 PM and Saturday morning from 9:00 - 11:00 AM. Please enter the park from Fremont Street, near the Wefald Pavilion. No appointment or doctor's referral is necessary to participate.

Anyone who has symptoms, is a close contact of a positive patient, or would like information about how to get tested should contact their health care provider or call the Riley County Screening Line at 785-323-6400. The Screening Line is staffed by nurses and is available Monday through Friday from 8:00 a.m. to 5:00 p.m.

RCPD is fielding complaints about local businesses and organizations who are not following mask guidelines in the City of Manhattan. Upon investigation, RCPD has been able to gain voluntary compliance without the need to issue new citations in recent weeks.

"I would like to applaud local businesses for the speed at which they responded to the health crisis," said Gibbs. "The businesses and employees in Riley County were quick to adapt to the situation and implement safety regulations. I know it hasn't been easy, but your efforts are paying off and we're grateful for your hard work."

Assistance is available for local businesses that have been impacted by COVID-19. The Manhattan Area Chamber of Com-

• Cont. on page 2

Harmison receives Keats Lions scholarship



Garrett Harmison, center, was recently awarded a scholarship from the Keats Lions Club. He is pictured with Lions Club president Rich Webster and treasurer Doyle Jones. Garrett is attending Manhattan Christian college playing basketball and working on his Divinity Degree and also attending KSU where he is studying for a degree in History.

Blue Valley Homecoming King and Queen crowned



Homecoming Queen Shianne Shelton and King Jeremiah Duncan were crowned at half-time of the football game against Wetmore.

USD 384 photo

RCHS crowns Homecoming Royalty



Riley County High School crowned Ashtyn Kulp and Nic Allen the 2020 Homecoming Queen and King at the football game against Council Grove Friday night. Pictured are 2019 King Garrett Harmison, Jessa Kulp, Bryan Hopper, Kulp, Allen, Ames Burton, Ethan Bohnenblust, and 2019 Queen Sarah Thomson. Attending the candidates were Cannon Steiner and Kinzie Sharp.

Photo by Karen Schroeder

Drug take-back event planned for October 24

On Saturday, October 24, from 10 a.m. to 2 p.m. the Riley County Police Department and the U.S. Drug Enforcement Administration will provide the public the opportunity to prevent pill

abuse and theft by ridding their homes of potentially dangerous expired, unused and unwanted prescription drugs. Bring your pills for disposal to Dillons-Westloop Location or Wal-Mart. (Sites cannot accept liquids, needles or sharps, only pills or patches.) The service is free and anonymous, no questions asked.

This October's event is DEA's 19th nationwide event since its inception 10 years ago.

Last fall, Americans turned in nearly 883,000 pounds of prescription drugs at nearly 6,300 sites operated by the DEA and almost 5,000 of its state and local law enforcement partners. DEA, along with its law enforcement partners, has now collect-

ed nearly 6,350 tons of expired, unused, and unwanted prescription medications since the inception of the National Prescription Drug Take Back Initiative in 2010.

To keep everyone safe, collection sites will follow local COVID-19 guidelines and regulations.

This initiative addresses a vital public safety and public health issue. Medicines that languish in home cabinets are highly susceptible to diversion, misuse, and abuse. Rates of prescription drug abuse in the United States are alarmingly high, as are the number of accidental poisonings and overdoses due to these drugs.

In addition to DEA's National Prescription Drug Take Back Day,

there are many other ways to dispose of unwanted prescription drugs every day, including the 11,000 authorized collectors that are available all year long. For more information, visit DEA's year-round collection site locator.

The FDA also provides information on how to properly dispose of prescription drugs. More information is available here: <https://www.fda.gov/consumers/consumer-updates/where-and-how-dispose-unused-medicines>.

For more information about the disposal of prescription drugs or about the October 24 Take Back Day event, go to www.DEATakeBack.com.

Countian Quicks

HARVESTERS AVAILABLE MONTHLY IN TWO LOCATIONS

Harvesters distribution of free perishable foods is available for pick up twice a month: on the first Friday at Randolph U. Methodist & on third Wednesday at Leonardville U. Methodist. Both times are 9:30-10:30 or until food is gone. There are no eligibility requirements.

KEATS LIONS CLUB K9 CLASSIC

Join the Keats Lions club for the Keats K9 Classic (dog not required for participation) a virtual 5k run/walk during the month of October. Registration is \$25 for entry and a T-Shirt and you can sign up at <https://runsignup.com/Race/KS/Manhattan/KeatsK9Classic> any time!

LEONARDVILLE AREA BUSINESS ASSOCIATION TO HOLD HARVEST FEST

The Leonardville Area Business Association is planning a Fall Festival on Oct. 24. See ad on page 4 for full schedule of events.

RANDOLPH CHURCH FALL SUPPER CANCELED

The Fall Supper at Randolph Church scheduled for October 28th has been canceled.

MEN'S COFFEE CANCELED

The Men's Coffee at the Riley Presbyterian Church has been canceled until further notice.

RILEY SENIOR MEALS RESUME

The Riley Senior Meals will meet every Wednesday, starting October 21 at noon, at the Riley Centre.

TEMPORARY HOURS FOR LEONARDVILLE LIBRARY

For the next few weeks, until a Director is hired, the Leonardville City Library will be open only two days a week. Monday from 4-7 and Tuesday from 1-5:30. Thank you for your patience.

LEONARDVILLE PRIDE BLESSING BOX

Leonardville Pride invites you to stop by the Leonardville Blessing Box in front of the City Library. They encourage you to take items that will help you and your family. Questions? Call 785-410-5200.

SONS OF THE AMERICAN LEGION

The SAL meet on the 2nd Thursday of the month at 6:30 p.m. at 107 South Erpelding in Leonardville.

RILEY PRIDE MEETING

Riley PRIDE meetings are held the third Thursday of each month at Riley City Hall.

LEONARDVILLE AMERICAN LEGION

The Leonardville American Legion meetings are the 1st Thursday of the month at 7:00 p.m. at 107 South Erpelding in Leonardville.

Community News

Silver Creek Beneficiary Club

Silver Creek Beneficiary Club's Centennial 1960-1969 America's Camelot

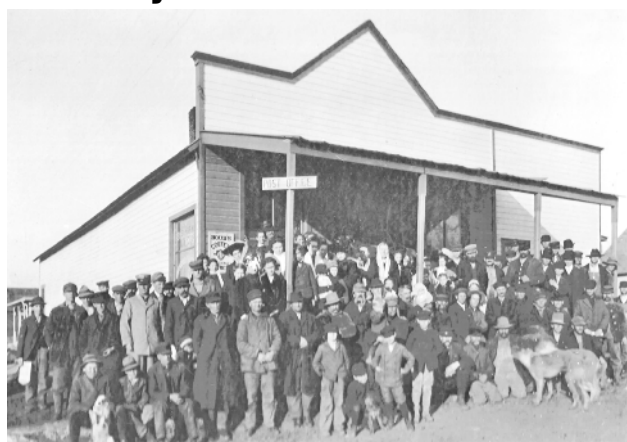
Written By SCBC Member Mary Pauli SCBC Historian Jeanette Campbell

Take a journey — in time, rather than miles — Silver Creek Beneficiary Club's (SCBC) 100 Year Centennial Anniversary 13th series America's Camelot journey. Written by decades and 1960-1969 series are American's Camelot; Oh, We're From Sunny Kansas; and the Peace Corps. To understand SCBC member's journey you need to understand many subsequent changes in Wildcat Township in the county of Riley, Kansas; town of Keats; and life in the world around them.

JFK era was dubbed "Camelot" because the youthful president and his glamorous wife, Jacqueline Kennedy, evoked a sense of national optimism expressed in a line from a Broadway musical Camelot. The charismatic John F. Kennedy became president of the United States January 20, 1961.

1960-1969 Life of Riley in Wildcat Township and town of Keats from heydays business's remaining a Gasoline Station. Established early 1930s Stone Gasoline Station West edge of Keats last owner and operator Dale Walters closed 1964. Property is still owned by Dale and wife Phyllis a SCBC member since 1966.

1862-1965 Keats Grade School - last



J.W. Stephen's General Store With Post Office Keats, Kansas. SCBC member Marcella (Chapman) Gocken Grandpa Elmer Chapman is in photo. Elmer arrived by train with marriage license for a Feb 8th, 1910 wedding. Crowd waiting for the weekly drawing at J.W. Stephen's General Store.

1860-1967 Wild Cat Village Post Office Timeline Highlights:

Pioneers went to Manhattan for mail.

Mail delivered by stage to home 3 1/2 miles West of Keats.

1860 Wild Cat (Keats) Rural Post Office established in a home. Mail delivered weekly from Manhattan by a youngster on horseback.

1869 Post Office relocated to J.W. Stephen's General Store.

1869 First known Postmaster.

1900s Post Office located in Harner's store, a home, and Bank building. A baby buggy was used to pick up mail delivered to Keats by train. Later mailbag was grabbed with a stick as train slowed up going through Keats.

1931 Post Office located in Bank building closed. Building became a grocery store continued to house Post Office. Building was tore down and Post Office relocated to homes.

1967 February 10th Wildcat Keats Post Office closed and incorporated into Manhattan. Last Postmistress and home - Hazel Crowl SCBC member for 47 years.

All mail was delivered by rural carrier through the Manhattan Post Office with residents using Rural Route 1, Manhattan, Kansas 66502.

Green News

Church was cancelled at Green Methodist last Sunday but Sunday School was held for those who wanted to come. Adult Sunday School is studying the book of James and last week's discussion was Chapter 3, the Taming of the Tongue. Glad I didn't miss that lesson! If you haven't read the book of James, it is very short, but packed with wisdom and advice just as pertinent today as when it was written.

On Saturday, October 3, a bridal shower was held at the Green Community Christian Center for Emily Leinweber, bride elect of Gage Cordell. Emily is the daughter of Jennifer and Will Rodecap of Green and Steven Leinweber of Topeka.

The Green City Council met on Monday evening at their regular monthly meeting and made the final arrangements with the contractor for the building of the new Green City Hall. Many of you know that the city hall is the former VFW building. As we prepare to tear down the old building, we will be packing up the old papers and materials from the store room. I plan to help with that and save anything of historical significance, which I will share with you, readers. Already we have come upon something I know you will enjoy.

Today's photograph is a Bingo Card with Fay Walker Post 8746 printed on the bottom. There is a whole box of cards like this as well as the cage and balls for calling the bingo numbers. How many bingo games do you



suppose were played in Green using those supplies? I remember bingo being played in the basement of the Oddfellows building north of the city hall. Teen town was also held in the basement. I was a pre-teen but I remember doing the Mexican hat dance in that basement! VFW meetings were held in the upstairs of the Oddfellows building. The stairs were on the outside of the building. Unfortunately that beautiful brick building is now gone.

Fay Walker, son of Mr. and Mrs. Bedford Walker of Green, enlisted in the United States Marine Corps in February of 1918. Sadly, Fay died two days before reaching France on November 8, 1918, from the Spanish flu. Unlike many who die at sea, his body was shipped home and he is buried north of Green in the Fancy Creek Cemetery. In honor of Fay, a new post named "Fay Walker VFW Post 8746" was chartered in

Green in 1946.

I went to many bingo games with my grandmother who loved to play bingo! Now you might be able to guess that there are some who would like to revive playing bingo in Green! So don't be surprised if you hear about a bingo game in the future, played with the old Fay Walker cards!

We are still accepting donations to build the new Green City Hall. You may send your check for any amount to the City of Green, P.O. Box 93, Green, KS 67447. Make a note of who the memorial is for on your check. A huge thank you to those of you that have already sent a check!

Send your news of today and yesterday to beverlycaley@yahoo.com or mail to 2119 21st Road, Green, KS 67447. "Those who are peacemakers will plant seeds of peace and reap a harvest of righteousness." James 3:18

Bob Caley Trucking
Dirt & Gravel Hauling, Road Grading
2119 21st Rd., Green
785-944-3334
Cell: 785-632-1256
email: caley@twinvalley.net

Ready to leave the driving to someone else?
Curious how to access our bus system?
Call us and let's visit:
1-877-551-6345
flinthillsatabus.com
General Public Transportation
First come, first served. 7am to 7pm
This project funded in part by KDOT Public Transit Program

Pfaff Service, LLC
Call us for all your Automotive Needs!
Tires, Batteries, Brakes, Bolts, Oil Changes, Tune-ups, Hydraulic Hoses, Roller Chains
Randolph: 944-4444 or 293-2113 (Tim's Cell)

GTB Custom Meats Inc.
"You still can't beat our meat!"
1/4 or 1/2 Beef
1/2 Hog
1/4 or 1/2 Buffalo
Our own Jerky, Snack Stix, Smoked and Summer Sausage
ATV Sprayers, Hoses, wands & parts
• Pop • Beer • Ice • Snacks
• Propane Bottle Exchange
315 S. Main
Riley, KS 66531
Open Sat. 8 a.m.-Noon
Bus. Phone 785-485-2595
Cell: 785-293-2020

Riley Pawn & Liquor
311 S. Main, Riley
785-223-1982
We also offer competitive pricing on **TIRES**
5x12 Storage Units \$40 per month
For Sale:
2001 Honda 1100cc Shadow Spirit \$2,500
8x12 Truck Flat Bed - \$400

Closed on Sundays to observe the Sabbath. Classic Car Night will move to Saturday.
Classic Car Saturdays
Get a discount equivalent to the age of your classic car!
Pay the Time Pizza Mondays
Starting at 6 p.m., get medium 1-topping pizzas for the price of the time you call in!
\$10 Tuesdays
1-topping larges - \$10
2-topping larges - \$12
Buffet Monday-Friday 11:30-1:30, Daily Specials
Reserve our Party Room for your next event or meeting!
Fresh Salad Bar, Pizza, Pasta, Wings, Sandwiches, Ice Cream
119 S. Broadway, Riley
485-2834

Fang to hold Vote for Change Town Hall Forum in Leonardville
This Town Hall will be held on Saturday, October 17th from 4:00 - 5:30 p.m. at the Leonardville park shelter. It will be free and open to the public. All members of the county are welcome; constituents from District 2 are especially encouraged to attend.
The Fang Campaign would like to cordially invite the McKinley Campaign to the discussion. Said Candidate Fang, "Often, rural residents are left out of county discussions that affect the taxes they pay, the roads they travel, and the medical care they receive. It is time that politicians really listen to the rural residents who are the backbone of this country."

Covid
merce has information about grant opportunities on their website at www.manhattan.org. They also share information about requirements and best practices that businesses can follow in order to keep employees and customers safe.
Riley County Statistics for Monday, October 12, 2020:
Total positive cases in Riley County Residents: 1,968
Total active: 132
Total recovered: 1,827
Total deaths: 9
BUYING OR SELLING YOUR HOME?
Cindy Jo Kulp REALTOR®
785-422-7071
cindy@resourceks.com
www.cindyjo.resourceks.com
YOUR SOURCE FOR REAL ESTATE

The Riley Countian
P.O. Box 333 • 117 S. Broadway, Riley, KS 66531 • 785-485-2290
email: countian@twinvalley.net
Published weekly and entered as Periodical, postage paid at Riley, Ks 66531-0333 • (USPS466-100)
POSTMASTER: Send address changes to: Riley Countian, P.O. Box 333, Riley, KS 66531-0333
Official newspaper of Leonardville, Randolph & Riley: USD 378, Riley County; USD 384 Blue Valley in northern Riley County, KS.
Publishers: Ken & Donna Sullivan • Editor: Donna Sullivan
Office hours: 8:30 a.m.-noon; 1-5 p.m. Tues.-Thurs.; 8:30-noon Friday
Closed Sat., Sun., Mon.

YEARLY SUBSCRIPTION RATES:
Riley County and surrounding counties \$29 (tax incl.)
Elsewhere in Kansas \$30 (tax incl.)
Out of State \$31 (no tax)
DEADLINES
Display Advertising - 5 p.m. Thursday
News and Classified ads - 10 a.m. Friday
We will publish letters of reasonable length and local interest from readers. We do not publish letters which may be libelous, obscene or contain advertising. Letters will not be published from political candidates during campaign. Letters must be signed by the writer and include an address and phone number for verification of authorship or they will not be published. Addresses and phone numbers of the authors will not be published. Letters are subject to editing for style, clarity & length. Publication does not mean The Riley Countian endorses the views expressed. We retain the right to not publish any letter.

Kansas Press Association

Riley Reflections

THE RILEY RURAL TELEPHONE COMPANY

Compiled by Carol Williams and Glenna Walter Harrison

With Remembrances by Romelle Wilt Van-Sickle and Corliss Wilt Fleming

In 1900, the Riley Rural Telephone Company was started by Ebb Kress and Alec White. According to an article published in the *Riley Countian*, April 17, 1961, the early telephone company was located in a stone house known as the Southwick residence. Aaron Southwick had been an early settler in the original townsite. The red brick grade school facility, built in 1918, now stands at the Southwick site.

Around 1906, Alec White sold his half interest to J. E. Jacobson, and about one year later Ebb Kress sold his share to Harry McFaden. Two years later, in 1908, Jacobson and McFaden sold to Harry Peters; and in January 1910 Peters sold to Charles Reece.

Monthly telephone rates during 1906-1910 had been 75¢ per rural line, \$1.00 per city line.

In 1946 Walt Swenson was the owner, then in February 1949 John Wilt, father of Romelle and Corliss, purchased the company. John and his wife, Verna, operated it until 1957 when they sold it to Junction City Telephone Company. The Wilts continued to operate the Riley office for the new owner; Verna managed the office, and John worked on the lines. The town's 1995 publication, *Riley, Kansas 125th Anniversary*, details the "Wilt Family and Riley Rural Telephone Company (p. 20)."

The 1961 *Countian* article notes that the phone company's sturdy 1902 switchboard had remained in constant use for 50 years, until 1952 when the Wilts purchased a new one. Then in 1961, on Monday morning, April 17, at 10:00 a.m., Junction City Telephone Company's Riley phone service was upgraded to dial and the switchboard no longer was needed. The excitement in anticipating this advancement included Riley's young people. Former resident and local historian Glenna Walter Harrison specifically recalls that day: "I

remember going to school and anxiously looking forward to the new dial system when I got home! The prefix assigned to Riley was HUXLEY-5. That translates into 48 from the HU on the dial numbers and that's why we have the 485 prefix."

In 1968, the Junction City Telephone Company was sold to United Telephone, and in 1969 Verna Wilt began a seven-year career working in Junction City with United. Riley's phone service was again updated in 1994 when a computerized digital switch was installed by then-owner Sprint/United Telephone. A November 10, 1994, *Countian* article notes that Verna was asked to make the ceremonial first call on the new expanded system as she had been such a rich part of telephone history in this area. The new system gave phone customers access to a variety of long-distance carriers and provided all customers private lines.

Verna's and John's daughters, Romelle and Corliss, recall their early years with the phone company as it was situated in their home. The office was on the south end of the building; the Wilts lived in the north part. The former telephone office is now a private residence at 108 S. Broadway.

Memories from Romelle include the fact that her parents would work at the switchboard from 6 to 7 a.m. and from 9 to 10 p.m.

"Any occasion we attended in the evening was cut short as Mom or Dad had to be home to take over the switchboard at nine," says Romelle. And a night ringer alerted John and Verna to calls requiring assistance between the regular hours.

Their father, called Johnny by all, was known for being a prankster at times. He loved New Year's Eve, when two major parties usually went on in town and attendees would call friends to celebrate at midnight. One year, the prankster "threw open" all the switches and callers had access to all the conversations.

The Wilts' Friday evenings were spent touring Riley to check that street lights were working properly. Then on Monday evenings the rounds

were completed again, to put replacements in those spots where bulbs had been broken over the weekend by mischievous youngsters throwing rocks.

"Prior to the addition in the community of the modern fire whistle, there was a cord in the office that we were told NEVER to touch," Romelle recalls. If a patron alerted the office to a fire in town or the surrounding area, the operator would pull the cord and the whistle would sound. The telephone operator on duty would put out a "general ring" on the switchboard and someone would stand in the office door and shout out the location of the fire to passersby, who then went to the scene to assist.

Corliss remembers that when she was very little, her father would ask late in the evening if she wanted to hear the "bees." He would put the telephone headset on her and plug in to the switchboard, and she would listen to what sounded like a swarm of bees.

Corliss says, "Of course, I believed that's exactly what it was!"

She also remembers riding with her father on work calls out in the country, in the truck he called NellieBelle. While he fixed lines or installed a new telephone, Corliss would play beside the truck and around the farms.

"I would watch in wonder as he would put on his equipment and climb up the poles," she says.

In 1960, near the garage behind the house on Broadway, were quite a few wooden reels with telephone cable wound on them. Some were empty, and Corliss decided to play "circus" on one.

She says, "I got to walk on it, getting it to roll."

• Cont. on page 8

Obituaries

Dahlia L. Gaudette



Dahlia L. Gaudette died on October 3, 2020, at the age of 82.

She was born at her parent's home in the Bala-Broughton Area, August 8, 1938. Her parents later moved to Green, KS where she attended many country schools before moving into town. She attended Green High School until her senior year where she played basketball for Green High School before her parents moved to Manhattan. She graduated from Manhattan High School in 1956.

She married Robert Stitt Sr. in 1956. To this union four children were born. They later divorced. In 1978 she married Paul Gaudette.

Dahlia retired from K-State Facilities department after 30 plus years of employment as an accountant. She loved being with her children, grandchildren and great grandchildren. She was an accomplished seamstress, sewing clothes for her herself, daughters and granddaughters. She loved reading, watching sports, especially March Madness and the K-State Wildcats and the Kansas City Chiefs. She loved working in her yard and taking care of her dog, Kita. She was

a member of St. Lukes Lutheran Church.

She was preceded in death by her parents, Ed & Lena Noyes.

She is survived by her husband Paul Gaudette, of the home, her four children Suzan Borden of Phoenix AZ, Shelly Burklund (Kirby) of Olsburg, KS, Rob Stitt Jr. (Kathy) Manhattan, KS, Randy Stitt (Susan), Manhattan, KS one brother, Donald Noyes, Manhattan, KS and one sister Violet Radak of Westin, FL. Also 11 grandchildren, Jeremy Borden, Felicia Borden, Amber Befort, April Brenner, Amy Burklund, Abby Coyne, AJ Stitt, Alex Stitt, Payton Goans, Ainsley Stitt, and Avery Stitt. Also 5 Great Grandchildren.

Services were held be October 8, 2020 at at Yorgensen-Meloan-Londeen Funeral Home. Burial was at Kansas Veterans' Cemetery at Fort Riley, 5181 Wildcat Creek Road, Manhattan, Kansas 66503.

Memorial contributions may be made to The American Cancer Society or Manhattan Public Library. Contributions may be left in care of the Yorgensen-Meloan-Londeen Funeral Home, 1616 Poyntz Avenue, Manhattan, Kansas 66502. Online condolences may be left for the family through the funeral home website at www.ymlfuneralhome.com.

Elsie Irene Anne Schurle

Elsie Irene Anne Schurle, beloved daughter of Jeffrey Alan and Kristin Marie (Nichols) Schurle, was born sleeping on October 3, 2020.

She is survived by her parents, Jeff and Kristi Schurle of Manhattan: her siblings, Cody Schurle, Allie Schurle, Tanner Schurle and Logan Schurle: her grandparents, Stan and Betty Schurle of Manhattan and Wayne and Karen Nichols of Manhattan: aunts and uncles, Karen and Jimmy Dillon of Louisburg and their children, Calvin and Katie; Justin and Edee

Nichols of Manhattan and their children, Nate and Luke; Jarrod and Shawn Nichols of Manhattan and their children, Mason, Sutton and Lincoln and Travis and Emily Nichols of Manhattan and their children, Lily and Owen and many great aunts, uncles, cousins and extended family.

A private graveside service was held in the Sunrise Cemetery with Father Frank Cody and Father Don Zimmerman as Celebrants.

A memorial has been established for Life Choice Ministries. Contributions may be left in care of the Anderes-Pfeifley Funeral Home.

Condolences may be left for the family at www.apfunerals.com.

Mary Lou Holmberg



We lost our sweet mom. She passed away Saturday October 3, 2020 her home with her children at her side, at the age of 95. She was a child of the Depression and had lived a good long life. We are comforted knowing that she is reunited with our dad, the love of her life, who we lost 8 years ago. Mom was born in Randolph, Kansas, July 11, 1925 on the sleeping porch. She graduated from Randolph High School. She married dad in 1946, after he got back from the war. She resided in Overland Park, Ks, the past 60 years. During that time she was busy being a wonderful wife, mother, aunt, grandmother and great grandmother. She spent many years working at Panhandle Eastern Pipeline and retired from The Jones Store. She enjoyed reading, sewing, crafts, gardening, road trips, and church. She and dad exemplified unconditional love.

She is preceded in death by her parents, Elmer and Ina Nordstrom, her brother Junior, her son Jeffrey, her grandson Mitchell, her husband Merrill, her sisters and brother and their spouses, and most of her friends. She is survived by her children, Laura and Brian Stack, Jim Holmberg, and Julie and David Rodlund; her grandchildren, Lindsay, Jason, Megan, Joel, Kyle Hardwick; Hannah Rodlund Emme, Emma, Mary Kate Rodlund; Kirsten Stack Long, Becca Stack Hermanson; and several great-grandchildren.

Private graveside services will be held at Fancy Creek Cemetery in Randolph.

We offer custom designed monuments

Anderes-Pfeifley Funeral Home
Phil Pfeifley & Jarred Anderes
303 S. Broadway • Riley, KS
785-485-2222

The healthcare services you deserve. Close to Home.

RILEY FAMILY PHYSICIANS
Family Medicine | Pediatrics | Obstetrics

Our Services

- Routine Care of Acute Illness
- Chronic Diseases
- Pregnancy Care
- Pediatric Care & Well Child Check-Ups
- Gynecology - Pap Smears and Breast Exams
- Family Planning and Birth Control
- Treatment of Injuries and Fractures
- Physical Exams - Routine, Pre-employment, School, and Sports
- Cancer Screenings
- Diabetes Care
- Geriatric Care
- Nursing Home Care

SAME DAY APPOINTMENTS
ACCEPTING NEW PATIENTS



Allison Haynes, M.D.



Karen Hawes, FNP-C

785-485-2600 MONDAY - FRIDAY
8:30 a.m. - 4:30 p.m.
701 Schurle Way • Riley, KS • www.ccmcks.org

MEADOWLARK Memory Care Suites

Now in Manhattan & Riley!

- A home atmosphere • Some rooms have private baths
- Assistance with bathing & dressing
- Three meals a day, plus snacks
- 24/7 assistance
- Weekly housekeeping & laundry
- Transportation to appointments
- Medication management available



Formerly Autumn Hills, our Memory Care Suites bring Meadowlark's person-centered care into rural communities & local neighborhoods, easing the transition when a loved one can no longer be cared for at home.

7621 Falcon Road, Riley • 120 Scenic Dr., Manhattan
785-410-1212 • meadowlark.org



Banking On A First Name Basis

We believe our relationship with our customers is the most important part of banking. Making you feel welcome and providing outstanding personal service is our goal.

If you're tired of being just a number at one of the big financial institutions, come see us. We look forward to helping you with what you need.



Riley State Bank
of Riley and Leonardville



© We accept



Youth, Education & Sports



Vote Jim Vathauer

State Representative - 64th District

I am a 4th Generation Kansas Farmer who will be a Strong & Independent Advocate for:

- Medicaid Expansion
- Properly Funded Schools
- Kansas Agriculture & Water Policy
- Open & Honest Government

www.JimForKS64.com

Adv. Paid for by Jim Vathauer for KS-64, Amanda Kessler, Treasurer


2020 Leonardville Area Business Assn. Harvest Fest October 24, 2020

5:00 AM	BBQ contest can Start Cooking (LABA/GTB) Receive Meat and rules, meeting at 7:00pm on Oct 22 nd MUST be registered by Oct 19 th call (785) 410-2783
8:00-10:30 AM	Pancake Breakfast (Legion Post 40)
9:00 AM	Car/Motorcycle Show Registration (Legion/G&G) Sign up by of community park
10:00 AM	Food Trucks Arrive – (Jammin Jamaican Cuisine) Cornhole Brackets Posted (To register call 785-410-2783)
11:00 AM	Cornhole Starts (Leonardville volunteer Fire/ Grater Seed) Car Show Opens Vendors Open @ Frontage 109 Beer Garden Opens North of Stage K-State Game (TBD) televised by Twinvalley @ The Store, G&G Auto and Rockin' S Ranch Supply
2:00 PM	Car Show Awards/Parade through Nursing Home
4:00 PM	BBQ Judging
5:00 PM	Community Meal provided by BBQ Contest Contestants \$5 per plate (proceeds going to Leonardville Area Business Assn.)
6:00 PM	Concert and Street Dance w/ Craig Cook and the Marauders (LABA/Rockin' S/Gene Francis/Gavel Roads)















Sponsored by Leonardville Lions Club

Blue Valley girls back in action

Blue Valley Lady Rams were back in action starting Oct. 3 at the Onaga Tournament. With only two practices and few of the varsity players still missing, the Lady Rams played well even though losing all 4 games. Onaga 21-25, 25-17, 25-22. Wabaunsee 5-25, 8-25, Frankfort 16-25, 8-25, Wetmore 15-25, 18-25. Then on Oct. 6 which was Parents/Senior Night, the ladies played Valley Heights in their first match of the night and lost 6-25, 5-25. The score doesn't

show that they had several rallies back and forth which showed they were giving it their best. Centralia was the next match and lost 13-25, 10-25. The last match of the night was against Clifton-Clyde where they lost 16-25, 16-25. As the ladies play together they are improving each match. On Thursday Oct. 8 they played in make-up matches at Onaga. In the first match we played Onaga and won 25-19, 17-25, 25-21. This game was great to see everything come

together for them, now to work on being consistent. The next match they played well at times but lost to Doniphan West 15-25, 9-25. Some stats from the 9 matches: Landry Zoeller 38 Kills, 98% Serving, 2 Blocks; Kennedy Gibbs: 1 Kill, 2 Blocks; Breeanna Young 62 Kills, 75% Serving, 7 Blocks; Abby Cassel: 1 Kill, 1 Block 91% Serving, 320 Sets; Kirsten Allison 1 Kill, 1 Block; Kya Steven: 3 Kill, 1 Block, 94% Serving, Bailey Cox: 1 Kill, 97%, Brooklyn Young 73%

Rams fall to Wetmore in Homecoming contest

The Rams played a District 4 contest against TVL foe Wetmore on Friday night along with their Homecoming festivities.

Wetmore came out of the gate early and jumped on the Rams 14-0. The Rams rallied back and put two scores on the board mid-way through the 2nd quarter. Jeremiah Duncan hit Ryan Stevens on a 60-yard pass to score and Landon Schreiber completed the PAT pass in the back of the endzone to Jeremiah Duncan. On the next series, Landon Schreiber found Skyler Zoeller on a 33 yard TD pass and Brock Burgman on a PAT pass to bring the Rams within 6 at 22-16. The Rams trailed at half 30-16. The 3rd quarter saw both teams put points on the scoreboard in a quick fashion. Both teams returned kick-offs to the endzone and Trenton Schwerdt took the kickoff 76 yards to the house for the Rams. Schreiber completed a PAT pass to Zoeller to bring the score to 36-24. Schreiber would find Zoeller one time on a 22-yard pitch and catch to put six more on the board for the Rams and a PAT run by the Rams brought the score to 44-32. The Rams struggled to stop the running at-

tack of Wetmore. The Cardinals beat the Rams 64-32.

It was a great night for seniors Shianne Shelton and Jeremiah Duncan who were crowned King and Queen.

"We have a young football team this year but each week we are improving and getting better," said Coach Matt Schreiber. "The guys continue to work hard and bring it every day in practice and in games. Everything is fixable and that is what excites you as a coach. We are thankful to be back on the field and playing football.

Individual stats:
 Passing: Landon Schreiber : 14-23, 133 yds, 2 TD, 1 INT, 3 PAT; Jeremiah Duncan: 1-1, 60 yds, TD
 Receiving:

Skyler Zoeller : 5 receptions, 86 yds, 2 TD, 1 PAT; Brock Burgman: 3 receptions, 21 yds and PAT; Ryan Stevens: 1 reception, 60 yds, 1 TD; Jeremiah Duncan: 4 receptions, 25 yds, PAT

Rushing: Jeremiah Duncan: 6 rushes, 56 yds; Brock Burgman: 8 rushes, 29 yds; Landon Schreiber: 2 rushes, 11 yds

Kickoff return: Trenton: 76-yard kickoff return, TD

Defense:
 Skyler Zoeller -- 11 Tackles; Jeremiah Duncan -- 9 Tackles and 3 TFLs; Brock Burgman -- 8 Tackles and 2 TFLs; Jacob Rowe -- 7 Tackles and 2 TFLs; Bryce Hoeltzel -- 5 Tackles and Fumble Recovery; Chance Penner -- 3 Tackles and 1 TFL



Ethan Shanahan, #9, gets a tackle against Council Grove during Riley County's 61-6 Homecoming win Friday night. Photo by Karen Schroeder



SUZI CARLSON

✓Wife, Mother, Grandmother

✓Lifelong Kansan

✓21 year Municipal Judge


✓40 year resident of Clay Center

"Now more than ever, we need to put people over politics and get things done. I have proudly fought to protect our rural Kansas values and ensure our community has a strong voice in the Kansas Legislature. I ask for your vote." - Suzi

Vote On Tues, Nov 3

Advance Vote: October 14 - November 2

Paid for by Committee to elect Susan Carlson, Mark Taddiken, Treasurer



Falcon Cross Country results on page 6

WENDLAND AG REPAIR

For all your farm mechanic repairs, parts and supplies.
On your farm or at our shop

Contact Josh at:
 785-770-2304 (cell)
 785-944-2312 (shop)

AUCTION

SATURDAY, OCTOBER 17, 2020 — 10:00 AM
 11677 Kansas Avenue — RILEY, KANSAS

Federal Duncan Phyle Table & Chairs inc. 5 leaves; La-Z-Boy Leather Recliner; Queen Bed Frame; Rocker Recliner; Hard Back Chairs; Books; Side by Side Refrigerator; 40s & 50s Life, Popular Mechanics & Time Magazines; Yard Tools; Hand Tools; Christmas Decor; Chrome Chairs; Amber Glass; Wood Burning Stove; Wool Rug.

ANTIQUES & PRIMITIVES
 Copper Kettle; Stoneware; Wooden Pulleys; John Deere Pedal Tractor 10 & cart; Porcelain Coffee Pots; Wash Tubs, Bench Vise; **Advertising including Gas & Oil**, Cans, Bottles & Posters; Chicken Feeder; Cast Iron Tractor Seat; Transit; Anvil; 4 Metal Lawn Chairs; KC Chiefs Coca Cola 6 pack; Old Gas Cooking Stove; Lantern; Automobile Badges; Thermometer; Vintage Games; Veterinary Supplies; Ultrasound Machine for large Animals; Tools.

FARM EQUIPMENT & TOOLS
 6' Manure Spreader; Ford 8N Tractor; Cattle Squeeze Chute; Gehl 1090 12' Pull Type Swather; Fastline 20' w/4' dovetail GN with Dual Axles steel floor; Case Tractor w/3pt; Kawasaki Bayou 4x4 4-Wheeler; 16' GN Equipment Trailer; Ferguson Tractor; 5' 3pt Bush Hog Mower; 2135 Massey Ferguson Tractor; 12' Flatbed Trailer w/ Ramps; Hay Wagon, 16' BP Sock Trailer; 35-ton Country Tuff Log Splitter; Jon Boat w/Oars; Concrete mixer; Roto Tiller; Hotsy Pressure Washer; Solar Panel system with Hot water Tank and pumps; Bulk Fuel Tank; Grasshopper Mower; Grasshopper Vacuum attachment; Craftsman Mower; Tire weights and Chains; variety of Motors and Engines; Car Parts; Building Material; Misc. Lumber including 2x6 Boards; Windows; Doors; Guttering; Concrete Shingles; Bundle of rebar; Conduit; High Lift Jack; Stihl Weed Trimmer; Chainsaws; Miller Portable Gas Welder; Scaffolding; Shelving; Snow Fence; Wash Tubs; Cabinets; Extension Ladders; Air Floor Jack; ATV Sprayer and Pump, Snow Blower. & MUCH, MUCH MORE!

Auctioneer's Note: This will be a great Auction! Many items still packed in Boxes and wont be unpacked until sale day. Lots of Vintage, Primitives and Collectibles.

COME AND ENJOY THE DAY WITH US.
SELLER: LYNN ABEL-RUDOLPH

For lots of pics go to: www.RuckertAuctions.com

TERMS: Cash or good check. Announcements made day of auction take precedence over previous printed materials. All items sold as is, where is. Not responsible for accidents. CONCESSIONS AVAILABLE.

Jeff Ruckert, Owner/Broker/Auctioneer



2049 Fort Riley Lane,
 Manhattan, KS 66502
 785-565-8293
 jett.97@gmail.com

www.RuckertAuctions.com & on Facebook

HELP US MEET OUR GOAL

Join us as we invest in the future of local healthcare through a fundraising campaign benefiting our new Riley Family Physicians Clinic.

A fundraising campaign is currently underway with a \$150,000 goal towards the expenditures of equipment for the clinic. Naming opportunities of 14 rooms are available for gifts of \$5,000 to \$25,000. A few rooms have already received naming rights, so please call to check on availability (785) 630-2489. Each room sponsor will have their name or business name on the room plaque, along with their name on the donor board in the clinic lobby.

Donations can be made up-front, or as a pledge to be paid over three years. A donor recognition board listing all donors to the campaign of any monetary level will be installed in the clinic lobby.

YES! You can count on my support.

Enclosed is my check payable to "CCHF – Riley Clinic" for a tax deductible donation:

Name(s) _____

\$500 \$100 \$50 \$25 Other: \$ _____

I/We would like to pledge: \$ _____


I/We plan to give over one two three year period.

I/We would like to sponsor a room. Please contact me/us.


Anonymous Donation Phone: _____

I/We approve listing my/our name(s) on donor board recognition.

Return Form to: CCH Foundation, PO Box 512, Clay Center, KS 67432



RILEY FAMILY PHYSICIANS



For more information contact:
 Lori Stanley, Foundation Dir.
 ph 785-630-2489
 email: foundation@cmcks.org
www.ccmcks.org




ASTRO3 OCTOBER 16-18

astro3.com
785-562-3715

FREE COMMUNITY MOVIES EVERYONE WELCOME

ASTRO OUTDOORS

FRI & SAT 7:00 FRI & SAT 7:30
 SUN 2:00 FELDHAUSEN FIELD

Bring your blankets or your chairs or just sit in your car but come watch free movies at Feldhausen Field on Friday and Saturday!

Riley County High School Fall Sports Spotlight



Volleyball

Front Row: CJ Rignell, Emersyn Colby, Taryn Claar, Adele March, Lela Spiltler, Cadence Eakes. 2nd Row: Eliza Bowles, Emma Schurle, Hailee Taylor, Jaiden Brewer, Julianna Davies, Landree Jackson, Lindsay Reid, Ashlee Wilkinson. Third Row: Asst. Coach Jennifer VanSickle, Jessica Eystone, Anna Schrader, Jessi Brummett, Manager Payton Baker, Ashtyn Kulp, Kaytrin McGuire, Ames Burton, Jessa Kulp, Manager Kennedy Phillips. Back Row: Asst. Kesiah Winter, Manager Addie Mead, BreAnn Miesner, Lauren Roles, Farrah Fleshman, Lindsey Roles, Mariah Schroeder, Angelina Ellis, Montana Hammond, Maddie Davis, Taryn Shepard, Manager Gracie Sensley, Head Coach Jessica Holle



Football

Front Row: KJ Davis, Eli Sias, Jackson Shanahan, Brogan Schuh, Landon McCallister. 2nd row: Collin Rankin, Torin Sheaves, Stewart Bishop, Samson Waggoner, Lukas Kulp, Kaden Root, Ell Burton, Noah Frese, Ayden Bath, Kolton Payne. 3rd Row: Asst. Coach Ian Peters, Asst. Coach Erik Wilimon, Justin Stallbaumer, Cody Pfaff, Blake Brokenicky, Korin Koenig, Konner Stadel, Zak Zeller, Trey Harmison, Jace Ricketts, Ty Webber, Camden Foltz, Asst. Coach Derek Winter, Head Coach Steve Wagner, Asst. Coach Jason Klein. Back Row: Alosha Abernathy, Grayden Jackson, Bryan Hopper, Avery Holle, Ethan Bohnenblust, Kobe Stadel, Jack White, Taylor Schroeder, Ethan Shanahan, Connor Holle, Nic Allen, Chance Thomas



Cross Country

Front Row: Mara Williams, Thalia Hoyos, Alyssa Juracek. 2nd Row: Asst. Coach Maggie Henton, Paige Williams, Christina Beard, Hailey Sharp, Drew Shirley, Head coach Lance Sharp. 3rd Row: Owen Miesner, Anthony Cervantes, Ashton Fleener, Kristian Weston, Kyle Campbell. Back Row: Bryce Beckman, Nic White, Cody Sharp, Ryan McClure, Stormy Marteney, Braxton Schuh.



Band

Front/1st: Camden Bartlett. 2nd: Addie Mead, Gus Smith. 3rd: Owen Miesner, Jessica Mensch, Angelina Ellis, Ryan McClure, Ethan Shanahan. 4th: Lindsay Reid, Macy Sabo, Lauren Roles, BreAnn Miesner. 5th: Ethan Lindquist, Jacob Wendland, Clara Iseli. 6th: Olivia Headley, Maggie Schmelzle, Mara Williams, Emma Schurle. 7th: Kaden Williams, Landon McCallister, Tristan Abernathy, Stewart Bishop, Bryce Beckman. 8th: Cody Sharp, Kaytrin McGuire, Bodie Kulp, Hailey Sharp. Not Pictured: Natalie Bowman, Anthony Cervantes, Julianna Davies, Brandy Gocken, Kathryn Krepel, Brandon Moots, Noah Moots, Mandalyn Otto, Ashlee Wilkinson

Go Falcons!

These area businesses are proud to support the Riley County Falcons

- | | | | | | |
|--|--|--|---|---|--|
| <p>Riley
Riley State Bank of Riley & Leonardville
Anderes-Pfeifley Funeral Home
The Riley Countian
GTB Custom Meats, Inc.
Schurle Signs, Inc.
Gambino's Pizza
Copeland Insurance Agency, Inc.
Dean Klentz, DVM
Riley Pawn Shop & Liquor Store
BPW Masonry, Inc.
Alan Klug, CPA
The Farmhouse,
Olsburg and Riley Mulberry Feet</p> | <p>Fork in the Road
Hair Design Studio
Sharp Country Service
Short Stop
Guys & Gals Styling
Meadowlark Riley House
BAM Excavation & Trucking, LLC
Smith Plumbing
RAZ Automotive
Import Auto
Ember Woods Sawmill
Gavel Roads Online
Auction, Brian Wurtz
T&H Sharpening Service</p> | <p>Leonardville
Leonardville Nursing Home
Peoples State Bank, psbbanks.com
William R. Peterson Construction, Inc.
Fritz Oil Company
Margie's Country Image
Thurlow Farms, Inc.
Frontage 109 Farm Bureau
Financial Services, Matt Machin
The Store
Rockin' S Ranch Supply, LLC
G&G Automotive Repair</p> | <p>Randolph
Lakeside Plumbing Scardina
Construction, Inc.
Sharp's Short Stop
Pfaff Service, LLC
Sump Ag</p> <p>Manhattan
Bob's Plumbing & Heating, Inc.
B&L Trash Service
Little Apple Veterinary Hospital - Tom & Dr. Liz Lindquist
Jay White Excavating
Blueville Nursery, Inc.</p> | <p>Robert's Electric
PrairieStone, Inc.
Chiropractic Family Health Center
Robbins Motor Company
Tim Engle Agency
Lori Rogge Broker & Auctioneer, Gene Francis & Associates
V&V Electric Company,
Manhattan & Randolph
Flint Hills Family Chiropractic</p> <p>Blue Rapids
Home Oil Services, Inc.</p> | <p>Olsburg
Union State Bank, Olsburg & Randolph
Yantiss Insurance Agency
Clay Center
Bruna Implement Company</p> <p>Green
Bob Caley Trucking</p> <p>Barnes
Wendland Ag Repair</p> |
|--|--|--|---|---|--|

Church

St. Mark

Lutheran

Waterville, KS
204 N. Nebraska St.
At the corner of Walnut St. and Nebraska St.
785-363-2182 (church)
785-747-8084 (office)
Pastor Susan Bantz
Sunday Adult Education: 9:30 a.m.
Sunday Worship and Children's Church: 10:45 a.m.

Olsburg/Walsburg

Lutheran

Evangelical Lutheran Church in America
Keith Wiens, Interim Pastor
Office Phone: 785-293-5603
Pastor Keith's cell: 785-341-1600.

Our Mission statements

Olsburg: Become disciples, Live as disciples, Make disciples in Christ Jesus.

Walsburg: More disciples living more faithfully by the power of the Holy Spirit.

Olsburg Lutheran Church

104 N. 1st St., Olsburg, Kansas
Sunday Worship at 9:00 a.m.
Sunday School for all ages at 10:00 a.m.

Walsburg Lutheran Church

12351 Union Rd., Leonardville
Sunday School for all ages - 10:00 a.m.
Sunday Worship - 11:00 a.m.

Mission of ELCA

Marked with the cross of Christ forever, we are claimed, gathered and sent for the sake of the world. This is the mission statement of the ELCA. As members of the ELCA, we believe that we are freed in Christ to serve and love our neighbor. With our hands, we do God's work of restoring and reconciling communities in Jesus' name throughout the world.

Upcoming events

The Story of the Bible - This school year we are seeking to get better acquainted with the great story the Bible tells. We start with the Book of Genesis and go all the way through to the Book of Revelation. Connect with God each weekend (either in person or on Facebook) as we trace the Biblical story from beginning to end.

October is Pastor Appreciation Month.

Walsburg is collecting for the Leonardville Blessing Bin for the month of October. Donations may be left in the box at church. Items to include are canned goods, boxed goods and personal hygiene items. For more information, contact Vern Bulk.

Walsburg Walkers participate in Manhattan's Walk to End Alzheimer's, October 17, 1:00 p.m. Leonardville Community Building.

Olsburg annual elections for church committees, October 25.

Walsburg Women of ELCA, October 26, 1:30 p.m. Planning workshop for 2021 activities.

Walsburg Quilters, October 30, All-Day Lutheran World Relief Quilting, 9:00 a.m. Bring a snack to share and your brown bag lunch.

Keep the faith. Love God. Love others. Be the people of God!

Alert Covenant

Senior Pastor: Dwight Diller,
Pastor of Children and Family Ministries: Stephanie Nelson
Phone: 785-944-3416
Email: alert@alertcovenant.church
Website: www.alertcovenant.church
Worship: 9:30

The Alert congregation would like to invite you to our service. We love God and wish to express His

love to you. We pray that God's love and power to be real to you wherever you are Sunday mornings and throughout the week.

Coveting—all of us are prone to commit this sin. So, is there a remedy for coveting? Let me share a two-fold remedy for coveting: First of all, we must learn to be content with the provisions and possessions that God has given us (1 Timothy 6:6-11).

Learning to be content with the basic things of life such as food, clothing, and shelter is a real challenge for us because we live in a country where we are blessed in so many ways compared to third world countries. And we've come to expect that we should have almost anything we want because, after all, we live in America.

However, we can learn to be content with the provisions that God has given us by practicing a second remedy: we must possess a great desire and craving for the things of the Spirit. When we set our mind on the things of the Spirit and seek the Lord above everything else, we will become so satisfied with the presence of the Lord in our life that the things of this world will no longer satisfy.

Riley

Presbyterian

11 a.m. - Worship
Sunday, October 18
Pastor Gerry Sharp

Service will be held in the sanctuary on Oct. 18 at 11 a.m. All safety and sanitary protocol will be followed. All are welcome!

The Men's Coffee group is planning to resume meeting on Wed., Oct. 14, at 9:30 a.m. in the fellowship hall. All men of any age and denomination are welcome to fellowship over coffee and donuts.

Happy Birthday to Heather Roman, Oct. 23; Erich Schwartz, Oct. 25; Nancy Kaump, Oct. 26.

Please all be safe and respectful of others. God bless you all!

Please come worship with us. You are always welcome on Sunday morning and at all of our activities once we start them again.

Fairview

Presbyterian

Sunday, October 18
Worship at 9:30
Pastor Gerry Sharp

Guidelines are in order, let's all feel safe!

Announcements: Session Meeting, Sunday, October 18 - Session Members know the time. Nothing special planned as of now, but just know that you all who are attending are appreciated and we ask God's blessings on those who can't be there, and all that do attend. It's important to know that you are missed and also, everyone is welcome any Sunday. Have a good week!

Countryside

Bible Fellowship

Broughton Rd and Co. 859

Worship at 8:30 a.m.

Come join our worship!

Sunday, October 11, 2020, was a warm but windy day as we came to worship. Refreshments were there for all to enjoy.

Following the ringing of the bell, the service began at 8:30 a.m. with the Hymn "Let Us Worship and Bow Down." There was an object lesson which used the Words "Light and Love." Words were put up under the right word on a chalk board as different scriptures were given.

The Bible study was from I Peter 3: 8 - 12. After that study, a film was

shown. A video called "Monumental" which is a search of American's National Treasure."

Verses from II and III John were used again this Sunday. Devotions from the Upper Room from Sunday Oct. 11th was used. Then the Devotions from "Mornings with Jesus" for Sunday, Oct. 11 was given. The Service closed with prayer.

Crossroads

Baptist

Sunday School - 9:45 a.m.
Worship - 11:00 a.m.

Jerusalem

Road UMC

Pastors Sandy & Bruce Ferguson 785-293-5358 or 785-706-1595 (Sandy).

Please join us for Worship, Sunday School, and other events:

Swede Creek 20363 Halls Ravine Rd. (2 miles east of Tuttle Creek Blvd on Swede Creek Rd.): 8:00 worship with children's church; 10:45.

Randolph 105 Garrison (north of the park): 9:30 worship with children's Sunday school. 10:45 Adult Sunday School; Harvesters Mobile Food Distribution 1st Friday: 9:30-10:30 a.m. Wednesday Welcome free community meal; 3rd Wednesday: 5-7.

Fancy Creek Zion 21181 Ober Rd. (corner of Ober Rd & Bodaville Rd.) 10:00 Sunday School 11:00 worship.

Leonardville 110 N Colorado St (corner of Barton & Colorado): 10:30 Sunday School; 11:30 Worship; Cornerstone Kids (Bible stories, Fun, snacks); Wednesday after school until 5:30; Harvesters Mobile Food Distribution: 3rd Wednesday 9:30-10:30 a.m.

Keats/Riley

UMC

Keats Worship 8:45
Riley Worship 10:15

Sedalia

Community

8:30/11:00 Morning Worship
9:30 Sunday School
Kevin Larson, Pastor
Youth Ministers-Austin and Hannah Thayer



Thalia Hoyos placed 25th with a time of 23:54.9. Photos by Karen Schroeder

Falcon cross country hosts invitational

The Riley County boys placed 3rd in their home invitational meet.

Freshman Cody Sharp placed 11th with a time of 19:14.1; Owen Meisner, 14th-19:23.6; Anthony Cervantes, 19th-19:45.4; Ryan McClure, 24th-20:17; Braxton Schuh, 26th-20:23.5; Bryce Beckman, 59th-23:02.9; Ashton Fleener, 81st-25:49.3.

In the girls race the Falcons placed 5th with Hailey Sharp securing an 8th place finish with a time of 21:59.3. Christina Beard, 17th-23:06.9; Thalia Hoyos, 25th-23:54.9; Drew Shirley, 55th-27:14.4; Alyssa Juracek, 62nd-28:06.5.

For the middle school boys, 7th grade: Cyrus England placed 9th at 13:38.6; Trevor Allison, 23rd-15:40.7. 8th grade: Man Ortiz-Castro, 23-13:57.9; Mavrick Winter, 34th-17:24.4.

Middle school girls, 7th grade: Mikaila Frese, 1st-13:25; Belle Hancock, 5th-15:21.6. 8th grade: Aubrey Reasoner, 13th-15:53.4.



Hailey Sharp had an 8th place finish with a time of 21:59.3.



Cody Sharp led the Falcon runners with an 11th place finish a time of 19:14.1.

Walsburg quilters in service to others



Walsburg Lutheran Quilters serving those in need by sewing 60"x80" quilts and assembling infant kits and personal care kits for Lutheran World Relief! On October 6, these ladies loaded 37 large boxes (weighing

554 lbs.) filled with 40 infant kits, 52 personal kits, and 112 handmade tied quilts. The items were delivered to a Topeka church where the items will be moved to the next collection center. Donated items will be distributed to disaster area victims throughout the world! A wonderful outreach ministry that involves serving, fun, and fellowship!

Silver Creek Beneficiary Club

butchering day; cooking with spices; hands to mold a cherry pie; calorie watching in foods; diets; art work out of dough baked on a flower pot or jar; old dishes; making grape clusters; my favorite Thanksgiving day; and favorite salad recipe exchange.

60s Fashions early years reflected the elegance of the First Lady, Jacqueline Kennedy's tailored suits to simple, geometric dresses, known as shifts, were also in style. For evening wear, full-skirted evening gowns were worn; these often had a low décolletage and close-fitting waists.

SCBC kept in vogue learning: new fabrics and their care; shoe covering; how I wore my hair on my wedding day; hat demonstration; and lipstick blotter.

Sewing memories: making rugs; sofa pillows out of corduroy; textile painting; embroidered pictures, crocheted bedspread, smocked pillow; and crochet edgings. A service project was hemmed Tin Tea Towels for Institute of Logopedics in Wichita.

SCBC acts of kindness with cards, flowers, plants, rose bush, mums, courages, handkerchiefs, scarfs, earrings, candy, nuts, fruit, fruit juice, food, and clothing for: members; families; friend with serious burns; and neighbors during times of sickness, deaths, and hardship. SCBC had a flower and

card committee of 2.

Income from 4 auctions: winter sale for Virgie Nelson profit \$20.95 - members furnished 2 pies and baked beans 1960; Beck profit \$43.61 (hot dogs 20 cents, baked beans 10 cents a dip, pie 15 cents with coffee and ice tea for 5 cents)1962; Lloyd Taylor sale (meatloaf sandwiches, baked beans, pie and coffee)1963; Morris sale profit \$147.52 - members suppling 29 pies and 78 dinner plates and club purchased: coffee, paper plates, plastic forks and spoons 1967. Other SCBC income came from: club dues \$1.00 a year; sad sack sale; bake and bid sales; and floating gift donations.

Did you know Kennedy was an enormously popular president, both at home and abroad, and his family drew famous comparisons to King Arthur's court Camelot?

Epilogue: Ahh Camelot is a castle and court associated with the legendary King Arthur as a fantastic time, place, and atmosphere of idyllic happiness. Evoking a sense of optimism expressed in a line from a Broadway musical: "Don't let it be forgot, that once there was a spot, for one brief shining moment that was known as Camelot." Lets us not forget Stone Gasoline Station (early 1930s-1964); Grade School (1862-1965); and Post Office (1860s-1967) in a village known as Keats.

PARTNER WITH US!

AMERICA NEEDS JOURNALISTS
SO DOES KANSAS



Journalists shed light on vital issues that may otherwise be kept in the dark. They expose problems and give citizens the tools they need to make informed decisions about issues that affect everyday life in their community.

Help to ensure local newspapers are able to continue the important work that they do. PARTNER WITH US!
www.knf.column.us

National Newspaper Week • October 4-10, 2020

Voting is your

SUPERPOWER



REQUEST YOUR MAIL-IN BALLOT TO
VOTE 2020

https://www.sos.ks.gov/forms/elections/AV1.pdf

HEALTHCARE JOBS NEAR YOU!



We have Nursing, Certified Medication Aide, and Mental Health positions available in a correctional setting!

Ask about our sign-on bonuses!



Visit our website: www.CenturionJobs.com
Or contact: Paige Pansky at 785.227.9802 or ppansky@teamcenturion.com.

EOE

Classifieds & Legal Notices

First published in The Riley Countian on the 30th day of September 2020. Subsequently published Oct. 7 and 14, 2020.)

IN THE DISTRICT COURT OF RILEY COUNTY, KANSAS
In the Matter of the Marriage of: Angela M. Melvin and HJ M. Melvin
Case No.: 20 DM 446
NOTICE OF SUIT

The State of Kansas to HJ M. Melvin and all other persons who are or may be concerned. You are hereby notified that a Petition for Divorce has been filed in the above District Court by Angela M. Melvin. You have until on or before November 9, 2020, to file your answer with the Court in Manhattan, Kansas. If you fail to file an answer, judgment and decree will be entered against you based upon the Petition filed with the Court.

Angela M. Melvin, Petitioner

(Published in the Riley Countian Wednesday, September 30, 2020. Subsequently published October 7 and 14, 2020.)

IN THE DISTRICT COURT OF RILEY COUNTY, KANSAS
In the Matter of the Estate of VIRGINIA E. FITCH, Deceased

Case No. RL-2020-PR-000020

NOTICE OF HEARING

THE STATE OF KANSAS TO ALL PERSONS CONCERNED:

YOU ARE HEREBY NOTIFIED that a Petition has been filed in this Court by Greg Fitch, duly appointed, qualified, and acting Executor of the Estate of Virginia E. Fitch, deceased, requesting that Petitioner's acts be approved; the account be settled and allowed; the heirs be determined; the Will be construed and the Estate assigned to the persons entitled thereto; the Court find the allowanc-

es requested for attorneys fees and expenses are reasonable and should be allowed; the costs be determined and ordered paid; the administration of the Estate be closed; upon the filing of receipts the Petitioner be finally discharged as the Executor of the Estate of Virginia E. Fitch, deceased, and the Petitioner be released from further liability.

YOU ARE REQUIRED to file your written defenses to the Petition on or before October 26, 2020, at 10:00 o'clock a.m. in the District Court of Riley County in Manhattan, Kansas, at which time and place the cause will be heard. Should you fail to file your written defenses, judgment and decree will be entered in due course upon the Petition.

GREG FITCH, Petitioner

RODNEY C. OLSEN #9762

MORRISON, FROST, OLSEN,

IRVINE & SCHARTZ, LLP

323 POYNTZ, SUITE 204

MANHATTAN, KS 66502-6387

(785) 776-9208; 776-9212 (fax)

olsen@mfoilaw.com

Attorneys for Petitioner

(Published in the Riley Countian Wednesday, September 30, 2020. Subsequently published October 7 and 14, 2020.)

IN THE DISTRICT COURT OF RILEY COUNTY, KANSAS
IN THE MATTER OF THE ESTATE OF KATHLEEN L. O'NEILL, deceased,

Case No. RL-2020-PR-113)

NOTICE OF HEARING

THE STATE OF KANSAS TO ALL PERSONS CONCERNED:

You are hereby notified that a Petition has been filed in this Court by Pamala D. O'Neill, daughter and heir of

Kathleen L. O'Neill, deceased, praying that descent be determined as to real estate and all personal property owned by Decedent at the time of her death.

You are required to file your written defenses thereto on or before the 30th day of October, 2020, at 3:00 o'clock P.M. of said day, in said Court, in the City of Manhattan, Riley County, Kansas, at which time and place said cause will be heard. Should you fail therein, judgment and decree will be entered in due course upon the Petition.

Pamala D. O'Neill, Petitioner

John D. Watt

Attorney for Petitioner

815 5th St., P O Box 56 Wamego, KS 66547

785-456-2231

S.Ct. #9453

Letter to the Editor

Dear Editor,

In our 64th District race for State Representative, I am supporting Suzi Carlson and I will tell you why. Many of you may know my son, Luke, has the rarely-diagnosed autoimmune condition, PANS which stands for Pediatric Acute-onset Neuropsychiatric Syndrome. PANS and PANDAS (Pediatric Autoimmune Neuropsychiatric Disorder Associated with Streptococcal Infections) are inflammatory brain disorders impacting an estimated 1 in 200 children. Symptoms can include OCD (Obsessive Compulsive Disorder), tics, anxiety, restricted eating, aggression, behavior regression and loss of handwriting or math skills. It is not only a challenge with the condition itself but also to find doctors and specialists who will treat it. Kansas is behind on access to providers and treatment options. Furthermore, not only is it extremely difficult to find a doctor to treat it; some doctors don't even think the condition exists!

Rep. Carlson has been extremely helpful to our family personally and our PANS/PANDAS Kansas group in increased education about PANS/PANDAS in the State Legislature. Thanks in large part to Rep. Carlson we were able to schedule a hearing and testify last year during the 2020 Legislative session. She is still helping us communicate our needs to the other state legislators and we are working with her to secure legislation for the upcoming 2021 Kansas Legislative Session. Our goal is to get more doctors in the state to diagnose and treat this condition as well as insurance coverage. As a mother, she understands how we are fighting for our children to provide them the best medical care and insurance coverage.

She has fought for my son and other youth who have this condition, give her the opportunity to keep fighting for us as our State Representative in Topeka! Reelect Republican Susan Carlson for 64th District State Representative on November 3!

Melanie Musselman Clifton, KS

To the editor:
I write to encourage the reelection of Tom Hawk as our senator from the 22nd District, who has served us well.

Tom has a deep understanding of our community and has demonstrated this through his consistent involvement and full support of community initiatives.

On a personal level I appreciate his generous support of the Manhattan Arts Center as one of the jewels of Manhattan, including his encouragement over 30 years ago when I started an experimental theater program for high school students. That program continues to this day and has benefited hundreds of students.

This is but one example of how Tom has helped this community become better.

Jim Hamilton
120 Longview Drive
Manhattan, KS 66502

Service Directory

Check Here First For the Services You Need!

Auctions



READY... SET... SOLD!

Gavel Roads is the place to go to buy and sell equipment. Go to gavelroads.com to browse and bid on current auction items. Call or email to learn how we can help you sell your equipment.

Brian Wurtz, Sales Associate
785-587-7737
brian.wurtz@gavelroads.com
www.gavelroads.com



Accountants

Alan Klug, CPA
Payroll, Quickbooks, Taxes
785-564-1115
aklugcpa@outlook.com
Riley

Sharp Country Service
Taxes & Accounting
Farm, Commercial & Individual



Norma Sharp
785-485-2390

Beauty



Guys & Gals Styling
Annette Marden
485-2837 • Riley, KS

Car Care



Josh & Sarah Reasoner, Owners
Full Automotive Service
411 N. Main, Riley, KS
Office: 785-485-2787
Cell: 785-410-0605

Fritz Oil Co.

"Your Full Service Station"

- Oil changes & Other Services
- Transmission Fluid Exchange
- Bulk Fuel Delivery
- Radiator Flushes
- Custom wheels
- Firestone On-Farm Tire Service
- Tires- all sizes- most brands available next business day
- Home of the Purple Power Gas

293-5385
Leonardville

Chiropractor

Chiropractic Family Health Center

Dr. Mark Hatesohl
Clafin & Hylton Heights
Manhattan, KS
785.537.8305

Electricians


Robert's ELECTRIC

776-0743

Residential & Commercial
2708 Amherst Ave., Manhattan

Insurance

Copeland Insurance Agency, Inc.

Jay & Lance
485-2101
485-2103 fax
Box 347 Riley, KS

Veterinarians

www.littleapplevet.com
785-539-0191



Little Apple Veterinary Hospital



Propane

Home Oil Services, Inc.

LP Service You Can Count On
Phone 800-794-0945
After Hours 785-363-7931

Services

Woodworth Enterprise

Now carrying Airgas welding and cutting supplies, custom-made hydraulic hoses and Sunco race fuels along with racing oils.
785-313-2235
785-556-0208

T & H SHARPENING SERVICE

ALL TYPES OF SHARPENING
Bill Tittel, 212 E. Walnut
Riley, KS 66531
785-293-2274
billtittel@gmail.com

Extra copies of the Countian are available at The Store in Leonardville and Short Stop and Dollar General in Riley.

Storage

Randolph Storage Units

785-293-5813-785-313-1053
Various Sizes Available • Call for Information

Pfaff Service, LLC

Storage Containers 20' and 40' containers available to rent or own.
We can deliver!
Call 293-2113 or 944-4444

SELF BITTERSWEET STORAGE

785-485-2888

Several sizes available
Quality storage at reasonable prices.

Trucking & Backhoe

Skid Loader • Tree Shearing
Bohnert Hay & Livestock Equipment dealer
Aaron Weller at
785-485-2286 or 556-7142

Dugan Leonardville TRUCKING, LLC Kansas

Dump Truck & Trackloader/Skidloader Service
Pond Clearing, Terrace Repair, Basements, Pasture Clearing, Driveways
Larry 785-556-4536
Rodney 785-556-3775

Taylor Trucking, Inc.
Donald Taylor • Manhattan, KS

Dump truck/Motor Grader
Skidloader Service
Driveway & Land Regrading
Cell: 785-313-5016
Home: 785-539-6592

BAM

Excavation & Trucking, LLC
785-313-4385
bam311@hotmail.com

Business purchased from **Buddy Brown**

Noffsinger Veterinary Hospital

Dean Klentz, DVM
Clay Center
632-2110 • 485-2454

Trash Service

B & L Trash

6216 Tuttle Creek Blvd. Manhattan

Commercial & Residential
We service Riley and Manhattan areas
785-539-8698

Countian Classifieds

Classified Ads.....20¢/word (Minimum charge, \$4.00)
Cards of Thanks.....15¢/word
In Memoriam.....15¢/word (Minimum Charge, \$3.00)

CHARGE RATE
IF NOT PAID WITHIN ONE WEEK OF PRINTING

Classified Ads.....25¢/word (Minimum Charge, \$5.00)
Card of Thanks.....20¢/word
In Memoriam.....20¢/word (Minimum Charge, \$4.00)

This charge is for any word, including your name, initial, phone number or abbreviations.

BILLING CHARGE

Billing charges will be assessed on a monthly basis if the account is not paid by the 29th of the month. All classifieds will be added to the computer billing if not paid within a month after handwritten statement is received.

The Countian cannot verify the financial potential of advertisements in the classifieds. Readers are advised to approach any such ads with reasonable caution. All material published or inserted in the Countian is subject to final acceptance by the publisher. The Countian retains the right to cancel as well as refuse any ad at any time for any reason.

Card of Thanks

Thanks to all who remembered us with flowers, cards and calls as we celebrated our 70th wedding anniversary recently. We enjoyed reading the abundant number of cards. You brightened our lives! Blessings to you all. **Bart & Norma Coutermarsh** 39c
A special thank you to my family for hosting my 96th birthday with cake, ice cream, flowers and other remembrances. Also thanks to everyone who sent cards. All was very much appreciated. God Bless, **Mary Oberhelman** 39p
Thank you to the Fire Departments and the neighbors who responded to my combine and soybean field fire. Thanks to the quick actions of my fellow firefighters and neighbors, what could easily have been a disaster resulted in only minor damage. **Don & Rita Nelson** 39c

Don't borrow, subscribe!

Employment

Laundry Supervisor: Leonardville Nursing Home is looking for a Laundry Supervisor to work in a person-centered atmosphere. The supervisor hours will be Monday through Friday and will be responsible for scheduling, ordering supplies, monitoring elders' belongings, monitoring cleaning and staff while promoting teamwork. Health insurance and benefits are available. Please apply online at leonardvillenh.org. EOE 3x39c

Wanted

Family farm is looking for the opportunity to acquire Farm and Ranch lease opportunities. **Upfront cash bonus for multiple year contracts.** Top Dollar Paid. References Available upon request. Contact us today for a competitive bid. **785-268-1050**

WANTED: I buy beer/pop cans from 1930s-1960s in good condition found in attics, crawlspaces, outbuilding, etc. Still buying older electric guitars, bass guitars, amps, effects, etc. Any condition, working or not. Kevin, 785-564-0422 in Leonardville or kevinm@twinvalley.net TFNd

Fun Fact:

The online version of the Countian contains live links to websites that are in stories or ads. So if you click on one, it opens that website in another window. The online version is free to current print subscribers and just \$20 per year for the online version only. Visit www.rileycountian.com to subscribe!

Social

But one day she fell backwards and broke an arm.

She continues, "I never played on those again!"

Corliss concludes, "As I got older, I remember that it was just 'normal' for us to have a switchboard and pay phone booth in the house."

The Riley telephone operators working in 1961 when the service went to dial were Josephine Buseman, Alice Hayes, Violet Walters, and Edna Anderson White. Edna also had been the company bookkeeper for many years.

A list of all the operators who had served the Riley community was included in the 1961 Riley Countian article:

Mary Oberhelman Alcott
Nell Jenkins Barnett
Lena White Binaco
Grace Masterson Brandenburg
Betty Phalen Bryson
Alberta Heller Buseman
Josephine Webber Buseman
Lorene Bryson Codner
Barbara Chapman Copeland
Dorothy Webber Cormack
Margaret Zeisset Crowl
Lavena Wickstrum Dahman
Mary Alice Hayes Ewing
Mary Finney
Margaret Hunt Haas
Lora Norris Hageman
Mary Benninga

Hageman
Mae Beard Harmon
Edna Harris
Alice Jahnke Hayes
Clara Jean Mackender Henderson
Kenneth Jackson
Carrie Pultz Johnson
Grace Gravenstein Kirby
Nora Kress
Elaine Wright Levinston
Ethel Belin Lewis
Elaine Trumpp Lindstrom
Faye Wills Meyer
Minnie Kleiner Myers
Audrey Beard Newell
Gladys Parry
Ina Pultz Peter
Twila White Peterson
Betty Scott Phalen
Mary Phillips
Margaret Beckner Pollman
Dorothy Zeisset Pond
Bertha Popejoy
Gladys Popejoy
Margaret Ames Potorf
Carol Powell
Nell Reardon
Zella Gravenstein Renz
Mary Jane Sailors
Flora Schafer
Georgia Miller Shinski
Edna Rueck Sinn
Sarah Pfeffer Sylvester
Edith Parry Umscheid
Esther Kleiner Vaughn
Norma Meyer Wahl
Georgia Walker
Clara Visser Walter
Elsie Nordstrom Walters
Violet Buseman Walters
Elizabeth Wa-

Riley Reflections

genrodt Webber
Wilma Kaup West
Edna Anderson White
Gaila Chamberlain Williams
Romelle Wilt
Verna Bohnenblust Wilt

When the telephone service became self-dialing, the town of Riley would miss the personal courtesies of the many operators throughout those past 60 years. Today, in 2020, telephone service, along with internet and cable television, are digitally provided through fiber cable by Twin Valley Telephone Company of Miltonvale, KS, as well as by Eagle Communications of Hays, KS.



Peters to celebrate 95th birthday

Betty Peters of Leonardville will celebrate her 95th birthday on October 18, 2020.

In honor of the occasion her family is requesting a card shower. Cards may be sent to 207 E. Barton Rd., Leonardville, KS 66449..

Don't borrow, subscribe!

Letters to the Editor

To the Editor,
It was my responsibility during 16 years of city commission service to work with other elected officials at the city, state and federal level. I worked on many issues for Manhattan and learned that when state representatives and senators had served at the local level prior to going to Topeka, they were more effective, knowledgeable, and responsive to the needs of our city. Tom Hawk is the epitome of that experience. More than once, his leadership has enabled Manhattan to achieve key legislative goals addressing redevelopment, securing NBAF, and assuring educational funding. I have also appreciated his constant support for my own efforts to address Kansas energy

policy issues for over two decades. We are well served by Tom and I heartily endorse his re-election. Please vote for Tom Hawk!
Bruce Snead, Manhattan, KS

We need Senator Tom Hawk's influence and civility

1. Senator Hawk has the influence to help rebuild our local economy. Tom is the ranking member on the Senate Ways & Means committee and on the Governor's COVID-19 Statewide Economic Recovery Task Force. This means he has pull to direct state funds to our small businesses and communities.

2. Senator Hawk is committed to working across the aisle in a respectful manner. I witnessed Senator Hawk in action during a "Civil Discourse meeting" in Topeka this past January. Senator Hawk played a leadership role in bringing moderate, liberal, and conservative legislators together to discuss how to collaborate and interact respectfully. In a time when the country seems so divided, we need more Senators like Tom Hawk. Vote for Tom Hawk!
Tim Steffensmeier 721 Harris Ave Manhattan KS

Dear Editor,
I would like to provide my strong support to Tom Hawk for reelection to the Kansas Senate. I have known him in two capacities over many years. First, as a public-school counselor when our family's interaction with him displayed his regard for students, parents and community.

Later he contacted me when he was initially elected to the Kansas Legislature. I was teaching Public Finance at K-State and had been a consultant to several states, from Washington to New York, and was on the committee that made the official tax estimates for the State of Kansas. He wanted to thoroughly understand the purpose and impact of state expenditures and taxes before he made decisions for our citizens.

We had a lengthy discussion. Tom believes taxes should be balanced and fair and that they should be used to benefit everyone. State services are basically those which cannot be purchased in private markets, and can only be available if the state is willing to provide them: for example, the state court system, education for all future citizens, functioning of the legislature, roads and highways, supervision of child and health care facilities, as well as hundreds of other essential services for all Kansans.

Tom Hawk's current position as the Ranking minority member of the Senate Ways and Means Committee allows him to influence the state budget in ways that help business, agriculture, children, and indeed all citizens throughout Kansas and our district. He has and will continue to represent you well.

Ed Olson, retired KSU professor

Set-Up Remote Learning with Reliable and Fast Internet.

• No Contracts
• No Phone Required

WHAT ARE YOU WAITING FOR?
Get started today with Internet, Managed WiFi and Streaming TV and get \$50/month credit for 3 months! \$150 value!

LEARN MORE twinvalley.net
OR CALL 800.515.3311

Offer ONLY valid through Oct 31. Call Today!

TWIN VALLEY
Twin Valley • 618 6th Street • Clay Center, KS 67432

READY... SET... SOLD!

Whether you are in the market to buy or ready to sell, we are here to MAXIMIZE your interest!

GENE FRANCIS & ASSOCIATES
REAL ESTATE BROKERS & AUCTIONEERS

Lori Rogge
Broker & Auctioneer
(785) 556-7162
lori@genefrancis.com
www.genefrancis.com

425 Poyntz Avenue, Downtown Manhattan,
776-7821

Danenberg
ESTABLISHED 1966
JEWELERS

Your Friendly Hometown Jeweler

Dirk Westerman REALTOR

NextHome Unlimited
304 E. Chestnut Street
Junction City, KS 66441
785-632-1333 Mobile
785-762-2451 Office
dirk@nexthomeunlimited.com
NextHomeUnlimited.com
Each office independently owned and operated

Real Options. Real Help. Real Hope.

- Free Pregnancy Testing
- Free Adoption facilitation
- Free Maternity & Baby Items
- Post Abortion help
- Parent Education
- Professional Counseling Services

Pregnancy Testing Center

445 Anderson, Manhattan • 785-539-3338
Mon-Fri (9am - 5pm) • www.ptcKansas.com

WHAT FUTURE WILL YOU CHOOSE FOR YOUR CHILDREN AND GRANDCHILDREN?

IF YOU VOTE REPUBLICAN YOU ARE VOTING FOR:	A VOTE FOR ANY DEMOCRAT IS A VOTE FOR:
Opening Kansas' businesses and schools	Killing Kansas' businesses and churches
Creating jobs	Killing jobs
Energy independence	Dependence on foreign countries
The right to own family farms	Government control of farmland
Support for law enforcement	Defunding the police
Legal immigration	Open borders
Law and order	Riots and looting
Only citizens vote	Allow anyone to vote
All lives are sacred	Aborting babies up to the moment of birth
Keeping more of your own money	Higher taxes
Strong military	Weak military
Maintain the right to bear arms	Take away your guns
Private health care options	Government run healthcare
Right to work	Union membership required
Religious liberty	Remove religious liberty protections through the Equality Act
Constitutionalist Judges	Activist Judges
Traditional Marriage	Same sex marriage

BE SURE TO VOTE NOVEMBER 3RD. FOR THE SAKE OF OUR STATE AND OUR COUNTRY VOTE REPUBLICAN!

Paid for by Clay County Republican Party, Steve Wohler Treasurer