

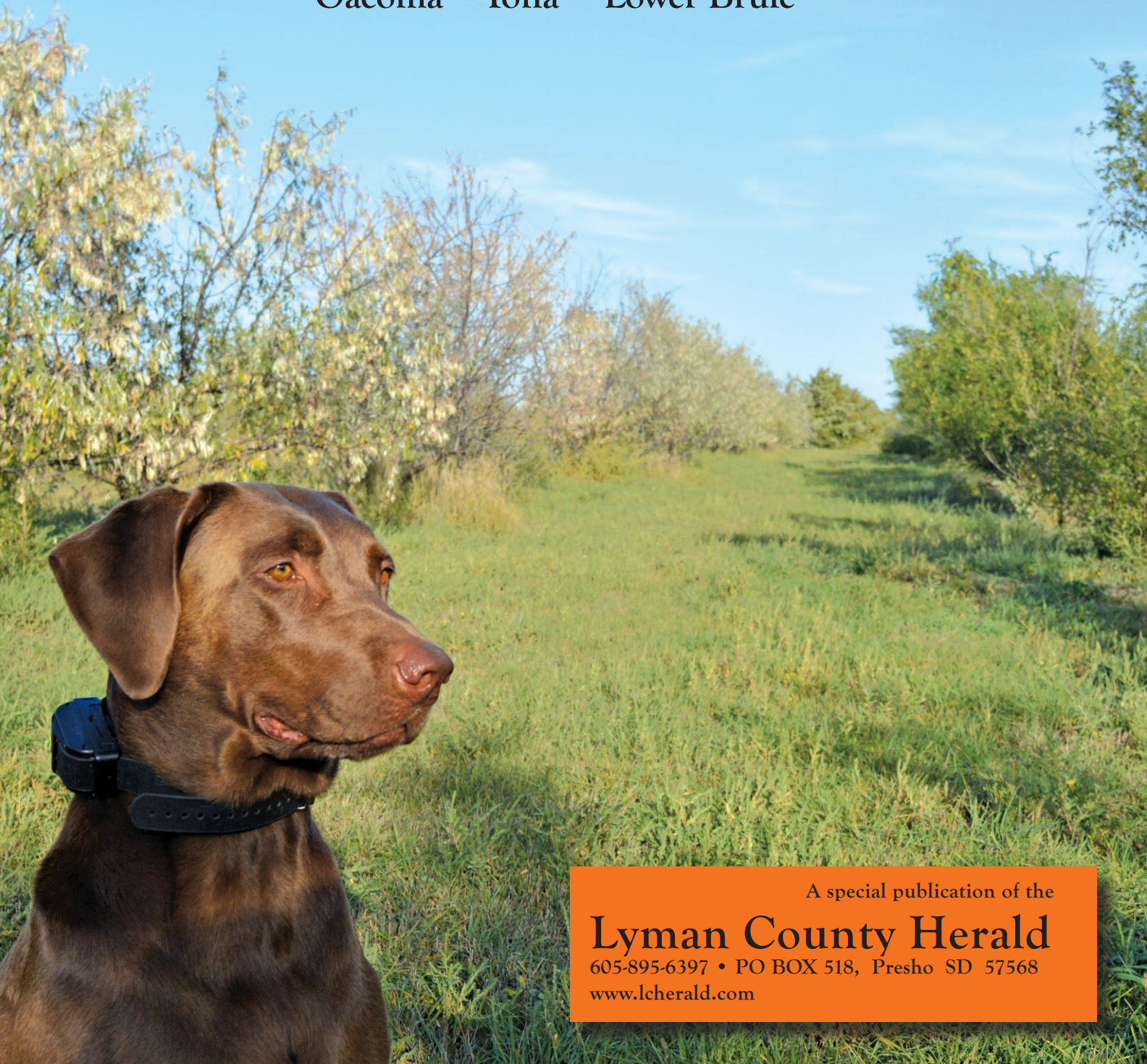
FREE

# LYMAN COUNTY

2016 Visitor & Hunting Guide

Presho • Kennebec • Vivian • Reliance

Oacoma • Iona • Lower Brule



A special publication of the

**Lyman County Herald**

605-895-6397 • PO BOX 518, Presho SD 57568

[www.lcherald.com](http://www.lcherald.com)





## Offering:

- \* Guided Hunts
  - \* Lodging
  - \* Home-cooked Meals
  - \* Year Round Lodging
- Call for Availability

# Comp's Pheasant Hunting

**Rob and Lois Comp**

30285 242nd St. • Presho, SD 57568

**605-895-2156**

[rlcomp@kennebectelephone.com](mailto:rlcomp@kennebectelephone.com)

**"Enjoy the finest upland bird hunting in South Central South Dakota"**



**One stop shopping for everything you need in the field**



Intersection of Hwy 83 & I-90 Exit 212

**Vivian, SD - 605-683-4666**

Gas & Diesel	Fresh Pastries
Pop, Beer & Ice	Deli Sandwiches
Wine	ATM Machine
SD Souvenirs	Hunting Accessories
Cell Phone Accessories	Shells
Hot Stuff Pizza	Clothes
Casino	Hats and Much More



**Open 24 hours!**

# WELCOME VISITORS

to the Lyman County towns of Presho, Kennebec,  
Vivian, Reliance Oacoma, Iona and Lower Brule

## Inside this issue:

How, where do I get a hunting license .....	2
Pheasant Survey: Numbers up .....	3
How come they call it Presho .....	4
Pheasant Recipe .....	7
The under appreciated little guy .....	10
Town of Kennebec .....	12
Parker Shotguns: Collectible but also usable .....	16
Town of Reliance .....	19
Muddy Boots hunt & 2015 PF Banquet .....	20
Keeping fido in tip-top shape .....	22
Village of Vivian .....	24
Turn in Poachers Program .....	24
Lyman County Government .....	28
Index of Advertisers .....	28

*Cover photo: Heather Core's chocolate lab, Meka, poses for a photo in a tree line south of Presho while recently training for the pheasant season opener. Photo by Heather Core for the Lyman County Herald.*

## Lines from Lucy

Lucy Halverson, Editor  
news@lcherald.com

Welcome to Lyman County. Whether you are in the area for hunting, visiting or considering relocation, we hope you will find our 2016 Visitor & Hunting Guide helpful in providing the information you need during your stay.

The Visitor & Hunting Guide is published by the Lyman County Herald and brought to you by the local advertisers featured with the pages of the 16<sup>th</sup> annual Guide.

Within Lyman County are the communities of Presho, Kennebec, Vivian, and Reliance. On the northern edge is the Lower Brule Indian Reservation and far eastern side is the town of Oacoma. The towns are all connected by Interstate 90 with the exception of Lower Brule, located north of Reliance on Hwy 47.

Interstate 90, a major east/west highway, brings many visitors to the state of South Dakota through our towns on their way west to the Black Hills and states further west. Travelers stop for food, fuel and lodging, but there is no doubt that the most visitors to this area arrive between October and December and usually stay for several days while hunting pheasant, grouse, antelope or deer.

Visitors to the area are important to our local businesses but agriculture is what drives the economy in Lyman County and much of the state.

It's a combination of agriculture and transportation that has brought new development to the county in the last two years and hopefully will bring more in the future.

South Dakota Wheat Growers recently built a new \$50 million grain handling facility near Kennebec that also includes a large agronomy center and a mile long circle railroad track to hold 110 car grain shuttle trains.

The elevator was built upon the commitment of the state to rebuild 40 miles of railroad from Chamberlain, on the eastern side of the Missouri River west to Presho at a cost of about \$36 million.

Both projects are huge investments in the infrastructure of Lyman County's ag economy and the transportation of goods in and out of the county.

The new Wheat Growers elevator opened last July and the railroad rehab project is nearing completion.

Lyman County residents are anxious to see and hear that first 110 car grain shuttle train arrive in Kennebec to load and haul out the first of what we all hope will be many more grain trains to come.

Published by the

**Lyman County Herald**

PO Box 518, Presho, SD 57568

605-895- NEWS (6397)

news@lcherald.com www.lcherald.com

**Publishers- Lucy & Kim Halverson**

Subscription to the

**Lyman County Herald**

Call 605-895-6397- now accepting credit cards

In-Lyman County -\$40

Out-of-county and out-of-state - \$45



# How, and where do I get a Hunting License

Resident and nonresident hunting licenses may be purchased at many sporting goods stores, hardware stores, convenience stores and some County Treasurer's Offices as listed below.

Licenses may also be purchased over the internet using a home computer and attached printer. The process for purchasing online licenses can be accessed at the Game, Fish & Parks website: [www.sdgfp.info](http://www.sdgfp.info).

## Carry your license on your smartphone device

Hunters, anglers and trappers in South Dakota will notice when logging into their account through our online licensing system that their small game, fishing or trapping license has a bar code in the upper right hand

corner.

This bar code allows South Dakota Game, Fish and Parks (GFP) conservation officers to electronically scan the license on smartphone devices (Android, iPhone, etc.) while in the field in lieu of a paper copy. Before heading into the field this fall, log into your GFP account from your device to view your small game, fishing or trapping license and take a picture or screenshot of it with your device (Android, iPhone, etc.).

For example, with an iPhone device, press and hold the Sleep/Wake/Power button on the top or side of the device while holding down the Home button at the same time, then immediately release.

The camera should click and you can then go into

the Camera or Photos app to view the screenshot of your license. Or if you have a paper copy, take a picture of the paper copy and store it in the Camera or Photos app.

No matter how you capture it, please make sure to get the entire license in the photo.

This electronic version is now an acceptable method of carrying a small game, fishing or trapping license.

If you choose to print and carry a paper copy of your small game, fishing or trapping license, that continues to be an allowed practice.

## OACOMA

- Cedar Shore Mickelson Drive 605-734-5214
- Al's Oasis 1000 E Hwy 16 605-734-6051
- West Forty 100 E Hwy 16 605-734-6929

## PRESHO

- Prescho General Store Hwy 16 605-895-2562
- Snake Den Lodge 110 E Medicine Creek Drive 605-895-2400

## VIVIAN

- Medicine Creek Pheasant Ranch - 605-683-6411

## KENNEBEC

- Lyman County Courthouse Treasurer's office  
Main Street 605-869-2295

## LOCAL CONSERVATION OFFICERS

**Spencer Downey**  
GFP Wildlife Officer  
605- 895-2138  
Prescho  
Western Lyman Co.

**Brain Ridgway**  
GFP Wildlife Officer  
605-734-4530  
Chamberlain  
Eastern Lyman Co.

**Steve Rossow**  
Dist. Conservation Officer/Supervisor  
Regional GFP Office, Chamberlain  
605-734-4528

After hours contact:  
**State Radio 605-773-3536**

**TIPS HOTLINE**  
**1-888-OVERBAG**  
**(1-888- 683-7224)**

To view the SD 2016 Hunting & Trapping Handbook  
visit the website: [www.gfp.sd.gov](http://www.gfp.sd.gov)

## Resident Licenses and Fees

2016 licenses valid Dec. 15, 2015, through Jan. 31, 2017

Combination (small game and fishing)* .....	\$55
Senior Combination, ages 65 and up (small game & fishing) .....	\$40
Junior Combination, ages 16-18 (small game and fishing) .....	\$27
Small Game* .....	\$33
One-day Small Game .....	\$12
Youth Small Game, ages 12-15 .....	\$ 5
State Migratory Bird Certification .....	\$ 5
Predator/Varmint .....	\$ 5
Furbearer .....	\$30

## Nonresident Licenses and Fees

2016 licenses valid Dec. 15, 2015, through Jan. 31, 2017

Small Game (two 5-day periods) .....	\$121
Youth Small Game, ages 12-15 (two 5-day periods) .....	\$ 10
Waterfowl (valid 10 days, lottery application only)* .....	\$121
Waterfowl (valid 3 days, lottery application only)* .....	\$ 86
Early Fall Canada Goose (lottery application only)* .....	\$ 50
Spring Light Goose Conservation Order* .....	\$ 50
Youth Spring Light Goose Conservation Order, ages 12-15 .....	\$ 26
State Migratory Bird Certification .....	\$ 5
Predator/Varmint .....	\$ 40
Furbearer (application only) .....	\$275
Shooting Preserve (annual)* .....	\$121
5-day* .....	\$ 76
1-day* .....	\$ 46

\* Fee includes a \$5 surcharge mandated by state law. Money derived from this surcharge is dedicated to hunting access and wildlife damage management programs.



# Pheasant Survey reported: Lyman County routes among highest in state

PIERRE, S.D. – The South Dakota Game, Fish and Parks (GFP) has completed the annual pheasant brood survey and the results show a 20 percent decrease in the statewide pheasants-per-mile (PPM) index from 2015. The 2016 statewide PPM index is 3.05, down from last year's index of 3.83.

Survey results indicate the decrease was significant for the Chamberlain, Winner, Aberdeen, Huron, Mitchell, Yankton and Sioux Falls areas.

Lyman north route showed an increase in the PPM from last year, moving up from 10.98 to 12.51 ppm in 2016. While the Lyman south route showed a decline from 15.80 last year to 13.49.

The two Lyman routes indicated the highest number of birds behind Tripp County north which had 14.15 ppm.

"After two consecutive years of substantial increases in the statewide PPM index, a slight retreat was observed this year. Of the 110 routes surveyed statewide, 38 showed an increase in PPM while 72 declined from 2015," stated Kelly Hepler, GFP Secretary. "Weather conditions and available habitat are key factors to pheasant production and annual PPM fluctuations. We want to remind hunters that this year's index is twice as high as the 2013 index and higher than the 2.7 PPM observed in 2014 when hunters harvested 1.2 million

## Local Area Pheasants per mile PPM

(Routes by county with the highest number of PPM)

County Route	2016	2015	10-yr avg.
Tripp North	14.15	15.96	16.28
Lyman South	13.49	15.80	22.94
Hughes North	8.28	12.14	8.69
Brule South	7.07	11.58	14.91
Brule North	5.84	11.27	21.07
Sully North	7.62	11.19	10.36
Lyman North	12.51	10.98	16.74
Potter Main	9.82	10.53	13.59
Bennett North	7.43	9.90	8.39
Potter North	6.14	8.87	10.37

**Statewide** 3.05 3.80 5.16

*\*comparisons are valid only between years within each local area.*

roosters. Good pheasant hunting opportunities will exist in 2016."

From late July through mid-August, GFP surveyed 110, thirty-mile routes across the state's pheasant range to estimate pheasant production and calculate the PPM index. The survey is not a population estimate, but rather compares the number of pheasants observed on the routes and establishes trend information. Survey routes are grouped into 13 areas, based on a local city, and the index value of each local city area is then compared to index values of the previous year and the 10-year average.

"Habitat continues to be at the forefront of the conversation and still remains a crucial factor in pheasant numbers," stated Hepler. "Bird numbers are higher in parts of the state where quality habitat conditions

still exist, primarily on grasslands including those enrolled in the Conservation Reserve Program as well as fields of cereal crops such as winter wheat. We continue to work hard in our Habitat Pays outreach efforts and in cooperation with landowners and partner organizations to provide an improved future for wildlife habitat in our state."

Public hunting opportunities are abundant in South Dakota. Over 1 million acres of publicly owned and private land leased through GFP's Walk-In

Area Program and the James River Watershed Conservation Reserve Enhancement Program is available in the primary pheasant range of South Dakota. The 2016 public hunting atlas and a web-based interactive map of public lands and private lands leased for public hunting can be found online at [www.gfp.sd.gov/hunting/areas](http://www.gfp.sd.gov/hunting/areas).

"Each year, the results of this survey are highly anticipated by those with a strong interest in South Dakota's hunting heritage. The availability of pheasants and pheasant hunting opportunities across the state this fall should serve to enhance that tradition," concluded Hepler.

South Dakota's traditional statewide pheasant hunting season opens on Saturday, Oct. 15, 2016, and runs through Jan. 1, 2017.



**DAKOTA  
PRAIRIE BANK**

Draper  
605-669-2401

Presho  
605-895-2595

Fort Pierre  
605-223-2337

Member FDIC

**ATM Locations:** Hutch's Cafe, Presho; Cenex, Murdo; Fort Pierre Bank Drive-up; Drifters, Fort Pierre; Longbranch, Pierre.

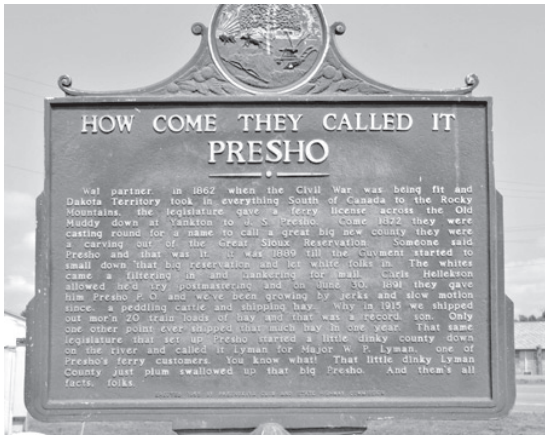
**Reuman Ag**



**Welcome Hunters**

Craig Reuman 605-222-1712

Logan Reuman 605-222-1710



Presho is located off I-90 with easy on/off access thanks to two exits #226 and #225. With a population of 500 it is the largest town in Lyman County.

Presho is home to the Lyman School District 42-1.

The high school and an elementary school for students pre-school through fifth grade are located in Presho, while the middle school and another elementary school are at Kennebec. Students are bused to the various schools.

The city is governed by a six member council elected by Wards, and an elected mayor. City hall is located at 316 N Main Street and is open Monday through Friday 8 a.m. -12 noon. The city council meets the first Monday of every month at 7 p.m. in the winter months and 8 p.m. during the summer months.

Residents of Presho are asked to keep the city beautiful by

## How come they call it *Presho*

### Government

City Hall	605-895-2337
City Shop	605-895-2434
City Library	605-895-2443
City Airport	605-895-9650
City Pool	605-895-9405

### Post Office

Post Office	605-895-2460
-------------	--------------

### Lyman School

High School	605-895-2662
Administration	605-895-2579
Gym	605-895-9555

maintaining their property. The city operates a restricted use rubble site, located north of town, and accepts construction and demolition debris for burial, trees/branches/untreated wood for burning, white goods and scrap metal for temporary storage and recycling, and yard waste. Winter hours are Saturday only 10 am to 2 pm, Nov. 1 thru March 31; and Summer hours start April 1<sup>st</sup> and are Mon. and Wed. 6 pm – 8 pm and Saturday 10 am to 2 pm.

City residents are asked to purchase license for any dogs in town to prove current vaccinations. Tags are available at city hall and expire April 30<sup>th</sup> of each year.

Building or moving permits are required. Check with city hall before proceeding with construction, remodeling or moving mobile homes or buildings into town.

### Utilities

City water/sewer	
Presho City Hall	605-895-2337
Electricity	
West Central Elec. Coop.	605-669-8100
Telephone/cable TV/Internet	
Kennebec Telephone Company	605-869-2220
Garbage Service	
Byre Brothers	605-234-5771

### Medical Services

Medical Services	
Stanley Jones Clinic	605-895-2589
Pharmacy	
Presho Community Pharmacy	605-895-6337

### Community organizations

Presho Chamber, Medicine Creek Lions Club, Western Lodge of the Masons, & Silver Leaf Chapter of Eastern Star, American Legion Post and Auxiliary.

### Parks/Recreation

City park with swimming pool, picnic shelter & tables, disk golf, horse shoes, sand volleyball, tennis, baseball field, basketball court, public rest rooms.

Main Street Merchants Park with picnic tables and gazebo

Pioneer Museum- Open Memorial Day to Labor Day  
Trap Shoot and Medicine Creek Golf Course

### Events

St. Patrick's Day Parade and Shamrock Shuffle,  
Scavenger's Journey, Firemen's Street Dance, Presho School Alumni Reunion, Lyman High School Reunion  
Lawn Mower Poker Run, Farm & Home Show,  
Puttin' around Presho.

## Presho Public Library

Librarian LaVerne Olson

605-895-2443



Hours: Monday - Saturday 2 - 5 pm  
Wednesday 2 - 6:30 pm

- Wireless internet
- Large print books
- Books on tape
- Videos

New selections available often  
~ 2 book fairs a year







## Presho Area Chamber Welcomes you to Presho

### Presho Area Chamber Members

A network of businesses helping each other & the community.

#### Chamber Members

AAA Pheasant  
ABR  
BankWest  
BankWest Insurance  
Buckshot Pheasant  
Hunts  
Comps Pheasant  
Hunting  
Christensen Real  
Estate  
Country Curl  
Dakota Mill & Grain

Dakota Prairie Bank  
Farmers Union Oil  
Garnos Ranch Hunting  
Golden Buffalo Casino  
Hair West  
Hutch's Cafe &  
Lounge  
Hutch's Motel  
Husman's Grocery  
Isburg Funeral Chapels  
Jet Lanes  
Jim Terca  
Kennebec Telephone

KPI Insurance  
Lyman County Herald  
LC Historical Society  
Lyman School District  
Lyman Fitness Center  
Medicine Creek Golf  
Course  
Mosquito Park  
Moore Building Supply  
New Frontier  
Campground  
Presho Livestock  
Presho General Store

Presho Pharmacy  
Ringneck Hunting  
Lodge  
Sanford Chamberlain  
ScottE. Enterprise  
Schoeny's Lodging  
Smithy Spraying  
Snake Den Lodge  
Stanley/Jones Clinic  
Thrift Store and More  
West Central Electric  
West River Flowers

Willis Vet Supplies  
**Individual Members**  
Annette Grummert  
Crystal Brakke  
Diane Hieb  
Donna Bowar  
Laverne Olson  
Lynn Dahl  
Paul Olson  
Tiarra Bowar  
Rod Bowar

Contact the Chamber for hunting, business & service information  
for the Presho area.

### Presho Area Chamber

605-895-9445 - toll free 1-800-895-9445  
[www.presho.net](http://www.presho.net)

### Chamber Events

- \* Trunk-or-Treat, October 31, 2016
- \* Hometown Holiday Open House Dec. 1, 2016
- \* Farm & Home Show, February 2017
- \* SD Amateur B-Ball Tourn., March 4-5, 2017
- \* Puttin' Around Presho, June 2017
- \* Scavenger's Journey, June 23-25, 2017

## PHEASANT HEAVEN LODGE

Presho, South Dakota



**(800) 894-3915**

stanlien78@gmail.com | www.huntingroosters.com

## Pheasant Hunting

row crop  
strips, dams,  
draws, and  
good cover



located south  
of Kennebec

**Corey and Meta Halverson**

31363 250th St. • Kennebec, SD 57544

**Home** 605-869-2534

**Corey** 605-280-4678

**Meta** 605-730-1954

meta@kennebectelephone.com

Call for rates - Very Affordable

## Brand New Location!



### Presho Community Pharmacy

Newly located in the back building of  
Stanley Jones Memorial Clinic

116 N. Main St. Presho, SD 57568

**Open: Mon. - Fri. 9:00 am - 5:00 pm**

**605-895-6337**

Large stock of over the counter medications, batteries  
& medical supplies

## SCHOENY'S LODGING

601 South Main. St., Presho, SD

### All New Lodge

- Sleeps up to 10
- Cable, Wifi, and private bathrooms
- Continental Breakfast
- Rooms Now available
- Hunters Welcome

**\* Great hunting packages available \***

Reservations available all year long  
**For more information**

Call Donna 605-295-0826 or Jim 605-295-0121

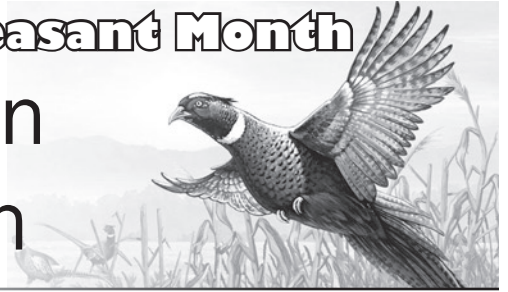
find us on Facebook  
@ Schoeny's Lodging  
for inside pictures





## Eat Pheasant Month

# Giving pheasant a shot in the field, and the kitchen



**Hannah Ruhlman,**  
Chamberlain SUN

It happens every year. I can't try to stop it. My only option is to embrace it.

My husband is a pheasant hunter, which means come October I start to accumulate pounds and pounds of pheasant.

"It's just like chicken!" He told me on my first encounter with the meat. Only he lied. It wasn't like chicken at all. Because, unlike chicken that can be

seasoned and cooked in a multiple of fashions and still come out juicy and delicious, I have found that pheasant needs to be babied in order to shine on the dinner table.

It's a difficult bird to get right. It appears many people give up before they start, which might be why pheasant is the 72nd most thrown away food – 2,200 pounds of pheasant is wasted every year, according to the Institute of Food Research (IFR).

Now, that's a lot of meat, especially when IFR

states it's the 22nd most avoidable food wasted.

So, how do we bring that number down? The answer is simple enough: we get cookin'. But, if one would do a simple Internet search for pheasant recipes, many of those recipes would suggest using hen birds, because underneath the beautiful feathers of a male pheasant is typically dry, tough meat.

Well, using hen meat is out of the question in South Dakota, since the birds hunters are permitted to shoot for sport are the male birds. However, it's not impossible to make that male pheasant meat tasty. Although two years ago I might have been screaming out a different message, it is possible. I've done it after much practice. Practice that has taught me there are some necessities for the process: proper storage, a marinade and a lot of patience.

Unlike chicken, which you can thaw out, season, and cook in a hot skillet or warm oven in hardly any time at all, pheasant can't be treated that way. It'll turn out dry and chewy. No one wants that, so don't be afraid to marinate the pheasant for a day or two, as it can remain safe in the fridge for three days. Once the pheasant has hung out in the marinade, cook it slowly in the oven. Most recipes won't go over 350-degrees. If you're a crock-pot kind of person, cook it on the lowest setting possible.

If you're thinking, "Girl, I don't have that kind of time!" there is another way to get that pheasant cooked and ready for casseroles and soups. It's also the way I typically like to cook pheasant: boiling. Now, we're not talking a high boil – we're not boiling pasta here.

continued on page 8

## PRESHO GENERAL STORE

Open 7am to 9 pm  
605-895-2562



- ATM now available •Hunting Shells
- Hunting License •Hunting Apparel

## BEER CAVE

"Only Beer Cave in Town"

- Bulk fuel/propane
- Credit Card pumps
- Cafe Xpress



## JB's Bird Cleaning

All Game Birds • Freezing Available



John Uthe  
8th St. & Main St.  
Prescho, SD  
605-280-8527

Professional courteous service

continued from page 7

Just get the water/chicken stock bubbling just enough. Then add the pheasant and simmer it until it's no longer pink. As stated, you can use water, but I prefer to toss in a few herbs and use chicken stock or broth for at least half of the boiling liquid for added flavor.

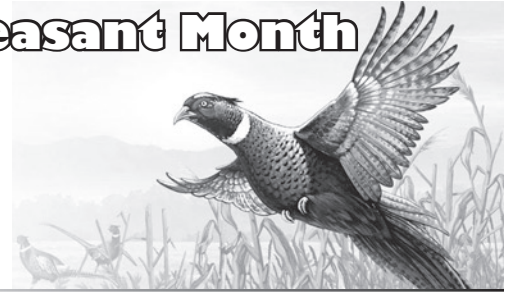
Once the pheasant is cooked through, let it cool for approximately 10 minutes before you shred it with a fork. After shredding, you could add BBQ sauce to make sandwiches, or cheese soup for burritos. Another option is making a Pheasant Noodle Soup or substituting pheasant for chicken

in Wild Rice Soup. If you're worried the meat is too dry, creating a soup is likely your best bet so it can stay moist as it sits in the soup.

If you're like me and you find yourself with more pheasant than a recipe calls for at the given time, the best way I've found to store the pheasant is freezing it in a bag with water. It will freeze solid and it won't be subject to freezer burn if it ends up sitting there patiently for its turn to grace the dinner table.

Just remember to treat it with the same amount of patience when you finally let it out, and embrace the new challenge of making pheasant tasty.

## Eat Pheasant Month



### Tender Bacon Pheasant Recipe

#### Ingredients:

- 4 small pheasants, cleaned and rinsed
- 1/2 pound of sliced bacon
- 10.75 oz can cream of mushroom soup
- 1 C of sour cream
- 1 C water
- 1 small onion, diced
- 1 (1 oz) package of dry onion soup mix
- 1 (4.5 oz) can of sliced mushrooms
- Salt and pepper to taste

#### Directions:

Place the pheasant evenly in a large slow cooker. Wrap and drape the bacon over the birds. Whisk together the remaining ingredients in a bowl and pour evenly over the pheasant and bacon. Cook on low for 6-8 hours or until pheasant is no longer pink.



## Country Curl

**Leanne Zirpel, owner**  
Presho, SD

Call for an appointment 605-895-2371

Stop by and visit the

## Lyman County Historical Society Museum

Along Hwy 16 in Presho      605-895-9446



**Open Daily**  
**Memorial Day to Labor Day**

If Closed Call **Bev Johnson** 895-2294  
to make an appointment

~ NOW

OPEN ~



## FOLEY'S GUN SHOP

### BUY - SELL - TRADE

### Guns and Ammo

Wide Selection of Long Guns, Hand Guns  
and Ammunition

**200 East K Street • Chamberlain**  
(located up behind Family Dollar)

Monday through Friday: 9 am - to 5 pm; Saturday: 8 am - 12 noon

## 605-234-2182



## Medicine Creek Golf Course

Welcomes visitors to play the  
9-hole, grass greens course located  
2 miles east of Presho.

**Open May - September**



Check out our Facebook Page for tournament dates, league information, and fun golf nights.

[facebook.com/MedicineCreekGolfCourse](https://facebook.com/MedicineCreekGolfCourse)



Power Ball & Lottery  
Scratch tickets  
sold here!



While in PRESKO stop in  
for your grocery needs at

## Husman's Grocery



Presho, SD 895-2535



HOURS: M-F 8 am - 6 pm ~ Sat. 8 am - 4 pm  
Sunday 8 am - 10 am

## Garnos Ranch Hunts, LLC

PO Box 119

Presho, SD 57568

[www.garnosranch.com](http://www.garnosranch.com)

e-mail: [hunting@garnosranch.com](mailto:hunting@garnosranch.com)

toll free 1-887-762-5900 or 1-605-895-2414

### Pheasant Hunting

is our specialty. We have top of the line hunting guides and dogs. With thousands of acres of bountiful hunting land comprised of CRP, tree groves, ponds, food plots, and roosting/nesting areas the land is bar none one of the best places to hunt.

We also offer duck, goose, prairie chicken, dove, turkey, deer, antelope, prairie dogs, and bass, walleye & northern fishing.

### Our Lodge

offers a scenic view of Medicine Creek. With 24 occupancy, a sauna, hot tub, swimming pool, three fireplaces, game room with a pool table, big screen TV, a wet bar, and sporting clay area, this ranch style lodge welcomes you.



Housing available for family reunions, class reunion, etc.

# FUN TO SPARE

FOR DELIVERY CALL  
605-895-2559

**RELAX AND UNWIND  
AFTER A DAY OF HUNTING WITH  
FOOD, FUN, & GOOD COMPANY**

- ⇒ BOWLING
- ⇒ STEAKS, BURGERS
- ⇒ FULL SERVICE BAR
- ⇒ BLACK LIGHT BOWLING
- ⇒ DARTS
- ⇒ PIZZA
- ⇒ CASINO
- ⇒ ON/OFF SALE LIQUOR

## Jet Lanes

206 N. Main  
downtown Presho, SD

# The under appreciated little guy



## Down the river of my memory

Historical Vignettes by  
Travis Hutchison, Bedford, TX

Chinese Ring Neck Pheasant ... brought to the area in 1898 ... designated State bird in 1943 ... big, beautiful, economic booster ... known around the world ... Loud squawker ... Thinks he is more beautiful than a proud pea-cock ... probably is. Phillip, the pheasant, proudly struts his stuff in full regalia trying to attract Phyllus the hen. Yes, he can strut, show his colors, and emit a crackling crow, but he doesn't communicate well, doesn't say sweet nothings to Phyllus the hen, doesn't sing a romantic song. He just doesn't get it. Typical male!

Prairie Chicken ... native to the area ... fascinating, rare, unique drumming sound plus a dance so engaging that Native Americans imitated the dance in their festivities. I was riding my horse, checking cattle, in rolling hills close to the White River south of Presho, when I heard an unfamiliar booming sound coming from the top of the ridge. I crawled up "stomach flat" towards the top of the ridge. There on a buffalo grass dance floor, I watched Peter, Paul, and Prance the Prairie Chicken roosters, drumming and dancing. They were trying to impress the surrounding hens. They

could have attracted a mate more effectively and with less effort if they would have just had a good song to sing, maybe a sweet song, a love song. But Prairie Chickens can't sing. I saw no pairing of the roosters and hens. The roosters just didn't get



A Western Meadowlark perches on a barbed wire fence

it. Typical males!

But, Larry the Western Meadowlark ... now there is a bird of a different feather. That bird can sing! Sure, he sticks out that bright yellow breast with the black dinner tie draped around his breast. But he has more than looks. He sings beautiful love songs to a special female. He has a romantic heart as evidenced by his melodious, flutelike songs. Now I do not know the words he is singing, they are in Mead-

owlark language. But any female will tell you that a male that can communicate in a meaningful, heart felt, and beautiful way, is more romantic than a big famous guy strutting his stuff, or some other guy drumming and shaking his feet. Larry the Lark will always win the female's heart. He gets it.

Larry is very confident in his song. He frequently sits on top of an old fence post, clears his voice and lets the opera begin. Now what female would not be attracted by self-confidence, bravery,

people because when Larry is back you know the long winter is over. He announces that spring has sprung with a melody that wafts out over the prairie.

But hold on! The little Lark isn't finished. Phillip the Pheasant's main menu is seeds, grass and an occasional insect if it is sleeping on a leaf. The same is true of Peter the Prairie Chicken. But the little guy, Larry, he is the "devil of death" to insects. Larry personifies a black hole in space sucking in all insects within its gravitational pull. He is the Lion of the African Serengeti, devouring the gazelles. Larry Lark is a special operation warrior throwing a hand grenade into the insect population. We should pay him for consuming the destructive insects, and more than minimum wage, I'd say at least \$15 per hour!

Let us take a lesson from little Larry the Lark. Let us stand up for the little guy or gal, people who are the under-appreciated, the less-noticed, the less gifted/talented as well. They are valuable and have a contribution to make in our society.

Back to Larry Lark: the next time you see Larry sitting on an old fence post, tell him you appreciate him even if he is the little guy. He might even sing you a song. If he does, please applaud.

*Travis Hutchison lives in the Dallas/Fort Worth area near many of his children and grandchildren, but still embraces his South Dakota heritage.*

and beautiful singing like that? If Larry was running for a highest office of the country, he would only get delegates from the prairie states, he does not have much name recognition. Larry is under appreciated outside the flat lands. Succinctly stated, the little guy with the romantic, beautiful song is under appreciated!

But hold on! Larry Lark can do more than sing. He lifts the mood of the prairie





*The best pheasant hunting in Central South Dakota!*

**Preserve & Wild Hunts**

**Sept. 1 thru March 31**

**Year-round lodging, call to reserve**



**Casey & Jamie Griffith  
Cordie & Marlys Schlomer**

PO Box 220, Presho, SD 57568

(605) 895-2452 \* Cell: (605) 280-9683

**www.thesnakenlodge.com**

## **Additional lodging North of Presho**

- located 11 miles N. of Presho
- within Ft. Pierre National Grasslands
- 7 bedrooms / 5 bathrooms
- can accommodate a large group
- excellent grouse hunting area



**Your local Redneck  
Blinds Dealer. See units  
on display at the lodge**

**WASH, STORE & MORE**  
**(605) 895-2452**  
North Main St. Presho, SD 57568

## **McNaughton Bird Cleaning**

308 S. Pine Ave., Presho, SD  
(located 2 1/2 blocks north of  
Hutch's Cafe, light green house)

**We will clean, bag, freeze & store  
your birds during your hunt.**

We have 25+ years of experience  
in the bird cleaning business.

Neil McNaughton owner

**605-208-0243**

**Transport receipts available for my customers**

**FARM BUREAU FINANCIAL SERVICES**

Farm | Home | Auto | Investments  
Life Insurance | Long-Term Care  
Business/Commercial Insurance

**(605) 895-2212**  
208 E 9th St  
Presho, SD 57568

Cody & Danielle Palmer

## *Mademoiselle Hair Salon*

Main Street, Presho

**605-895-2581**

- \* colors, perms, cuts  
& reconditioning
- \* full line of hair  
care products

- \* facials
- \* facial waxing
- \* tanning beds



*Call for an appointment.  
Walk-ins welcome!  
605-895-2581*

# Town of *Kennebec*

Kennebec is the county seat of Lyman County, where all county offices are located.

The town is governed by a five-member town board that meets the first Monday of each month. A member of the board serves as president. Currently, the Kennebec Finance office is located in the Main Street Plaza building and is open Monday thru Friday. The town of Kennebec oversees the operation of the Kennebec Housing Authority which provides one to three bedroom homes based on income. The Housing office is in the Finance office.

The city operates a restricted use rubble site, located east of the 4-H barn, check with the finance officer for hours of operation.

Building or moving permits are required. Check with city hall before proceeding with construction, remodeling or moving mobile homes or

buildings into town.

Community events include, 4-H Achievement Days, SDSC 4-H Rodeo, Jamie Collins Memorial Poker Run, Kennebec School Alumni Reunion, Lake Byre Day, T&C Club Business Appreciation, Horseshoe leagues, Firemen's pancake breakfast.

## Utilities

City water/sewer	Kennebec Finance office	605-869-2263
Electricity	West Central Elec. Coop.	605-669-8100
Telephone/cable TV/Internet		
Kennebec Telephone Company		605- 869-2220
Garbage Service	Byre Brothers	605-234-5771
	Heartland Waste	605-842-3692
Medical Services	Kennebec Clinic	605-869-2872

**Community organization:** Kennebec Town & Country Club, American Legion & Auxiliary

## Government

Kennebec Finance	605-869-2263
Kennebec Housing	605-869-2338
Housing Shop	605-869-2154
Library	605-869-2207

## Post Office

Post Office	605-869-2224
<b>Lyman School</b>	
Middle School	605-869-2213
Kennebec Elem.	605-869-2214
Gym	605-869-2437

## American Creek Conservation District

*Serving Lyman County Since 1938*



The American Creek Conservation District specializes in the designing, planning, and planting of tree/shrub wildlife habitats and windbreaks. Tree planting can be designed to establish maximum wind protection, winter food for wildlife, and longevity. Working hand in hand with the USDA Natural Resources Conservation Service, cost sharing is available on some tree planting.

The District has the equipment and manpower to do everything from start to finish: prepare the

plot by tilling or disking the soil, planting the trees and laying down tree fabric, if desired. The tree fabric reduces soil moisture loss, prevents weed competition, and promotes accelerated tree growth.

Trees reduce soil loss, energy loss, water loss and runoff. Trees benefit everyone and everything when designed and planted correctly.

The District can also maintain the tree plot. If you live out-of-state, the District staff can handle your tree planting project from start to finish, plus maintain the plot.

## 2016 District Prices and Services

### Machine Tree Planting By Spacing

**Under 6 ft. Spacing**  
.....\$5.30 per Rod Row

**Over 6 ft. Spacing**  
.....\$4.80 per Rod Row

**Hand Plants**  
\$2.00 each

### Mowing & Chiseling

\$80.00 First Hour  
- We will custom till tree plots, food plots, gardens and arenas.  
\$70.00 for every additional hour

### Tree Fabric

\$0.64 per foot - Machine Installed  
- We will install and staple fabric around your trees.

### Millborn Seeds

The District is a Millborn Seed dealer and are competitive on cover crop and grass seed mixes.

E-mail, call or stop in the office and get an estimate for 2017!

**Phone: (605)-869-2238 ext. 3      email: [americancreekcd@sdconservation.net](mailto:americancreekcd@sdconservation.net)**

**PO Box 156 - 110 South Main Street, Kennebec, SD 57544-0156**

Education programs and materials offered without regard to age, race, religion, gender, disability, political beliefs, marital status, or national origin. The American Creek Conservation District is an equal Opportunity Employer.



# www.petersonlandauction.com



310 Sorensen Dr. | PO Box 498  
Chamberlain, SD 57325  
Office 605.234.4214 | Fax 866.399.5622  
CHISUM PETERSON | BROKER-AUCTIONEER  
Cell: 605.730.4214  
CINDY PETERSON | BROKER-ASSOCIATE  
Cell: 605.730.4213

• Residential • Commercial • Ag/Recreational • Auctions of all kinds



## Big Prairie Hunts

- Approx. 2400 Acres of Prime Hunting Ground
- Full Service Package Includes Lodging,  
Home Cooked Meals & Bird Cleaning
- Guided & Unguided Hunting
- Located South of Kennebec
- Now Offering Preserve Hunts

Eric Halverson  
(605) 280-0703

[bigprairiehunts.com](http://bigprairiehunts.com)

[bigprairiehunts@hotmail.com](mailto:bigprairiehunts@hotmail.com)



# Featured Properties



## Lyman County Farm

- 314.42 +/- Deeded Acres of Presho, SD
- A great farming and hunting property



## Haakon County Ranch

- 1320 Acre, Council Bear Draw Ranch
- West of Pierre- Ft. Pierre, SD



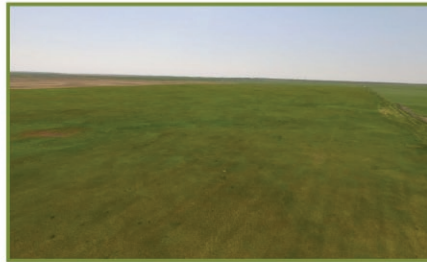
## Jones County Cropland

- 480 Acres Cropland & Grassland
- South of Ft. Pierre, SD



## Hughes County Irrigated Cropland

- 349.37 Acres South East of Pierre, SD on the Missouri River



## McPherson County Hayland

- 68 Acres of Hayland , west of Long Lake



## Peoria Flats Outlook

- 2.5 acre lot overlooking Lake Oahe north of Pierre



## Horse Country Estates

- 10 Acres 11 miles South of Ft. Pierre
- Prime Horse Property, Riding Area
- Overlooking Lake Sharpe



## Haakon County Cropland

- 400 Acres North of Midland, SD
- Includes 130 acres winter wheat



## Spring Creek Recreational Lots

- North of Pierre, SD



**Todd Schuetzle**  
**605-280-3115**  
todd@placetohunt.com



**Graham Schuetzle**  
**605-220-4014**  
dakotalandco@gmail.com

**www.DakotaLandCo.com**

Be sure to go and look at the drone videos of each of these properties





# PHEASANTS FOREVER BANQUET

Join the nation's leading  
habitat organization for a  
night of food, fun, and friends!

Banquet admission includes dinner, toasting and boasting with like-minded outdoor folks, chances to win great prizes, raffles, and Pheasants Forever membership which includes a one year subscription to *Pheasants Forever Journal of Upland Conservation* (five issues), and the opportunity to make a difference for habitat and conservation education in *your* community.

**LYMAN COUNTY PHEASANTS FOREVER BANQUET**  
**KENNEBEC GYM**

**SATURDAY, OCTOBER 22, 2016**

**Raffles & Games 6:00**

**GIVING AWAY 18 GUNS!**

**Prime Rib Dinner at 7:00**

**LIVE AUCTION TO FOLLOW**



# Parker Shotguns

## Collectible but also usable

**Lucy Halverson,**  
Publisher/editor

A group of Parker gun collectors traveled from around the country, Alaska to Texas, California to Indiana, for their first 3-day pheasant hunt in Lyman County last October. While sitting around the break-fast table at Comp's Hunting Lodge near Presho, the men were happy to display and talk about their Parker collections prior to the start of hunting.

Anytime you have 3 or more of a similar item it's considered a collection. Several of the hunters admitted they owned

many more than three!

Charlie Herzog, a life member of the Parker Gun Collectors Association, explained that while the old guns are collectible they are also usable.

Parker is one of the oldest shotgun makers in the US and was in production from 1868 until 1933



when they sold out to Remington. When Remington closed the Parker plant in 1942 that was the end of production until the 80's when the repro-



**Top:** Parker guns are known for their fine engraving.

**Left:** Several of the guns brought to Lyman County were 80 to 100 years old.

ductions were released. Various grades of SXS and single barrel shotguns were made, and Parker was known as an extremely reliable. They also had

some of the finest engravers and the guns are decorated with intricate engravings and the year of production.

The early Parker guns had a drop at the comb of 2 inches and the heel 3 1/2 inches, which requires holding the shotgun differently than today's modern guns.

## Need Equipment Storage?

Your options are endless  
Call for Quotes Today!

# LEIMBACH

CONSTRUCTION INC.

605-223-2738

**Bill Leimbach**

Full Service General Contractor since 1994

- Engineered Steel Buildings • Post Frame Buildings
- Concrete Construction •

1001 W. Bass Drive, Ft. Pierre, SD

**Office:** 1-605-223-2738

**Email:** bill.leimbach@leimbachconst.com

**CHIEF**  
BUILDINGS  
a division of Chief Industries, Inc.

**LESTER**  
BUILDINGS

**SCHWEISS**  
THE DOOR LEADER



## ScottE Enterprises

*Feed, Seed and a WHOLE lot MORE!*



**605-280-3445**

Main Street, Presho

**Monday -Friday**

**8:00 am - 5:00 pm**



*Call us anytime, if you need it, we might have it!*

## Sundall Law Office, Prof., LLC



*Real Estate, Probate,  
Trust & Related Law*

Herb Sundall  
205 S. Main St.  
Kennebec, SD 57544  
(605) 869-2233

*Open Monday - Friday  
9 am - 5 pm*

## Antler Ridge Lodge

Hamill, South Dakota

Located in south central South Dakota, an equal distance from Gregory, Winner and Chamberlain. Full service hunting lodge, includes meals and guide service. Accommodates up to 20 hunters. Open year round and available for family reunions, weddings, meetings, etc. The lodge features a large backyard, fire pit and several covered decks to relax.

Let us be your destination place.



Steve & Donna Kubik

**605-842-3054**

[www.antleridgelodge.com](http://www.antleridgelodge.com)

[skubik@gwtc.net](mailto:skubik@gwtc.net)



## Hutch's Cafe & Lounge

**605-895-2641**

*Cafe opens at 7 a.m. ~ Lounge at 5 p.m*

Meet your friends at Hutch's  
Enjoy great steaks nightly.

Stay at

## Hutch's Motel

**605-895-2591**

PO Box 160, Presho, SD 57568



## Need Groceries?



- Excellent fresh meat counter
- Sandwiches • Deli salads
- Superior fresh fruits & vegetables
- Ice, beer, pop • Coolers

### BJ's Food Center

Main Street Kennebec, SD

**605-869-2256**

8:00 am - 6:00 pm Monday thru Friday

8:00 am - 5:00 pm Saturday

Closed Sunday

## Camp at Kennebec KOA

- Full Service
- Electricity
- High speed internet available
- Convenience store
- Beer/Liquor Off-Sale
- Coin Operated Laundry Facility
- Heated Shower/Restrooms

Open May 1 - Oct. 30

I-90 Exit 235 Kennebec SD

605-869-2300

• **Reservations (800)562-6361**

email: [camp@kennebeckkoa.com](mailto:camp@kennebeckkoa.com)

## Welcome to Lyman County

**"A SPORTSMAN'S PARADISE"**



Steve Halverson  
Halverson Hunts, LLC  
Kennebec, SD 57544  
[www.halversonhunts.com](http://www.halversonhunts.com)  
605-222-0270

## Gerry's Motel



605-869-2210 • 1-800-Bud-Host (for reservations)

I-90 Exits 235 • Kennebec, SD 57544

email: [budgethostinn@kennebectelephone.com](mailto:budgethostinn@kennebectelephone.com)



- Continental breakfast • WiFi
- Motel rooms with outside entrances
- Kevin's Bird Cleaning Services available on site

Make new friends or meet up with old  
ones at our on site bar/lounge

**The Prairie Dust Bar.**



## Town of *Reliance*



The town of Reliance is on the eastern side of Lyman County at the intersection of I-90 and Hwy 47, which goes north towards the Lower Brule Sioux Indian Reservation.

The town is governed by a three-member town board that meets at the town hall the first Monday of each month. The town hall is open only part-time, please call the finance

### Utilities

#### City water/sewer

Reliance Town Hall 605-473-5557

#### Electricity

West Central Elec. Coop. 605-669-8100

#### Telephone/cable/Internet

GoldenWest 1-855-888-7777

#### Garbage Service

Byre Brothers 605-234-5771

#### Post Office

605-473-5232

Community organizations: Reliance Area  
Community Development, American Legion &  
Auxiliary.

officer for days and times. The city operates a very restricted use rubble site, located on the west side of town, available by appointment only. Contact the finance office for assistance.

The city park is located near Reliance Lake features playground equipment, an outdoor basketball court, a baseball field, and a concrete walking path.

Building or moving permits are required. The town does have a zoning ordinance, and residents should check with the finance officer before proceeding with construction, remodeling or moving mobile homes or buildings into town.

Community events include, RACD Christmas Carousel, Dinner Theatre, Firemen's wild game feed, American Legion Sunday Brunch, every second Sunday of the month at the Legion hall.

*Hunting for a place to fuel up before  
heading out to the field or the river?  
Make a stop at:*



## Hieb's Cenex C-Store

- Food - Cold Beer, Pizza & Soda
- Hunting Supplies
- Pay-at-the-pump Gas & Diesel
- Tire Repair

**I-90 & Hwy 47 - Exit 248**  
**Reliance • 605-473-5388**

## The Golden Buffalo Casino

### Prime Rib 12 oz. ~ \$9.99

Served everyday after 11:00 am

Full salad bar begins at 5:00 pm

- \* Delicious Food
- \* Nightly specials served in the restaurant  
(after 5:00 pm)
- \* Slot machines from a penny to \$100
- \* ATM
- \* Newly renovated motel with 38 rooms  
(\$70/ double occupancy)



**Call 605-473-5577**  
**for reservations**

Lower Brule, SD  
Exit 248 on I-90  
15 Minutes North to  
Lower Brule



## The Muddy Boot hosts annual Youth hunt

The Lyman County Youth hunt was held October 3-5, 2015 in the rain at the Muddy Boot hunting lodge northeast of Vivian. Rod Sather, proprietor and hunting enthusiast, regularly hosts a group of young hunters for the annual youth hunt. All the young hunters were reminded of gun safety, got some shooting in, and had a lesson in bird and gun cleaning. Those attending included; I to r; Mason, Avery, Mark Erickson, and Jake, from West River; Pheasants Forever Life Members Les Johnson and Bryan Foote, Joel Colton, Life Member Hunter, Nick, from East River. Dogs, Pheasant Forever Life Members Dakota and Smoke. The hot chocolate tasted good after a cold and damp but successful hunt.

## Big winners at 2015 Pheasants Forever Banquet

The Kenenbec gym was packed with hunters Saturday, Oct. 17 2015 for the local Pheasants Forever banquet and fundraiser. Pictured are a few out of town winners with their guns they won.



This year's Pheasant Forever Banquet will be held the second Saturday of hunting season, Oct. 22 at the gym in Kennebec.

## Buckshot Pheasant Hunts LLC



CRP, corn, milo stalks, grass pastures, grass draws, for hunting enjoyment.

**Individual group hunts • Lodging Available**  
**Dogs are welcome**

(we have our own dogs that go on the hunt with us)

**Bird Cleaning and storage available**  
(you will receive your own birds back)

**Ron Brodrecht**

**PO Box 447 • Presho, SD 57568**  
**605-895-2508 or 605-730-0814**

## THRIFT STORE & MORE

**121 N. MAIN, PRESNO, SD**

**605-895-MORE (6673)**

### Hours:

**Thursdays 10 am - 5 pm**

**Fridays 10 am - 5 pm**

**Saturdays 10 am - 2 pm**



**US ON FACEBOOK**

**Weekly Specials posted  
and printed in the local newspaper**

### Clothing-

Men, Women, Juniors & Kids

**Shoes**

**Boots**

### Hunting Supplies

Hats, jackets, & pants

**Winter Clothing**

Stockings, gloves & scarves

**SECOND HAND PRICES, FIRST-RATE SELECTION**





**Presho** • **Reliance** • **Draper & Murdo**  
605-895-2682      605-473-5581      605-669-2771

**Open 8:00 am**  
**Mon. - Sat.**  
located on Main Street  
Presho & Reliance

**Call us for  
all your farm  
supply needs.**

**Call us for all your bulk  
petroleum needs.**

- Cenex Field Master Diesel - Cenex Road Master Diesel
- Unleaded, Ethanol & E-10 gas - LP gas

Farmer's Union Oil Co.

# THE PRAIRIE POST

**605-895-2510      Presho, SD**

**Saloon, Gaming Hall, & Convenience Store**  
**7 am - 10 pm (w/extended summer hours)**

**Saloon Open till 2 am**  
**Nightly Happy Hour**



**Hunting supplies and  
South Dakota souvenirs**



- \* ATM
- \* Full Service Bar
- \* Snacks & Pop
- \* Weekly Specials
- \* Gas & Diesel
- \* Beer
- \* Pay at the pump 24 hours

# Keeping Fido in tip-top shape

**Dr. Joy Assman,**  
Willis Vet Supply, Presho

As fall approaches so does hunting season. This is a great time to remind everyone who loves this busy time of year to keep yourself and pet safe. It doesn't matter if your dog is bred to hunt, or is a couch potato remember hunting can be a lot of fun but also dangerous. Without proper safety measures dogs can get injured running through the fields or maybe even be mistaken for game. Putting a bright colored

vest, bandana, or reflective collar on your dog may not only protect from the undercover, but also keep it from being seriously injured. Know the area you are going to and make sure Fido receives proper vaccination for anything that he may encounter. Heart worm, flea and tick medicine along with Lyme, leptospirosis, parvo, rabies, rattle snake vaccinations may be beneficial. Rattle snake vaccine is administered initially 2 doses given a month apart and followed by an annual booster. The vaccine works by stimulating the



dog's immune system and produces antibodies specific to the toxins found in the venom of rattle snakes. This vaccine does not eliminate the effect of the snake bite completely but in most cases substantially reduces the severity of the bite. If your dog does get bitten, keep them as quiet as possible until you can get to a veterinarian. There are a lot of variables on how your dog will act if it gets bitten. Where the animal is bitten, size of the dog, amount of venom injected and how each individual reacts to the neurotoxin these are some of the variables we consider when offering treatment. The best is to reduce the chance of being bitten by staying away from snake havens. Prairie dog towns, old buildings, and rocky slopes are just a few places snakes like to hang out. Staying away from them and always be aware of where your dog is.

Having your dog microchipped and wearing a collar with current tags is a great idea and an easy way to get reunited with your hunting buddy if you become separated. If you are walking near a

busy road make sure you know where your dog is at all times. Use a lead to control your dog, many accidents happen when you least expect it.

Make sure to keep your dog safe and healthy during hunting season by keeping them in tip top shape. Regular exercise and a balanced diet keeps your dog in good body condition for that first big weekend. Make sure you have plenty of fresh water on hand for the hunt. Frequent stops allowing your dog to rest, drink, and time to cool off. Even when it is cool outside your dog is working hard and building body heat making it easier for them to overheat. Frequent snacks of dog treats is good to give your pet. Don't feed Fido a big meal prior to the hunt, and please no steak afterwards for a job well done. Dog food is the best most balanced meal. Check the dog's coats after hunts for scratches, cuts or burrs. Also inspect the pads of their feet for cuts that or thorns that may hurt them. With this in mind I wish you and your furry friend a happy and safe hunt.



*No need to hunt around for a  
vet give us a call.*

Countryside Vet Clinic, Kimball  
605-778-6111 or 605-730-0106

Chamberlain Vet Supply, Chamberlain  
605-734-6599

**Willis Veterinary Supply, Presho**  
605-895-2438

*Dr. Joy Assman*



## Looking for information about the Chamberlain/Oacoma area?

Contact the Chamber of Commerce for:

- Local Business Information
- Hunting Services & Lodges
- Calendar of Community Events




## Chamberlain/Oacoma Area Chamber of Commerce/CVB



115 W. Lawler Ave.  
Chamberlain, SD 57325  
(605) 234-4416  
[www.chamberlainsd.org](http://www.chamberlainsd.org)





## Akta Lakota Museum & Cultural Center

*Welcome all hunters to  
Chamberlain/Oacoma!*

**Explore the  
rich culture  
of the Plains  
Indians. Shop  
central South  
Dakota's finest  
Native American  
Gift Shop!**

**Hours thru October 31<sup>st</sup>:**  
8 am - 6 pm Monday  
thru Saturday  
9 am - 5 pm Sunday  
*Located on the campus of  
St. Joseph's Indian School  
1301 N. Main St.  
Chamberlain, SD*  
**[aktalakota.org](http://aktalakota.org)  
(605) 234-3452**



## Halvorson Oil & Repair

- Sandwiches
- Snacks
- Ice & Pop
- Off Sale Beer

- ATM Machine
- 24-hour Pay-at-the pump
- Gas & Diesel

- Blended Fuel E10 up to E85
- Tire Repair & Auto Parts
- Oil changes & auto repair

**SEASONAL  
ITEMS**

- Safety Orange Items
- Shotgun Shells



**OPEN YEAR ROUND  
7 am - 10 pm**

Kennebec exit 235 off I-90  
605-869-2251

## Pheasant & Grouse Hunting

**THE OLD FASHIONED WAY!**

## Wild Birds Unguided Hunting

## Huston Ranches, Inc.

### North of Kennebec

**Call 605-730-0001 or 605-869-2538**

## The Village of *Vivian*

The unincorporated village of Vivian is located on the western side of Lyman County and is home to around 120 people. The Vivian Sanitation District oversees the town's sewer system and garbage pickup.

A city park on Main Street provides picnic tables and a playground for use by residents.

Vivian is served by the Lyman School District 42-1, which provides transportation to the high school and elementary in Presho and to the middle school in Kennebec.

Community organizations include the Vivian Community Club, the American Legion Post and Auxiliary, and Vivian Fire Department.

The local organizations are active throughout the year hosting numerous events including, business customer appreciation, holiday picnics on Memorial Day and Labor Day, Syttende Mai Parade & Celebration and the firemen's annual Mountain Oyster feed the third Saturday of pheasant season.

### Utilities

#### Sewer/Garbage service

Vivian Sanitation District 605-683-4455

#### Water:

West River/Lyman-Jones Rural Water 605-669-2931

#### Electricity

West Central Elec. Coop. 605-669-8100

#### Telephone/cable TV/Internet

Golden West 1-855-888-7777

**Post Office** - open 8 am to Noon 605-683-4655

### Subscribe to the Lyman County Herald

Your source for news in Presho, Kennebec,  
Vivian, Reliance and Iona.

Call 605-895-6397

[www.lcherald.com](http://www.lcherald.com)

## Patrick Oil

Bob Patrick

*Fuel, Oil, & Tires*

Vivian, SD

605-683-4455




**Vivian Motors**  
Keith Patrick  
*General Repairs*  
Vivian, SD  
605-683-4455



**DAKOTALAND**  
BIRDSEED COMPANY  
Craig Reuman  
& Rod Diedrich  
Vivian, South Dakota  
605-683-4175

## Vivian Fire Department Annual Fund Raiser

**Saturday, Oct. 29th**  
**@ 6:00 pm**  
**Vivian Community Hall**

Rocky Mountain  
Buffalo Mountain  
chili Oyster  
Feed Baked  
Beans

**including 2 Gun Raffles**

**BYOB**





**OPEN:** Mon., Wed.-Fri: 8 AM-5 PM ~ Tues: 7 AM - 7 PM

- Walk-Ins Welcome • Flu Shots •
- Immunization Clinic • Acute Care

**Katie Urban PA-C**

Please call ahead to schedule an appointment.



**Convenient. Connected. Committed.**

Kennebec • 605-869-2211 or 1-800-308-2322 Vivian • 605-683-4141  
www.bankwest-sd.com Member FDIC



**Protecting What Matters Most**

221 N. Main Ave. Presho • 605-895-9422 or 1-800-895-9422

Insurance products are not deposits, not FDIC insured, not insured by any federal agency, not guaranteed by any bank. This institution is an equal opportunity provider.

HOME • HEALTH • LIFE • AUTO • FARM • CROP • BUSINESS

Call 605-869-2235  
for details Kennebec, S.D.  
**Dakota  
Hotspots, Inc.**

Shelter Belts - CRP  
Cane - Corn  
Wooded Creek Bottoms

~HUNTS AVAILABLE~  
Pheasants - Ducks  
Grouse - Geese  
Prairie Chicken  
White Tail Deer  
Mule Deer



- Located 2 miles north and 3/4 miles east of Kennebec.

- Two full service  
lodges: 40 beds, hot  
tub, pool & foosball  
tables.

- Home cooked  
breakfast, lunch &  
dinner.



Off season contact: Mark Bogue at 605-372-7768  
or Percy Lieuwen at 605-360-2734

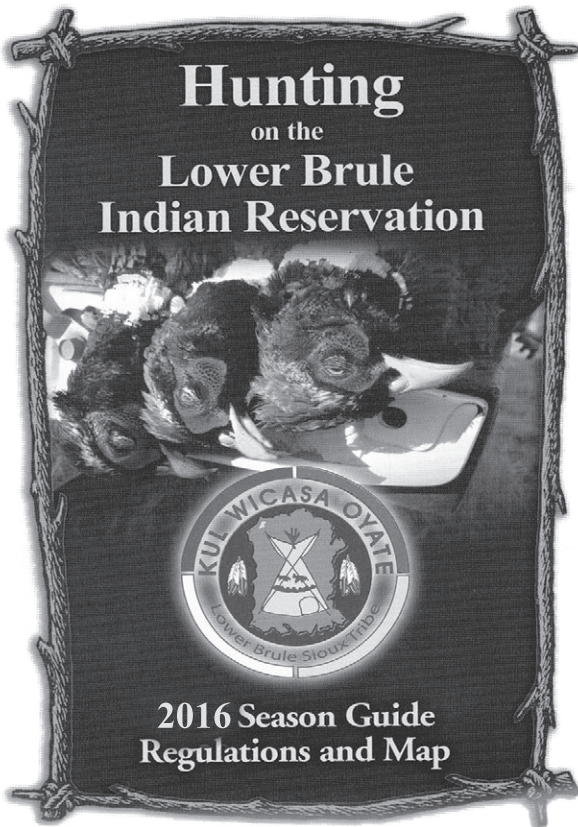
# Marie's Taxidermy

Over 35 years of  
Experience



**BIRDS ~ GAME HEADS**  
**PHEASANT FEATHER WREATHS ~ BIRD CLEANING**

304 Main Ave • Oacoma, SD  
(605) 734-6082



## Lower Brule Sioux Tribe Wildlife Fish & Recreation Department

*We offer excellent hunting opportunities for*

### **Waterfowl**

Ducks and Geese

### **Upland Game Birds**

Sharptail Grouse, Dove, Pheasants,  
Prairie Chicken and Turkey

### **Big Game**

Elk, Mule Deer, Whitetail Deer, Buffalo  
and Antelope

### **Coyotes**

**LBST Wildlife ~ 605-473-5312**

[www.lbst.org](http://www.lbst.org) - [www.lowerbrulewildlife.com](http://www.lowerbrulewildlife.com)

[benjanis@lowerbrule.net](mailto:benjanis@lowerbrule.net)



## Another successful year for Turn In Poachers Program



PIERRE, S.D. – As the fall hunting seasons approach, South Dakota Game, Fish and Parks (GFP) is reminding citizens to contact the Turn in Poachers (TIPs) Hotline when they observe illegal hunting, fishing and trapping activity. The program provides an important avenue for citizens to report violations, and in the process, prevent the loss of fish and wildlife that can result from these illegal actions.

“In the annual reporting period from July 1, 2015, through June 30, 2016, the TIPs program resulted in 193 arrests,” GFP law enforcement program administrator Andy Alban reported. “Our calls more than doubled since last year, which proves that the program works, and our citizens are concerned about South

Dakota’s fish and wild-life resources.”

During the past year, the TIPs program reported 449 investigations initiated through citizen reports, leading to 193 arrests, \$30,794 in fines and \$13,900 in liquidated civil damages.

Callers can remain anonymous and are eligible for rewards in cases that lead to an arrest. Rewards may range from \$100 to \$500, depending on the case. Higher rewards may be offered in extreme cases. Last year over \$4,000 in rewards were paid.

The TIPs program began in 1984, and since that time, citizens have generated over 11,200 investigations that have led to 3,900 arrests.

“We are grateful to the men and women who have cared enough to call,” said Alban. “Each and every report is integral in the effort to curb poaching and other illegal activity in our state.”

Individuals may call the TIPs hotline at 1.888.OVERBAG (683-7224) to report violations, or report online at [tips.sd.gov](http://tips.sd.gov).

### *Church Directory*

#### **Christ the King Catholic Church - Prescho**

Sunday Mass: 10:30 am Saturday Services: 4 p.m.

#### **St. Michael's Catholic Church - Kennebec**

Sunday 9 a.m.

#### **St. Mary's Catholic Church - Reliance**

Saturday 7 p.m. (after Nov. 1st, 5:00 p.m.)

#### **Evangelical Lutheran Church of America**

Prescho Sunday 8:30 a.m.

Vivian Sunday 10:00 a.m.

Kennebec Sunday 11:30 a.m.

#### **Zion Lutheran Missouri Synod - Prescho**

Sunday Service: 9 a.m. - Monday 6 p.m

#### **Trinity Lutheran Missouri Synod - Reliance**

Sunday Services: 11 a.m.

#### **United Methodist Church**

Prescho Sunday 9 a.m. & Wednesday 6 p.m.

Kennebec Sunday 10:15 a.m.

Reliance 11:35 a.m.

*Lyman County Churches welcome  
visitors to worship with them.*

### *Greater Lyman Foundation*

serving the communities of

Prescho, Vivian, Kennebec, Reliance, Lower Brule,  
Iona & Oacoma

*“GLF to enrich and promote  
the future of the Lyman area.”*

The Greater Lyman Foundation (GLF) is an endowment fund created to benefit Lyman County communities by pooling the generosity of donors to fund grants to charitable and civic causes. Each year, several thousand dollars flow from the endowment to support the work of dedicated groups in our towns, funding projects that might otherwise be left undone.

Your tax-deductible donations are invested back into our Lyman County communities to further the work of the many people who keep our emergency services, schools, parks, senior and youth services and neighborhoods strong and vibrant.



For more information or to make contributions contact:

**Greater Lyman Foundation**  
**PO Box 187**  
**Kennebec, SD 57544**

# Index of Advertisers

Akta Lakota Museum .....	23	Golden Buffalo Casino .....	19	Palmer Insurance Agency .....	11
Al's Oasis .....	inside back	Hair West Salon .....	25	Patrick Oil, bulk, fuel/tires .....	24
American Creek Conservation District .....	13	Halverson Hunts .....	18	Peterson Land Auction .....	13
Antler Ridge Lodge .....	17	Halverson, Corey & Meta Hunting .....	6	Pheasants Forever .....	15
BankWest .....	25	Halvorson Oil & Repair .....	23	Pheasant Heaven Lodge .....	6
Big Prairie Hunts Lodge .....	13	Hieb's Cenex .....	19	Prairie Post Convenience Store .....	21
BJ's Food Center.....	18	Husman's Grocery Store .....	9	Presho Area Chamber .....	5
Buckshot Pheasants .....	20	Huston Ranches, Inc .....	23	Presho Library .....	4
Cedar Shore Resort.....	inside back	Hutch's Cafe & Lounge .....	17	Presho Pharmacy .....	6
Chamberlain Chamber.....	23	Hutch's Motel .....	17	Presho General Store .....	7
Coffee Cup Fuel .....	inside front	JB's Bird Cleaning .....	7	Reuman Ag .....	3
Comp's Pheasant Hunting .....	inside front	Jet Lanes Bowling Alley .....	9	Ringnecks .....	back cover
Country Curl Salon .....	8	Kennebec KOA Campground .....	18	Schoeny's Lodging .....	6
Dakotaland Birdseed .....	24	Kings Inn Motel .....	25	ScottE Enterprises .....	17
Dakota Hotspots Hunting .....	25	Leimbach Construction .....	16	Snake Den Lodge .....	11
Dakota Prairie Bank .....	3	Lower Brule Sioux Tribe Wildlife .....	26	Stanley Jones Medical Clinic .....	25
Dakota Land Real Estates .....	14	Lyman Co Museum .....	8	Sundall Law Office.....	17
Downtown Depot .....	11	Lyman Fitness Center .....	25	Thrift Store & More .....	20
Farmer's Union Oil .....	21	Mademoiselle Salon .....	11	Vivian Fire Department .....	24
Foley's Gun Shop .....	8	Marie's Taxidermy .....	26	Vivian Motors Repair.....	24
Garnos Ranch Hunts, LLC .....	9	Medicine Creek Golf Course .....	9	Willis Vet .....	22
Gerry's Motel .....	18	McNaughton Bird Cleaning .....	11		

## Lyman County works to serve the community

### Auditor's Office

Auditor: Pam Michalek  
PO Box 38  
605-869-2247

### Clerk of Courts

Clerk: Sara Floyd  
Sixth Circuit Court  
PO Box 237  
605-869-2277

### Community Health Nurse

Mary Jo Garnos, RN  
605-869-2217

### Director of Equalization

Director: Jim Sundall  
PO Box 126  
605-869-2206

### 4-H Advisor

Misty Welter  
605-869-2226

### Highway Office

Hwy Superintendent:  
Tim Long  
PO Box 66  
605-869-2261

### Register of Deeds Office

Register: Tracy Brakke  
PO Box 98  
605-869-2297

### Treasurer's Office

Treasurer: Carol Sundall  
PO Box 37  
605-869-2295

### Lyman County Sheriff Office

Sheriff: Steve Manger  
605-869-2267

### State's Attorney

Attorney: Anita Fouss  
605-869-2294  
or 605-669-3004

### Veterans Service Officer:

Gary Sletto  
605-869-2237

### Lyman County Ambulance

895-0911 or 869-0911

### Missouri Valley Crisis Center

Chamberlain  
605-730-0939  
605-234-5155

### Lyman County Commissioners:

Steve Perry      Leroy Choal  
Kim Halverson      Adam Ehlers  
Ryan Huffman

The Lyman County Courthouse in Kennebec is open from  
8:00 am to noon and 1:00 pm to 5:00 pm  
Monday thru Friday.

**In case of EMERGENCY**  
**dial 911**



# TWO LANDMARK HUNTING DESTINATIONS



CALL  
GUIDE &  
HUNT PKGS  
ONLINE

**The only FULL SERVICE  
hunting and fishing experience  
on the Missouri River**

- Restaurant
- Lounge
- Sporting Clays Course
- Marina
- Campground
- Conference Center

## **Cedar Shore Resort**

1500 Shoreline Drive  
Oacoma, SD  
605-734-6376  
[www.CedarShore.com](http://www.CedarShore.com)



**AL'S OASIS**  
A SOUTH DAKOTA TRADITION

PICK UP YOUR  
HUNTING  
GEAR



**Our restaurant is  
perfect for before  
and after the hunt**

Prime Rib | Buffalo Burgers  
Homemade Pies | Salad Bar

**Coffee is still  
only 5¢!**

C-Store • Supermarket  
Restaurant • Riverside Cabins

Check out our *hunting season menu*  
on [AlsOasis.com](http://AlsOasis.com) starting Oct. 14

## **Al's Oasis**

I-90 Exit 260  
[www.AlsOasis.com](http://www.AlsOasis.com)

**HUNTING LICENSES SOLD AT BOTH LOCATIONS**



# RINGNECKS



Fully equipped lodge with all the amenities to make your stay in the Presho area enjoyable and relaxing! Visit our website for more photos and information.

**(605) ROOSTER**  
**( 766-7837 )**



**Presho, SD**

[www.ringneckshuntinglodge.com](http://www.ringneckshuntinglodge.com)



**Pheasants, Geese, Prairie Dogs, Grouse, Snipe, Deer**  
**Lodging Available Year Round**