

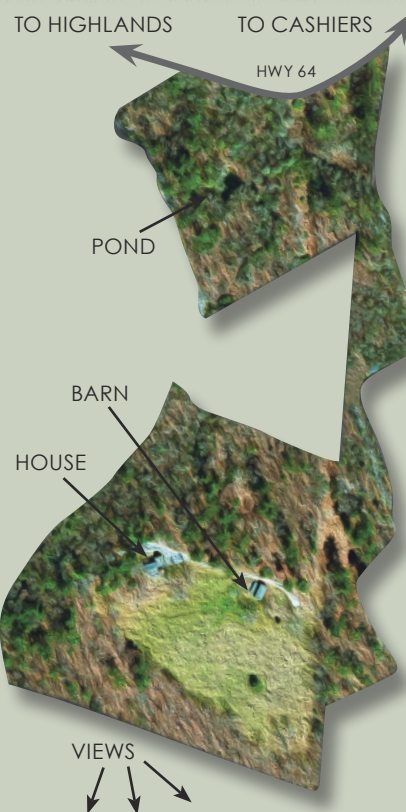


The Real Estate Magazine

SERVING CASHIERS, GLENVILLE, HIGHLANDS, LAKE TOXAWAY AND SAPPHIRE

HOMES | LOTS | ACREAGE | FARMS | COMMERCIAL | CONDOMINIUMS | RENTALS

Volume 26 Number 6 | November 2021 — March 2022



HICKORY RIDGE FARM is an equestrian estate just three minutes from Cashiers and 15 minutes from Highlands in the mountains of western North Carolina. This 26+ acre gated estate boasts breathtaking southern exposure and panoramic views of Whiteside Mountain, The Devil's Courthouse, and beyond. Two private entries lead to a farmhouse and a two-story barn with tack and feed rooms and huge open loft, which is great for parties. The land boasts mature dogwoods, fenced pasture, and a stocked, spring-fed pond. Multiple riding trails throughout with access to Forest Service land with additional trails and water features. The farmhouse features a traditional layout with four bedrooms, four baths, two covered decks, three fireplaces, a keeping room, and a dining room with a wall of windows overlooking the pasture and mountains. Recently, the home was renovated with an updated kitchen and all new bathrooms. Additional homesites on property and subdividable! Silver Slip amenities also available which include access to Lake Sarka, a trout-stocked, five acre community lake. This magnificent legacy property awaits your personal touch!

MLS# 96030 | CALL FOR PRICE



John Bynum:
(828) 200-0144



Faye Wurm:
(828) 200-1345



Dave Kirchner:
(828) 577-0620





YOUR FIRST HOME.



YOUR SECOND HOME.



YOUR DREAM HOME.

YOUR FOREVER AGENT.

828.526.1717 | [MeadowsMountainRealty.com](https://www.MeadowsMountainRealty.com)

488 Main St, Highlands | 2334 Cashiers Rd, Highlands
NEW CASHIERS ADDRESS: 196 Burns St, Cashiers

© 2021 BHHS Affiliates, LLC. An independently owned and operated franchisee of BHHS Affiliates, LLC. Berkshire Hathaway HomeServices and the Berkshire Hathaway HomeServices symbol are registered service marks of HomeServices of America, Inc. ® Equal Housing Opportunity.



BERKSHIRE HATHAWAY
HomeServices
Meadows Mountain Realty



In Due Diligence

CASHIERS

\$995,000 | MLS# 97336

This amazing 3BR/2BA cottage has been completely renovated and is located just minutes from High Hampton and the Crossroads. Spacious great room, "show stopper" kitchen, fantastic covered deck.

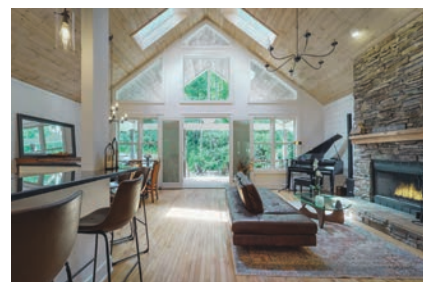


Reduced!

SAPPHIRE VALLEY

\$945,000 | MLS# 97052

Lakefront home on Hogback Lake. 4BR/4.5BA, stone fireplace in living room, vaulted ceilings, screened porch, open deck. Lower level has kitchenette, office space. Treehouse & fire pit in yard.



SAPPHIRE VALLEY

\$950,000 | MLS# 97281

3BR/3BA home in Stonecreek Crossing. Beautifully remodeled, open concept living. Shiplap walls, barn doors, wood-burning fireplace. SVMA amenities. Large deck and fire pit in back.



Reduced!

NORTON

\$699,500 | MLS# 97057

Bearfoot Retreat is 5BR/3BA and offered furnished. Currently used as a vacation rental; sleeps 10. Gas fireplace in living area, wraparound deck, & borders Norton Creek. Convenient to Lake Glenville & Cashiers



SAPPHIRE VALLEY

\$395,000 | MLS# 96710

3BR/2BA. Master in loft with large sitting area, jetted tub in bath. Two guest rooms and one bath on the main level, along with living room, dining area, kitchen and screened porch. SVMA amenities.



TUCKASEGEE

\$369,000 | MLS# 95657

Custom built 2BR/2BA home on 2.89 acres with a shed, fire pit, and a large fenced-in area. En suite master bedroom, living room, and kitchen are all on the main floor. Second ensuite on lower level.



CASHIERS

\$278,500 | MLS# 96134

Two great lots at beautiful Laurel Lake in Cashiers. Park model is currently non-conforming; a main house and guest house may be constructed and the park model must be pulled off.



SAPPHIRE VALLEY

\$275,000 | MLS# 97652

Updated 3BR first floor Hilltop end unit. Stone fireplace and hardwood floors in main living areas. Main suite has updated bathroom with tile shower and access to the rear balcony. SVMA amenities.



YOUR PROPERTY'S LISTING COULD BE HERE!

Don't get left behind in today's market! Find out what Berkshire Hathaway HomeServices Meadows Mountain Realty can do for you. Call us at 828.526.1717 today!



BERKSHIRE HATHAWAY
HomeServices
Meadows Mountain Realty

MOVING MOUNTAINS

TRUST • INTEGRITY • STABILITY • LONGEVITY



© 2021 BHHS Affiliates, LLC. An independently owned and operated franchisee of BHHS Affiliates, LLC. Berkshire Hathaway HomeServices and the Berkshire Hathaway HomeServices symbol are registered service marks of HomeServices of America, Inc. ® Equal Housing Opportunity.



We've Moved!
 Stop by our new
 Cashiers office at
196 Burns St.
 at the corner of
 Frank Allen Road and
 Burns Street.

LOT LISTINGS

GLENVILLE | MLS# 96461 | \$699,000
 21.9 acre lot w/Lake Glenville view at top
 CASHIERS | MLS# 97154 | \$595,000
 7.55 acre gentle lot in Spring Forest
 SAPPHIRE | MLS# 95484 | \$245,000
 10.28 high elev. acres in gated Sapphire
 Ridge
 CASHIERS | MLS# 96044 | \$215,000
 2.08 acre lot w/good bldg site & great view
 LONESOME VALLEY | MLS# 93256 | \$199,000
 .84 acres with rock face mountain view
 LONESOME VALLEY | MLS# 93254 | \$193,000
 .67 acre near community lake and boat-
 house
 TUCKASEEGEE | MLS# 96465 | \$169,000
 2.34 acres in gated Waterdance
 TUCKASEEGEE | MLS# 96447 | \$166,500
 3.21 acres in gated Waterdance
 SAPPHIRE | MLS# 96429 | \$165,000
 3.85 acres in Sapphire Ridge
 SAPPHIRE | MLS# 96428 | \$155,000
 2.0 acres in gated Sapphire Ridge

GLENVILLE | MLS# 95039 | \$139,000
 .41 acre lot with Lake Glenville views
 CULLOWHEE | MLS# 96446 | \$134,900
 2.4 acre lot in gated Greycliff with deed-
 ed lake access
 GLENVILLE | MLS# 97338 | \$87,900
 2.57 acre lot in Chinquapin w/amenities
 SAPPHIRE | MLS# 94071 | \$87,000
 2.32 acre lot in gated Whitewater Ridge
 TUCKASEEGEE | MLS# 94895 | \$75,000
 4.202 acres in gated Waterdance with
 views
 GLENVILLE | MLS# 97555 | \$69,000
 .75 acre lot in gated Greycliff with views
 SAPPHIRE | MLS# 96566 | \$35,000
 1.10 acre lot just off the 15th green in
 Burlingame
 SAPPHIRE | MLS# 95802 | \$25,000
 .65 acre lot in Holly Forest. SVMA ameni-
 ties
 GLENVILLE | MLS# 96531 | \$14,000
 4.87 acre lot in gated Pilot Mountain

ELEVATE | OUR NEW ONLINE MAGAZINE | FALL 2021 EDITION



The just released Fall edition of ELEVATE has articles on the Cashiers-Highlands Humane Society, Vivace, Spruce Interiors, and more! Created to be a "field guide of the Plateau," ELEVATE features a calendar of events plus articles on local businesses in our area.

Find out WHO and WHAT makes the Plateau so special by scanning the QR code or go online here:
<https://online.flippingbook.com/view/532710529/>. **No sign up or subscription required!**



828.526.1717 | MeadowsMountainRealty.com

488 Main St, Highlands | 2334 Cashiers Rd, Highlands
 NEW CASHIERS ADDRESS: 196 Burns St, Cashiers

© 2021 BHHS Affiliates, LLC. An independently owned and operated franchisee of BHHS Affiliates, LLC.
 Berkshire Hathaway HomeServices and the Berkshire Hathaway HomeServices symbol are
 registered service marks of HomeServices of America, Inc. ® Equal Housing Opportunity.



BERKSHIRE HATHAWAY
 HomeServices
 Meadows Mountain Realty



SARATAY FALLS



THE ASTER | ONE Level



THE LAUREL | TWO Levels



LOUDERMILK
CUSTOM HOMES

CUSTOM LUXURY HOMES STARTING AT \$1.4M

MODERN-RUSTIC DESIGN
NATURAL 40' WATERFALL & HIKING TRAILS
ONLY 20 1+ ACRE PRIVATE LOTS AVAILABLE

Named after its beautiful 40-foot waterfall, Saratay Falls is a new community of 20 luxury mountain homes to be built just minutes from Cashiers, NC, by developer Loudermilk Homes, a large, custom home builder out of Atlanta, GA, known for a relentless focus on quality craftsmanship, transparency, and advanced smart home technology.

Brooks Kittrell at (828) 230-4453 | John Muir at (404) 245-7027
www.SaratayFalls.com

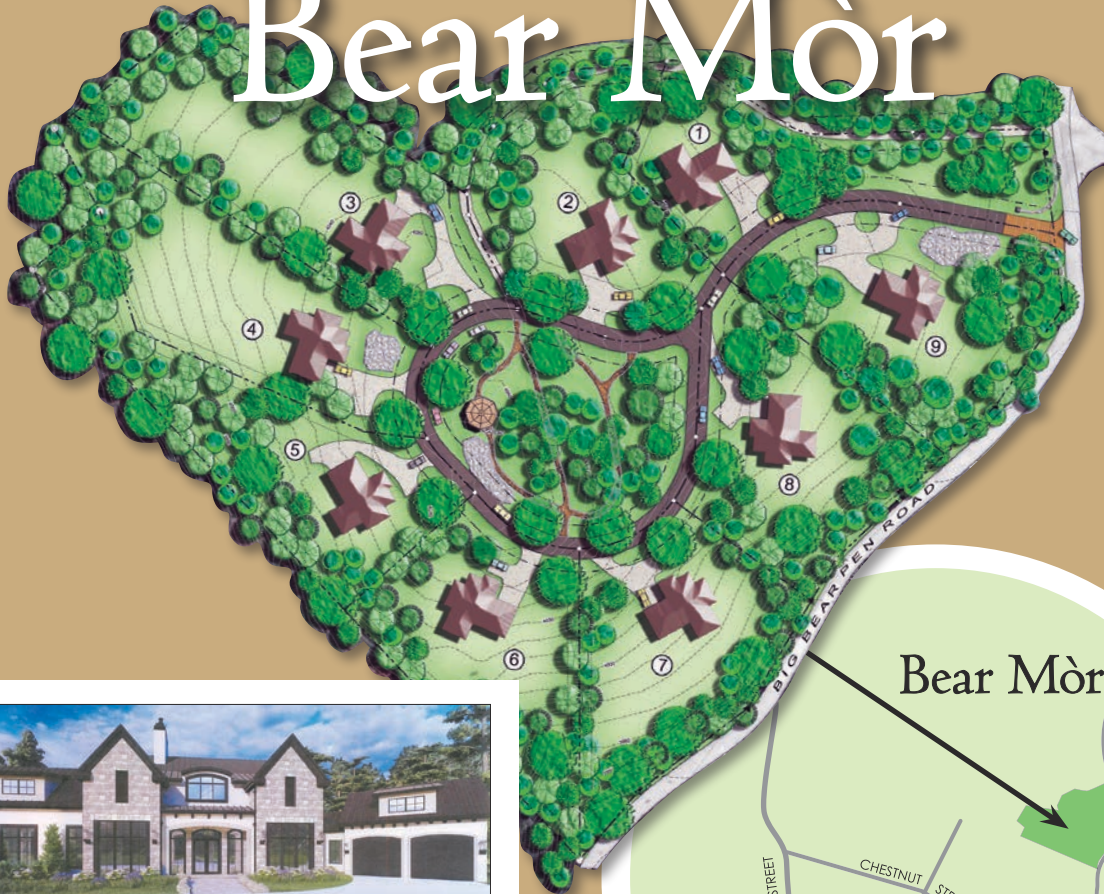


LUXURY
COLLECTION

BERKSHIRE HATHAWAY
HomeServices
Meadows Mountain Realty

©2021 BHHS Affiliates, LLC. An independently owned and operated franchisee of BHHS Affiliates, LLC. Berkshire Hathaway HomeServices and the Berkshire Hathaway HomeServices symbol are registered service marks of HomeServices of America, Inc. ® Equal Housing Opportunity.

Bear Mòr



MLS# 97313 | LOT 9 | TWO Levels



CUSTOM LUXURY HOMES STARTING AT \$2M

GATED COMMUNITY NEAR DOWNTOWN HIGHLANDS
WALK TO RESTAURANTS, ENTERTAINMENT, & SHOPPING
ONLY NINE .75+ ACRE LOTS AVAILABLE

Bear Mòr is a new community of luxury mountain homes to be built in the heart of Highlands, NC, by developer Loudermilk Homes, a large, custom home builder out of Atlanta, GA, known for a relentless focus on quality craftsmanship, transparency, and advanced smart home technology.

Mitzi Ravers (404) 218-9123 | Judy Michaud (828) 371-0730
www.MeadowsMountainRealty.com

©2021 BHHS Affiliates, LLC. An independently owned and operated franchisee of BHHS Affiliates, LLC. Berkshire Hathaway HomeServices and the Berkshire Hathaway HomeServices symbol are registered service marks of HomeServices of America, Inc. ® Equal Housing Opportunity.



LOUDERMILK
CUSTOM HOMES



LUXURY
COLLECTION

BERKSHIRE HATHAWAY
HomeServices

Meadows Mountain Realty

INDEX

of advertisers

Allan Dearth and Sons Generators	38
Berkshire Hathaway HomeServices Meadows Mountain Realty	2-7
Betsy Paul Properties	14-15
Black Rock Granite and Cabinetry	64
Cashiers Insurance Agency	29
Country Club Properties	19-20
Designers Market	12
Fisher Realty	16-17
Glen Cove by Old Edwards Inn	65
Highlands Map	23
Highlands Sotheby's International Realty	18-19
Keller Williams Carolina Cone Team	37
Landmark Real Estate and Vacation Rentals	9-11
McKee Properties.....	13,21,40-63,68
Mountainworks Custom Home Design	36
Reeves Ace Hardware	38
RE/MAX.....	22
Sapphire Valley Real Estate	24-28
Silver Creek Real Estate Group	66-67
The Summer House by Reeves	39
Weichert Realtors Highlands Properties	30-33
Westmark Construction	34-35

photo credit

NOVEMBER-MARCH COVER PHOTO by Stephen Ozcomert

Stephen Ozcomert is on Instagram: @stephen_ozcomert



TBA LAKE VISTA DRIVE

GLENVILLE • MLS 96087 • \$599,000 • ACRES 11.97

This lot has dramatic long-range views of Lake Glenville and the surrounding mountains. Own the top of a mountain with a cleared building site. Build your dream home and have unsurpassed views in all directions. This lot also provides privacy in a peaceful setting.



2678 N HIGHWAY 107

CASHIERS • MLS 94705 • \$549,000 • ACRES 10.81

Prime, unrestricted commercial location with approximately 248 feet on the three-lane portion of Highway 107 North with a gradual terrain. Potential uses are multi-family, motorhome park, industrial, commercial, storage or office park. A great opportunity for the experienced developer or investor. All utilities at site including drilled well but no pump. The property is strategically located 2.5 miles North of Cashiers on the East side of Highway 107 N., the major North/ South artery with the highest traffic count in this area. The three lanes in front of the property provide high visibility and great accessibility. There are two older abandoned homes on the property that are not habitable.



LANDMARK
REAL ESTATE SALES & VACATION RENTALS
A RE/MAX COMPANY

DEBBY HATTLER
BROKER

CELL: 828-506-0173

OFFICE: 828-743-0510

EMAIL: DEBBY@LANDMARKRG.COM

49 FRANK ALLEN ROAD | PO BOX 2829 | CASHIERS, NC 28717







Navigating the real estate market
around here requires the knowledge
and experience of a leader.

Let Landmark be your guide.



LANDMARK
REAL ESTATE SALES & VACATION RENTALS
A ROYAL SHELLE COMPANY

Because real estate decisions last a lifetime

CASHIERS • HIGHLANDS • SAPPHIRE

828-743-0510 • WWW.LANDMARKRG.COM



THE DESIGNER'S MARKET, INC
"Design Matters"



WINDOWS | WALLS | FLOORS | CABINETS



HunterDouglas

61 Hawksview Road • Cashiers, NC 28717 • (828) 743-1400
Monday-Friday 10-5 • Saturday 11-3 • www.thedesignersmarket-nc.com

BETH TOWNSEND



WHAT MY CLIENTS ARE SAYING...

*"We've worked with Beth on a number of transactions over the past several years as buyers and sellers. She is smart, honest, hardworking and a lot of fun. **She is well prepared and strategic, and we have always been well served by trusting her instincts and advice.** Plus, she just makes the whole process enjoyable from beginning to end. I can't imagine there's a better broker in Western North Carolina."* – DAVE & JEN D.

*"Beth is a pleasure to work with and knows how to get the job done. She has helped us to sell two houses over the years, and neither sale was without some stress due to a variety of factors, none of which were caused by Beth. **She is adept at working through challenges and finding a way to make things happen.** You can be confident that she will get the very best possible result when she represents you."* – VICKIE & RUFUS D.

*"We have worked with many real estate agents and can't say enough about Beth Townsend. She represented us buying homes in downtown Highlands as well as High Hampton, and we would highly recommend her to anyone. Not only was she adept at presenting us with homes that met our very specific criteria, but **she was also a stellar negotiator and ensured that we got the best possible deal.**"* – BILL & MISTY B.



AT A GLANCE...

- › Real estate professional 28+ years, with a Cashiers connection since 1970
- › Representing Sellers and Buyers of estate properties and land tracts; and matching Buyers to Club and Neighborhood preference
- › Experienced in area-wide construction projects, including being a member of the Wade Hampton Golf Club Development Team
- › Consistently ranked as a Top Performer on the Plateau
- › Bachelor's of Landscape Architecture, University of Florida

FOR
SALE

MAGNIFICENT PRIVATE ESTATE
\$6,950,000 | MLS 95503



BETH TOWNSEND, GUILD™ | CO-OWNER / BROKER

828.421.6193 | BETH@CASHIERS.COM | MCKEEPROPERTIES.COM



McKee
PROPERTIES



Betsy Paul
PROPERTIES

HOMES • LOTS • ACREAGE • COMMERCIAL

870 HWY 64 W • CASHIERS, NC 28717 • 828.743.0880

VIEW OUR WEBSITE: BETSYPAULPROPERTIES.COM



LAUREL FALLS

Sub-dividable +/-58.08 acres of beautiful Mtn. land. Gated access. Near Panthertown Valley in the Glenville area, minutes to Cashiers approx. 4000' elev. Several nice building sites, some w/ stream frontage, established roads, & several wells. Fabulous views enlarged w/ tree trimming, high building sites for panoramic views. Secluded estate property has mature hardwoods, H orses allowed.

MLS# 96508 🏠 \$ 799,000



SLAB TOWN FRONTAGE

JUST REDUCED Wonderful large tract of land, 4.70 +/- acres, in the heart of Cashiers. This property has Chattooga River headwaters flowing through, off to one side, mountain views. The property can be subdivided. There are nice level building sites. Easy access to lodging, shops, restaurants, and businesses. You do not miss out on this EXCELLENT and RARE Cashiers opportunity!

MLS# 95749 🏠 \$ 299,000 REDUCED - UNDER CONTRACT



THE FOREST

Charming 2BR cottage with Mountain views, Hickory floors, native stone fireplace, hickory cabinets, granite tops, stainless appliances, v-groove pine walls, skylights and 2 tile baths. Deck with mountain view, pergola over the hot tub. Garden shed. Conveniently located 3 miles to Cashiers in a quaint neighborhood, furnished.

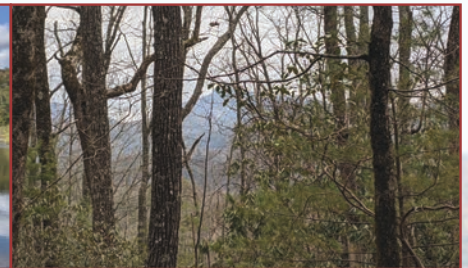
MLS# 🏠 \$ 395,000



HOLLY BERRY ESTATES

11.54 +/- acre lot. Whiteside cove location is conveniently only 6 miles from Cashiers yet private & secluded. 180 degree views of Little Terrapin, Chimney Top and Rock Mountains. Holly Berry Estates has new paved roads, two stocked lakes for fly fishing, swimming and kayaking. Lot can be subdividable and has existing well. Close to Sliding Rock (natural NC waterslide) and US National Forest known for its hiking trails.

MLS# 95656 🏠 \$ 235,000



BLACK ROCK FOREST

18 sided, well maintained 3BR/2BA home. Level entry to main & basement levels w/ split driveway. Extremely private location at over 4,000' elev. for a cool & natural setting that can be enjoyed from the wrap around deck. Includes 2 additional, adjoining parcels for a total of 5.25+/- acres. With light restrictions. Open floor plan with large kitchen. Low maintenance yard with gardens.

MLS# 97169 🏠 \$ 475,000



SHEEPCLIFF WOODS LOT

Quiet & private Sheepcliff lot with paved roads & gated access, near Cashiers Cross-roads. Enjoy events at the Village Green, coffee shops, boutiques & many restaurants. Beautiful gently rolling land with mature rhododendron & mountain laurel, installed 3BR septic on site & access to community water. 2.36 +/- acres for kids, gardening & plenty of parking in addition to the build site.

MLS# 96759 🏠 \$ 200,000



HIGHWAY 64 WEST

Highlands Cashiers Road development opportunity. Whiteside Mountain view potential with trimming. 100 gal/min well on 4.22 (+/-) acre piece only limited by commercial review. Great site for a bed and breakfast, spectacular professional office or dramatic destination shop.

MLS# 95870 🏠 \$ 169,000



Betsy Paul
PROPERTIES

BETSYPAULPROPERTIES.COM

828.743.0880



WHITEWATER RIDGE

Solitude & high elevation. Some with superb views of Whiteside Mtn. or SC lakes. Paved roads & picnic area at Sandy Gap Pond. Gated 285+/- acre community enhanced by waterfalls in the White-water River in Nantahala National Forest bordering 3 sides. Water system, & underground utilities. Great buildable lots! Newly built Pavillion with Natl Forest access for fly fishing, hiking & Waterfalls.

Lot 9R ⚡ \$ 195,000 MLS# 97377

Lot 16 ⚡ \$ 95,000 MLS# 97619

Lot 18 ⚡ \$ 95,000 MLS# 97622

Lot 33 ⚡ \$ 95,000 MLS# 97548

Lot 14 ⚡ \$ 85,000 MLS# 97501

Lot 22 ⚡ \$ 75,000 MLS# 97629

Lot 31 ⚡ \$ 75,000 MLS# 97643



HOBNOB LANE

Convenient less than 10 minute drive to Cashiers Crossroads or Lake Glenville Installed septic on lot and owner association water. There is a 1000 square foot minimum build. Great lot to build your small house on. 38 +/- Acres.

MLS# 97142 ⚡ \$ 75,000



PILOTS KNOB

Great opportunity for a high elevation lot with privacy. Gentle rolling topography. Potential Great Mountain view with tree trimming. Winter mountain view now. Subdivision has greenspace, community pond and fire pit. Close to Lake Glenville access and to Cashiers.

MLS# 95734 ⚡ \$ 69,900



HOBNOB LANE

Convenient less then 10 minute drive to the Cashiers crossroads and Lake Glenville. Installed septic. owner association water. 1000 square foot minimum build. Great lot to build a small house. Historic spring located on property.

MLS# 97141 ⚡ \$69,900



SILVER SLIP FALLS

Lot 2, +/- 1.5 acres at 3510' elevation, in desirable Silver Slip Subdivision. Gated and close to town of Cashiers. It is located at the end of a cul-de-sac. Enjoy Lake Sarka, the 5 acre community lake stocked with trout--ideal for the avid fisherman. Great for Year Round or Summer living. Ridge Views. Three bedroom expired septic permit.

MLS# 91917 ⚡ \$ 45,000



SAPPHIRE HIGH

Large cool lot, 2.04 +/- acres, has south east long range mountain views toward Clemson SC, with tree trimming. Fairly gentle house site. Quiet with paved roads, great for vacation-year-round home. Amenities

MLS# 93697 ⚡ \$ 45,000



APPLE DUMPLIN HILL

This unique well priced Mountain View lot in a quiet cabin neighborhood boasts a babbling brook small stream frontage with a partial view. Great location for a Cabin in a quiet cabin community! Close access to Cashiers, Lake Glenville and Franklin.

MLS# 95941 ⚡ \$ 15,000



SAPPHIRE VALLEY

Easy build, high elevation lot in Eagle Ridge. Lot is located in a quiet and secluded setting. Ready for your new home! Ownership of the lot includes full amenities for Sapphire Valley. Lot includes sewer and water hookup to private system.

MLS# 96912 ⚡ \$ 14,000

Closed Contract

FISHER
REALTY

Established 1977

*Serving Western North Carolina
Since 1977*

FISHER REALTY
40
years
ESTABLISHED 1977

For Proven Professional Service, Call the Fisher Realty Team



LAKE TOXAWAY ESTATES LAKEFRONT COTTAGE

3 BR, 2 BA home on 1.76± acre lot. Private boat ramp, pond and stream.
\$2,250,000. MLS 96364



TOXAWAY MOUNTAIN AT LAKE TOXAWAY ESTATES

3 BR, 2½ BA custom home with an outstanding view.
\$1,750,000. MLS 96769



NEAR CLUBHOUSE, GREYSTONE INN AND MARINA AT LAKE TOXAWAY ESTATES

4 BR, 4 BA home with outstanding mountain view and waterfall
\$795,000. MLS 97001



AN ABSOLUTELY FANTASTIC HOME AND SETTING -

3 BR, 3½ BA log home and guest house on 16+ acres with private pond, gazebo, and trails.
\$1,399,000. MLS CAR3713252



Art Fisher
Broker-In-Charge
(828) 506-4895



Amanda
Jennings Gravley
(828) 200-2944



Lots and Land

Burlingame

LOT 2 TURKEY ROOST ROAD - 2.41 acres. Wild scenic river front. \$189,000 MLS 95777

LOT 5 RUNNING FOX ROAD - Exceptional mountain view lot. \$125,000. MLS 96117

LOT 18 OLD STILL ROAD - A.96± acre lot with a great mountain view. \$85,000. MLS 95421

LOT 13 CLUB DRIVE - .78± acre fairly level lot conveniently located in the community. \$50,000. MLS 89758

LOT 36 LAKESHORE DRIVE - .83± acre lot with additional access on Upper Whitewater Road. \$29,500. MLS 87999

LOT 44 WINDING CREEK ROAD - Priced to sell. \$19,500. MLS 95395

72 BIG PINE ROAD - .62± acre lot on a cul de sac. \$3,000. MLS 87364

74 BIG PINE ROAD - Fairly flat .6± acre lot. \$3,000. MLS 87358

Lake Toxaway Estates

PANTHER RIDGE - 2.74± acre homesite with sweeping views over 2 lakes and the surrounding mountains. \$285,000. MLS 89837

ADJOINS THE 15TH TEE - One of Lake Toxaway Estates' finest golf course homesites. \$125,000. MLS 89759

BREATHTAKING VIEW - Of the lake and Toxaway Mountain from this 3.38± acre homesite. \$199,000. MLS 95854

~ **NEW LISTING** ~ **TOXAWAY MOUNTAIN** - 1.86+/- acres with magnificent views of Lake Toxaway and the Blue Ridge Parkway. \$199,000. MLS CAR3794504

CARDINAL DRIVE - Lots 2 & 3 adjoining Toxaway River Trail and Toxaway River. \$160,000 each. MLS 89832 & 89834

REMARKABLE MOUNTAIN VIEWS - From this gently sloping, partially cleared homesite. \$65,000. MLS CAR3549561

LAKESIDE MOUNTAIN - Blue Ridge Mountain views from this site at the end of a cul-de-sac. \$60,000. MLS 92450

Highlands

HIGHLANDS COUNTRY CLUB - Lakefront 1.87± acre site adjoining Club Lake and the Bobby Jones tee box \$2,250,000. MLS 96580

Other Vacant Land

LOT 128 WHISPER LAKE - .73± acre lot. \$14,900. MLS 87484

CHOICE ACREAGE - 27± acres of beautiful gently sloping land with pasture, woodlands, and streams. Road into property. Toxaway area. \$389,000. MLS CAR3294380

EXCEPTIONAL LOT - In Lake Toxaway area with mountain views. Driveway and partial building site cleared plus 3 BR septic in place and power on the property. \$45,000. MLS CAR3655872

34.78± ACRES - Unrestricted property in Rosman offering privacy, streams, and small waterfall. Owner may consider subdividing. Call for details. \$285,000. MLS CAR3724552

Highlands | Sotheby's

INTERNATIONAL REALTY



500 & 502 Sheer Rock Road
Laurel Knob at Glenridge
Glenville, NC

Price Upon Request
MLS# 97651

This fairy tale castle is not just in a storybook. It exists today in Glenville, North Carolina. Sited at a pinnacle on Laurel Knob where the views expand fifty miles in all directions, sits not only the castle with an infinity swimming pool and spa, but also a guest house barn with a nearby wine cellar dug into the hill, a cooking gazebo, multiple viewing overlooks, a camp house, a greenhouse, a chicken coop and a dog park.

The castle was modeled after fire towers, built by the National Park Service in the late 1800s, dotted along the high points of mountain ranges to give advance warning of forest fires.

This is a once in a lifetime opportunity to own your own castle on twenty plus acres with another residence in a barn with numerous out buildings and trails through this private estate.



Jody Lovell

Broker | Owner
(828) 226.6303
jody.lovell@sir.com

Highlands

Sotheby's

INTERNATIONAL REALTY

Highlands Road

HIGHLANDS, NC | MLS # 95579

4.5 acres with 500 feet Cullasaja River frontage.

\$665,000

Garnet Hill Road

CASHIERS, NC | MLS # 95751

19.38 acres with breathtaking views of Whiteside Mountain.

\$1,665,000



Jody Lovell
(828) 226.6303
jody.lovell@sir.com



OFFERED FOR \$975,000

MLS # 97624



EMBRACE THE ESSENCE OF *North Carolina Lifestyle!*

This 4 BR/3-1/2 BA Home with Bonus Room exudes mountain charm. The impressive Great Room has a wonderful Open Floor Plan. It adjoins a generous Covered Deck replete with outdoors stone fireplace. The Master on the Main has it's own fireplace and opens to a lovely porch overlooking garden space with firepit. A second bedroom is on the Main Floor. The Loft/ Bonus Room has 2 Queen sized Beds. This could be used as Office or Rec Room. Lower Level has 2 Bedrooms with individual porches. A great place for gatherings & and privacy.

KAY MCKEY, BROKER | c 404-354-0466

KAYRMCKEY@GMAIL.COM | CCPHIGHLANDSNC.COM

CP COUNTRY CLUB
PROPERTIES

83049A

**FINDING
YOUR DREAM
HOME
IS OUR PASSION**

Wright Square Sales Office
(828) 526-2520

Main Street Sales Office
(828) 526-5010

Mountain Fresh Rental & Sales Office
(828) 787-2002

www.ccphighlandsnc.com | www.highlandsinfo.com
ccp4info@frontier.com



MLS #96652 \$1,495,000

Highlands Country Club

5 Bedroom 5 bath home located at Highlands Country Club. Usable lot with lovely landscaping. 45 KW Generator. Sophisticated irrigation system which allows full property irrigation and a 19 station window and deck flower box irrigation drip system. Do not miss seeing this one!



MLS #96947 \$987,900

Lake Front Setting

Spacious 4 bedroom 3 and 1/2 bath. Enter on the main level and enjoy a cozy couples room with fireplace. Next you flow into a great room, kitchen with huge island that opens into a dining living room, which opens onto an inviting screened porch, overlooking the lake. Large master bedroom suite and 2 additional bedrooms and baths on the main level in the split floor plan. Terrace level has a nice family room with a spacious bedroom and bath. plus storage.



MLS #95669 \$1,895,000

Located In HFCC

This Craftsman style has loads of stone and glass to bring the outside in. Screen porch with fireplace and open deck. Great room has Heart pine floors and 2 stone fireplaces. Custom kitchen with island workspace, Bar, powder room and master suite with gas fireplace. Upper level kids playroom, 2 bedrooms and bath. Lower level has Laundry, Family room with pool table, sitting room with fireplace. 2 bedrooms each with baths. A two car garage and a view of Whiteside mountain.

“Wayne Monday was so kind to help my family with the sale of our home. We loved Wayne’s ‘get up and go’ attitude! He had creative ideas and brought value to the table with different avenues on marketing, open houses, and showing the property. He was always very quick to respond and stayed in touch with us quite well throughout the entire process. I am certain that we secured a higher sales price as a result of Wayne. I would highly recommend him!” — ISABEL B.



Photographed at
Cashiers Lake



FOR
SALE

CASHIERS: 47+ ACRES
\$950,000 | MLS 93633

WAYNE MONDAY



COMMITTED TO CASHIERS



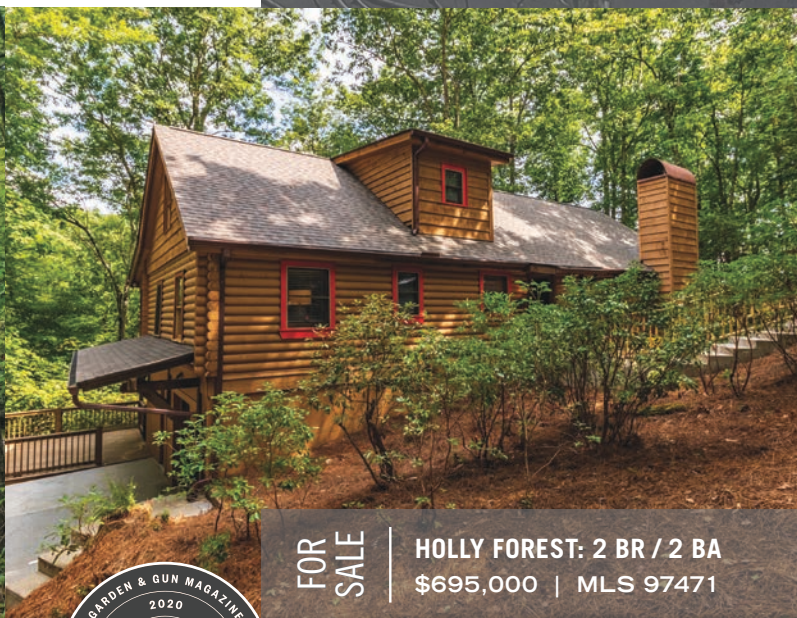
FOR
SALE

BIG SHEEPCLIFF: 3+ ACRES
\$160,000 | MLS 92997



JUST
SOLD

279 UPPER RIDGE ROAD
\$1,798,000 | SELLER



FOR
SALE

HOLLY FOREST: 2 BR / 2 BA
\$695,000 | MLS 97471

WAYNE MONDAY, CLHMS™ | BROKER | c 828.508.8661

WAYNE@CASHIERS.COM | MCKEEPROPERTIES.COM



McKee
PROPERTIES



www.yourcashiershome.com

EACH OFFICE INDEPENDENTLY OWNED AND OPERATED

RE/MAX Summit Properties - Cashiers

828.743.6445

Macon County

Highlands

- 1 Hemlock Dr
2 Club Dr
3 Fairway Villas
4 Fairway Condos



Come enjoy the beautiful splendor of Sapphire Valley. Whether you are buying, listing, or vacationing, our experienced brokers can help you every step of the way.



Bill Kruckenberger
Broker-In-Charge/Owner



Colene West
Broker Associate



Mary Korotva
Broker Associate



Laura Schiele
Broker Associate



Rene Gibson
Broker Associate



Craig Gibson
Broker Associate



Jim Hair
Broker Associate



Jeremy Robinson
Broker Associate



Beth Hamilton
Broker Associate



Sapphire Valley Real Estate & Rentals
3065 HWY 64 East, Suite A, Sapphire Valley 28774
Office: 828-743-0466 SapphireValleyRealEstate.com
SapphireValleyRentals.com

Sapphire Valley Real Estate

Featured Listings



Lot 45 Continental Drive, The Divide, Sapphire Valley

Possibly the best view on the Plateau, this custom designed mountain home will overlook Panthertown Valley & the mountains beyond!!

MLS # 93077 \$1,950,000 PreConstruction



Lot 37 Hidden Grouse Lane, The Divide, Sapphire Valley

Incredible Custom Mountain Modern Design with Soaring View-Lines
Big Views of Whiteside, Chimneytop perched high on mountainside.

MLS # 97402 \$1,750,000 UNDER CONSTRUCTION



442 Sapphire Ridge Rd, Sapphire Ridge, Sapphire Valley

Long Range Mountain View with Nice Creek in Gated Community
4 Bedrooms, 3.5 Bathrooms with 2 Car Garage and lots of decks!

MLS # 97072 \$1,399,000 UNDER CONSTRUCTION



1490 Tray's Island Road, Fernwood, Sapphire Valley

3 Bedrooms, 3.5 Bathrooms with 2 Car Garage & 2 Big Fireplaces!
Easy level driveway with easy level access & rock cliff view.

MLS # 95414 \$999,000 UNDER CONSTRUCTION



Falcon Ridge, Lot B Tower Road, Sapphire Valley

Incredible sub-dividable mountaintop estate parcel with 9 acres
and MASSIVE SOUTHWESTERLY MOUNTAIN VIEWS at over 4500'

MLS # 95162 \$349,000



Lot 2-C Lofty Lane, Sapphire Valley

Behind the gate of Bald Rock but without the fees! Incredible
southerly views and easy building site with underground utilities.

MLS # 96515 \$149,000



Sapphire Valley Real Estate
3065 HWY 64 East, Suite A
Sapphire Valley 28774
Office: 828-743-0466
SapphireValleyRealEstate.com



Bill Kruckenberger
Owner, Broker-In-Charge
828-506-8398
BillKruck@gmail.com

Lots 27 & 28 Flatwood Branch, Glenville NC 28736



MLS #: L86936 &
L86937

Size: 3.86 & 5.54
\$175,000 per lot

These two beautiful, adjacent lots are situated on a cul-de-sac in the desirable enclave of High Hemlock at 4000 ft elevation. Underground utilities & paved roads offer an idyllic setting for your mountain home. There's a picnic pavilion, a trout-stocked pond (Wolf Lake), and Panthertown Valley is just minutes away.

252 Flatwood Branch, Glenville NC 28736



This family compound offers a spacious main residence, 2 guest cottages & add'l buildings. Set on a beautiful parcel of land just minutes away from the center of Cashiers, NC, this captivating estate is convenient, totally private and secluded. There are many extras that make this a safe and secure getaway for any family.

CashiersEstate.com

MLS 93441
Offered at \$3,250,000
7 Bedrooms
7 Bathrooms
1 Half Bath
5.61 Acres



Bill Kruckenberger
828.506.8398
BillKruck@gmail.com



Mary Korotva
828.506.9565
MKorotva@gmail.com



Sapphire Valley Real Estate



3 Bedrooms, 3 Full Bathrooms. A 20 + Acre Estate, Acreage and/or Home Available, Sub-dividable, create your own mountain dream home, live in the current home while you build, or create your own family compound. A Unique Must See!
MLS# 91000 \$1,250,000



New Creekside Village in the Divide at Bald Rock Incredible Custom Mountain Modern Designs - Unique Creekside Setting



The Divide, I-2 Speckled Feather Pass, Sapphire Valley
PreConstruction Package Ready to Start - 6 month Construction Time. New Streamfront Sanctuary in Surreal Mountain Valley on year round Hogback Creek, Big Deck, Stone Fireplace. **\$679,900**



The Divide, I-1 Speckled Feather Pass, Sapphire Valley
PreConstruction Package Ready to Start - 6 month Construction Time. New Streamfront Sanctuary in Surreal Mountain Valley on year round. Hogback Creek, Big Deck, Stone Fireplace. **\$697,500**



Sapphire Valley Real Estate
3065 HWY 64 East, Suite A
Sapphire Valley 28774
Office: 828-743-0466
SapphireValleyRealEstate.com



Bill Kruckenberger
Owner, Broker-In-Charge
828-506-8398
BillKruck@gmail.com

Sapphire Valley Real Estate

Featured Listings



Stonefly, Lot 13 Streamside Drive, Cashiers
River front, Lot 13, 1.51 acres,
257 feet of frontage to build your home.
MLS# 95953 \$395,000



Stonefly, Lot 17 Zeb Alley Road, Cashiers
Chattooga River front home site, Lot 17,
2.01 acres, private, gated, in town.
MLS # 95955 \$395,000



Stonefly, Lot 14 Streamside Drive, Cashiers
Stunning 1.5 acres on the Chattooga River
in lovely mountain community
MLS # 95954 \$395,000



Lot 92 Buckberry Dr. South, Sapphire Valley
Stream, almost an acre lot in beautiful Holly
Forest section 11, great easy home site,
ferns, rhododendron, laurels.
MLS # 96211 \$26,000



Whiteside Cove, Garnet Hill Lane, Cashiers
WHITESIDE COVE AREA: Garnett Hill Lane,
Unrestricted .95 acres lot with paved access, paved roads, water to lot, underground utilities
priced to sell.
MLS # 95618 \$49,000



Lot 19 Orchard Way, Sapphire Valley
Great View, amenities, 2.9 acres, gated,
water to lot, underground utilities
MLS # 97177 \$85,000



Lot 22 R Sapphire Ridge Road, Sapphire Valley
Big view, 1.7 acres, private yet close to town,
access to all Sapphire amenities, gaved and
paved roads.
MLS # 97178 \$85,000

153 Streamside Drive, Cashiers MLS: 93509 Offered at \$1,595,000

The "Black Bear" to be built home features 4 bedrooms and 5 bathrooms on 1.07 acres in town with stylish & contemporary design & rustic elements. It is mountain life style at its finest in beautiful Stonefly.



Sapphire Valley Real Estate
3065 HWY 64 East, Suite A
Sapphire Valley 28774
Office: 828-743-0466
SapphireValleyRealEstate.com



Colene West
Broker Associate
828-226-7654
ColeneWest@gmail.com



Fast, Friendly, Local!

Since 1916, Auto-Owners has been teaming up with local independent agents—people focused on you, the customer. That's the quality of your agent, and the company that stands behind them.

Service you
can count on.

C I A
Cashiers Insurance Agency

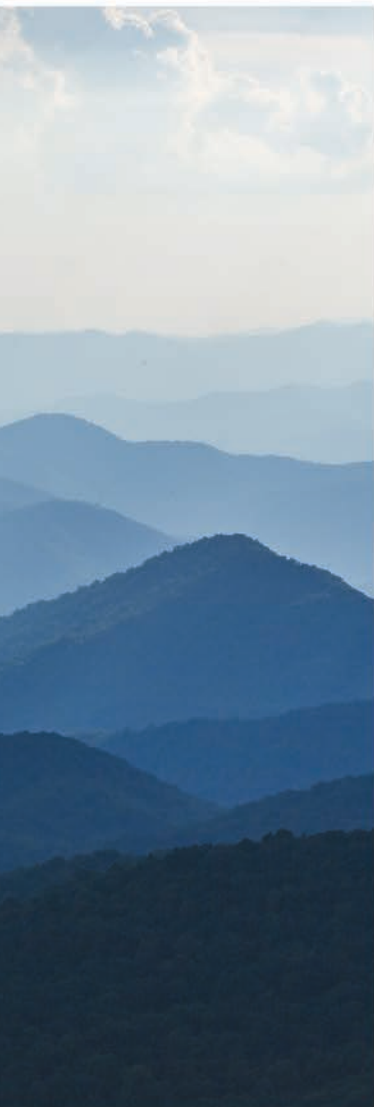
7 T S Lance Rd, Cashiers, NC 28717
(828) 743-2209 • www.ciaofwnc.com

Auto-Owners
INSURANCE

LIFE • HOME • CAR • BUSINESS

814426





Weichert,

REALTORS®

Highlands Properties

Independently Owned and Operated



Helping You Make The Right Move.

450 N. 4th Street | Highlands, NC 28741
(828) 526-5522
www.HighlandsProperties.com



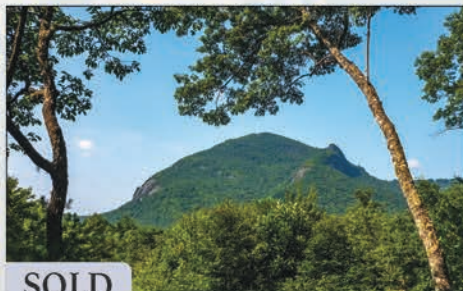
Cashiers • Wild Ginger Ln

\$3,179,000

5 BR | 5 BA | MLS# 97261

Kyle McKim 828.200.0454

Gorgeous move in ready house in the perfect end of cul-de-sac location, with beautifully landscaped grounds, water feature, patio and outdoor living areas. Located just minutes from Cashiers in the High Hampton community of Sheep Laurel.



SOLD

Cashiers • Silver Slip Falls

\$949,000

2 BR | 3 BA | MLS# 97260

Myrna Moore 828.371.2446

A remarkable home with big views of Whiteside Mountain and frontage on Silver Run Creek! Located in the gated community of Silver Slip Falls less than a mile from the Crossroads of Cashiers but although you are just minutes from the shops and restaurants of Cashiers.



Scaly Mountain • Shoal Creek Rd

\$1,700,000

8 BR | 9 BA | MLS# 97259

Kyle McKim 828.200.0454

Great estate house or Bed & Breakfast. This majestic home sits on 4 acres of rolling wooded grounds with picturesque Shoal creek meandering through the middle. This is a spectacular, well maintained property that could be used as a personal home, wedding venue, Bed & Breakfast or VRBO property.



Cashiers • Pinchot

\$850,000

8.26 Acres | Lot 13 | MLS# 97585

Kyle McKim 828.200.0454

Exclusive gated community. Flat, buildable home site overlooking quiet pasture area with spectacular long-range mountain views. Mountaintop membership available with approval.



Highlands • Ridges of Highlands

\$225,000

4.07 Acres | Lot 11 | MLS# 97586

Kyle McKim 828.200.0454

Great development with beautiful views, wonderful pavilion by the lake, gated community, large wooded lots with exceptional views close to Highlands.



Highlands • Ridges of Highlands

\$225,000

3.66 Acres | Lot 12 | MLS# 97588

Kyle McKim 828.200.0454

Great development with beautiful views, wonderful pavilion by the lake, gated community, large wooded lots with exceptional views close to Highlands.



Kyle McKim
Owner/Broker
828.200.0454



Myrna Moore
Broker
828.371.2446



Ken McKim
Office Manager/
Broker
828.421.1570



Shepard King
Broker
828.269.8764



Sukhin Chawla
Broker
762-500-3139



Melisa
Loudermilk
Broker
828.507.7900



Jeff Baillis
Broker
828.577.9080



Cashiers • Lance Road

\$495,000

5.06 Acres | MLS# 95194

Kyle McKim 828.200.0454

Located within walking distance from the Cashiers Crossroads, beautiful wooded and gently sloping land sits ready for development for your private estate or quaint subdivision.



Sapphire • Burlingame

\$205,000

2.41 Acres | MLS# 93258

Kyle McKim 828.200.0454

Beautiful lot with quiet stream and easily buildable.



Highlands • Clear Creek

\$350,000

25 Acres | MLS# 96376

Myrna Moore 828.371.2446

Great parcel with many beautiful rhododendrons on the lot as well as a stream down the middle. Property adjoins National Forest on left side. Great estate property or ideal for rental cabins.



Highlands • Trout Creek

\$139,000

2 Lots | MLS# 96074

Kyle McKim 828.200.0454

Two beautiful adjoining lots on both sides of Trout Creek with gravel driveway leading to concrete and metal bridge connecting the two lots. Great views of the creek and waterfalls.



Cashiers • Cedar Creek Cliffs

\$160,000

5.14 Acres | MLS# 97209

Shepard King 828.269.8764

Stunning panoramic layered mountain views from this top of the mountain lot situated at the end of Cedar Creek Cliffs. This lot has a gentle slope and cleared building site.



Cashiers • Cedar Creek

\$1,274,700

36.42 Acres | MLS# 93465

Kyle McKim 828.200.0454

Minutes from Cashiers, enter the land of "Ausra" meaning dawn with paved access, great topo, two meandering creeks/waterfalls, established roadbeds, and great mountain views.

Weichert,

REALTORS®

Highlands Properties

Independently Owned and Operated



828.526.5522 | www.highlandsproperties.com



Cashiers • Pinchot

\$595,0000

Lot 45 | MLS# 95300

Kyle McKim 828.200.0454

This buildable lot has great potential for a beautiful mountain home with breathtaking views. Pinchot features large lots, Less than two miles from the Crossroads at Cashiers.



Cashiers • Pinchot

\$950,000

Lot 3 | MLS# 96722

Kyle McKim 828.200.0454

Located in the exclusive gated pastoral mountain community of Pinchot this lot, with roughed-in driveway and flat building site, has gorgeous views overlooking Cashiers Valley.



SOLD

Glenville • Big Ridge

\$299,000

3.63 Acres | 1 BR | 1 BA | MLS# 91465

Kyle McKim 828.200.0454

Charming and cozy post-and-beam log cabin with wonderful long-range mountain views. A private retreat situated at 4000' and offered fully furnished.



Highlands • Hicks Road

\$75,000

1 Acre | MLS# 94893

Myrna Moore 828.371.2446

This lot is across from Half Mile Farm Rd, part of Mountain Moorings and if that access is desired there is an easement at the end of Mountain Moorings Rd. 3 BR septic already installed. Water provided through Mountain Moorings.



Highlands - Buck Creek

\$133,000

20 Acres | MLS# 97584

Kyle McKim 828.200.0454

Beautiful 20.5 wooded acres with wonderful stream, gently rolling, off buck creek, close to Highlands. Great estate property or gentleman's farm.



Michael's for Hair

\$75,000

Business & Fixtures Only | MLS# 97669

Myrna Moore 828.371.2446

Well established hair salon at the end Main St in Highlands. Easy access with plenty of parking. Lease renewed for 2 more years, transferable at the discretion of the landlord. Shown by appointment only.

Weichert

REALTORS®

Highlands Properties

Independently Owned and Operated



828.526.5522 | www.highlandsproperties.com




*"And into the forest I go,
to lose my mind and find my soul."*

~John Muir~



THE CIVILIZED WILDERNESS OF THE BLUE RIDGE MOUNTAINS

828.743.7077 | 20 Continental Drive | Sapphire, North Carolina 28774 | www.dividenc.com | 
Bill Kruckenberger | Sapphire Valley Real Estate | 828.506.8398 | www.sapphirevalleyrealestate.com
3065 Highway 64 E | Suite A | Sapphire, North Carolina





Meeting all your custom construction needs!

828.743.7077 | 20 Continental Drive | Sapphire, North Carolina 28774

Russ Henkel | General Contractor | 828.226.7226 | www.westmarkconstructionnc.com | GC #75453



Quality is not our goal...It is our *Standard*

Westmark Construction Company has extensive construction experience in the Cashiers and Sapphire areas. Westmark Construction's signature is quality craftsmanship and attention to the smallest of details.

Each project is viewed as if we were moving ourselves. We are not satisfied until you are. From the foundation to the top of the roofline, Westmark Construction provides the personal attention you need during the construction process to ensure the highest quality construction of your home.





Visit our Website - Desktop, Mobile, or Tablet

505924



Do you ever wonder what's for sale in a specific neighborhood?

Many Of Our Communities Don't Allow Real Estate Signs

ZeroPlus
by KELLERMortgage™ NMLS #140234

Zero Lender Fees
Zero Origination Fees
Plus \$1,000 Credit *
Toward 3rd Party Costs
Plus A Great Low Rate
***\$1,000 credit on loans**
\$150K+

Download our
AWESOME mobile
app and instantly
view properties
for sale near you.
Works anywhere
in the country!



"Certain officers, directors, and owners of Keller Williams Realty, Inc. have ownership interest in Keller Mortgage. Keller Mortgage, LLC is an affiliate of Keller Williams Realty, Inc. This is not a commitment to lend. Buyers are advised to obtain a Loan Estimate. Rates are subject to change and are dependent on credit and underwriting criteria. No Lender fee loan is limited to loans when a Keller Williams agent is a party to the transaction. Lender credit is limited to loan amounts \$150,000 and above when a Keller Williams agent is part of the transaction. Borrower is responsible for any rate buydown. VA Lender ID5601100000; FHA Direct-Endorsed Lender No. 241940009; Keller Mortgage is a licensed trade name of Keller Mortgage, LLC, 4725 Lakehurst Ct., Suite 400, Dublin, OH 43016. www.kellermortgage.com<http://www.kellermortgage.com/>; Equal Housing Lender"

kw GREAT
SMOKIES
KELLERWILLIAMS.

TO DOWNLOAD THE APP JUST TEXT "KW2SMYBGI" TO 87778 AND CLICK THE LINK

www.CarolinaConeTeam.com

828-507-1522



Ace is the place for all your fall yard clean up.

ACE
Hardware

Reeves
Ace Hardware

275 MAIN STREET
HIGHLANDS, NC 28741

Store Hours:

Mon – Sat 7:30 – 5:00
Sunday – CLOSED

828-526-2157
www.acehardware.com

82492A

Power your life

Make power outages a thing
of the past with a home
standby generator.



Are you prepared for power outages.

Power outages... we've all suffered through them. The good news is, you don't need to any longer. Generac home standby generators automatically provide backup power during a utility power outage – whether you're home or away. Whether it's for a few hours or several days, your family and home are protected. So sure, keep the candles and flash lights, but it's time to get serious about preparing for power outages.

Call or go online today for more information.

Allan Dearth and Sons

Sales (828) 526-9325
Service (828) 526-9325
Website adsemmergencypower.com

7441 Dillard Rd, Scaly Mountain, NC 28775

GENERAC

811559

THE SUMMER HOUSE

by **Reeves**

BED & BATH

Everything for the perfect sleeping experience.
Shop for all your Home Furnishing and Decorating needs.



Pine Cone Hill | Peacock Alley | Dash & Albert | DownTown | Le Blanc
Abyss & Habideco | Pigeon & Poodle | Kona | Thom Filicia | Thucassi



Monday-Saturday 9:00-5:00, Closed Sundays
2089 Dillard Road, Highlands | 2 miles from Main Street | 828-526-5577
www.summerhousehighlands.com

OUR TEAM OF BROKERS

BETH TOWNSEND

Co-Owner / Broker

LIZ HARRIS

Co-Owner / Broker

ANN MCKEE AUSTIN

Co-Owner / Broker



COLEEN GOTTLÖB

Broker-In-Charge

SANDY BARROW

Broker

JOHN BARROW

Broker / Rental
Coordinator

WAYNE MONDAY

Broker



PHILIP BRADLEY

Broker

MAGGIE ELMER

Broker

JOANNE BRYSON

Broker

GUS BRIGHT

Broker Associate



CLAY CANTLER

Broker / Licensed Asst.

LOGAN CROCKER

Broker / Licensed Asst.

JESSICA HOHEISEL

Broker / Licensed Asst.

KARALINE SHOMAKER

Broker / Administrator



McKee
PROPERTIES

619 HWY 107 S | CASHIERS, NC 28717 | 828.743.3411

LOCATED IN THE HISTORIC MINNIE COLE HOUSE

A Founding Partner



McKee Properties is proud to be a Founding Partner of G&G Land, a feature program of *Garden & Gun* magazine, highlighting properties that are dedicated to an “authentic sense of place and inherent responsibility to the natural world.”

MORE THAN 40 YEARS OF LUXURY REAL ESTATE
EXPERTISE IN THE CASHIERS-HIGHLANDS AREA

MCKEEPROPERTIES.COM



McKee
PROPERTIES

Yellow Mountain Preserve

OFFERED FOR \$8,450,000

205+ ACRES — This is the area's finest estate opportunity, minutes from Mountaintop Golf and Lake Club and Old Edwards Club, and centrally located between Cashiers and Highlands, North Carolina. Yellow Mountain Preserve boasts the highest elevation on the Cashiers-Highlands Plateau, at 5,100 feet, and is a true legacy property. The 205.04-acre estate has roads and utilities in place for a low-density development or can be enjoyed as a single-family or shared-family estate. Elevation reaches 5,127 feet, offering unique high-elevation vegetation and the finest, grandest views in the area. The estate adjoins 12,000 acres of the Nantahala National Forest, offering unlimited trails for hiking, mountain biking and horseback riding. A 26-acre gentleman's farm site sits at

4,600 feet and provides a peaceful 360-degree view of the surrounding mountains. At the summit, the Yellow Mountain fire tower rests near the boundary of the National Forest. The stunning panoramic views from there include Cashiers Valley, Whiteside Mountain, Lake Glenville and Sapphire Valley. Mountain laurel, blueberries and other heaths grow on the open bald of the summit, making it a truly special place. All of the views and natural surroundings, combined with electronic access through a stoned entry, a paved road, high-speed internet access and full cell phone coverage, makes Yellow Mountain Preserve an exceptional and unique piece of the Blue Ridge Mountains. Yellow Mountain Preserve is beautiful... by nature.

MLS 95168

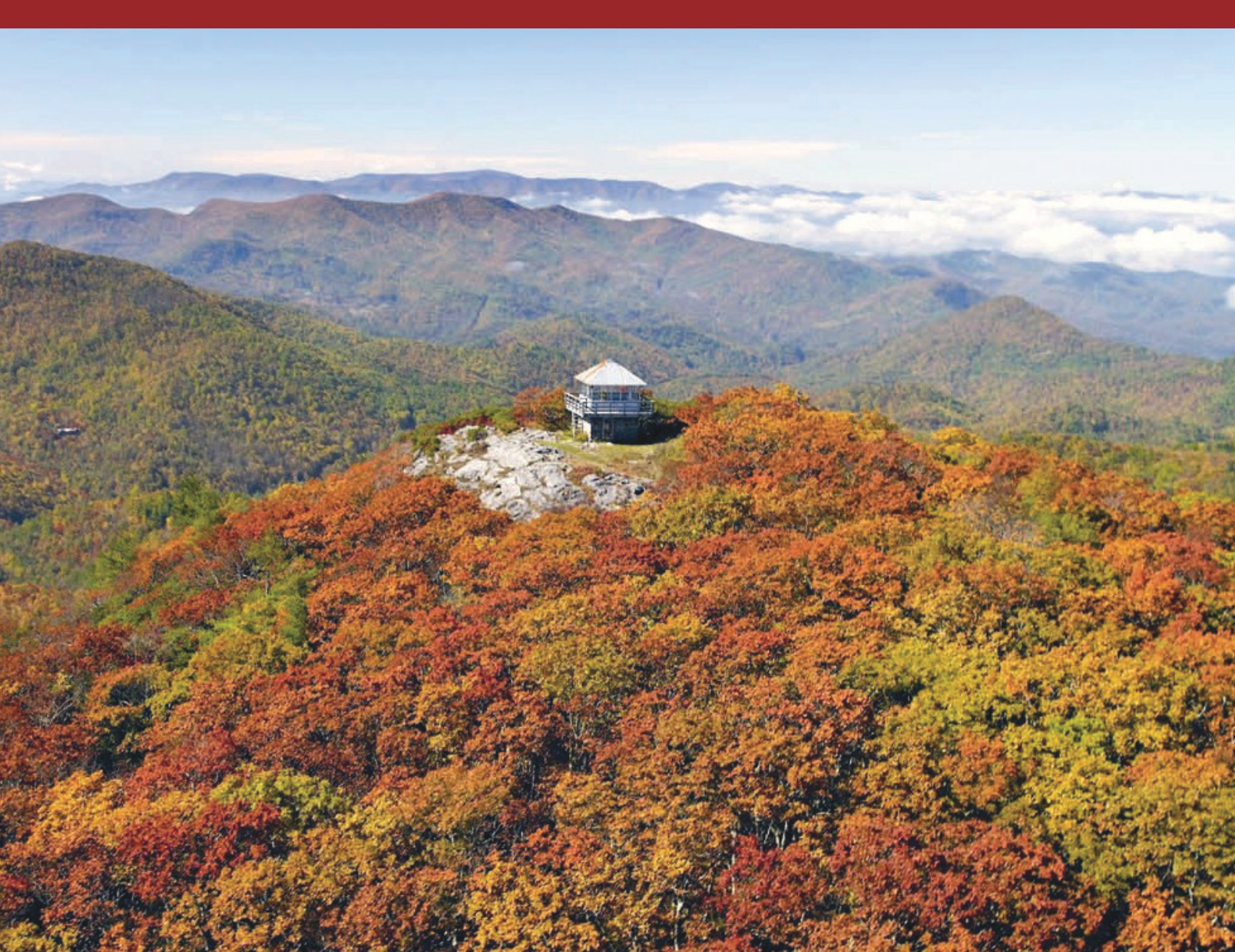


McKee
PROPERTIES



619 HWY 107 S | CASHIERS, NC 28717 | 828.743.3411

MCKEEPROPERTIES.COM



LIZ HARRIS, GUILD™

c 828.342.3194 | LIZ@CASHIERS.COM



McKee
PROPERTIES

Winfield Farm

OFFERED FOR \$6,950,000

142+/- ACRES — Nestled between national forest and a ridgetop of gorgeous mountain views lies the beautiful Winfield Farm. This multi-generational family farm is located in Scaly Mountain on the southern edge of the Nantahala National Forest just 10 minutes from Highlands, North Carolina. Winfield Farm features long range mountain views, gently rolling pastures, heirloom apple trees and gardens, spring-fed lakes and ponds, mountain streams, multiple homes, barns, and other structures. The main home is perched on a gentle knoll overlooking the farm, while two other homes are within easy walking distance. Another lovely home is tucked in a large meadow bowl that looks up to the surrounding

mountains. Two large barns, workshops, and a historic lodge are also contained within the 142 acres. Fabulous views can be enjoyed from everywhere on the farm/estate and the gentle topography makes the land very usable. A portion of the property fronts Dillard Road, offering great commercial potential on this parcel. Winfield Farm is just two hours from Atlanta and minutes from hiking trails, waterfalls, and all the clubs and amenities the Highlands-Cashiers Plateau has to offer. This is the first time on the market for this beautiful farm that has caught the eye of all who pass by. I look forward to showing it to you! **MLS 97357**

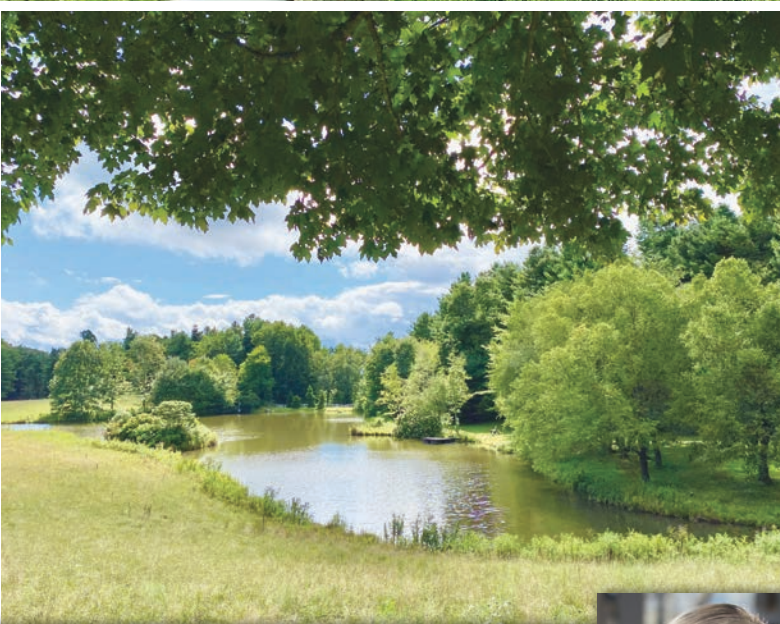
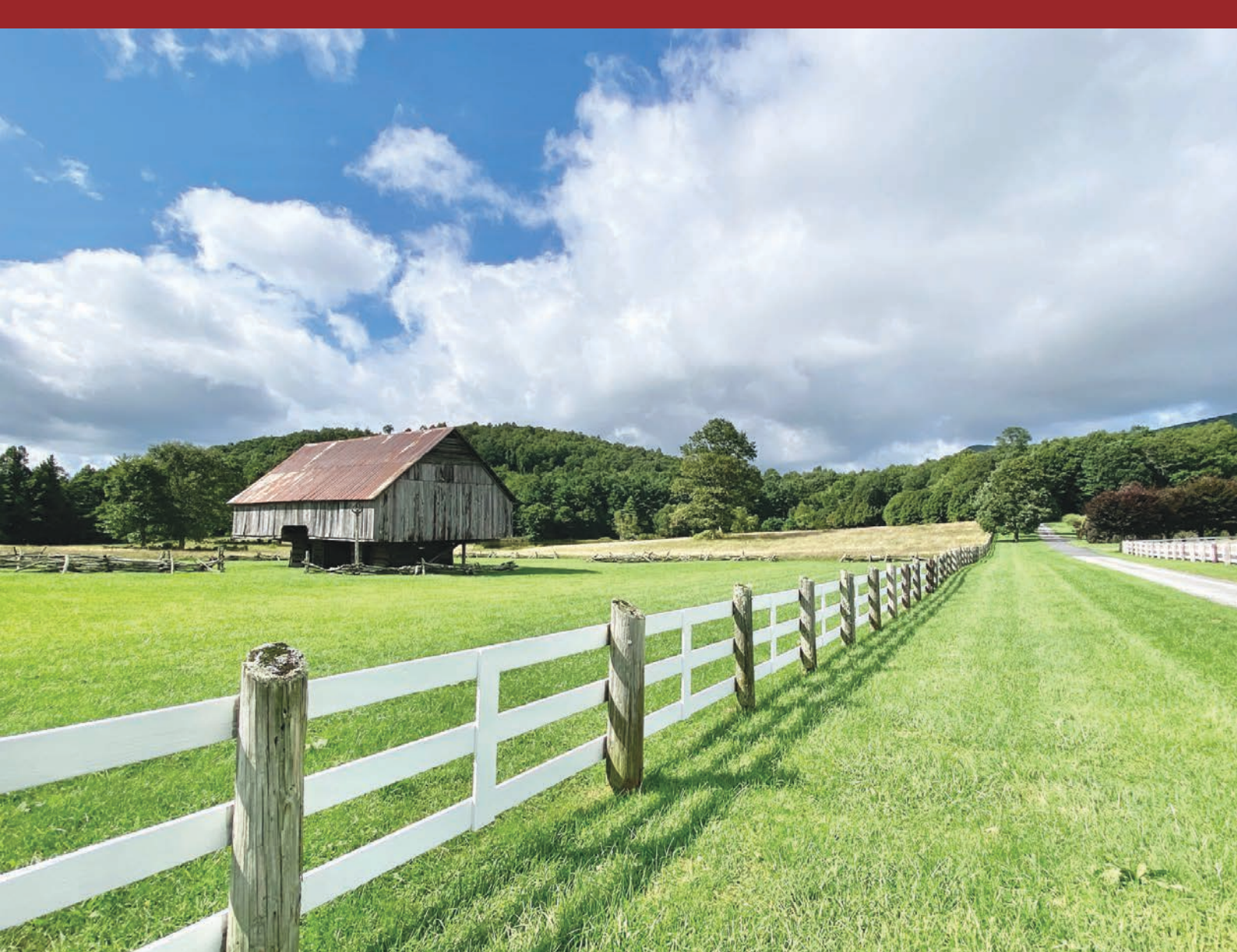


McKee
PROPERTIES



619 HWY 107 S | CASHIERS, NC 28717 | 828.743.3411

MCKEEPROPERTIES.COM



LIZ HARRIS, GUILD™

c 828.342.3194 | LIZ@CASHIERS.COM



McKee
PROPERTIES

Magnificent Private Estate

OFFERED FOR \$6,950,000

3 BR / 2 BA; 214+ ACRES — This fine estate property boasts all the wonderful outdoor features that draw people to Cashiers, NC: spectacular, long-range mountain views; rolling, open meadows (some fenced and cross fenced); a pond with an active, flowing stream and private waterfalls; and miles of trails! This property is unrestricted. The renovated cottage with recently updated bathrooms is charming and overlooks the majority of the property. Plus, there are many fine additional building sites for a future main house or subdividing. It is conveniently located only 9.5 miles from the middle of Cashiers. **MLS 95503**



McKee
PROPERTIES



619 HWY 107 S | CASHIERS, NC 28717 | 828.743.3411

MCKEEPROPERTIES.COM



Cedar Creek Road

OFFERED FOR \$2,800,000

200 ACRES — This pristine large tract located approximately five miles to the center of Cashiers is almost completely surrounded by three conservation easements: Chinquapin's (700 acres), The Webb family's (600 acres) and Campbell's (50+ acres). This parcel has old logging trails, rock outcroppings and a central "bowl" — prime for clearing as a meadow. A pretty stream headwaters on this high elevation tract and has several small sets of ripples and falls. The views have not been cleared, but will be substantial. **MLS 92920**



BETH TOWNSEND, GUILD™

c 828.421.6193 | BETH@CASHIERS.COM



McKee
PROPERTIES

Wade Hampton Golf Club

OFFERED FOR \$2,795,000

3 BR / 3.5 BA — This stunning, traditional mountain home designed by renowned architect Al Platt underwent a massive face lift in 2017. From the moment you enter the two-story light-filled foyer, and throughout the home, the luxurious appointments prevail. The large living room with coffered ceiling is central to two additional large gathering spaces that both have fireplaces, the sun porch with all new windows is geared toward the terraced garden, slate walkways, and doggie yard. The partially cantilevered porch is focused on an enormous view into forest service property and has electric screens,

built-in outdoor grill, and steps down to the fire pit, hot tub, and more gardens by Mary Palmer Dargan. This home is designed perfectly for al fresco living. Inside is a brand-new kitchen (with all upgraded appliances), laundry and baths. The master suite has heated floors in the bath, large shower with two steam units and sizable his and hers closets. Both guest suites are very private with access to the covered deck and share a bonus room for late night television or early coffee. There is an attached two-car garage and plenty of storage throughout the house. **MLS 97519**

UNDER CONTRACT



McKee
PROPERTIES



BETH TOWNSEND, GUILD™

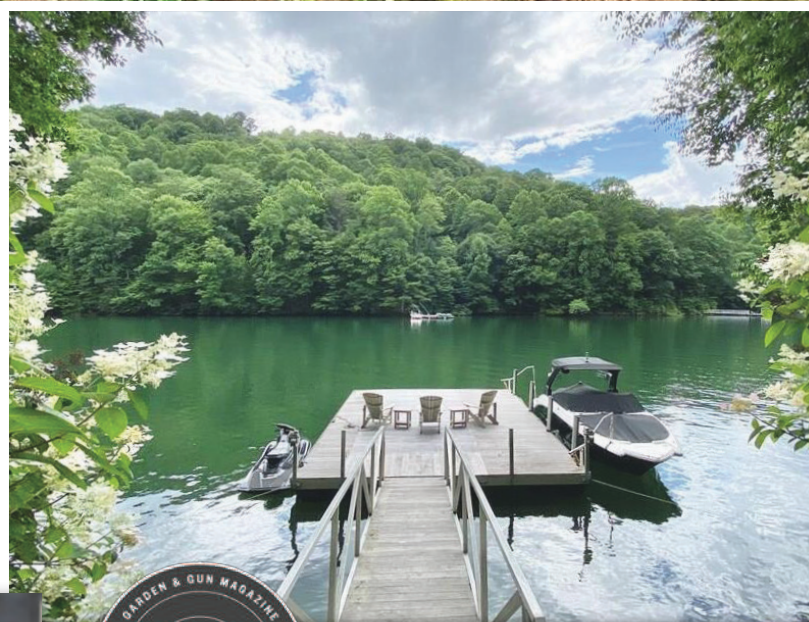
c 828.421.6193 | BETH@CASHIERS.COM

Glenville Lake Estates

OFFERED FOR \$2,350,000

4 BR / 4 BA — This beautiful lake home is set up to enjoy immediately with its updated interior, expansive decks and large dock all resting in a quiet cove on the desirable southeast side of Lake Glenville, close to town. The home features a master suite and guest room on the main level, a third guest suite on the upper level and a fourth suite on the lower level. The dining, kitchen and great room featuring a stone fireplace flow together with vaulted ceilings and lake views off the front deck to enjoy the pristine setting on the lake.

The large family and game room on the lower level provides for cozy evenings around the fireplace and a fun family game room, all while enjoying beautiful lake views. **MLS 96991**



LIZ HARRIS, GUILD™

c 828.342.3194 | LIZ@CASHIERS.COM



McKee
PROPERTIES

Little Ellijay Farm

OFFERED FOR \$1,772,000

4 BR / 4 BA — This beautiful 63-acre farm in the Cashiers/Glenville area beside the Snowbird Community is full of charm. It features gorgeous views, rolling land, a main house, a guest house, an

art studio, a large functioning barn, gardens, a chicken coop, fruit trees, fenced pasture land, fresh water ponds, springs and creeks throughout! Contact Liz today for a tour of this beautiful mountain farm. **MLS 97011**



McKee
PROPERTIES



LIZ HARRIS, GUILD™

c 828.342.3194 | LIZ@CASHIERS.COM

Wade Hampton Golf Club

OFFERED FOR \$1,495,000

3 BR / 3 BA — A McKee Development Neighborhood: This adorable yet sophisticated cottage underwent a massive head-to-toe remodel and expansion in 2020. The living room is anchored by a beautiful stone, floor-to-ceiling wood-burning fireplace. The screened and open porch takes in the peekaboo view of Whiteside Mountain. Painted wood paneling and handsome, wide plank wood floors carry throughout the house, and there is tile flooring in the mudroom and upstairs bath. The kitchen has newly cased openings creating an excellent connection to the common area of the house. Gorgeous white appliances, brass

hardware and specialty lighting enhance this space with a large dining room just off the kitchen. The master bedroom has a vaulted ceiling, large closet and bright bath with double vanities. The main level guest bedroom is nicely separated from the master bedroom. Upstairs, the addition of two shed dormer windows created a large loft bunk bedroom with its own private bath and closet. At present this room is open to the living area below, but with very little effort could be closed off to make a “real” large bedroom. This home is very convenient to the Clubhouse and has an easy on-grade driveway. **MLS 97551**



UNDER CONTRACT



BETH TOWNSEND, GUILD™

c 828.421.6193 | BETH@CASHIERS.COM



McKee
PROPERTIES

The Divide

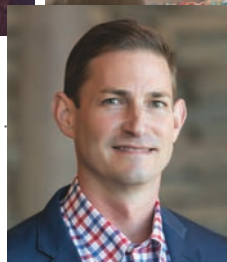
OFFERED FOR \$1,495,000

3 BR / 3.5 BA — Welcome to “The Tree House” in The Divide. This beautiful home has been meticulously maintained and cared for by its current owners. The serenity and privacy this property offers is everything you are looking for in a mountain home. Long range mountain views, a free-flowing stream through the property, and hundreds of acres of National Forest land across the street. The double carport offers owners and guests a covered walk-through to access the home. Upon entering the home, your attention is immediately drawn to the tall, double-sided stone fireplace. This open floor plan features cathedral ceilings, beautiful knotty pine paneling, and hardwood floors throughout. The mountain feel is accompanied by all the conveniences

of a modern up-to-date home. Two primary suites on the main level offer privacy and plenty of room. A loft overlooking the great room is a perfect office space or extra sleeping space for the big family weekends. The kitchen is efficient and well-equipped for every chef in the family. The outdoor living space has a fireplace and a view of the mountains and woods surrounding the property. You can hear the stream that is just a few steps away from the home. The lower level of the house offers a bonus living room space and a third bedroom. The third level down is an additional living space perfect for an exercise or game room. Each floor offers its own deck space. This home is coming fully furnished and turnkey! **MLS 97410**



McKee
PROPERTIES



MAGGIE ELMER | c 803.493.5734

PHILIP BRADLEY | c 843.224.5592

Wade Hampton Golf Club

OFFERED FOR \$1,400,000

3 BR / 3 BA — Located in Wade Hampton Golf Club, a McKee Development, this stately home offers lots of natural light and views of Whiteside Mountain. The paved loop driveway passes under a two-car carport with covered access to the home. Inside you'll find wood floors, a large living room with soaring ceilings and a floor-to-ceiling stone fireplace. All rooms are generous in size, and the bedrooms are nicely separated for ultimate privacy. The kitchen shares a generous

space with the nearby dining area and the porch. The laundry and home office are near the master suite. On the opposite end of the house is a bright, Pullman-style bar area with a sink, refrigerator and windows overlooking the view. Two en suite bedrooms and a large covered grilling and dining porch cap off the floor plan. This property has wonderful garden space and very easy access through the south gate of Wade Hampton. **MLS 95741**

UNDER CONTRACT



BETH TOWNSEND, GUILD™

c 828.421.6193 | BETH@CASHIERS.COM



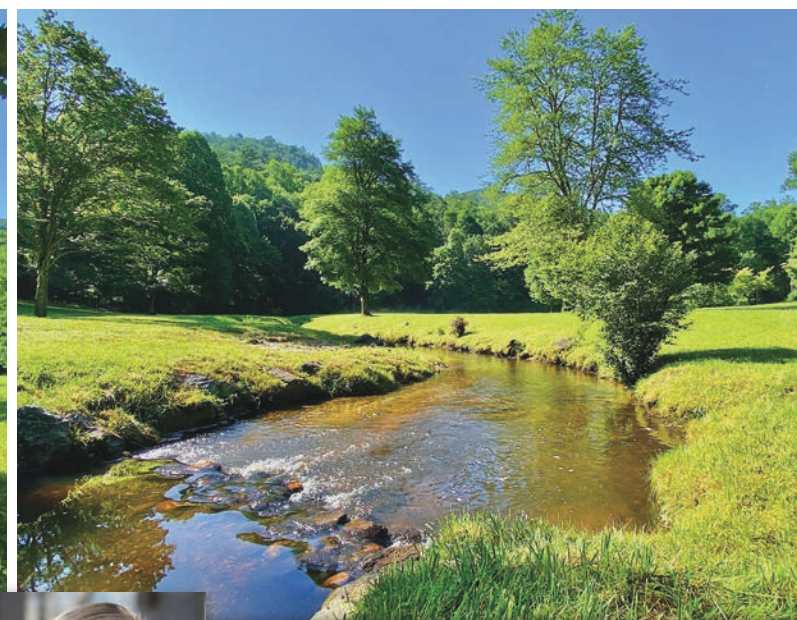
McKee
PROPERTIES

Whiteside Forest

OFFERED FOR \$1,400,000

3 BR / 3 BA — This is a charming log home on a serene and stunning acreage. From the extensive creek frontage and beautiful meadow to the year-round mountain view, this home offers a peaceful mountain retreat while located only 10 minutes from Cashiers. The floor plan boasts an open living, dining, and kitchen with two bedrooms and a bath on the main level. The upper level has a bonus loft and a guest suite, while the lower level has an expansive family room, wet

bar, two bonus rooms and a bathroom. The main level decks allow for full enjoyment of this peaceful setting and views. A bonus workshop on the property could be easily converted into a cozy guest house.
MLS 97046



McKee
PROPERTIES



LIZ HARRIS, GUILD™

c 828.342.3194 | LIZ@CASHIERS.COM

Glenville

OFFERED FOR \$1,295,000

3 BR / 3 BA — Farmhouse cottage meets arts and crafts, combining the best of both worlds, highlighting the value of simplicity, utility and beauty, importance of nature, and the respect of materials through fine craftsmanship. This captivating property consists of almost 13 private acres with outstanding long-range views. A sweeping, gently rolling circular driveway provides access to the main house, guest house, and freestanding one-car garage which all rest gracefully on a small knoll. Inside, there is beautiful wood flooring, paneling and ceilings, a stone wood-burning fireplace with second gas log fireplace, pressed vintage ceiling tiles, stainless steel and granite

counters, stainless steel appliances and tile baths. The main house has two nicely separated bedrooms, both on the main level, each with a nearby bathroom. There is a screened porch and open deck to enjoy the expansive views. Outside, a brief stroll will take you to the bewitching guest house with full bath, kitchenette and sleeping room. The one-car garage and “bonus” storage building which is tucked behind a lush bank offer plenty of room for hobbies or handyman tools. And the grounds! If gardening, appreciation for native and hybrid plants, and homegrown fruits and veggies is your thing, then you will really appreciate this delightful property. **MLS 97361**

UNDER CONTRACT



BETH TOWNSEND, GUILD™

c 828.421.6193 | BETH@CASHIERS.COM



McKee
PROPERTIES

Cullowhee Forest

OFFERED FOR \$855,000

3 BR / 3.5 BA — Located on 17+ acres with incredible mountain views, this move-in ready home is the perfect mountain retreat and sanctuary. Surrounded by towering hardwoods, mature rhododendron and other native flora, the house has stunning views of Pilot Knob and surrounding mountains. The well-maintained home features 3 bedrooms and 3.5 baths. The spacious kitchen has beautiful cabinetry and includes a breakfast area looking out onto the porch and the beautiful view. Next to the kitchen is an ample sized utility room with washer, dryer, and utility sink. The living room has a lovely stone faced, wood-burning fireplace, gorgeous wood floors, adjoins a spacious dining area, and opens onto a porch and deck that runs the length of the house. Also on the main

level is the master bedroom with doors opening to the deck and porch. Completing the master suite is a commodious walk-in closet and master bathroom with his and hers vanities, garden tub, and shower. On the lower level are 2 bedrooms and 2 baths, an inviting den, a light-filled office, large workshop area, storage space and a large deck. Added security is provided by a full featured alarm system and a whole house generator. The surrounding grounds feature native specimen plants, hiking trails and a small spring-fed pond. Whether inside partaking in the comforts of the well-appointed home or outside enjoying the natural beauty of the property, this is mountain living at its best! **MLS 96988**

UNDER CONTRACT



McKee
PROPERTIES



SANDY BARROW | c 478.737.9664

JOHN BARROW | c 828.506.9356

North Norton Road

OFFERED FOR \$795,000

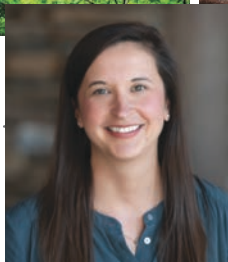
3 BR / 4 BA — If you are looking for a spacious home with amazing, long-range, mountain views, then this is the home for you! Located just 15-20 minutes from downtown Cashiers, this expansive home has plenty of room and storage for year-round residency or a great family retreat. You can find everything you need on the walk-in, main level living space including the master en suite, guest room and bath, laundry, living room and kitchen. The well-appointed kitchen is designed for master chefs and bakers alike! Beautiful built-ins line the hall and are perfect for displaying your latest literary finds. Cathedral ceilings and huge windows allow the living room and upstairs loft to be flooded with natural light. The fully finished lower level offers

additional living space with a wet bar, game room, workshop, full bath and office/additional bedroom. The main and lower level porches allow plenty of outdoor space to enjoy the mountains! **MLS 96734**



MAGGIE ELMER

c 803.493.5734 | MAGGIE@CASHIERS.COM



McKee
PROPERTIES

Bright Mountain

OFFERED FOR \$779,000

2 BR / 3.5 BA — This craftsman-style home features stunning views of Lake Glenville and the Smoky Mountains! Located behind the gate in the popular Bright Mountain community, this mountain cabin is the perfect retreat. The trademark highlights of the home include multiple bonus

rooms, large deck spaces overlooking the view for entertaining, and custom stained glass and rock work throughout the house. Conveniently located close to Cashiers, Lake Glenville and Highlands this home gives you easy access to dining, shopping, and countless outdoor activities. **MLS 97158**



Pinnacle Ridge

\$350,000

4+ ACRES — Located in Pinnacle Ridge, a gated/low density community off of desired Treasurewood Road. Large lot with long range views back to Lake Glenville from the gentle building site with a driveway already cleared. This is a perfect lot to build your mountain getaway! **MLS 95933**

Cedar Hill

\$145,000

2+ ACRES — This lot has been owned by the same family since 1993 and was chosen for easy access, its gentle building site and great potential views to the northwest with clearing. The lots on either side already have homes built, and due to their location, there is plenty of privacy on this ample-sized lot. **MLS 94780**

UNDER CONTRACT



McKee
PROPERTIES



BETH TOWNSEND, GUILD™

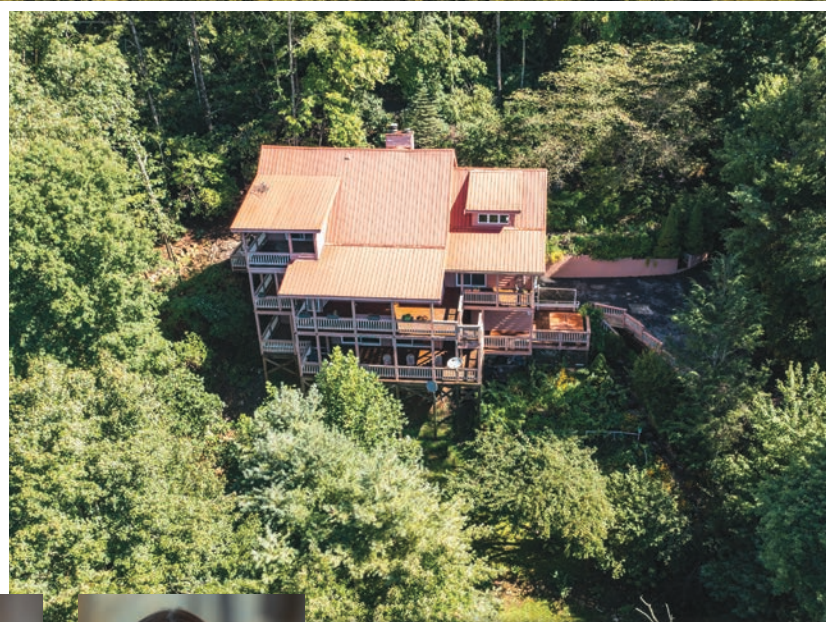
c 828.421.6193 | BETH@CASHIERS.COM

Sapphire High

OFFERED FOR \$749,000

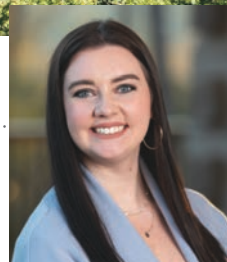
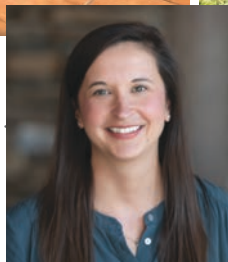
3 BR / 3.5 BA — This charming home with year-round views is located in the desirable neighborhood Sapphire High. The home is three levels with the living room, dining room, kitchen, a powder room and master bed and bath on the main level. The main level has an elegant stone fireplace and expansive windows to take in the spectacular view. The master has a walk-in closet and private access to the deck. Two levels feature expansive covered decks to enjoy the

refreshing mountain air. The second bedroom is on the upper level and has its own private balcony. Also upstairs is a loft space and an extra room that would be perfect for an office or craft room. The lower level has a third bedroom and bath, a family room, laundry room, one-car garage and a large workshop. Its large lot has a waterfall, boulder field and terraced yard space perfect for the outdoor enthusiast. **MLS 97276**



MAGGIE ELMER | c 803.493.5734

KARALINE SHOMAKER | c 828.200.1146



McKee
PROPERTIES



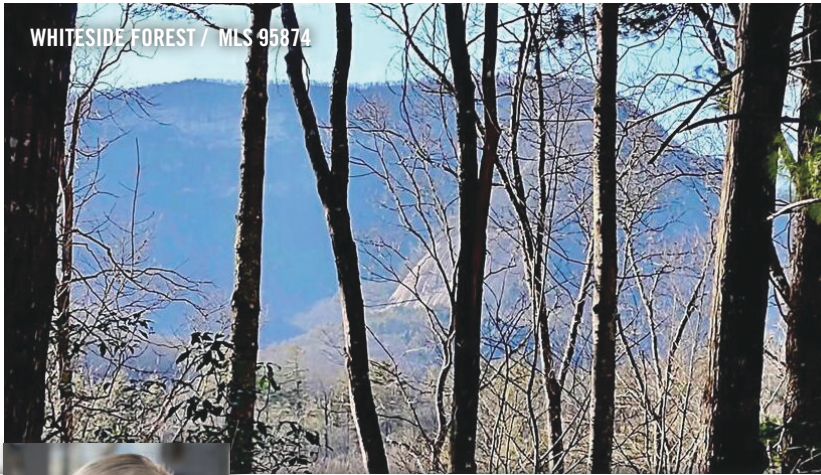
WADE HAMPTON GOLF CLUB

LOTS & LAND

LOT	ACRES	DESCRIPTION	MLS	SUBDIVISION	PRICE
N/A	30	Mountain views adjoining National Forest	97163	CASHIERS	\$895,000
E-158	1.30	Near level with mountain views UNDER CONTRACT	96021	MOUNTAINTOP GOLF & LAKE CLUB	\$599,000
E-32	0.92	Golf and mountain views	95880	WADE HAMPTON GOLF CLUB	\$475,000
E-215	3.78	Gently rolling with mountain views	95868	MOUNTAINTOP GOLF & LAKE CLUB	\$395,000
B-6	0.51	Flat lot near the Clubhouse	96186	CHATTOOGA CLUB	\$325,000
M-36	2.68	Whiteside Mountain views	95874	WHITESIDE FOREST	\$198,750
7	2.86	Mountain views with a stream running through	97119	CROSS CREEK PRESERVE	\$175,000
N-55	0.81	Gently rolling with winter golf course view	95803	WADE HAMPTON GOLF CLUB	\$160,000



MOUNTAINTOP GOLF & LAKE CLUB / MLS 96021



WHITESIDE FOREST / MLS 95874



McKee
PROPERTIES



LIZ HARRIS, GUILD™

c 828.342.3194 | LIZ@CASHIERS.COM

Wade Hampton Golf Club

LOTS & LAND

LOT	ACRES	DESCRIPTION	MLS	LOCATION	PRICE
ESTATE PARCELS					
L-8	3.85	National Forest and mountain views	94616	Silver Springs Road	\$375,000
GOLF FRONT					
E-32	0.92	Golf and mountain view	95880	Chimney Top Trail	\$475,000
N-19	0.66	Great golf views	96232	Fox Fire	\$225,000
N-55	0.81	Winter golf views, gently rolling	95803	Chimney Top Trail	\$160,000
MOUNTAIN VIEWS					
S-45	1.86	Long range mountain views UNDER CONTRACT	94825	Cherokee Trace	\$555,000
S-10	1.56	Mountain view, gently sloping	94614	Cherokee Trace	\$195,000
R-50	0.65	Mountain and golf views	96573	Cherokee Trace	\$ 60,000
FOREST FLOOR					
R-43	0.72	Gently rolling, end of cul-de-sac	95244	Ox Lock Road	\$185,000
R-25	0.91	Wooded, gently rolling	94896	Cherokee Trace	\$100,000
R-26	0.94	Wooded, easy build site	97657	Cherokee Trace	\$ 85,000
R-49	1.25	Access to Katydid Road or The Low Road	83185	Katydid Road	\$ 80,000
E-25	0.98	Gently rolling and wooded	96006	Mayapple Road	\$ 75,000

619 HWY 107 S | CASHIERS, NC 28717 | 828.743.3411

MCKEEPROPERTIES.COM



McKee
PROPERTIES



**SILVER RUN
RESERVE**

Welcome home.

A private, low-density mountain community, located five minutes from Cashiers, NC on the prestigious 107 South corridor.

With five distinct residential offerings, including cottages and estate homesites, Silver Run Reserve features curated and natural amenities for indoor and outdoor fun and wellness.

LIVE WELL. RUN FREE.

SilverRunReserve.com





LIZ HARRIS, GUILD™
 CO-OWNER / BROKER
 828.342.3194 (CELL)
 LIZ@CASHIERS.COM



McKee
 PROPERTIES



Full Remodeling
Design | Build
Kitchen | Bath
Metal Works
Cabinetry
Lighting
Granite
Tile



Beautifully designed. Perfectly detailed.

Design | Build Studio and Cabinetry, Tile, and Granite Showrooms
2251, 2220 N. 4th Street, and 2543 Cashiers Rd, Highlands, NC 28741
828 482 4424

blackrockdb.com

82491A

Glen Cove

by Old Edwards



Live a Life of Adventure and Wellness

in the beautiful Norton area of Cashiers, North Carolina

Amenities include a community garden, entertainment barn, spa and wellness center, heated mineral pool, mountain trails and a 12-hole, par-3 golf course.

Call 828-526-1783 to Schedule a Tour Today | GlenCoveLifestyle.com



Downtown Cashiers

341 Highway 64 West
Cashiers, NC 28717
(828) 743-1999

Lake Glenville Discovery Center

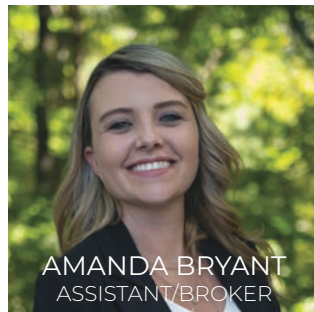
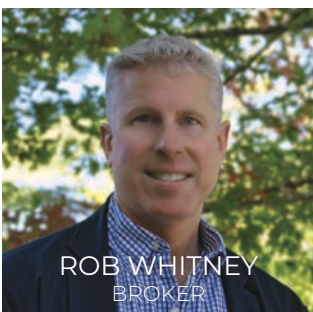
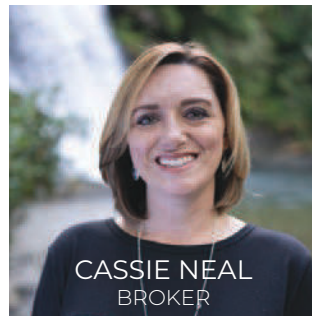
4312 Highway 107 N
Glenville, NC 28736
(828) 743-1999



Downtown Highlands

537 Main Street
Highlands, NC 28741
(828) 526-2999

LOCALLY OWNED.
INDEPENDENTLY OPERATED.



A Founding Partner



McKee Properties is proud to be a Founding Partner of G&G Land, a feature program of *Garden & Gun* magazine, highlighting properties that are dedicated to an “authentic sense of place and inherent responsibility to the natural world.”

MORE THAN 40 YEARS OF LUXURY REAL ESTATE
EXPERTISE IN THE CASHIERS-HIGHLANDS AREA

MCKEEPROPERTIES.COM
828.743.3411



McKee
PROPERTIES