

# Get your **FREE** Fall on Route 66!

**FREE**  
Take One



# EXPLORE Oklahoma

**2020 Travel Guide**



*Get Listed,  
Get Sold,  
Get Moving!*

**GREG MORLEY**  
OWNER/BROKER  
580-774-9602



# EAGLE REALTY

THE MORLEY GROUP

TOP SELLING FIRM IN WEATHERFORD\*

701 E. MAIN ST. SUITE D  
LEGACY BANK PLAZA

OFFICE: 580-772-8300  
EAGLEREALTYOK.ORG



**LINDA  
KROEKER**  
580-772-4715



**AMANDA  
HILL**  
580-774-8301



**GLEN  
BARNEY**  
580-774-9892



**LAVON  
OVERTON**  
580-772-4663



**LINDA  
WILBURN**  
580-774-9419



**JES  
FLEMING**  
580-302-1159



**CHRISTINA  
MCSPERRITT**  
580-330-1548



**LAURA  
SWEENEY**  
405-641-3902



**TERRI  
MULNIX**  
405-519-0841



**NEELY  
TUCKER**  
405-313-3642

THE PROFESSIONALS AT EAGLE REALTY-THE MORLEY GROUP  
LOOK FORWARD TO WELCOMING YOU HOME.



Like us on  
**Facebook**



\*According to 2016, 2017 & 2018 MLS Reports



# DAVIS PROPERTIES LLC

580.772.0606 • 110 W. Main  
davispropertiesok.com

Listing, Selling,  
& Results!



Milan Davis  
580-774-9711



Debbie Melton  
580-774-4040



Benny Pugh  
580-819-2738



Patricia Colston  
580-799-1843



Nick Davis  
580-819-2038



Angela Cornell  
580-445-6096



Kyle Slagell  
405-542-7179



Jordan Fuller  
580-302-3604



Brenda Franks  
580-890-0373



Mila Tate  
580-277-9333



Emelie Atchley  
580-330-2607



Ashley Gotcher  
580-772-0606





We want to share the  
*Joy*

and we invite you to join us  
in the *Glory of God*

**WORSHIP WITH US**  
**SUNDAYS 10AM**  
**WEDNESDAYS 7PM**

109 West Franklin  
Weatherford

[www.LCI.online](http://www.LCI.online)

Our new campus coming soon!



Senior Pastors Marquieta and Scott Page



**LIBERTY CHURCH**  
INTERNATIONAL

**Welcome...**

**to the finest spirit selections  
in Western Oklahoma!**



**407 E. Main • Weatherford • 580-772-1444**

# MAGILL

Insurance  
Real Estate

Serving the Weatherford area  
for over 45 years!



See us to  
Buy, Sell or Rent.



[MagillAgency.com](http://MagillAgency.com)

580-772-7101

322 East Main Street • Weatherford, Oklahoma



**Wes Magill**  
330-7101



**Karen Magill**  
302-2009



**Thomas Merritt**  
302-1213



**Matta Wright**  
819-1396



**Bobby Wright**  
819-1895



**Julie Gathers**  
405-301-3737

Bienvenido a

# PECINA'S MEXICAN CAFE

Weatherford, Oklahoma  
1711 East Main Street  
580-772-2329





# SWOSU

Southwestern Oklahoma State University

**Home of 14 Nationally Accredited  
Academic Programs**

**Most Among all Oklahoma Regional Universities.**



**Pioneer**  
Cellular



**PIONEER EVENT CENTER**

**One of Oklahoma's Finest Facilities for  
Meetings, Concerts, Athletic Events and More!**

[www.swosu.edu](http://www.swosu.edu)

# Stafford

---

## AIR & SPACE MUSEUM

---

**ONE OF OKLAHOMA'S  
MUST SEE ATTRACTIONS**

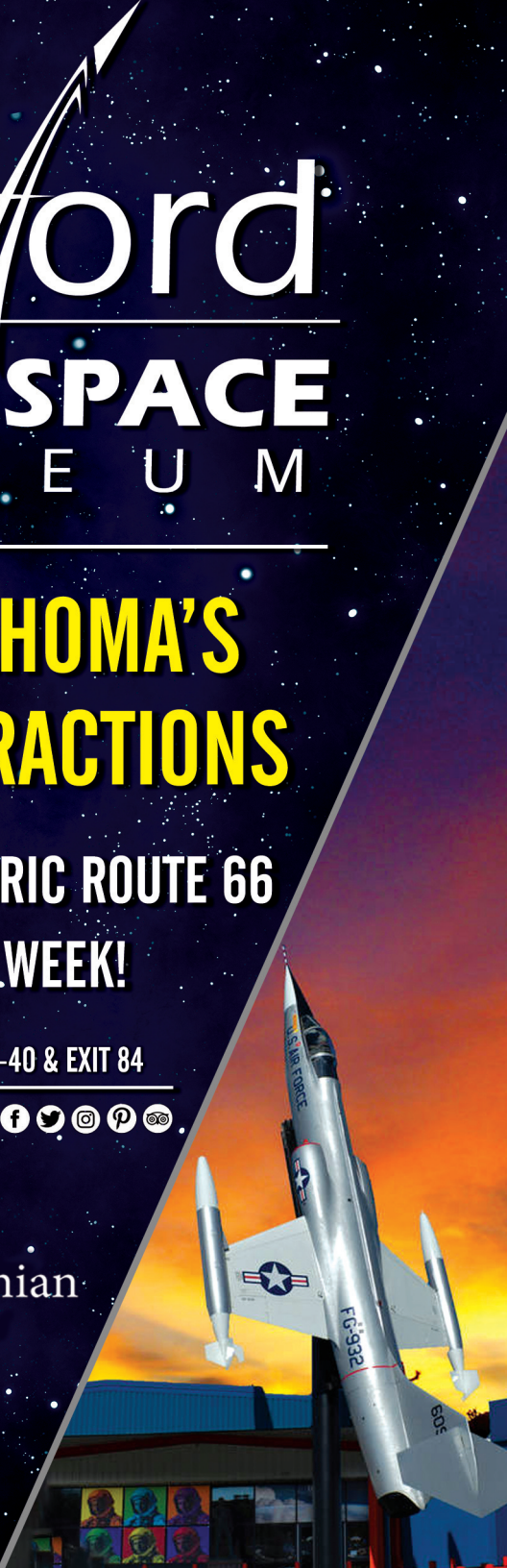
**LOCATED ALONG HISTORIC ROUTE 66  
OPEN 7 DAYS A WEEK!**

**3000 E LOGAN RD ★ WEATHERFORD OK ★ I-40 & EXIT 84**

**580.772.5871 ★ STAFFORMUSEUM.ORG ★**



**Smithsonian**  
*Affiliate*





Casa Soto is a Mexican Restaurant built up by traditional family recipes. For the last 34 years, we have prided ourselves on treating you like family.

Come in for *authentic* Mexican cuisine, stay for the at home, *family* atmosphere.

580.772.0232 • 115 SW MAIN ST • WEATHERFORD, OK

## **Tinsley's "Old 66 Hwy." RV Park**

Use Exit 84 at Airport Rd.  
Turn North to Service Rd.  
Turn West 3/4 miles



*Call for Daily, Weekly and Monthly Rates*

**580-772-2902**

**2701 E. Main • Weatherford**



# Jerry's

RESTAURANT

- an original since 1966 -

## 24-Hr Service

Stop by  
for a home  
style meal  
**ANYTIME!**



1000 E Main, Weatherford, Ok

GET THE BEST  
HEATING & A/C  
SERVICE PLAN



# IN OKLAHOMA!

2 TUNE-UPS PER YEAR!

DISCOUNTED PARTS, LABOR, & PURCHASES!

**FREE LABOR WARRANTY!  
AND MORE!**



# 0%

FINANCING AVAILABLE  
THRU WELLS FARGO  
UP TO 6 YEARS

PUBLIC SERVICE  
COMPANY OF  
OKLAHOMA

REBATES UP TO \$800

30% Tax Credit On Geothermal  
Until The End Of The Year  
Plus \$1000 Per Ton From CK Energy

# 580-819-1089

223 E Main St  
Weatherford

Preferred<sup>TM</sup>  
SERIES



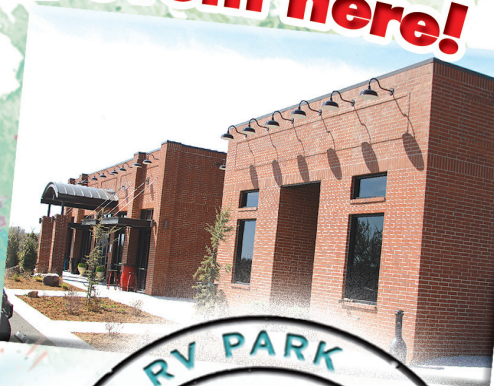
CenterPoint Rebates  
Up To \$2,000



# ADVENTURE PARKS HERE



## ADVENTURE HALL Plan your next event here!



- RV Rallies
- Family Reunions
- Corporate Meetings
- Birthday Parties
- Anniversaries
- and much more!



**Exit 84 South 1/4 of a mile  
East side of the road**

**580.772.2800 • 1038 Airport Road  
wanderlustcrossings.com**

Oklahoma's Premiere RV Attraction  
**Weatherford, OK** on Route 66



- Drive Thru RV Pads
- Shower Facilities
- Complimentary WIFI
- Propane
- Individual Fire Pits
- Play Yards
- Game Rooms
- Laundry Facilities
- Big Rig Friendly
- 30/50/100 amp service

**ADVENTURE PARKS HERE**



**580.772.2800 • 1038 Airport Road**  
**wanderlustcrossings.com**




Furniture . Antiques . Candles . Window Coverings



(580) 772-2238

[www.UptownMarketPlace.com](http://www.UptownMarketPlace.com)

Find us on 



1225 E. Main St., Weatherford, OK



*Serving all of  
Western Oklahoma*

**PIPE & WELD FITTING • VALVES • STRUCTURAL STEEL  
SAFETY SUPPLIES • PUMPS & REGULATORS  
TOOLS • RUBBER PRODUCTS • CUSTOM HOSES  
PUMP REPAIR (METHANOL & GLYCOL PUMPS & REGULATORS)**

(580) 772-2521 • 400 SE ACCESS RD, WEATHERFORD  
MON-FRI 7AM-5PM • SAT 7AM-12PM • SUNDAY CLOSED



Did you know we are  
**Always On Call**  
for our customers

Need your prescriptions after hours...not a problem. Give us a call and we will be there for our customers!

- Over 20 Years in Business •
- Extensive Gift Lines •
- Home Deliveries •
- Smartphone & web refills •
- Charge accounts available •

**Mike Schmitz**  
Registered Pharmacist



**We're here for you!**  
If you have been using another pharmacy...  
give us a chance to win you over.

**We Care For You.**



# Walmart

Save money. Live better.



Wherever the road takes you,  
**we're here to help.**



(580) 772-1408 • 1349 Eagle Rd • [walmart.com](http://walmart.com)



Find us on  
Facebook



# Come fly with me

## Soaring to new Heights

### Join us on the Journey

**Ask us about how your membership  
will make a difference.**

Marketing Weatherford  
Networking  
Tourism  
Retail Events  
New Business Salutes  
Training Seminars  
Agriculture Events  
Leadership Program  
..and so much more!



# Weatherford Chamber of Commerce

**1-580-772-7744**

**[www.WeatherfordChamber.com](http://www.WeatherfordChamber.com)**



# BRANDHORST REALTY & RENTALS



## LET'S TALK REAL ESTATE!

**SUE BRANDHORST  
BROKER, GRI  
(580)772-4410**



**(580)772-8152**

**Brandhorst Realty**

Weatherford, OK

**BRANDHORSTREALTY.COM  
BRANDHORSTRENTALS.COM**



## WIND TURBINE TOURS

are offered by appointment throughout the year.

Hours are:

Tuesday-Friday:  
9am-5pm

\*48 hour notice is required.



# HEARTLAND OF AMERICA MUSEUM

1600 S. Frontage Road  
Weatherford, OK • 580-774-2212  
Tues-Fri: 9am-5pm  
Saturday: 1pm-5pm





# Weatherford's #1 Dispensary

**Cannabis - Edibles - Accessories**

**Find us on  
Weedmaps**

**New!!! Lower Prices**



# PROHIBITION



MEDICAL MARIJUANA DISPENSARY



115 West Rainey • Weatherford, OK • 580-302-8506

# ACE<sup>®</sup>

The **helpful** place.

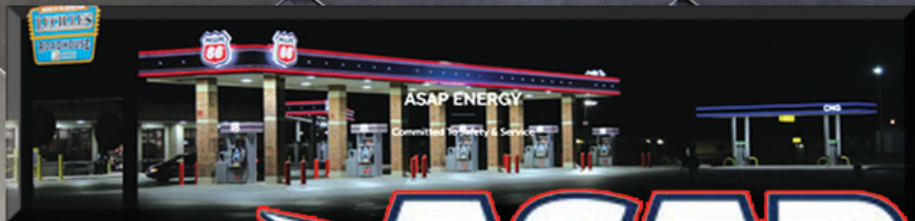
**YOUR WEATHERFORD ACE HOME CENTER  
& LUMBER COMPANY**

MONDAY - FRIDAY 7:30 a.m. - 8 p.m.

SATURDAY 7:30 a.m. - 8 p.m.

SUNDAY 9 a.m. - 7 p.m.

**800 E. MAIN • WEATHERFORD • 580-772-7781**



**Wholesale Fuel & Oil**



**Retail**



**Lucille's Roadhouse**

**Advertising**



**ASAP ENERGY, INC**  
1501 Airport Road  
Weatherford, OK 73096  
580-772-6076

**ASAPENERGYINC.COM**





Miss Trudy's

Past & Present  
ANTIQUES & MORE

580-774-2088

A GREAT MIX OF OLD & NEW



TAKE A WALK DOWN  
MEMORY LANE WITH US!

Check us out  
on Facebook!

106 W. Main Street  
Weatherford, OK

HOURS:

Mon-Sat 10am-6pm



@MissTrudysPastPresent



# BOKAYS

BY NINA



3 CANDLE LINES  
COLONIAL  
WOODWICK  
YANKEE

**WE DELIVER!**

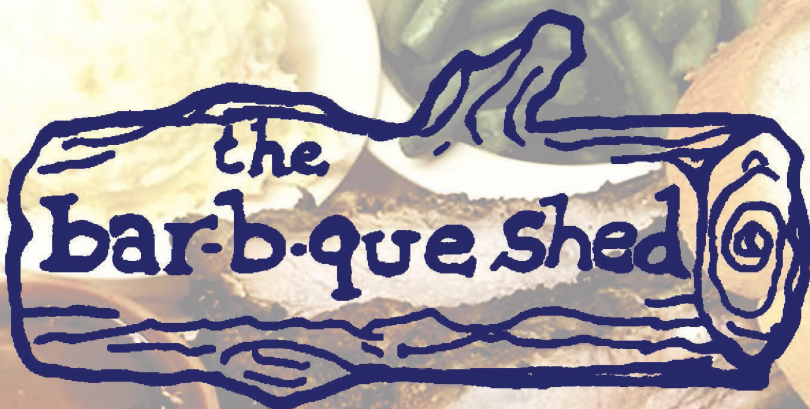
UNIQUE GIFTS  
HOME DECOR  
PICTURE FRAMES  
GREAT GIFT IDEAS  
HOME FRAGRANCE  
LOTIONS  
& MUCH MORE



121 W. Main-Hydro, OK  
405-663-2827 • Emergency # 580-819-1549

*Custom Smoking*

*Catering Service*



Fantastic bar-b-que,  
homemade sides, and  
even Beef Jerky!

580-772-6383

1230 Weatherford  
Shopping Center  
Weatherford, OK

# Worry-free Honeymoon travel



**TRAVEL** Unlimited  
BY LINDA

119 E. MAIN WEATHERFORD, OKLAHOMA 73096

580.302.2185

LINDA FINNELL, OWNER

LINDAFINNELL@YAHOO.COM



## Et Cetera Shop

IN THE NAME OF CHRIST

Serving the Community Locally and Globally

Monday - Saturday  
9:30am - 5:00pm

121 N. State • 772-7531

121 E. Main • 774-2820



**MAIN STREET**

**STATE STREET**



- Bulk Food
- Furniture
- Books
- Bedding
- Large Appliances
- TV's



- Clothing
- Shoes
- Household
- Small Appliances
- Craft items
- Silent Auction

# WEATHERFORD PARKS

## SAND PLUM TRAIL



The City of Weatherford has twelve parks with many picnic and play areas. The parks located here are very popular within their community and host numerous events ranging from softball and baseball tournaments to classic car shows.

There are basketball courts, baseball fields, exercise equipment, a splashpad, fishing areas, rodeo grounds, and more! There's something fun for everyone in Weatherford, OK.



## CENTENNIAL PARK



## SPLASH PAD

# THE OLE FISHIN' HOLE AT RADER PARK

# Welcome to Weatherford

For over 50 years there's got  
to be a reason they call us  
**First!**



**FIRST NATIONAL BANK  
& TRUST COMPANY**

1100 E. Main  
580-772-5574



MEMBER FDIC

Weatherford  
[www.fnbwford.com](http://www.fnbwford.com)

**DRIVE  
THROUGH  
PHARMACY**  
and local delivery



We carry a large selection of  
**DIABETIC**  
supplies and equipment

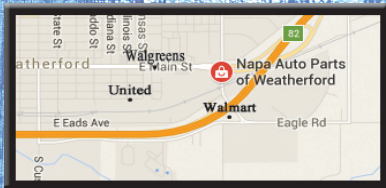
**OPEN  
Mon-Fri  
9am-6pm  
Saturday 9:30-1**

**Health Express**  
PHARMACY

1001 N. Washington, Weatherford  
774-1200 or 1-800-404-8239  
[www.healthexpresspharmacy.com](http://www.healthexpresspharmacy.com)

**WEATHERFORD NAPA**

**115 S. WASHINGTON • WEATHERFORD  
580-302-8673**



**MONDAY - FRIDAY 7:00AM-6:00PM  
SATURDAY: 8:00AM-2PM**



# Ricks Boots & Outfitters

[ricksbootsandoutfitters.com](http://ricksbootsandoutfitters.com)



Western Oklahoma's  
Largest Selection  
Justin Boots



Boots, Clothing &  
Accessories  
for men & Women



Inside the Phillips 66 General store at  
1401 Airport Rd • 772-5618 • Weatherford



# Kelley JEWELERS

DOWNTOWN WEATHERFORD



WWW.KELLEYJEWELERS.COM



0220688

The Forevermark Tribute™ Collection

FOR ALL  
THAT YOU ARE



FOREVERMARK

A DIAMOND IS FOREVER

DE BEERS GROUP

© Forevermark 2019. Forevermark®, , FOREVERMARK™, Forevermark Tribute™ and DE BEERS GROUP™ are Trade Marks used under license from De Beers Group.

Caring...  
*close by*



## Our Family Practice Physicians



Michael Aaron, M.D. J.M. Huser III, M.D. Brenda Stutzman, D.O. Blake Badgett, M.D. Brian Bluth, M.D. Ray Long, M.D. Marshall Huser, M.D. Mary Hines, M.D.

Wound Care Clinic 215 N. Kansas 816-4050	Ear, Nose & Throat Clinic David Hunter, MD 3739 Legacy (580) 774-4770	Physical Therapy Clinic 3729 Legacy (580) 772-2604	Surgery Clinic John Buie, MD 213 N. Illinois (580) 774-5089
--	--	--	--

## Qualified Visiting Specialists

We bring in some of Oklahoma's finest visiting specialists to assist you with your every need.



## Convenient Care

Mon-Sat 7:30am - 6:30pm

**MAIN ENTRANCE**

Check in online at  
[www.weatherfordhospital.com](http://www.weatherfordhospital.com)

or call 580-772-5551

# RE/MAX<sup>®</sup>

Serving  
Western Oklahoma  
& Surrounding Areas!



**Jennifer Kimzey**  
Broker  
580-497-6831



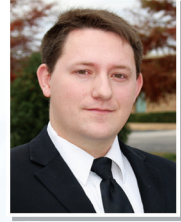
**Shana Arnold**  
Realtor<sup>®</sup>  
580-374-2222



**Sarah Dewese**  
Realtor<sup>®</sup>  
580-334-1899



**Katy Candy**  
Realtor<sup>®</sup>  
580-449-1108



**Brian Wallis**  
Realtor<sup>®</sup>  
580-890-0236

## Gold Buckle Realty

### 580-330-9090

[www.goldbuckle Realty.com](http://www.goldbuckle Realty.com)  
Each office independently owned and operated



# LUG-A-JUG

*Great*  
**SELECTION  
PRICES  
SERVICE**

## WINE - BEER - SPIRITS

580.772.7342 • Mon-Sat 10am-9pm  
101 E. Rainey, Weatherford, OK

@lugajug  
 LugAJug





**We've got deep roots  
in Western Oklahoma.**

*Oil & Gas | Bankruptcy | Litigation | Healthcare  
Landowner's Rights | Agriculture Law  
Employment | Business Law | Wills & Estates*



**CHRISTENSEN**  
LAW GROUP, P.L.L.C.

Clinton Office | 580.302.6400  
Thomas Office | 580.302.6370  
OKC Office | 405.232.2020  
[christensenlawgroup.com](http://christensenlawgroup.com)



**Prairie  
West**  
Golf Club at Weatherford



Play Prairie West  
today!



18 Hole Public Course • Cart Rentals  
Pro Shop • Club House  
Wedding, Banquet, and Reception  
facilities available.



**Prairie  
West**

Golf Club at Weatherford

Call today 580-772-3832

3500 North Lyle Road  
Rader Park North of Weatherford

[www.prairiewestgolf.com](http://www.prairiewestgolf.com)





## **Weatherford, Oklahoma**



**Indoor Pool**



**The Perfect Sleep**



**Banquet Room**



**Breakfast Bar**

**Holiday Inn Express & Suites Weatherford**  
**3825 East Main • Weatherford, Oklahoma 73096**  
**1 580 774-0400**

*Blast from  
the past...*



*to the future!*



 Find us on  
Facebook

**Diner • Steakhouse • Rt. 66 Gift Shop**



**Open Mon-Sat 6am-10pm, Sun 11am-9pm**

**1-(580)772-8808**

**1301 Airport Road • Weatherford, Oklahoma**  
[www.lucillesroadhouse.com](http://www.lucillesroadhouse.com)





Located in southeastern Custer County,

Weatherford is situated one mile north of Interstate 40 on State Highway 54. The surrounding area was made available for homesteading during the Cheyenne-Arapaho Opening on April 19, 1892.

The town was incorporated on August 3, 1898, and the population stood at 1,017 in 1900.

Banker and civic leader Beeks Erick chose the townsite location.

Weatherford became a tent city overnight, and within six months the town had two thousand residents.

By 1907 statehood the population stood at 1,315 and by 1910, 2,118. The 1930 and 1940 censuses reported 2,417 and 2,504, respectively.

Although the town was known as “wild and wooly,” permanent residents began to make it a progressive community suitable for rearing families. Churches, schools, and community organizations became a reality.

In 1901 Mangum, Mountain View, and Granite vied with Weatherford to become home to Southwestern Normal School (now Southwestern Oklahoma State University). With the outcome favorable

to Weatherford, the institution celebrated its centennial in 2001.

Route 66 came down Main Street, and some stretches of the old highway remained at the turn of the twenty-first century.

An influx of oil companies and workers came during the oil boom in the late 1970s and early 1980s. The number of inhabitants jumped from a 1960 figure of 4,499 to 9,640 in 1980. Population peaked at 10,124 in 1990.

The airport, named for astronaut Gen. Thomas P. Stafford, a Weatherford native, houses the Thomas P. Stafford Airport Museum.

# Weatherford



# Heartland of America Museum

Opened June 2007, the Heartland of America Museum chronicles life in western Oklahoma by preserving historical artifacts and providing authentic and educational displays of the various aspects of life in the Heartland of America.

Featuring 12,000 square feet of exhibit space, the museum showcases exhibits about things ranging from: The Depression, Drug Stores/Pharmacies, WWI through the Iraq War, and Communication Technology. This is a must see for anyone interested in the progression of America throughout the 20th century. The Heartland of America Heritage Center is located at 1600 S. Frontage Road, Weatherford, Oklahoma, on the south side of I-40, between exits 82 and 84. For more information, please call (580) 774-2212.



## Western Oklahoma Historical Center

Located one block north of the Weatherford City Hall, the Western Oklahoma Historic Center has many things to offer those wanting to view what life was like for pioneers at the start of the 20th century. Featuring an authentic one room school house and cabin (located across from the post office), this museum proudly shows exhibits from the period, as well as, allows patrons to experience what schooling was like at the turn of the century.

The Center is also home to the Western Plains Genealogical Society, which has a collection of resources for those wishing to learn about their family's past.

Open:

Tues. • 2:00 - 4:00 p.m.

Thur. • 6:00 - 8:00 p.m.

Sat. • 10:00 a.m - 12:00 p.m.



# Weatherford SplashPad

The Weatherford SplashPad is open to the public with free admission for all ages. The SplashPad is located just north of the tennis courts at Rader Park.

The new area was made possible in part by the Yes! Weatherford sales tax campaign. The large yellow bucket at the top of the SplashPad drops twenty gallons of water on unsuspecting participants. The SplashPad sits on 5,000 square feet. The City of Weatherford estimates between 7,000 and 8,000 people visited the SplashPad during its first open season.

In order to ensure safety for all people using the facility there are rules that should be followed. Users should always evacuate the premises in the event of inclement and stormy weather. Adult supervision is required. No alcoholic beverages or glass containers are allowed on the premises.

Children that wear diapers are required to wear swim diapers when on the SplashPad. Clean footwear is recommended and cleats are not allowed in the SplashPad area. Running and climbing on the water features is prohibited. Be respectful of others – no bullying.

Bicycles, skateboards and rollerblades are not permitted within the SplashPad. Please do not take food or beverages into the SplashPad fence. It is recommended that anyone with bandages, cuts or scrapes not use the SplashPad. Remember that there are no life guards on duty at the SplashPad and use of the facility is at user's own risk – incase of emergency call 911.



Weatherford Splash Pad  
Route 66 Weatherford, OK

# The History

**A**lthough entrepreneurs Cyrus Avery of Tulsa, Oklahoma, and John Woodruff of Springfield, Missouri deserve most of the credit for promoting the idea of an interregional link between Chicago and Los Angeles, their lobbying efforts were not realized until their dreams merged with the national program of highway and road development.

Officially, the numerical designation 66 was assigned to the Chicago-to-Los Angeles route in the summer of 1926. With that designation came its acknowledgment as one of the nation's principal east-west arteries.

Route 66 was a highway spawned by the demands of a rapidly changing America. Contrasted with the Lincoln, the Dixie, and other highways of its day, route 66 did not follow a traditionally linear course. Its diagonal course linked hundreds of predominantly rural communities in Illinois, Missouri, and Kansas to Chicago; thus enabling farmers to transport grain and produce for redistribution.

The diagonal configuration of Route 66 was particularly significant to the trucking industry, which by 1930 had come to rival the railroad for preeminence in the American shipping industry.

The abbreviated route between Chicago and the Pacific coast traversed essentially flat prairie lands and enjoyed a more temperate climate than northern highways, which made it especially appealing to truckers.

By 1970, nearly all segments of original Route 66 were bypassed by a modern four-lane highway.

## Route 66 Facts

Current maps do not include old Route 66. The last stretch of the road disappeared from "official" maps in 1985.

Route 66 starts in Chicago, Illinois and ends in Santa Monica, California. The Corvette has become a Route 66 icon.

According to most sources Route 66 is 2448 miles long (about 4000 km). However, this is a rough approximation as the road has had many different alignments through the years.

Route 66 crosses 8 states and 3 time zones. The states that the Mother Road runs through are: Illinois, Missouri, Kansas, Oklahoma, Texas, New Mexico, Arizona, and California.

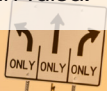
# of Route 66

## More Route 66 Facts

Route 66 is also known as “Mother Road”, “The Main Street of America” and “The Will Rogers Highway”. 85% of the road is still drivable.

Oklahoma has more miles of the original Route 66 than any other state.

Cyrus Stevens Avery from Tulsa, Oklahoma can be called the father of Route 66. Mr. Avery lived in Tulsa.



In many respects, the physical remains of Route 66 mirror the evolution of highway development in the United States from a rudimentary hodge-podge of state and country roads to a federally subsidized complex of uniform, well-designed interstate expressways.

Various alignments of the legendary road, many of which are still detectable, illustrate the evolution of road engineering from coexistence with the surrounding landscape to domination of it. Route 66 symbolized the renewed spirit of optimism that pervaded the country after economic catastrophe and global war.

Often called, “The Main Street of America”, it linked a remote and under-populated region with two vital 20th century cities – Chicago and Los Angeles.

The outdated, poorly maintained vestiges of U.S. Highway 66 completely succumbed to the interstate system in October 1984

when the final section of the original road was bypassed by Interstate 40 at Williams, Arizona.

Now that the highway has celebrated its 75th birthday, its contribution to the nation must be evaluated in the broader context of American social and cultural history.

The appearance of U.S. Highway 66 on the American scene coincided with unparalleled economic strife and global instability, yet it hastened the most comprehensive westward movement and economic growth in United States history.

Like the early, long-gone trails of the nineteenth century, Route 66 helped to spirit a second and perhaps more permanent mass relocation of Americans.

We only hope it does not meet the fate of these once-famous arteries.

<https://www.national66.org/history-of-route-66/>



**EXPLORING**  
*Broken Bow Lake*  
 LUXURY HOMES



VRBO: 892112

VRBO: 1183177



[www.exploringbrokenbowlake.com](http://www.exploringbrokenbowlake.com)

**Christ Centered**  
*Student Focused*



**CBA**  
 CORN BIBLE  
 ACADEMY

**7-12th Grade**  
**Small Class Sizes**

**Apply Today!**  
[cornbible.org](http://cornbible.org)

**580.343.2262**



PREMIUM DAIRY PRODUCTS  
**MADE <sup>IN</sup> OKLAHOMA**  
SINCE 1923

**CHEESE CURDS**

**PREMIUM CHEESE BLOCKS**

**FRESH WHOLE MILK**

**VARIETY GIFT BASKETS**



**ORDER ONLINE**

**SWANDAIRY.COM 918.341.2298**

**STOP BY OUR ON-FARM STORE**

**938 E. 5<sup>TH</sup> STREET, CLAREMORE, OK 74017**



*A truly  
Unforgettable  
dining experience*

A fine local steak dinner in a unique atmosphere. Molly's landing has established a reputation in the Tulsa community over the last 30 years not only as the best place to enjoy a perfectly good, wet aged steak but also a dining destination for a premium shrimp and seafood.

*Molly's Landing*  
**Steaks & Seafood**

3700 N. Highway 66, Catoosa, OK • 918.266.7853 • [mollyslanding.com](http://mollyslanding.com)





For those looking for a fine local steak dinner in a unique atmosphere, Molly's Landing is just the place. The unique atmosphere and décor of Molly's Landing never allow for a dull moment or for the conversation to wane. The restaurant is adorned from ceiling to floor with antique oddities, eccentric lighting fixtures, noticeable statues, and beautifully hand painted tables.

The electric furnishings include many animal mounts such as deer, caribou, moose and fish along with the artwork by co-owner Linda Powell. In addition to the animal mounts, some of the décor is from customers who have contributed their hunting treasures to the restaurant's collection.

A unique addition to the restaurant is at their entry – a portion of the Verdigris River Bridge, dismantled to make way for a new bridge, has been preserved. Two sections of the 1936 bridge that once carried westbound Route 66 now comprise the main entrance to the restaurant. The biggest bridge section can be easily

seen from nearby Oklahoma Highway 66, especially from the westbound direction.

It's not just the setting – a rustic log cabin on historic Route 66 that opening in 1984, situated under a canopy of trees on the banks of the Verdigris River – that makes Molly's special. A full assortment of steaks, game and seafood awaits diners here. Pair your entrée with a selection from the impressive wine list or enjoy a cocktail from their full service bar.

The most popular meal is the 1872 Rib eye, which is a 14-ounce rib eye steak with 13 seasonings. Other favorites include the Smoked Salmon and sautéed mushrooms.

Other entrées range from quail, grilled pork chops, grilled chicken breast to a peppered New York Strip with brandy sauce. Seafood dishes include deep fried shrimp, blackened tilapia filet and North Australian lobster tail – grilled Rosa Rita style. Although Molly's Landing is renowned for their steaks, they also offer a vegetarian dish, Shish Kabobs, Walleye and many other selections. Menu prices range from \$14 to \$40.

# Molly's Landing



# Clinton

The community began in 1899 when two men, J.L. Avant and E.E. Blake, decided to locate a town in the Washita River Valley.

Clinton was served by the Frisco Railroad. It was also the eastern terminus of the Clinton, Oklahoma, and Western Railroad Company, which lay track westward to Hemphill County, Texas. Once in Hemphill County, a second similarly-named railroad, the Clinton-Oklahoma-Western Railroad Company of Texas, joined with Pampa in Gray County, Texas. Both of these companies were soon leased and purchased by the Panhandle and Santa Fe Railway, which held them until disestablishment in 1965.

Positioned in a large valley surrounded by scenic rolling hills and wide-open spaces, Clinton, Oklahoma is a small community — about 10,000 residents — with access to larger metro areas. For outdoor enthusiasts, hiking and fishing at nearby Foss Lake are popular activities. Many visitors are drawn to our area attractions, such as the Oklahoma Route 66 Museum, the Cheyenne Cultural Center. Nearby Oklahoma City also offers live performances, professional sports and varied entertainment options.

With its abundant opportunities for work and play, friendly people, low cost of living, and laid-back lifestyle, Clinton is always a great place to be.





FRISCO CENTER

**FRISCO**  
*Conference Center*

**101 S. 4<sup>th</sup> St.  
I-40 & Hwy. 183  
Clinton, OK**

**580.323.7874**  
[www.frisco-center.com](http://www.frisco-center.com)

**Just west of OKC on I-40 and Hwy 183**

**STYLE MEETS FUNCTION**

**Multi-Purpose Event Center  
Complimentary Wireless Internet  
Complete AV System  
Certified Meeting Professional on Staff  
Business Center  
Tourist Information Center**



# **PUTT PUTT** **Golf**

**"Get your putts on Rt.66!"**

**OPEN**

**Thurs. 5p.m.-9p.m.**

**Fri. 5p.m. - 10p.m.**

**Sat. 2p.m. - 10p.m.**

**Sun. 1p.m.- 6p.m.**

**Available for  
Private Parties**

**10th & Jaycee Lane • Clinton, OK**

**Call The Clinton Chamber of Commerce  
for Reservations at (580) 323-2222**

The Clinton Chamber of Commerce now manages the Route 66 miniature golf course for the City of Clinton.

In the spring of last year, Clinton, received a grant and decided to upgrade the corner of Clinton where the Route 66 miniature golf course is located.

The golf course needed to be updated and more Route 66 details needed to be added which defined the famous highway.

Almost every hole was redone and on every hole marker, a different feature is provided on some of the famous Route 66 locations.

Each feature provides information on where it is located, what it is and the

history behind it.

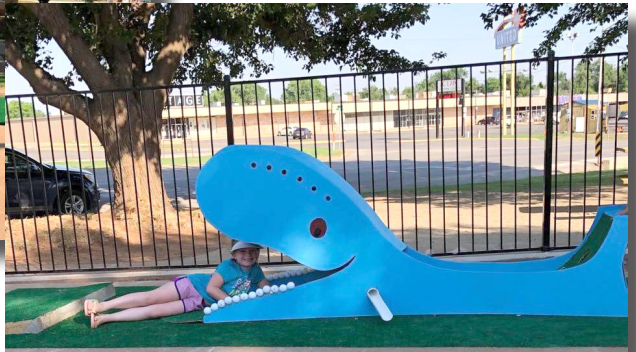
Along with promoting the different features of Route 66, this full 18-hole golf course highlights a two-sided, 12-foot totem pole, made by a local Clinton man.

Each individual, no matter the age is charged \$2 upon entry. The miniature golf course also accepts private parties. The parties will be accepted at any capacity and is charged \$50 for two hours of golf.

The golf course is open year round for parties and closes once a year from May 1, through the first week of September.

The updated Route 66 golf course has changed a corner of Clinton and has beautified its largest park.

# Clinton Putt Putt

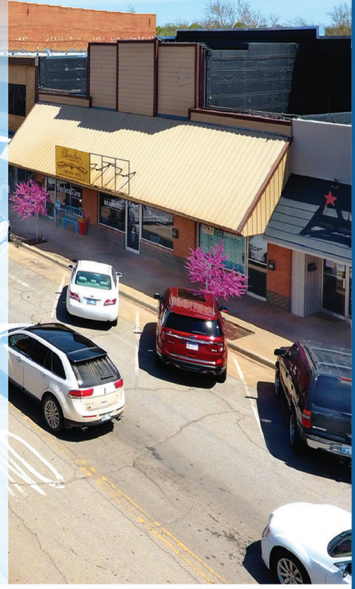
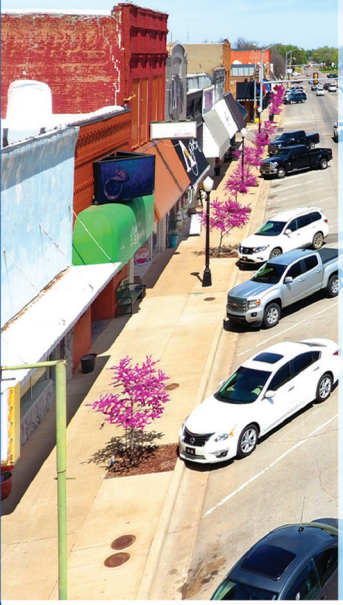




# Visit

# Elk City

Entertainment | Nightlife | Shopping  
 Parks and Lake  
 Cafes | Restaurants | Diners  
 Education | Art  
 National Route 66 & Transportation Museum  
 Farm & Ranch Museum  
 Old Town Museum  
 Blacksmith Museum  
 And More...



## VisitElkCity.com



380.225.0906



Download our App Now. Don't Miss Out!





Elk City has always been a shining example of “Western Hospitality.” It comes natural when you come from a proud, pioneering history combine with a quality of life that makes Elk City an ideal place to live and work. You’ll find what you are looking for in Elk City’s quiet residential neighborhoods, complete shopping facilities and recreational facilities that provide children and adults a large variety of sporting activities, competent professionals in every area and an outstanding regional medical center.

Elk City also provides its citizens with opportunities for growth and expression in the form of a top quality public library, a community civic center, a local theatre group, college and vo-tech classes 15 minutes away, and a large number of churches of various denominations.

Elk City’s geographic location has been responsible for a colorful and historic past. Major highways now meet where once a number of important routes passed, the

most famous of which is the “Great Western or Dodge City Cattle Trail.”

In 1903, Charles Gould ended his first geological survey of the Anadarko Basin. More than any other industry, oil and gas have shaped and reshaped Elk City’s history.

Because of their location along the historic “Route 66” millions of people have passed through Elk City heading from one coast to another. Later, as “Route 66” was replaced by Interstate 40, Elk City has diversified its economy beyond oil, gas and other agriculture to include a computer assembly plant, a meat packaging distribution center and the most sophisticated medical center in Western Oklahoma.

Elk City is bursting with things to see and do: National “Route 66 Museum,” Old Town Museum, Farm and Ranch Museum, Anadarko Basin Museum of Natural History and “The World’s Largest Non-Operating On-Site Drilling Rig,” seven Parks, sports facilities, Red Carpet Community Theater, Carnegie Library.

# Elk City





# LEONARDO'S

CHILDREN'S MUSEUM

**COME EXPLORE  
OUR NEWLY RENOVATED  
CHILDREN'S MUSEUM  
AND THE WORLD'S  
LARGEST  
COMMUNITY BUILT  
OUTDOOR PLAYGROUND!**



**Come Play!**

200 E. Maple Ave  
in Downtown Enid  
(580) 233-2787

Admission: \$9  
Under 2: Free

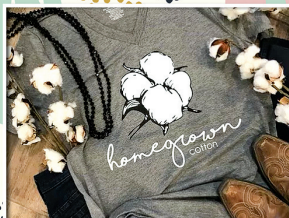
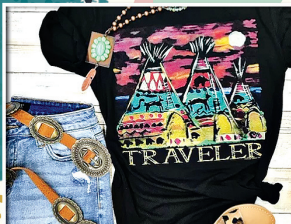
Hours:  
Tuesday-Saturday  
10AM - 5PM  
Sunday  
1PM - 5PM

Open Mondays during the summer.  
Adventure Quest is open year-round  
weather permitting.

plan your visit at [leonardos.org](http://leonardos.org)



## TRENDY PLUS SIZE CLOTHING



Inside The Mulberry Bush  
604 Frisco - Clinton  
580.243.7628  
[WWW.2TAILGATEGYPSIES.STORE](http://WWW.2TAILGATEGYPSIES.STORE)



# CASINO OKLAHOMA

NEW MEMBERS RECEIVE  
**\$15 IN FREE PLAY!**

---

RED  DIRT  
road house

*Serving some of the best food  
west of Oklahoma City!*

**140 AT EXIT 101**  
CasinoOklahoma.com

# Town of **HINTON**

Hinton offers a family experience like few other towns in Western Oklahoma.

Rated as one of Oklahoma's safest towns, parents take comfort in knowing that their children can live and play safely.

State of the art educational and sports facilities provide opportunities to every student wanting to experience an active schedule.

Home to the Red Rock Canyon State Park, Hinton Recreation and Nature Trail, a beautiful Splash Park, and the Hinton community fair, Hinton offers many opportunities for family fun and recreational activities.



Located 45 minutes west of Oklahoma City, it's just a short drive to a major metropolitan area which can be accessed either by I-40 or by taking a leisurely drive on Route 66, the Mother Road, which is located 4 miles North of downtown.

Hinton is one of the most progressive towns in Western Oklahoma with new businesses opening regularly, a new high school and many places of worship.

It's a great place to call home. So . . . come for a day . . . and decide to stay!



# VISIT THE ★★★★★ GENERAL TOMMY FRANKS LEADERSHIP INSTITUTE AND MUSEUM!

★ 9/11: Never Forget exhibit with interactives and a steel I-beam from the World Trade Center

★ Rare and unique military equipment, uniforms, artifacts and photographs

★ Educational and thought-provoking for the whole family

★ Event and meeting spaces available



Monday through Saturday  
10 a.m. to noon and 1 to 5 p.m.

507 S. Main Street  
Hobart, OK 73651  
(580) 726-5900

[TommyFranksMuseum.org](http://TommyFranksMuseum.org)

## The General Tommy Franks Leadership Institute and Museum

The General Tommy Franks Leadership Institute and Museum was created by General Tommy Franks and his wife, Cathryn Carley Franks, as a historical foundation dedicated to telling the story of the United States military and education.

The General Tommy Franks Leadership Institute and Museum invests in the nation's future leaders through several education and outreach programs including the Mobile Classroom + Road Show, the Inspired Leadership Challenge and the Four Star Leadership with General Tommy Franks program.

The world-class Museum is housed in a remodeled, 9,500-square-foot building in downtown Hobart, Oklahoma.

The facility includes a gift shop, gal-

leries with memorabilia and artifacts from General Frank's personal collections, a traveling exhibit area and meeting facilities.

Exhibitions are ordered chronologically, following General Tommy Franks life and career, while also showcasing the changes in the American military from WWII to the present, as told through the lives of soldiers.

See cultural items from around the world, unique military equipment, one-of-a-kind historical photographs, and videos and much more.

The Museum also houses one of only two Medal of Honor awards in the state of Oklahoma as well as one of the world's largest collections of Challenge Coins.

Plan your visit and learn how you can invest in our future leaders.

# Hydro

The town of Hydro is located just north of Route 66 on State highway 58. The town was founded on August 6th 1901 and was originally called Caddo. When the post office was established in September 1901, the name was changed to Hydro to honor the town's plentiful well water.

One of the events that the town of Hydro is known for is the Hydro Free Fair. It is the longest running Free fair in the State of Oklahoma. The fair is a 3 day event in the month of August that includes, rides, food, livestock shows, kid's tractor pull, parade, and much, much more. Family's from all over the state come to enjoy the Hydro Free Fair year after year.

Lucille's Service Station, a classic and historic

gas station along Route 66 near Hydro, is one of only two upper-story, out-thrust porch style stations left on Oklahoma's stretch of Route 66. Built in 1929 by Carl Dittmore, the service station was renamed in the 1930s. In 1941, the Hamons family took over the operation of the station and Lucille Hamons, for which the service station is named, ran the business for 60 years. Lucille, who quickly became known for her friendly assistance to motorists, earned the nickname "Mother of the Mother Road."

The town of Hydro continues to thrive with a busy main street that has a grocery store, hardware store, clothes store, bank, flower shop, restaurants, and many more businesses for your everyday needs.



# Lucilles

## The mother of the Mother Road

As you travel down Route

66, viewing the sights and sampling the culture that shaped an entire generation of Americans, you may notice some rather peculiar white buildings with wide tall front porches, indicative of the many service stations that used to sit alongside Route 66. One of the best known was Lucille's.

Started by Carl and Lucille Hammons, Lucille's (originally called The Hammons Courts) welcomes weary travelers to stay a night in their cabins or stop for a cold drink and a snack. Their business continued to be profitable throughout the Great Depression until the Dust Bowl struck the plains, during the early

1930's, and began the migration of people, once again, west to find jobs. During this period, Lucille started serving meals to hungry travelers, many of which were on their last dime, to earn extra money.

By the beginning of the 1950's, America began to experience growing pains created by the postwar economic boom, and a new highway (I-40) was planned. When the new highway was opened, business slowed to a trickle.

Lucille kept the station open, serving the local community, tourists and the occasional highway construction crew, telling stories about the glory days of Route 66 to anyone who was interested until she passed away in August 18, 2000.



Lucille's Service Station  
Route 66 Hydro, OK

The **Country Connection News** 50¢

News from Hydro, Eakly, Binger, Oney, Lookeba, Sickles, Fort Cobb, Fort Cobb Lake, Fort Cobb-Broxtton, Gracemont, in between.

Hometown news for communities and schools.

Nobody does  
**Hometown News**  
like  
**Hometown Folks**

405-797-3648 • countryconnectionnews@yahoo.com

Tuxedos that fit • Alterations  
Tuxedo Rental • Prom & Weddings



Owner: Susan Kimble



405-663-2681 • 133 W. Main Hydro, OK



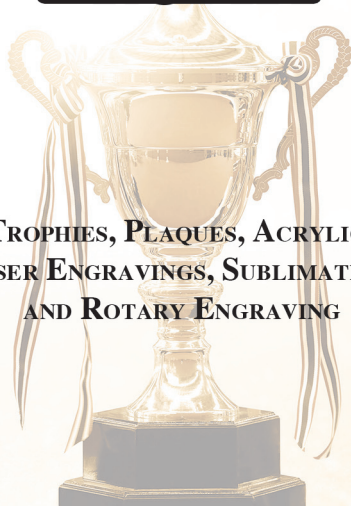
**Long & Associates, P.C.**

Certified Public Accountants  
Certified Financial Planner

- FULL SERVICE
- FINANCIAL PLANNING
- ACCOUNTING
- TAX PREPARATOIN

[www.Long-CPA.com](http://www.Long-CPA.com)  
405-663-2918 • 107 E Main, Hydro

**SOUTHWEST  
TROPHY**



TROPHIES, PLAQUES, ACRYLICS  
LASER ENGRAVINGS, SUBLIMATION,  
AND ROTARY ENGRAVING

405-542-7106  
SERVING ALL OF WESTERN OKLAHOMA



# Bank of Hydro

ESTABLISHED 1903

## HYDRO

146 West Main Street  
(405)-663-2214

## WEATHERFORD

406 North Washington St  
(580)-774-1300

## EAKLY

414 West Main Street  
(405)-797-3686

MEMBER FDIC



We can show anything on  
**realtor.com**

## CENTRAL WEST



## REAL ESTATE

## OFFICE

405.663.2255

Box 5, Hydro, OK

**We would love to assist with your real estate needs along Route 66 and I-40, from the OKC Metro through Western Oklahoma.**



**Beverly House**  
Sales Associate  
405.542.7535

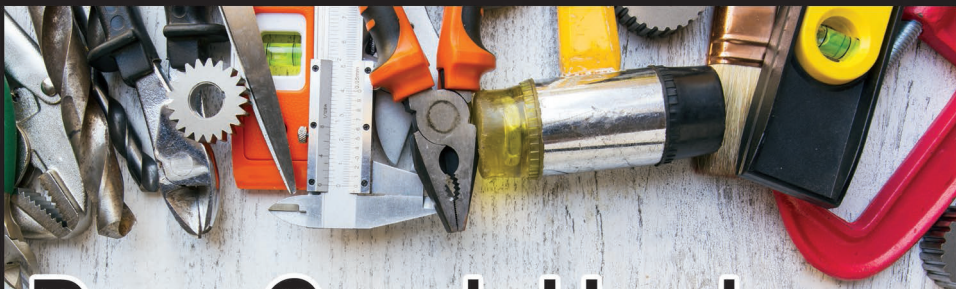


**Jared Black**  
Sales Associate  
405.824.9027



**Danny Black**  
Broker/ Owner  
405.268.7000

**CALL OR TEXT FOR HELP**  
[www.centralwestok.com](http://www.centralwestok.com)



# Deer Creek Hardware

## *True Value*

"Behind every project is a True Value"

Monday - Saturday 8:00am - 6:00pm

115 W. Main • Hydro, OK • 405-663-2133

# Deer Creek Market



**FRESH BEEF OR PORK  
& FARM RAISED CHICKEN!**

**CALL & ORDER AHEAD,  
AND HAVE IT DELIVERED!**

**Full line of groceries  
and fresh produce**

405-663-2354 • 109 W. MAIN, HYDRO



**HUNT  
BROTHERS  
PIZZA**



**NOW LOCATED INSIDE DEER CREEK MARKET!!**

# FREE Peanuts!



Stop By & Try Our  
**World Famous Nuts**  
for **FREE!**

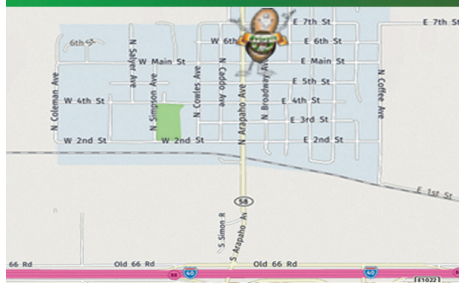
Just One Taste &  
You'll Know Why  
People Come From  
All Over The World  
For **Nutopia.**

**Peanuts • Pecans • Cashews • Candy • Hunter's Mix**



**Gift Bags Make A Great Gift!**

**Huge Selection of Nuts**



**New Address!**  
**Nutopia Nuts & More**  
109 W. Main St • Hydro, OK 73048  
**405-663-2330**  
**877-1GONUTS**

# LAWTON COMMUNITY THEATRE

Promoting live theatre in Southwest Oklahoma since 1952.

1316 NW Bell Ave. Lawton, Oklahoma

580-355-1600

[www.LCTOK.com](http://www.LCTOK.com)

“Oklahoma’s Longest Continually Running Theatre!”

## The Debt Clinic

Let us help  
you get out of  
**DEBT!**

Credit cards, loans,  
& other bills  
**PILING UP?**



**Call us  
NOW!**



Our Debt Program is designed to meet your specific needs:

- Free Consultations (call for appointment)
- Not a Bankruptcy
- Not a loan or mortgage
- No Credit Check
- Consolidate your bills into one monthly or bimonthly payment
- Save hundreds or even thousands of dollars in interest costs
- Help with IRS, garnishments & judgements
- Will not harm your credit rating



580.353.5700 • 866.452.7455  
[debtdoctor@lasillservices.com](mailto:debtdoctor@lasillservices.com)

[www.lasillservices.com](http://www.lasillservices.com)  
1529 W. Gore, #D-2, Lawton, OK 73501-3646

**PLAY ON!** Hilarious story of a community theatre group trying desperately to put on a play in spite of maddening interference from a haughty author who keeps revising the script. Act I is a rehearsal of the dreadful show, Act II is the near disastrous dress rehearsal, and the final act is the actual performance, in which anything that can go wrong, does. The audience is treated to a madcap climax and a thoroughly hilarious romp.

Opens: November 8, 2019  
Directed by: Carolyn Kuether

## THE CURIOUS INCIDENT OF THE DOG IN THE NIGHT-TIME

15-year-old Christopher has an extraordinary brain: He's never ventured alone beyond the end of his road. 7 minutes after midnight, and Christopher stands beside his neighbor's dead dog, Wellington, who has been speared with a garden fork. Finding himself under suspicion, he is determined to solve the mystery of who murdered Wellington, and carefully records each fact of the crime. His detective work, forbidden by his father, takes him on a thrilling journey that upturns his world.

Auditions: January 13-14, 2020  
Opens: February 28, 2020  
Directed by: Richard Scott Klein

**WAIT UNTIL DARK** Notting Hill Gate, London. A sinister con man and two ex-convicts are about to meet their match. They have traced the location of a mysterious doll to the home of Sam Henderson and his blind wife, Susy and set about trying to retrieve it. They start an elaborate scam to persuade Susy to hand it over, but Susy, it seems, is no easy target.

Auditions: March 9-10, 2020  
Opens: April 24, 2020  
Directed by: Albert Rivas

**MATILDA!** Packed with high-energy dance numbers, catchy songs and an unforgettable star turn for a young actress, Matilda is a joyous girl power romp. Children and adults alike will be thrilled and delighted by the story of the special little girl with an extraordinary imagination.

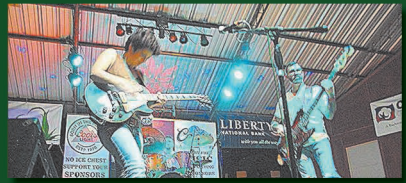
Auditions: April 13-14, 2020  
Opens: June 19, 2020  
Directed by: Teresa Abram

# Medicine Park

EST. 1908



[www.medicinepark.com](http://www.medicinepark.com)



- Lodging
- Fishing
- Hiking
- Biking
- Swimming
- Shopping
- Wildlife Refuge
- Dining
- Art
- Music

- see website for event schedule

- Aquarium

- open every day, 10 a.m. to 5 p.m.

[www.medicinepark.com](http://www.medicinepark.com)

**M**edicine Park is located at the main entry to the Wichita Mountains Wildlife Refuge, the number one visited wildlife refuge in the country - hosting more than 1.5 million annual visitors.

The community has a rich and colorful history. Originally founded on July 4th, 1908 by Oklahoma Senator Elmer Thomas, Medicine Park was Oklahoma's first planned tourism resort.

The pages of the Town's colorful history are filled with the likes of Will Rogers, Wiley Post, Frank Phillips, Bob Wills, Al Capone, Bonnie and Clyde, Pretty Boy Floyd, Lil Hardin, Colonel Jack Abernathy, Les Brown, Roy Rogers and Dale Evans, and countless others.

"Today, Medicine Park is again thriving with options for lodging, dining, shopping, wildlife viewing and outdoor activities. Medicine Creek flows right through town, and visitors can swim and float in Bath Lake, just like they did in the roaring '20s. Anglers gather on the banks to fish for rainbow trout that are stocked every two weeks

from November through March.

Some adventurers choose kayaks or paddle boards to navigate the creek or nearby lakes. Others challenge themselves on the many hiking, running and mountain bike trails that start right in town.

With the Wichita Mountains, Mount Scott, Lake Lawtonka and Fort Sill all bordering the town, Medicine Park is the adventure hub of the region.

Music and art festivals bring thousands to town, and the new Aquarium and Natural Sciences Center opened in 2018 with great reviews.

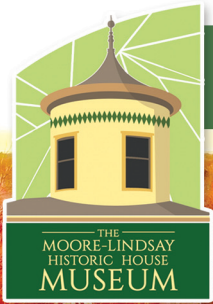
Medicine Park has also become a popular venue for meetings, weddings, receptions and family reunions. Travelers can check the town's website

([Medicinepark.com](http://Medicinepark.com)) for details on lodging, dining, shopping, activities and festivals.

The cobblestone community of Medicine Park remains a historic national treasure. The resort's revival offers visitors everything from a relaxing evening along the water, to an extreme adventure in the mountains."

# Medicine Park





Take a walk through the past and learn about early Norman as you tour this lovely 1899 Victorian home.

**The Moore-Lindsay House is open to the public Tuesday-Saturday, 11am-noon and 1pm-4pm.**

**Guided tours are offered at 11am, 1pm, and 3pm.**

**Self-guided tours are available any time during operating hours.**

405-321-0156 • 508 N. Peters Ave., Norman, OK 73069 • [mlhhmuseum@gmail.com](mailto:mlhhmuseum@gmail.com)  
[www.normanmuseum.org](http://www.normanmuseum.org) • [facebook.com/moorelindsayhouse](https://facebook.com/moorelindsayhouse) • [instagram.com/moorelindsayhouse](https://instagram.com/moorelindsayhouse)



## **Murrow Indian Children's Home**



The vision of Murrow is to nurture socially, spiritually and culturally successful children.

**With your support, you're impacting a life forever. The Native youth of Oklahoma Help them reach their dreams, may it be a firefighter or the future world leader; they need your help.**

Monday – Friday: 8:00AM – 5:00PM  
2540 Murrow Cir, Muskogee, OK 74403

918) 682-2586  
[murrowhomedirector@gmail.com](mailto:murrowhomedirector@gmail.com)

# DONNA J. JACKSON & ASSOCIATES, PLLC



**Estate Planning, Probate  
and Elder Law**

---

**10404 Vineyard Blvd, Suite E  
Oklahoma City, OK 73120  
(405) 840-1874**

**[www.OKCEstateLawyer.com](http://www.OKCEstateLawyer.com)  
[donnajacksonlaw@outlook.com](mailto:donnajacksonlaw@outlook.com)**



**YOUR ADVENTURE STARTS HERE®**



**405.218.5200  
820 BASS PRO DRIVE, OKC, OK 73104**



**Being Okie ain't easy..**  
*but it's alright*

Inspired by early Oklahomans, at Bedlam we have created a place that honors Okie history, culture and backbone. Bedlam is Okie Grub, Great Music, Cold Beer & Oklahoma Grit. Celebrate the best of Bedlam!



**610 NE 50th St, OKC, OK**  
**(405) 528-7427 • [bedlambarbq.com](http://bedlambarbq.com)**

## OKLAHOMA'S HIGHEST HONOR

  
**OKLAHOMA HALL of FAME**  
GAYLORD-PICKENS MUSEUM



**CLASS OF 2019**  
James Day, *Pond Creek*  
Tricia Everest, *Oklahoma City*  
Gray Frederickson, *Oklahoma City*  
John Herrington, *Wetumka*  
Steve Largent, *Tulsa*  
John Nickel, *Muskogee*  
J.C. Watts, Jr., *Eufaula*

**POSTHUMOUS INDUCTION**  
Chief Allen Wright/*Kiliahote*  
*Mississippi/Boggy Depot, Choctaw Nation*

**92<sup>nd</sup> OKLAHOMA HALL of FAME  
BANQUET & INDUCTION CEREMONY**

Thursday, November 21, 2019 | Cox Convention Center – Oklahoma City

The Oklahoma Hall of Fame believes there are no limits to what is possible.  
Every day we celebrate the legacy of inspiring Oklahomans with all generations because  
Oklahomans are changing the world!

Official Museum of  
**FREE FAMILY FUN**



@OklahomaHoF

1400 Classen Drive | Oklahoma City, OK 73106  
405.235.4458 | [oklahomahof.com](http://oklahomahof.com)



STREBEL CREEK  
VINEYARD



1st Winery  
in OKC!

OPEN:

FRIDAY 1P-5P

SATURDAY 10A-5P

SUNDAY 2P-5P

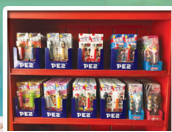
We sell  
**RED, WHITE, SWEET, & DRY WINE**

405.720.7779 • StrebelCreek.com  
11521 N. MacArthur Blvd., OKC, OK 73162

• Most of our wine is made from Oklahoma grapes •



We have fresh fudge,  
Route 66 pop,  
nostalgic candy  
and more!!



gigipopcorn.com • 918-938-5493 • 12 E. Dewey, Sapulpa Ok 74066  
Located on Rt 66 right across the street from the Crossroads of America sign!

# Tulsa Port of Catoosa

The Tulsa Port of Catoosa is one of the largest, most inland river ports in the 25,000 miles of U.S. inland river system. It serves as head of navigation for the McClellan-Kerr Arkansas River Navigation System which runs 445 river miles from Northeast Oklahoma to the Mississippi River.

The Tulsa Port is also a 2500-acre industrial park that opened for operation late in 1970. Whether it's agricultural commodities, steel, petroleum products, machinery, or finished-goods, it can be shipped in and out of the Tulsa Port of Catoosa using a combination of truck, rail and barge.

Shipping capabilities along with the manufacturing operations and manufacturing support facilities located in the industrial park makes the Tulsa Port of Catoosa a unique and invaluable asset to Oklahoma and the surrounding states.





**TULSA PORT  
OF CATOOSA**

**Visit us today!**  
**918-266-2291**  
**info@tulsaport.com**  
**5350 Cimarron Rd**  
**Catoosa, OK 74015**



**You have to see it to believe it!**

**Over 40 Years in the Making**

Shipping capabilities along with the manufacturing operations and manufacturing support facilities located in the industrial park makes the Tulsa Port of Catoosa a unique and invaluable asset to Oklahoma and the surrounding states.



**Bill Long's**

# **OKLAHOMA BACKROADS**



**Guided Motorcycle Tours  
to Oklahoma's Unique Spots**

**EXPERIENCE** back to the land.

**Oklahoma Agritourism Winery tours, micro  
breweries, farmer's markets, crop mazes, ect.**

**Please Call for Rate**

**405-996-0411**

**OKMotorcycleTours.com**

**DISCOVER** the out-of-the-way  
barbeque spots & catfish diners  
that only the locals know about.

**Get a TASTE of the Old West  
visiting working ranches, frontier  
forts and territorial outposts.**

**TRY SOMETHING A  
LITTLE OUT OF THE  
ORDINARY FOR THAT  
NEXT GETAWAY**

**405-996-0411**

**Day trips & Overnight Trips  
OK, TX, AR, CO, NM, MO**

814 W Sheridan Ave, Suite A  
OKC, OK 73106

# FlashBack RETROPUB



OKC's Original Arcade Bar

814 W Sheridan Ave, Suite F  
OKC, OK 73106

# THE SANCTUARY BARSILICA



It's Not Just A Bar, It's An Experience

# Get Your Kicks on “Root” 66

One of the most popular road songs ever written “Get Your Kicks on Route 66” was written by jazz musician Bobby Troup in 1946 while he was driving west to Los Angeles. Troup credited his former wife Cynthia for coming up with most of the lyrics.

The song can be attributed to much of the popularity for the internationally famous Route 66.

## Lyrics to “Get Your Kicks on Route 66”

If you ever plan to motor west  
Travel my way, that’s the highway that’s the best  
Get your kicks on Route 66.  
It winds from Chicago to L.A.  
More than 2,000 miles all the way  
Get your kicks on Route 66  
Now you go through St. Looey, Joplin, Missouri  
And Oklahoma City is mighty pretty.  
You’ll see Amarillo, Gallup, New Mexico,  
Flagstaff, Arizona, don’t forget Winona,  
Kingman, Barstow, San Bernardino.  
Won’t you get hip to this timely tip:  
When you make that California trip  
Get your kicks on Route 66.  
Get your kicks on Route 66.  
—Bobby Troup

Nat King Cole, made it into a hit record and also established the pronunciation as “root” rather than “rout,” as repeated in later renditions by acts such as the Rolling Stones.





**580-223-9339**

**Lake Murray Marina  
77S & Boat Dock Drive  
Ardmore, OK 73401**



## **In Season Hours** (Memorial Day-Labor Day)

**Mon-Fri**

**Sat-Sun**

**8am – 8pm**

**8:30am – 7:30pm**

## **Off Season Hours**

**Mon-Fri**

**Sat-Sun**

**9am – 5pm**

**9:30am – 4:30pm**

### **Pontoon Boat**

4 hours – \$179.00

8 hours – \$309.00

11 hours – \$369.00

### **Double Decker**

#### **Pontoon Boat**

4 hours – \$259.00

8 hours – \$399.00

11 hours – \$469.00

### **Lily Pad**

4 hours – \$47.00

8 hours – \$79.00

### **Water Bike**

1 hour – \$17.00

### **Paddle Board**

1 hour – \$20.00

### **1-Person Kayak**

1 hour – \$15.00

### **2-Person Kayak**

1 hour – \$20.00





# The Hubbly Bubbly

HOOKAH & CAFE



Oklahoma's Destination to Experience  
Art & Music Culture.

**Live Shows Every Weeknight!**

@HubblyBubblyOKC

405-609-2930 • 2900 North Classen Blvd, Oklahoma City



# Hubbly Bubbly

In a state known for cowboy boots and steak, who would have thought you could be transported to the Middle East? That's the goal of The Hubbly Bubbly Hookah Lounge & Cafe: providing a getaway to the Middle East during your trip to Oklahoma. The owner, Sammy Khader, was inspired by his summer adventures in Amman, Jordan. Every night surrounded by family, Sammy would drink fresh tea and mint, munch on baklava,

and most watch his father smoke hookah. The hookah was shared amongst family and friends, and hours of joy, laughter, and storytelling would begin. Those meaningful moments are now experiences Sammy hopes to share with every Oklahoman, and every person who visits the Great State of Oklahoma. Visit the Hubbly Bubbly Hookah Lounge & Cafe, located at 2900 North Classen Blvd, Oklahoma City, OK 73106.



*Jimmy Bishop's*  
**TEXOMA STRIPER**.COM  
STRIPER GUIDE SERVICE

For more information on  
reservations, call today!  
**580-564-6195**

**GET**  
**HOOKED**  
on Fishing

Striper Fishing on  
Lake Texoma!

**Providing Professional  
Guide Service year round  
on beautiful Lake Texoma!**

Come enjoy an exciting striped fishing  
experience on Lake Texoma

**Fun for the family, large groups  
or corporate events**

**Great fun  
for everyone!**



**LAKE TEXOMA**  
12745 Kaney Rd, Kingston, OK 73439

**OR EMAIL AT**  
Jimmy@texomastripers.com

# Route 66 Festivals

## Clinton Route 66 Festival – Clinton

Known as the hub of western Oklahoma and home to the Oklahoma Route 66 Museum, the city of Clinton is a time-honored stop along Route 66. If your journey takes you through on the fourth Saturday in May, the Clinton Route 66 Festival is a must-see. This two-day event boasts a burnout contest, stereo competition and battle of the bands on Friday night, while Saturday is packed to the brim with a car and motorcycle show, weiner dog race, hot dog eating contest, poker run and free concert.

## Bethany 66 Festival – Bethany

Make a point to visit downtown Bethany on Memorial Day weekend to celebrate at one of the city's biggest events. This charming city welcomes visitors with murals of historic Route 66 throughout the downtown area, which adds to the festive feel of the Bethany 66 Festival. This family friendly event kicks off with a car cruise and bluegrass concert on Friday, while Saturday is packed with a car show, arts and crafts booths, live music and a children's parade.

## El Reno Small Town Weekend – El Reno

Celebrate the legacy of El Reno and Route 66 with a trip to the El Reno Small Town Weekend celebration in June. Packed with fun events for the entire family, this two-day festival features a car show, a pre-1988 car cruise along a closed section of Route 66 and even Hot Wheels races for the kids in nearby Adam's Park. On Sunday, guests are invited to a homemade cinnamon roll breakfast, a gospel sing and chuckwagon lunch followed by a poker run and the only legal drag race and burnout on Route 66.

## Totem Pole BBQ & Music Fest – Chelsea

Fun roadside attractions, like Totem Pole Park, are just one of the things that make Route 66 unique. This northeast Oklahoma attraction is home to the world's largest concrete totem pole, as well as the Totem Pole BBQ & Music Fest, held annually the first Saturday in October. Round up the whole gang to explore the on-site, 11-sided fiddle house while tapping your toes to live entertainment. Plenty of great barbecue, craft vendors and children's activities will ensure that there's something for everyone to enjoy.

## Stroud's Historic Route 66 Wine & Food Festival – Stroud

Situated along the stretch of Route 66 that lies between Oklahoma City and Tulsa you'll find the city of Stroud, known as the wine and grape capital of Oklahoma. Follow the Mother Road right into Stroud's downtown area where Stroud's Historic Route 66 Wine & Food Festival is held during the second Saturday in June. The 21-and-over crowd can enjoy samples from over 10 Oklahoma wineries, while all ages will enjoy gourmet food, a car and motorcycle show, vendor booths and live music.

## Heartland Cruise Car Show – Weatherford

Along the plains of western Oklahoma, Route 66 winds into the city of Weatherford. For over two decades, Weatherford has hosted the Heartland Cruise Car Show, which brings out over 250 classic cars for two days in mid-June. Park your ride and browse rows of cars in Rader Park while enjoying some delicious fair food. The park will also be filled with vendors and games, as well as arts and craft booths to keep you entertained all day long.

# Route 66 Festivals

# Oklahoma Festivals 2019-2020

Oct. 30 – Nov. 4, 2019  
Will Rogers Days,  
Claremore & Oologah

Nov. 8-9, 2019  
Rodeo Fall of Fame  
Weekend, OKC

Nov. 16, 2019  
Luther Pecan Festival,  
Luther

Nov. 23-24, 2019  
Rt 66 Marathon, Tulsa

Dec. 8, 2019  
Fort Reno Christmas Guns,  
El Reno

Feb. 1, 2020 56th Annual  
German Feast and Auction,  
Corn

Feb. 14-15, 2020 Rockin' Billy  
Bash, Tulsa

April 4-5, 2020 Redbud  
Classic, OKC

May 1-2, 2020 El Reno  
Burger Day, El Reno

May 2, 2020 Warr Acres Rt  
66 Festival Car Show Trains  
and Slot Cars Display, Warr  
Acres

May 31, 2020 Ironman Tulsa,  
Tulsa

Nov. 21-22, 2020 Rt 66  
Marathon, Tulsa

**TBD 2020**  
Route 66 Nights  
Food trucks, music & more,  
Weatherford

June-Heartland Cruise and  
Car Show, Weatherford

Sep.-Cruise-in for a cause,  
Yukon

Sep.-Oklahoma State Fair,  
OKC

Sep.-Pinewood Derby &  
Classic Car Show, Tulsa

Sep.-Tulsa Greek Festival,  
Tulsa

Sep.-Seabastation  
Motorcycle Swap Meet,  
Warwick

Sep.-National Cavalry  
Competition, El Reno

Sep.-Rt 66 Cruisers Cruise  
Night and Car Show,  
Claremore

Sep.-Wings Over  
Weatherford, Weatherford

Oct.-Ed Fest, Edmond

Oct.-Czech Festival, Yukon

Oct.-Rt 66 Flywheelers,  
Catoosa

Oct.-Historic Spirit Tours,  
El Reno

Oct.-Rt 66 Punkin Chunkin  
Festival, Vinita

Oct.-Tulsa Run, Tulsa

Oct.-Pecan and Fun  
Festival,  
Claremore

# Hunting Seasons 2019-2020

**\*\*\*Deer Holiday Antlerless:**  
Dec. 20-29, 2019

**Bear Muzzleloader:**  
Oct. 26 – Nov. 3, 2019

**\*\*\*Youth Deer Gun:**  
Oct. 18-20, 2019

**Turkey Fall Archery:**  
Oct. 1, 2019 – Jan.15, 2020

**Deer Archery:**  
Oct. 1, 2019 – Jan. 15, 2020

**Turkey Fall Gun:**  
Nov. 2 – Nov. 22, 2019

**Deer Muzzleloader:**  
Oct. 26 – Nov. 3, 2019

**Youth Spring Turkey:**  
April 4-5, 2020

**Deer Gun:**  
Nov. 23 – Dec. 8, 2019

**Youth Spring Turkey (SE):**  
April18-19, 2020

**\*\*\*Elk Holiday Antlerless:**  
Dec. 20-29, 2019

**Spring Turkey:**  
April 6 – May 6, 2020

**\*\*\*Youth Elk Gun:**  
Oct. 18-20, 2019

**Spring Turkey (SE):**  
April 20 – May 6, 2020

**Elk Archery:**  
Oct. 1, 2019 – Jan. 15, 2020

**Quail:**  
Nov. 9, 2019 – Feb. 15, 2020

**Elk Muzzleloader:**  
Oct. 26 – Nov. 3, 2019

**Pheasant:**  
Dec. 1, 2019 – Jan.31, 2020

**Elk Gun:**  
Nov.23 – Dec. 8, 2019

**Crow:**  
Oct. 10 – Nov. 16, 2019;  
Dec. 9, 2019 – March 4,  
2020

**\*\*\*Special Southwest  
Zone Elk Seasons:**  
Archery: Oct. 5-9, 2019;  
Dec. 7-11, 2019  
Gun: Oct. 10-13, 2019;  
Dec. 12-15, 2019  
Antlerless:  
Nov. 23 – Dec. 8, 2019;  
Jan.1 – 31, 2020

**Squirrel:**  
May 15, 2019 – Jan.31,  
2020

**Rabbit:**  
Oct. 1, 2019 – March 15,  
2020

**Antelope Archery:**  
Oct. 1-14, 2019

**Furbearers**  
Dec. 1, 2019 – Feb. 29, 2020

**Bear Archery:**  
Oct.1 – 20, 2019

**\*\*\*Subject to change**

# Alabaster Caverns

Freedom, OK

Enter one of the largest natural gypsum cave in the world at Alabaster Caverns State Park. This rare cave is open to the public, and the only gypsum show cave in the United States. Daily guided tours of Alabaster Cavern leave promptly on the hour from 9am-4pm. For safety reasons, a maximum of 40 visitors are allowed on each tour. A fee is charged for the tour.

The cavern tour includes guided interpretation on a well-lit path. Group tour rates are available for school and youth groups only and only after a reservation has been made and a confirmation number been issued. Group reservations are required at least two weeks in advance by calling the park office. NOTE: Tour reservations are recommended during holiday weekends and during local events.

Alabaster Caverns State Park also features 11 reservable RV sites and approximately 12 tent sites available on a first come, first serve basis. Enjoy hiking trails, picnic areas, group shelters with electricity, grills, water and a volleyball court.



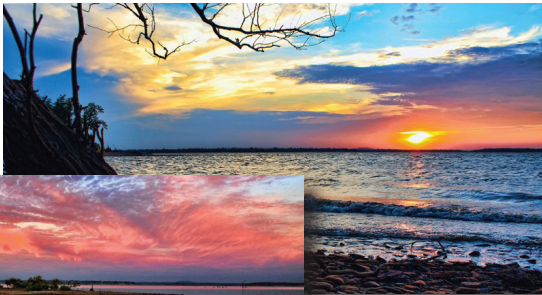
## Park Office Hours:

Sunday: 8:00 am - 5:00 pm  
Monday: 8:00 am - 5:00 pm  
Tuesday: 8:00 am - 5:00 pm  
Wednesday: 8:00 am - 5:00 pm  
Thursday: 8:00 am - 5:00 pm  
Friday: 8:00 am - 5:00 pm  
Saturday: 8:00 am - 5:00 pm

The Arrowhead Area at Lake Eufaula State Park features 2,200 scenic acres near Canadian in southeastern Oklahoma.

Lake Eufaula, the largest man-made lake in Oklahoma, borders most of the Arrowhead Area and is accessible by boat from a ramp located near the marina. Enjoy water sports of all kinds on the lake, from water skiing to wakeboarding. The park marina offers a restaurant, fuel, tackle, bait, indoor fishing and a nearby swimming area. Fishing is a popular activity at Lake Eufaula, and the catch of the day may include catfish, crappie and sand bass.

The on-site Arrowhead Stables offers 25 miles of equestrian trails, riding stables, horses for rent, a play area and petting zoo. Choose from two hiking trails at Arrowhead Area: the Outlaw Nature Trail, a three-quarter mile trail that runs through hilly terrain, and the Arrowhead Hiking Trail, a hilly three mile trail that is recommended for advanced hikers only. On the trails, visitors may get a close-up view of some of the animals that live in the park, such as deer, wild turkeys and rabbits.



Park Office Hours:  
Sunday: 9:00 am - 5:00 pm  
Monday: 8:30 am - 5:00 pm  
Tuesday: 8:30 am - 5:00 pm  
Wednesday: 8:30 am - 5:00 pm  
Thursday: 8:30 am - 5:00 pm  
Friday: 8:30 am - 5:00 pm  
Saturday: 9:00 am - 5:00 pm

# Arrowhead Area

Canadian, OK

# Beavers Bend

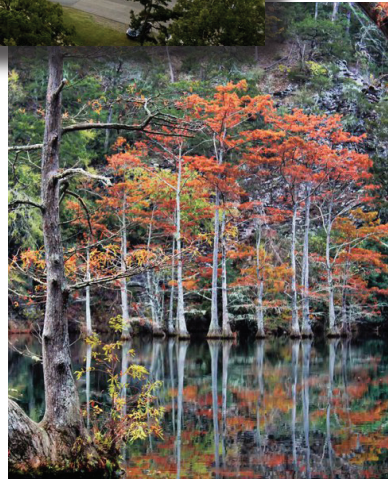
## Broken Bow, OK

Beavers Bend State Park is located in the mountainous region of southeast Oklahoma along the shores of Broken Bow Lake and the Mountain Fork River. Guests traveling down the winding roads through the forests of pine and hardwood trees will find adventure, beautiful scenery and plenty of activities inside this state park. The scenic beauty of Beavers Bend State Park makes it one of Oklahoma's most popular areas.

Towering timbers, crystal clear waters and rugged terrain make this state park an outdoor lover's paradise. Visitors to Beavers Bend State Park will enjoy hiking, biking, boating, fishing, water skiing, nature center activities, river float trips, canoeing, horseback riding and much more. Trout streams are stocked year-round and the park features two catch-and-release trophy areas. Escape into the serenity of nature and follow the Mountain Fork River as it flows from the base of Broken Bow Lake through the park below. This area provides visitors with spectacular views, as well as excellent canoeing and fishing opportunities.



**Park Office Hours:**  
Sunday: 8:00 am - 6:00 pm  
Monday: 8:00 am - 6:00 pm  
Tuesday: 8:00 am - 6:00 pm  
Wednesday: 8:00 am - 6:00 pm  
Thursday: 8:00 am - 6:00 pm  
Friday: 8:00 am - 8:00 pm  
Saturday: 8:00 am - 7:00 pm



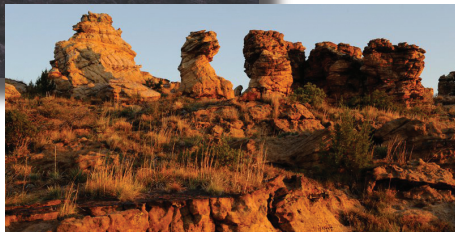
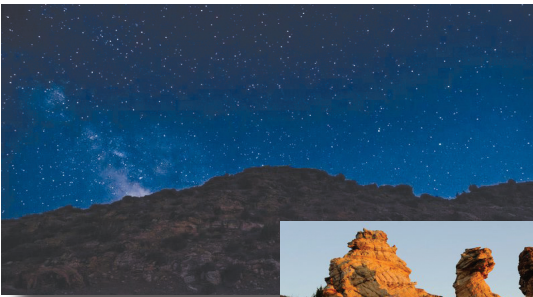


Black Mesa is located in Oklahoma's panhandle along the tri-state border with Colorado and New Mexico. Black Mesa takes its name from the layer of black lava rock that coated the mesa about 30 million years ago. Visitors can hike to the top of the plateau, Oklahoma's highest point at 4,973 feet above sea level, while in the Black Mesa Nature Preserve.

The nature preserve is operated by the Oklahoma Tourism & Recreation Department in conjunction with Black Mesa State Park. The nature preserve consists of approximately 1,600 acres where visitors can hike and enjoy 23 rare plants and eight rare animal species. The unique area marks the point where the Rocky Mountains meet the shortgrass prairie and many species are at the easternmost or westernmost point of their natural range.

Black Mesa State Park & Nature Preserve are a birder's paradise with golden eagles, scaled quail, black-billed magpies, and pinyon jays frequently spotted. Other wildlife in the area includes black bear, bobcat, mountain lion, mule deer, bighorn sheep and antelope.

In addition to being an excellent location for wildlife watching, Black Mesa State Park boasts some of the darkest nighttime skies on publicly accessible land in the country. The dark skies draw countless astronomy enthusiasts to the area every year as they make star gazing ideal. The state park is especially popular each August when the annual Perseid meteor shower is visible. It is one of the most viewed meteor showers in the Northern Hemisphere and is best seen from remote areas such as the Oklahoma panhandle.



# Black Mesa

Kenton, OK

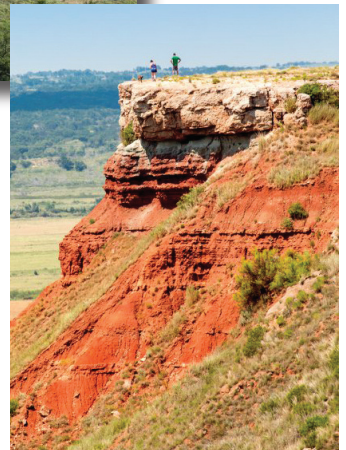
# The Gloss Mountians

## Fairview, OK

The Gloss Mountains, sometimes called the Glass Mountains, have a high Selenite content that mimics a shiny glass exterior. Though there are no lodging or campsites located in Gloss Mountains State Park, guests can enjoy the Cathedral Mountain hike from sunrise to sunset. The spectacular scenery makes this a truly unique Oklahoma state park.

Park facilities include a restroom, pavilions, picnic areas, grills, public water supply and a handicap-accessible trail. The mountain's popular trail runs from the parking lot to the top of Cathedral Mountain and across the mesa, offering a spectacular view of the valley floor and Lone Peak Mountain.

Miles of prairie floor stretch out as far as the eye can see, broken up only by the native red dirt and sparse green shrubbery. Buzzards and eagles loom overhead, while lizards and insects will become familiar friends along the rocky terrain. Bring a camera to capture the unique land geography, geological formations, Selenite gypsum, scenery and wildlife.



### Park Office Hours:

Sunday: 7:00 am - 9:00 pm  
Monday: 7:00 am - 9:00 pm  
Tuesday: 7:00 am - 9:00 pm  
Wednesday: 7:00 am - 9:00 pm  
Thursday: 7:00 am - 9:00 pm  
Friday: 7:00 am - 9:00 pm  
Saturday: 7:00 am - 9:00 pm

At Great Plains State Park, Oklahoma's diverse terrain is showcased while giving visitors a well-rounded vacation experience. Great Plains State Park is located in southwestern Oklahoma, south of Hobart. Nestled in the shadows of the Wichita Mountains, on the east shore of Tom Steed Lake, the park is extremely appealing for the variety of activities it has to offer.

The rough, rocky terrain of the Wichita Mountain foothills provides miles of mountain biking trails for experts and beginners alike. Hiking trails give visitors a chance to explore the park on foot and take in the scenery at a slower pace. Whether biking or on foot, visitors will have access to over 400 acres of park land. Rock climbing in granite boulder fields is also a favorite activity at Great Plains State Park.

History buffs will enjoy seeing the ruins of the 115-year-old mine that once operated in the area and has been abandoned ever since. The remnants of the 1904 Gold Bells Mill and Mine are located in the northeast area of Great Plains State Park. A small mining town called Wildman was built around the same time in the area, but has completely disappeared without a trace. (Caution: Rattlesnakes are known to inhabit the ruins of Gold Bells mine. Use caution while exploring the area.)



# Great Plains State Park

Mountain Park, OK

# Great Salt Plains

Jet, OK

Great Salt Plains State Park is one of Oklahoma's most unique state parks. The barren landscape of the nearby Salt Plains National Wildlife Refuge is comprised of salt leftover from an ocean that covered Oklahoma in prehistoric times, and the saltwater lake in the park, Great Salt Plains Lake, is about half as salty as the ocean.

The selenite crystal dig area is located southwest of the lake in the Salt Plains National Wildlife Refuge, and access roads are available six miles west of Jet or three miles south of Cherokee. The crystal digging area is open from April 1 to October 15 from sunrise to sunset. Located just under the surface of the salt plains, these crystals usually form into an hourglass shape. Oklahoma is the only place in the world where the hourglass-shaped selenite crystal can be found. While searching for crystals, look for some of the over 300 species of protected birds that live in and can be seen in the refuge.



#### Park Office Hours:

Sunday: 8:00 am - 4:00 pm  
Monday: 8:00 am - 4:00 pm  
Tuesday: 8:00 am - 4:00 pm  
Wednesday: 8:00 am - 4:00 pm  
Thursday: 8:00 am - 4:00 pm  
Friday: 8:00 am - 4:00 pm  
Saturday: 8:00 am - 4:00 pm

In the scenic, hilly woodlands of the Sans Bois Mountains of southeast Oklahoma, Robbers Cave State Park is a favorite of rappellers, equestrians, hikers and outdoor lovers. The park and adjoining wildlife management area offer acres of discovery and enjoyment including seasonal trout fishing and hunting, miles of hiking and equestrian trails, rugged cliffs for climbing and stunning fall foliage viewing.

Once a former hideout for outlaws Jesse James and Belle Starr, Robbers Cave State Park is an 8,246-acre park with 189 combined lake acres with Lake Carlton, Lake Wayne Wallace and Coon Creek. It is named for the famous outlaw cave hidden in the formation of 300 to 1,500-ft sandstone hills and cliffs.



**Park Office Hours:**

Sunday: 8:00 am - 6:00 pm  
Monday: 8:00 am - 6:00 pm  
Tuesday: 8:00 am - 6:00 pm  
Wednesday: 8:00 am - 6:00 pm  
Thursday: 8:00 am - 6:00 pm  
Friday: 8:00 am - 8:00 pm  
Saturday: 8:00 am - 8:00 pm

# Robbers Cave

Wilburton, OK

# Tenkiller State Park

Vian, OK

Tenkiller State Park is known as Oklahoma's "heaven in the hills." The sparkling blue waters of Lake Tenkiller offer water enthusiasts an abundance of recreational opportunities between 130 miles of shoreline and 13,000 surface acres. The park's plentiful amenities make it a favorite destination for all ages.

Lake Tenkiller is considered one of the best places in the state to go scuba diving, as its waters are clear from eight to 28 feet. Tenkiller Scuba Park is a diver's dream, with a sunken airplane fuselage, school bus, helicopter and two boats to explore underwater. In some areas of the lake, divers can see the remains of homesteads and artifacts left behind from before the lake was formed.

The lake's underwater terrain ranges from mildly sloping hills to rock cliffs, and the water goes up to 165 feet deep in places.



## Park Office Hours:

- Sunday: 8:30 am - 5:00 pm
- Monday: 8:30 am - 5:00 pm
- Tuesday: 8:30 am - 5:00 pm
- Wednesday: 8:30 am - 5:00 pm
- Thursday: 8:30 am - 5:00 pm
- Friday: 8:30 am - 7:00 pm
- Saturday: 8:30 am - 5:00 pm

Located just west of Bartlesville in the heart of the Osage Nation in northeast Oklahoma, Osage Hills State Park is a prime example of Oklahoma's natural beauty. With lush forests, rocky bluffs and serene waters, the park boasts 1,100 acres of scenery. A visit to Osage Hills State Park in the fall will inspire visitors, as the foliage transforms from green to vivid shades of yellow, orange and red.

Trails on the rocky, hilly terrain provide a challenge to hikers and mountain bikers, and there are many to choose from in Osage Hills State Park. Visitors may catch a glimpse of white-tailed deer or a wild turkey while on the trails. Tennis courts and a ball field are available to visitors, and the swimming pool provides a great way to cool off on a hot day.

Fishing is a favorite activity in Osage Hills State Park. Anglers can test their skills and try their luck at Lookout Lake or at Sand Creek, which winds through the park. Bass, crappie, catfish and perch, among other fish, can be found.



#### Park Office Hours:

Sunday: 9:00 am - 4:00 pm  
Monday: 9:00 am - 4:00 pm  
Tuesday: 9:00 am - 4:00 pm  
Wednesday: 9:00 am - 4:00 pm  
Thursday: 9:00 am - 4:00 pm  
Friday: 9:00 am - 4:00 pm  
Saturday: 9:00 am - 4:00 pm

# Osage Hills Pawhuska, OK

# Lake Murray State Park

Ardmore, OK

Lake Murray State Park is Oklahoma's first and largest state park consisting of 12,500 acres of forested, rolling hills around beautiful Lake Murray. The park's diverse terrain, exceptional trails and historic sites make Lake Murray State Park a favorite destination among outdoor, water sport and ATV riding enthusiasts.

When it's time to get outside, fishing, boating and a variety of water sports are enjoyed on the 5,728 surface acres of Lake Murray. Outdoor activities include golf, picnicking, camping, trail riding, hayrides, hiking, swimming, miniature golf and paddle boating. Sports facilities include a golf course, tennis courts, and softball and baseball fields. With nearly 1,000 acres of trails for ATVs, motorcycles and dirt bikes, thrill seekers have plenty of terrain to adventure.

The park also has an extensive trail system for hikers and mountain bikers. New Deal, Anadarche, Buckhorn and a new system from the park office to Tucker Tower all combine for more than 30 miles of scenic trails offering a wide variety of hiking and biking experiences. These trails range from fairly simple and flat to moderately difficult with good hills and even some interactions with rock and bluff environments.





Talimena State Park marks the Oklahoma entrance to the Talimena National Scenic Drive, a winding paved road through the Winding Stair Mountains that is known for spectacular spring and fall foliage. Hiking and backpacking trails throughout the Ouachita National Forest begin at Talimena State Park and offer a wide range of scenic, wooded terrain.

Talimena State Park offers 10 RV sites with 30 amp electricity and water hookups, seven designated tent campsites with pads and many other available areas suitable for tents. Picnic facilities include a pavilion with water and electric, extra-large grills and six tables. There are also fire rings, a playground, hiking trails and a comfort station with showers available within the park.



**Hours:**

Sunday: Open 24 hours  
Monday: Open 24 hours  
Tuesday: Open 24 hours  
Wednesday: Open 24 hours  
Thursday: Open 24 hours  
Friday: Open 24 hours  
Saturday: Open 24 hours

# Talimena State Park

Talihina, OK

# Little Sahara

## Waynoka, OK

A prime example of Oklahoma's diverse terrain, Little Sahara State Park boasts over 1,600 acres of sand dunes, ranging in height from 25 to 75 feet. The vast dunes have formed over time from terrace deposits, remnants of prehistoric times when the Cimarron River flowed over the entire area. Located south of Waynoka in northwest Oklahoma, the park offers amenities such as 86 reservable RV sites with water and electricity, 143 tent sites, picnic areas and showers. Concessions are offered in the park seasonally, and groceries and fuel are available nearby.

The main attraction at Little Sahara State Park is dune buggy and ATV riding across the sand dunes. Visitors can either bring their own ATV or rent one off-site by a private vendor. Either way, visitors will have a blast in this mini-desert atmosphere, known as one of the best riding spots for ATVs in the Midwest. The cost is \$10 a day for all drivers and passengers to get on the sand. Passengers under 10 years old are free. Those who bring their own vehicle to Little Sahara State Park are required to follow park rules and regulations.



### Park Office Hours:

- Sunday: 8:00 am - 4:00 pm
- Monday: 8:00 am - 4:00 pm
- Tuesday: 8:00 am - 4:00 pm
- Wednesday: 8:00 am - 4:00 pm
- Thursday: 8:00 am - 4:00 pm
- Friday: 8:00 am - 4:00 pm
- Saturday: 8:00 am - 4:00 pm

Sequoyah State Park is a haven for water lovers and outdoor enthusiasts. With over 19,000 surface acres of water and 225 miles of shoreline on Fort Gibson Lake, the park attracts boaters and beach-goers alike. Visitors enjoy hiking, picnicking, guided horseback trail rides, wildlife watching, nature center activities, golf and disc-golf, fishing and camping.

The newly-renovated Lodge at Sequoyah State Park is Oklahoma's largest set of state park lodges, with 104 rooms and 45 cottages. Amenities include a restaurant, meeting rooms, zero-entry swimming pool with a children's splash park and more. The lodge lobby includes WiFi, a media room, meeting spaces and a restaurant. Large groups can book the bunkhouse, which sleeps 44 people and comes with a main area and kitchen facility.



**Hours:**

Sunday: Open 24 hours  
Monday: Open 24 hours  
Tuesday: Open 24 hours  
Wednesday: Open 24 hours  
Thursday: Open 24 hours  
Friday: Open 24 hours  
Saturday: Open 24 hours

# Sequoyah State Park

Hulbert, OK

# Lake Texoma

## Kingston, OK

Lake Texoma is Oklahoma's second-largest lake and one of the premier striped bass hot spots in the southwest. Besides fishing and a myriad of watersports, Lake Texoma State Park offers swimming, camping, picnic areas, wildlife viewing opportunities and hiking. The park also features comfort stations with showers, boat ramps and a small hiking trail. The privately operated Catfish Bay Marina located within the park offers a full-service marina with a fuel dock and striper guide fishing services. A marina mart featuring a convenience store and gas station is also available on-site.

Lake Texoma State Park's overnight facilities include tent camping and two RV areas. Approximately 88 full hookup RV sites, 41 RV sites with water and electric and 200 tent sites are available. The on-site Rally Campground offers an open grass area with 16 electric clusters accommodating up to four units each with 30 amp electric and water service.



### Park Office Hours:

- Sunday: 8:00 am - 4:30 pm
- Monday: 8:00 am - 4:30 pm
- Tuesday: 8:00 am - 4:30 pm
- Wednesday: 8:00 am - 4:30 pm
- Thursday: 8:00 am - 4:30 pm
- Friday: 8:00 am - 4:30 pm
- Saturday: 8:00 am - 4:30 pm

Located in southwest Oklahoma near Fort Cobb, Fort Cobb State Park offers visitors a wide variety of activities and attractions.

The park borders Fort Cobb Lake, a large lake with 4,000 surface acres for swimming, fishing, boating and water sports. Sunset Cove Marina offers boat and boating equipment rentals, boat slip rentals, a convenience store, fuel and a restaurant. There are multiple boat ramps in the park, and a bait and tackle shop makes fishing convenient. Crappie, catfish, walleye, saugeye, largemouth bass and white bass are some of the fish that can be found in Fort Cobb Lake.



# Fort Cobb State Park

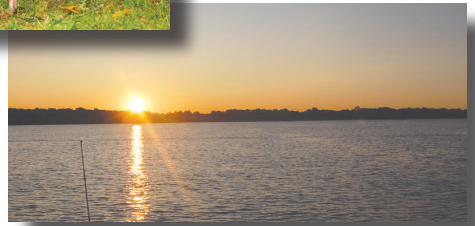
Fort Cobb, OK

# Lake Thunderbird

Norman, OK

Lake Thunderbird State Park offers a variety of water activities and recreation. The park features two marinas (Calypso Cove Marina and Little River Marina), nine boat ramps and two swim beaches. Accommodations include over 200 RV sites with 30 full hookup sites, restroom facilities and primitive campsites. Lake Thunderbird State Park also features playgrounds, picnic tables and an archery range. A total of ten picnic shelters for groups and eight family shelters (Little Axe campground only) are available for reservation through the park office.

Both the Lake Thunderbird State Park Discovery Cove Nature Center and equestrian trails are located in the Clear Bay area. The trails, which are open Wednesday through Sunday, cover four miles and feature 12 obstacles. Negative Coggins papers are required, and no on-site stables are available. An array of hiking, mountain biking and nature trails are also available in Lake Thunderbird State Park. Deer archery and waterfowl hunting are available in designated areas during the applicable seasons.



## Park Office Hours:

Monday: 8:00 am - 4:30 pm

Tuesday: 8:00 am - 4:30 pm

Wednesday: 8:00 am - 4:30 pm

Thursday: 8:00 am - 4:30 pm

Friday: 8:00 am - 4:30 pm

Park is open 24 hours a day

Lake Eufaula State Park is a great choice for an Oklahoma getaway. Whether the stay is short or long-term, a visit to this area will be memorable. Formerly known as Fountainhead State Park, the park is located just south of I-40 near Checotah. Situated on Lake Eufaula, a 102,000 acre reservoir, visitors can enjoy many activities on land and water.

Observe Oklahoma's diverse foliage and wildlife on hiking trails like Bluebird Trail. Visitors can bike around the expansive park's mountain bike trails. Saddle up for a guided horseback ride at on-site Lake Eufaula Stables, or bring your own horse to explore the trails. Learn about native animals and plant species at the Deep Fork Nature Center, where kids and adults can participate in naturalist programs and activities. The park also offers many playgrounds and a fishing pond.



#### Park Office Hours:

Sunday: 8:00 am - 5:00 pm  
Monday: 8:00 am - 5:00 pm  
Tuesday: 8:00 am - 5:00 pm  
Wednesday: 8:00 am - 5:00 pm  
Thursday: 8:00 am - 5:00 pm  
Friday: 8:00 am - 5:00 pm  
Saturday: 8:00 am - 5:00 pm

# Lake Eufaula

Checotah, OK

# National Route 66 Museum

Elk City, OK

Visit the National Route 66 & Transportation Museum in Elk City to take a journey through each of the eight states Route 66 passes through – from Illinois all the way to California. See quirky roadside attractions that lured people to stop, and get a feel for the experience of traveling down Route 66. Walk through displays of antique cars and historical documents detailing the narrative of America’s highway.

The National Route 66 & Transportation Museum invites both children and adults to experience automobiles of the past with interactive and hands-on displays. “Drive” down Route 66 in a 1955 pink Cadillac and watch a black and white movie at a mock drive-in theater while sitting in a classic Chevy Impala. The museum is part of the Elk City Museum Complex, complete with displays and artifacts that give a glimpse into the lives of early settlers in Western Oklahoma, as well as the Farm and Ranch Museum, celebrating Oklahoma’s agricultural heritage. While you’re at the complex, make sure to see the replicas of a schoolhouse, opera house, doctor’s office and chapel, and immerse yourself in pioneer history.



Hours:

Monday – Saturday:

9:00am – 5:00pm

Sunday: 1:00pm – 5:00pm

[www.visitelkcity.com](http://www.visitelkcity.com)



# Stafford Air & Space Museum

Weatherford, OK

The Stafford Air & Space Museum is named in honor of Weatherford native and legendary test pilot and astronaut, Lt. General Thomas P. Stafford. Stafford was born in 1930 and raised in Weatherford, OK. His mother came to Oklahoma in a covered wagon and lived to see her only child fly to the moon. Stafford was selected by NASA in the second group of astronauts in 1962. He would fly 4 historic space missions (Gemini 6, Gemini 9, Apollo 10, and Apollo-Soyuz), three of them as Mission Commander. For his efforts as Joint Commander of the U.S. and Soviet Apollo-Soyuz mission, Stafford received a Nobel Peace Prize nomination. Stafford is the recipient of many prestigious awards, including the Congressional Space Medal of Honor, the NASA Distinguished Service Medal, and the Oklahoma Aviator of the Century Award.

Named a Smithsonian Affiliate in 2011, the museum houses over an acre of exhibits under roof and showcases thousands of items representing the evolution of aviation and spaceflight. Examples include a ten-story Titan II rocket, actual space suits – including Stafford's flown Apollo 10 pressure suit, an Apollo Command & Service Module, and one of the most impressive collections of rocket engines in the world. Highlights are a gigantic F-1 from the Saturn V, Gemini VI, a flown Shuttle Main Engine, and a flown segment of a Shuttle Solid Rocket Booster you can walk through.



[staffordmuseum.org](http://staffordmuseum.org)

Hours:  
Monday – Saturday:  
9:00am – 5:00pm  
Sunday: 1:00pm – 5:00pm

# Index of Advertisers

2 Tailgate Gypsies .....	48	Leonardo's Children's	
Ace.....	17	Museum.....	48
ASAP.....	18	Liberty Church.....	4
Bank of Hydro.....	55	Long & Associates .....	54
Bass Pro Shops.....	63	Lucille's.....	32
BBQ Shed.....	20	Lug-A-Jug.....	28
Bedlam BBQ.....	64	Magill Insurance.....	5
Bokays.....	20	Main Street Clothing.....	54
Brandhorst Realty.....	16	Medicine Park.....	60
Butcher's.....	4	Miss Trudy's.....	20
Casa Soto.....	8	Molly's Landing.....	40
Casino Oklahoma.....	49	Moore-Lindsay Museum.....	62
Central West Real Estate...	55	More than Medicine.....	13
Christensen Law.....	29	Murrow Indian	
City of Clinton.....	44	Children's Home.....	62
City of Weatherford.....	22	Nutopia Nuts.....	57
Corn Bible Academy.....	38	Oklahoma Back Roads	
Country Connection		Motorcycle Tours.....	68
News.....	54	Oklahoma Hall of Fame.....	64
Cross Heat & Air.....	9	Pecina's.....	5
Davis Properties.....	2	Prairie West.....	30
Deer Creek Hardware.....	56	Prohibition.....	17
Deer Creek Market.....	56	Real Estate Professionals..	100
Donna Jackson.....	63	Remax.....	28
Eagle Realty.....	3	Rick's Boots.....	25
El Patio.....	19	Southwest Trophy.....	54
Elk City.....	46	Stafford Air &	
Et Cetera Shop.....	21	Space Museum.....	7
First National Bank.....	23	Strebel Creek Vineyard.....	65
Flash Back Retro Pub.....	69	Swan Dairy.....	39
Frisco Center.....	43	SWOSU.....	6
General Tommy		The Debt Clinic.....	58
Franks Museum.....	51	Tinsley's RV Park.....	8
GiGi's Gourmet Popcorn.....	65	Town of Hinton.....	50
H&C Services & Supply.....	12	Tranquil Skies Cabin.....	38
Health Express.....	24	Travel Unlimited.....	21
Heartland Museum.....	16	Tulsa Port of Catoosa.....	67
Holiday Inn.....	31	Uptown Marketplace.....	12
Hubbly Bubbly.....	72	Walmart.....	14
Jerry's.....	9	Wanderlust Crossings.....	10 & 11
Jimmy Bishop's.....	74	Weatherford Chamber of	
Kelley Jewelers.....	26	Commerce.....	15
Lake Murray Marina.....	71	Weatherford NAPA.....	24
Lawton Community		Weatherford Regional	
Theater.....	58	Hospital.....	27

# Oklahoma Coverage

Oklahomans want to know

Get your message to over **340,000** readers



Easy • Efficient • Effective

**We can do what  
NO ONE ELSE CAN!**

ReidNewspapers.com  
580-772-3301

# Parade of Homes

**Let us open the door  
to your new home.**

**WATCH FOR EXCITING DETAILS ABOUT THE 2020 PARADE**

**ABC Realty  
580-772-9990**

**LTD Sooner Realty  
580-772-6500**

**Brandhorst Realty  
580-772-8152**

**Magill Real Estate  
580-772-7101**

**Bulldog Realty  
580-774-9873**

**Davis Properties  
580-772-0606**

**Central West Real Estate  
405-268-7000**

**REMAX Gold Buckle Realty  
580-330-9090**

**Eagle Realty  
580-772-8300**

**Green Real Estate  
580-302-3210**

**Hartsell Real Estate  
580-772-8045**



MULTIPLE LISTING SERVICE  
**MLS**<sup>SM</sup>



Weatherford Area Chamber of Commerce  
**Real Estate Professionals**