



Check out our Fair Section in today's paper!

A friendly chipmunk invites readers to enjoy the Rawlins County Fair section in this week's paper. His photo, entered by Maggie Holle, was awarded Grand Champion in photography.

RAWLINS COUNTY SQUARE DEAL

e-mail: atwood.news@nwkansas.com

"A Voice for New Frontiers"

VOL. 28, NO. 48

14 PAGES

THURSDAY, AUG. 20, 2020

ATWOOD, KAN. 67730

PHONE: (785) 626-3600

Rawlins County sees first case of coronavirus

The first case of coronavirus disease has been identified in Rawlins County, according to a press release by the Rawlins County Public Health Department.

The case involves a 33-year-old male resident. He currently is recovering at home. Public Health is currently investigating close contacts and travel history. If you are a close contact, someone from the public health department will be contacting you. The county health department is working to identify all close contacts of this individual and those who were exposed are being contacted. Instructions have been provided to those case contacts to monitor for symptoms of COVID-19, to include fever and respiratory symptoms. No further information about the patient will be released.

"While Rawlins County has been working hard to lower the chances of spreading the virus, we knew we could not stop this virus from reaching us," Karla Heble, R.N. Public Health Officer said. "It is important to continue to do your part to keep the spread slow. Please adhere to the following recommendations:

- Avoid non-essential trips and stay home if you can.
- Follow all recommendations regarding self quarantine.
- Avoid large gatherings
- If you need to go out in public, ensure you maintain six feet distance from other people. If you cannot maintain the physical distance, wear a face cover."

County residents can stay informed by visiting the County Health Department's Facebook page or by phone 785-626-3968.

Sports seasons to open with senior nights

Senior nights at RCHS will take place before the first competitions of the year, according to an announcement by Athletic Director Deone Horinek. "Because of the unknown duration of the seasons, we feel

that it is better to honor our seniors sooner rather than later," Horinek said.

Volleyball will be at approximately 6:45 p.m. Sept. 3. Football, band and cheerleaders will be at 6:45 p.m. Sept. 4.

Volleyball fund raiser



Senior Kai Morrison and sophomore Judy Hawkins sell snow cones to raise funds for the upcoming Rawlins County High School Volleyball season.

Photo by Kati Latulip

News at a Glance

Kindergarten, 1st Grade students to meet Friday

Kindergarten and first grade students will be welcomed by their teachers at Rawlins County Elementary School between 10 a.m. and noon Friday, Aug. 21. It will be a time to bring their supplies and get acquainted with their classrooms. It is requested that only the student and parents, not other family members, come for this orientation.



Among the measures being taken by USD 105 for the coming school year plexiglass shields (above) that keep students divided while sitting at tables. Cameron Palmer (right) demonstrated one of the free standing thermometers that all students and staff will have to use upon entering school buildings. Photos by Kati Latulip



Schools unveil protective equipment

By Rosalie Ross

The board for USD 105 met in regular session Aug. 17 and heard a report on the school budget for the upcoming year from Wes Dreyer. He explained that the budget was based on enrollment figures from last year. He said there is very little variation, although the official enrollment count date is Sept. 21.

The public budget hearing is set for 8 a.m., Monday Aug. 24 in the elementary school board room.

Questions were raised concerning fund-

ing for all of the COVID-19 equipment and safety devices. Dreyer reassured the board that federal money from SPARK and CARES programs will cover the district's needs for the year.

Protective Equipment

The district has purchased three free standing Thermovu thermometers for the elementary school and four for the high school. Temperatures for all who enter the school buildings can be checked by holding a hand in front of the device. There are also 38 hand-held thermometers for bus drivers or teachers use.

Cleansing fogger-misters are now being used in classrooms. The room can be cleansed and the chemical dried in two minutes. These have been recommended by health departments.

Some plexiglass shields have been purchased for use when students are at tables. Various models are under consideration.

In other action, the board:

- Approved the use of communication device policy following a second reading.
- Approved the payment of claims.

See SCHOOLS, Page 3A

Commissioners hold special meetings

By Kati Latulip

Recent weeks have been especially busy for the Rawlins County Board of Commissioners. Special meetings were held Aug. 11, 12 and 13 with Commissioners Craig Cox, Wilbur Henry and Alan Solko, County Attorney Charles Peckham and County Clerk Rachel Finley in attendance.

The Aug. 11 meeting included a presentation by Karla Heble regarding funds received by the health department. A portion of the funds was allocated toward a COVID-19 testing machine and additional supplies for a total of \$37,000. Heble requested a motion to approve the purchase the building on the

corner of 4th and Vine Streets for \$40,000. That motion was approved and the purchase will be made using the county building fund.

The meeting Aug. 12 canvassed the 2020 primary election. Election Officer Rachel Finley presented nine provisional ballots to the Commissioners. Only five ballots could be counted due to voters' failure to register in Rawlins County. The board voted to certify votes for the 2020 Primary Election. The meeting also covered economic development and 2021 budget planning. Commissioners agreed to hold the budget hearing Monday, Aug. 31 at 11:30 a.m.

Cathy Domsch, Karla Heble and Ryan Murray presented the Rawlins County

Strengthening People and Revitalizing Kansas, or SPARK, plan to the Commissioners Aug. 13. The plan was approved. Domsch, Heble, the commissioners and County Attorney Peckham discussed plans for the new public health building.

A regular meeting was held Monday, Aug. 17. The board voted to approve the contract with Penco to inspect bridges around the county at \$90 per bridge. The Rawlins County Health Center requested a motion to purchase Jason Bergling's house for \$112,000. That motion was also approved. Karla Heble requested an executive session for non-elected personnel for five minutes. No action was taken.

New tire service business opens in Atwood

By Rosalie Ross

James Richardson has established a new business at the location where he has been working for the past 15 years.

Triple J Tire Service became official June 1 after Richardson leased space from Frontier Ag on State Street in Atwood.

"I am planning to be available by phone 24/7," Richardson said. "I have been pleasantly surprised at how busy I've been."

The business will focus on truck and tractor tire repair with on the road, farm or field service. All vehicles needing tires or tire repair will be welcomed, too.

"I will sell new tires and can order various brands from my distributors. It's just according to what my customers want," he said.

Richardson also does oil changes and sells Cenex products.

The new business owner grew up in Stratton, Neb. He and his wife, Brittany, have four children in Atwood schools.

Frontier Ag will continue to have their bulk fuel business and gas fueling island from the same location.



James Richardson stood in front of the sign at his new business, Triple J Tire Service in Atwood.

Photo by Rosalie Ross

"I am pretty much a one-man show right now," Richardson said. "But I expect to offer good service and hope to establish a satisfied customer base."

Triple J Tire Service can be reached day or night by calling 785-626-6207.

Tuesday Markets

Courtesy of Decatur Co-op, Herndon

WHEAT: \$3.96

MILO: \$3.35

CORN: \$3.05

Our View

Some progress can be measured

Out here in western Kansas, we like to think of ourselves as insulated from racial issues and political questions, but we no longer live in some lily-white world where we can pat ourselves on the back with the assurance that it's not our problem.

If we want to live up to the promise of America, to the ideals Thomas Jefferson so eloquently addressed in the Declaration of Independence, we still have a long ways to go.

For while Jefferson's vision may have been blurred, and his character flawed, his ideas and ideals shine before us yet today, almost 250 years later, as a goal and a challenge. To say America has not lived up to its ideals is hardly new. We know we have not.

But do not say we have not tried, or that we do not continue to strive to reach the heights he set out in the Declaration of Independence and our Constitution.

We should know by now that it's not possible to find heroes who will meet our standards in any generation. Jefferson himself, forward thinker that he was, is as good an example as we might find.

He was said to have hated slavery yet owned slaves, fathered children by one, at least, and yet never freed them. He saw them as essential to his life as a Virginia planter, as did most of his contemporaries.

His grand vision that "all men are created equal" apparently was meant to apply only to white, property-owning males of a certain class. The irony of this contradictory thinking is entwined in our history since. We had to fight a terrible war to end slavery, it took a century and a half to give women the vote, nearly another century to make them full participants in the system.

And we still have not fully dealt with the remains of the slave system, which brought blacks to our shores in chains, then relegated them to the lowest of classes, kept millions in a kind of economic subjugation that kept them, legally and practically, apart.

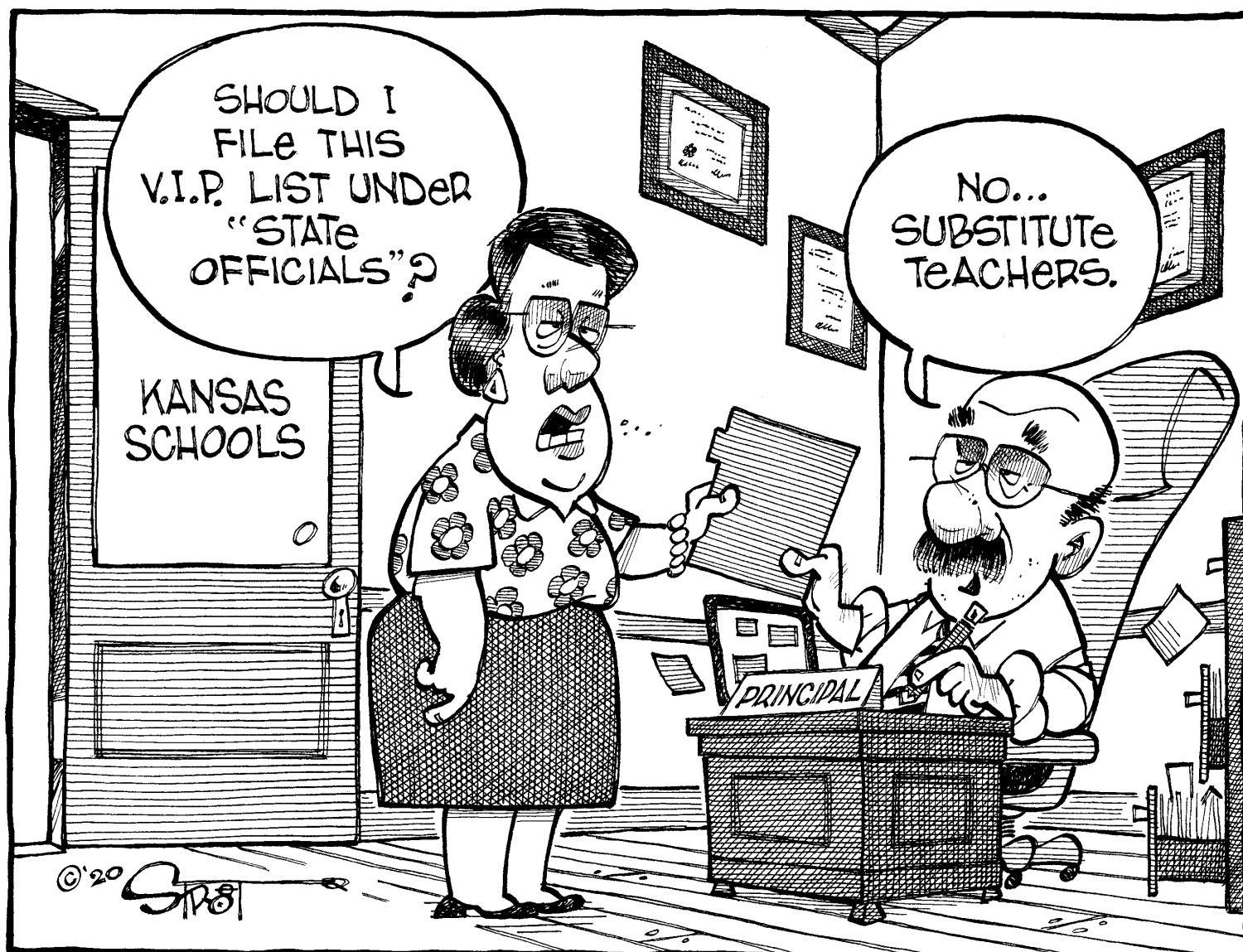
Progress we have made: We elected a Black man as president, all but buried the Confederate battle flag, the Stars and Bars, and ordered equal treatment for all. We've done everything, it seems, but bring people together in peace and friendship, and that is the hardest part.

But let's give ourselves credit: despite what some may say, we've worked hard and constantly to change things, to get to a better place. We're just not there yet. We should be closer.

Maybe we demand too much, more than mere men can deliver. But as a nation, we keep trying.

Instead of trying to rewrite history, why not join together to live up to the high ideals that those Virginians, Jefferson, Washington, Madison and Monroe, and all the cohort dreamed of. Where they failed, we can do better. Where they dissembled, we can be straight.

That's what America should be about, not its human failings, but its oh-so-lofty ideals. Why not aim to fulfill them? — *Steve Haynes*



Accidents

I was in Colorado last week, back at my old haunts in the San Luis Valley.

Driving down U.S. 160, I went by a two-vehicle wreck with firemen, police and emergency medical workers. The ambulance was just leaving as I went by, and it soon passed me on its way to the hospital.

The lights, the intensity brought back memories of when I was part of the drama, part of the team trying to help, not just someone driving past trying to stay out of the way.

I remember four wrecks during the years I served on the volunteer ambulance crew for the tiny mountain town of Creede.

One was a young man on a motorcycle who had tried to pass a car pulling a travel trailer. While he tried to pass on the right, the driver of the car, who didn't see him, turned right. The young man and his bike skidded under the trailer.

I helped get him out and take him to the hospital. I remember, it was impossible to get his blood pressure as he had two broken arms and a broken leg. At the hospital, he underwent emergency surgery for internal injuries. He lived to tell his tale, and when I visited him, he showed me the staples from the surgery.

The next accident I remember wasn't really an accident at all. At least, no one was injured

Cynthia Haynes Open Season

when a sport-utility rolled off a mountain road between Creede and Lake City.

When we arrived, the truck was on its side with belongings scattered about. We went up a little trail a ways and came upon the bodies of a young man and woman. There was nothing we could do for them. They had been shot.

Later we learned they were eloping and had picked up a "friend" who was traveling with them. The friend killed them both up there in the mountains and tried to drive off in their truck. He couldn't handle the big Blazer going downhill on the county road.

The third accident also involved death.

A man on a cell phone — they were rare then, but some people had them — ran a stop sign as he was entering U.S. 160, a busy cross-state highway. He hit a van and a second vehicle ran into the accident, making it a mess of crunched metal and human suffering.

There were at least eight victims, including one dead at the scene. Two more died later, including a woman I had helped.

At the time, I was no longer on the ambulance crew; I was just headed for my job as a pharmacist in the next town over.

The last accident was more personal. I was a victim.

We picked up a woman with a broken foot high in the mountains, about an hour up the Rio Grande from town. The roads were rough and the blow-up "air splint" we put on her kept leaking. As long as it was blown up, she was reasonably comfortable, but when it became too deflated, she was in a lot of pain, so I kept blowing it up.

The rough road knocked out our lights and siren, and it was the middle of summer, lots of traffic. The driver radioed for help going through a small town, which had the hospital we normally went to. However, since this woman had a broken foot, we were told to take her to Alamosa, two towns on down the

road, to a hospital with an orthopedic specialist.

The police officer in the town we were going through didn't know this, however, and when he got to the hospital, he swung his patrol car around to block traffic and we ran right over it.

He wasn't hurt, but his car was totaled. The ambulance driver was wearing his seat belt and he wasn't hurt, but I had taken mine off to blow up the cast again.

I was thrown across the compartment into a bank of oxygen bottles. I had a cut on my head that bled like crazy.

A voice from the front asked if we were OK. The patient replied, "I'm OK, but it looks like your EMT could use some help."

As soon as they sorted things out, the driver continued on to the larger hospital with two patients. The second emergency medical technician took over keeping the cast blown up and kept me from bleeding all over the place. At the hospital the woman with a broken foot and I both got the care we needed. I ended up with a gash on my forehead, covered by a bandage held on by a strip of cloth like some revolutionary soldier in an old painting, and two black eyes.

I try to keep my seat belt on these days. And when I pass a wreck, I appreciate the quick, knowledgeable action of those helping.

Rawlins County Weather for August 19th – 23rd

Wed	Thu	Fri	Sat	Sun
90/60	88/60	92/62	94/63	92/62

Normal High: 85 Monthly Rain: 0.93" Departure from Norm: -0.83"
 Normal Low: 57 Year Total 15.05" Departure from Norm: -7.69"
 Sunrise 7:00 to 7:04 AM | Sunset: 8:30 to 8:36 PM

An amplified ridge and high-pressure over the 4-Corners and Rockies will be the dominating weather feature keeping storm activity along Front Range and Eastern CO or deflecting them to our north in Central NE or east in Central KS. Thursday the ridge weakens a bit allowing a front and piece of energy to move closer to the Tri-state region and will be our best shot for some scattered storm activity in the evening and overnight. Friday and through the weekend the ridge elongates east over the Southern and Central Plains with hot and dry conditions.

Copyright © 2020

Weather

by Reggie Vrbas, Weatherman

Date	H	L	P
Aug 12	96	58	.43
Aug 13	90	63	.0
Aug 14	94	68	.0
Aug 15	93	64	.0
Aug 16	86	63	.0
Aug 17	96	56	.30
Aug 18	92	56	.0

RAWLINS COUNTY SQUARE DEAL

Haynes Publishing Co.
Steve and Cynthia Haynes, publishers

Rosalie Ross, associate editor
Amy Mosley, advertising
Kati Latulip, reporter

Phone: (785) 626 3600 or 3061
Fax: (785) 626-9299

squaredeal114@sbcglobal.net
For news:
atwood.news@nwkansan.com
For ads:
atwood.ads@nwkansan.com

The Rawlins County Square Deal is published weekly by Haynes Publishing Co., 114 S. Fourth St., Atwood, Kan., 67730. Periodical postage paid at Atwood, Kan., (USPS 010-025) and at additional offices.

Annual subscription rates are \$42 in Rawlins, Cheyenne, Decatur, Sherman and Thomas counties, Kansas, and Hitchcock, Dundy and Red Willow counties, Nebraska; \$48 elsewhere in Kansas, \$52 out of state, rates above include access to e-edition; \$42 anywhere in the world for e-edition only.

POSTMASTER: Send change of address to the Goodland Star-News, 1205 Main, Goodland, Kan. 67735.

When our opinions get as immovable as a granite outhouse, God has a way of shaking the foundation.

I was searching for an artist who could lend just the right feeling to a book I was putting together. I found such a person. He lived in a remote mountain town and had no phone. With the help of the local postmistress and several letters, he agreed to illustrate my book.

Besides his unique artistic style, he was a good cowboy. Over the months of correspondence and our occasional visits on his local pay phone, I developed a genuine liking and respect for him.

We agreed to meet at the Cowboy Poetry Gathering in Elko, Nevada.

I arrived Thursday night and began to test the limits of my envelope! I had the makin's of

Baxter Black, DVM On the edge of common sense

Sponsored by Mark Mosley

a personal best brewing when I spied an old friend, a big man whose effort had done much to promote cowboy poetry. I shook his hand warmly. It was then I noticed he was wearing a little short ponytail. I was overcome! I dressed him down for his uncowboy fashion statement and finished by removing the decorative ribbon binding his furry polyp!

Just then I felt a tap on the shoulder. I turned and a young man reached to shake my hand. He was decked out in his bucka-

roo finest. He introduced himself and remarked that he enjoyed my work. He explained that he was an actor.

As he talked, I focused on his earring. Earring! I became incensed! I lectured him on manly pride and ended up trying to bite off his earlobe!

In retrospect it occurred to me that I might have overreacted. Fortunately these good fellows merely escaped my grasp rather than permanently disfigure me.

The next day I was walking through the crowd when I heard

Where to write

U.S. Sen. Pat Roberts, 109 Hart Senate Office Building, Washington D.C. 20510. (202) 224-4774; website – roberts.senate.gov.

U.S. Sen. Jerry Moran, Dirksen Senate Office Building, Room 521, Washington, D.C. 20510. (202) 224-6521; Fax (202) 228-6966. website – http://moran.senate.gov.

U.S. Rep. Roger Marshall, 1st Congressional District, 312 Cannon House Office Building, Washington D.C., 20575-1601.

(202-225-2715) Website – https://marshall.house.gov.

State Sen. Rick Billinger, State Capitol Building Rm 236-E, 300 SW 10th, Topeka, Kan. 66612. Phone (785) 296-7399, home (785) 899-4700; e-mail address Rick.Billinger@senate.ks.gov.

State Rep. Adam Smith, State Capitol Building, Rm. 151-C, 300 SW 10th, Topeka, Kan. 66612. (785) 296-0715; e-mail address Adam.Smith@house.ks.gov.

Schools

From Page 1

- Approved the transportation supervisor's job description.
- Voted to sell a surplus Ford Expedition and a Chevy Suburban by sealed bid with Sept. 18 as closing bid date.
- Heard a report from Victoria Rall, Parent Teacher Organization president, who explained the organization's plans for the year, which includes raising funds to fulfill the teachers' wish list.
- Received a report from Matt Smith who said the junior high-high school buildings are prepared for school and teachers have been advised about their responsibilities during the pandemic.

"We will be calling parents if kids have a temperature and we have plans in place

to cover classes if a teacher is sick," Smith explained.

Smith told the board that the Northwest Kansas League administrators have determined to follow the KSHSAA directives for activities. Spectators will wear masks for indoor contests and USD 105 plans to do temp checks at the gym doors.

- Alyssa Vanderhorn, reporting to the board by phone, said the elementary school teachers have been sharing resource needs and clarifying some issues about how to proceed if the district has to go remote.

Supt. Goddard noted that his Facebook page has been averaging 160 views daily. He said the district will continue to follow the county guidelines for COVID policies.

He told the board he was developing personal and district goals to include long term

plans and measurable steps of progress.

Following an executive session, the board hired Crystal Wahrman as a special ed para and Kenny Chartier as a bus driver.

They accepted the resignation of Rob Beckman as assistant high school basketball coach and the resignation of Jen Antholz as special ed para.

After a separate executive session, they approved the enrollment of an out-of-district student.

Those present were Megan Rippe, who conducted the meeting, board members Bill Finley, Matt Finley, Diana Kastens, Terry Ballard and Jessica Miller. Isaac Marintzer was unable to attend. Others present included Supt. Eric Stoddard, Wes Dreyer, Matt Smith and by phone, Alyssa Vanderhorn. Emily Green, board clerk was also present.

Kastens, Simmingers visit old POW camp

Lance and Krista Simminger and Ted and Gertie Kastens went to Indianola, Neb. Aug. 8 to attend the dedication of the Prisoner of War national marker, which is now on the National Register.

They viewed artifacts from the

camp, as well as three different videos.

The camp was open from 1943 to 1945 and held 3,000 Germans and Italians.

One lady, who had worked at the camp, shared some information. She said the prisoners did

not care for American bread, so they made their own.

Prisoners were brought in by train at night. People in town had to have all their lights out so the prisoners could not see the town as they marched one mile north to the camp.

Simmingers and Kastens were treated to a private tour of the camp's original site and saw

several special places that had been there.

Some of the prisoners worked for farmers in the area. Some liked it so well that they did not want to return to Germany and Italy after the war because they did not know what would happen to them and they liked it in America.

McDonald News

By Sandy Binning

Twila Miller called on Marlene Johnson Sunday afternoon. Mr. Mrs. Ray Johnson of Cimarron, KS were Thursday over-

night guests of Lois Morelock.

Josh and Sammie Johnson and boys were late Friday afternoon visitors of Phyllis Wilkinson on her patio.

McDonald council approves city budget

McDonald City Council members reviewed the city budget for the upcoming year and adopted it during their Aug. 12 regular meeting.

They also adopted the state ordinances for traffic and public offenses.

The city will seek a replacement for Judge Dorothy Reinert, who is retiring.

Bruce Nickel gave the police report and Rose Gordon gave the list of overdue water accounts.

The council voted to move the cardboard trailer to the city

property by the burn pile because the trailer was not getting emptied regularly even through it is overflowing.

It was agreed to send out letters to owners whose property was out of hand.

Mayor Gary Loker conducted the meeting. Council members present included J.B. Loker, Roy Hubbard, Mike Indermuhle and Melinda Basnett. Others in attendance were City Manager Bruce Nickel, City Treasurer Laura Brogan and City Clerk Rose Gordon.

South of McDonald

By Sandy Binning

Rita Officer spent Saturday at Mark and Marilee Gundlach's home visiting Randy and Melissa Regier, Kale and Jennifer Regier and children, and Alexi Breytenbach and sons.

Melissa Regier, Alexi Breytenbach and sons, Sebastian and Fletcher, and Darien Regier are

spending Sunday through Tuesday at Rita Officer's home.

Tru and Tom Dewey attended Tucker Prideaux's 13th birthday party Saturday.

Craig and Diane Cox spent last weekend in Duncan, OK celebrating JB Cox's 95th birthday.

George and Kathy Banister visited June Maaske Monday afternoon in Atwood.

Photo contest is open through Aug. 31

The Ranchland Trust of Kansas (RTK) photography contest will be open through August 31. The contest is open to professional and amateur photographers of all ages. Photographs entered showcase the natural beauty of ranching and grazing lands across the state. The competition offers Kansans the chance to explore and capture the many activities, seasons and faces of Kansas' ranching tradition.

Participants should submit photos expressing the mission of RTK: "To preserve Kansas' ranching heritage and open spaces

for future generations through the conservation of working landscapes." This may include landscape, livestock and people, with preference to grasslands, grazing land, ranchers, cattle and much more. Participants may enter up to five photos. Entries will be judged by a panel of professionals in the field of photography and by RTK representatives.

All prizes for the contest are sponsored by Wolfe's Camera of Topeka. Wolfe's will award 10 photo cards to all 10 category winners. Categories include: Grand Prize, Landscape, Livestock, People, Youth (ages

5-17), Kansas Livestock Association member, Fan Favorite via Facebook voting and three honorable mentions. The grand prize winner will receive their choice of an 11" x 14" stretched photo canvas or a 12" x 18" metal print of their winning photo.

For full contest rules and to enter, visit www.ranchlandtrustofkansas.org and find Photo Contest on the News and Events page. For questions, please contact Samantha Weishaar at (785) 273-5115 or samantha@kla.org.

Company banned from door-to-door sales in Kansas

A Missouri tree care, asphalt and paving company has been permanently banned from door-to-door sales in Kansas and ordered to pay nearly \$20,000 in fines and restitution for violations of the Kansas Consumer Protection Act involving elderly residents, Attorney General Derek Schmidt said.

Harlan Wayne Dilday, an individual, along with Dilday & Sons Complete Tree Care, LLC, and Dilday & Sons Asphalt and Paving, LLC, all of Holden, Missouri, were banned from door-to-door sales and solicitations in Kansas. The companies are limited liability corporations owned by Dilday. District Court Judge David J. King approved the consent judgment this week in Leavenworth County District

Court.

The court order requires Dilday to pay \$10,000 in civil fines and penalties, \$8,000 in restitution, and \$1,705.50 in investigative fees and expenses.

Schmidt accused Dilday of engaging in fraudulent consumer transactions against elderly Kansans in violation of state law, including failure to provide complete copies of contracts for services containing a consumer's notice of the three day right to cancel the transaction. Schmidt also accused Dilday of taking advantage of the consumers' physical infirmities, ignorance, illiteracy, inability to understand the language of an agreement or similar factors. Finally, Dilday was accused of inducing consumers to agree-

ing to one-sided transactions in favor of the company.

Schmidt reminded consumers that under Kansas law, any door-to-door sale must include

a three-day right to cancel, and the salesperson must inform the consumer of this right both verbally and in writing at the time of the sale.

BOOSTER CLUB

Join us for an Ice Cream Social!
Friday, August 28, 2020 @ 5 PM
At the High School

• FREE WILL DONATIONS. Proceeds benefit Booster Club

Friday's Fall Sports Scrimmages


Bring a sports drink for our athletes!	4 p.m.: Junior High Volleyball
	5 p.m.: Youth Football
	5:30 p.m.: High School Volleyball
	6 p.m.: Junior High Football
	7 p.m.: High School Football

Happy Birthday, Mom!

Carol Hestermann is turning 85 years young on August 29th! Please help us honor our lovely Mother with a shower of cards. You can send her birthday wishes to:

107 Pearl Street
Atwood, KS 67730

We love you Mom!
-Michael, Michelle, David & Dianne



Back to School Style Show

Wednesday, Sept. 9
Come and Go 4-8 p.m.
Style Show 6:30 p.m.

Door prizes, appetizers and drink specials

Rustic Cross Boutique

701 N. 4th St., Atwood, KS

Visit us on Facebook!
Rustic Cross Online Boutique

Obituaries

Marcia May Wilcoxon

Marcia May Wilcoxon, daughter of Ward and Daisy (Constable) Anderson was born November 5, 1923 in Atwood, Kansas. She died August 12, 2020 in Beaumont, Texas, age 96.

She attended elementary and high schools in Atwood, Kansas, and graduated from Colorado State College of Education in Greeley, Colorado.

On March 30, 1948 she was married to Francis D. (Frank) Wilcoxon, and they lived in Ft. Collins, Colorado. After Frank finished veterinary college, the couple moved to Lincoln, Nebraska. Their next home was Platte Center, Nebraska, and here their first two children were born: Susan in 1950 and Roderick (Roddy) in 1951. In 1952, the family moved to Albion, Nebraska, where two more children were born: John in 1954 and Sarah in 1958.

Mrs. Wilcoxon taught school for three years at Petersburg High School and in September

1968 she was hired as business education instructor at Albion High School. She retired from teaching in May 1990.

She missed teaching, so she substituted for the next five years at Albion and neighboring high schools.

She was a member of the United Methodist Church of Albion, where she served as a teacher in the Sunday School and Vacation Bible School. She was a member of the United Methodist Women and served as Membership Chairman for several years. Marcia was a member of the P.E.O. Sisterhood since 1960. Her hobby was knitting, and she taught others to knit through adult education classes.

Survivors are Dr. Susan (Dr. R.P.) Major of Lincoln, John Wilcoxon of Albion, Sarah (Dr. Howard D.) Wilcox of Beaumont, TX, four grandchildren and three great-grandchildren.

Preceding her in death were her husband, her son Roddy at age 5, her parents, and two sisters.



Philip Dale Davis

Philip Dale Davis died on August 13, 2020. He was born October 24, 1931 to George and Gaynell (Fuerstock) Davis and was the youngest of nine children. He was preceded in death by his parents; his beloved wife, Jody; brothers, Harlan, Donald, and Harold and sisters, Vida Arimintout, Thelma Davis, Elizabeth "Betty Lou" Mudgett, and Shirley Gregory.

Phil's interest in horses began at a very young age while helping his uncle on the farm where he learned to drive a team of horses. In 1940, after his father was killed in a farm accident, the family moved to Greeley, where an owner of a horse barn recognized Phil's talent which led to his first job with the Remount Ranch in Cheyenne, Wyoming, after he graduated from High School in 1950.

In August of 1952, his cowboy ways had to be put on hold as he was drafted into the Army during the Korean War. Phil served in the HQ Company 1st Battalion, 27th Infantry Regiment and was released from active duty in August of 1954. He was placed in the Army Reserves and later Honorably Discharged.

Upon returning home, Phil went back to work for the Remount Ranch, deciding shortly after that he needed to increase his knowledge of cattle and horses. So, Phil and his best friend, Joe Maldonado, left to travel and work on several different ranches from Arizona to Montana.

On June 14, 1956, he met Jody Redman, the blonde that would forever change his life. They married on November 1, 1958, in Fort Collins, Colorado. This union, by a small miracle, produced one child the following year, a daughter, Julie Dawn. Phil and Jody moved to Elbert County, in 1958, where they would spend the rest of their lives. They celebrated 57 years of marriage before she died in 2015.

Phil's first job upon moving was for the John Ewing Company where he was hired to manage a herd of yearlings, band of broad mares, and to their surprise a band of sheep. In 1968, Phil went to A.I. school and life on the ranch soon changed as all efforts were focused on building a purebred Charolais herd. Out of this effort came a prize herd of cattle as well as Phil's passion to become the best A.I. technician. Phil, along with others from Elbert county were pioneers in the cattle industry as artificial insemination changed the landscape. After 12 years, his skill

landed Phil his second and final job in Elbert County with Rob Brown from Throckmorton, Texas.

Phil and Jody helped Rob establish Brown Simmental Breeders which later became the RA Brown Ranch. Their program resulted in many award-winning cows and a very prominent Simmental breeding program. With Jody by his side, keeping records, Phil managed the place like it was his own and success was achieved. Phil's conception rate as an A.I. technician was a solid 97% during his time on the ranch. Phil and Jody were part of what became known as the RA Brown Legacy. After many years of success and accolades with the ranch, Phil retired after 40 years.

One thing a person might overlook was Phil's ability on a horse. He had a talent for breaking colts and by the time he was finished they were cow horses. You had better be paying attention while riding a horse he trained or else you would find yourself on the ground like a few of his daughter's suitors. All of the cattle work was done using horses and just because he carried a rope didn't mean he always used it. Phil was simply a great herdsman, horseman, and the cowboy that always rode for the brand.

Phil was also active in the Elbert-Douglas Livestock Association and the Elbert County Fair Board for over 35 years, where he served as the President of the fair board for several years. While President of the fair board he helped to obtain the money used to build the livestock arena and the ag building. You would always find him supporting Jody with her many volunteer organizations and activities.

He is survived by his daughter, Julie (Walt) Marble of Atwood, KS; two grandchildren, Echo (Jacob) Hagler of Atwood, KS and Chance (Michelle) Marble of Brewster, KS; adopted grandson, Ethan (Whitney) Smith, of Colby, KS; his brother, Marvin of Sinclair, WY; three great grandchildren, Emma, Ben, and Ella Hagler of Atwood, KS; as well as numerous cousins, nephews, nieces, and a multitude of extended family and friends.

Memorial Service will 10:00 a.m., Friday 21, 2020, Agate Church, Agate, CO. A private Inurnment will be held at later date. In lieu of flower memorials are suggested to help defray funeral costs in care of Baalman Mortuary, PO Box 391, Colby KS.

Farmers Market

Mondays from 8:30 a.m.-12 p.m. or until we sell out!

Located across from Jamboree Foods.



PREPARE YOURSELF THE COLD IS COMING. NOW CONTRACTING PROPANE

Pre-pay, 10¢ deposit and Payment Plan Pricing Available

Route and Will Call Deliveries

Referral Discounts

Contract pricing available now through August 31.

Contract deliveries begin October 1.

CS GAS, INC.

BULK OIL, FUEL AND PROPANE
Mobil 785-626-6357 PROPRANE
ATWOOD, KANSAS

Hansen foundation has scholarships available

The Dane G. Hansen Foundation will make scholarships available in four categories to students in 26 Northwest Kansas counties for the 2020-2021 academic year. Students from an accredited high school, registered independent, private or home school in one of the following 26 counties are eligible to apply: Cheyenne, Cloud, Decatur, Ellis, Ellsworth, Gove, Graham, Jewell, Lincoln, Logan, Mitchell, Norton, Osborne, Ottawa, Phillips, Rawlins, Republic, Rooks, Russell, Saline, Sheridan, Sherman, Smith, Thomas, Trego and Wallace.

Scholarships available for students who will graduate in the current academic year are: Seven Leaders of Tomorrow Scholarships with annual stipends of \$10,000 renewable for three additional years if criteria established by the Scholarship Committee are met. Recipients must attend an accredited four-year public, private or church related Kansas college or university.

Thirty-Five Hansen Scholarships with stipends of \$6500 renewable for three additional years if criteria established by the Scholarship Committee are met. Recipients must attend an accredited four-year public, private or church related Kansas college or university.

One hundred Hansen Career and Technical Education Scholarships with stipends of \$4000 renewable for one additional year, providing the recipients have achieved at least a 3.00 GPA at the college level. Career and Technical Education Scholarships are available to encourage high school seniors who seek competence through career training. An applicant for the Career and Technical Education Scholarship must complete an application form that is available from the high school counselor or it can be downloaded from our website at www.danehansen-foundation.org. The Scholarship Committee is interested in the student's character, activities and goals. Applicants for the Hansen Career and Technical Education Scholarship are not required to take a qualifying test. A 3.50 GPA is not necessary to apply for this scholarship. Career and Technical Education applicants must be planning on attending one of the following schools in Northwest Kansas: North Central Kansas Technical College (Beloit or Hays), Colby Community College, Northwest Kansas Technical College, Hays Academy of Hair Design (Hays or Salina), Cloud County Community College, Salina Area Technical College,

college or university. Seventy Hansen Student Scholarships with stipends of \$4000 renewable for one additional year, providing the recipients have achieved at least a 3.00 GPA at the college level. Recipients must attend an accredited community, public, private or church related college or university in Kansas.

To qualify for the above scholarships, a student must have taken the ACT test and have a composite score of 21 or higher and have at least a 3.50 GPA (un-weighted). The student should be an active participant in extracurricular school and community activities, display good citizenship, leadership, and moral integrity.

Students planning to enter the competition for Leaders of Tomorrow, Hansen Scholar or Hansen Student scholarships must register at their school and take the qualifying test at locations to be announced. Information on all scholarships has been sent to qualifying area schools. Tentative test dates have been set for September 16th and 17th, 2020.

One hundred Hansen Career and Technical Education Scholarships with stipends of \$4000 renewable for one additional year, providing the recipients have achieved at least a 3.00 GPA

at the college level. Career and Technical Education Scholarships are available to encourage high school seniors who seek competence through career training. An applicant for the Career and Technical Education Scholarship must complete an application form that is available from the high school counselor or it can be downloaded from our website at www.danehansen-foundation.org. The Scholarship Committee is interested in the student's character, activities and goals. Applicants for the Hansen Career and Technical Education Scholarship are not required to take a qualifying test. A 3.50 GPA is not necessary to apply for this scholarship. Career and Technical Education applicants must be planning on attending one of the following schools in Northwest Kansas: North Central Kansas Technical College (Beloit or Hays), Colby Community College, Northwest Kansas Technical College, Hays Academy of Hair Design (Hays or Salina), Cloud County Community College, Salina Area Technical College,

Fort Hays State University (2-year program) or Kansas State Polytechnic - Salina (2-year program).

Through scholarships the Trustees of the Dane G. Hansen Foundation encourage good citizenship and high achievement in academic endeavors. Improvement of educational opportunities for students in Western Kansas ranks high among the objectives of the Trustees of the Hansen Foundation.

The Hansen Foundation is in its 46th year of service to the young people of Northwest Kansas through the insight and generosity of the late Dane G. Hansen of Logan, Kansas. The book DANE GRAY HANSEN: TITAN OF NORTHWEST KANSAS by Billy M. Jones (1962) describes Dane G. Hansen and his contributions to Northwest Kansas.

All students are encouraged to visit the foundation's Facebook page and website for the current information on scholarships. The foundation's website is available at www.danehansen-foundation.org.

Herndon council approves electrical work

By Kati Latulip

The Herndon City Council met on Aug. 10. Payment of the annual bond, the annual railroad lease, and electrical work done for the city was approved. The Rawlins County Square Deal was declared the official city newspaper. Three

notices were sent for unpaid city bills. Potential upcoming maintenance concerns were discussed and no further action was taken.

Council members present were David Ketterl, LaVerne Frick, Pat Allen and Darla Lovelady. Also present was City Clerk Kelsey Wahrman.

Fort Hays starts esports

Fort Hays State University has added a new varsity sport this fall.

While competition in the university's fall NCAA-sanctioned sports was suspended because of COVID-19, Fort Hays Varsity Esports, a sports competition using video games, will begin entering tournaments in September. Sixteen varsity players in four game titles will represent Fort Hays State in the varsity team's inaugural year.

Fort Hays State has fielded competitive teams in its Esports Club for several years. The university's first varsity team is an initiative funded through the university's Strategic Enrollment Planning process and was approved this past spring.

Scholarships are available for varsity players, and Esports Director Kevin Shaffer has started the recruiting process for expanding the team.

The Esports Club will have members manning a table at next week's Back to School Party on the Quad Monday and Tuesday,

and Shaffer expects it to be a popular booth. Esports, the largest gaming market in the world, is expected to gross more than \$1 billion this year. The most popular game, League of Legends, features 100 million active players logging in per month.

Shaffer, associate professor of informatics, said this fall the club plans to join the National Association of Collegiate Esports, which oversees the management of college esports teams.

Any Fort Hays student can join the Esports Club. The varsity team will be comprised of gamers who are enrolled as full-time, on-campus students (12 hours for undergraduates and nine hours for graduate students).

The Esports Club gaming lab is located in Hammond Hall 110. While the club met once a week last year, most of the meetings currently are being conducted through Zoom.

For more information about the Esports Club and its new varsity team, visit tigerlink.fhsu.edu/organization/esportsclub.

Colby art show is Sept. 3

ArtRageous, the first art show of the school year for the Colby Community College art department, is scheduled from 6 to 8 p.m. on Thursday, Sept. 3, at the Prairie Museum of Art and History.

The show features a mix of two and three-dimensional works. CCC art instructor Rebel Mahieu said the event has a unique format.

"Artists will bring two or four pieces," she said. "Most of them will be at the show to describe how the pieces they hang contrast with their style."

Contributing artists include Kary Zwegardt, CCC alumnus and curator of the Quincy Art

Gallery in St. Francis, along with his wife Kim; Joe Hartman, Mahieu, Mike McLaughlin, and Suzanne Schielke from Colby; retired CCC art instructor Cal Mahin and retired Fort Hays State University art instructor Kathleen Kuchar of Hays; current FHSU art instructors Toby Flores, Brian Hutchinson and Linda Ganstrom; Garden City Community College art instructor Michael Knutson; Tony Sprivey of Goodland; and Great Bend's Von Pounds.

Food and drinks will be offered. For more information, contact Mahieu at (785) 460-5459.

Senior Center

Aug. 24-28

Reservations or cancellations are due the day before, 785-626-3341. Requested contribution: \$3.50 per meal. Guests under 60: \$6.50 on site or home delivery.

Monday- Chicken strips, mashed potatoes and gravy, beets, bread, mandarin oranges
Tuesday- Pork cutlet, scal-

loped potatoes, mixed vegetables, bread, watermelon

Wednesday- Taco salad, refried beans, chips, five cup salad

Thursday- Pasta salad with ham, cantaloupe, crackers, bar cookie

Friday- Tuna and noodles, brussels sprouts, bread, hot cinnamon apple slices

Midway

By Mary Lou Olson

Congratulations to Pastor Gene and Julie Layne who observed their 65th wedding anniversary on Friday. He is a former pastor of the Herndon Covenant Church and his wife is a native of McDonald. Mail will reach them at 1927 W. 4th Ave., Holdrege, NE 68949.

Kirk Kelley of Davenport, Iowa, and Sheldon Kelley of Frederick, Colo., came Wednes-

day to visit a few days with their parents, Dick and Donna Kelley.

Dr. Morris and Dolores Talbert will observe their 60th wedding anniversary on Aug. 21. Mrs. Talbert is a native of this community and the daughter of the late Paul and Alma Erickson. Their children, Tim, Becky and Tami, and families are honoring them with a card shower. Mail will reach them at P.O. Box 322, Stockton, KS 67669.

Kevin and Mary Holle, Orrin

and Beth Holle, Henry, Eli, Maggie and Will, Bob Reuther and Zach Chubb enjoyed a fishing trip to Waconda Lake at Glen Elder last Tuesday.

A board meeting will be held following 10 a.m. morning wor-

ship services on Sunday at the Herndon Covenant Church.

Galen Olson and Arian Arnold visited on Wednesday afternoon with Bob and Sally Henningson in Oberlin.



NEW SYSTEM WINDOW CLEANING

SERVING NW KANSAS SINCE 1992
COLBY, KS • (800) 611-6735

FREE ESTIMATES
COMMERCIAL - RESIDENTIAL
- HARD WATER REMOVAL

[WWW.MYWINDOWCLEANER.NET](http://www.mywindowcleaner.net)



My Place

One Bite and We Gotcha!

Lunch & Dinner Specials
Carry Out Available!

Highway 36, Atwood • (785) 626-9677

Monday - Saturday 11 a.m. - 8 p.m.
Sundays 11 a.m. - 2 p.m.



Fence Supplies

We have a good supply on hand —
Red Brand 2 pt. Barbed Wire
Wood Posts T-Posts Steel Rod Posts
Electric Fence Wire Insulators
Splice Kits for barbed and smooth wire
Fence Stretching Tools

Call or stop by for pricing —

THE GREAT OUTDOORS

Highway 36, Atwood 785-626-9425

Published in the Rawlins County Square Deal on Thursday, Aug. 20, 2020.

NOTICE OF BUDGET HEARING

The governing body of
Driftwood Township
Rawlins County

will meet on August 30th, 2020 at 1:30 p.m. at Randy Timm's Residence 4977 Road 23 50 Ludell, Kansas 67744 for the purpose of hearing and answering objections of taxpayers relating to the proposed use of all funds and the amount of ad valorem tax. Detailed budget information is available at Rawlins County Clerk's Office and will be available at this hearing.

BUDGET SUMMARY

Proposed Budget 2021 Expenditures and Amount of 2020 Ad Valorem Tax establish the maximum limits of the 2021 budget. Estimated Tax Rate is subject to change depending on the final assessed valuation.

Fund	Prior Year Actual 2019		Current Year Estimate 2020		Proposed Budget 2021		
	Expenditures	Actual Tax Rate*	Expenditures	Actual Tax Rate*	Budget Authority for Expenditures	Amount of 2020 Ad Valorem Tax	Est. Tax Rate*
General	1,632		1,795		2,645		
Debt Service							
Library							
Road							
Special Machinery							
Totals	1,632	0.000	1,795	0.000	2,645	0	0.000
Less: Transfers	0		0		0		
Net Expenditure	1,632		1,795		2,645		
Total Tax Levied	0		0		XXXXXXXXXXXXXXX		
Assessed Valuation:							
Township	9,380,315		10,190,568		10,263,196		
Outstanding Indebtedness, Jan 1	2018		2019		2020		
G.O. Bonds	0		0		0		
Other	0		0		0		
Lease Purchase Principal	0		0		0		
Total	0		0		0		

*Tax rates are expressed in mills.

Driftwood Township
Governing Body

Published in the Rawlins County Square Deal on Thursday, Aug. 20, 2020.

NOTICE OF BUDGET HEARING

The governing body of
Center Township
Rawlins County

will meet on August 31st, 2020 at 6:00 p.m. at Atwood Lake Atwood, Kansas 67730 for the purpose of hearing and answering objections of taxpayers relating to the proposed use of all funds and the amount of ad valorem tax. Detailed budget information is available at Rawlins County Clerk's Office and will be available at this hearing.

BUDGET SUMMARY

Proposed Budget 2021 Expenditures and Amount of 2020 Ad Valorem Tax establish the maximum limits of the 2021 budget. Estimated Tax Rate is subject to change depending on the final assessed valuation.

Fund	Prior Year Actual 2019		Current Year Estimate 2020		Proposed Budget 2021		
	Expenditures	Actual Tax Rate*	Expenditures	Actual Tax Rate*	Budget Authority for Expenditures	Amount of 2020 Ad Valorem Tax	Est. Tax Rate*
General	178		450				
Debt Service							
Library							
Road							
Cemetery	4,150	0.452	5,100	0.452	6,100	5,475	0.439
Special Machinery							
Totals	4,328	0.452	5,550	0.452	6,100	5,475	0.439
Less: Transfers	0		0		0		
Net Expenditure	4,328		5,550		6,100		
Total Tax Levied	5,330		5,479		XXXXXXXXXXXXXXX		
Assessed Valuation:							
Township	10,545,975		12,136,597		12,480,352		
Outstanding Indebtedness, Jan 1	2018		2019		2020		
G.O. Bonds	0		0		0		
Other	0		0		0		
Lease Purchase Principal	0		0		0		
Total	0		0		0		

*Tax rates are expressed in mills.

Center Township
Governing Body

2020 Primary Election Official Results

Election officer Rachel Finley released the following official results of the Aug. 4 primary after the canvass. Precinct results are available at the County Clerk's office at the courthouse.

Republican Primary

US Senator		
Vote for 1		
John Miller	7	.81
Steve Roberts	8	.93
Gabriel Mark Robles	4	.47
Lance Berland	18	2.09
John L. Berman	2	.23
Derek C. Ellis	3	.35
Bob Hamilton	130	15.12
Kris Kobach	204	23.72
David Alan Lindstrom	18	2.09
Roger Marshall	457	53.14
Brian Matlock	9	1.05

U.S. Representative 1st District		
Vote for 1		
Jerry Molstad	342	39.63
Michael Soetaert	12	1.39
Bill Clifford	237	27.46
Tracey Mann	272	31.52

State Senator 40th District		
Vote for 1		
Richard (Rick) Billinger	767	100.00

State representatives 120th		
Vote for 1		
Adam Smith	727	100.00

Judge 15th, Division 1		
Vote for 1		
Kevin N. Berens	700	100.00

Judge, 15th, Division 2		
Vote for 1		
Scott Showalter	657	100.00

Mag Judge, 15th, Pos 6		
Vote for 1		
James R. Schroeder	752	100.00

Comm 2nd District		
Vote for 1		
Wilbur R. Henry	81	27.27
Mark Mosley	216	72.73

Comm 3rd District		
Vote for 1		
Craig Cox	84	29.17
Lincoln Pochop	204	70.83

County Clerk		
Vote for 1		
Rachel Finley	686	100.00

County Treasurer		
Vote for 1		
Jeri L. Rahe	778	100.00

Reg of Deeds		
Vote for 1		
Carolyn A. Marshall	802	100.00

County Attorney		
Vote for 1		
Isaac LeBlanc	717	100.00

Sheriff		
Vote for 1		
Robbyn Hodgs	629	100.00

Democratic Primary

US Senator		
Vote for 1		
Robert Leon Tillman	12	19.67
Barbara Bollier	49	80.33

U.S. Representative 1st District		
Vote for 1		
Christy Cauble Davis	19	33.33
Kali Barnett	38	66.67

State Senator 40th District		
Vote for 1		
Larry Joseph Dreiling	52	100.00

State representatives 120th		
Vote for 1		
WRITE-IN	3	100.00

Speaker encourages small town economies to be 'idea friendly'

The economic pain being felt in small towns across the United States during the COVID-19 pandemic is not something most people want to talk about.

But Becky McCray will. "I wish we didn't have to talk about this, but it's something that's on all of our minds right now," said McCray, co-founder of Save Your Town, a consulting business that guides people toward making their small towns a better place to live.

"All small towns are facing the challenge of rebuilding their local economy. And the advice we hear is often meant for cities or big business districts. It doesn't meet our small town reality."

McCray was the featured speaker Aug. 7 during K-State Research and Extension's monthly online series, First Friday e-Calls, which helps to nurture small businesses and inspire entrepreneurship in Kansas.

A highly sought-after speaker, McCray noted that rural communities are usually pretty resilient, having survived dips in the agriculture markets, oil busts, recessions and more.

"The current crisis is different for a couple reasons," she said. "This time, we have lost a lot of jobs and even entire businesses. The businesses that remain are not in great shape. And it's not just locally, but the whole country and the whole world."

"Right now," McCray added, "we can't depend on help from the outside, so we are going to have to focus on what you can do with what you already have locally."

She said that being resilient in challenging times will require that towns develop an "idea-friendly" attitude.

"We need to be more open to new ideas," McCray said. "Iowa State University studied 99 small towns over 20 years and found that the communities that survived the best were the ones that were open to new ideas. And it makes sense. If you are open to new ideas, you can deal with

new challenges."


McCray said three ways to be 'idea-friendly' include:

Support participation in business by many people. Start a community-wide email list to promote all businesses in town. "Your goal is to build a huge, combined list that reaches as many people as possible. What you're trying to do is rally everybody in the community to support local businesses and keep up to date with what's going on." Use the list to share photos, videos and other information; and to communicate which businesses are providing delivery, curb-side pickup, phone orders, special hours and more.

Connect businesses to each other. Fellow business owners can often help more than experts. Find others in the community who may already be successful at selling products online, grant writing, or marketing on social media. "You're going to find ways to connect and re-circulate money in your local economy so that it can do more good in your community." In the short term, money circulating because of business partnerships helps the local economy. Longer term, the partnerships formed help the local economy become more resilient to future shocks.

Take small steps, rather than high-risk bets. Businesses should seek ways to help customers, such as offering flexible payments or by offering smaller items and budget-friendly options for products. Loyalty programs, Buy One/Get One deals and small giveaways are incentives for local residents to support local businesses.

"Don't forget to talk about how you're giving back," McCray said. "Tell people about it. Put it in that new community-wide email that you're starting. You and your local businesses are the ones doing something for your people, so talk about it. These small steps build feelings of pride and community, and you are building your social capital."




Knights of Columbus Annual Barbeque

Saturday, Aug. 22, serving at 6:30 p.m. at the Knights of Columbus Hall

Serving BBQ Pork and Chicken with all the Fixings. Dine in or curbside pickup available. Everyone welcome!

**Adults: \$12
Kids age 6-12: \$6 • Under 5 FREE
(Families won't pay over \$40)**

NO BINGO THIS YEAR DUE TO COVID



FOR ALL YOUR SEED WHEAT NEEDS

**Call Jim Tubbs for Seed Sales
(785) 443-1062**

AM Eastwood.....\$11.00 Bu.	Lonerider.....\$9.00 Bu.
Avery\$9.00 Bu.	Reg. Silverado.....\$16.00 Bu.
Brawl CL Plus.....\$11.00 Bu.	T-158.....\$9.00 Bu.
Byrd.....\$9.00 Bu.	Tatanka.....\$9.00 Bu.
Langin.....\$9.00 Bu.	

**Call George Tubbs for
Cleaning and Treating Your Seed
(785) 443-1053**



Wheat Haven Home
is a residential care facility for seniors. Located in McDonald Kansas, we offer a home away from home for your loved ones. **We are now accepting residents and employing CNAs and CMAs.** Call Eileen at 785-230-0244 for an application or for more information.

WHEATHAVEN
For pictures go to [Wheat Haven Home on Facebook](#)

Still Running to Fetch the Paper?



NO MORE! Sit back, relax, enjoy a treat and read your favorite newspaper online!

**Subscribe online at:
www.squaredealnews.com**

RAWLINS COUNTY



SQUARE DEAL

"A Voice for New Frontiers"

Church Directory

Are you Jesus?

**By Keith Reuther
Herndon Covenant Church**

Many years ago, I read a story about a man who helped a blind teenage girl. She had been selling apples off a table at a train station. A group of hurrying commuters had accidentally overturned the table in their rush to catch their train. The produce had gone everywhere and unfortunately most everyone was so focused on getting home that they did not stop and help. When this man came along, the girl was in tears, groping desperately for her lost apples.

Kneeling down on the floor with her, he gathered up the apples, put them back on the table, and helped reorganize her display. As he did this, he noticed that many of the apples had become battered and bruised; these he set aside in another basket. When he had finished, he pulled out his wallet and gave her forty dollars to pay for the damaged fruit. Then he asked, "Are you okay?" She nodded through her tears.

To make a change to your church's entry in the directory, please e-mail us at atwood.news@nwkansan.com

As he started to walk away, the blind girl called to him, "Mister ..." He paused and took a step back to her. She continued, "Are you Jesus?"

As Christians, we are to demonstrate the love and grace of Jesus to the fallen and hurting world around us. Unfortunately, too often we are in such a hurry or too focused on our own desires to look around and notice the needs of others and it is unlikely that anyone will ever mistake us for Jesus or even one of his followers.

I want to encourage us all to consider how we can better represent Jesus Christ in our lives. Are we being gracious and accepting as Jesus was to the outcasts and sinners around him? Do we see the world with eyes of compassion and mercy or are we too self-centered? Someone once said that we should treat everyone as though they were hurting and ninety-nine percent of the time we will be right.

May God bless you this week.

United Methodist Church
Pastor Abby Caseman
Sunday: Worship 10 a.m.
Monday: Bible Study, 7:30 a.m.; Noon Prayer Lunch, Wesley Room.; Core Community, 5:30 p.m.
Tuesday: Bible Study, 10 a.m.; UMW, 2nd Tuesday of the month, 6:30 p.m.
Wednesday: Ladies Luncheon, 4th Wednesday of the month at Mojo's.

Herndon Covenant Church
Rural Herndon
Pastor Keith Reuther
Sunday: Sunday School, 9:45 a.m.; Morning Worship, 10 a.m.; Youth Group, 4 p.m.

Courts of Praise
Pastor Kent Morgan
Sunday: Bible teaching for all ages: 9:45 a.m.; Worship Service: 10:45 a.m..
Wednesday: Bible Study: 8-9 p.m.

Redeemer Lutheran Church
Pastor Steven Frank
Saturday: Service: 6 p.m.
Sunday: Worship: 9 a.m.; Sunday School: 10:15 a.m.;
Wednesday: Midweek supper and classes, 6 p.m.

Herndon Immanuel Church
Herndon
Sunday: Worship Service: 10 a.m.

First Christian Church
Pastor David Todd
Sunday: Fellowship: 9:30 a.m.; Morning Worship, 10 a.m.; Sunday School: 11 a.m.

Sacred Heart Church
Atwood - Father Norbert Dlabal
Masses: Sunday: 10:30 a.m. Saturday and preceding Holy Days: 5 p.m.; Weekdays: 7:30 a.m.
Wednesday CCD: 6:30 p.m.

St. Mary's Church
Herndon - Father Norbert Dlabal
Mass: Sunday: 8:30 a.m.
Confessions: One-half hour before Mass or as requested.
Thursday Mass: 9 a.m.

St. John's Church
Beardsley - Father Joseph Asiratham
Mass: 1st Sunday: 8:30 a.m.; remaining weekends: Saturday 7 p.m.

Atwood Baptist Church
Pastor Craig Kearby
Sunday: Sunday School: 9:45 a.m.; Worship: 10:30 a.m.; Sunday Evening Worship: 6 p.m.
Wednesday: Prayer Meeting, 7 p.m.

McDonald Federated Church
Pastor Mark Adams
Sunday: Sunday School: 10 a.m.; Worship Service: 11 a.m.
Wednesday: Awana Club: 4:30 p.m.

Currier Drug

**McDougal Sager
& Snodgrass Grain Inc**

Baalmann Mortuary

**The Rawlins County
Square Deal**

Public Notice - Delinquent Taxes

Atwood City
Hemming's Addn
Chessmore, Royal Raymond & V, Lot 6, Blk 15, 611,
Peterson, James M Lloyd's Addn, Lot 1-2&N1/2 3, Blk 16, 1564,
Lloyd's Addn
Bellinger, Todd E (Tod) , Lot N 130' 5-6, Blk 14, 430,
Garcia, Daniel A & Delgado Lot Multiple, Blk 10, 1523,
Mapes, Harold L (Tod) , Lot N/2 12-15, Blk 10, 356,
Puckett, Tad J, Lot W20' 10;11, Blk 3, 1303,
Romme, Rick J & Susan M, Lot 6, Blk 15, 332,
Romme, Rick J & Susan M, Lot 9, Blk 15, 275,
Vincent, Jeff S, Lot 1, Blk 8, 298,
Roesch-Ginther Addn
Colby Congregation Of Jehova, Lot Pt 1, Blk 6, 860,
Original Town-Atwood
Atwood Property Development, Lot 11, Blk 2, 183,
Mayo, Nancy L, Lot 13, Blk 6, 273,
Rodas, Helen Leota, Lot 7, Blk 14, 2349,
Singhateh, Kalilu & Jolene, Lot 3-4; E3' 5, Blk 14, 946,
Vic Innovations, Inc, Lot Pt 6-9, Blk 21, 1603,
Vic Innovations, Inc, Lot 15, Blk 33, 1494,
Carroll, Kegan S & Kimberly, 08, 03, 033, 24.01
Chessmore, Stanley D, 08, 03, 033, 695.92
Dingey, Richard L & La Vonne, 08, 03, 033, 711.26
Draper, Nolan E, 05, 03, 033, 1197.39
Draper, Nolan E, 05, 03, 033, 62.77
Maris, Jackie D & Shirley J, 08, 03, 033, 910.76
Pearce, Cheryl, 08, 03, 033, 300.69
Pearce, Cheryl, 08, 03, 033, 219.09
Peterson, Greg, 05, 03, 033, 15.17
Poore, Zachary W & Wanda, 08, 03, 033, 373.34
Skiles, Lee E & Diana Y, 08, 03, 033, 3.07
Sprague, Donald, 08, 03, 033, 249.27
Timson Family Trust, 08, 03, 033, 1812.73
Wederski, Earl F, 08, 03, 033, 257.84

Herndon Herndon City
First Addn
Gibson, Joyce Marie, Lot 1, Blk C, 332.85,
Second Addn-Herndon
Wahrman, Glen & Kelsey, Lot 7, Blk 3, 16.81,
O'learys Addn
Allen, Joshua Scott, Lot 3, Blk 2, 1047.69,
Brown, Caleb Sage Hoyt, Lot 11, Blk 4, 12.34,
Brown, Caleb Sage Hoyt, Lot 7, Blk 4, 7.6,
Brown, Caleb Sage Hoyt, Lot 8, Blk 4, 214.05,
Eby, Laura J, Lot 1, Blk 3, 231.2,
Lorentz, Rodney, Lot 1, Blk 1, 7.76,
Niemeth, Laverne, Lot 7-10; N2 11, Blk 3, 32.78,
Ruhter, Edward G, Lot 3, Blk 4, 107.39,
Smith, Heather D, Lot 1, Blk 4, 646.71,
Original Town-Herndon
Janousek, Lydia F, Lot 5, Blk 11, 112.63,
Meixner, Lloyd, Lot Pt 10, Pt 11, Blk 7, 382.6,
Norlin, Dino, Lot W 90' 7-8, Blk 4, 516.89,
Romme, Rick & Susan, Lot 11,

Blk 1, 82.6,
Romme, Rick & Susan, Lot 12, Blk 1, 284.64,
Romme, Rick & Susan, Lot 7, Blk 1, 163.74,
Romme, Rick & Susan, Lot 9, Blk 1, 246.2,
Solko, Tim, Lot Pt 18, Blk 13, 141.87,
Stabler, Linda J, Lot 3, Blk 12, 12.44,
Stover, Michael E, Lot 1, Blk 3, 586.16,
Thomson, Justin L & Trail, S, Lot 9, Blk 4, 610.51,
Wahrman, Francis & Darlene, Lot 5, Blk 1, 183.88,
Wahrman, Francis & Darlene, Lot 1-4; N391 5, Blk 10, 13.17,
Wahrman, Francis & Darlene, Lot 7, Blk 11, 303.8,
Wahrman, Glen & Kelsey, Lot 5, Blk 8, 518.57,
Wahrman, Glen & Kelsey, Lot 6, Blk 8, 99.98,
Wahrman, Glen M & Kelsey L, Lot 7, Blk 10, 10.48,
Lorentz, Rodney, 03, 02, 031, 204.81
Trail, Derek & Farrah, 03, 02, 031, 257.22
Mcdonald City
Eastern Extension
Miesner, Dean F Jr, Lot 1, Blk 18, 543.87,
Heer's Addn
Knapp, Michael, Lot 9, Blk 1, 107.16,
Mayfield, Shawn W, Lot N-15' 8; 9, Blk 7, 580.17,
Mcgaffig, Todd A, Lot S371 4; 5-6, Blk 4, 64.89,
Poore, Zack, Lot 11, Blk 1, 14.68,
Second Addn-Mcdonald
Basnett, Donald & Melinda, Lot 9, Blk 27, 271.26,
Basnett, Donald G & Melinda, Lot 7, Blk 27, 648.49,
Kelley, Lysle R & Tarry D, Lot 12, Blk 28, 9.59,
Toler, Jerry D, Lot 5, Blk 29, 366.76,
Original Town-Mcdonald
Bohanon, Tim & Jeanny, Lot 13, Blk 11, 296.07,
Burns, Dave & Kristin, Lot 1, Blk 11, 331.88,
Ginther, Brent L & Caroline, Lot E-66' 1, Blk 14, 386.47,
Persinger, Jack L & Persinge P, Lot 4, Blk 6, 762.75,
Eterson, Bonnie, Lot 4, Blk 9, 291.71,
Poore, Zachary & Wanda, Lot 13, Blk 6, 494.72,
Poore, Zack, Lot 17, Blk 10, 171.92,
Poore, Zack & Wanda, Lot 7, Blk 7, 84.25,
Poore, Zack W, Lot 1, Blk 5, 1866.24,
Schneider, Steven F, Lot 1, Blk 3, 1398.8,
Schneider, Steven F, Lot 7, Blk 3, 151.22,
Thomas, Pamela, Lot 7, Blk 15, 948.49,
Herl
Harvego, Edwin Etal, 19, 01, 032, 926.69
Henningsen, Anthony C, 24, 02, 031, 163.11
Henningsen, Anthony C, 09, 03, 031, 81.38
Henningsen, Anthony C, 10, 03, 031, 1438.28
Hrh Land Trust, 01, 02, 031, 942.53
Puckett, Tad J, 11, 02, 031, 339.22
Solko, Timothy J, 09, 02, 031, 714.97
Wahrman, Clint, 34, 01, 032, 523.36
Wahrman, Clinton, 33, 01, 032, 187.39
Wahrman, Francis, 23, 1, 31,

149.09
Wahrman, Francis, 26, 1, 31, 484.80
Wahrman, Francis & Darlene, 34, 1, 32, 333.91
Wahrman, Francis Eugene, 02, 1, 31, 499.42
Wahrman, Francis Eugene, 11, 1, 31, 267.40
Wendelin, Karl Bruce & Norma, 12, 2, 31, 4.79
Witt, James & Kimberly, 24, 2, 31, 24.62
Herl
Hawkes, Jennie G, 05, 01, 032, 2.85
Hawkes, Jennie G Heirs, 04, 01, 031, 1.71
Hawkes, Jennie G Heirs, 09, 01, 031, 1.71
Lucas, Stephen A, 25, 01, 031, 2.85
Lucas, Stephen A, 36, 01, 031, 0.57
Lucas, Stephen A, 36, 01, 031, 1.71
Lucas, Stephen A, 36, 01, 031, 2.85
Malone, Frances Fell, 30, 01, 031, 6.27
Malone, Frances Fell, 04, 02, 031, 6.27
Malone, Frances Fell, 14, 03, 031, 3.42
Malone, Frances Fell, 23, 03, 031, 3.42
Stanford, J.E, 20, 01, 032, 15.39
Herl
Fanning, Richard H & Kathlee, 19, 03, 031, 335.05
Henningsen, John A Etal, 32, 05, 032, 3.86
Montague Family Trust & Zide, 32, 04, 032, 491.21
Urban, Agnes F Trust, 32, 04, 032, 138.64
Gerl
Poylio, Elaine Carolyn, 32, 01, 032, 46.80
Driftwood
Harvego, Edwin Etal, 24, 01, 033, 333.13
Horinek, Lester, 25, 01, 034, 602.12
Horinek, Lester, 36, 01, 034, 1436.27
Horinek, Lester L, 25, 01, 034, 1661.39
Sis, Jarett & Rose Marie, 06, 01, 034, 835.16
Sis, Jarett B & Rose Marie, 06, 01, 034, 761.96
Driftwood
Andreson, William H, 9, 01, 034, 2.38
Scoby, Brad, 1, 01, 034, 16.07
Scoby, Helen Joan, 12, 01, 034, 31.54
Scoby, Joan, 1, 01, 034, 31.54
Smith, Carolyn Bradley Tst, 9, 01, 034, 7.14
Thompson, Mary Louise, 9, 01, 034, 1.79
Rocewood
Bell, Cheryl L, 17, 04, 036, 189.27
Bell, Cheryl L, 20, 04, 036, 1060.66
Bell, Cheryl L, 29, 04, 036, 1971.74
Bell, Ronald C, 14, 03, 036, 3224.56
Bell, Ronald C, 21, 03, 036, 1275.77
Bell, Ronald C, 21, 03, 036, 0.32
Bell, Ronald C, 21, 04, 036, 3447.77
Bell, Ronald C & Cheryl, 21, 04, 036, 1955.66
Forrester, Sheila Lynn, 18, 04, 036, 2232.74
Frisbie Wheat & Hereford Far,

36, 01, 036, 785.48
Frisbie Wheat & Hereford Far, 18, 02, 035, 1095.90
Frisbie Wheat & Hereford Far, 18, 02, 035, 1011.16
Frisbie Wheat & Hereford Far, 19, 02, 035, 3245.50
Frisbie Wheat & Hereford Far, 13, 02, 036, 3391.16
Frisbie Wheat & Hereford Far, 13, 02, 036, 1158.11
Frisbie, David, 15, 02, 035, 1522.45
Frisbie, David & Sandy, 16, 02, 035, 2316.53
Frisbie, David & Sandy, 17, 02, 035, 7089.23
Frisbie, David & Sandy, 23, 02, 036, 2117.49
Frisbie, David, 01, 02, 036, 1149.54
Frisbie, David, 13, 02, 036, 2201.95
Kopriva, Bryan, 28, 02, 035, 793.44
Northwest Seed & Supply, 24, 03, 036, 1242.64
Phipps, Blaine R, 07, 02, 035, 1093.04
Shannon, Earl & Michael, 20, 03, 036, 514.91
Sis, Jarett & Rose Marie, 01, 01, 035, 576.35
Sis, Jarett B & Rose Marie, 12, 01, 035, 2627.21
Thomas, Pam Bell, 24, 03, 036, 318.62
Thomas, Pamela Sue, 24, 03, 036, 4771.19
Rocewood
Casper, Calli & Eric Etal, 03, 03, 035, 250.49
Romme, Rick J & Susan M, 03, 03, 035, 773.12
Center
Original Town-Blakeman
Puckett, Tad J, Lot 1, Blk 23, 24.49,
Puckett, Tad J, Lot 13, Blk 23, 24.49,
Puckett, Tad J, Lot 1, Blk 24, 24.49,
Puckett, Tad J, Lot 7, Blk 24, 24.49,
Puckett, Tad J, Lot 1, Blk 25, 24.49,
Puckett, Tad J, Lot 1, Blk 26, 24.49,
Puckett, Tad J, Lot 1, Blk 27, 24.49,
Puckett, Tad J, Lot 7, Blk 27, 38.69,
Puckett, Tad J, Lot 1, Blk 28, 132.12,
Puckett, Tad J, Lot 13, Blk 28, 44.03,
Puckett, Tad J, Lot 16, Blk 28, 14.03,
Puckett, Tad J, Lot 1, Blk 39, 24.49,
Puckett, Tad J, Lot 7, Blk 39, 24.49,
Puckett, Tad J, Lot 1, Blk 40, 24.49,
Puckett, Tad J, Lot 7, Blk 40, 24.49,
Puckett, Tad J, Lot 1, Blk 41, 24.49,
Barley Farm Llc, 11, 04, 033, 1686.99
Barley Farm Llc, 12, 04, 033, 1099.72
Beckley, Chet & Joan, 28, 05, 033, 931.28
Beims, Mitchell S, 18, 03, 033, 947.82
Doty, Roger C & Tracy D, 35, 03, 033, 903.21
Draper, Nolan E, 13, 02, 034, 173.83
Draper, Nolan E, 14, 02, 034, 1313.88
Draper, Nolan E, 23, 02, 034, 545.14
Draper, Nolan E, 24, 02, 034, 173.47

Montague Family Trust & Zide, 12, 05, 034, 1257.9
Puckett, Tad J, 03, 03, 034, 8.96
Swanson, Constance J Etal, 34, 02, 033, 571.25
Wahrman, Clinton, 34, 02, 033, 119.89
Wahrman, Clinton, 04, 03, 033, 199.63
Wahrman, Clinton J, 02, 03, 033, 117.02
Zide, Gay Trust, 27, 02, 033, 853.74
Zide, Gay Trust, 12, 05, 034, 2464.2
Center
Gibson, N Jay & Gly Trstee, 28, 02, 033, 2.99
Harris, Wirt L Jr, 32, 05, 033, 23.89
Ludell
Original Town-Ludell
Havel, William, Lot 6, Blk 12, 58.31,
Neuhart, Francis, Lot 10, Blk 8, 8.71,
Neuhart, Francis, Lot 8, Blk 8, 4.89,
Paslay, David L & Toni R, Lot Multiple, Blk 2, 211.56,
Pearce, Cheryl, Lot 21, Blk 10, 25.11,
Pearce, Cheryl, Lot 5, Blk 10, 4.89,
Pearce, Cheryl, Lot 10, Blk 6, 96.33,
Pearce, Cheryl, Lot 15, Blk 6, 25.43,
Pearce, Claude & Cheryl, Lot 1, Blk 10, 8.71,
Pearce, Claude & Cheryl, Lot 23, Blk 10, 125.31,
Pearce, Claude & Cheryl, Lot 1, Blk 11, 8.04,
Pearce, Claude & Cheryl, Lot 15, Blk 11, 5.61,
Pearce, Claude & Cheryl, Lot 24, Blk 11, 10.02,
Pearce, Claude & Cheryl, Lot 6, Blk 11, 4.47,
Pearce, Claude & Cheryl, Lot 10, Blk 7, 72.39,
Neuhart, Richard, 30, 02, 032, 58.98
Pearce, Claude & Cheryl, 30, 02, 032, 159.22
Pearce, Claude & Cheryl, 30, 02, 032, 4.65
Wahrman, Clinton J, 31, 02, 032, 65.65
Ludell
Brown, Talia & Justin, 25, 02, 033, 13.83
Wahrman, Clinton, 35, 02, 033, 835.83
Wahrman, Clinton J, 35, 02, 033, 297.83
Wahrman, Clinton J, 36, 02, 033, 148.45
Published in the Rawlins County Square Deal on Thursday, Aug. 6, 13 and 20, 2020.

Union
Barley Farm Llc, 06, 04, 032, 1693.9
Barley Farm Llc, 07, 04, 032, 376.97
Persinger, Marvin, 08, 04, 032, 2049.8
Urban, Agnes F Trust, 03, 04, 032, 234.11
Urban, Agnes F Trust, 04, 04, 032, 364.68
Atwood
Atwood Twp
Draper, Nolan E, 05, 03, 033, 78.30
Atwood
Atwood Twp
Gibson, Gly, 29, 02, 033, 65.25
Gibson, Mj & Gly Rev Tst, 32, 02, 033, 53.28
Mirage
Kahn, Sajid Ali, 31, 05, 032, 782.91
Mirage
Casper, Bruce & Stephanie, 34, 05, 035, 206.85
Achilles
Henningsen, Anthony C, 12, 04, 031, 4365.54
Henningsen, Anthony C, 13, 04, 031, 404.53
Sis, Jarett B & Rose Marie, 14, 04, 031, 156.27
Sis, Jarett B & Rose Marie, 23, 04, 031, 138.49
Achilles
Alstrom, Steven L, 01, 04, 031, 91.19
Achilles
Feldt, Terry & Kathleen, 20, 04, 031, 676.37
Feldt, Terry & Kathleen, 29, 04, 031, 472.44
Ginther, Elmer E Jr & Carrol, 19, 04, 031, 1560.26
Ginther, Elmer E Jr & Carrol, 20, 04, 031, 148.24
Achilles
Slaybaugh, Betty, 13, 05, 031, 30.21
Jefferson
Bacon, Danny, 31, 05, 031, 114.78
Wessel, George & Lola, 20, 05, 031, 1728.71
Jefferson
Coale, Darcy, 09, 05, 031, 23.11
Coale, Darcy, 21, 05, 031, 11.56
Ryan, Mark J, 30, 05, 031, 23.11
Ryan, Mark J, 31, 05, 031, 92.46
Ryan, Mark J, 31, 05, 031, 4.62
NO OTHER BIDDERS ALLOWED IN SAID COUNTY for the amount of delinquent taxes and interest and other legal charges due thereon and unpaid to said date to the provisions of Chapter 79 article 23 of Kansas Statutes Annotated, unless otherwise prohibited by applicable Federal and State law.
Some of the names listed in this legal publication may have paid the real estate taxes or may be awaiting results of a tax protest hearing before paying second half taxes. Unfortunately, it is impossible to delete these names from publication due to statutory requirements.
Jeri L Rahe
Rawlins County Treasurer

Notice of Sale-Property on the Delinquent List of Rawlins County

Notice of Sale of Property of the Delinquent Tax List of the Rawlins County Treasurer of Rawlins County Real Estate for 2019 taxes.
Notice is hereby given that the taxes assessed for the year 2019 on the lands, lots, and blocks described in the above list, accompanied by the name of the owner situated in the County of Rawlins, State of Kansas in whole or in part, are unpaid and that said tracts of land lots and blocks will be sold on the first Tuesday of September, 2020 being the day thereof bid by me in the name of Rawlins County.

Classifieds

Services

Get a true and accurate LOCAL daily and long-range weather forecast first thing every morning by Podcast or print PDF email. Follow Decision Weather on Facebook or sign up at decisionweather.com 10

BECKMAN CARPET CLEANING: Truck-mounted steam cleaning. Carpets * Upholstery * Autos. Call 785-626-4224. 31

THE GREAT OUTDOORS offers complete automotive repair and service. 109 Grant, Atwood, 785-626-9425. 14 (tfc)

HANDYMAN FOR HIRE: If you are in need of some repairs around your house and yard, I would be willing to work for you! No job is too small. I can do minor electrical, plumbing, carpentry and yard work. I charge \$15.00/hour. I can work any day of the week. If you are interested, call Jim Reeves, 785-626-0343. 41

C.A.R. SPECIALISTS, Certified Automotive Repair. Adam Ketterl, owner. Professional automotive repair and service. ASE certified. 785-626-9288. 40

MIDI CONNECTIONS PLUMBING, HEATING & A/C: For all your sales and service needs! Licensed septic installation. Mini-excavator service. 785-626-5001.

Massage for your body's specific needs. Myofascial release, craniosacral therapy and traditional massage. Book your appointment to rejuvenate your body and spirit. Kerry Dunker, LMY 785-626-4261. Inner-rhythms.net.

McCraken peaches will be in Goodland, KS on August 14 from 8 a.m. To 1 p.m. At 1016 W Hwy 24 and in Colby on August 22 from 8 a.m. To 1 p.m. At 1996 S. Range. 970-209-4116.

Notice

ATWOOD A A MEETINGS, 8 p.m., Tuesdays at PDC meeting room. Third Tuesday - open meeting. Call Tom: 626-3625 or Nancy: 626-3807. 13

Full Moon Drum Circle, September 2, 7:30 p.m. at the Atwood Lake Gazebo. Bring your lawn chair and drum or rent a drum for \$10. Inner Rhythms, LLC.

For Sale

Beets, potatoes, onions and cabbage for sale, call Ronnie Holub 785-538-2523.

Job Opportunity

WANTED: Part-time dispatcher for Rawlins County. Please call for an application. Must be 18 and able to pass back-

ground check. 785-626- 3208. 32

OFFICE PROFESSIONAL - 4-H PROGRAM SUPPORT opportunity in RAWLINS COUNTY. Office located in ATWOOD, KS. Contact the Rawlins County Extension Office for responsibilities, qualifications and application procedure. This position provides administrative support to the local K-State Research and Extension educational program, to include the 4-H youth development program. Application deadline: Open until filled. K-State Research and Extension is an EOE of individuals with disabilities and protected veterans. Background check required. 29

God's Little Saints Preschool in Atwood is hiring for a PT Teacher's Assistant. Previous experience in early childhood is recommended but not required. Salary/wage is compensable with experience. Call Jessica at 785-443-3512 for details.

Looking for a rewarding career? We are hiring for seasonal and regular full-time employees to join our growing team in Atwood, KS, as a Wire Harness Technician. SureFire Electronics, LLC manufactures wire harnesses used in farming and machinery operations. The ideal candidate is motivated, eager and willing to learn through our in-house training program. Apply on site at 11965 Hwy 25 Atwood, KS or email tmcfee@surefire-electronics.com.

Good Samaritan Society is looking for a part-time food and nutrition assistant and part-time cook. Call 626-9015 and ask for Lynn.

The Rawlins County Public Health Department is accepting applications for a full-time RN. The qualified candidate will be in good standing with the Kansas State Board of Nursing, be a self-starter, self-motivated, working well with others and be very flex-

ible. Public Health knowledge is preferred but not required. BSN, RN preferred. Applications being accepted until position filled. For more information, application, or to send your resume, contact Karla Heble, BSN, RN Administrator, Rawlins County Public Health Department, (785) 626-3968. karlah@rawlinscounty.org. EOE

Administrative Assistant / Secretary Position: Hiss Sherman Wealth Management is looking for a part or full time friendly, detailed oriented, and organized office professional to join the team. Duties would include receptionist duties; communication and arranging client appointments; support and facilitate the completion of financial documents; and various other organizational tasks. Strong computer skills are a must. Will require a full background check. If interested please email resume to matt@hiss Sherman.com.

Public Notices

Published in the Rawlins County Square Deal Aug. 20, 27 and Sept. 3 2020.

IN THE DISTRICT COURT OF RAWLINS COUNTY, KANSAS

In the Matter of the Estate of Lester Joel Loker, Deceased.

Case No. 2020-PR-000006

NOTICE OF HEARING

THE STATE OF KANSAS TO ALL PERSONS CONCERNED:

You are notified a Petition has

been filed in this Court by Tish Loker, duly appointed, qualified and acting Administrator of the Estate of Lester Joel Loker, deceased, requesting that Petitioner's acts be approved; account be settled and allowed; the heirs be determined; the estate be assigned to the persons entitled to it pursuant to the laws of intestate succession; fees and expenses be allowed; the administration of the estate be closed; the Administrator be discharged and Petitioner be released from further liability.

You are required to file your written defenses to the Petition on or before September 14, 2020, at 9:30

A.M. in the District Court, Atwood, Rawlins County, Kansas, at which time and place the cause will be heard. Should you fail to file your written defenses, judgment and decree will be entered in due course upon the Petition.

Tish Loker, Administrator

Jerry Fairbanks #09046
FAIRBANKS KLINGLAW P.A.
1011 Main - P.O. Box 743
Goodland, KS 67735
Phone 785-890-6622
jerry@fairbanksklinglaw.net
Attorney for Administrator

For Sale

Steel Cargo/Storage Containers available In Kansas City & Solomon Ks. 20s' 40s' 45s' 48s' & 53s' Call 785 655 9430 or go online to chuckhenry.com for pricing, availability & Freight. Bridge Decks. 40'x8' 48'x8'6" 90' x 8'6" 785 655 9430 chuckhenry.com

Help Wanted

Seats Incorporated is hiring production assemblers for all shifts in Spring Hill, KS. No experience necessary. \$15.30/hr + benefits. Apply at www.seatsinc.com today.

Misc.

ARE YOU BEHIND \$10k OR MORE ON YOUR TAXES? Stop wage & bank levies, liens & audits, unfiled tax returns, payroll issues, & resolve tax debt FAST. Call 855-462-2769

DONATE YOUR CAR TO CHARITY. Receive maximum value of write off for your taxes. Running or not! All conditions accepted. Free pickup. Call for details. 844-268-9386

Lowest Prices on Health Insurance. We have the best rates

from top companies! Call Now! 855-656-6792.

ATTENTION MEDICARE RECIPIENTS! Save your money on your Medicare supplement plan. FREE QUOTES from top providers. Excellent coverage. Call for a no obligation quote to see how much you can save! 855-587-1299

BEST SATELLITE TV with 2 Year Price Guarantee! \$59.99/mo with 190 channels and 3 months free premium movie channels! Free next day installation! Call 316-223-4415

Get A-Rated Dental Insurance starting at around \$1 PER DAY! Save 25% on Enrollment Now! No Waiting Periods. 200k+ Providers Nationwide. Everyone is Accepted! Call 785-329-9747 (M-F 9-5 ET)

BATHROOM RENOVATIONS. EASY, ONE DAY updates! We

specialize in safe bathing. Grab bars, no slip flooring & seated showers. Call for a free in-home consultation: 855-382-1221

Medical Billing & Coding Training. New Students Only. Call & Press 1. 100% online courses. Financial Aid Available for those who qualify. Call 888-918-9985

Recently diagnosed with LUNG CANCER and 60+ years old? Call now! You and your family may be entitled to a SIGNIFICANT CASH AWARD. Call 866-327-2721 today. Free Consultation. No Risk.

NEW AUTHORS WANTED! Page Publishing will help you self-publish your own book. FREE author submission kit! Limited offer! Why wait? Call now: 855-939-2090

Published in the Rawlins County Square Deal on Thursday, Aug. 6, 13 and 20, 2020.

IN THE DISTRICT COURT OF RAWLINS COUNTY, KANSAS

In the Matter of the Estate of **BERNARD R. FRAKES,** Deceased

Case No. 2020-PR-000021

NOTICE OF HEARING

The State of Kansas To All Persons Concerned:

You are hereby notified that a

Petition has been filed in the above named Court by Glenn Bishop, the Personal Representative of the Estate of Bernard R. Frakes, Deceased, praying that the foreign Will of said Decedent be admitted to probate and record in said Court; that no administration of this Estate is necessary; that said Will be construed; and that the real property described in said Petition be assigned in accordance with the terms of said Will. Written objections thereto, if any, should be filed with said Court before August 28, 2020, at 10:00 A.M., C.T., of such day, in such Court, the address of which is 607 Main #F, Atwood, Rawlins County, Kansas, 67730, with a copy thereof sent to the at-

torney named below, at which time and place such cause will be heard. Should you fail therein, judgment and decree will be entered in due course upon said Petition.

/s/ Glenn Bishop
Glenn Bishop, Petitioner

D. Eugene Garner, #14267
GARNER LAW OFFICE, LLC
37553 Road 718
Culbertson, NE 69024
(308) 340-2184
degarner@mbgslaw.com
Attorney for Personal Representa-

JOB OPPORTUNITY

The Rawlins County Clerk's Office is now accepting applications for a full-time Assistant Deputy Clerk/Receptionist. Applicants should be motivated, responsible, able to multitask, flexible with change, have good communication and people skills. Experience in a business setting preferred, but not required. Benefit package available.

Please contact the Rawlins County Clerk's Office at 785-626-3351 to request an application, or submit a resume to the Rawlins County Clerk's Office at 607 Main Street Suite C, Atwood, KS 67730 phone: 785-626-3351, fax: 785-626-9019 Email: rfinley@rawlinscounty.org Applications due by September 2nd, 2020.



Decatur Health is accepting applications for the following positions:

Chief Nursing Officer. Full Time (Exempt) Graduate of an accredited school of Nursing. Current licensure as a Registered Nurse in the State of Kansas is required. ACLS and CPR certifications required. The CNO participates in developing organizational-wide patient care programs and procedures designed to assess, evaluate, and meet Nursing Care needs of all patient populations. The CNO acts as a liaison between Medical Staff and Nursing services. The CNO participates in strategic planning and preparing budget for nursing. CNO must have the ability to plan, organize and evaluate patient care services. Handle stressful situations, including frequent priority changes and workflow interruptions. Well-developed communication is required, both verbal and written. Positively manage change and conflict and apply productive problem-solving skills. Organizes, directs, and supervises day-to-day nursing activities and assure adequate hospital staff coverage and to deliver high quality care.

Night Nurse Aide/ CNA. Full Time (0.9 FTE). Certification preferred but not required. Shifts are 6pm-6am. This position participates in a weekend and holiday rotation **Nurse Aide/ CNA.** PRN. Certification preferred but not required. One year of recent experience preferred. Various shifts.

COMPETITIVE WAGES, BENEFIT PACKAGES, AND REGULAR PERFORMANCE AND SALARY EVALUATIONS. This institution is an equal opportunity employer and provider.

Apply in person or online at www.decaturhealth.org

JOB OPPORTUNITY

THE RAWLINS COUNTY ROAD AND BRIDGE DEPARTMENT is now accepting applications for a Heavy Equipment Operator. Applicant must have a valid CDL or be able to get one. Competitive pay with a great benefits package. Employees are subject to random drug and alcohol testing.

Pick up an application or submit resume to the Rawlins County Shop at 12303 Highway 25, Atwood, KS. For more information contact Mark Loop at (785) 626-3726.

USD 105, an equal opportunity employer, is accepting applications for the following:

- Substitute Teachers
- Substitute Bus Drivers
- Full-Time/Part-Time Paraprofessional
- Custodian-PT or FT
- JH Head Boys Basketball Coach
- JH Assistant Boys Basketball Coach
- HS Assistant Boys Basketball Coach

Applications can be found at www.usd105.org or you can pick one up at the District Office at 205 N. 4th Street in Atwood

Sign up today!

for the Rawlins County Square Deal e-edition

visit www.squaredealnews.com



NAH WELDING

(785) 995-9092
Mobile Welding Service
Nick Hodgs, Owner
Atwood, KS

Make a **HUGE SPLASH STATEWIDE**
Or target your ad regionally for the most cost effective media buy anywhere!

Statewide Ads appear in over 140 newspapers, reaching more than a million readers each and every week.

Display, Classified & Online networks available!

Need a more targeted campaign or looking for national coverage? Call us today to customize your plans.



Kansas Press Association

785-271-5304
316-516-3016

4021 SW 10th - #351 • Topeka, KS

Time to think about controlling volunteer wheat

It's again time to discuss controlling volunteer wheat. This is important because of the transmission of the wheat streak mosaic virus from volunteer wheat to the wheat that we will be planting in September by the wheat curl mite.


There are several options for controlling volunteer wheat at this time. As we get closer to drilling time, the options dwindle in number because we want a two week break between the presence of volunteer and the emergence of the wheat planted this fall.

Glyphosate is one of the slower methods of control because it can take a week or more before the wheat will die. This needs to be considered when timing the

application to break the green bridge for insects and diseases. The optimum time to treat with glyphosate is when most of the volunteer has emerged and is healthy and actively growing. Glyphosate can effectively control volunteer wheat that is more well established and has tillered.

Paraquat use in wheat stubble has increased as an alternative because it can help control glyphosate-resistant Palmer amaranth and kochia. Paraquat also can control small volunteer wheat if good spray coverage is achieved. However, it is less effective than glyphosate for control of volunteer wheat, especially if the volunteer wheat plants have started to tiller. It may be tempting to tank-mix

Jeanne Falk Jones
Extension District



paraquat and glyphosate together to get broader spectrum weed control. Unfortunately, the two herbicides are antagonistic when combined together, often resulting a dramatic reduction in volunteer wheat and grass control when applied as a tank-mix. Applying the glyphosate 24 hr in advance of paraquat can avoid the antagonism. Where it fits in the rotation, tank-mixing

atrazine with paraquat generally results in enhanced volunteer wheat control compared to paraquat alone.

What about using a grass herbicide, like Select (which has the active ingredient clethodim) to control the volunteer wheat? There are a couple things to consider. First, it will only be active on the volunteer wheat, not on any broadleaf weeds. Mixing

some of the grass herbicides with broadleaf herbicides can be antagonistic and result in reduced control of the grasses. Second, it is a bit slower in controlling grasses. Injury symptoms are slow to develop (seven to 10 days) and appear first on new leaves emerging from the whorl of the grass plant, but older leaves may stay green for a longer period of time. Also, if you are planning wheat after wheat, there is a 30-day rotation restriction before planting wheat.

We have discussed herbicide control, what about tillage? This usually works best when plants are small and conditions are relatively dry. Tillage has relative fast control of volunteer, especially in hot and dry conditions.

This can be a double-edged sword because while controlling the volunteer wheat, you will be disrupting the wheat stubble that will catch snow this winter.

If you have any questions on these volunteer wheat control options, please contact me at the K-State Extension Offices in Goodland, St. Francis or Sharon Springs or on the K-State Experiment Station in Colby. Follow K-State Sunflower District Agronomy on facebook to see what I am finding in the field.

Some hail damage is inevitable for gardens

If you garden in a back yard or larger open space in the country, it's inevitable that someday you are going to get some varying degrees of hail damage during your gardening career. It had been about four years since my garden saw any serious hail damage...until this last week.

My big garden in the country recently got some pretty serious hail damage...on a scale of one to ten I would say it was a six or seven. Over half of my garden at this point in the season is made up of vining type vegetable plants: Water melons, cantaloupe, winter and summer squashes, cucumbers and many types of pumpkins. All of which are the most vulnerable to any level of hail.

Surprisingly, my tomatoes and peppers were the least damaged. But not surprisingly, the part of garden with all the vining crops, looks like a bomb fell on it...a

Marty & Kay Melia
The Gardener



hail bomb. Over the years I've been asked about what you can or should do when hail hits your garden. Well, again it depends on what degree of damage you have, and, at what part of the season it happens.

One of my first bad hail damaged gardens occurred around July 1st of that summer. And everything was destroyed. I was able to replant just about everything and managed to still have a pretty good garden yield. Another time...well just four years

ago, we had probably the worst hail storm I've seen here, happening in mid-September, and again everything in the garden was destroyed. But it was late in the season, things were winding down, so it wasn't a great loss.

Back to this year's hail storm. The first thing I did after accessing the damage was to apply liquid fertilizer to all the damaged plants, and after a few days I can see some new growth starting to occur. I'm also working extra hard to keep weeds out and

watch for extra insect activity, as the vines remain very vulnerable. I feel fairly confident that many of the vining plants, especially cucumbers, pumpkins and some of the melons and winter squash's will finish out the season with some yield's. That is if there is no more hail. Even a little bit at this point would bring an end to the gardening season.

It's hard to know for certain if you are going to get hail when a big storm approach's, but when the Weather Service people suggest that an approaching storm may contain hail, it would serve you to scramble around to try

to cover your plants in the back yard garden to protect them.


And of course, it's just about time to start a "Fall" garden anyway. You can get some zucchini and summer squash planted, as well as spinach and other garden greens and lettuce. Just look for a maturity date of no more than sixty days...at this point that's about what is left of the season... that is if there is not and early frost.

Hear The Gardener Tuesdays and Fridays on KYVZFM 106.1

Tally Bridge Club

The Tally Bridge Club met on August 17, hosted by Lavina Creighton. Winners were Jeanne Searls, Effie Fields, Lavina Creighton, Jody Curtin, Diane Vap and Lois Smith. Next week's hostess will be Effie Fields.

Help your kid make the grade!



Signs of possible vision problems that can interfere with school include: squinting when reading the chalkboard, complaints of headaches after reading or watching television, placing his or her head close to a book.

PLAN AN EYE EXAM NOW!

Dr. Sam R. Funk
in Atwood every Tuesday

414 Main Street
785-626-3102
1-800-254-3937

Apply now for relief funding

This week, the state of Kansas will open up applications for a number of grants for businesses and organizations impacted by the COVID-19 pandemic.

The grants come out of the Strengthening People and Revitalizing Kansas (SPARK) Task Force, which is distributing federal aid money.

Applications are now being accepted and will be accepted until all the available funding has been spent.

Some of the grants include:
Businesses with fewer than 500 employees can apply for Small Business Working Capital Grants, which can be used for payroll, insurance, rent,

utilities and more.
The Securing Local Food Systems Grants will go to support processing facilities, food banks and retail outlets to address supply chain disruptions.

Connectivity Emergency Response Grants will go toward projects that improve internet access in underserved areas. Broadband Partnership Adoption Grants will go to help low-income households and school districts.

Higher Education Advanced Manufacturing and IT Equipment Grants will help colleges set up programs to re-skill workers affected by COVID-19.

For more information, visit www.kansascommerce.gov/covidrelief.

Rawlins County now eligible for grassland haying, grazing

Farm Service Agency has streamlined the authorization process for emergency haying and grazing use of Conservation Reserve Program acres.

To allow livestock producers quicker access to much needed

forage, authorizations will now be based on drought severity using the U.S. drought monitor.

Due to the current drought conditions in Rawlins County, which moved to a D2 on the U.S. drought monitor, we are now

eligible for emergency haying and grazing CRP.

To request emergency haying or grazing on CRP acres, contact the Rawlins County FSA office at 785-626-3149.

Let's Get Our Athletes Off on the Right Foot!

We'll help make sure your athlete is well supported, starting at the bottom!

Come see Lori, our certified shoe-fitting expert, to make sure your athlete is ready to go.



Carrier Drug, Inc

Curbside pickup & home delivery available!
"Establishing healthy relationships, one customer at a time!"

416 State St., Atwood. KS
Phone: (785) 626-3214
Mon.-Fri. 9 a.m.-6 p.m.
Sat. 9 a.m.-1 p.m.



Back To School
SALE!

Ask how you can get a
FREE LG GPad

FREE SAMSUNG GALAXY A10e SMARTPHONE INCLUDED!

NEW Student Unlimited Plan

For K-12 students under 18 years old

Smartphone & Unlimited Service for \$10/mo.

\$10 activation fee required

VIAERO WIRELESS

Find a store or buy online at viaero.com

VIAERO Student Unlimited Plan is available for K-12 students and includes unlimited nationwide data, text, and calling. Requires valid student ID and parent or legal guardian ownership of the account. No credit approval required but some information will be gathered. Free phone available with 30-month installment purchase agreement and offsetting promotional credits. Balance due at payoff or cancellation. Taxes/fees due at purchase. Viaero Assurance Service Plan discounted 50% off for the free phone on the Student Unlimited Plan only. Calling/roaming to or in Canada/Mexico or other countries not available. Maximum data speed on this plan is 3Mbps, with video streaming to phone at 480p. Requires eBill. New customers will default to Summary Bill if they have not signed up at myviaero.com before their first bill cycle. Visit a Viaero location or www.viaero.com for other terms and conditions.

2020 Rawlins County Free Fair

4-H Results

2020 Chuck Holub Award Winner



Abby Micek

Herdsman Award

Kaleigh McFee

Horse Show

High Point

Senior

Kaleigh McFee

Intermediate

Clair Withington

Junior

Reece Withington

Showmanship

Senior

Kaleigh McFee – Blue

Drew Withington – Blue

Abby Frank – Blue

Intermediate

Shy Walker – Blue

Gage Withington – Blue

Clair Withington – Red

Caleb Heskett – Red

Junior

Reece Withington – Blue

Owen Bearley – Red

Barrels

Senior

Kaleigh McFee – Purple

Drew Withington – Blue

Intermediate

Clair Withington – Purple

Gage Withington – Blue

Shy Walker – Blue

Caleb Heskett – White

Junior

Reece Withington – Purple

Owen Bearley – Blue

Trail

Senior

Kaleigh McFee – Red

Drew Withington – Red

Abby Frank – White

Intermediate

Gage Withington – Blue

Shy Walker – Blue

Clair Withington – Red

Caleb Heskett – Red

Junior

Reece Withington – Blue

Owen Bearley – Red

Horsemanship

Senior

Kaleigh McFee – Blue

Abby Frank – Blue

Drew Withington – Red

Intermediate

Clair Withington – Blue

Gage Withington – Red

Caleb Heskett – Red

Shy Walker – Red

Junior

Reece Withington – Red

Owen Bearley – Red

Bareback Pleasure

Senior

Kaleigh McFee – Red

Drew Withington – Red

Intermediate

Gage Withington – Red

Clair Withington – Red

Junior

Reece Withington – Red

Poles

Senior

Kaleigh McFee – Purple

Drew Withington – White

Intermediate

Clair Withington – Purple

Gage Withington – Blue

Caleb Heskett – Blue

Shy Walker – Red

Junior

Reece Withington – Purple

Owen Bearley – White

Western Pleasure

Senior

Drew Withington – Blue

Kaleigh McFee – Red

Abby Frank – Red

Intermediate

Caleb Heskett – Blue

Clair Withington – Red

Shy Walker – Red

Gage Withington – Red

Junior

Reece Withington – Blue

Owen Bearley – Red

Ranch Pleasure

Senior

Drew Withington – Blue

Kaleigh McFee – Red

Intermediate

Caleb Heskett – Blue

Shy Walker – Blue

Clair Withington – Red

Gage Withington – Red

Junior

Reece Withington – Red

Reining

Senior

Kaleigh McFee – Blue

Drew Withington – Red

Intermediate

Clair Withington – Blue

Shy Walker – Blue

Caleb Heskett – Red

Gage Withington – Red

Junior

Reece Withington – Blue

Flag

Senior

Drew Withington – Purple

Kaleigh McFee – Blue

Intermediate

Clair Withington – Purple

Gage Withington – Purple

Caleb Heskett – Blue

Shy Walker – Red

Junior

Reece Withington – Purple

Owen Bearley – Purple



Owen Bearley earned multiple ribbons in the junior class horse show and grand champion in goat junior showmanship with reserve in market goats. He earned a purple in the dog showmanship and red in swine showmanship.

2020 4-H Council Members

President: Sadie Sramek
 Vice President: Riley Merz
 Secretary: Kaleigh McFee
 Treasurer: Kenneth Micek
 Members: Drew Withington, Ryan Sramek, Lilly Rippe

2020 Rawlins County Fair Board

President: Lane Rietcheck
 Vice President: Lisa Wolters
 Secretary: Donnie Wolters
 Treasurer: Donna Binning
 Members: Matt Micek, Aaron Sis, Ethan Walker, Ann Domsch, Pattie Wolters

2020 Rawlins County Extension Board

Chairman: Jessica Miller
 Vice Chair: Orrin Holle
 Secretary: Linde Kastens
 Treasurer: Nikki Holliman
 Members: Heath Klein, Megan Rippe, Roger Snodgrass, Ronnie Holub, Josh McQuitty

We Salute Rawlins County 4-Hers Beardsley Beavers

Miles Klein	Gage Withington	Ryan Micek
Caleb Mews	Reese Withington	Samantha Micek
David Mews	Tyce Withington	Shy Walker
Drew Mews	Beau McQuitty	Luke Sis
Hayden Vyzourek	Brody McQuitty	Ryan Sramek
Tanner Vyzourek	Abby Micek	Sadie Sramek
Clair Withington	Anthony Micek	Landon Schoenberger
Drew Withington	Kenneth Micek	Eli Holle

Chardon

Mason McCoy	Jax Doty	Kimberly Rippe
Ella Horinek	Jay Doty	Lilly Rippe
Zoie Horinek	Dynastie Romme	Michaela Rippe
Kaleigh McFee	Karizma Romme	Ashton Bearley
Thomas McFee	Nikolas Romme	Caleb Heskett
Rileyanne Merz	Skyler Romme	Owen Bearley
Neveah Indermuhle	Samantha Cozza	Preston Bearley
Abby Frank	Allison Rippe	Arsen Erns
Wendy Frank	Connor Rippe	Jeffrey Smith

Independent

Samantha Cozza
 Dawson Holub
 Kristina Holub
 Bryson Rall



We would like to thank all of the 2020 Auction Buyers for their support of our 4-H program!
 -Rawlins County 4-H Members

2020 Rawlins County Free Fair Auction Buyers and Supporters:

Bearley Vet	JD Skiles Company
Beaver Valley Supply	Klein Ranch
Cahoj Earthmoving	Lee Vzourek Farms
Carlson Choke Tubes	Matt and Donelle Wolters
Channel Seeds – Mitch Beims	McDougal Sager & Snodgrass
Circle 7 Meats	Nutrien Ag Solutions – Bird City
Colby Ag Center	Nutrien Ag Solutions – Atwood/Oberlin
Decatur County Title and Abstract	Pinnacle Bank – McCook
Don Marshall Seed Inc	RJ Sabatka
E C Mellick	Prairie Land Electric
Farm Credit of Western Kansas	Sunflower Aero
Farmers Bank & Trust	Surefire Electronics
Farmers State Bank	Tri State Livestock
Finley Energy	Vap Construction
Gary Solko	Wade Taylor
Glacier Edge Winery	Wagner Auto Group - McCook
Heartland Vet Clinic	Woofert Construction
Hiss & Sherman Wealth Mgt.	Yost Farm Supply
Holle Gelbvieh Ranch	

4-H Results

Crafts

Ceramic Object

Connor Rippe – Purple, Blue
Ryan Sramek – Red

Craft from Recycled Material

Neveah Indermuhle – Blue
Dynastie Romme – Blue, Red, White
Nikolas Romme – 2 Blues, 3 Reds
Skylar Romme – Blue
Sadie Sramek – Blue

Legos

Connor Rippe – Blue
Luke Sis – Purple

Other Crafts

Neveah Indermuhle – Purple, Blue, Red
Beau McQuitty (Cloverbud) – Green
Brody McQuitty – Blue
Kimberly Rippe – Blue
Dynastie Romme – Red, White
Karizma Romme – 3 Blues, White
Nikolas Romme – Red
Skylar Romme – Purple, Blue
Luke Sis – Blue

Energy Management

Grand Champion – Caleb Heskett

Entomology

Beginning Collection

Miles Klein – Blue
Clair Withington – Purple
Reese Withington – Purple
Tyce Withington (Cloverbud) – Green

Beginning II Collection

Gage Withington – Purple

Fiber Arts

Patchwork or Quilted Article

Owen Bearley – Blue
Clair Withington – Purple
Reese Withington – Red

Floriculture

Annual Garden Flower

Eli Holle – Red
Maggie Holle – Blue
Will Holle – Red

Perennial Garden Flower

Eli Holle – Purple, Red
Maggie Holle – Purple, Red
Will Holle – Blue, Red
Fresh Flower Arrangement
Eli Holle – Red
Maggie Holle – Blue
Will Holle – Red

Potted Houseplant

Dynastie Romme – Purple
Karizma Romme – Blue
Nikolas Romme – Blue
Skylar Romme – Blue
Hayden Vyzourek – Blue
Tanner Vyzourek – Blue

Food Preparation

No Bake Cookies

Dynastie Romme – Red
Nikolas Romme – Red
Skylar Romme – Red
Tyce Withington (Cloverbud) – Green
Kenneth Micek – Red
Karizma Romme – Purple

3 Cookies Baked

Maggie Holle – Purple
Hayden Vyzourek – Purple
Beau McQuitty (Cloverbud) – Green
Drew Withington – Blue

3 Cupcakes, Iced

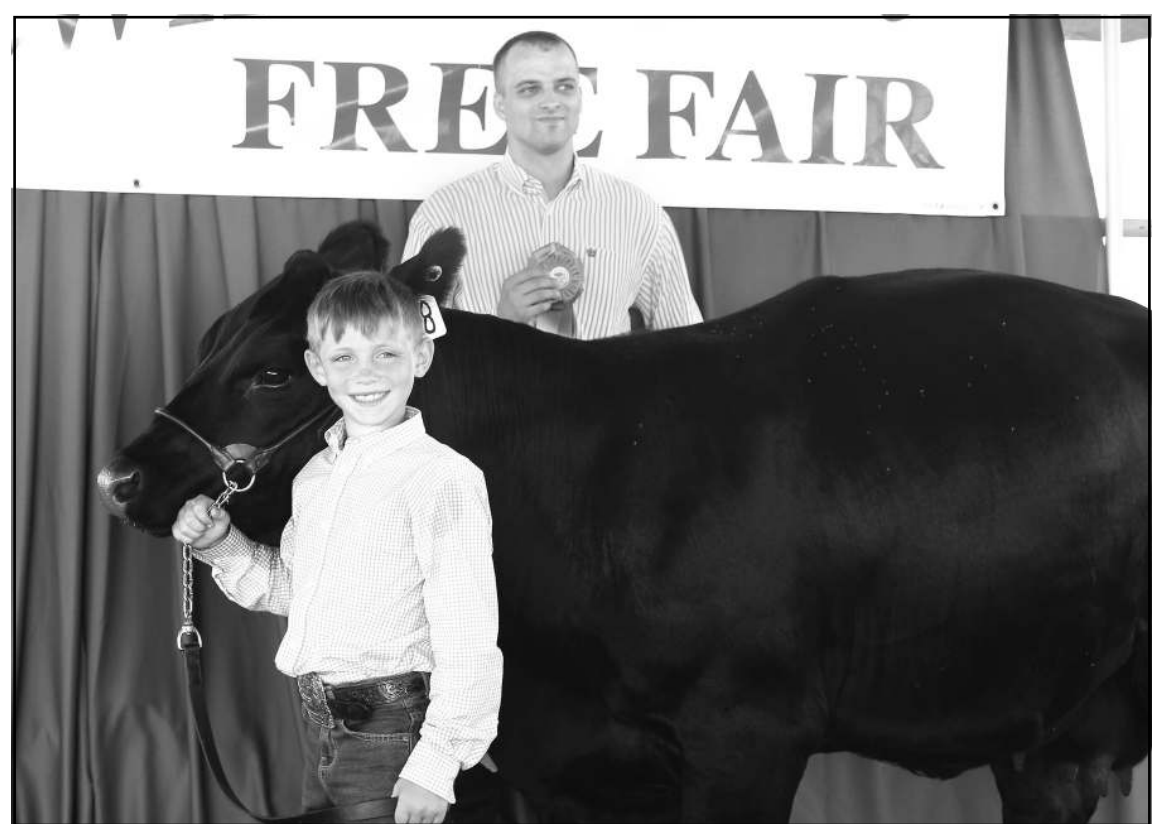
Ryan Micek – Purple

Cake, Frosted

Dynastie Romme – Purple
Nikolas Romme – Purple
Skylar Romme – Blue
Luke Sis – Purple
Ryan Sramek – Purple
Brody McQuitty – Purple
Karizma Romme – Blue



Karizma Romme (left) was awarded a blue ribbon in market swine and a red ribbon for swine showmanship. The rocket masters (above) were ready for action. Pictured are (back row, from left) Gage Withington, Samantha Micek, Abby Micek, Kenneth Micek, Tommy McFee, Luke Sis, and (front row) Anthony Micek, Ryan Micek and Tyce Withington. Will Holle (right) is all smiles as the judge awards him grand champion in junior beef showmanship. He also won a blue ribbon in market beef and a purple in swine showmanship.



Thank You
Rawlins County, for a successful Fair!

Ben-Lee Processing, Inc.
N. Hwy. 25 | Atwood, KS | Phone 785-626-3732

Congratulations 4-H'ers!

Thank you all for a job well done! We'll see you next year!

Beaver Valley Supply
The Great Outdoors Gun Shop
21366 US-36, Atwood • (800) 982-1280

Congratulations to all our wonderful 4-H members of Rawlins County!

Beardsley Equity Coop
Co Rd 407, Atwood • Office (785) 538-2386

Congratulations Rawlins County 4-H'ers!

C.A.R. SPECIALISTS
-Adam & Angela Ketterl
209 Grant St., Atwood • (785) 626-928

Congratulations Rawlins County 4-H'ers!

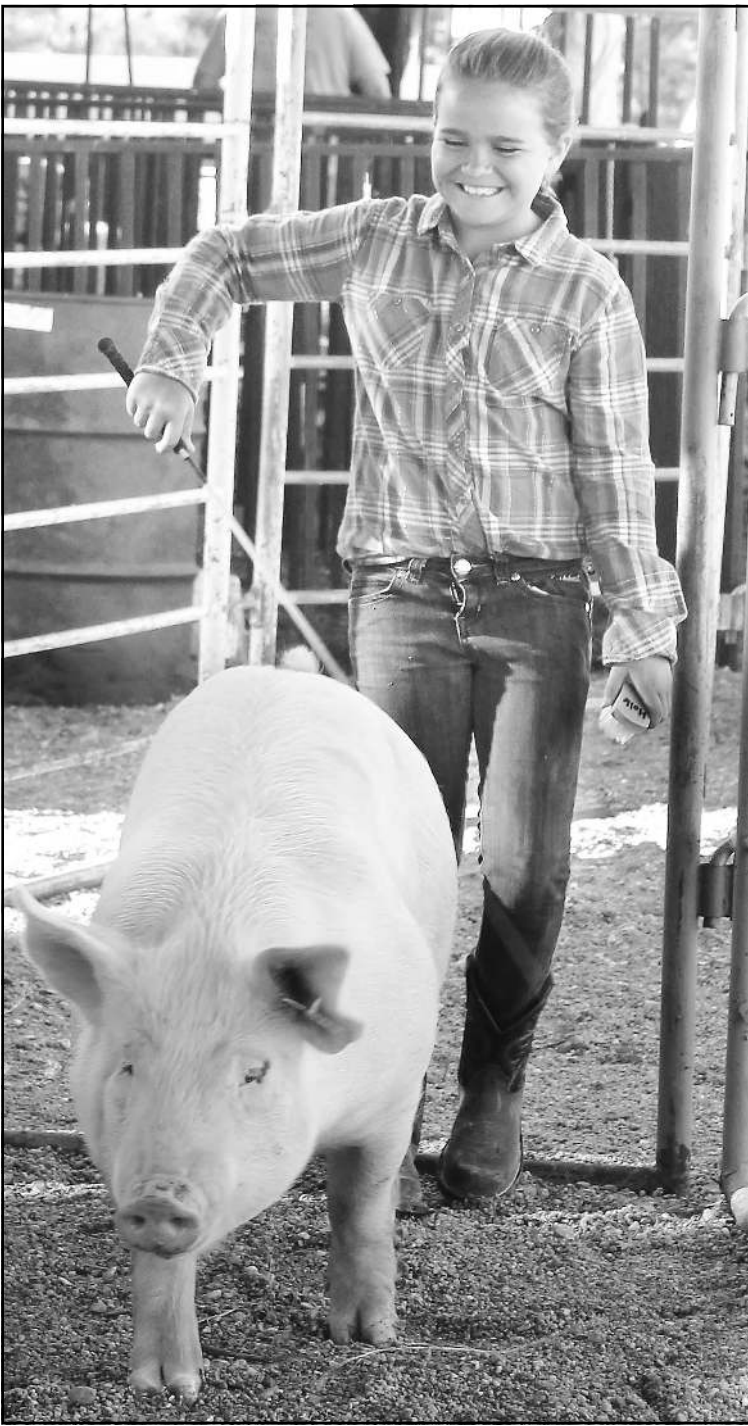
TLC General Store
Phone: (785) 626-9459

Brown's True Value.
411 Main, Atwood • Phone: (785) 626-9459

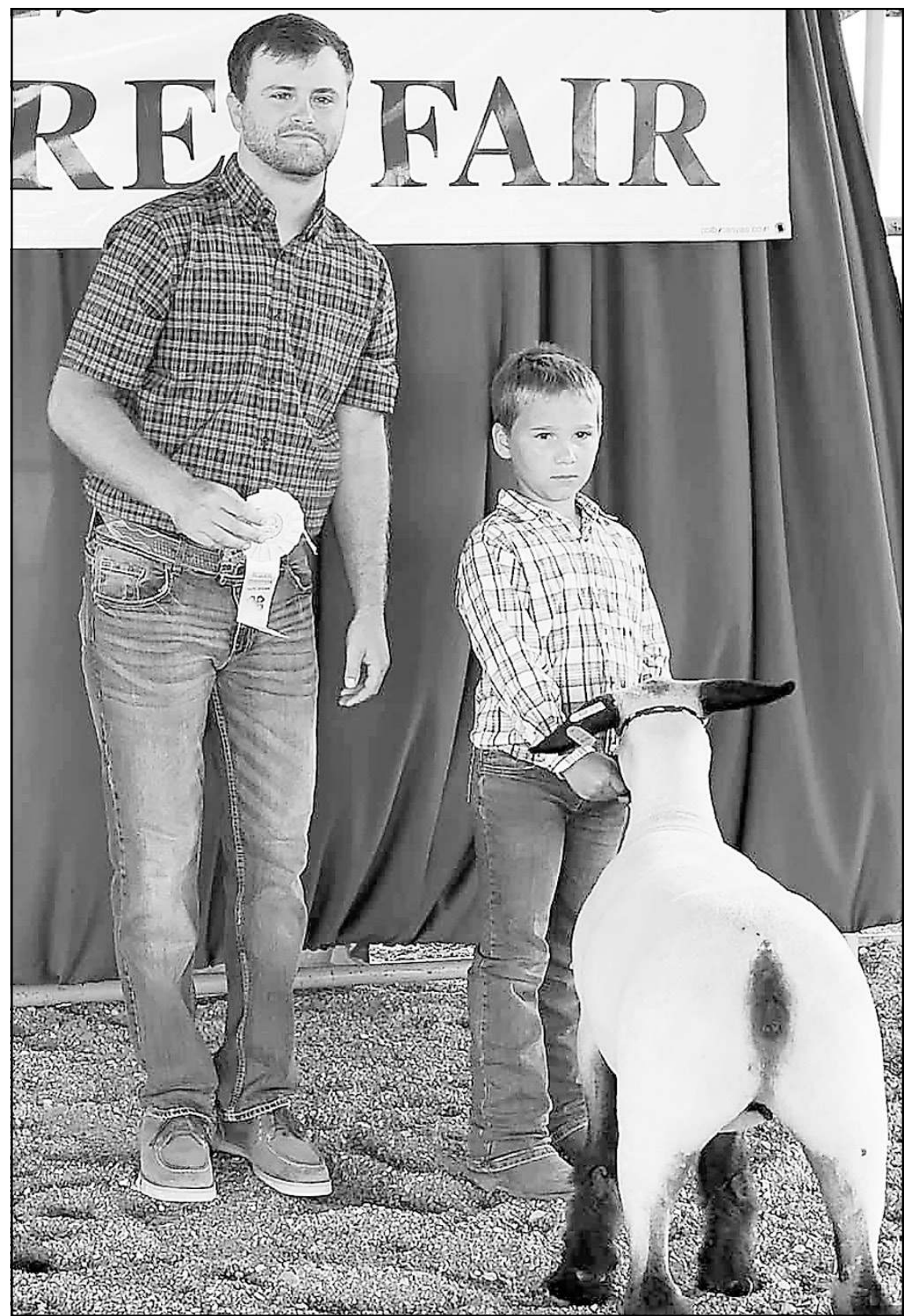
Way to Go, Rawlins County 4-H'ers!

BROWN
Creighton & Peckham
308 Main St., Atwood • (785) 626-3295

4-H Results



Kimberly Rippe (left) puts her pig through his paces to win a junior showmanship blue ribbon. She also was awarded grand champion in breeding sheep and reserve champion for sheep showmanship. Maggie Holle (above) has a tender smile for her steer as she leads him before the judges. They won blue in market beef and red in intermediate showmanship. Conner Rippe (right) is ready to accept a blue ribbon in the junior showmanship with his sheep.



3 Muffins
Ryan Sramek – Blue

3 Brownies
Gage Withington – Purple

3 Cinnamon Rolls
Abby Micek – Blue

Quick Bread Loaf
Abby Micek – Blue

3 Yeast Rolls
Lilly Rippe – Blue

Other Nonperishable Food Item
Luke Sis – Blue
Clair Withington – Red
Reese Withington – Blue

Decorated Cakes
Samantha Micek – Purple
Sadie Sramek – Purple

Perishable Pie
Ryan Sramek – Red
Sadie Sramek – Purple

Other Perishable Food Item
Hayden Vyzourek – Purple
Lilly Rippe – Blue
Sadie Sramek – Blue

Large Vegetable Plate
Eli Holle – Purple
Maggie Holle – Purple
Will Holle – Purple
Dawson Holub – Purple
Tyce Withington (Cloverbud) – Green

Fresh Culinary Herbs
Eli Holle – Blue
Maggie Holle – Purple
Will Holle – Purple

Garden Display
Eli Holle – Blue
Maggie Holle – Blue
Will Holle – Blue
Neveah Indermuhle – Red

Shooting Sports

Competition BB Targets
Eli Holle – Blue
Maggie Holle – Blue
Tanner Vyzourek – Red

Best of the Best Targets
Eli Holle – Blue
Henry Holle – Purple
Maggie Holle – Purple
Will Holle – Blue
Ryan Micek – Red
Luke Sis – Red

Conservation within Rawlins County
Maggie Holle – Purple

Robotics

Neveah Indermuhle – Blue
Thomas McFee – Purple

Rocketry

Neveah Indermuhle – Blue
Abby Micek – Blue
Ryan Micek – Blue
Samantha Micek – Purple
Luke Sis – Purple
Gage Withington – Red
Tyce Withington (Cloverbud) – Green
Thomas McFee – Blue

Horticulture

Small Vegetable Plate
Eli Holle – Blue
Maggie Holle – Purple
Will Holle – Purple
Hayden Vyzourek – Blue
Tyce Withington (Cloverbud) – 2 Greens

Medium Vegetable Plate
Eli Holle – Purple
Maggie Holle – Purple
Will Holle – Red
Dawson Holub – Purple, 2 Blues, Red
Miles Klein – Blue

Photography

Color Photos
Maggie Holle – Purple, 2 Blues, 4 Reds
Kaleigh McFee – Blue, 5 Reds
Thomas McFee – 2 Blues
Brody McQuitty – 7 Reds
Reese Withington – Blue, 2 Reds

Black and White Photos
Reese Withington – White

A Rawlins County Photo
Maggie Holle – Red, White

Congratulations 4-H'ers, on all your accomplishments!



Atwood, KS
(785) 626-6249



Proud of our local 4-H'ers!
Congrats to all!

Don Holliman Insurance Agency

514 Main, Atwood, KS • (785) 626-3082

Congratulations Rawlins County 4-H'ers!



No matter the project, we proudly support you and the hard work and dedication you put into it!

CS GAS, INC. North Highway 25 Atwood, KS

CALL TODAY TO SCHEDULE YOUR DELIVERY
785-626-6357

Fueling your farm with Bulk Fuel, Oil and Propane.

Congratulations to our local 4-H'ers!

We are proud of the hard work you put into your projects.

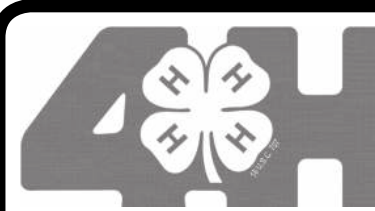


C.W. Beamgard Co., Inc.

Chrysler • Dodge • Jeep

- New & Used sales • Maintenance & Repair
- Parts & Accessories • Tires new & used
- Towing & Storage lot • Windshield Repair

210 State St., Atwood • (785) 626-3286

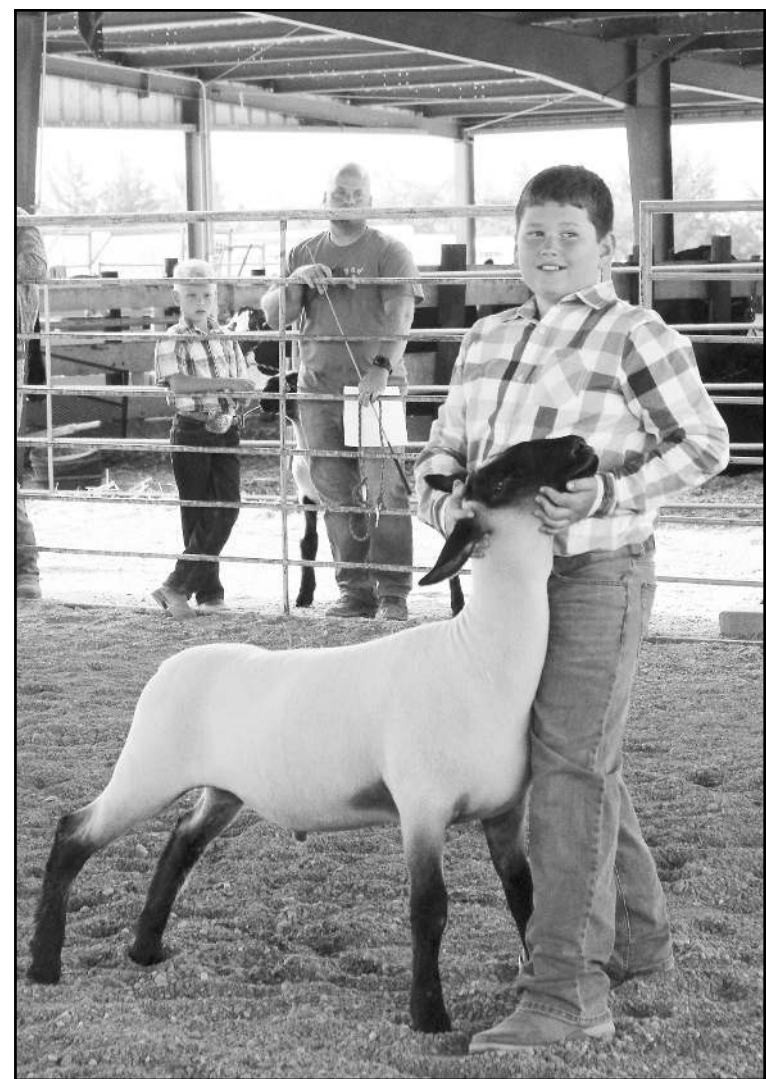


Thank you, 4-H'ers, for a job well done!



HC2 Box 17A, McDonald, KS • (785) 538-2580

4-H Results



Samantha Cozza (left) earned Grand Champion in beef showmanship; reserve champion in market beef and blue in market beef. Clair Withington (above, left) flies across the arena to win intermediate purple ribbons in barrels, poles and flags. She was high point winner in her class. She also won purple ribbons in the dog show. Gage Withington (above, right) proudly shows his sheep. They were grand champions in showmanship and market sheep. Gage also won purple ribbons in the intermediate division at the horse and dog shows.

- Nikolas Romme – Red
- Skylar Romme – Red
- Gage Withington – Red
- Junior Showmanship*
- Reese Withington – Purple
- Will Holle – Purple
- Brody McQuitty – Blue
- Ryan Micek – Blue
- Kimberly Rippe – Blue
- Owen Bearley – Red
- Connor Rippe – Red

- Abby Micek – Red
- Kaleigh McFee – Red
- Eli Holle – Red
- Ryan Micek – Red
- Thomas McFee – Red
- Skylar Romme – Red
- Caleb Heskett – Red
- Lilly Rippe – Red
- Kenneth Micek – Red
- Ryan Micek – Red

- Preston Bearley – Red
- Dawson Holub – Red
- Kristina Holub – Red
- Kenneth Micek – Red
- Michaela Rippe – Red
- Sadie Sramek – Red
- Intermediate Showmanship*
- Landon Schoenberger – Grand
- Eli Holle – Reserve
- Samantha Micek – Blue
- Allison Rippe – Blue
- Caleb Heskett – Red
- Maggie Holle – Red
- Abby Micek – Red
- Ryan Sramek – Red
- Clair Withington – Red
- Junior Showmanship*
- Will Holle – Grand
- Ryan Micek – Reserve
- Owen Bearley – Red

- Market Swine – Prospect Class**
- Mason McCoy – Blue
 - Reese Withington – Blue
 - Maggie Holle – Blue
 - Brody McQuitty – Red
 - Owen Bearley – Red
 - Gage Withington – Red
 - Gage Withington – Red
 - Owen Bearley – Red

- Breeding Swine**
- Mason McCoy – Champion
 - Purple
 - Will Holle – Reserve Purple
 - Maggie Holle – Blue
 - Kaleigh McFee – Red
 - Eli Holle – Red
 - Henry Holle – Red

Beef

- Showmanship**
- Senior Showmanship*
 - Samantha Cozza – Grand
 - Drew Withington – Reserve
 - Henry Holle – Blue
 - Kaleigh McFee – Blue
 - Ashton Bearley – Red

Skilled Arts

- Sketching, Drawing**
- Thomas McFee – Blue
 - Samantha Micek – Blue
 - Ryan Sramek – Red
 - Sadie Sramek – Purple, Blue

- Painting**
- Samantha Micek – 2 Blues
 - Allison Rippe – 2 Blues
 - Luke Sis – Blue
 - Ryan Sramek – Blue
 - Shy Walker – Purple
 - Gage Withington – Blue
 - Reese Withington – Blue

- Ceramic or Pottery**
- Samantha Micek – Blue
 - Connor Rippe – Red

Leather

- Neveah Idermuhle – Blue

Other

- Thomas McFee – Purple
- Abby Micek – Purple
- Kimberly Rippe – Blue
- Ryan Sramek – 2 Blues
- Sadie Sramek – Purple, Blue

Woodworking

- Household Furniture**
- Thomas McFee – Blue

Other Woodworking Articles

- Ashton Bearley – Blue
- Brody McQuitty – Blue
- Beau McQuitty (Cloverbud) – Green

Swine

Showmanship

- Senior Showmanship*
- Drew Withington – Purple
- Ashton Bearley – Blue
- Michaela Rippe – Blue
- Preston Bearley – Red
- Henry Holle – Red
- Kaleigh McFee – Red
- Thomas McFee – Red
- Kenneth Micek – Red
- Lilly Rippe – Red
- Karizma Romme – Red
- Intermediate Showmanship*
- Clair Withington – Purple
- Maggie Holle – Purple
- Abby Micek – Blue
- Allison Rippe – Blue
- Caleb Heskett – Red
- Eli Holle – Red
- Samantha Micek – Red
- Dynastie Romme – Red

Market Swine (Overall)

- Ashton Bearley – Champion
- Purple
- Clair Withington – Reserve
- Purple
- Allison Rippe – Blue
- Kimberly Rippe – Blue
- Connor Rippe – Blue
- Drew Withington – Blue
- Preston Bearley – Blue
- Dynastie Romme – Blue
- Michaela Rippe – Blue
- Nikolas Romme – Blue
- Kaleigh McFee – Blue
- Mason McCoy – Blue
- Dynastie Romme – Blue
- Thomas McFee – Blue
- Karizma Romme – Blue
- Samantha Micek – Blue
- Brody McQuitty – Blue
- Karizma Romme – Blue
- Skylar Romme – Blue
- Nikolas Romme – Red

What a Great Showing at the 2020 Rawlins County Fair!
We are proud of our local 4-H'ers!

10 Kansas locations to proudly serve you!
www.psbanks.com

We are proud of our local 4-H youth!
Keep up the hard work!

Open for breakfast & lunch!
Stop in today for delicious eats and tasty coffee!

MOJO espresso BISTRO

309 Main St., Atwood (785) 626-9011

Congratulations 4-H'ers!

Holle Gelbvieh

Selling 2 year old Registered Black Gelbvieh & Balancer Bulls

Orrin Holle
(785) 322-5676 or (785) 626-0081

Congrats Rawlins County 4-H'ers!

COMMITMENT TO OUR COMMUNITY

Investing in the next generation since 1914.

Put Your Trust In Us

Farmers Bank & Trust
Member FDIC

101 S. 4th St., Atwood (785) 626-3233
www.farmersbank-trust.com

Pictured is Brody McQuitty

4-H Results

Market Beef (Overall)

Drew Withington – Grand
Samantha Cozza – Reserve
Clair Withington – Blue
Will Holle – Blue
Kaleigh McFee – Blue
Samantha Cozza – Blue
Michaela Rippe – Blue
Kristina Holub – Blue
Dawson Holub – Blue
Kenneth Micek – Blue
Sadie Sramek – Blue
Will Holle – Blue
Ryan Sramek – Blue
Preston Bearley – Blue
Maggie Holle – Blue
Abby Micek – Red
Landon Schoenberger – Red
Ashton Bearley – Red
Allison Rippe – Red
Dawson Holub – Red
Kristina Holub – Red
Henry Holle – Red
Maggie Holle – Red
Kristina Holub – Red
Eli Holle – Red
Henry Holle – Red
Landon Schoenberger – Red

Bucket Calves

Miles Klein & Raptor – Blue
Beau McQuitty & Holly (Cloverbud) – Green

Breeding Beef

Will Holle – Grand
Eli Holle – Reserve
Caleb Heskett – Blue
Maggie Holle – Blue
Henry Holle – Blue
Samantha Micek – Red
Ryan Micek – Red

Breeding Beef Cow/Calf

Will Holle – Grand
Eli Holle – Reserve
Maggie Holle – Red
Samantha Micek – Red

Open Class Breeding Beef

Wyatt Rippe

Goats

Showmanship

Intermediate Showmanship
Caleb Heskett – Grand
Junior Showmanship
Owen Bearley – Grand

Market Goats

Caleb Heskett – Grand
Owen Bearley – Reserve

Sheep

Showmanship

Intermediate Showmanship
Gage Withington – Grand
Junior Showmanship
Brody McQuitty – Grand
Kimberly Rippe – Reserve
Connor Rippe – Blue
Reese Withington – Blue

Market Sheep (Overall)

Gage Withington – Grand
Brody McQuitty – Reserve
Brody McQuitty – Blue
Reese Withington – Blue

Breeding Sheep

Kimberly Rippe – Grand
Connor Rippe – Reserve
Brody McQuitty – Blue

Poultry

Large Fowl

Brody McQuitty – Purple
Gage Withington – Purple
Gage Withington – Blue

Dual Purpose Hens

Caleb Heskett – Purple & Grand Poultry

Ducks, All Breeds

Clair Withington – Purple & Reserve Poultry, Blue

Production Pullets

Brody McQuitty – Blue

Dual Purpose Pullets

Clair Withington – Blue

1 Dozen Eggs

Caleb Heskett – Purple

Cat Show

Hayden Vyzourek – Grand Champion

Dog Show

Agility 1: >20"
Kaleigh McFee – Blue
Clair Withington – Red

Agility 1: 15-20"

Drew Withington – Purple

Agility On Leash < 15"

Tanner Vyzourek – Purple

Agility On Leash >20"

Caleb Heskett – Purple
Owen Bearley – Blue
Brody McQuitty – Blue

Agility On Leash 15-20"

Gage Withington – Blue
Reese Withington – Red
Tyce Withington (Cloverbud) – Green

Showmanship

Caleb Heskett – Blue
Owen Bearley – Purple
Tanner Vyzourek – Blue
Kaleigh McFee – Blue
Brody McQuitty – Purple
Reese Withington – Blue
Gage Withington – Purple
Drew Withington – Purple
Clair Withington – Purple

Obedience

Caleb Heskett – White
Owen Bearley – White
Tanner Vyzourek – White
Kaleigh McFee – Red
Brody McQuitty – White
Reese Withington – Red
Gage Withington – Blue
Drew Withington – Purple
Clair Withington – Purple

Clothing Buymanship

Senior Division

Lilly Rippe – Grand Champion
Henry Holle – Reserve Champion
Karizma Romme – Purple, 3 Blues

Intermediate Division

Maggie Holle – Grand Champion, 3 purples
Eli Holle – Reserve Champion, 2 purples
Dynastie Romme – 4 Blues

Junior Division

Kimberly Rippe – Grand Champion, 2 Purples, Blue
Will Holle – Reserve Champion, Purple, Blue

Construction

Senior Division

Lilly Rippe – Grand Champion, Purple
Michaela Rippe – Reserve Champion

Junior Division

Kimberly Rippe – Grand Champion



Tanner Vyzourek (above) leads his Sheltie "Woody" to a blue ribbon in dog showmanship and a purple ribbon in agility on a leash. Tyce Withington (left) and his dog have great fun as they win a green Cloverbud ribbon.

WE ARE PROUD OF OUR AREA 4-H YOUTH!

Decatur County ABSTRACT

Specializing in Abstracting, Title Insurance, Escrows and Closings

Vickie L. Bailey, Abstracter
163 S. Penn Ave., Oberlin, KS 67749 • (785) 475-2381
www.decaturcountytileandabstract.com/

Congrats 4-H'ers!

MCCAIN
Trucking & Harvesting
COLBY, KANSAS
Trent & Jody • (785) 460-1318

Thank you Rawlins County for another successful Fair!

MiDe Connections Plumbing & HVAC

- Mini excavator service
- Septic Systems

Michael Pochop (785) 626-5001 Shawn (785) 626-6367

Congratulations

4-H Club Members of Rawlins County, KEEP UP THE GOOD WORK!!

Tri-State Veterinary Service and Supply

N. Hwy. 25, Atwood, KS | 785-626-3316

We Are 4-H Proud!

Congratulations to the Rawlins County 4-H'ers! Your hard work paid off!

NAPA Kirk's Auto Supply Inc.

507 N. 4th, Atwood • (785) 626-3103

Congratulations 4-H'ers!

We are so proud of the dedication your put into your craft!

Keep up the great work!

HORLACHER JEWELERS

442 N. Franklin, Colby, KS (785) 462-2241
www.horlacherjewelers.com

Congratulations to all 4-H'ers in Rawlins County!

Herndon Insurance

331 Quincy Ave, Herndon, KS 67739
(785) 322-5331



Caleb Heskett (left) finishes competition riding with a smile. He earned blue ribbons in intermediate ranch pleasure and western pleasure with reds in trail and reining. He also won a blue in dog showmanship. Dynastie Romme (above, left) was awarded a red ribbon in swine showmanship and a blue for overall market swine. Kristina Holub (above, right) prepares her beef for the judge. She won a blue ribbon in market beef and a red for senior showmanship. Kaleigh McFee (right), astride her horse, demonstrates how she became senior high point rider in the 2020 horse show. She also won a blue ribbon in market beef and another in beef showmanship.



Fair photos by Hope McFee

Thank You 4-H'ers!

We thank you for bringing The Bank your 4-H ribbons for cash! We are proud of all the hard work and dedication you all put into your 4-H projects!



Come see us for all your banking needs!

the bank

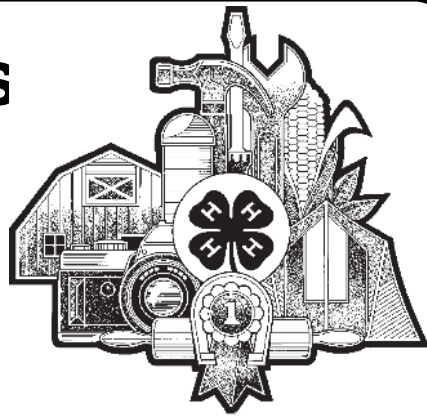


121 S. 4th St., Atwood, KS
Ph: (785) 626-3226
Monday-Friday 9 a.m.-4 p.m.
Drive-thru: 8:30 a.m.-4:30 p.m.
24 hour drive-up ATM

Branches in Cheyenne, Rawlins, Decatur, Norton, Sheridan, Thomas, Logan & Gove Counties

www.thebankks.com

Congratulations to all the county 4-H'ers for a job well done!



2020 Rawlins County Free Fair "Better Together" was indeed a success!



SureFire Ag Systems

9904 KS-25, Atwood • (785) 626-3670

Hats off to the Rawlins County 4-H'ers for all the hard work on your projects!



Pictured is Ashton Bearley and his cow



FARM CREDIT OF WESTERN KANSAS
Financing ag for generations.

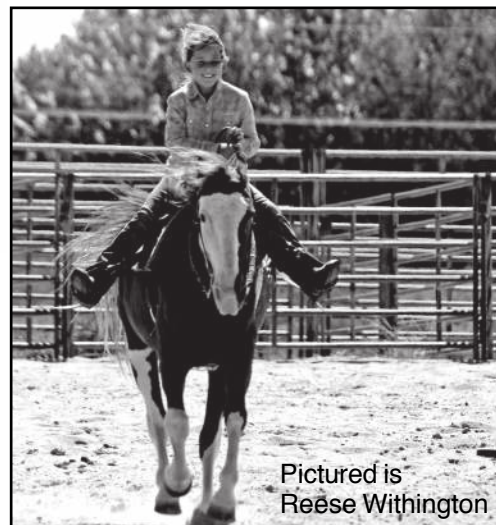
Part of the farmer-owned Farm Credit System
(785) 462-6714 • 1 (800) 657-6048
1190 S. Range, Colby, KS 67701
www.fcwk.com

To Make the Best BETTER

We admire the hard work of Rawlins County 4-H members and Fair organizers!

E.C. Mellick Agency

415 State, Atwood • (785) 626-3785



Pictured is Reese Withington

HATS OFF TO OUR 4-H'ERS



FOR A JOB WELL DONE!



DCA

DECATUR COOPERATIVE ASSOCIATION
Phone: (785) 322-5281

Herndon, Oberlin, Jennings, Kanona, Danbury, Norcatur and Lenora